

MITSUBISHI CNC

*Changes for the Better*



**Instruction Manual**  

---

**NC Compiler2**

A grayscale image of the Earth from space, showing continents and clouds. Overlaid on the image is a grid of white lines, similar to a coordinate system or a technical drawing grid. The text "MITSUBISHI CNC" is superimposed on the grid.

**MITSUBISHI  
CNC**

**MELSOFT**  
**Integrated FA Software**

IB-1501322(ENG)-C

## Introduction

This instruction manual describes how to use NC Compiler2. Incorrect handling may lead to unforeseen accidents, so make sure to read this instruction manual thoroughly before operation to ensure correct usage.

NC Compiler2 supports the following NC series. Some of the functions are not adapted to the NC Compiler2, depending on its series.

Appropriate NC
MITSUBISHI CNC M8 series

## Notes on Reading This Manual

- (1) For the specifications of individual machine tools, refer to the manuals issued by the respective machine tool builders. The "restrictions" and "available functions" described by the machine tool builders have precedence over this manual.
- (2) This manual describes as many special operations as possible, but it should be kept in mind that operations not mentioned in this manual cannot be performed.

## Precautions for Safety

Always read the specifications issued by the machine tool builder, this manual, related manuals and attached documents before installation, operation, programming, maintenance or inspection to ensure correct use. Understand this numerical controller, safety items and cautions before using the unit. This manual ranks the safety precautions into "DANGER", "WARNING" and "CAUTION".



When the user may be subject to imminent fatalities or major injuries if handling is mistaken.



When the user may be subject to fatalities or major injuries if handling is mistaken.



When the user may be subject to injuries or when property damage may occur if handling is mistaken.


The following signs indicate prohibition and compulsory.

	<p>This sign indicates prohibited behavior (must not do). For example,  indicates "Keep fire away".</p>
--	---

	<p>This sign indicates a thing that is compulsory (must do). For example,  indicates "it must be grounded".</p>
--	---

The meaning of each pictorial sign is as follows.

 CAUTION	 CAUTION rotated object	 CAUTION HOT	 Danger Electric shock risk	 Danger explosive
 Prohibited	 Disassembly is prohibited	 KEEP FIRE AWAY	 General instruction	 Earth ground

Note that even items ranked as " **CAUTION**", may lead to major results depending on the situation. In any case, important information that must always be observed is described.

 **DANGER**





Not applicable in this manual.

 **WARNING**

Not applicable in this manual.

 **CAUTION**

**1. Items related to product and manual**

-  If the descriptions relating to the "restrictions" and "allowable conditions" conflict between this manual and the machine tool builder's instruction manual, the latter has priority over the former.
-  The operations to which no reference is made in this manual should be considered impossible.
-  This manual is compiled on the assumption that your machine is provided with all optional functions. Confirm the functions available for your machine before proceeding to operation by referring to the specification issued by the machine tool builder.
-  In some NC system versions, there may be cases that different pictures appear on the screen, the machine operates in a different way on some function is not activated.

# Contents

1. Outline .....	1
1.1. Operation Environment .....	1
1.2. Applicable NC Device .....	1
2. Installation .....	2
2.1. Procedure .....	2
3. Environment Setting .....	2
3.1. Method to use batch file .....	2
3.2 Method to set environment variable .....	4
4. Execution of Build .....	5
5. Description of Makefile .....	6
6. Load Module Installation procedure to NC.....	6

Microsoft®, Visual Studio®, Windows® are either registered trademarks or trademarks of Microsoft Corporation in the United States and/or other countries.

Cygwin is a registered trademark of Red Hat, Inc.

Other company names, product names and logos are the trademarks or registered trademarks of their respective owners.

## 1. Outline

## 1. Outline

NC Compiler2 is a compiler for custom software development on MITSUBISHI CNC M8 series.

Operable operating systems for NC Compiler2 and applicable NC device for execution of the generated codes are as follow.

### 1.1. Operation Environment

NC Compiler2 requires the following operation environment.

Item	Details
Model	IBM PC/AT compatible machine(x86)
OS	Windows7 32bit Windows7 64bit Windows8.1 32bit Windows8.1 64bit Windows10 32bit Windows10 64bit  - Operable under all privilege (Administrator and Guest). However, installation must be executed by Administrator authorization.
CPU	CPU clock 1GHz or more
Language	Japanese, English
Required memory	2GB or more
Required capacity	100MB or more (Excluded those necessary for operating system operation)
External interface	CD-ROM/DVD DRIVE

### 1.2. Applicable NC Device

NC Compiler2 generates an executable module that is feasible on the following NC device.

Model
MITSUBISHI CNC M8 series

Usable in MITSUBISHI CNC M8 series custom development.

- APLC development
- Custom screen software development (except for PC unit)

Module generated with NC Compiler2 is exclusive use of MITSUBISHI CNC M8 series. Do not use on other models.

## 2. Installation

The following indicates installation procedure for NC Compiler2.

### 2.1. Procedure

Installation must be executed by Administrator authorization.

Execute NC Compiler2.exe in the installation CD. Follow the instruction after installer was started. Product ID which is required for installation is included in the package.

“Destination folder” which was designated during installation is described as <INSTALLDIR> in this manual.

## 3. Environment Setting

Environment setting is required to carry out NC Compiler2. There are 2 methods for environment setting. Select a method to suit your usage pattern.

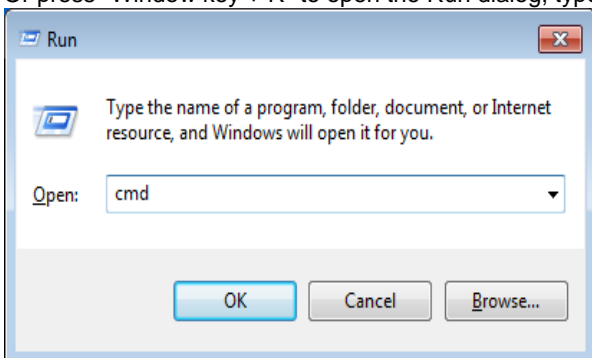
### 3.1. Method to use batch file

Execute the batch file to set environment variables which are necessary to execute NC Compiler2. When cygwin environment is used other than NC Compiler2 on the same computer, the batch file is also valid to install NC Compiler since NC Compiler is also in cygwin environment.

Start Command Prompt with the following operation.

Select Start menu   Accessories   Command Prompt.

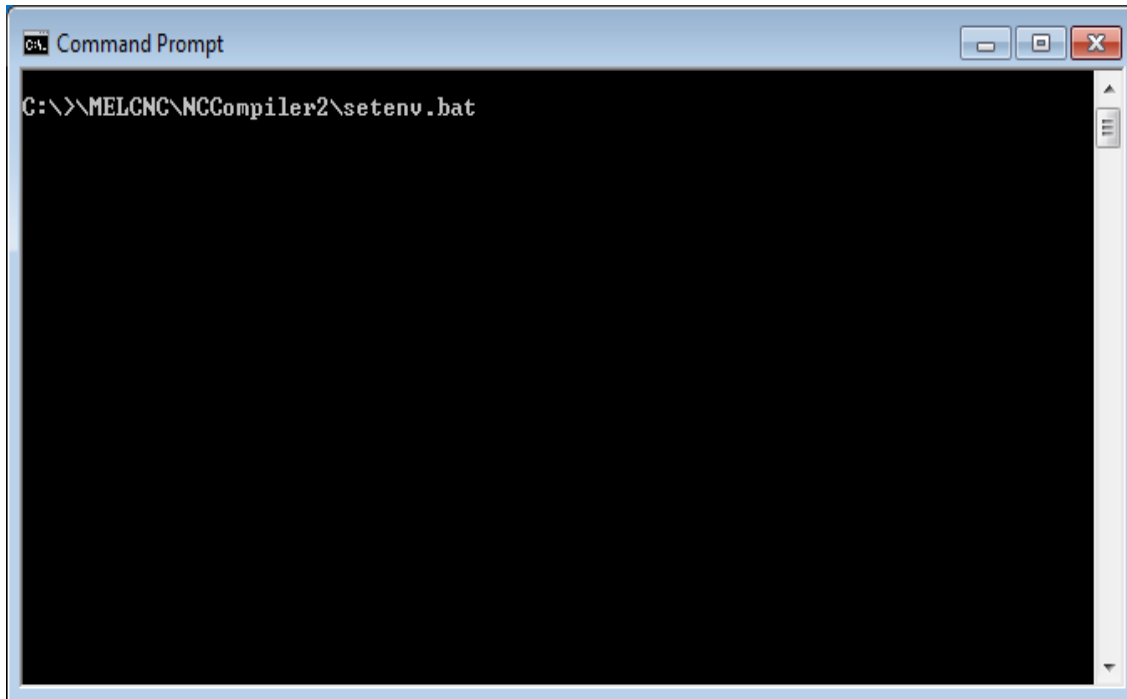
Or press "Window key + R" to open the Run dialog, type cmd, and then press OK to start Command Prompt.



### 3. Environment Setting

Environment variables are possible to set collectively to execute the batch file which is located directly under the installed folder.

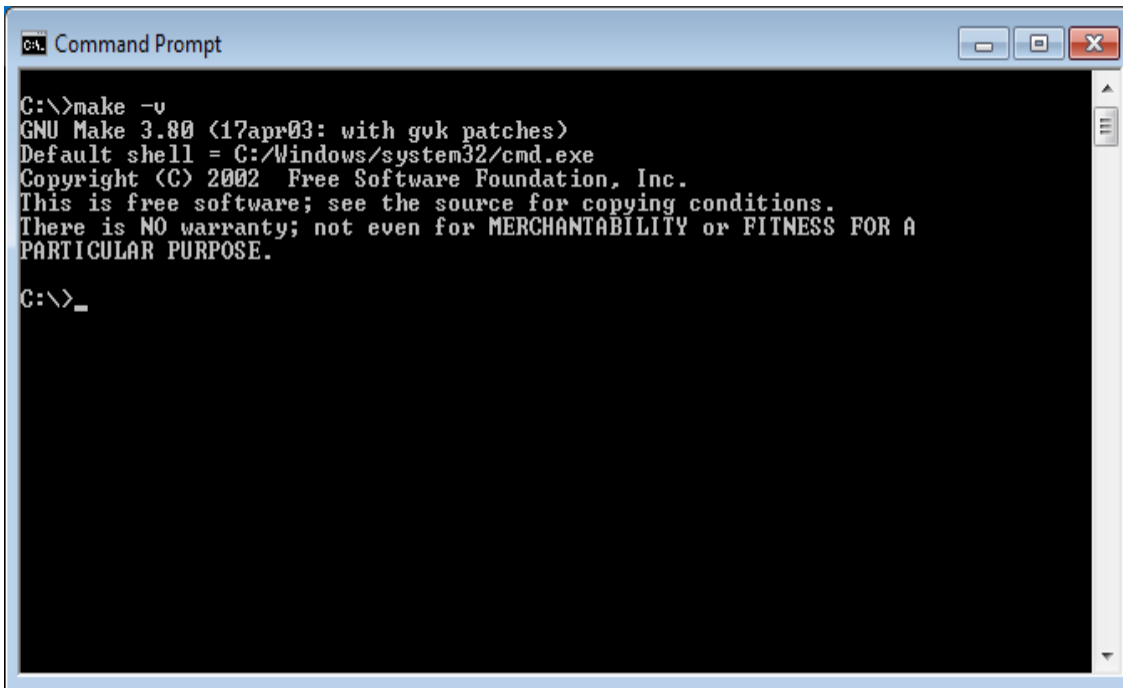
<INSTALLDIR>\setenv.bat





### 3. Environment Setting

When `make -v` is input, installed `make` tool will display the version information, so you can confirm environment variables were properly set.



```

C:\>make -v
GNU Make 3.80 (17apr03: with gvk patches)
Default shell = C:/Windows/system32/cmd.exe
Copyright (C) 2002 Free Software Foundation, Inc.
This is free software; see the source for copying conditions.
There is NO warranty; not even for MERCHANTABILITY or FITNESS FOR A
PARTICULAR PURPOSE.

C:\>_

```

Batch file must be executed every time Command Prompt is started. Execute build in the same Command Prompt after the execution of the batch file. When the same Command Prompt is used continuously, execution of batch file is required only the first time.

### 3.2 Method to set environment variable

Set environment variables which are required for NC Compiler2 execution to Windows environment. When other cygwin environment is not used, environment variables are set only first time.

Environ variables are able to set with the dialog displayed in environment variable located under Start button → Computer → System properties → Advanced system settings.

Variable name	Value
WIND_BASE	<INSTALLDIR>
WIND_HOST_TYPE	x86-win32
CPU	MIPS64
PATH	%WIND_BASE%\host%\WIND_HOST_TYPE%\bin;<PATH conventional variable value>

## 4. Execution of Build

NC Compiler2 is executable from Command Prompt.

Command name of compile is "ccmips". Object file is generated from the source files of C and C++.

Set up compile option as follow.

For APLC:

```
-EL -mips3 -O2 -mno-branch-likely -fno-strict-aliasing -G 0 -funroll-loops -fforce-addr -std=c9x -pipe
-DCPU=MIPS64 -DTOOL=gnule -DMIPSEL -DGCC960 -DVXWORKS54 -D_UNICODE -DUNICODE
-DNC_TYPE_NX -DNO_WINDOWS -D_NCDVxWorks -DRW_MULTI_THREAD -D_REENTRANT
-D_INTERPRETER_ -DGCC960 -DUNDER_VXW -DNDEBUG -DNCDSample
```

For custom screen:

```
-EL -mips3 -O2 -mno-branch-likely -fno-strict-aliasing -G 0 -fno-builtin -funroll-loops -fforce-addr -std=c9x
-pipe -fasm -fno-rtti -fno-for-scope -fno-exceptions -DCPU=MIPS64 -DTOOL=gnule -DMIPSEL
-DGCC960 -DVXWORKS54 -D_UNICODE -DUNICODE -DNC_TYPE_NX -DNO_WINDOWS
-D_NCDVxWorks -DRW_MULTI_THREAD -D_REENTRANT -D_INTERPRETER_ -DGCC960
-DUNDER_VXW -DNDEBUG -DNCDSample
```

An example of command line:

```
ccmips -EL -mips3 -O2 -mno-branch-likely -fno-strict-aliasing -G 0 -funroll-loops -fforce-addr \
  -std=c9x -pipe -DCPU=MIPS64 -DTOOL=gnule -DMIPSEL -DGCC960 \
  -DVXWORKS54 -D_UNICODE -DUNICODE -DNC_TYPE_NX \
  -DNO_WINDOWS -D_NCDVxWorks -DRW_MULTI_THREAD \
  -D_REENTRANT -D_INTERPRETER_ -DGCC960 -DUNDER_VXW \
  -DNDEBUG -DNCDSample \
  -I<Path of header file> <Source file(.c)> -o <Object file(.o)>
```

Command name of linker is "ldmips". Set up compile option as follow. Load module is generated from an object file.

```
-EL -X -r
```

An example of command line:

```
ldmips -EL -X -r -o <Load module(.o)> <Object file(.o)>
```

NC Compiler2 can convert C and C++ language. Refer to <INSTALLDIR>\docs\gnu2.96+mips\index.html (English) for compiler related information such as details of compile option. For option and other settings, use the Makefile sample (aplc\_sample), to be described later, that is included in this product package or use the Makefile included in NC Designer2. Refer to each functions' manual for the method of writing programs. EUC or UTF-8 is usable for source code of programs.

## 5. Description of Makefile

Build can be simplified by specifying build procedure to Makefile. Sample program is included <INSTALLDIR>\aplc\_sample in the package. This Makefile sample shows the basic descriptive method of Makefile with NC Compiler2. The compiler option, etc. of this Makefile is set up according to APLC development. The Makefile can be used with modifications for APLC development.

Refer to general books etc. for descriptive method of Makefile.

Execute "make" with Command Prompt after Makefile was completed to specify. Command to be executed can be confirmed with "make -n". Makefile to use can be designated with make -f file name.

## 6. Load Module Installation Procedure to NC

Refer to the following manuals for installation method of function available for each functions and load module to NC.

- APLC Open Specification Manual (BNP-C3072-204)
- NC Designer2 Instruction Manual (IB-1501250)

### \*Precaution at custom screen development

Note the following points to develop custom screen when NC Compiler2 is used.

- The filenames without the extension from the names of projects which were created on NC Designer2 and the names used for MODULE\_NAME\*\* in Config.ini have to be set identically included both capital letters and lower-case letters. Also, set filenames for load module and the designated names in customload.txt to be identical.
- Makefile for custom screen creation is included in NC Designer2 (A1 or later version). Compiler option, etc. is preset according to custom screen development, and this Makefile can be used with modifications for custom screen development.

## Revision History

Date of revision	Manual No.	Revision details
Jan. 2015	IB(NA)1501322-A	First edition created.
Jul. 2015	IB(NA)1501322-B	- Custom screen software development was added to "1.2 Applicable NC Device." - Description of custom screen was added to "4. Execution of Build." - "6. Load Module Installation Procedure to NC" was added.
Nov. 2016	IB(NA)1501322-C	- Corresponded to Windows10. - The following chapter was revised. 1.1 Operation Environment

### Notice

Every effort has been made to keep up with software and hardware revisions in the contents described in this manual. However, please understand that in some unavoidable cases simultaneous revision is not possible.

Please contact your Mitsubishi Electric dealer with any questions or comments regarding the use of this product.

### Duplication Prohibited

This manual may not be reproduced in any form, in part or in whole, without written permission from Mitsubishi Electric Corporation.

© 2015-2016 MITSUBISHI ELECTRIC CORPORATION  
ALL RIGHTS RESERVED.

# Global Service Network

## AMERICA

### MITSUBISHI ELECTRIC AUTOMATION INC. (AMERICA FA CENTER)

#### Central Region Service Center (Chicago)

500 CORPORATE WOODS PARKWAY, VERNON HILLS, ILLINOIS 60061, U.S.A.

TEL: +1-847-478-2500 / FAX: +1-847-478-2650

#### Minneapolis, MN Service Satellite

#### Detroit, MI Service Satellite

#### Grand Rapids, MI Service Satellite

#### Lima, OH Service Satellite

#### Cleveland, OH Service Satellite

#### Indianapolis, IN Service Satellite

#### St. Louis, MO Service Satellite

#### South/East Region Service Center (Georgia)

1845 SATELLITE BOULEVARD STE. 450, DULUTH, GEORGIA 30097, U.S.A.

TEL: +1-678-258-4529 / FAX: +1-678-258-4519

#### Charleston, SC Service Satellite

#### Charlotte, NC Service Satellite

#### Raleigh, NC Service Satellite

#### Dallas, TX Service Satellite

#### Houston, TX Service Satellite

#### Hartford, CT Service Satellite

#### Knoxville, TN Service Satellite

#### Nashville, TN Service Satellite

#### Baltimore, MD Service Satellite

#### Pittsburg, PA Service Satellite

#### Allentown, PA Service Satellite

#### Syracuse, NY Service Satellite

#### Tampa, FL Service Satellite

#### Lafayette, LA Service Satellite

#### Western Region Service Center (California)

5900-B KATELLA AVE. - 5900-A KATELLA AVE. CYPRESS, CALIFORNIA 90630, U.S.A.

TEL: +1-714-699-2625 / FAX: +1-847-478-2650

#### San Francisco, CA Service Satellite

#### Seattle, WA Service Satellite

#### Canada Region Service Center (Toronto)

4299 14TH AVENUE MARKHAM, ONTARIO L3R 0J2, CANADA

TEL: +1-905-754-3805 / FAX: +1-905-475-7935

#### Edmonton, AB Service Satellite

#### Montreal, QC Service Satellite

#### Mexico Region Service Center (Querétaro)

Parque Tecnológico Innovación Querétaro, Lateral Carretera Estatal 431, Km 2+200, Lote 91 Modulos 1 y 2

Hacienda la Machorra, CP 76246, El Marqués, Querétaro, México

TEL: +52-442-153 4250

#### Monterrey, NL Service Satellite

#### Mexico City, DF Service Satellite

## BRAZIL

### MELCO CNC do Brasil Comércio e Serviços Ltda.

#### Brazil Region Service Center

AV. GISELE CONSTANTINO, 1578. PARQUE BELA VISTA, VOTORANTIM-SP, BRAZIL. CEP: 18.110-650

TEL: +55-15-3023-9000

#### JOVIMAQ – Joinville, SC Service Satellite

#### MAQSERVICE – Canoas, RS Service Satellite

## EUROPE

### MITSUBISHI ELECTRIC EUROPE B.V.

#### European Service Headquarter (Dusseldorf, GERMANY)

Mitsubishi-Electric-Platz 1 40882 RATINGEN, GERMANY

TEL: +49-2102-486-1850 / FAX: +49-2102-486-5910

#### South Germany Service Center (Stuttgart)

KURZE STRASSE, 40, 70794 FILDERSTADT-BONLANDEN, GERMANY

TEL: +49-711-770598-123 / FAX: +49-711-770598-141

#### France Service Center (Paris)

25, BOULEVARD DES BOUVETS, 92741 NANTERRE CEDEX FRANCE

TEL: +33-1-41-02-83-13 / FAX: +33-1-49-01-07-25

#### France Service Satellite (Lyon)

120, ALLEE JACQUES MONOD 69800 SAINT PRIEST FRANCE

TEL: +33-1-41-02-83-13 / FAX: +33-1-49-01-07-25

#### Italy Service Center (Milan)

VIALE COLLEONI, 7 - CENTRO DIREZIONALE COLLEONI PALAZZO SIRIO INGRESSO 1,

20864 AGRATE BRIANZA (MB), ITALY

TEL: +39-039-6053-342 / FAX: +39-039-6053-206

#### Italy Service Satellite (Padova)

VIA G. SAVELLI, 24 - 35129 PADOVA, ITALY

TEL: +39-039-6053-342 / FAX: +39-039-6053-206

#### U.K. Service Center

TRAVELLERS LANE, HATFIELD, HERTFORDSHIRE, AL10 8XB, U.K.

TEL: +49-2102-486-1850 / FAX: +49-2102-486-5910

#### Spain Service Center

CTRA. DE RUBI, 76-80-APDO. 420, 08173 SAINT CUGAT DEL VALLES, BARCELONA SPAIN

TEL: +34-935-65-2236 / FAX: +34-935-89-1579

#### Poland Service Center

UL.KRAKOWSKA 50, 32-083 BALICE, POLAND

TEL: +48-12-347-6500 / FAX: +48-12-630-4701

#### Hungary Service Center

MADARASZ VIKTOR 47-49, BUDAPEST XIII, HUNGARY

TEL: +48-12-347-6500 / FAX: +48-12-630-4701

### MITSUBISHI ELECTRIC TURKEY A.Ş

#### Turkey Service Center

SERIFALI MAHALLESİ NUTUK SOKAK. NO.5 34775

UMRANIYE, ISTANBUL, TURKEY

TEL: +90-216-526-3990 / FAX: +90-216-526-3995

#### Czech Republic Service Center

AutoCont Control Systems s.r.o (Service Partner)

KAFKOVA 1853/3, 702 00 OSTRAVA 2, CZECH REPUBLIC

TEL: +420-59-5691-185 / FAX: +420-59-5691-199

#### Russia Service Center

NC-TECH (Service Partner)

213, B.NOVODMITROVSKAYA STR., 14/2, 127015 MOSCOW, RUSSIA

TEL: +7-495-748-0191 / FAX: +7-495-748-0192

#### Sweden Service Center

HAMMARBACKEN 14, P.O.BOX 750 SE-19127, SOLLENTUNA, SWEDEN

TEL: +46-8-6251000 / FAX: +46-8-966877

#### Bulgaria Service Center

#### AKHNATON Ltd. (Service Partner)

4 ANDREJ LJAPCHEV BLVD. POB 21, BG-1756 SOFIA, BULGARIA

TEL: +359-2-8176009 / FAX: +359-2-9744061

#### Ukraine Service Center (Kharkov)

#### CSC Automation Ltd. (Service Partner)

APTEKARSKIY PEREULOK 9-A, OFFICE 3, 61001 KHARKOV, UKRAINE

TEL: +380-57-732-7774 / FAX: +380-57-731-8721

#### Belarus Service Center

#### TECHNIKON Ltd. (Service Partner)

NEZAVISIMOSTI PR.177, 220125 MINSK, BELARUS

TEL: +375-17-393-1177 / FAX: +375-17-393-0081

#### South Africa Service Center

#### MOTIONTRONIX (Service Partner)

P.O. BOX 9234, EDLEEN, KEMPTON PARK GAUTENG, 1625, SOUTH AFRICA

TEL: +27-11-394-8512 / FAX: +27-11-394-8513

**ASEAN****MITSUBISHI ELECTRIC ASIA PTE. LTD. (ASEAN FA CENTER)**

**Singapore Service Center**  
307 ALEXANDRA ROAD #05-01/02 MITSUBISHI ELECTRIC BUILDING SINGAPORE 159943  
TEL: +65-6473-2308 / FAX: +65-6476-7439

**Philippines Service Center**

**Flexible (Service Partner)**  
UNIT NO.411, ALABAMG CORPORATE CENTER KM 25. WEST SERVICE ROAD  
SOUTH SUPERHIGHWAY, ALABAMG MUNTINLUPA METRO MANILA, PHILIPPINES 1771  
TEL: +63-2-807-2416 / FAX: +63-2-807-2417

**VIETNAM****MITSUBISHI ELECTRIC VIETNAM CO.,LTD**

**Vietnam Ho Chi Minh Service Center**  
UNIT 01-04, 10TH FLOOR, VINCOM CENTER 72 LE THANH TON STREET, DISTRICT 1,  
HO CHI MINH CITY, VIETNAM  
TEL: +84-8-3910 5945 / FAX: +84-8-3910 5946

**Vietnam Hanoi Service Center**

6TH FLOOR, DETECH TOWER, 8 TON THAT THUYET STREET, MY DINH 2 WARD,  
NAM TU LIEM DISTRICT, HA NOI CITY, VIETNAM  
TEL: +84-4-3937-8075 / FAX: +84-4-3937-8076

**INDONESIA****PT. MITSUBISHI ELECTRIC INDONESIA**

**Indonesia Service Center (Cikarang)**  
JL. KENARI RAYA BLOK G2-07A, DELTA SILICON 5, LIPPO CIKARANG - BEKASI 17550, INDONESIA  
TEL: +62-21-2961-7797 / FAX: +62-21-2961-7794

**MALAYSIA****MITSUBISHI ELECTRIC SALES MALAYSIA SDN. BHD.**

**Malaysia Service Center (Kuala Lumpur Service Center)**  
LOT 11, JALAN 219, P. O BOX 1036, 46800 PETALING JAYA, SELANGOR DARUL EHSAN. MALAYSIA  
TEL: +60-3-7960-2628 / FAX: +60-3-7960-2629  
**Johor Bahru Service satellite**

**THAILAND****MITSUBISHI ELECTRIC FACTORY AUTOMATION (THAILAND) CO.,LTD**

**Thailand Service Center**  
12TH FLOOR, SV.CITY BUILDING, OFFICE TOWER 1, NO. 896/19 AND 20 RAMA 3 ROAD,  
KWAENG BANGPONGPANG, KHET YANNAWA, BANGKOK 10120,THAILAND  
TEL: +66-2-682-6522 / FAX: +66-2-682-6020

**INDIA****MITSUBISHI ELECTRIC INDIA PVT., LTD.**

**CNC Technical Center (Bangalore)**  
PLOT NO. 56, 4TH MAIN ROAD, PEENYA PHASE 3,  
PEENYA INDUSTRIAL AREA, BANGALORE 560058, KARNATAKA, INDIA  
TEL : +91-80-4655-2121 FAX : +91-80-4655-2147  
**Chennai Service Satellite**  
**Coimbatore Service Satellite**  
**Hyderabad Service Satellite**

**North India Service Center (Gurgaon)**

2ND FLOOR, TOWER A&B, DLF CYBER GREENS, DLF CYBER CITY,  
DLF PHASE-III, GURGAON- 122 002, HARYANA, INDIA  
TEL : +91-124-4630 300 FAX : +91-124-4630 399  
**Ludhiana Satellite**  
**Panth Nagar Service Satellite**  
**Delhi Service Satellite**  
**Jamshedpur Service Satellite**

**West India Service Center (Pune)**

EMERALD HOUSE, EL-3, J BLOCK, M.I.D.C., BHOSARI, PUNE - 411026, MAHARASHTRA, INDIA  
TEL : +91-20-2710 2000 FAX : +91-20-2710 2100  
**Kolhapur Service Satellite**  
**Aurangabad Service Satellite**  
**Mumbai Service Satellite**

**West India Service Center (Ahmedabad)**

UNIT NO: B/4, 3RD FLOOR, SAFAL PROFITAIRE, PRAHALADNAGAR CORPORATE ROAD,  
PRAHALADNAGAR SATELLITE, AHMEDABAD – 380015, GUJRAT, INDIA  
TEL : +91-265-2314699  
**Rajkot Service Satellite**

**CHINA****MITSUBISHI ELECTRIC AUTOMATION (CHINA) LTD. (CHINA FA CENTER)**

**China Shanghai Service Center**  
1-3,5-10,18-23/F, NO.1386 HONG QIAO ROAD, CHANG NING QU,  
SHANGHAI 200336, CHINA  
TEL: +86-21-2322-3030 / FAX: +86-21-2322-3000\*8422

**China Ningbo Service Partner**  
**China Wuxi Service Partner**  
**China Jinan Service Partner**  
**China Hangzhou Service Partner**

**China Beijing Service Center**

9/F, OFFICE TOWER 1, HENDERSON CENTER, 18 JIANGUOMENNEI DAJIE,  
DONGCHENG DISTRICT, BEIJING 100005, CHINA  
TEL: +86-10-6518-8830 / FAX: +86-10-6518-8030  
**China Beijing Service Partner**

**China Tianjin Service Center**

UNIT 2003, TIANJIN CITY TOWER, NO 35 YOUYI ROAD, HEXI DISTRICT,  
TIANJIN 300061, CHINA  
TEL: +86-22-2813-1015 / FAX: +86-22-2813-1017

**China Chengdu Service Center**

1501-1503,15F, GUANG-HUA CENTRE BUILDING-C,NO.98 NORTH GUANG HUA 3th RD,  
CHENGDU,610000,CHINA  
TEL: +86-28-8446-8030 / FAX: +86-28-8446-8630

**China Shenzhen Service Center**

ROOM 2512-2516, 25/F., GREAT CHINA INTERNATIONAL EXCHANGE SQUARE, JINTIAN RD.S.,  
FUTIAN DISTRICT, SHENZHEN 518034, CHINA  
TEL: +86-755-2399-8272 / FAX: +86-755-8229-3686

**China Xiamen Service Partner**  
**China DongGuang Service Partner**

**China Dalian Service Center**

DONGBEI 3-5, DALIAN ECONOMIC & TECHNICAL DEVELOPMENTZONE, LIAONING PROVINCE,  
116600, CHINA  
TEL: +86-411-8765-5951 / FAX: +86-411-8765-5952

**KOREA****MITSUBISHI ELECTRIC AUTOMATION KOREA CO., LTD. (KOREA FA CENTER)**

**Korea Service Center**  
8F GANGSEO HANGANG XI-TOWER A, 401 YANGCHEON-RO, GANGSEO-GU,  
SEOUL 07528 KOREA  
TEL: +82-2-3660-9609 / FAX: +82-2-3664-8668  
**Korea Daegu Service Satellite**

**TAIWAN****MITSUBISHI ELECTRIC TAIWAN CO., LTD. (TAIWAN FA CENTER)**

**Taiwan Taichung Service Center**  
NO.8-1, INDUSTRIAL 16TH RD., TAICHUNG INDUSTRIAL PARK, SITUN DIST.,  
TAICHUNG CITY 40768, TAIWAN  
TEL: +886-4-2359-0688 / FAX: +886-4-2359-0689

**Taiwan Taipei Service Center**

10F, NO.88, SEC.6, CHUNG-SHAN N. RD., SHI LIN DIST., TAIPEI CITY 11155, TAIWAN  
TEL: +886-2-2833-5430 / FAX: +886-2-2833-5433

**Taiwan Tainan Service Center**

11F-1., NO.30, ZHONGZHENG S. ROAD, YONGKANG DISTRICT, TAINAN CITY 71067, TAIWAN  
TEL: +886-6-252-5030 / FAX: +886-6-252-5031

**OCEANIA****MITSUBISHI ELECTRIC AUSTRALIA PTY. LTD.**

**Oceania Service Center**  
348 VICTORIA ROAD, RYDALMERE, N.S.W. 2116 AUSTRALIA  
TEL: +61-2-9684-7269/ FAX: +61-2-9684-7245

MITSUBISHI CNC

**MITSUBISHI ELECTRIC CORPORATION**

HEAD OFFICE : TOKYO BLDG.,2-7-3 MARUNOUCHI,CHIYODA-KU,TOKYO 100-8310,JAPAN

---

MODEL	NC Compiler2
MODEL CODE	100-410
Manual No.	IB-1501322