



Daily Monthly ReportSoftware
EcoMeasureIII
MODEL

MES3-SW1-DR-FR **(English Version)**

User's Manual (Installation version)

- Before operating the instrument, you should first read thoroughly this operation manual for safe operation and optimized performance of the product. Deliver this user's manual to the end user.

- Table of Contents -

CHAPTER 1 INTRODUCTION	1
1.1 Features	2
1.2 Configuration and overview of functions	3
1.2.1 System configuration.....	3
1.2.2 Overview of functions.....	4
1.3 Package contents	5
1.4 Specifications	7
1.5 Storage	8
1.6 After-sales service	8
1.7 Disposal	8
CHAPTER 2 PREPARATIONS FOR USE	9
2.1 Operating environment	9
2.2 Installing the software	10
2.2.1 Preparing for the installation.....	10
2.2.2 Installing the device driver for the hardware key.....	11
2.2.3 Installing EcoMeasure III.....	14
2.3 Uninstalling the software	17
2.3.1 Uninstalling EcoMeasure III.....	17
2.3.2 Uninstalling the device driver for the hardware key.....	19

CHAPTER 1 INTRODUCTION

Thank you very much for purchasing this Daily Monthly Report Software (EcoMeasure III).

This user manual explains the setting procedure and usage which are necessary to operate the Daily Monthly Report Software (hereinafter abbreviated as “this software”) for EcoWebServer III (hereinafter abbreviated as “subsystems”).

This user manual explains the operation with the assumption that the user of this software is familiar with the basic operations of Windows.

Please refer to the manual or other documents of the used operating system if in doubt about the basic operations of Windows.

1.1 Features

This software is the exclusive software for creating the report easily from the logging file (in CSV file format) that is collected and stored by the subsystem.

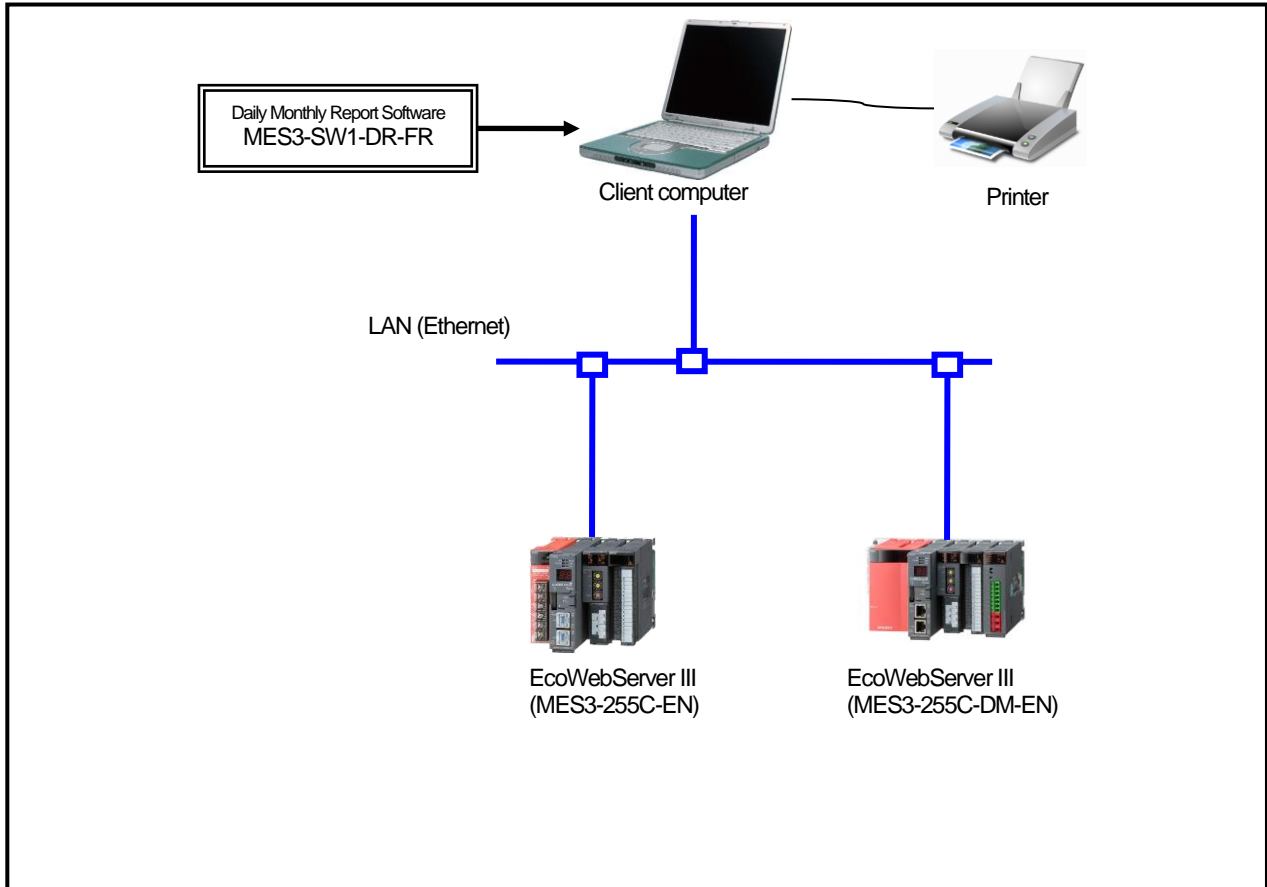
This software has the following features.

- (1) Simple operation
By adopting the standard Windows interface, the software can be operated simply using a mouse.
- (2) Simple setting
Only the simple system settings are necessary to calculate the specific consumption, and create the report.
- (3) Manual entry of the data
Using the virtual measuring point for entry, you can manually enter the daily (on an hourly basis) or monthly (on a daily basis) production quantity.
It is also possible to create the report.
- (4) Creation of daily, monthly, and annual reports
It is possible to create the daily report, monthly report, and annual report based on the various measured data.

1.2 Configuration and overview of functions

1.2.1 System configuration

The following shows an example of the system configuration of this software.



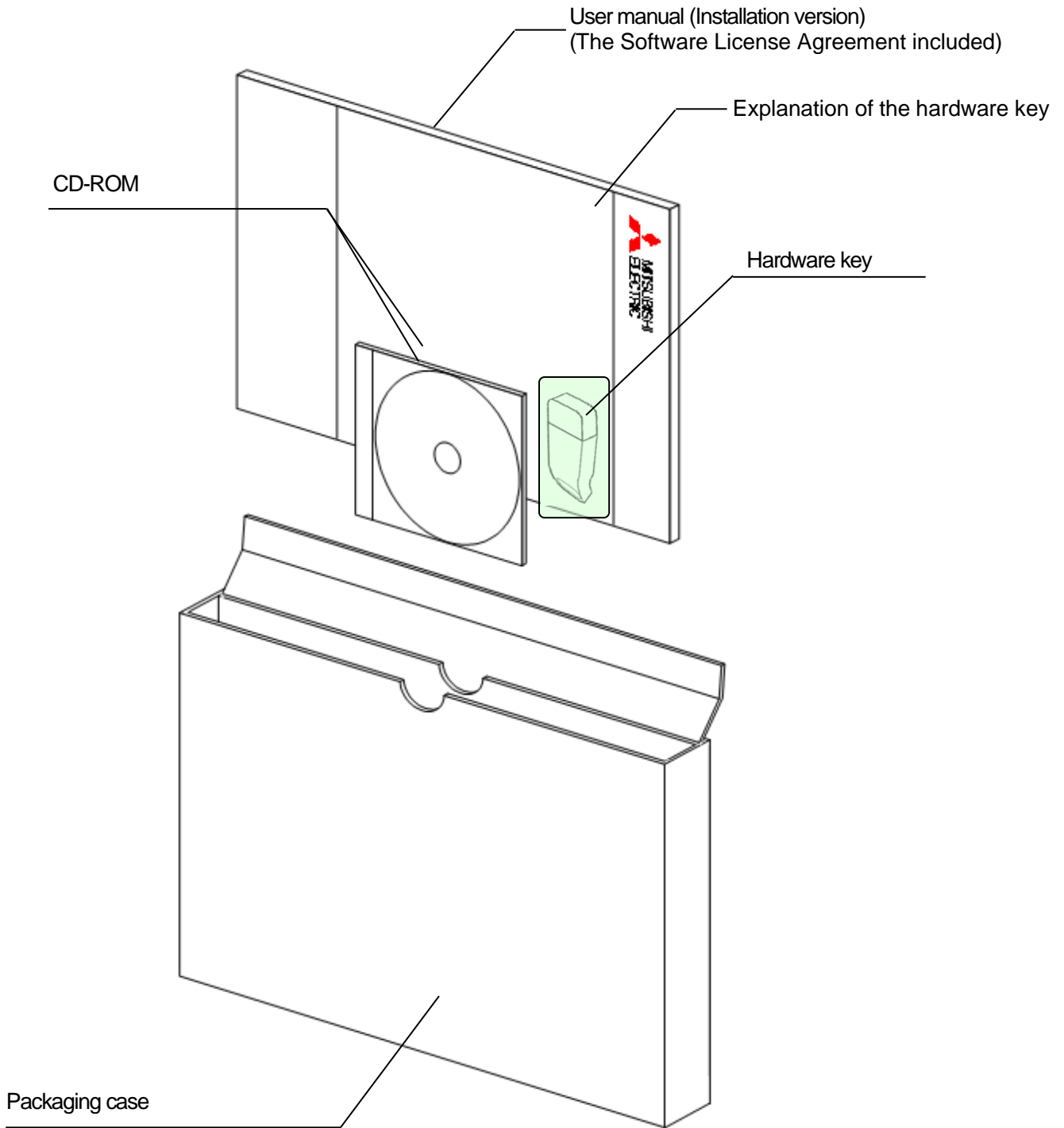
- * Devices other than this software are sold separately and should be prepared by the customer.
- * Refer to the user manual supplied with the subsystem for the usage of each subsystem or the connection method of the subsystem to the computer.
- * It is possible to use up to 8 subsystems with a computer connected on the same LAN.
- * MES3-255C-DM-EN is counted as 2 subsystems.


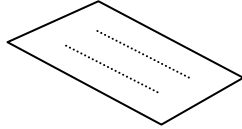
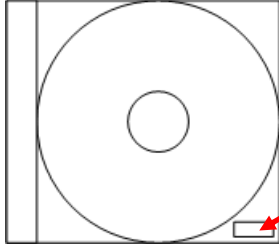
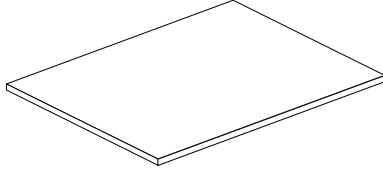
1.2.2 Overview of functions

Function	Details	Notes
Setup function	<ul style="list-style-type: none"> ● Subsystem setting This item sets the project name, IP address, and measuring point information of the subsystem. ● Virtual measuring point setting This item sets the virtual measuring point (virtual measuring point group) information used in the report and the specific consumption setting. There are two types of the virtual measuring point: calculation and entry. ● Specific consumption setting This item sets the specific consumption information used in the report. ● Report setting This item sets the measuring point to be output in the report. ● System setting This item sets the usage environment of this software. 	See Chapter 4
Collection function	<ul style="list-style-type: none"> ● Data collection Logging file is collected from the subsystem via the LAN. The collected logging file is stored in the logging file storage location path specified for each subsystem. 	See Chapter 5
Entry function	<ul style="list-style-type: none"> ● Data entry This item inputs the daily or monthly data of the registered virtual measuring point. 	See Chapter 6
Creation function	<ul style="list-style-type: none"> ● Creation of the report This item creates the daily, monthly, and annual reports. 	See Chapter 7

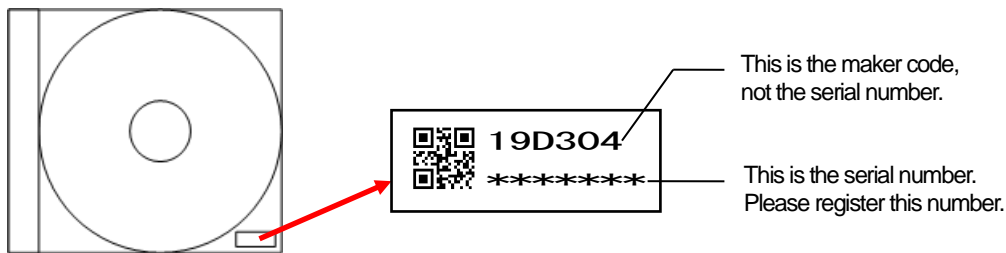
1.3 Package contents

This software is packed as shown below.
After unpacking the software, check the contents.



Name	Quantity	Appearance	Notes
Hardware key	1		Necessary when using the software.
Explanation of the hardware key	1		The manual explaining the handling of the hardware key.
CD-ROM	1		The installation program of the Daily Monthly Report Software, the device driver of the hardware key, and the user manual are stored. The sticker showing the serial number is attached on the CD case.*
User manual (Installation version) English	1		The user manual explaining the installation procedure of this software. Refer to the User manual (Detailed version) contained in the CD-ROM for details of the procedures of operation and setting.
User manual (Installation version) Simplified Chinese	1		

* The serial number is necessary when performing the user registration on the Internet. Please check the sticker on the CD case.



Cautions

- This software can be installed only on one computer.
- Unpack the software and check that all the contents described above are supplied. If there are any problems such as missing items, erratic pagination, and missing pages, please contact your nearest branch office or sales office.

1.4 Specifications

Item		Details		
Setup function	Subsystem setting		Registration of the subsystem to be used (up to 8)	
	Virtual measuring point setting		Registration of the virtual measuring point (virtual measuring point group) to be used in the report and specific consumption setting	
		Number of registration points	Up to 100 points Virtual measuring point : Up to 95 points (Total number of points of all manual entry and calculation of measuring point) Virtual measuring point group : Up to 5 groups	
		Virtual measuring point	Four arithmetic operations of up to 64 measuring points are set as the virtual measuring point.	
		Virtual measuring point group	Adds-subtracts of up to 32 virtual measuring points is set as the virtual measuring point group. (Virtual measuring point for calculation only)	
	Specific consumption setting		Registration of the specific consumption to be used in the report	
		Number of registration points	Up to 100 points	
		Energy amount Production amount	Selected from the measuring point and virtual measuring point (virtual measuring point group)	
	Report setting		Setting of the report format	
		Number of output items	Daily report Up to 2250 items 15 items/sheet x 150 sheets	
			Monthly report Up to 2250 items 15 items/sheet x 150 sheets	
			Annual report Up to 2250 items 15 items/sheet x 150 sheets	
		Output item	Selected from the measuring point, virtual measuring point (virtual measuring point group), and specific consumption	
	System setting		Setting the storage destination path for the daily report file Setting the storage destination path for the monthly report file Setting the storage destination path for the annual report file	
	Data collection setting	Collection at start-up		Setting for whether or not to perform the data collection when the software is started up Also, setting of whether or not to perform the collection for each file type
		Passive mode		Setting for whether or not to use the passive mode when the EcoServer is connected
		Storage period		Setting of the storage period for each file type
			Daily	1 to 36 months (Default: 24 months)
		Monthly	1 to 5 years (Default: 3 years)	
	Processing schedule setting		Setting for the date and time of processing (closing date and time) of the report	
Data collection function	File collection		Collection of the logging file stored in the subsystem via the LAN	
		Collection timing	Time for the collection specified by the user At the software start-up At editing of the report (excluding the annual report)	
	File storage		Storage to the path specified for each subsystem	
		Daily	Data of up to 36 months (Variable from 1 to 36 months)	
	Monthly	Data of up to 5 years (Variable from 1 to 5 years)		
Timing of file deletion		Logging files are deleted in order when they exceed the number of storage days.		
Data entry function	Daily data entry		Enters the hourly data of one day for the virtual measuring point for manual entry. (You can enter the data of up to 1 month ahead.)	
	Monthly data entry		Enters the daily data of one month for the virtual measuring point for manual entry. (You can enter the data of up to 1 year ahead.)	
	Batch entry of monthly data		Batch entry of the daily data for the specified date for the virtual measuring point for manual entry (You can enter the data of up to 1 year ahead.)	
Report creation function	Daily report		Creates a daily report of the specified date and saves it in Excel format.	
	Monthly report		Creates a monthly report of the specified month and saves it in Excel format.	
	Annual report		Creates an annual report of the specified year and saves it in Excel format.	
Maintenance function	Back-up		Makes backup of the setting value and data to a folder.	
	Restore		Restores the setting value and data backed up in the specified folder.	

1.5 Storage

Avoid storage of the hardware key and CD-ROM in the places as described below.

- Places where the ambient temperature exceeds the range of 5° to 45°C
- Places where the daily average temperature exceeds 35°C
- Places where the ambient humidity exceeds the range of 10 to 90% RH, or places where condensation exists
- Places exposed directly to rain, water droplets, or sunlight, or places close to heating appliances
- Places subject to frequent vibration or impacts
- Places where a large amount of dust, corrosive gases, salinity, or soot exists
- Places where pieces of metal or similar substances are scattered
- Places where there is a strong magnetic field or a high exogenous noise

1.6 After-sales service

If a defect in quality is found within one year from the purchase of the product, or within 18 months of its manufacture, whichever is earlier, and the responsibility for the cause of such defect lies with Mitsubishi Electric Corporation, we will provide a replacement with no charge.

However, a charge will be made for the replacement in the cases as listed below even within one year after the purchase.

- When the defect arises from an incorrect operation
- When the defect arises from a misuse

In addition, a charge will be made for the service maintained for the product purchased before more than one year.

1.7 Disposal

Dispose of the product in compliance with the laws and regulations determined by the local government.

CHAPTER 2 PREPARATIONS FOR USE

To operate this software, **Microsoft Excel is separately required** on the computer to which the software is installed.

For the usable versions of Microsoft Excel, see the operating environment listed below.

2.1 Operating environment

The system environment necessary for this software to operate correctly is as shown below.

Item	Details
OS (basic software)	English version of Microsoft Windows 8.1 Pro (32 bits/64 bits) English version of Microsoft Windows 10 Pro (32 bits/64 bits)
Required software*1	English version of Microsoft Excel 2013 SP1(32bits,64bits) / 2016(32bits,64bits) / 2019(32bits,64bits)
CPU	For Windows 8.1 or Windows 10: As recommended for the operating system
Memory*2	As recommended for the operating system
Hard disk*2	Software: Approx. 100 MB or more, Data: 8 GB or more*3
CD-ROM drive	1 drive (for installing the software)
LAN	10/100/1000BASE-T x1
USB connector (Type A)	1 connector (for connecting the hardware key)
Display resolution	800x600 pixels or more
Display color	256 colors or more

*1 Excel purchased and downloaded at Microsoft Store can not be used. Please use packaged version.

*2 Note that the required memory and available hard disk space may vary depending on the system environment.

*3 Shows the capacity required when the product is used with 8 subsystems connected at the maximum.

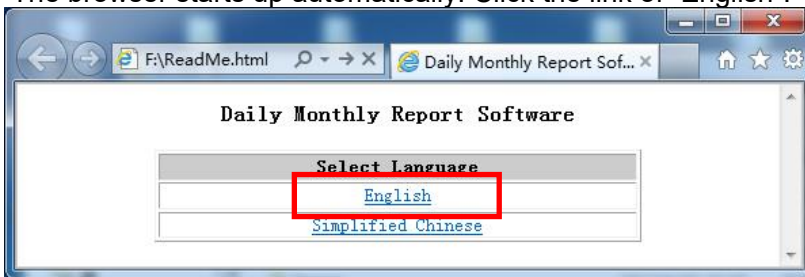
2.2 Installing the software

You can install this software easily using the special installer. When setting up this software for the first time, make sure to read this chapter before executing the set-up.

- * To install the software, it is necessary to log in the computer as a user having an administrator authority.
- * This software can be installed on one client computer.
- * The hardware key is not used during installation. It is used at the startup (during startup).


2.2.1 Preparing for the installation

- (1) Insert the CD-ROM storing this software into the CD drive of the computer.
- (2) The browser starts up automatically. Click the link of "English".



*If the software does not start up automatically, open the CD drive using the Explorer and execute "ReadMe.html."



- (3) The installation screen shown below will be displayed.



Daily Monthly Report Software
EcoMeasureIII Model name: MES3-SW1-DR-FR(English Version)

Software Installation and Instruction Manual CD

- Please read the instruction manual carefully, and use the product properly.
- After reading the manual, keep it at hand for future reference.
- Be sure to deliver this instruction manual to the end user.

	Item	Contents
Installation	Step 1  Install Hardware Key Driver	Install EcoMeasureIII hardware key driver.
	Step 2  Install Daily Monthly Report Software	Install EcoMeasureIII Daily Monthly Report Software.
Instruction Manual	Instruction Manual(Detailed version)	This instruction describes how to install, set up the subsystem settings and report settings, show graph and etc. Detailed instructions for EcoMeasureIII operating.
	Instruction Manual(Installation version)	Installation and wiring are explained in this instruction. This instruction is also attached in the packing case.

The indication of Instruction Manual requires **Adobe Reader**[®].
If there is not applicable software, please obtain it from the site of Adobe Systems Incorporated.
[Download Adobe Reader](#)

About a trademark

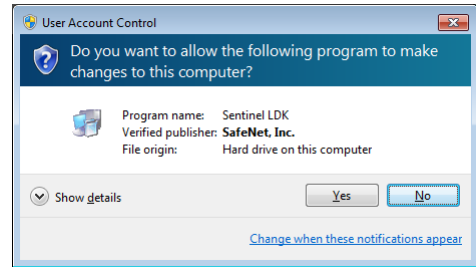
- EcoMeasure, EcoServer and the logo are trademarks of MITSUBISHI ELECTRIC CORPORATION.
- Adobe, Adobe Reader and the logo are trademarks of Adobe Systems Incorporated.
- Microsoft, Windows, Internet Explorer and the logo are trademarks of Microsoft Corporation.

MITSUBISHI ELECTRIC CORPORATION

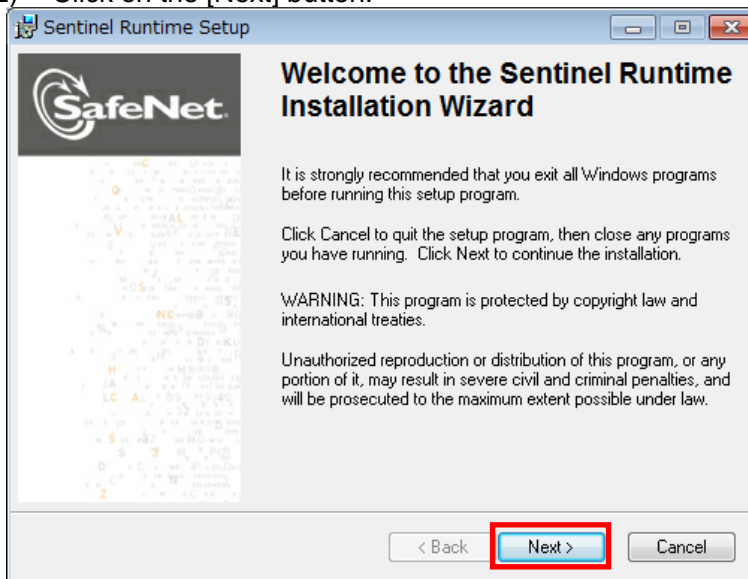
2.2.2 Installing the device driver for the hardware key

- (1) Click on [Install Hardware key Driver] in the installation screen.
Click on the [Run] button to start up the installer.

If the user account control screen as shown on the right appears, click on the [Yes] button to continue the installation.



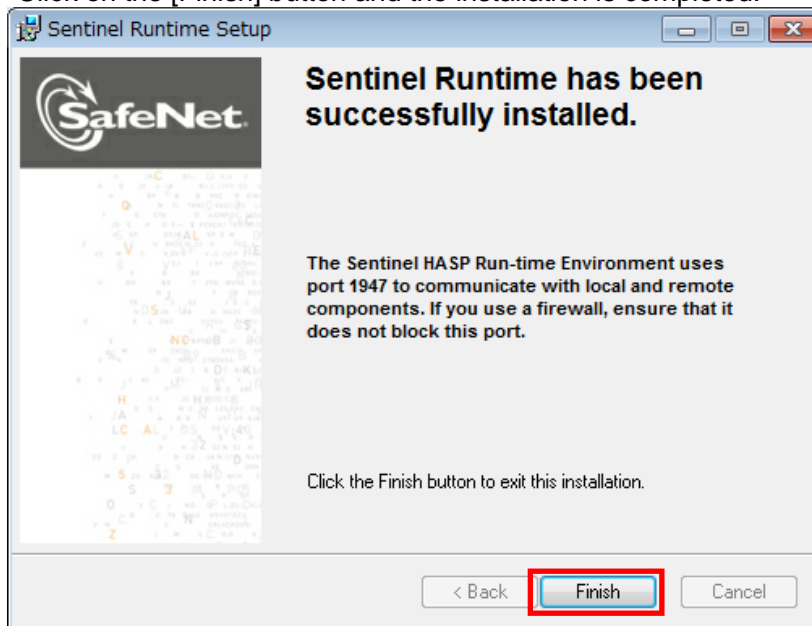
- (2) Click on the [Next] button.



- (3) The screen shown below is displayed. The License Agreement is displayed. Select [I accept the license agreement] and click on the [Next] button. The installation is started.



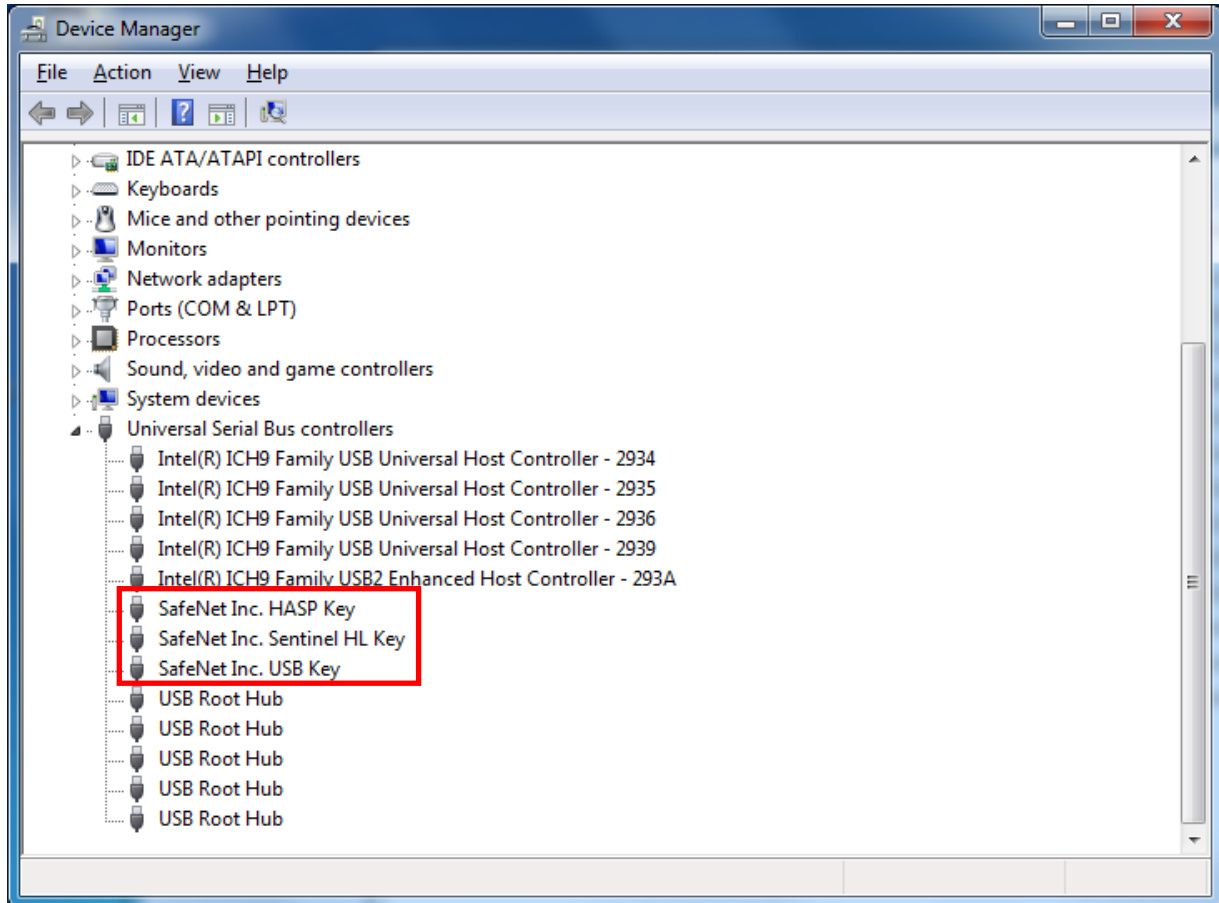
- (4) The completion screen of the installation is displayed. Click on the [Finish] button and the installation is completed.



(5) Connecting the hardware key

Connect the hardware key to the USB port on the computer.

Use the Device Manager to check that the hardware key has been recognized.

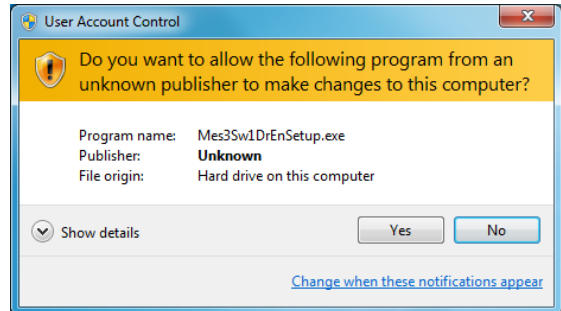


- * Refer to the online help or other manuals provided with the used operating system for the procedure to display the Device Manager.

2.2.3 Installing EcoMeasure III

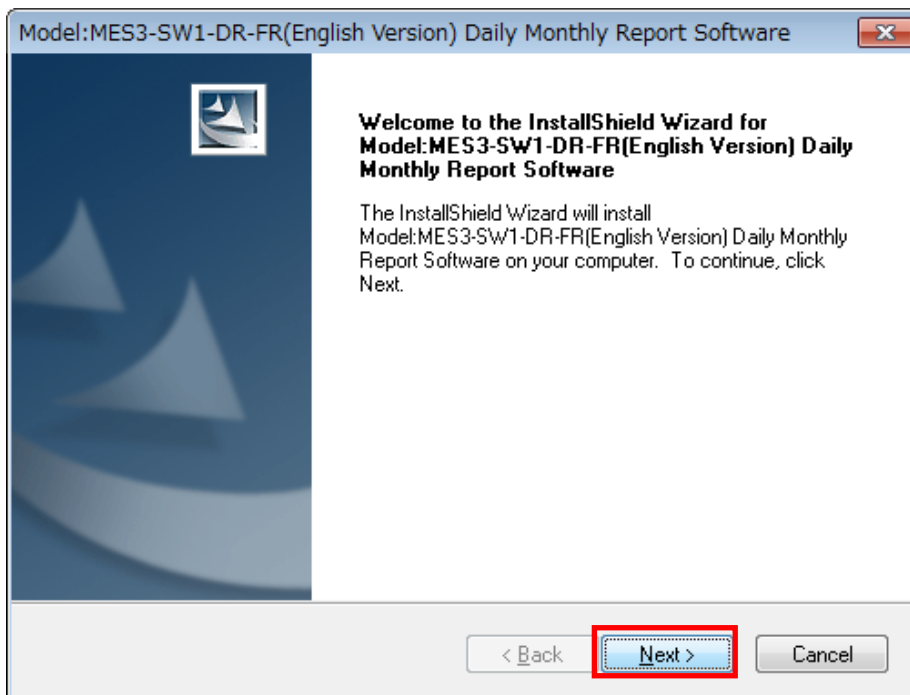
- (1) Click on [Install Daily Monthly Report Software] in the installation screen.
Click on the [Run] button.

* If the screen as shown on the right is displayed, click on the [Yes] button to continue the installation.

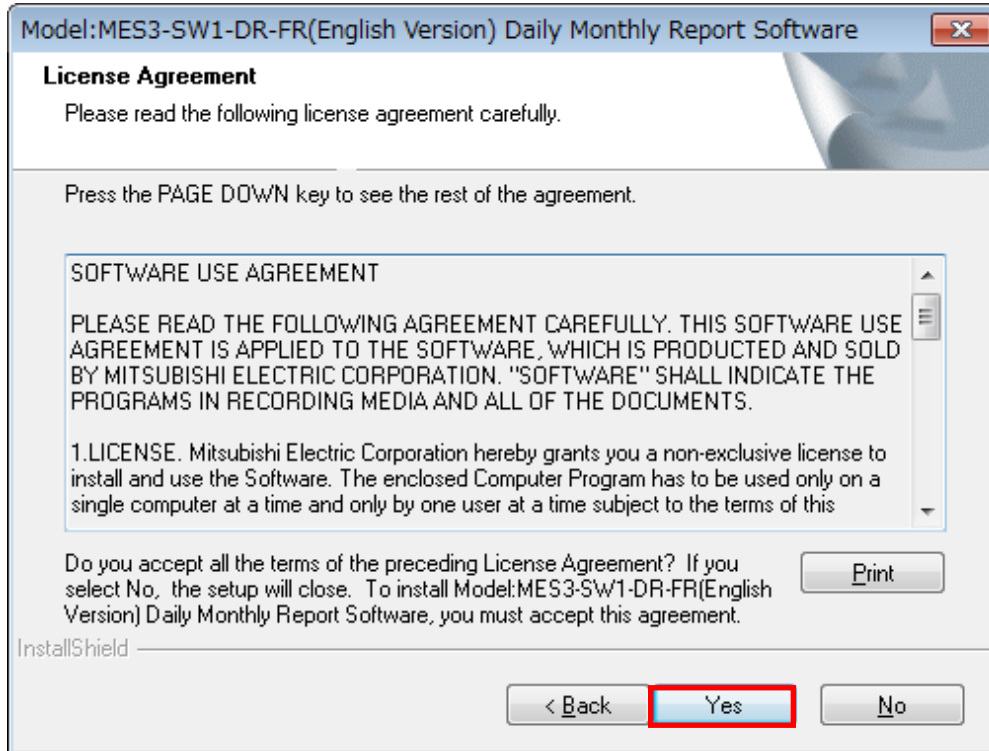


* Please launch [Mes3Sw1DrenSetup.exe] in [MES3-SW1-DR-EN] folder from explorer when EXE file is not allowed to launch by a HTML.

- (2) The InstallShield Wizard screen for the Daily Monthly Report Software is displayed.
Click on the [Next] button.

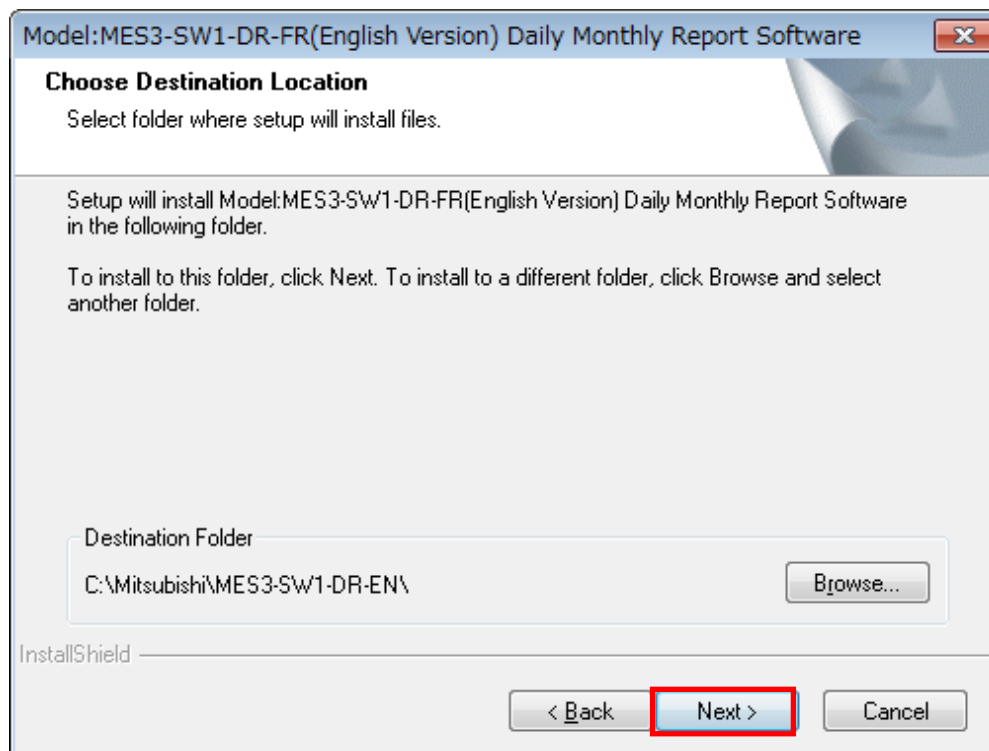


- (3) Read the displayed License Agreement and click on the [Yes] button if you agree with its terms.



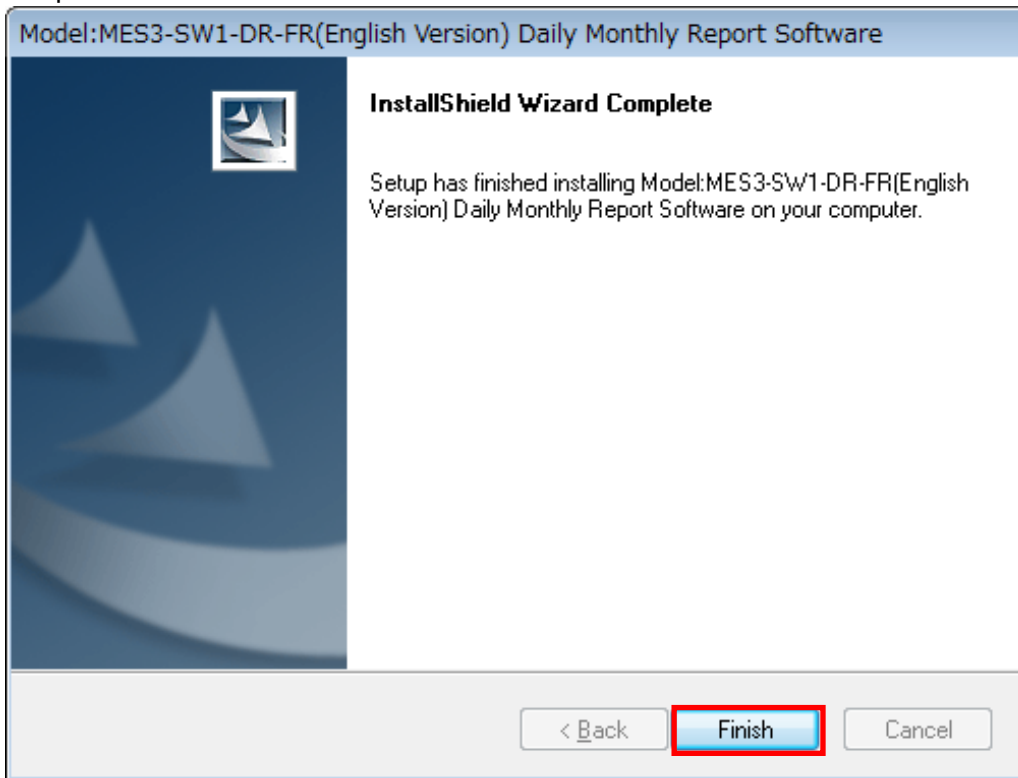
If the [No] button is selected (if you do not agree with the terms of the License Agreement), the installation is terminated.

- (4) Select the installation destination and click on the [Next] button to start the installation.



* By default, the software is installed in "C:\Mitsubishi\MES3-SW1-DR-EN."

- (5) When the screen shown below is displayed, click on the [Finish] button. The installation is completed.



- * Depending on the environment being used, the restart of the computer may be required after the completion of the installation.
In such a case, follow the displayed message and restart the computer.

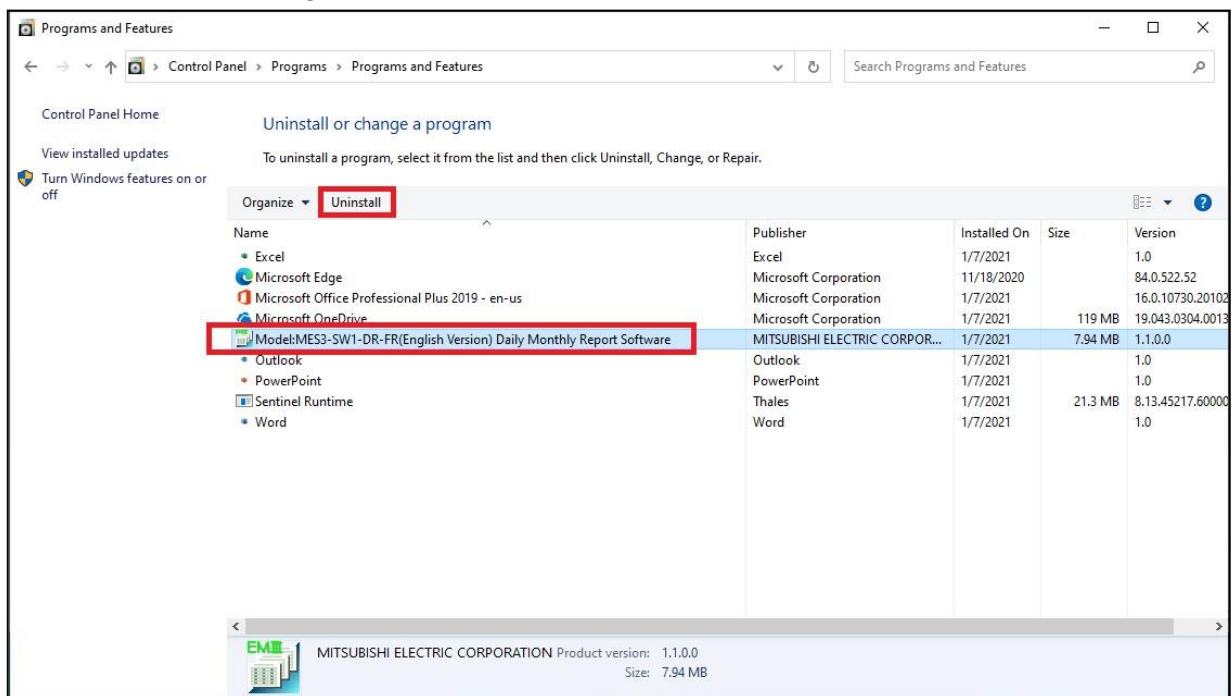
2.3 Uninstalling the software

When this software is no longer necessary, it can be easily deleted from the computer using the installer.

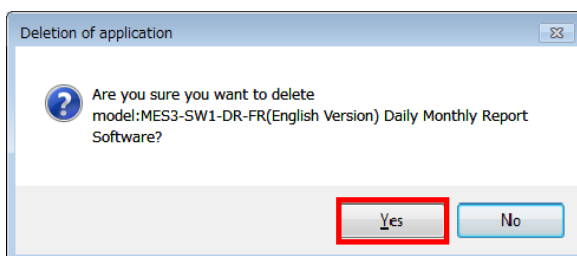
* To uninstall the software, it is necessary to log in the computer as a user having an administrator authority.

2.3.1 Uninstalling EcoMeasure III

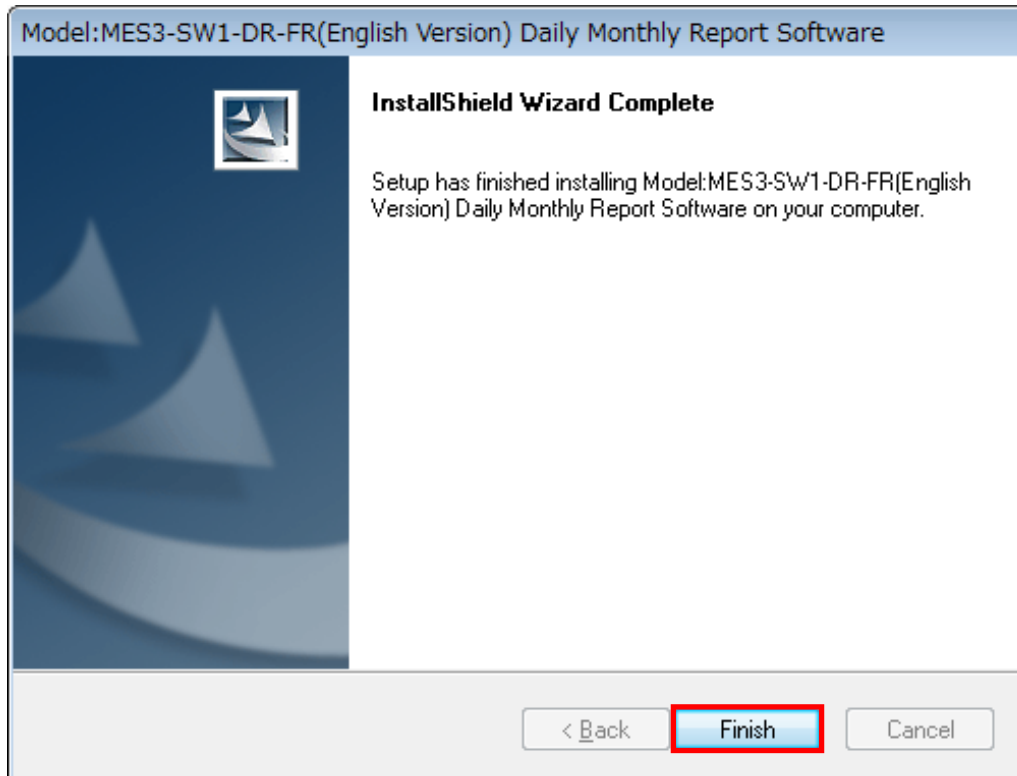
- (1) Open the Control Panel and uninstall the program.
On Windows 8.1 / 10 : Select “Programs” – “Uninstall a program”
- (2) Select “Model: MES3-SW1-DR-FR(English Version) Daily Monthly Report Software” from the list and then click on the “Uninstall” or “Delete” button.



- (3) The confirmation message will be displayed. Click on the [Yes] button. The uninstallation is started.



(4) Click on the [Finish] button. The uninstallation is completed.



* The specific consumption CSV folders and report folders which have been created during use will not be deleted.

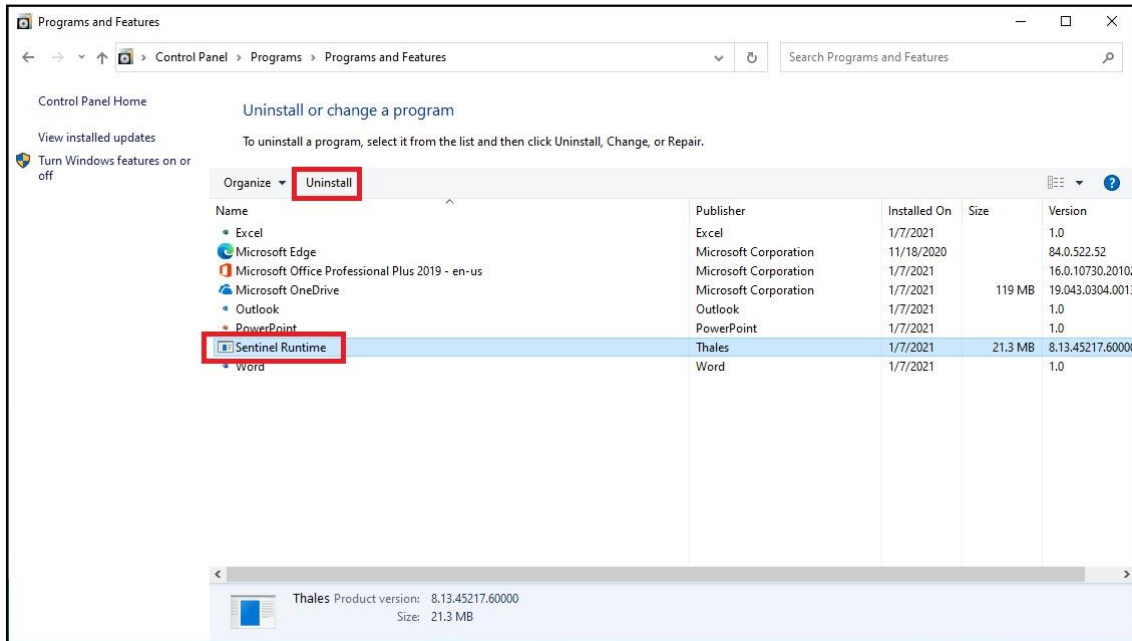
Note that the setting data will be deleted.

2.3.2 Uninstalling the device driver for the hardware key

(1) In the Control Panel, select the device driver for the hardware (*) using “Programs” – “Uninstall a program”, and click on the “Uninstall” or “Delete” button.

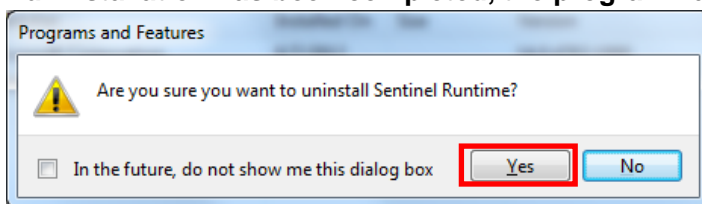
* The name of the device driver for the hardware differs as shown below depending on the version being used.

- “Sentinel Runtime”
- “HASP SRM Run-time”
- “HASP HL Drive Driver”
- “HASP Device Driver”

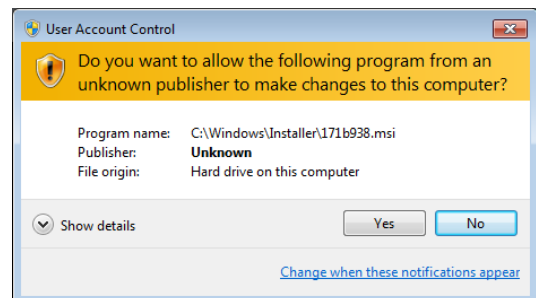


(2) When the confirmation message is displayed, click on the [Yes] button. The uninstallation is executed.

(There is no message displayed to indicate that the uninstallation has finished. When the uninstallation has been completed, the program name is deleted from the list.)



* If a screen as shown on the right is displayed, click on the [Yes] button to continue the uninstallation.



Memo

Software License Agreement

This "Software License Agreement" (hereinafter called this "Agreement") applies to this software produced and sold by Mitsubishi Electric Corporation (hereinafter called the "Company"). The term "Software" means the programs on storage media and also all related documentation.

Article 1 (Right of Use)

Through this Agreement, the Company agrees to provide the user with the right of use and the user accepts the following conditions and agrees not to transfer this right of use to any other person and agrees that the right of use is not exclusive.

Article 2 (Software Duplication)

The user shall not copy all or any part of this software. However, copying will be allowed in the cases covered by (1) below.

(1) For reasons of safety measures for this software, it is possible to copy it with the purpose of using it exclusively on a specified computer. However, this only applies to software on which the Company has altered this software to make it possible to copy it.

Article 3 (Use on Other Than Specified Computers)

There shall be no use on computers other than those specified. However, in the situations outlined below, temporary use on a computer other than that specified shall be possible, provided that the use is only until the situation has ended.

- (1) When the specified computer cannot be used due to work such as maintenance inspections, adjustments, or failures.
- (2) When the installation of the specified computer has not yet been completed.

Article 4 (Restriction of Liability)

(1) The Company does not guarantee that this software is appropriate or useful for any specific objective of the user.

(2) The Company will accept no liability for any damages suffered by the user or for any claims placed on the user by a third party which arise as a result of the user exercising the right of use as approved by this Agreement.

Article 5 (Changes in Use to This Software)

The user shall not be allowed to change this software without written permission from the Company. Also, the Company shall accept no responsibility for software changed by the user.

Article 6 (Copyright)

The copyright for this software belongs to the Company. The copyright for any copies made as regulated in Article 2 also belongs to the Company. However, the storage media on which this software is recorded do not belong to the Company.

Article 7 (Confidentiality)

The users shall treat this software, its copies, and all related materials as confidential and shall not disclose any of them.

The user shall not disclose to a third party any confidential information concerning the work of the Company which has been learned based on this Agreement.

Article 8 (Term of Contract)

This Agreement shall continue to be effective from the time the user agrees with this Agreement and installs this software until the time the agreement loses effect in the cases in each item below.

- (1) The user may end the right of use within one (1) month of notifying the Company in writing.
- (2) The Company may end the right of use if the user violates any of the terms of this Agreement.

Article 9 (Prohibition of Export)

Unless written permission is obtained from the Company in advance, the user shall not take or send this software out of Japan.

Article 10 (Termination)

When the right of use in this Agreement is terminated, within one (1) month from the date of that termination the original and copies and all printed matter, etc., of this software must be returned to the Company, or else a certificate to prove that these have been destroyed must be sent to the Company. All costs for the returning and/or destruction shall be borne by the user.

Daily Monthly Report Software EcoMeasure III

Service Network

Country/Region	Corporation Name	Address	Telephone
Australia	Mitsubishi Electric Australia Pty. Ltd.	348 Victoria Road, Rydalmere, N.S.W. 2116, Australia	+61-2-9684-7777
Algeria	Mec Casa	Rue i N 125 Hay-Es-Salem, 02000, W-Chief, Algeria	+213-27798069
Bangladesh	PROGRESSIVE TRADING CORPORATION	HAQUE TOWER, 2ND FLOOR, 610/11, JUBILEE ROAD, CHITTAGONG, BANGLADESH	+880-31-624307
	ELECTRO MECH AUTOMATION & ENGINEERING LTD.	SHATABDI CENTER, 12TH FLOOR, SUITES-12-B, 292, INNER CIRCULAR ROAD, FAKIRA POOL, MOTIJHEEL, DHAKA-1000, BANGLADESH	+88-02-7192826
Belarus	Tehnikon	Oktyabrskaya 19, Off. 705, BY-220030 Minsk, Belarus	+375 (0)17 / 210 46 26
Belgium	Koning & Hartman B.V.	Woluwelaan 31, BE-1800 Vilvoorde, Belgium	+32 (0)2 / 2570240
Brazil	Mitsubishi Electric do Brasil Comércio e Serviços Ltda.	Avenida Adelino Cardana, 293 - 21º Andar, Bethaville, Barueri, SP, Brasil, CEP 06401-147	+55-11-4689-3000
Cambodia	DHINIMEX CO.,LTD	#245, St. Tep Phan, Phnom Penh, Cambodia	+855-23-997-725
Central America	Automation International LLC	7050 W. Palmetto Park Road Suite #15 PMB #555, Boca Raton, FL 33433	+1-561-237-5228
Chile	Rhona S.A. (Main office)	Vte. Agua Santa 4211 Casilla 30-D (P.O. Box) Vina del Mar, Chile	+56-32-2-320-600
	Mitsubishi Electric Automation (China) Ltd.	Mitsubishi Electric Automation Building, No.1386 Hongqiao Road, Shanghai, China 200336	+86-21-2322-3030
	Mitsubishi Electric Automation (China) Ltd. Beijing	5/F, ONE INDIGO, 20 Jiuxianqiao Road Chaoyang District, Beijing, China 100016	+86-10-6518-8830
	Mitsubishi Electric Automation (China) Ltd. ShenZhen	Level 8, Galaxy World Tower B, 1 Yabao Road, Longgang District, Shenzhen, China 518129	+86-755-2399-8272
	Mitsubishi Electric Automation (China) Ltd. GuangZhou	Rm.1006, A1 Times E-Park, No.276-282, Hanxi Road East, Zhongcun Street, Panyu Distric, Guangzhou, China 510030	+86-20-8923-6730
	Mitsubishi Electric Automation (China) Ltd. ChengDu	1501-1503, 15F, Guang-hua Centre Building-C, No.98 North Guang Hua 3th Rd Chengdu, China 610000	+86-28-8446-8030
	Mitsubishi Electric Automation (Hong Kong) Ltd.	20/F., Cityplaza One, 1111 King's Road, Taikoo shing, Hong Kong	+852-2510-0555
Colombia	Proelectrico Representaciones S.A.	Carrera 42 N° 75 - 367 Bodega 09, Itagüí, Medellín, Antioquia, Colombia	+57-4-4441284
Czech Republic	AUTOCONT CONTROL SYSTEMS S.R.O	Technologická 374/6, CZ-708 00 Ostrava - Pustkovec	+420 595 691 150
Denmark	BEIJER ELECTRONICS A/S	LYKKEGARDSVEJ 17, DK-4000 ROSKILDE, Denmark	+45 (0)46/75 76 66
Egypt	Cairo Electrical Group	9, Rostoum St. Garden City P.O. Box 165-11516 Maglis El-Shaah, Cairo - Egypt	+20-2-27961337
France	Mitsubishi Electric Europe B.V. French Branch	FR-92741 Nanterre Cedex	+33 (0)1 55 68 57 01
Germany	Mitsubishi Electric Europe B.V.	Mitsubishi-Electric-Platz 1, 40882 Ratingen, Germany	+49 (0) 2102 4860
Greece	KALAMARAKIS - SAPOUNAS S.A.	IONIAS & NEROMILOU STR., CHAMOMILOS ACHARNES, ATHENS, 13678 Greece	+30-2102 406000
	UTECO	5, MAVROGENOUS STR., 18542 PIRAEUS, Greece	+30-211-1206-900
Hungary	Meltrade Ltd.	Fertő utca 14, HU-1107 Budapest, Hungary	+36 (0)1-431-9726
	Mitsubishi Electric India Private Limited	2nd Floor, Tower A&B, Cyber Greens, DLF Cyber City, DLF Phase-III, Gurgaon - 122 022 Haryana, India	+91-124-4630300
	Mitsubishi Electric India Private Limited Pune Sales Office	ICC-Devi Gaurav Technology Park, Unit no. 402, Fourth Floor, Survey no. 191-192 (P), Opp. Vallabh Nagar Bus Depot, Pune - 411018, Maharashtra, India	+91-20-68192100
	Mitsubishi Electric India Private Limited FA Center	204-209, 2nd Floor, 31FIVE, Corporate Road, Prahladnagar, Ahmedabad 380015, Gujarat, India	+91-79677-77888
Indonesia	PT.Mitsubishi Electric Indonesia	Gedung Jaya 8th floor, J.L.MH. Thamrin No.12 Jakarta Pusat 10340, Indonesia	+62-21-3192-6461
	P.T. Sahabat Indonesia	P.O.Box 5045 Kawasan Industri Perogudangan, Jakarta, Indonesia	+62-(0)21-6610651-9
Ireland	Mitsubishi Electric Europe B.V.	Westgate Business Park, Ballymount, IRL-Dublin 24, Ireland	+353 (0)1-4198800
Israel	Gino Industries Ltd.	26, Ophir Street IL-32235 Haifa, Israel	+972 (0)4-867-0656
Italy	Mitsubishi Electric Europe B.V.	Viale Colleoni 7, I-20041 Agrate Brianza (Mi), Italy	+39 039-60531
Kazakhstan	Kazpromavtomatika	Ul. Zhambyla 28, KAZ - 100017 Karaganda	+7-7212-501000
Korea	Mitsubishi Electric Automation Korea Co., Ltd	9F Gangseo Hangang xi-tower A, 401 Yangcheon-ro, Gangseo-gu, Seoul 07528 Korea	+82-2-3660-9573
Laos	AROUNKIT CORPORATION IMPORT-EXPORT SOLE CO.,LTD	SAPHANMO VILLAGE. SAYSETHA DISTRICT, VIENTIANE CAPITAL, LAOS	+856-20-415899
Lebanon	Comptoir d'Electricite Generale-Liban	Cebaco Center - Block A Autostrade Dora, P.O. Box 11-2597 Beirut - Lebanon	+961-1-240445
Lithuania	Rifas UAB	Tinklu 29A, LT-5300 Panevezys, Lithuania	+370 (0)45-582-728
Malaysia	Mitric Sdn Bhd	No. 5 Jalan Pemberita U1/49, Temasya Industrial Park, Glenmarie 40150 Shah Alam, Selangor, Malaysia	+603-5569-3748
	Flexible Automation System Sdn Bhd	60, Jalan USJ 10/1B, UEP Subang Jaya 47620 Selangor Darul Ehsan, Malaysia	+603-5633-1280
Malta	ALFATRADE LTD	99 PAOLA HILL, PAOLA PLA 1702, Malta	+356 (0)21-697-816
Maroco	SCHIELE MAROC	KM 7.2 NOUVELLE ROUTE DE RABAT AIN SEBAA, 20600 Casablanca, Maroco	+212 661 45 15 96
Myanmar	Peace Myanmar Electric Co.,Ltd.	NO137/139 Botahtaung Pagoda Road, Botahtaung Town Ship 11161, Yangon, Myanmar	+95-(0)1-202589
Nepal	Wat&Volt House	KHA 2-65, Volt House Dillibazar Post Box:2108, Kathmandu, Nepal	+977-1-4411330
Netherlands	Imtech Marine & Offshore B.V.	Sluisjesdijk 155, NL-3087 AG Rotterdam, Netherlands	+31 (0)10-487-19 11
North America	Mitsubishi Electric Automation, Inc.	500 Corporate Woods Parkway, Vernon Hills, IL 60061 USA	+847-478-2100
Norway	Scanelec AS	Leirvikasen 43B, NO-5179 Godvik, Norway	+47 (0)55-506000
Mexico	Mitsubishi Electric Automation, Inc. Mexico Branch	Bldv. Miguel de Cervantes Saavedra 301, Torre Norte Piso 5, Col. Ampliación Granada, Miguel Hidalgo, Ciudad de México, CP 11520, México	+52-55-3067-7511
Middle East Arab Countries & Cyprus	Comptoir d'Electricite Generale-International-S.A.L.	Cebaco Center - Block A Autostrade Dora P.O. Box 11-1314 Beirut - Lebanon	+961-1-240430
Pakistan	Prince Electric Co.	2-P GULBERG II, LAHORE, 54600, PAKISTAN	+92-42-575232, 5753373
Peru	Rhona S.A. (Branch office)	Avenida Argentina 2201, Cercado de Lima	+51-1-464-4459
Philippines	MELCO Factory Automation Philippines Inc.	128, Lopez Rizal St., Brgy. Highway Hills, Mandaluyong City, Metro Manila, Philippines	+63-(0)2-256-8042
	Edison Electric Integrated, Inc.	24th Fl. Galleria Corporate Center, Edsa Cr. Ortigas Ave., Quezon City Metro Manila, Philippines	+63-(0)2-634-8691
Poland	Mitsubishi Electric Europe B.V. Polish Branch	Krakowska 48, 32-083 Balice, Poland	+48 12 347 65 00
Republic of Moldova	Intehsis SRL	bld. Traian 23/1, MD-2060 Kishinev, Moldova	+373 (0)22-66-4242
Romania	Sirius Trading & Services SRL	RO-060841 Bucuresti, Sector 6 Alea Lacul Morii Nr. 3	+40-(0)21-430-40-06
Russia	Mitsubishi Electric (Russia) LLC	2 bld. 1, Letnikovskaya street, Moscow, 115114, Russia	+7 495 721-2070
Saudi Arabia	Center of Electrical Goods	Al-Shuwayer St. Side way of Salahuddin Al-Ayoubi St. P.O. Box 15955 Riyadh 11454 - Saudi Arabia	+966-1-4770149
Singapore	Mitsubishi Electric Asia Pte. Ltd.	307 Alexandra Road, Mitsubishi Electric Building, Singapore 159943	+65-6473-2308
Slovakia	PROCONT, Presov SIMAP	Kupelna 1/1, SK - 08001 Presov, Slovakia Jana Derku 1671, SK - 91101 Trencin, Slovakia	+421 (0)51 - 7580 611 +421 (0)32 743 04 72
Slovenia	Inea RBT d.o.o.	Stegne 11, SI-1000 Ljubljana, Slovenia	+386 (0)1-513-8116
South Africa	CBI-electric: low voltage	Private Bag 2016, ZA-1600 Isando Gauteng, South Africa	+27-(0)11-9282000
Spain	Mitsubishi Electric Europe B.V. Spanish Branch	Carretera de Rubí 76-80, E-08190 Sant Cugat del Valles (Barcelona), Spain	+34 (0)93-565-3131
Sweden	Mitsubishi Electric Europe B.V. (Scandinavia)	Hedvig Möllers gata 6, 223 55 Lund, Sweden	+46 (0)8-625-10-00
	Euro Energy Components AB	Järnvägsgatan 36, S-434 24 Kungälv, Sweden	+46 (0)300-690040
Switzerland	TriElec AG	Muehlentalstrasse 136, CH-8201 Schaffhausen, Switzerland	+41-(0)52-6258425
Taiwan	Setsuyo Enterprise Co., Ltd	5th Fl., No.105, Wu Kung 3rd, Wu-Ku Hsiang, Taipei, Taiwan, R.O.C.	+886-(0)2-2298-8889
	United Trading & Import Co., Ltd.	77/12 Bamrunmuang Road, Klong Mahanak Pomprab Bangkok Thailand	+66-223-4220-3
Thailand	MITSUBISHI ELECTRIC FACTORY AUTOMATION (THAILAND) CO.,LTD	101, True Digital Park Office, 5th Floor, Sukhumvit Road, Bangchak, Phara Khanong, Bangkok, 10260 Thailand	+662-092-8600
Tunisia	MOTRA Electric	3, Résidence Imen, Avenue des Martyrs Mourouj III, 2074 - El Mourouj III Ben Arous, Tunisia	+216-71 474 599
Turkey	Mitsubishi Electric Turkey A.Ş.	Şerifali Mahallesi Kale Sokak No: 41 34775 Ümraniye, Istanbul, Turkey	+90-216-969-2666
United Kingdom	Mitsubishi Electric Europe B.V.	Travellers Lane, UK-Hatfield, Herts. AL10 8XB, United Kingdom	+44 (0)1707-276100
Uruguay	Fierro Vignoli S.A.	Avda. Uruguay 1274 Montevideo Uruguay	+598-2-902-0808
	Mitsubishi Electric Vietnam Co.,Ltd. Head Office	11th & 12th Floor, Viettel Tower B, 285 Cach Mang Thang 8 Street, Ward 12, District 10, Ho Chi Minh City, Vietnam	+84-28-3910-5945
Vietnam	Mitsubishi Electric Vietnam Co.,Ltd. Hanoi Branch	24th Floor, Handico Tower, Pham Hung Road, khu do thi moi Me Tri Ha, Nam Tu Liem District, Hanoi City, Vietnam	+84-24-3937-8075

MITSUBISHI ELECTRIC CORPORATION
HEAD OFFICE: TOKYO BUILDING, 2-7-3, MARUNOUCHI, CHIYODA-KU, TOKYO 100-8310, JAPAN