



# File converter for EcoAdviser

User's Manual

- Before operating the instrument, you should first read thoroughly this operation manual for safe operation and optimized performance of the product. Deliver this user's manual to the end user.

## Introduction

Thank you for your patronage. We appreciate your purchase of Mitsubishi Electric Energy Saving Support Software EcoAdviser.

This manual explains the operation of File converter for EcoAdviser.

Please read this manual carefully to ensure correct use.

## Disclaimer

- Be sure to read and understand “The Software end user license agreement” in the end of this manual when you use this software.
- Our company is not liable for customer for system failure due to the customer or the third party, for any legal issues, and for any loss resulting directly or indirectly from misuse or malfunction of this software.
- Our company is not liable for any difficulties (being file corrupted, trouble or malfunction of the computer and conversion file source, and their system failure) that occur when importing the conversion source file to the customer’s computer.
- The screen images and operation procedures described in this manual may differ depending on an operating system in use and its version.
- This manual uses screen images of Energy Saving Data Analysis and Diagnosis Software (model: MES3-EAP1-AI) when explaining the EcoAdviser operating procedures.

## Related materials

Material name	Ref. No.
Mitsubishi Electric Energy Saving Support Software EcoAdviser Energy Saving Data Analysis Software Energy Saving Data Analysis and Diagnosis Software MODEL MES3-EAP1-DA MES3-EAP1-AI User’s Manual	IB63E58
Logging Unit for Energy Measuring Unit MODEL EMU4-LM User’s Manual (Details)	IB63780
Energy Measuring Unit MODBUS corresponding Data Acquisition Software MODEL EMU4-SW1 User’s Manual	IB63G17
MELSEC iQ-R CPU Module User’s Manual (Application)	SH-081264ENG
MELSEC iQ-R High Speed Data Logger Module User’s Manual (Application)	SH-081562ENG
MELSEC iQ-F FX5 User’s Manual (Application)	JY997D55401
QnUDVCPUL/LCPU User’s Manual (Data Logging Function)	SH-080893ENG
High Speed Data Logger Module User’s Manual	SH-080818ENG

## Terms

Unless otherwise specified, this manual uses the following terms.

Term	Description
Logging file	A conversion source file.
Logging cycle	A data interval in logging file

## Generic terms and abbreviations

Unless otherwise specified, this manual uses the following generic terms and abbreviations.

Generic term/abbreviation	Description
Logging Unit	Logging Unit for Energy Measuring Unit (Model:EMU4-LM).
Data Acquisition Software	Energy Measuring Unit MODBUS corresponding Data Acquisition Software (Model:EMU4-SW1).
MELSEC	Programmable Controllers MELSEC.

## Table of contents

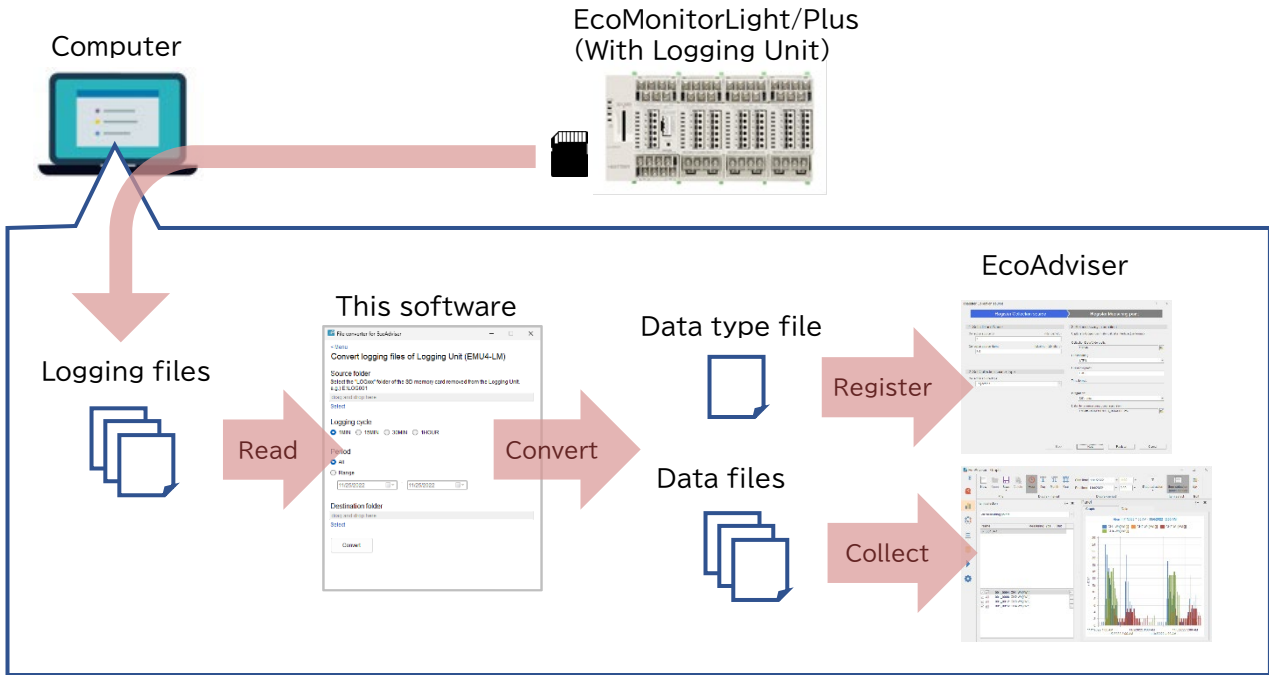
<b>Introduction</b> .....	<b>1</b>
Disclaimer .....	1
Related materials .....	1
Terms.....	2
Generic terms and abbreviations.....	2
<b>Table of contents</b> .....	<b>3</b>
<b>1 Overview</b> .....	<b>4</b>
<b>2 System configuration</b> .....	<b>6</b>
2.1 Operating Environment .....	6
2.2 Supported models / logging files .....	6
2.3 Restrictions.....	6
<b>3 Preparation before use</b> .....	<b>8</b>
3.1 Download.....	8
<b>4 Basic operation</b> .....	<b>9</b>
4.1 Start and exit .....	9
4.2 Execute each function .....	11
<b>5 Convert the logging files of the Logging Unit</b> .....	<b>12</b>
5.1 Prepare the logging files .....	12
5.2 Convert the logging files .....	13
5.3 Register “Collection source” with EcoAdviser.....	15
5.4 Collect data with EcoAdviser .....	20
<b>6 Convert the logging files of the Data Acquisition Software</b> .....	<b>22</b>
6.1 Prepare the logging files .....	22
6.2 Convert the logging files .....	22
6.3 Register “Collection source” with EcoAdviser.....	25
6.4 Collect data with EcoAdviser .....	30
<b>7 Convert the logging files of the MELSEC</b> .....	<b>32</b>
7.1 Prepare the logging files .....	32
7.2 Convert the logging files .....	32
7.3 Register “Collection source” with EcoAdviser.....	34
7.4 Collect data with EcoAdviser .....	39
<b>8 Troubleshooting</b> .....	<b>41</b>
8.1 Error message and corrective action .....	41
8.2 Troubleshooting when collecting data with EcoAdviser.....	42
<b>9 Appendix</b> .....	<b>43</b>
9.1 Q&A .....	43
9.2 Release notes .....	43
<b>Trademarks</b> .....	<b>44</b>
<b>The Software end user license agreement</b> .....	<b>45</b>

# 1 Overview

This software is a tool that converts logging files of Logging Unit, Data Acquisition Software or MELSEC into formats that can be collected by EcoAdviser. Converted files can be manually collected with EcoAdviser and used for graphs and reports.

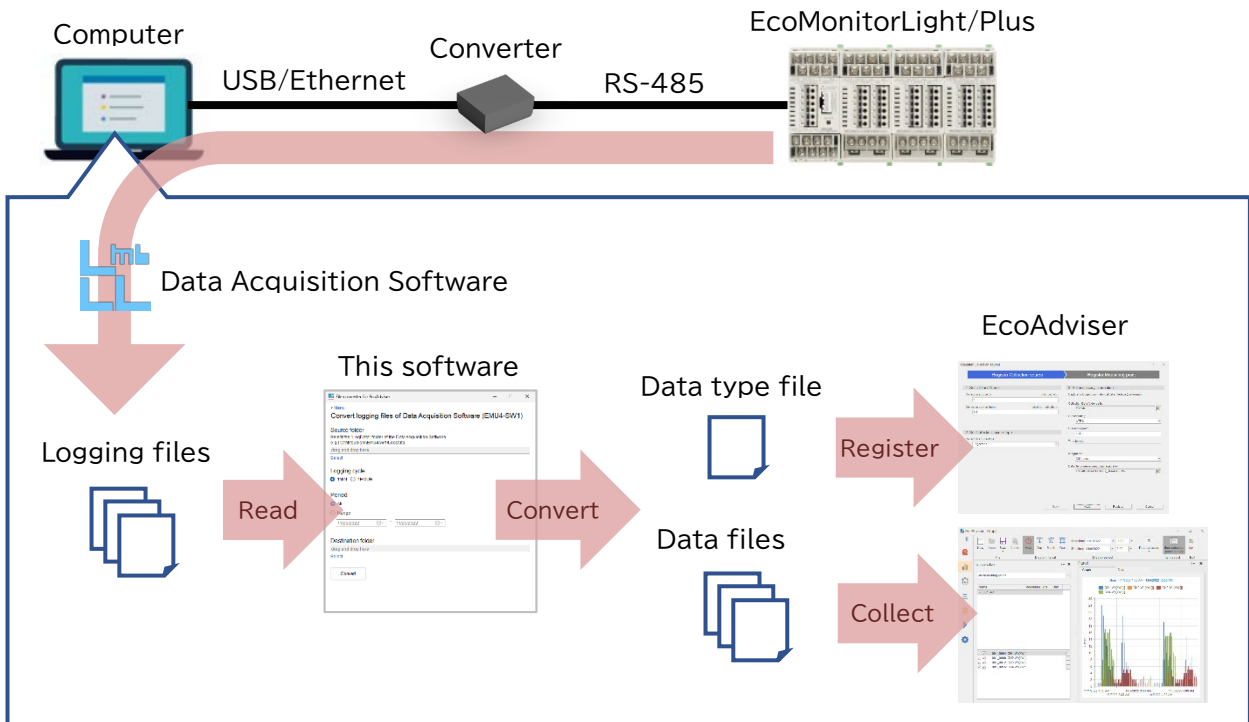
## Impression: Logging Unit

The data logged by the Logging Unit is imported from the SD memory card to the computer, and this software converts it into a format that can be collected by EcoAdviser.



## Impression: Data Acquisition Software

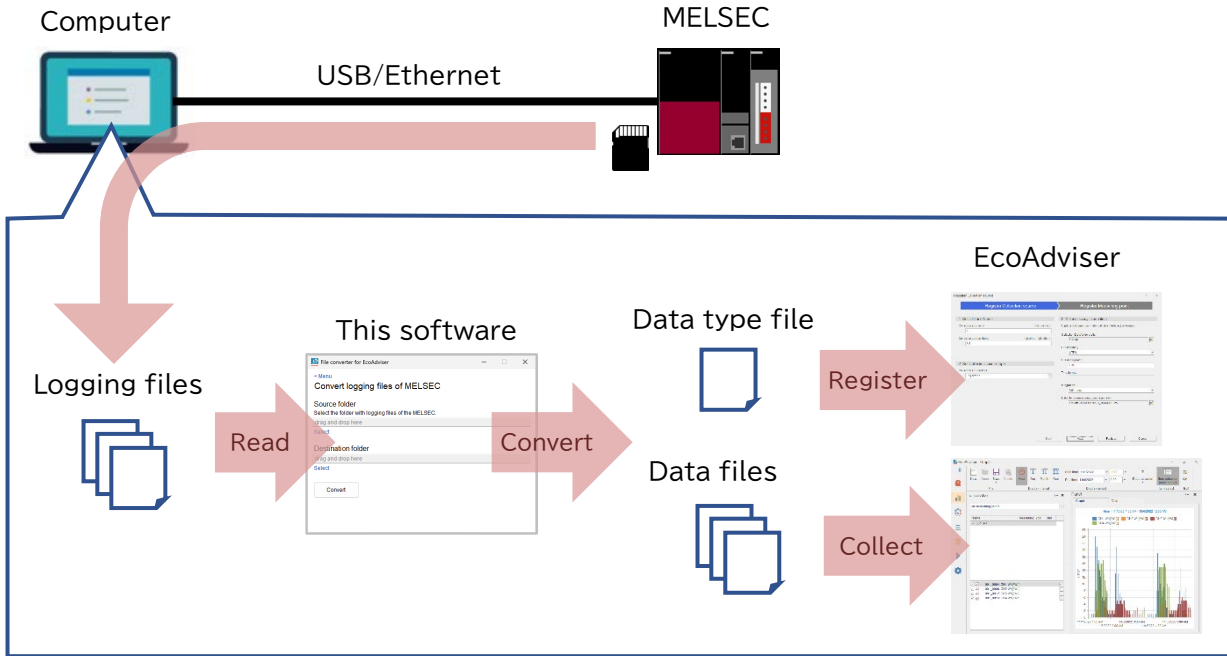
This software converts the data logged by the Data Acquisition Software into a format that can be collected by EcoAdviser.



**Impression: MELSEC**

The data logged by MELSEC is imported into a computer, and this software converts it into a format that can be collected by EcoAdviser.

- ✓ Please refer to the MELSEC user's manual for how to import the MELSEC logging file to your computer.



## 2 System configuration

### 2.1 Operating Environment

The operating environment of this software is as follows.

Item	Contents
Operating system	Microsoft Windows 11 Pro (64bit) Microsoft Windows 10 Pro (32bit/64bit)
.NET Framework	Microsoft .NET Framework 4.6.2

### 2.2 Supported models / logging files

Supported models and logging files of this software are as follows.

Model	Logging cycle of Logging file	Availability in EcoAdviser (●: Available –: Unavailable)	
		Data analysis function (Graph, Report)	Data diagnosis function
Logging Unit	1 Min.	—	●
	15 Min.	●*1	—
	30 Min.		
	1 Hour		
Data Acquisition Software	1 Min.	●*2	●
	1 Hour	●	—
MELSEC	1 Min. or less	●*2	●*3
	Over 1 Min.	●*2	—

\*1 The data period setting of EcoAdviser and the logging cycle must match.

\*2 EcoAdviser extracts and collects according to the EcoAdviser data cycle setting.

\*3 EcoAdviser extracts and collects at 1-minute intervals.

#### Supported MELSEC series / Logging files

Series	Logging files
MELSEC iQ-R Series	CSV file or Unicode text file logged by the data logging function of the CPU Module.
	CSV file or Unicode text file logged by the High Speed Data Logger Module.
MELSEC iQ-F Series	CSV file logged by the data logging function of the CPU Module.
MELSEC-L Series	CSV file logged by the data logging function of the CPU Module.
MELSEC-Q Series	CSV file logged by the data logging function of the CPU Module (QnUDVCPU).
	CSV file logged by the High Speed Data Logger Module.

### 2.3 Restrictions

Describes restrictions on logging files.

#### Restrictions: Logging Unit

The following restrictions apply to the logging file of the Logging Unit.

Item	Restriction	Remarks
Data time	No duplication	If the same data time exist in one file, conversion is possible, but EcoAdviser cannot collect them.

**Restrictions:Data Acquisition Software**

The following restrictions apply to the logging file of the Data Acquisition Software.

Item	Restriction	Remarks
Data name	Maximum 30 letters	If the maximum number of letters is exceeded, conversion is possible, but EcoAdviser cannot register measuring point.
Data time	No duplication	If the same data time exist in one file, conversion is possible, but EcoAdviser cannot collect them.

**Restrictions:MELSEC**

The following restrictions apply to the logging file of the MELSEC.

Item	Restriction	Remarks
Number of records in one file	Maximum 36000 records	If the maximum number of records is exceeded, conversion is possible, but EcoAdviser cannot collect them.
Number of logging items in one file	Maximum 256 points	If the maximum number of points is exceeded, conversion is possible, but EcoAdviser cannot register measuring points.
File name	An 8-digit hexadecimal serial number is required before the extension	Files that do not have an 8-digit hexadecimal serial number before the extension will not be converted.
Data type	Only the following data types can be converted: BIT USHORT SHORT ULONG LONG FLOAT DOUBLE	Data types that cannot be converted are output without conversion. It cannot be registered as a measuring point in EcoAdviser.
Data name	Maximum 30 letters	If the maximum number of letters is exceeded, conversion is possible, but EcoAdviser cannot register measuring point.
	No duplication	If the same data name exist, conversion is possible, but EcoAdviser cannot collect them.
Data time	Data time column required	If there is no data time column, a conversion error will occur.
	No duplication	If the same data time exist in one file, conversion is possible, but EcoAdviser cannot collect them.
Header rows	File information row, data type information row, data name row required	If there is no file information row, data type information row, or data name row, a conversion error will occur.
Integrated value	Indicated value	Difference value may not be collected correctly by EcoAdviser.



## 3 Preparation before use

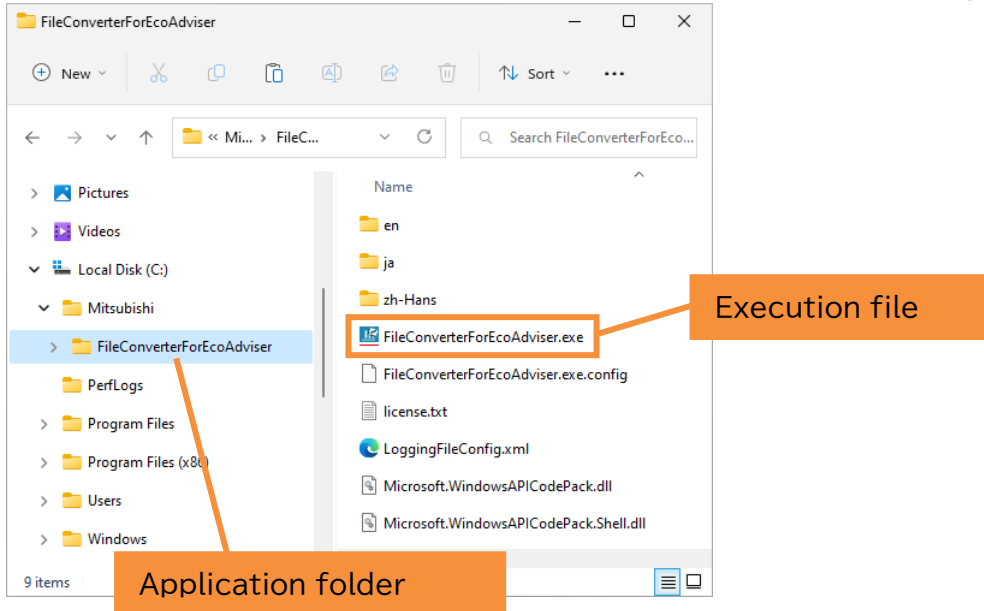
### 3.1 Download

This software can be used by unzipping the downloaded compressed file and copying it to any location (C:\Mitsubishi folder, etc.).

The installation of this software is unnecessary.

#### Folder composition

It becomes the following compositions when copying it to the C:\Mitsubishi folder.



- ✓ Please do not copy it onto the program folder (C:\Program Files folder and C:\Program Files(x86) folder). There is a possibility of not operating normally.
- ✓ Do not rename or delete folders and files. It does not operate normally.
- ✓ Please delete copied application folder (“FileConverterForEcoAdviser” folder) when this software becomes unnecessary.

## 4 Basic operation

### 4.1 Start and exit

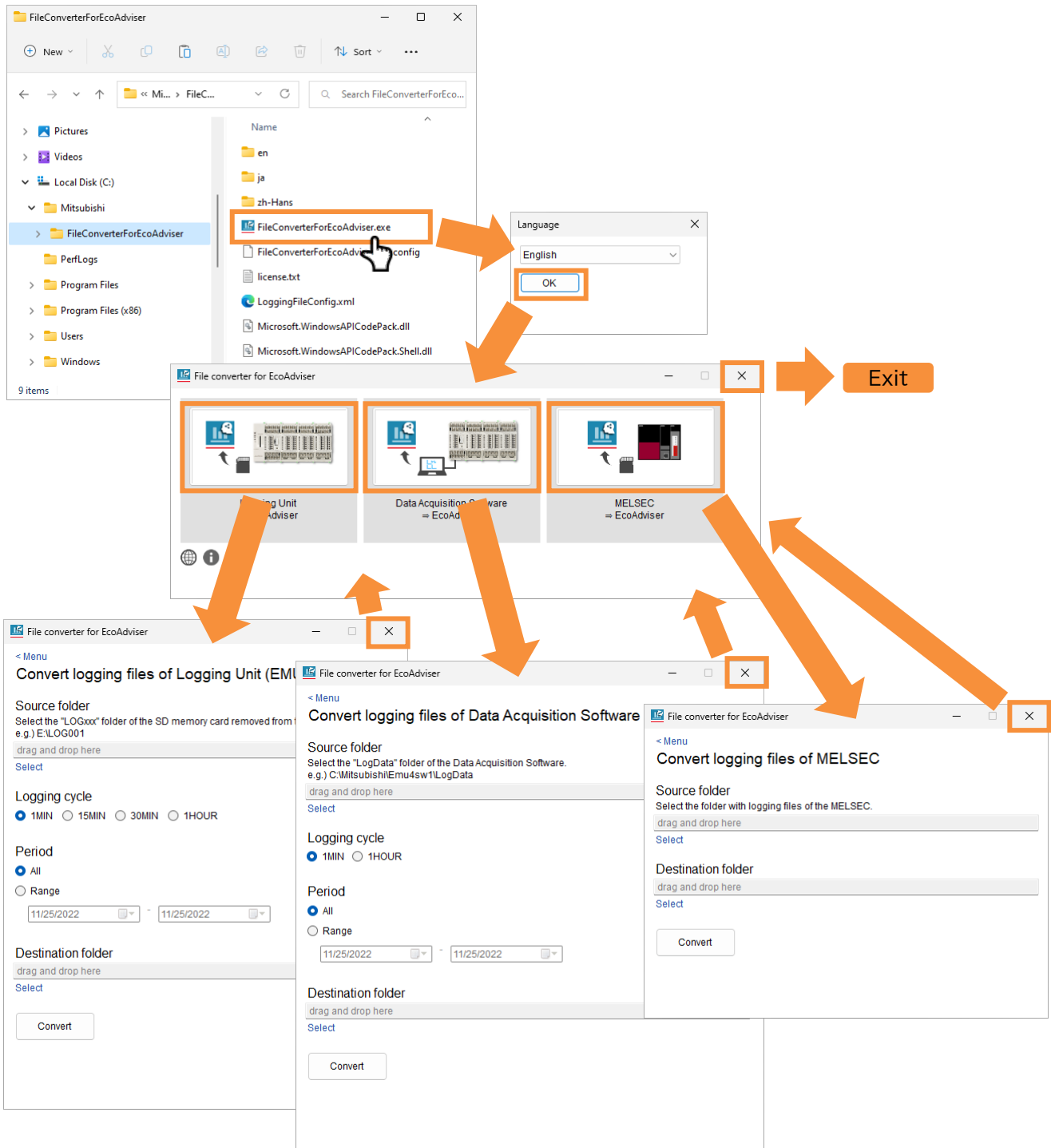
#### First start

Double-click the execution file of this software (FileConverterForEcoAdviser.exe).

Select the language at the first start.

To exit, click the [x] button on the menu screen.

✓ The language can be changed at any time from the menu screen.



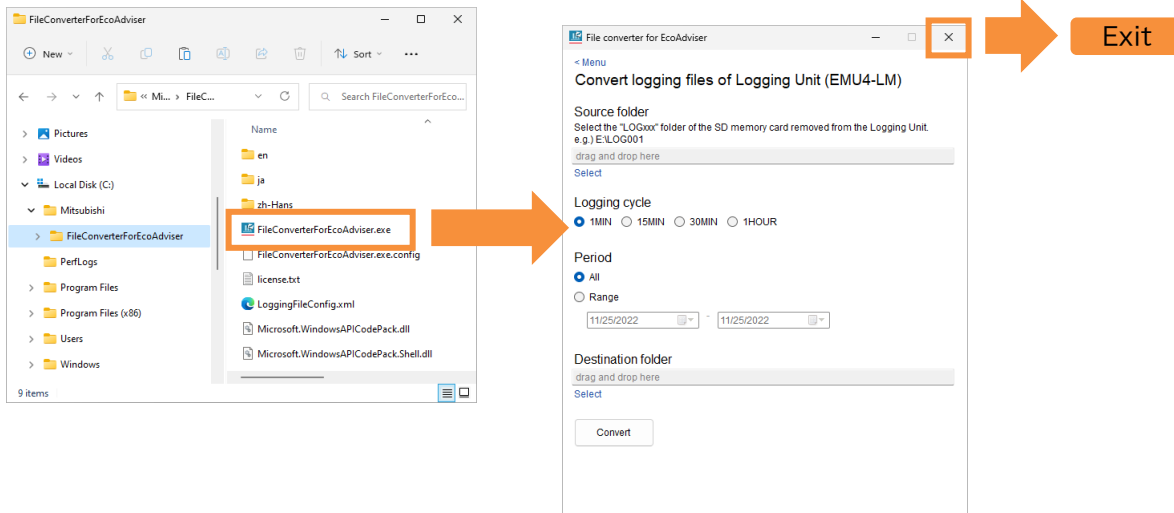
### Second and subsequent start

When starting for the second time or later, the conversion screen displayed last time will be displayed so that you do not have to select from the menu screen each time.

(If neither conversion screen has been displayed, the menu screen will be displayed.)

To exit, click the [×] button on the conversion screen.

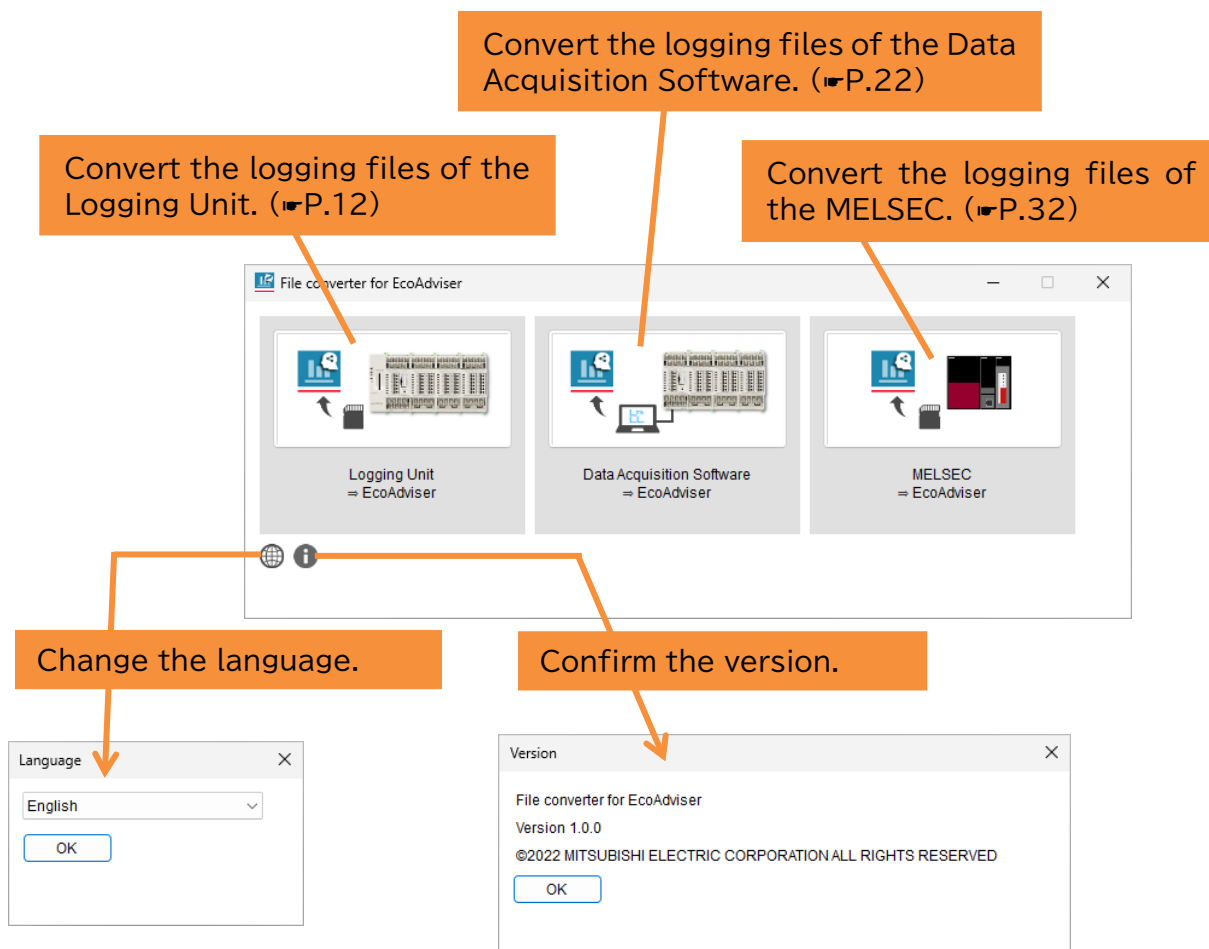
■e.g.) When the conversion screen for Logging Unit was displayed last time



- ✓ If you want to use other conversion functions, click [< Menu] at the top of the screen to return to the menu screen and select a function.
- ✓ If you return to the menu screen and then display any of the conversion screens, clicking the [x] button on the conversion screen will return to the menu screen without exiting. In this case, click the [x] button on the menu screen to exit.

## 4.2 Execute each function

Execute each function from the menu screen.



## 5 Convert the logging files of the Logging Unit

This section describes the procedure from converting the logging files of the Logging Unit to collecting it with EcoAdviser.

### 5.1 Prepare the logging files

Remove the SD memory card from the Logging Unit and insert it into your computer. For the procedure to remove the SD memory card from the Logging Unit, refer to the user's manual of the Logging Unit.

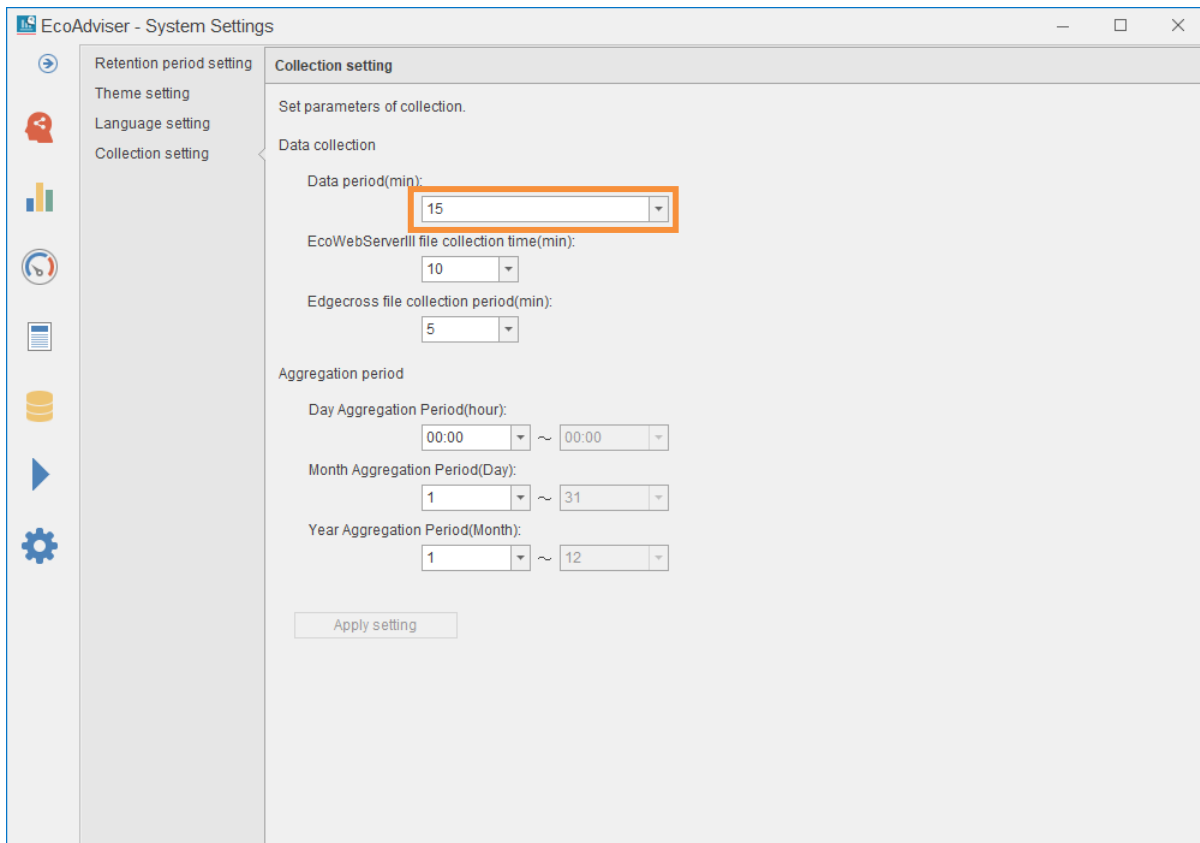
#### About the logging cycle

When using the diagnostic function of EcoAdviser, one minute data is required for the logging cycle.

When using the analysis function of EcoAdviser (graphs, reports), 15 minutes / 30 minutes / one hour data is required for the logging cycle.

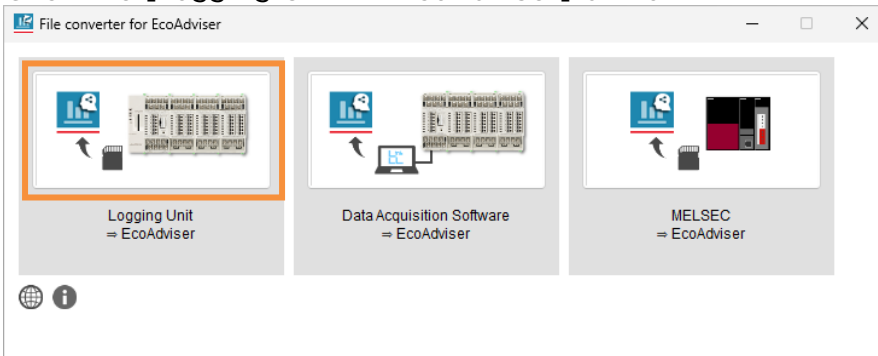
Also, the data period setting of EcoAdviser and the logging cycle of the Logging Unit must match. If they do not match, the integrated value data cannot be collected correctly.

- ✓ You can check the data period setting of EcoAdviser on “System Settings” ⇒ “Collection setting”.

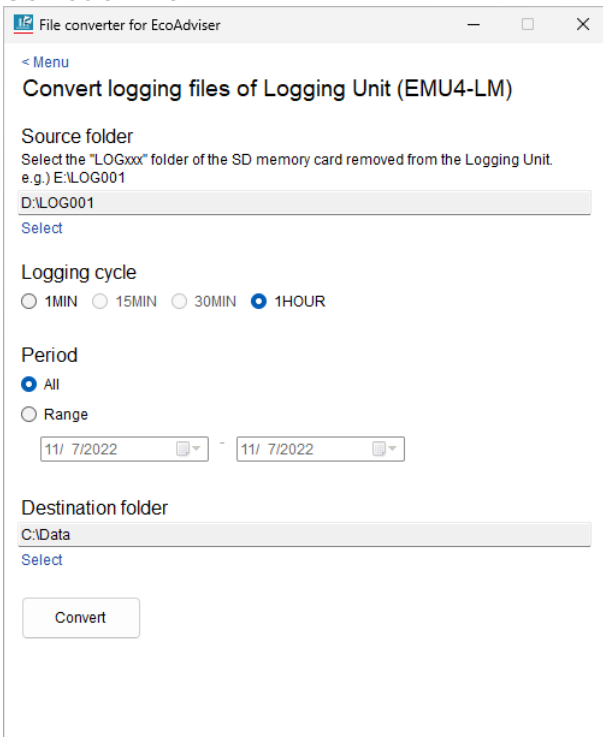


## 5.2 Convert the logging files

1. Click the [Logging Unit ⇒ EcoAdviser] button.



2. Set each item.



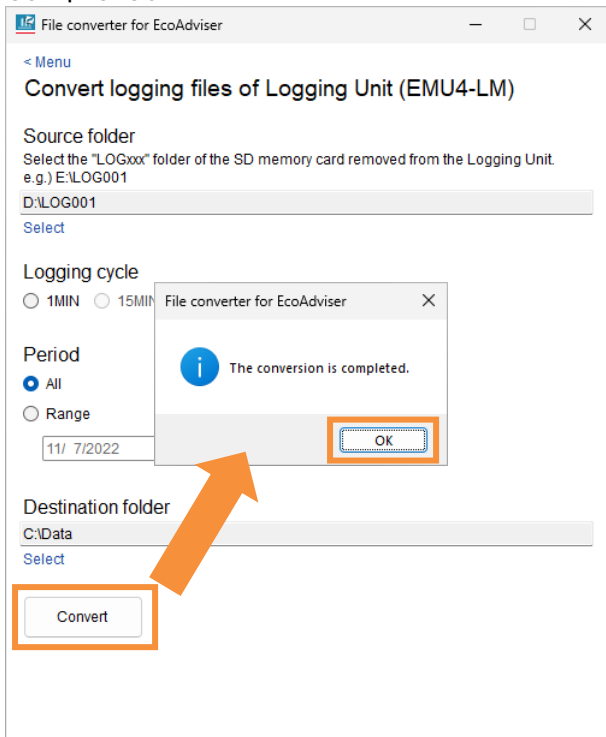
Item	Settings
Source folder	Select the “LOGxxx” (xxx is the logging ID of the Logging Unit) folder on the SD memory card removed from the Logging Unit. Click [Select] and select a folder. You can also select by drag and drop a folder from Explorer.
Logging cycle	Select the logging cycle to be converted. You cannot select a logging cycle that does not exist in the source folder. Select “1MIN” when using the diagnosis function of EcoAdviser. Select “15MIN” / “30MIN” / “1HOUR” when using the analysis function of EcoAdviser.
Period	Select the period to convert. For range specification, select the start date and end date.
Destination folder	Select a folder to output converted files. This will be the “Collection Data folder path” when registering the collection source in EcoAdviser. Click [Select] and select a folder. You can also select by drag and drop a folder from Explorer.

## 5 Convert the logging files of the Logging Unit

■ Example of source folder (when D drive is SD memory card drive and logging ID is 1)

D:\	SD memory card drive
LOG001\	Select this folder
1HOUR\	Logging cycle folder (1 Hour)
Hyymmdd.csv	Logging file
:	
1MIN\	Logging cycle folder (1 Min.)
yymm\	
01Mdd.csv	Logging file
:	
15MIN\	Logging cycle folder (15 Min.)
yymm\	
15Mdd.csv	Logging file
:	
30MIN\	Logging cycle folder (30 Min.)
yymm\	
30Mdd.csv	Logging file
:	

3. Click the [convert] button. The completion message will appear when the conversion is completed.



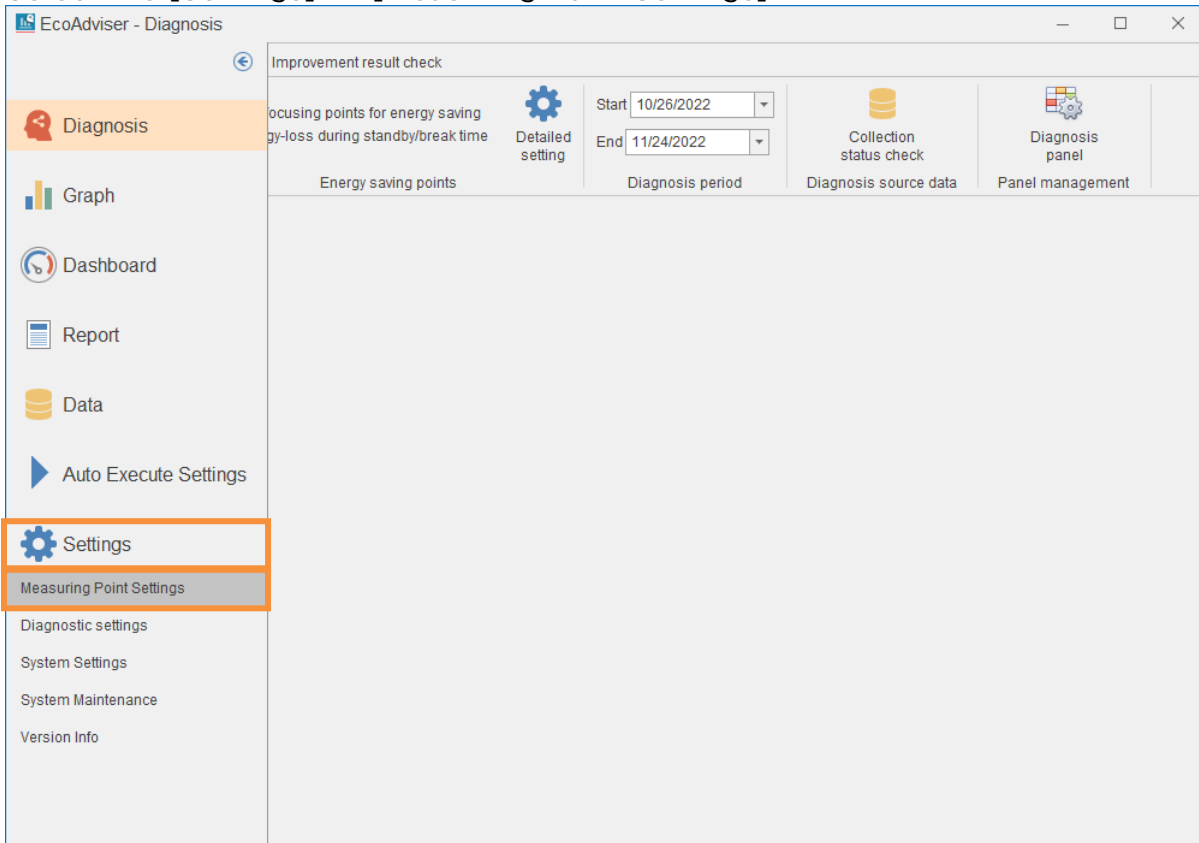
### Cancel the conversion

The progress will be displayed during the conversion. If you want to cancel, click [Cancel].

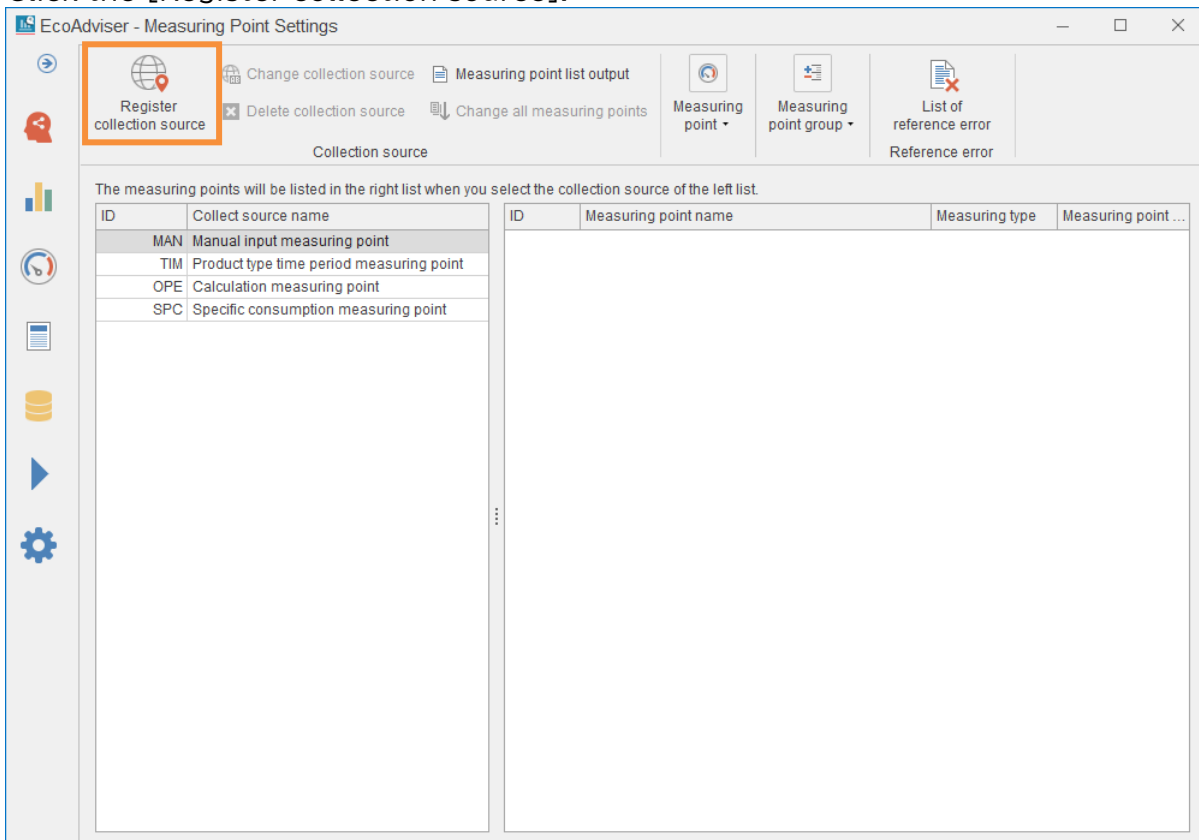


### 5.3 Register “Collection source” with EcoAdviser

1. Select the [Settings] ⇒ [Measuring Point Settings].



2. Click the [Register collection source].





## 5 Convert the logging files of the Logging Unit

### 3. Set each item and click the [Next] button.

Register Collection source

Register Collection source      Register Measuring point

**1. Set a ID and Name.**

Collection source ID: (Range:1-20)  
1

Collection source Name: (Maximum 30 letters)  
A-1

**2. Set Collection source Type.**

Collection source Type:  
Edgecross

**3. Set necessary information.**

Capture by Edgecross historical data interface.(csv format)

Collection Data folder path:  
C:\Data

File encoding:  
UTF-8

File name prefix:  
LOG

Time format:

Integration:  
Difference

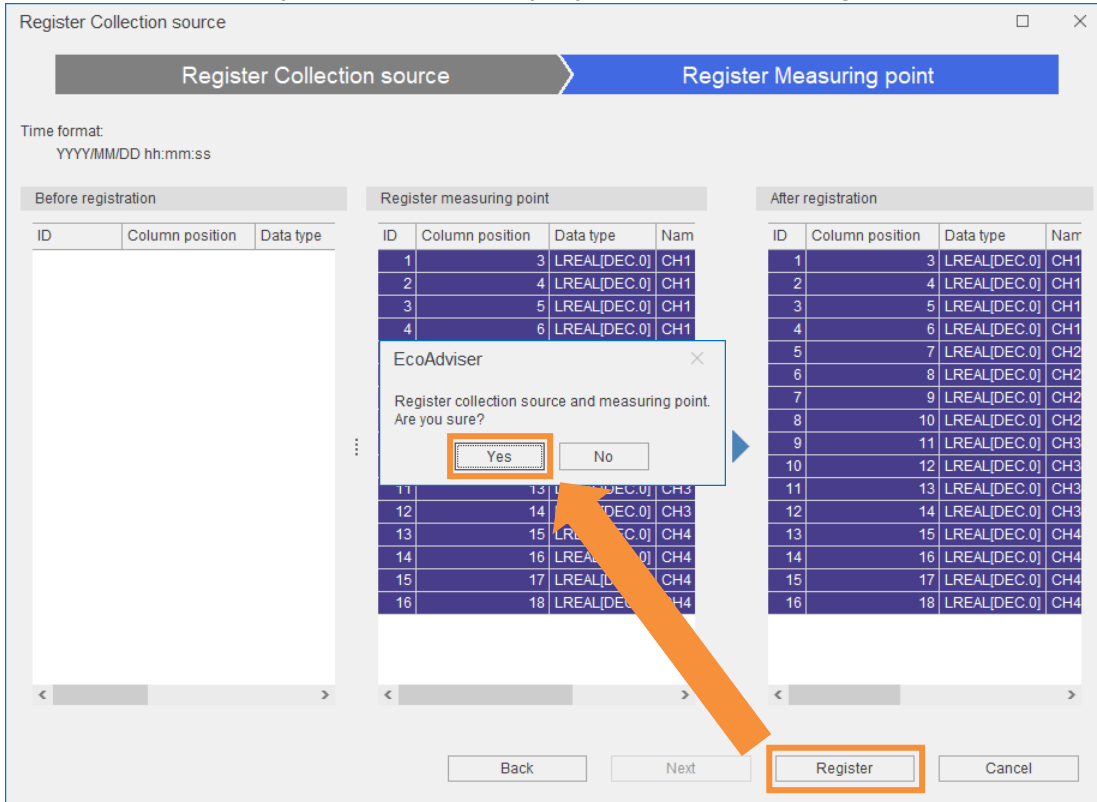
Data file for measuring point registration:  
C:\Data\DATATYPE\LOG\_DATATYPE.csv

Back      Next      Register      Cancel

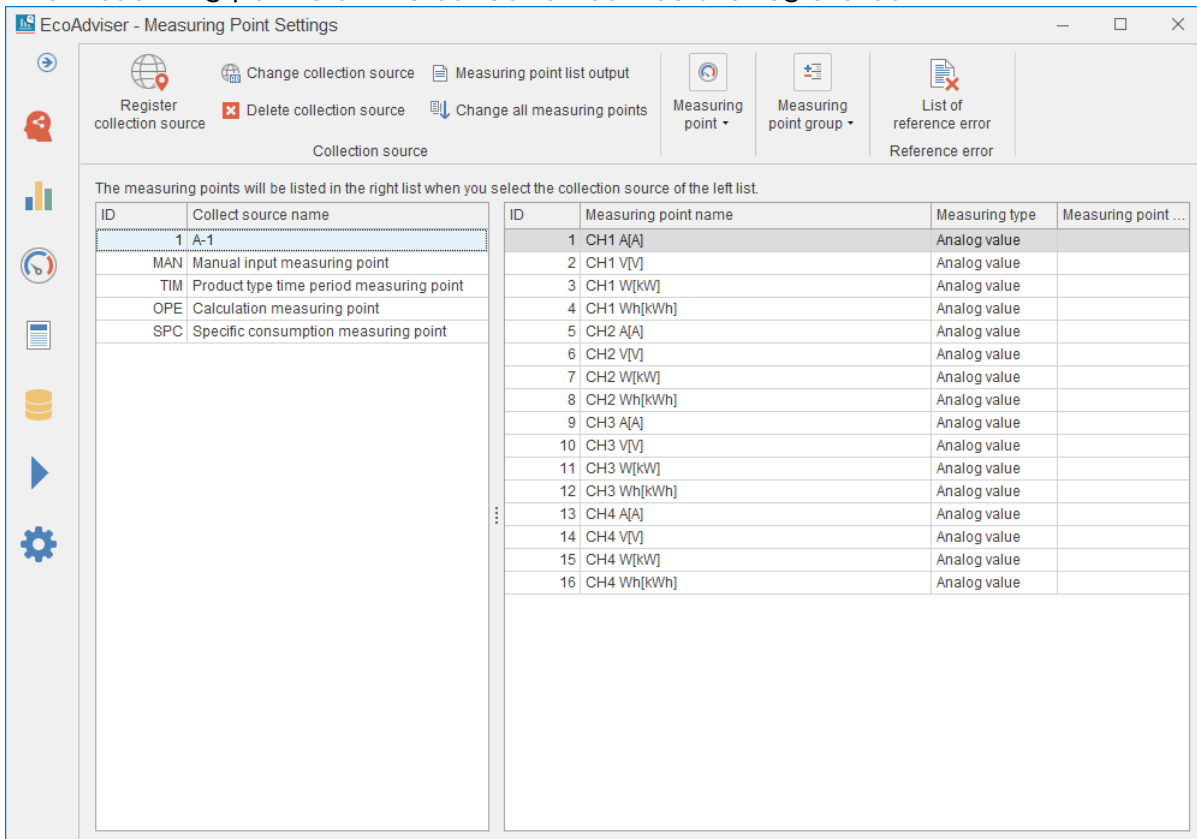
Item	Settings
Collection source ID	Enter any ID.
Collection source Name	Enter any name.
Collection source Type	Select “Edgecross”.
Collection Data folder path	Select the destination folder of the File converter.
File encoding	Select “UTF-8”.
File name prefix	Enter “LOG”.
Integration	Select “Difference”.
Data file for measuring point registration	Automatically set from [Collection Data folder path] and [File name prefix].

## 5 Convert the logging files of the Logging Unit

4. The measurement points will be displayed. Click the [Register] button.

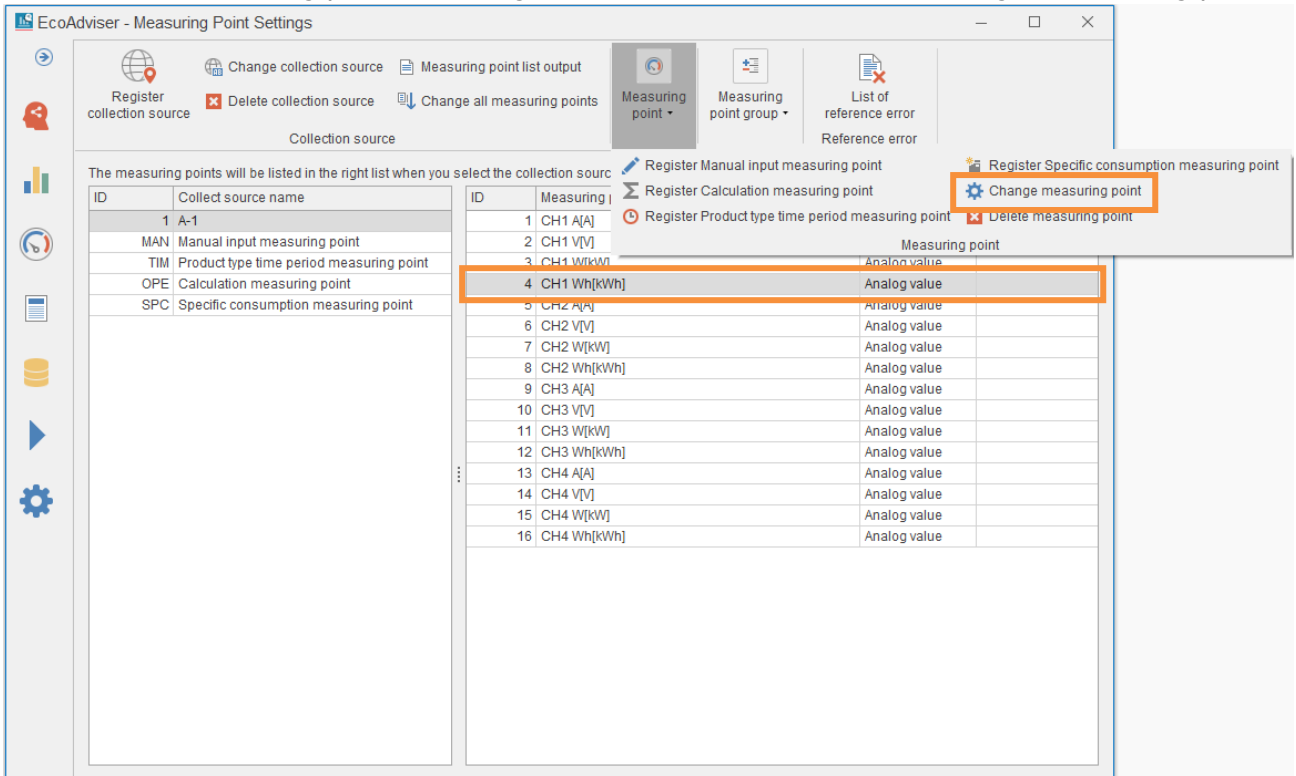


5. The measuring points of the collection source are registered.

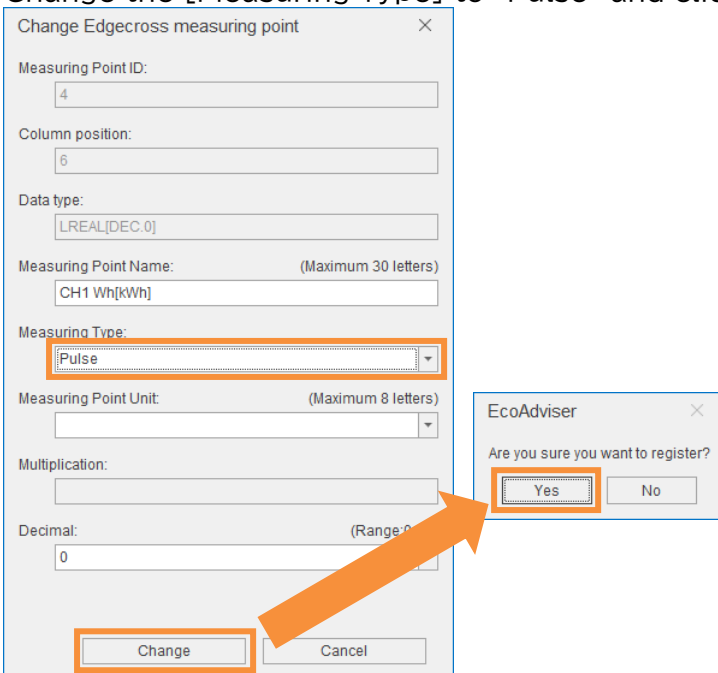


## 5 Convert the logging files of the Logging Unit

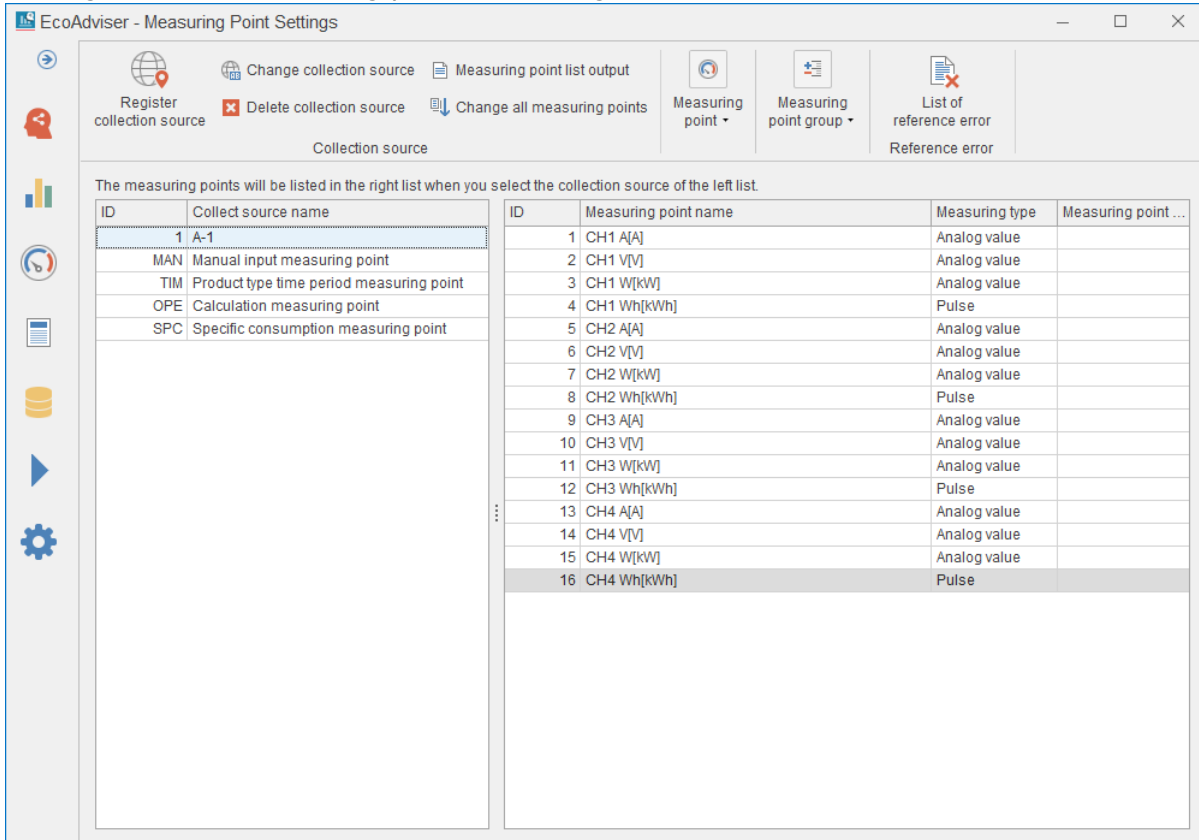
6. Since the [Measuring Type] is registered as "Analog value", change the [Measuring Type] of the integrated value to "Pulse".  
Select the measuring point of integrated value and click the [Change measuring point].



7. Change the [Measuring Type] to "Pulse" and click the [Change] button.



8. Change all the measuring points of integrated value.



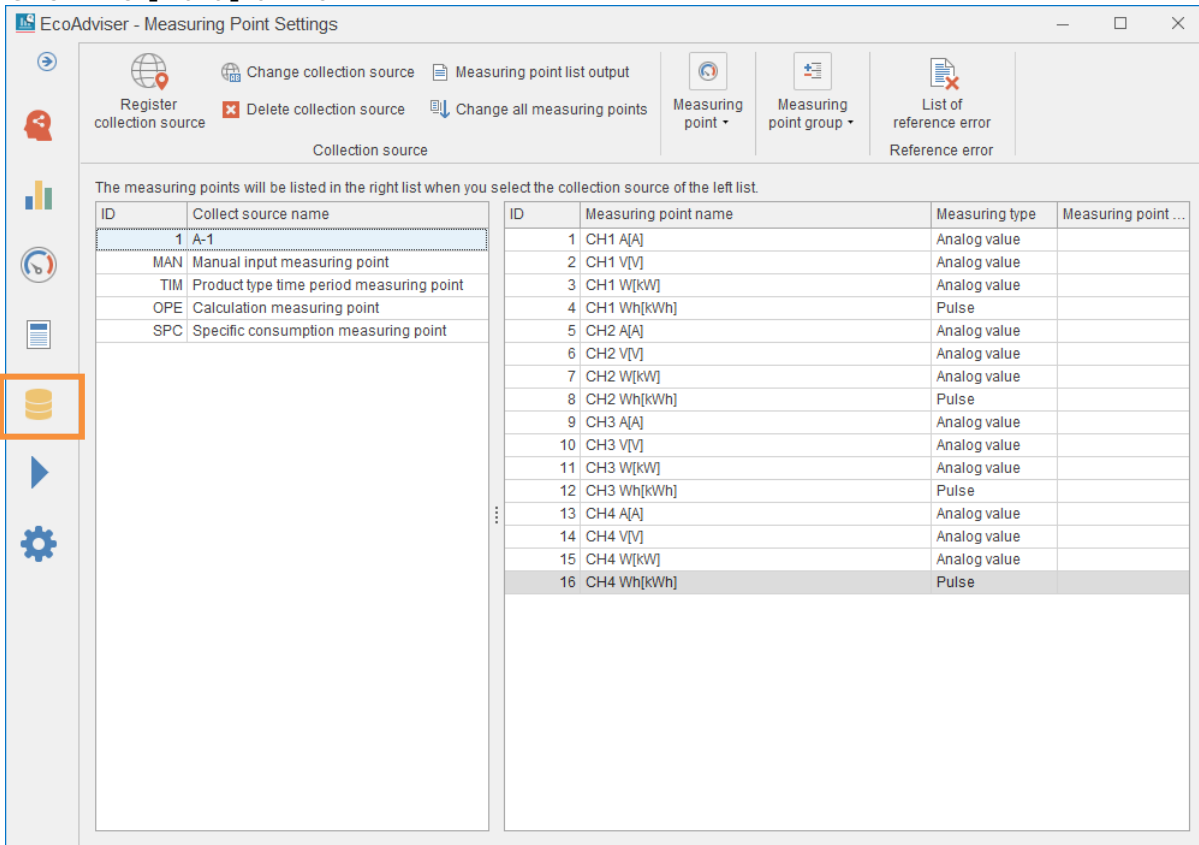
**Change all the measuring points**

If there are many measuring points of integrated value, you can change them all at once by following steps below.

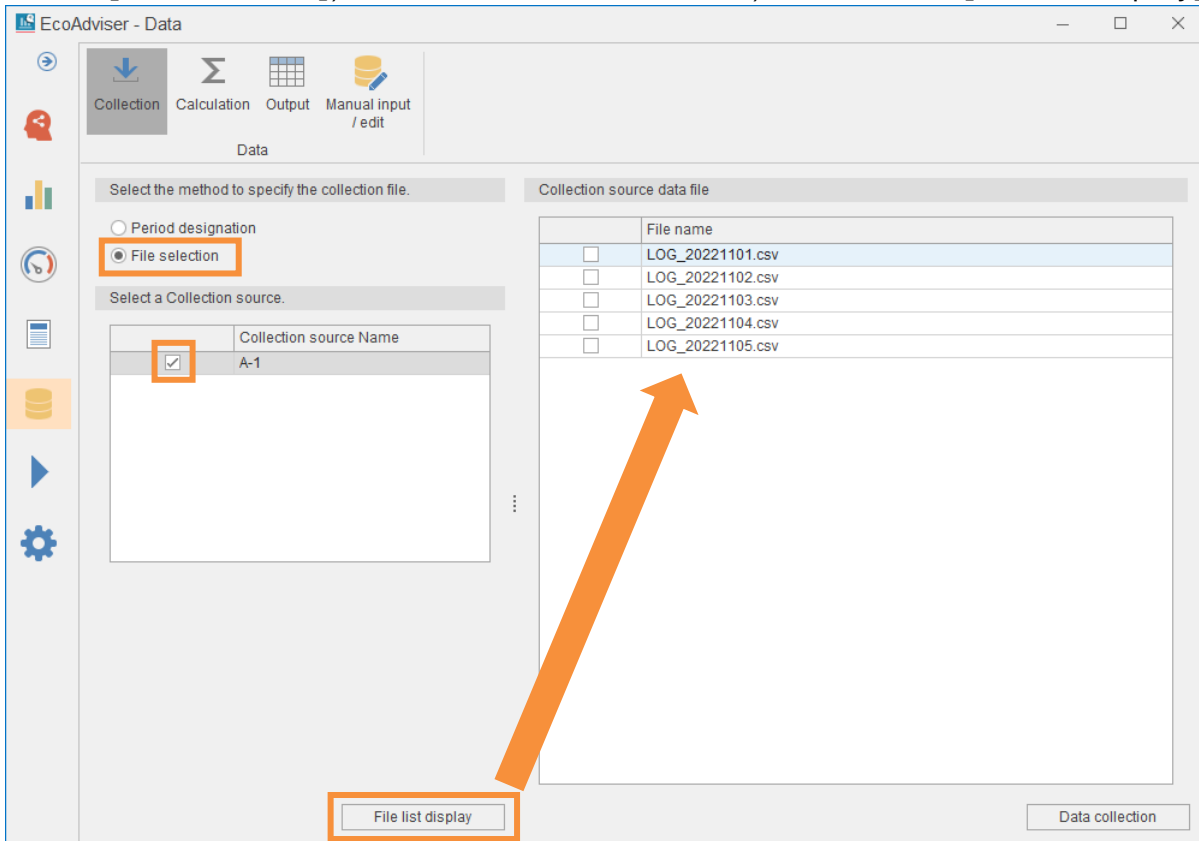
- 1) Click the [Measuring point list output] to output the measuring point list file.
- 2) Open the measuring point list file and change the [Measuring Type] from 2 (Analog value) to 1 (Pulse) for the measuring point of integrated value.
- 3) Save the measuring point list file.
- 4) Click the [Change all measuring points] and specify the edited measuring point list file.

### 5.4 Collect data with EcoAdviser

1. Click the [Data] button.

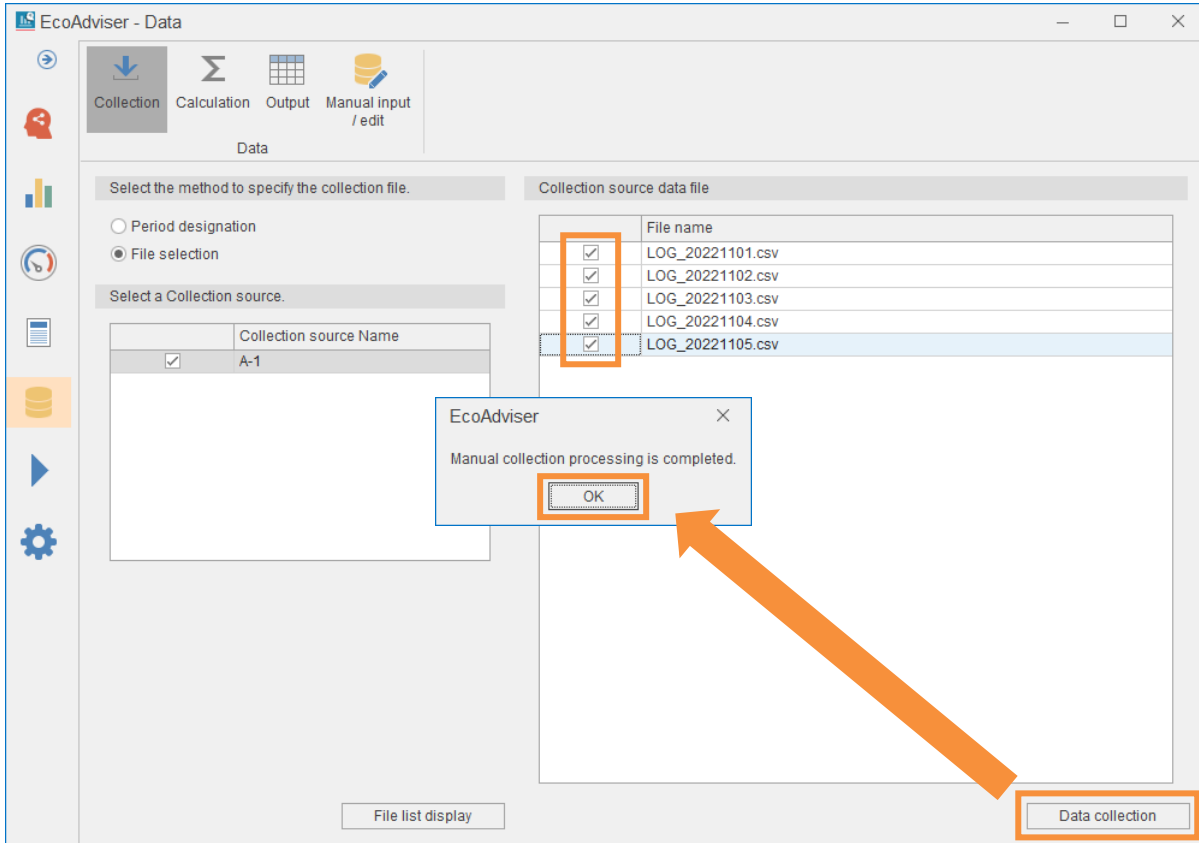


2. Select [File selection], check the collection source, and click the [File list display] button.



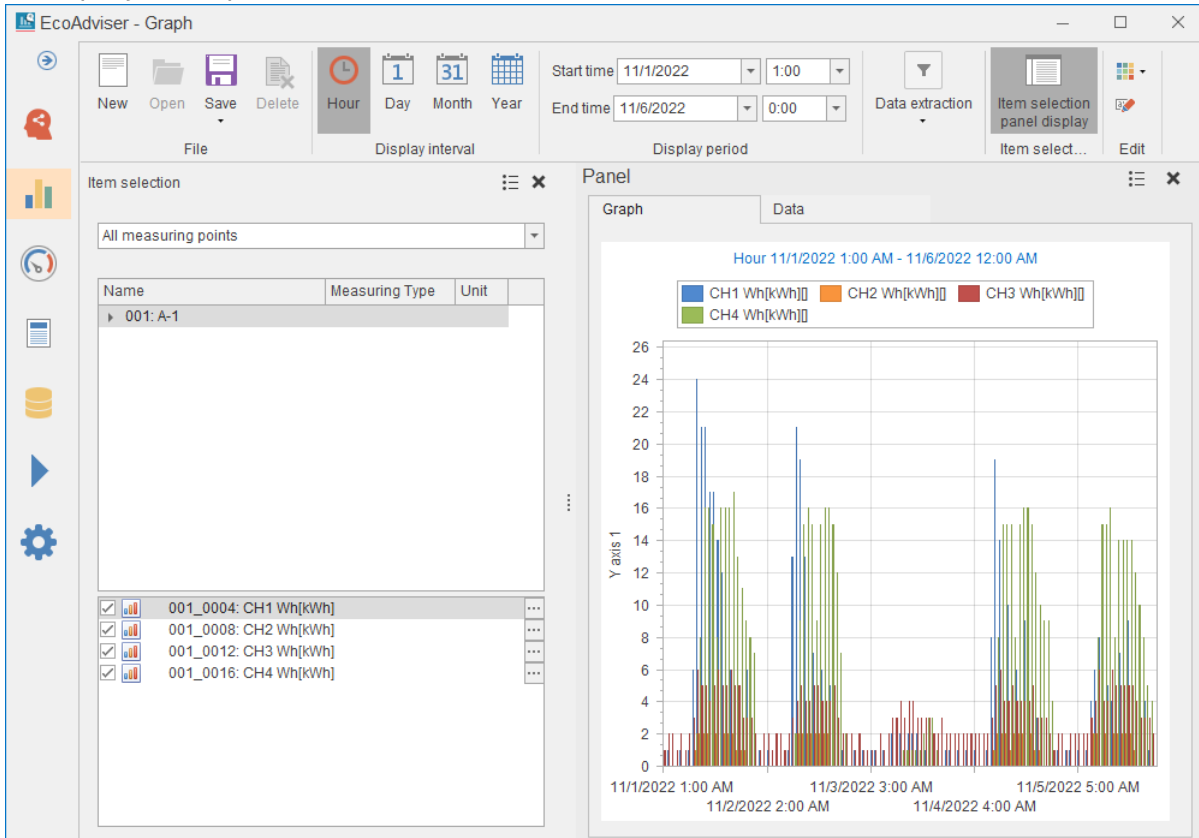
## 5 Convert the logging files of the Logging Unit

3. Check the files to collect. Click the [Data collection] button to collect data.



4. View the collected data in graphs and so on.

■ Display example of a time series chart.



## 6 Convert the logging files of the Data Acquisition Software

This section describes the procedure from converting the logging files of the Data Acquisition Software to collecting it with EcoAdviser.

### 6.1 Prepare the logging files

When converting on a computer other than the Data Acquisition Software, copy the entire “LogData” folder in the installation folder of the Data Acquisition Software.

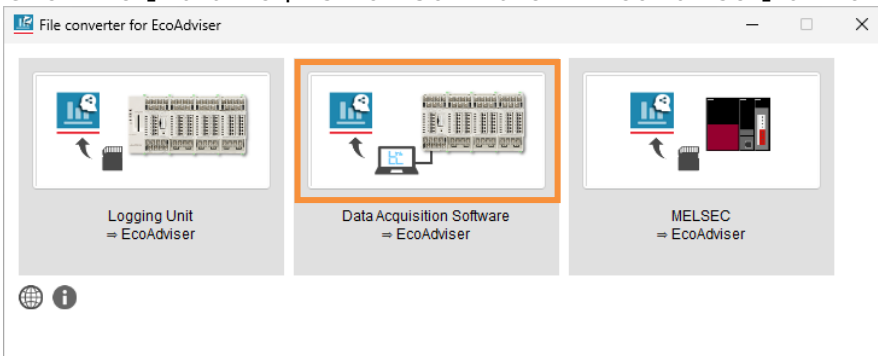
#### About the logging cycle

When using the diagnostic function of EcoAdviser, one minute data is required for the logging cycle.

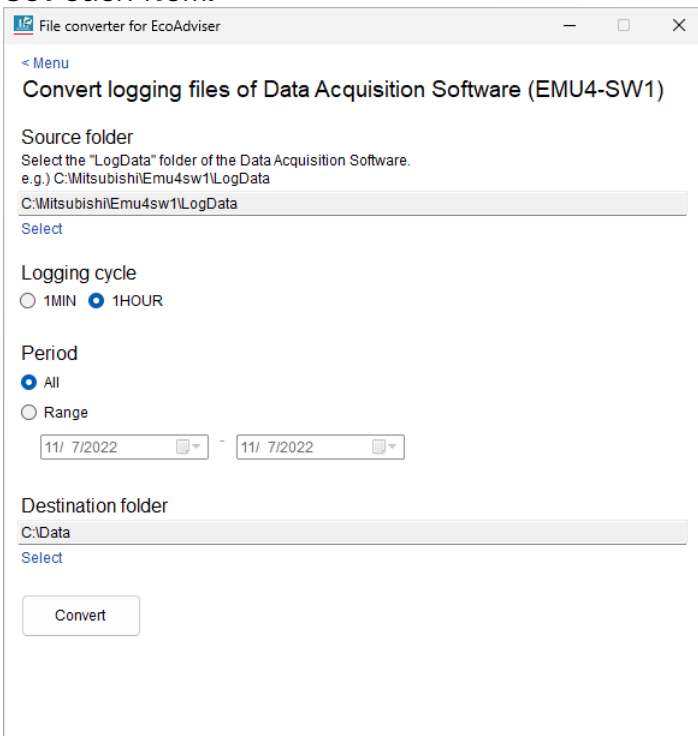
When using the analysis function of EcoAdviser (graphs, reports), one minute or one hour data is required for the logging cycle.

### 6.2 Convert the logging files

1. Click the [Data Acquisition Software ⇒ EcoAdviser] button.



2. Set each item.



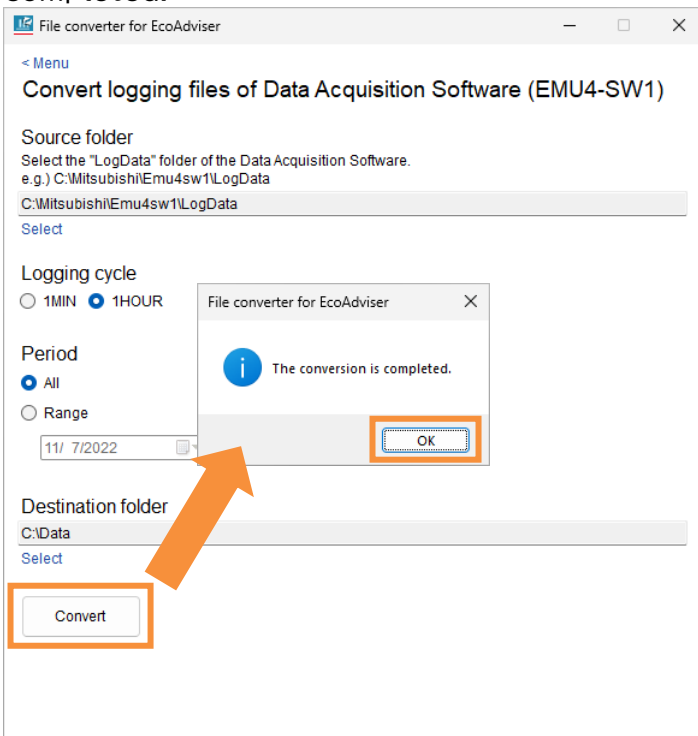
## 6 Convert the logging files of the Data Acquisition Software

Item	Settings
Source folder	Select the “LogData” folder of the Data Acquisition Software. Click [Select] and select a folder. You can also select by drag and drop a folder from Explorer.
Logging cycle	Select the logging cycle to be converted. You cannot select a logging cycle that does not exist in the source folder. Select “1MIN” when using the diagnosis function of EcoAdviser.
Period	Select the period to convert. For range specification, select the start date and end date.
Destination folder	Select a folder to output converted files. This will be the “Collection Data folder path” when registering the collection source in EcoAdviser. Click [Select] and select a folder. You can also select by drag and drop a folder from Explorer.

■ Example of source folder (When the Data Acquisition Software is installed in the default location)

C:\		
Mitsubishi\		
Emu4sw1\		Data Acquisition Software installation folder
LogData ←		Select this folder
1HOUR\		Logging cycle folder (1 Hour)
Hyyymmdd.csv		Logging file
:		
1MIN\		Logging cycle folder (1 Min.)
01Myyymmdd.csv		Logging file
:		

3. Click the [convert] button. The completion message will appear when the conversion is completed.





## 6 Convert the logging files of the Data Acquisition Software

---

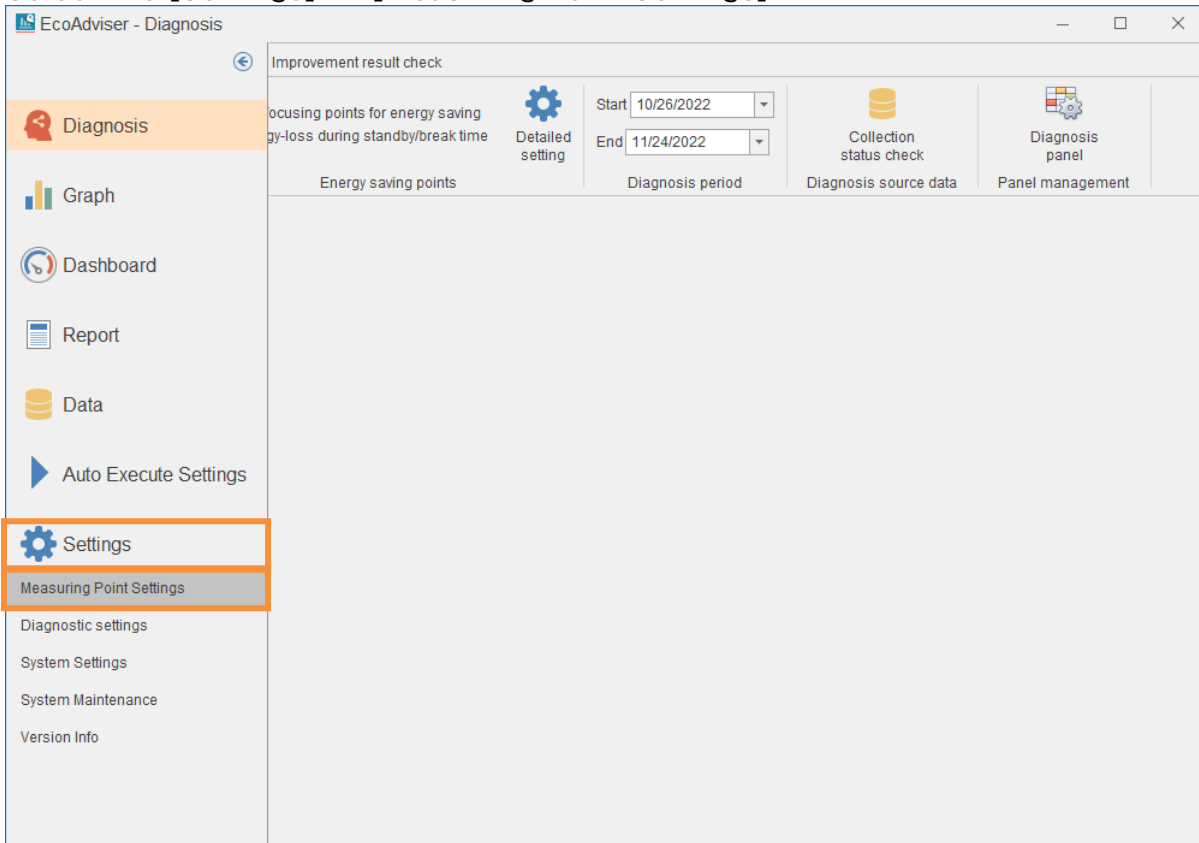
### Cancel the conversion

The progress will be displayed during the conversion. If you want to cancel, click [Cancel].

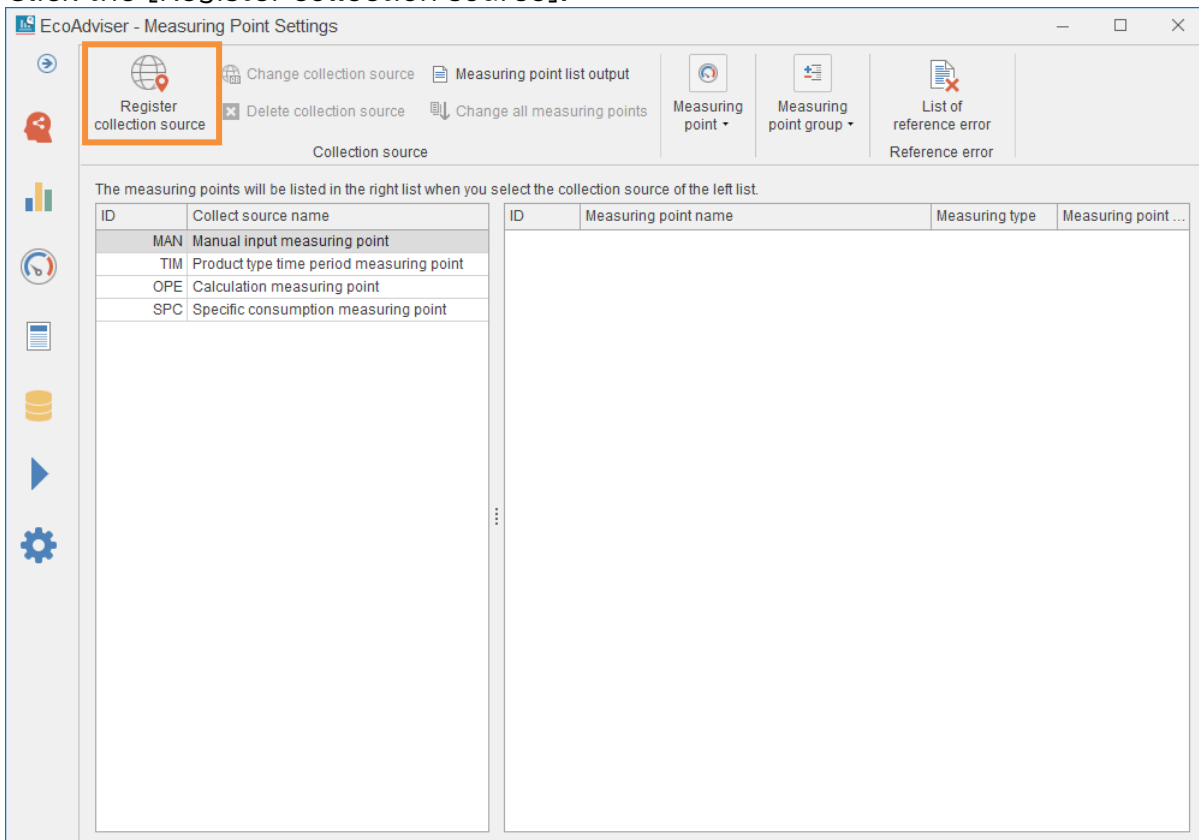


### 6.3 Register “Collection source” with EcoAdviser

1. Select the [Settings] ⇒ [Measuring Point Settings].



2. Click the [Register collection source].



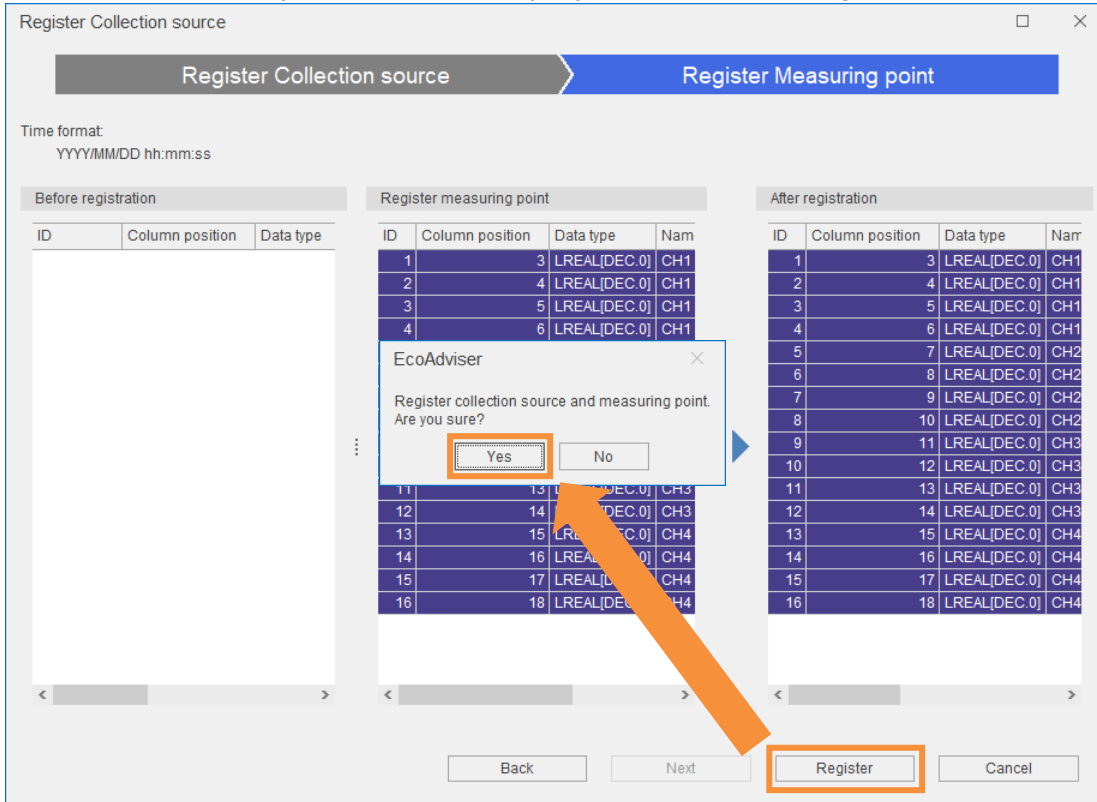
## 6 Convert the logging files of the Data Acquisition Software

### 3. Set each item and click the [Next] button.

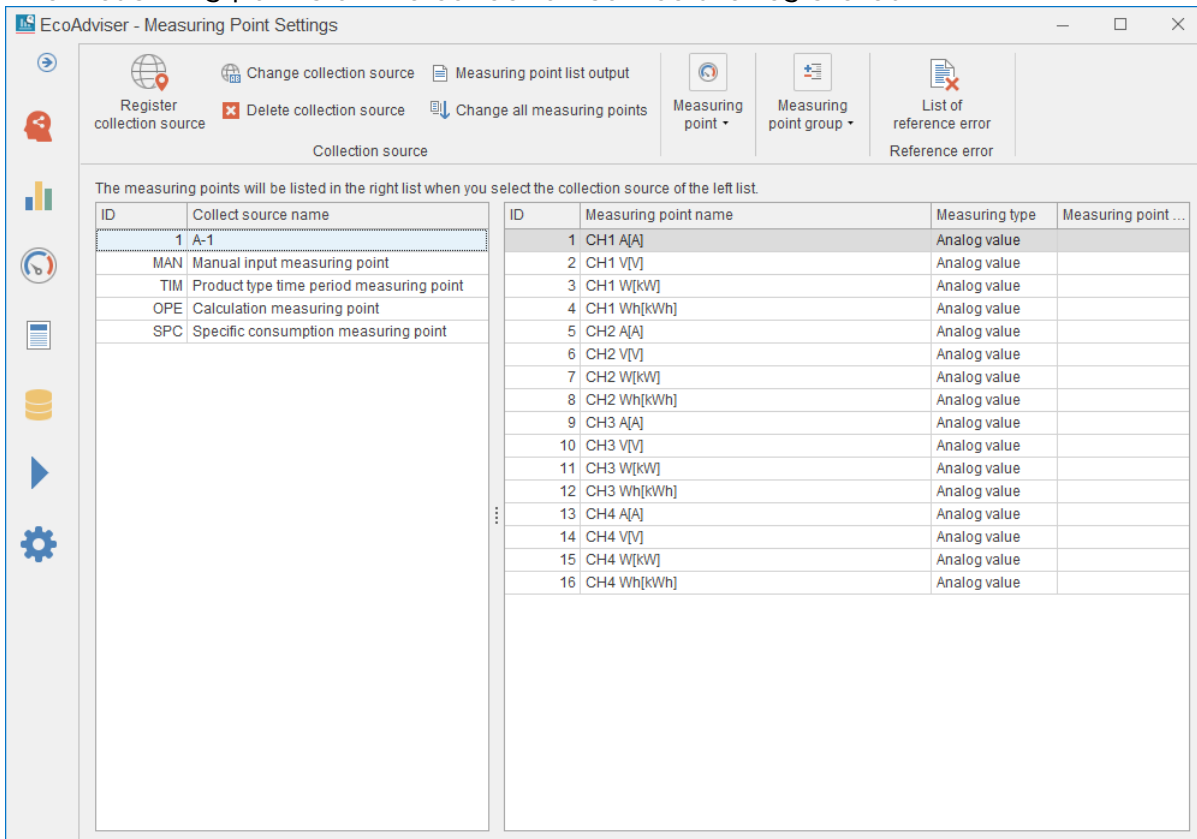
Item	Settings
Collection source ID	Enter any ID.
Collection source Name	Enter any name.
Collection source Type	Select “Edgecross”.
Collection Data folder path	Select the destination folder of the File converter.
File encoding	Select “UTF-8”.
File name prefix	Enter “LOG”.
Integration	Select “Indicated”.
Data file for measuring point registration	Automatically set from [Collection Data folder path] and [File name prefix].

## 6 Convert the logging files of the Data Acquisition Software

4. The measurement points will be displayed. Click the [Register] button.

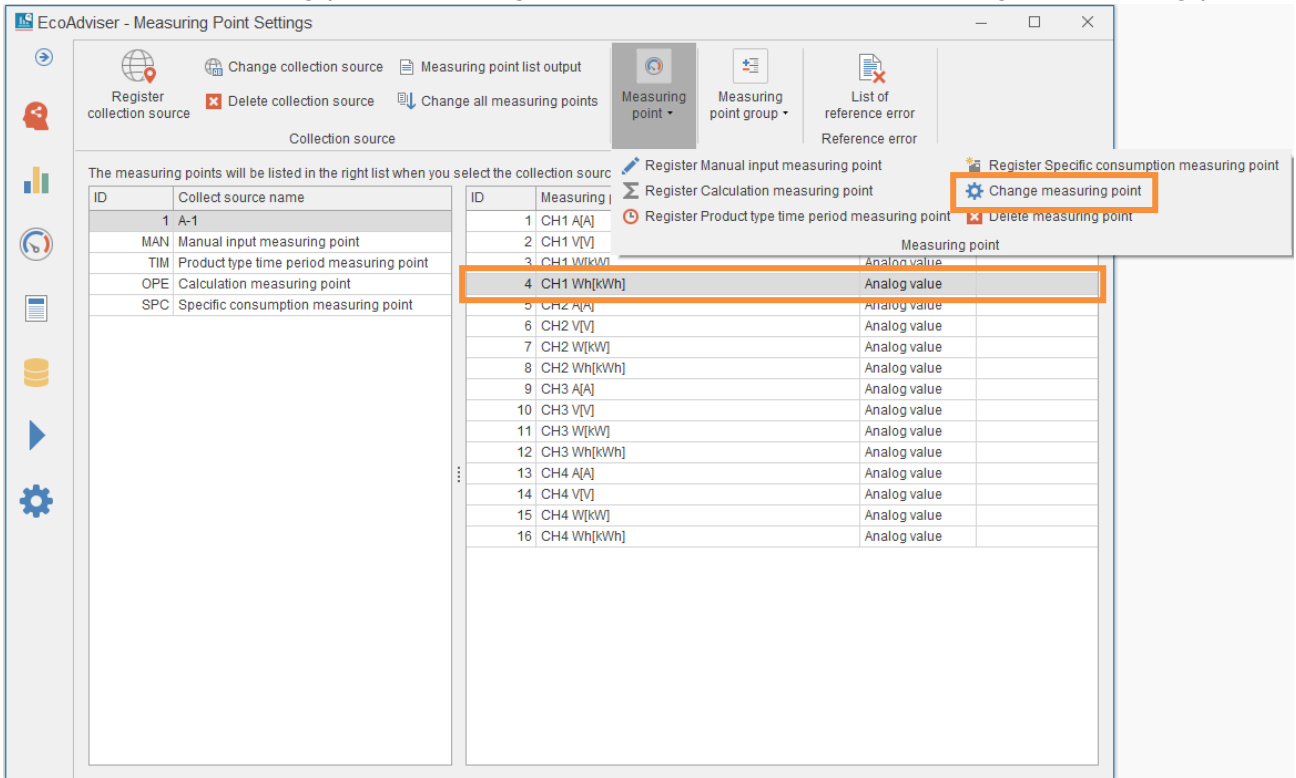


5. The measuring points of the collection source are registered.

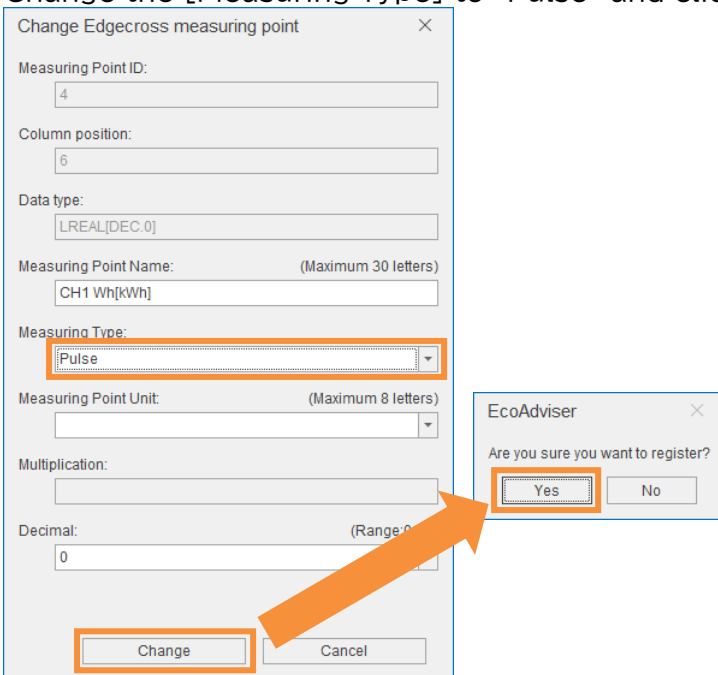


## 6 Convert the logging files of the Data Acquisition Software

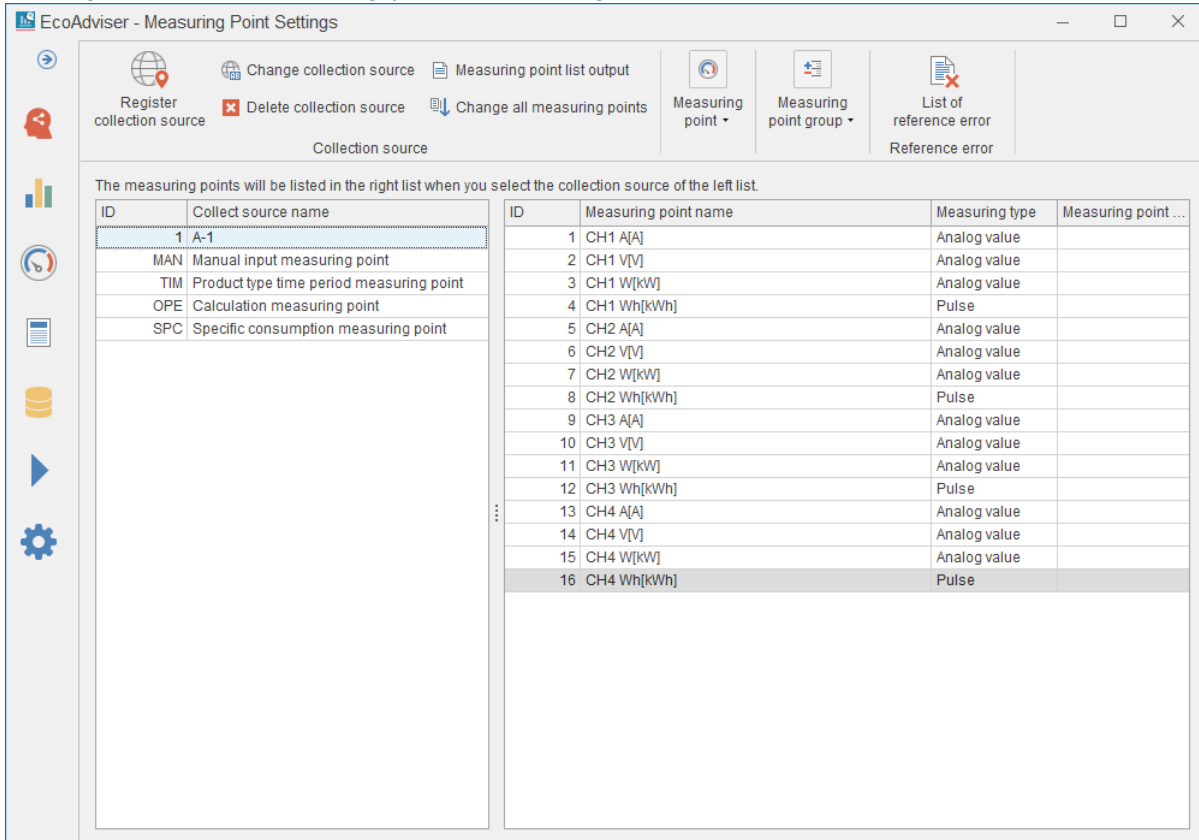
6. Since the [Measuring Type] is registered as "Analog value", change the [Measuring Type] of the integrated value to "Pulse".  
Select the measuring point of integrated value and click the [Change measuring point].



7. Change the [Measuring Type] to "Pulse" and click the [Change] button.



### 8. Change all the measuring points of integrated value.



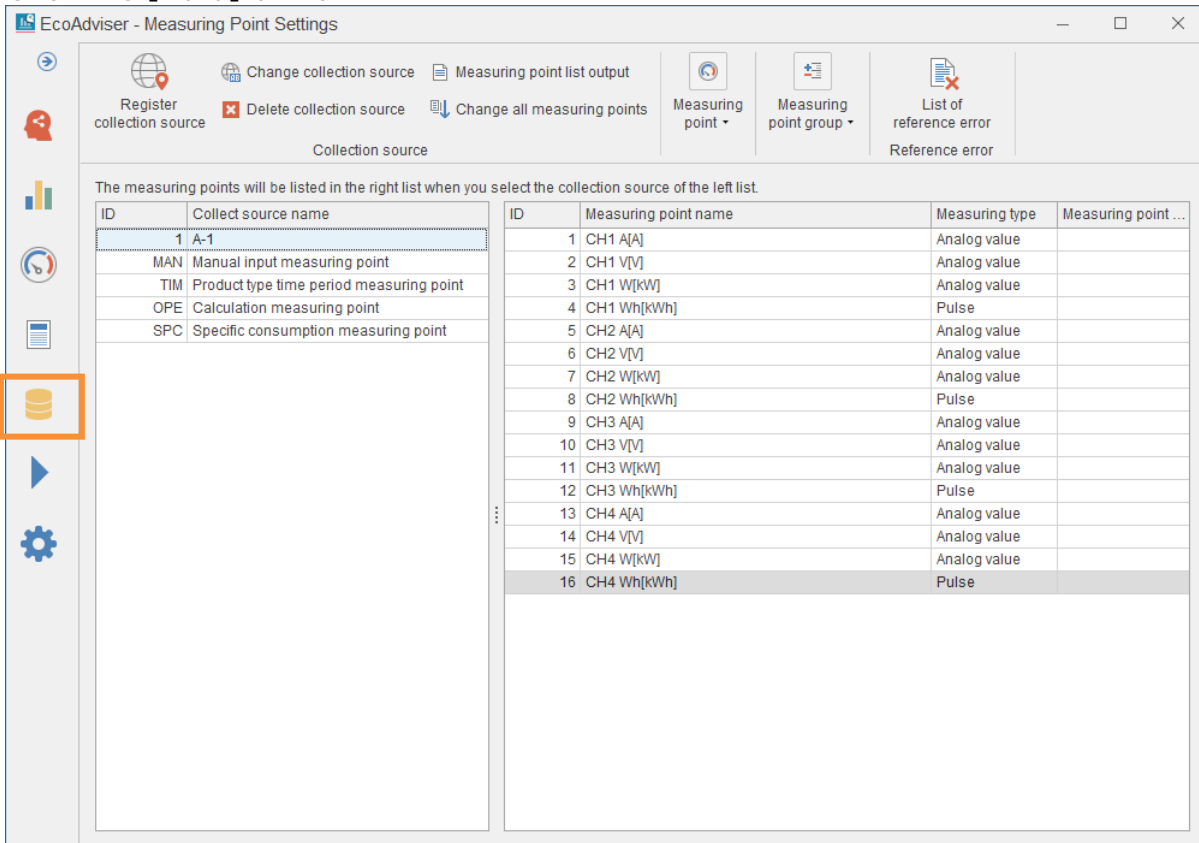
#### Change all the measuring points

If there are many measuring points of integrated value, you can change them all at once by following steps below.

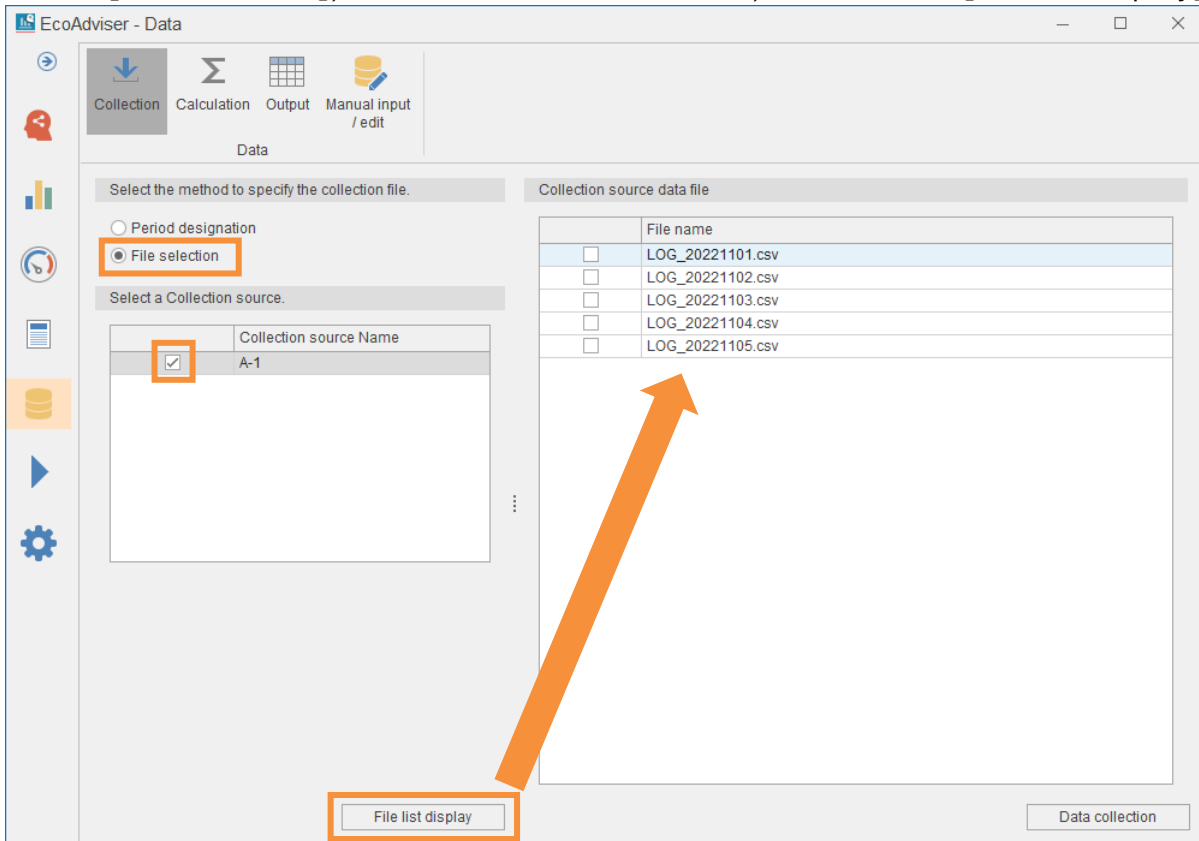
- 1) Click the [Measuring point list output] to output the measuring point list file.
- 2) Open the measuring point list file and change the [Measuring Type] from 2 (Analog value) to 1 (Pulse) for the measuring point of integrated value.
- 3) Save the measuring point list file.
- 4) Click the [Change all measuring points] and specify the edited measuring point list file.

### 6.4 Collect data with EcoAdviser

1. Click the [Data] button.

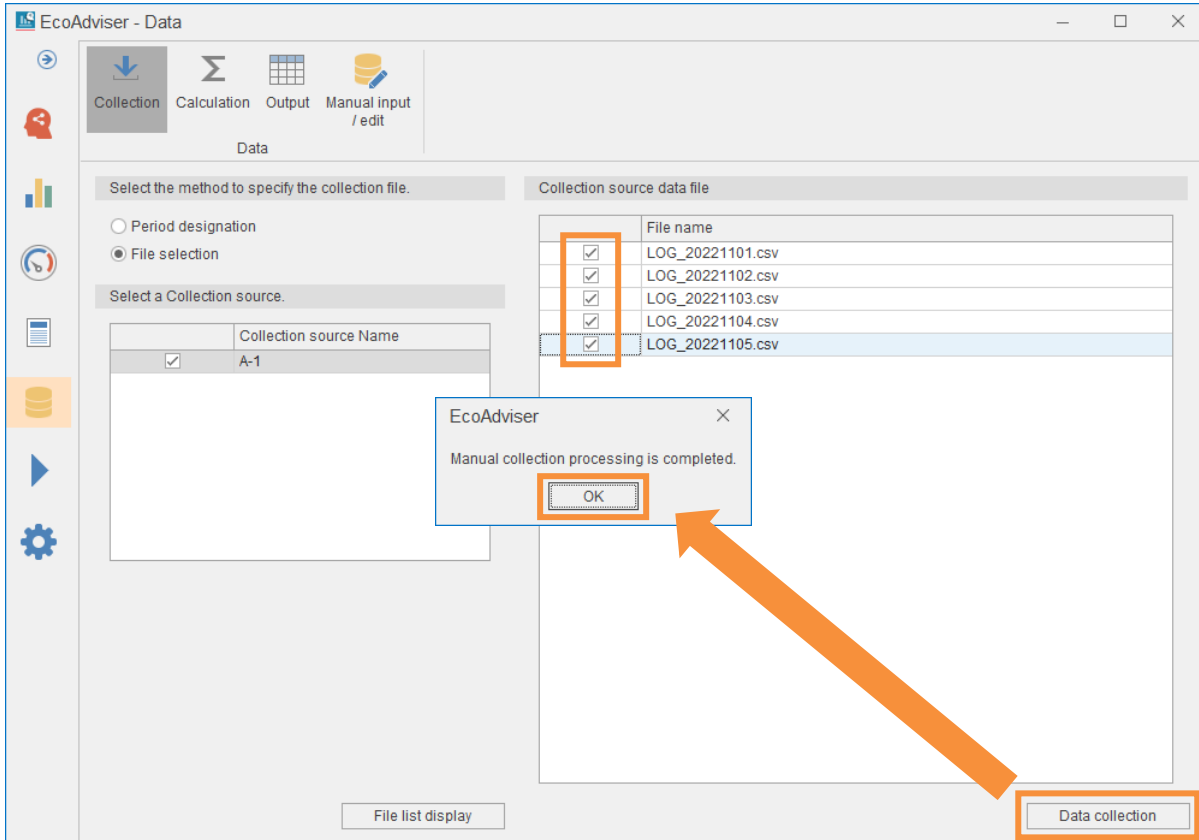


2. Select [File selection], check the collection source, and click the [File list display] button.

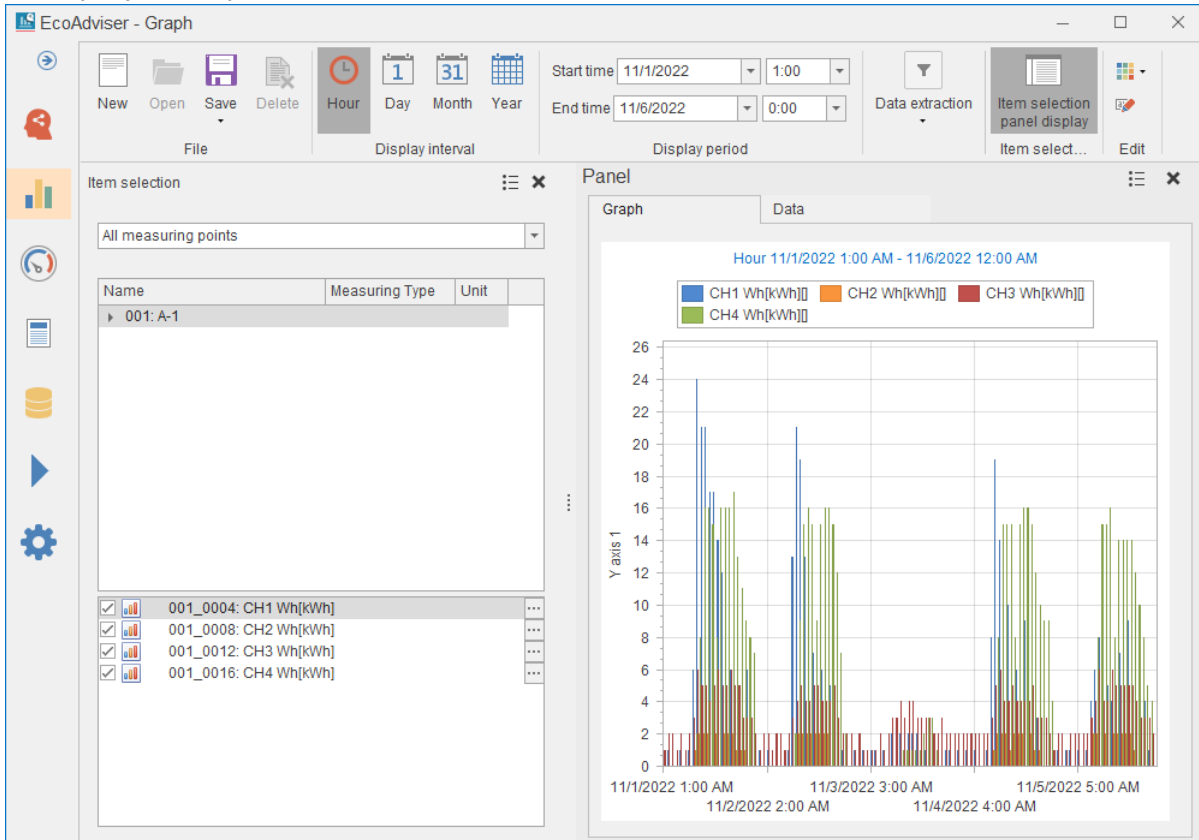


## 6 Convert the logging files of the Data Acquisition Software

3. Check the files to collect. Click the [Data collection] button to collect data.



4. View the collected data in graphs and so on.  
■ Display example of a time series chart.





## 7 Convert the logging files of the MELSEC

This section describes the procedure from converting the logging files of the MELSEC to collecting it with EcoAdviser.

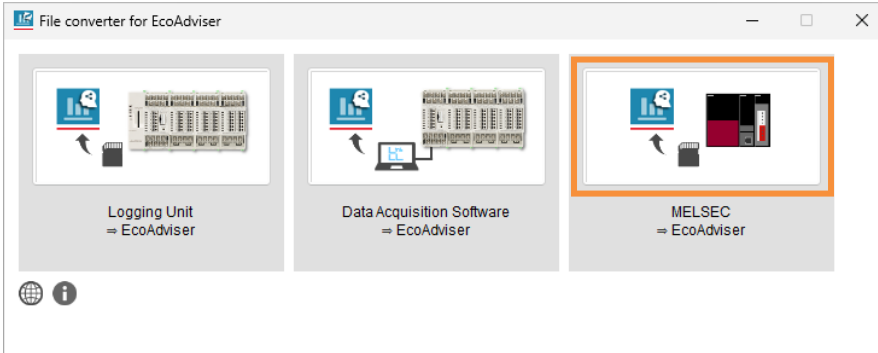
### 7.1 Prepare the logging files

Import the logging files of the MELSEC to your computer.

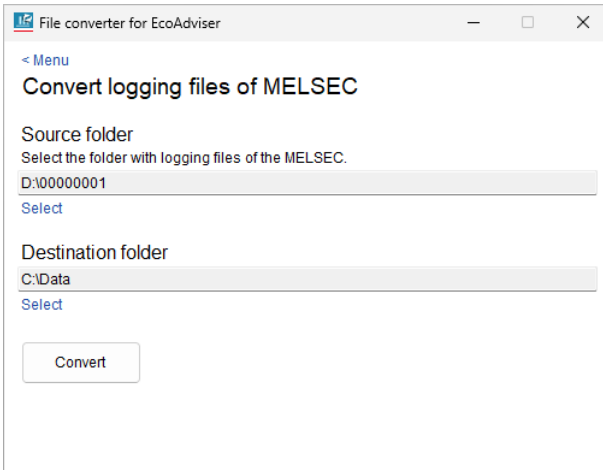
Please refer to the user's manual for the model you are using for how to import.

### 7.2 Convert the logging files

1. Click the [MELSEC ⇒ EcoAdviser] button.



2. Set each item.



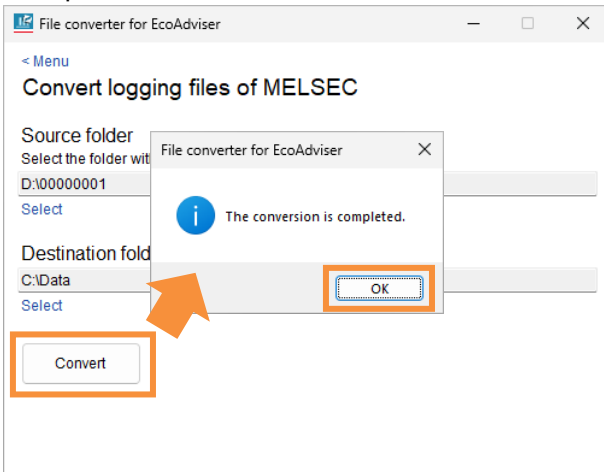
Item	Settings
Source folder	Select the folder with logging files of the MELSEC. Click [Select] and select a folder. You can also select by drag and drop a folder from Explorer.
Destination folder	Select a folder to output converted files. This will be the “Collection Data folder path” when registering the collection source in EcoAdviser. Click [Select] and select a folder. You can also select by drag and drop a folder from Explorer.

## 7 Convert the logging files of the MELSEC

■ Example of source folder (When the logging files are imported to the D:\00000001 folder)

D:\		
00000001\	←	Select this folder
00000001.csv		Logging file
00000002.csv		Logging file
00000003.csv		Logging file
:		

3. Click the [convert] button. The completion message will appear when the conversion is completed.



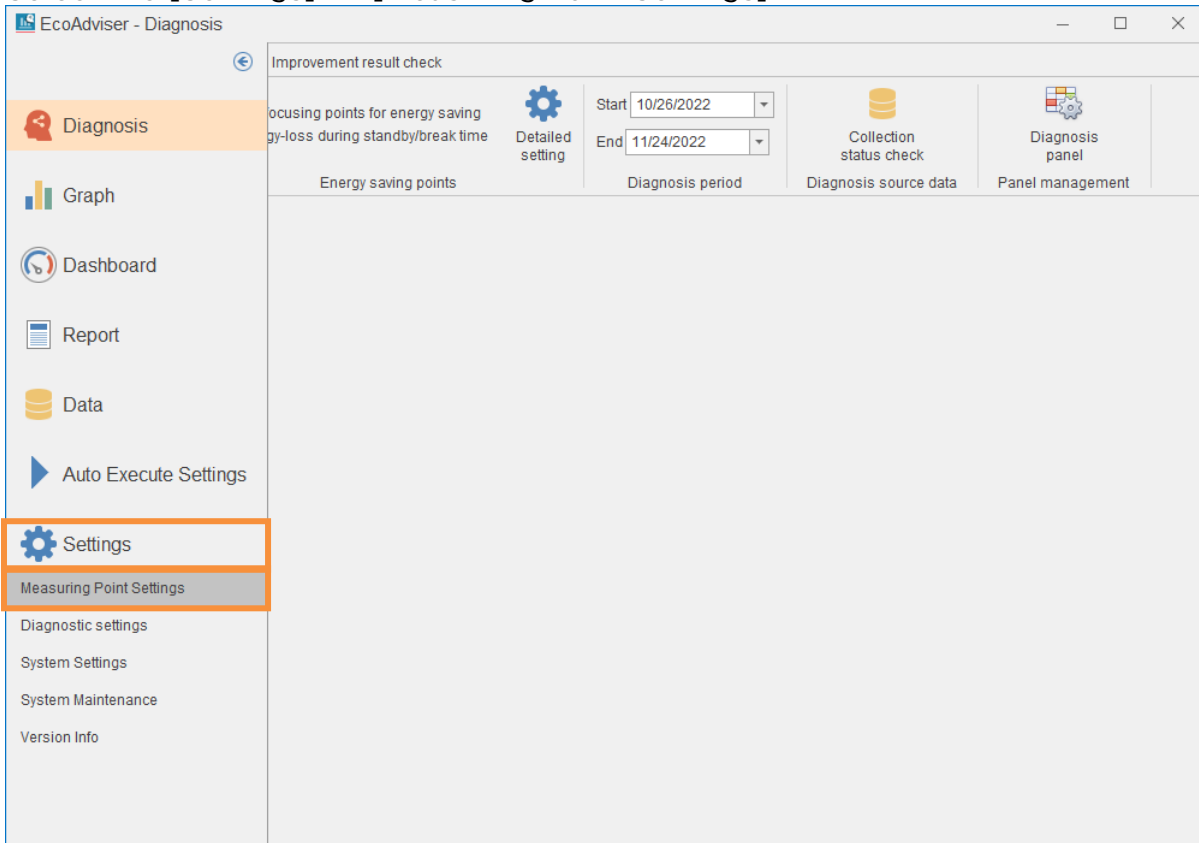
### Cancel the conversion

The progress will be displayed during the conversion. If you want to cancel, click [Cancel].

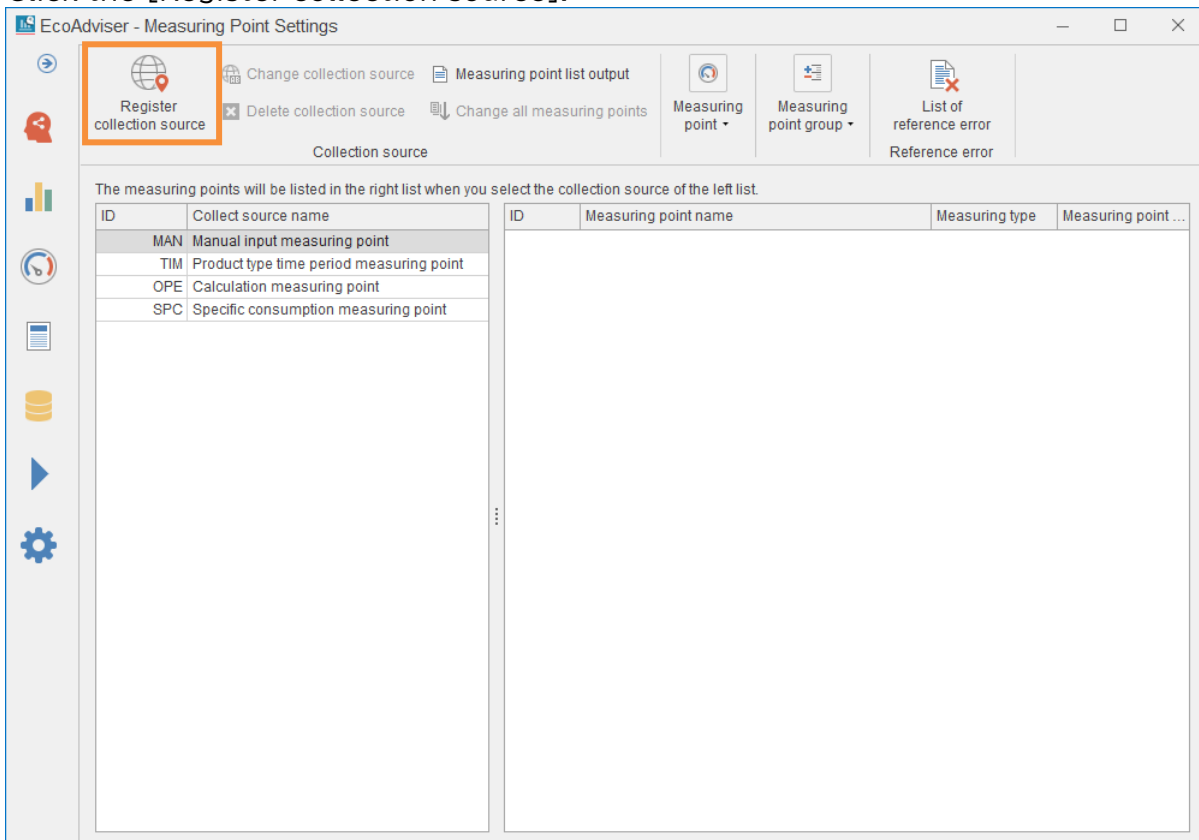


### 7.3 Register “Collection source” with EcoAdviser

1. Select the [Settings] ⇒ [Measuring Point Settings].



2. Click the [Register collection source].



## 7 Convert the logging files of the MELSEC

### 3. Set each item and click the [Next] button.

Register Collection source

Register Collection source    Register Measuring point

**1. Set a ID and Name.**

Collection source ID: (Range:1-20)  
1

Collection source Name: (Maximum 30 letters)  
A-1

**2. Set Collection source Type.**

Collection source Type:  
Edgecross

**3. Set necessary information.**

Capture by Edgecross historical data interface.(csv format)

Collection Data folder path:  
C:\Data

File encoding:  
UTF-8

File name prefix:  
LOG

Time format:

Integration:  
Indicated

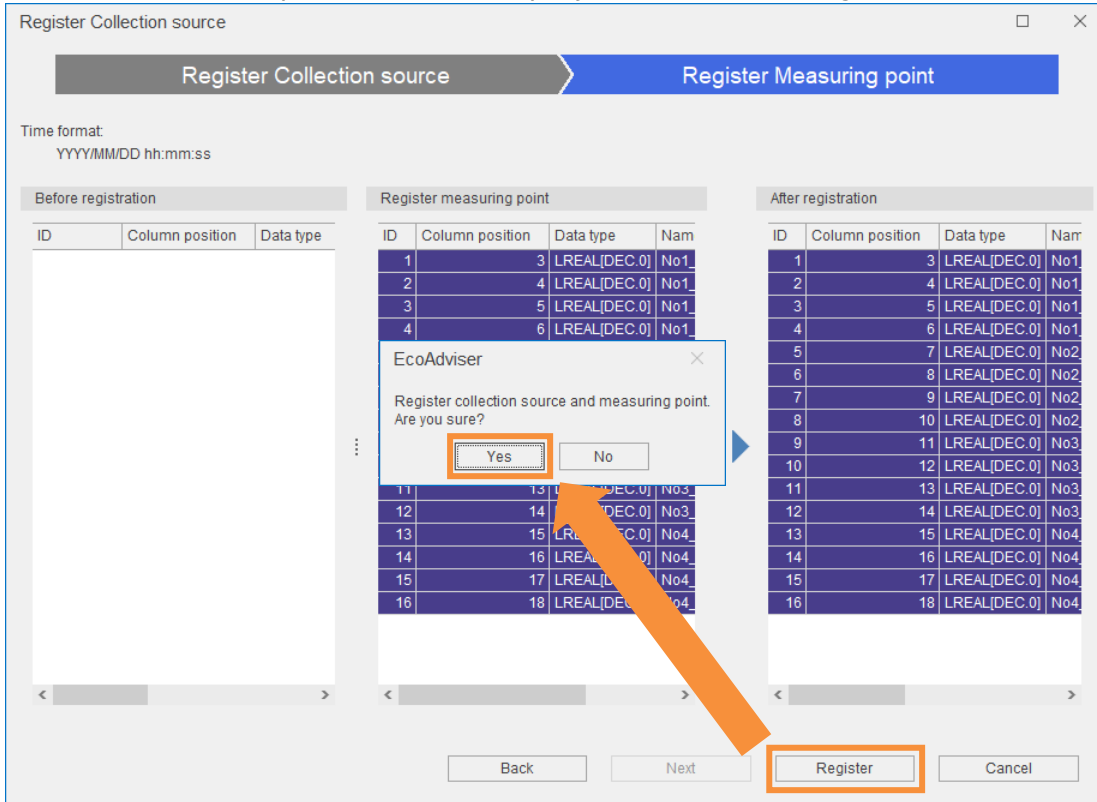
Data file for measuring point registration:  
C:\Data\DATATYPE\LOG\_DATATYPE.csv

Back    **Next**    Register    Cancel

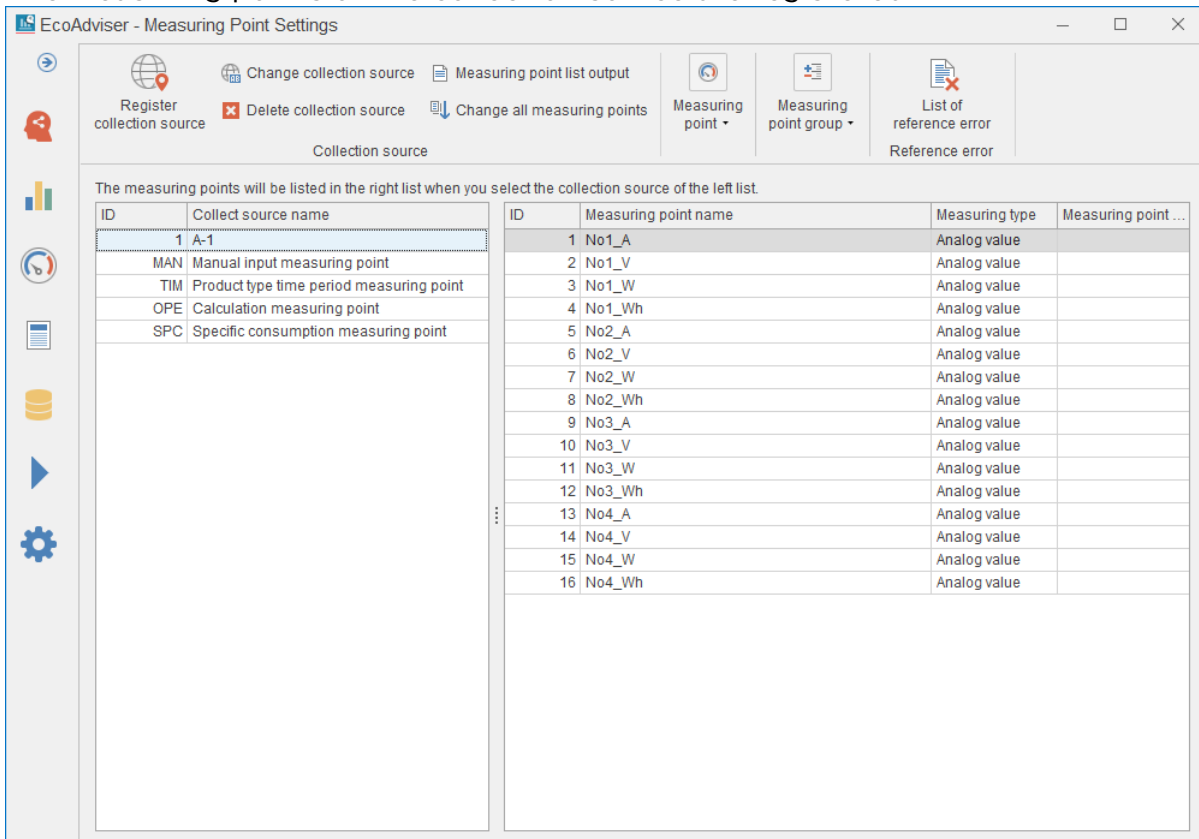
Item	Settings
Collection source ID	Enter any ID.
Collection source Name	Enter any name.
Collection source Type	Select "Edgecross".
Collection Data folder path	Select the destination folder of the File converter.
File encoding	Select "UTF-8".
File name prefix	Enter "LOG".
Integration	Select "Indicated".
Data file for measuring point registration	Automatically set from [Collection Data folder path] and [File name prefix].

## 7 Convert the logging files of the MELSEC

4. The measurement points will be displayed. Click the [Register] button.

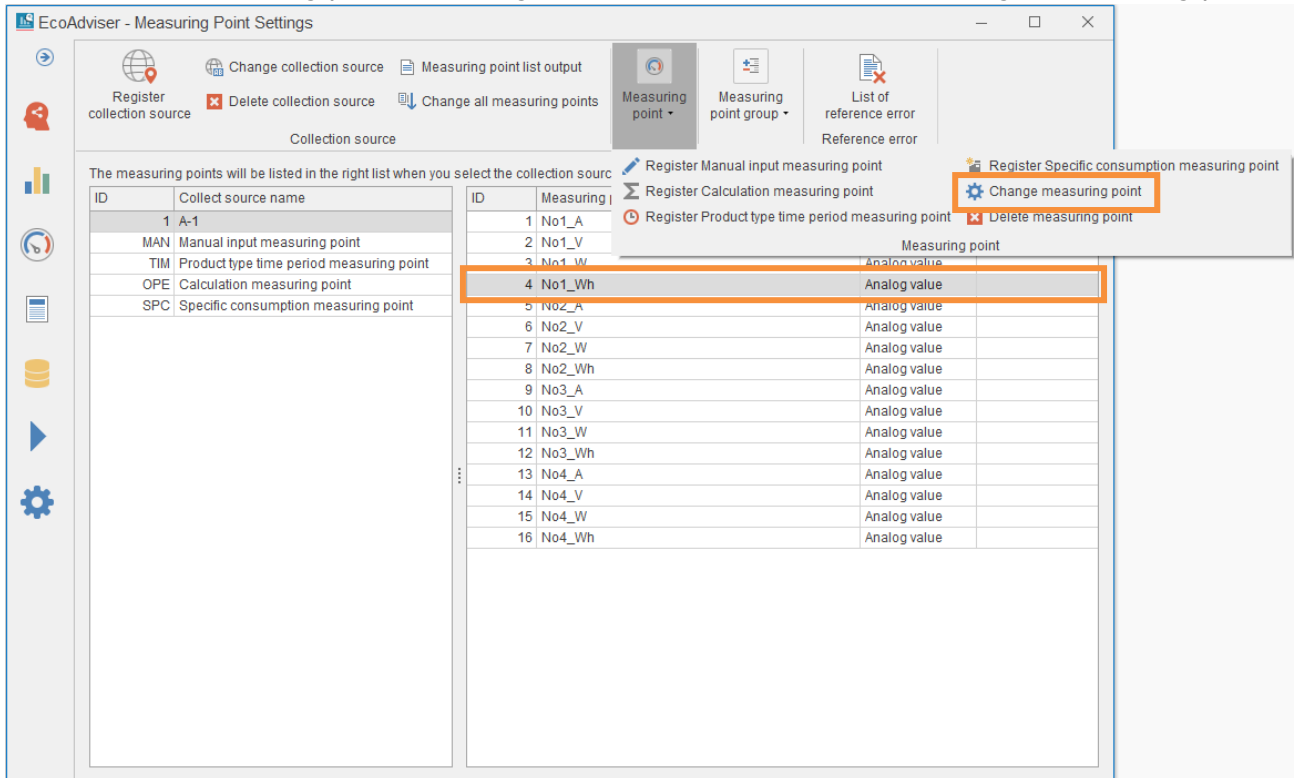


5. The measuring points of the collection source are registered.

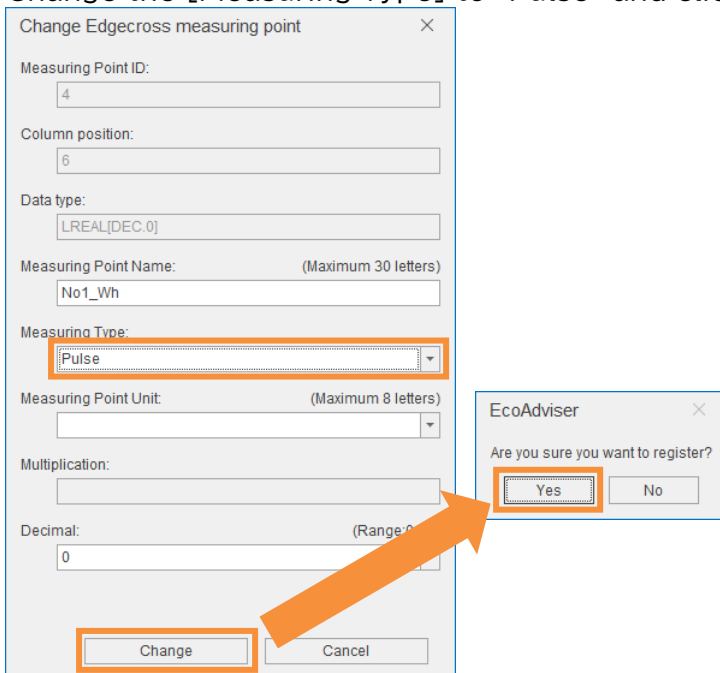


## 7 Convert the logging files of the MELSEC

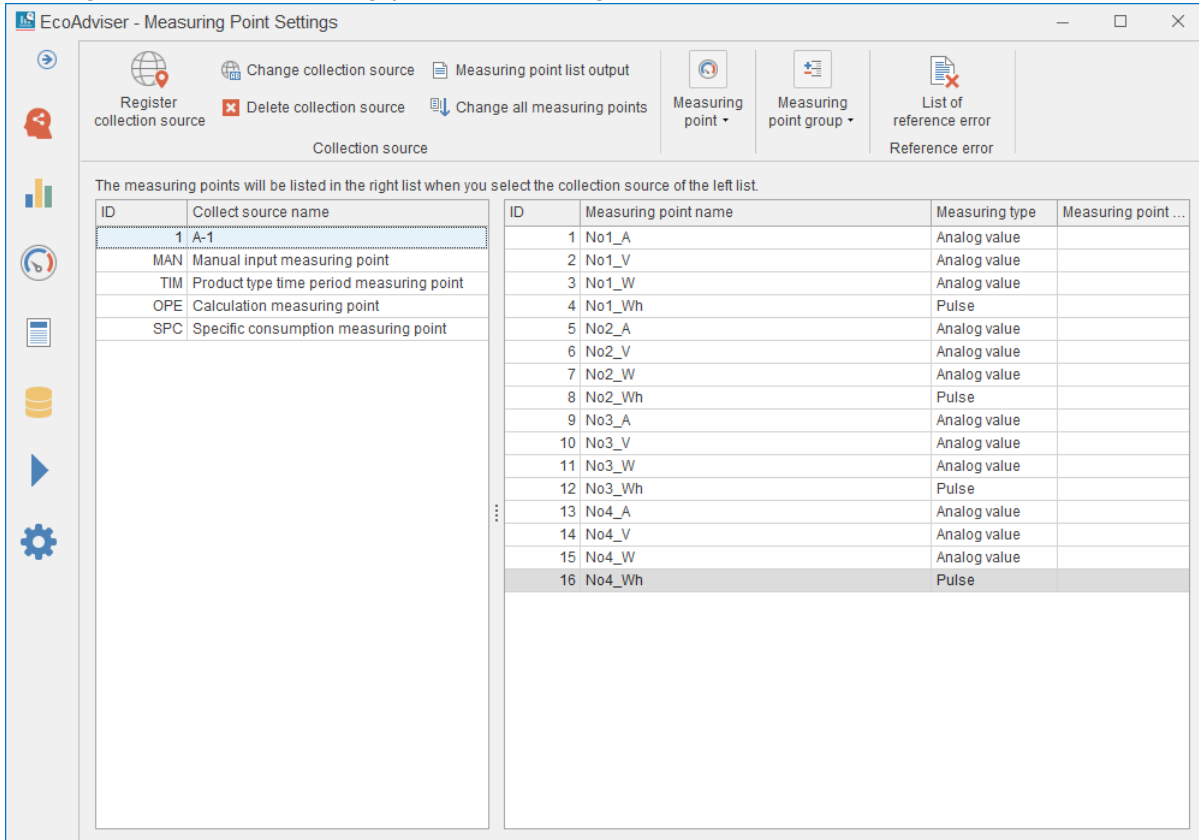
6. Since the [Measuring Type] is registered as "Analog value", change the [Measuring Type] of the integrated value to "Pulse".  
Select the measuring point of integrated value and click the [Change measuring point].



7. Change the [Measuring Type] to "Pulse" and click the [Change] button.



8. Change all the measuring points of integrated value.



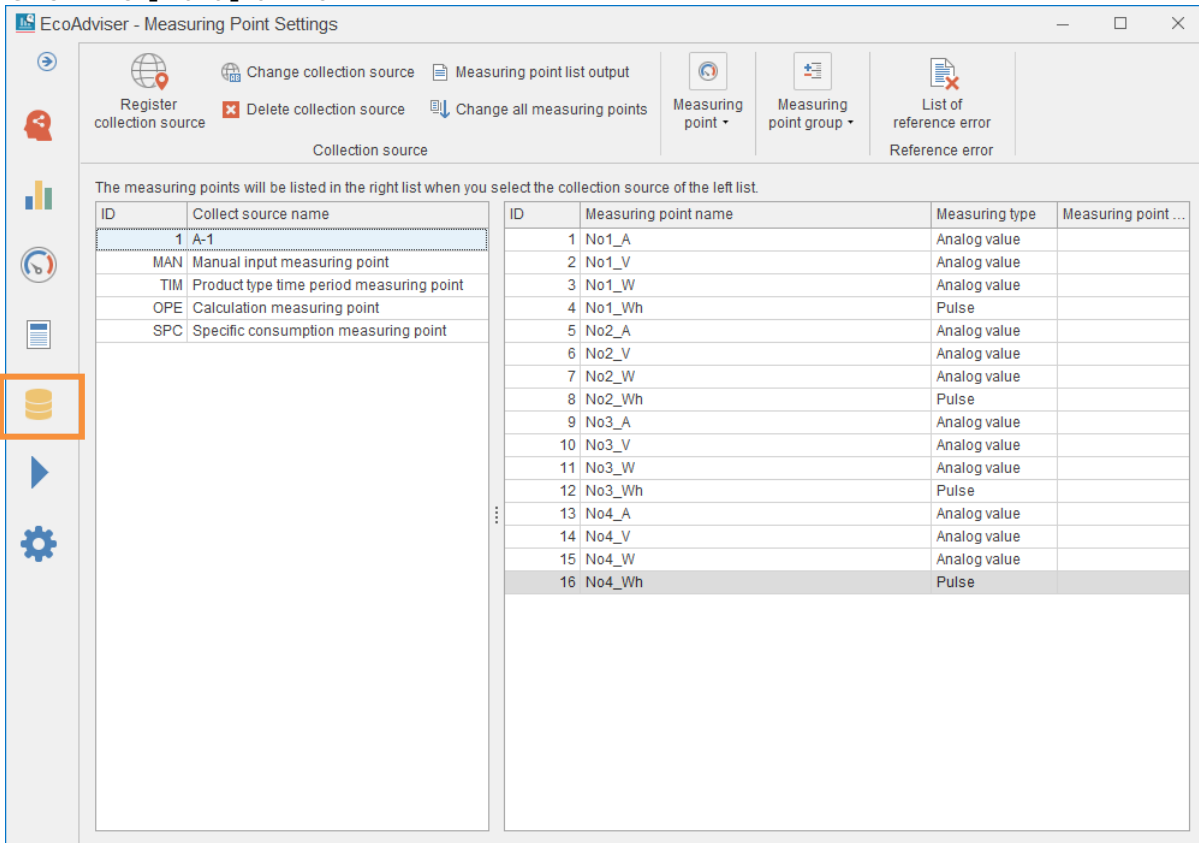
**Change all the measuring points**

If there are many measuring points of integrated value, you can change them all at once by following steps below.

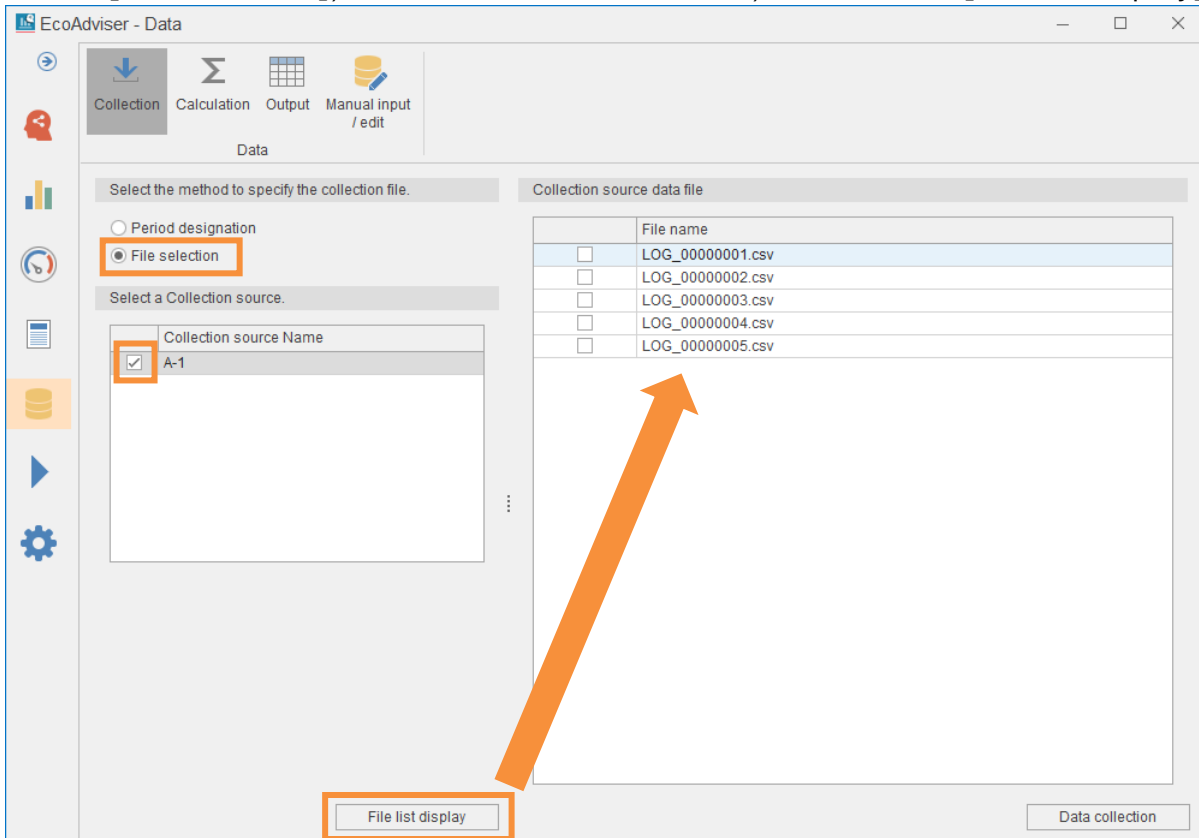
- 1) Click the [Measuring point list output] to output the measuring point list file.
- 2) Open the measuring point list file and change the [Measuring Type] from 2 (Analog value) to 1 (Pulse) for the measuring point of integrated value.
- 3) Save the measuring point list file.
- 4) Click the [Change all measuring points] and specify the edited measuring point list file.

## 7.4 Collect data with EcoAdviser

1. Click the [Data] button.



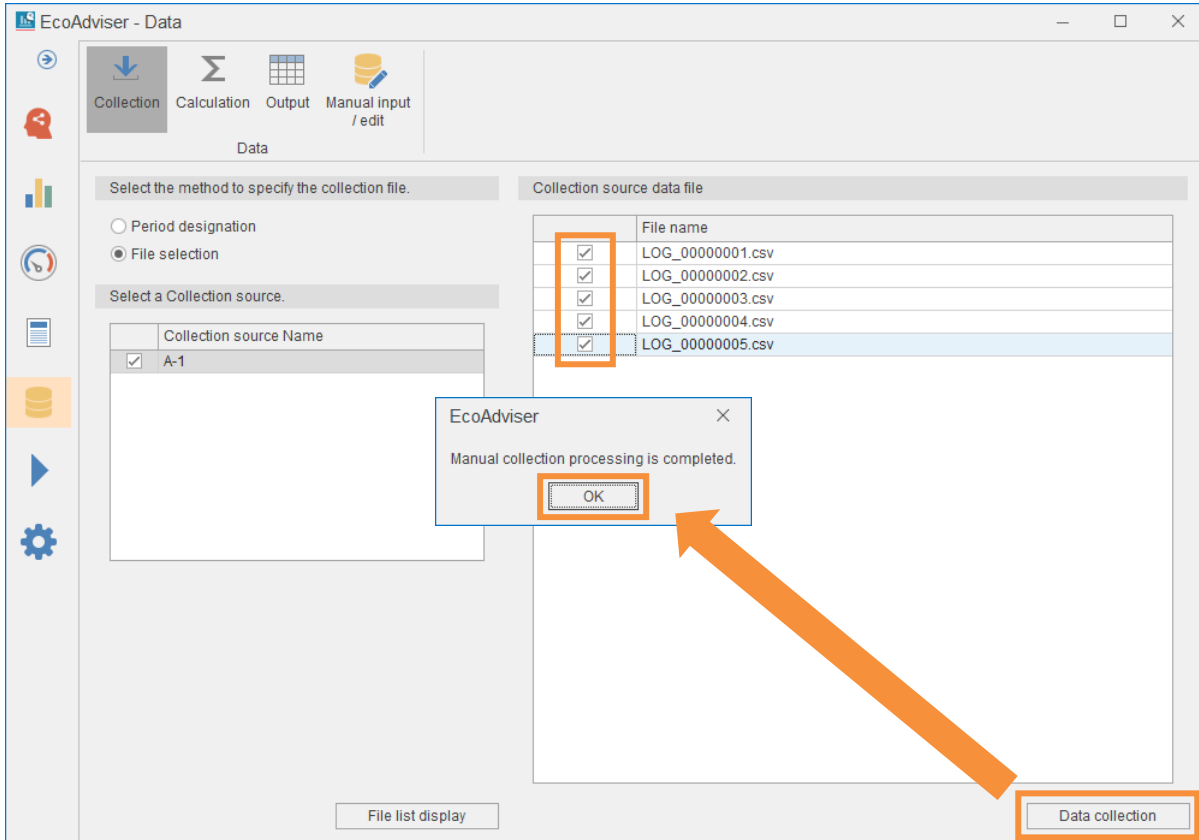
2. Select [File selection], check the collection source, and click the [File list display] button.





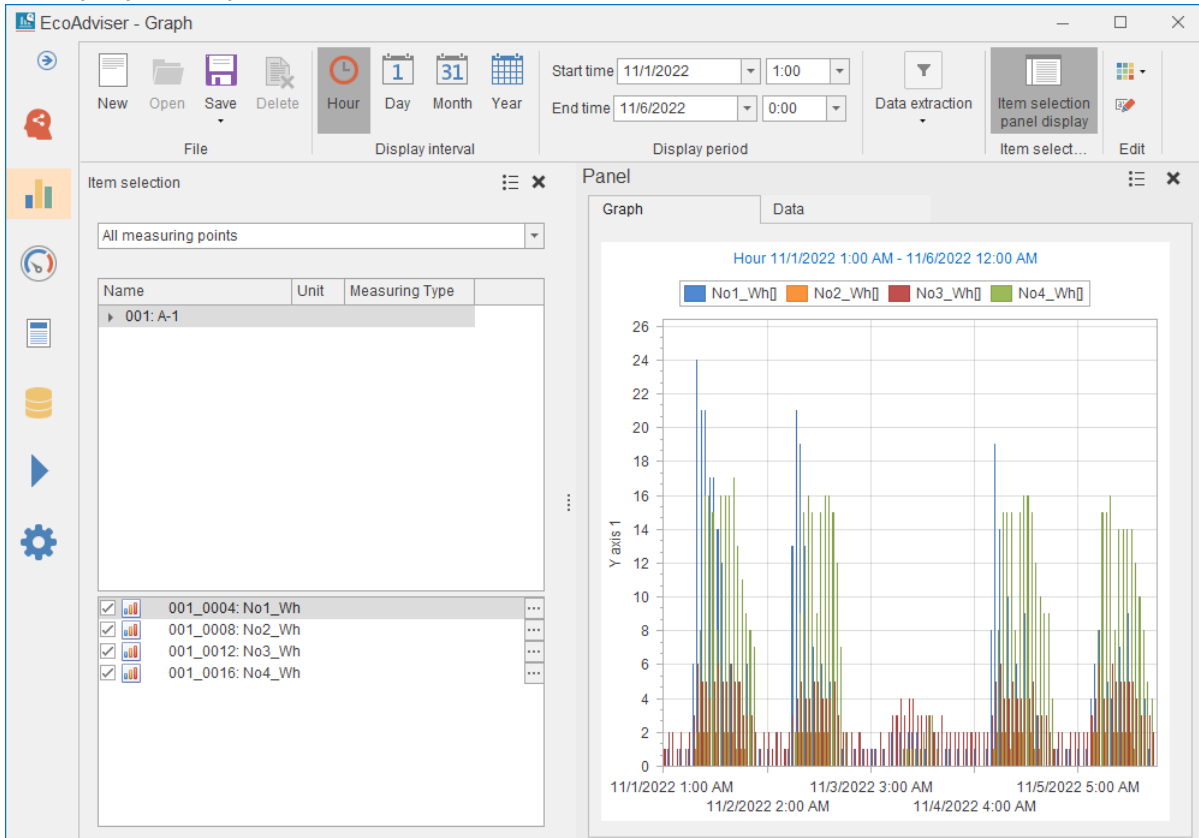
## 7 Convert the logging files of the MELSEC

3. Check the files to collect. Click the [Data collection] button to collect data.



4. View the collected data in graphs and so on.

■ Display example of a time series chart.



## 8 Troubleshooting

### 8.1 Error message and corrective action

This section describes corrective actions when an error message is displayed in this software.

Message	Corrective action
Failed to read the logging file config.	Are you running from the executable file displayed by double-clicking without unzipping the downloaded compressed file? In that case, decompress the compressed file and execute it. ▀3.1 Download
Select the source folder.	Select the source folder.
There is no selected source folder.	Check if the selected source folder exists.
Select the destination folder.	Select the destination folder.
There is no selected destination folder.	Check if the selected destination folder exists.
The source folder and the destination folder are the same.	Select a folder different from the source folder for the destination folder.
There is no file to be converted.	Select the folder containing the logging files to be converted. If you specify a range of periods, check if there is a logging file for the specified period.
Failed to read logging file. <Source file path>	Check if the format of the conversion source file is correct.
Failed to convert to data type file. <Source file path>	Close any files in the destination folder that are open in other applications.
Failed to convert to data file. <Source file path>	Close any files in the destination folder that are open in other applications.

## 8.2 Troubleshooting when collecting data with EcoAdviser

This section describes problems that occur when EcoAdviser collects files converted by this software and corrective action.

Problem	Check point	Corrective action
Data collection fails.	Are the data times of the logging file duplicated?	Collect data after removing duplicate data time records. ■2.3 Restrictions
Data had some missing parts.	<Target: Logging Unit> Does the data period setting of EcoAdviser match the logging cycle of the logging file?	Collect data after changing the data period setting of EcoAdviser to match the logging cycle of the logging file.
	<Target : Data Acquisition Software, MELSEC> Are you using a logging file whose logging cycle is longer than the data period setting of EcoAdviser?	Use a logging file with a logging cycle that is equal to or less than the data period setting of EcoAdviser.
The integrated value becomes an abnormal value.	Is the integration set correctly in the collection source settings of EcoAdviser?	Collect data after correctly setting the integration in the collection source settings of EcoAdviser. <Integration> Logging Unit: Difference Data Acquisition Software : Indicated MELSEC: Indicated
	Is the "Measuring Type" set to "Pulse" in the EcoAdviser measuring point settings?	Collect data after setting the "Measuring Type" to "Pulse" in the EcoAdviser measuring point settings.
	<Target: Logging Unit> Does the data period setting of EcoAdviser match the logging cycle of the logging file?	Collect data after changing the data period setting of EcoAdviser to match the logging cycle of the logging file.

## 9 Appendix

### 9.1 Q&A

---

Q	Can I use the converted data in the EcoAdviser dashboard?
---	---

A	You can paste the converted data into the dashboard, but the data will not automatically refresh.
---	---

Q	Can the converted data file be used in systems other than EcoAdviser?
---	---

A	We do not support the use of anything other than EcoAdviser.
---	--

### 9.2 Release notes

---

Version	Contents
1.0.0	The first release version.

## Trademarks

- Microsoft and Windows are registered trademarks of Microsoft Corporation in the United States and other countries.
- MODBUS is a trademark of Schneider Electric USA Inc.
- Ethernet is a trademark of FUJIFILM Business Innovation Corp.
- Unicode is either a registered trademark or a trademark of Unicode, Inc. in the United States and other countries.
- Edgex is a registered trademark of General Incorporated Association Edgex Consortium.
- Other company and product names herein are trademarks or registered trademarks of their respective owners.
- In the text, trademark symbols such as "™" and "®" may not be written.

## The Software end user license agreement

The terms and conditions of this Agreement shall apply to the software supplied herewith by MITSUBISHI ELECTRIC CORPORATION (hereinafter referred to as "MITSUBISHI") to you (hereinafter referred to as "CUSTOMER"). The term "SOFTWARE" means any program on any media and any and all related documents and materials provided herewith by MITSUBISHI.

The SOFTWARE is protected by copyright laws and international copyright treaties as well as any other applicable intellectual property laws and treaties. The SOFTWARE is licensed under the terms and conditions herein, not sold.

### ARTICLE 1 - GRANT OF LICENSE

- 1.1 MITSUBISHI hereby grants to CUSTOMER a non-exclusive and non-transferable license to use one copy of the SOFTWARE in object code form on a single module.
- 1.2 MITSUBISHI hereby grants to CUSTOMER a non-exclusive and non-transferable license to make one (1) copy of the SOFTWARE for ARCHIVAL PURPOSES ONLY; provided, however, that such copy shall contain the same copyright notice and proprietary marking appearing on the original SOFTWARE.

### ARTICLE 2 – COPYRIGHT

All title and copyrights in and to the SOFTWARE and any copies of the SOFTWARE shall be owned by MITSUBISHI. All rights not specifically and expressly granted to the CUSTOMER under this Agreement shall be reserved by MITSUBISHI.

### ARTICLE 3 – RESTRICTIONS

Except as expressly provided in the above Article 1, CUSTOMER shall not:

- (a) make any copy or copies of the SOFTWARE.
- (b) modify the SOFTWARE.
- (c) sell, distribute, sub-license, lease, rent, assign, transfer or otherwise dispose of the SOFTWARE.
- (d) reverse engineer, decompile or disassemble the SOFTWARE.
- (e) sub-license, assign or transfer the rights granted to CUSTOMER hereunder.

### ARTICLE 4 - LIMITED WARRANTY

- 4.1 MITSUBISHI will, free of charge, repair or replace any defective recording media upon which the SOFTWARE is recorded if the media is returned by CUSTOMER to the location where CUSTOMER obtained it within ninety (90) days from the date of initial receipt of the SOFTWARE by CUSTOMER. This limited warranty does not cover defects due to any accident, abuse or misapplication, or any cause occurring after the initial receipt of the SOFTWARE by CUSTOMER. The repair or replacement of the SOFTWARE pursuant to this Article 4.1 shall be CUSTOMER's exclusive remedy.
- 4.2 MITSUBISHI does not warrant that the functions of the SOFTWARE will meet CUSTOMER's requirements or that SOFTWARE operation will be error-free or uninterrupted.

### ARTICLE 5 - LIMITATION OF LIABILITY

MITSUBISHI SHALL NOT BE LIABLE FOR ANY DAMAGES INCLUDING, BUT NOT LIMITED TO, GENERAL, DIRECT, INDIRECT, SPECIAL, INCIDENTAL, OR CONSEQUENTIAL DAMAGES (INCLUDING BUT NOT LIMITED TO LOSS OF PROFITS, BUSINESS INTERRUPTION AND THE LIKE), WHETHER BASED ON CONTRACT, TORT, OR ANY OTHER LEGAL THEORY, AND EVEN IF ADVISED OF THE POSSIBILITY OF SUCH DAMAGES.

### ARTICLE 6 - EXPORT CONTROL

CUSTOMER agrees to comply strictly with all applicable laws and regulations including but not limited to export control laws and regulations. CUSTOMER shall not, without MITSUBISHI's prior written consent and any applicable governmental approval, carry out or export the SOFTWARE, directly or indirectly, to any country other than the country where CUSTOMER initially obtained the SOFTWARE.

### ARTICLE 7 - TERM AND TERMINATION

- 7.1 Unless terminated under this Agreement, this Agreement shall continue in effect indefinitely.
- 7.2 MITSUBISHI may terminate this Agreement if CUSTOMER fails to comply with any of the terms and conditions of this Agreement.
- 7.3 CUSTOMER may, with one (1) month prior written notice to MITSUBISHI, terminate this Agreement.
- 7.4 On termination of this Agreement for any reason, all CUSTOMER's rights granted by under this Agreement shall be automatically terminated and CUSTOMER shall promptly cease to use all the SOFTWARE and, at CUSTOMER's costs,
  - i) shall promptly return all copies of the SOFTWARE to MITSUBISHI or
  - ii) shall promptly destroy all copies of the SOFTWARE and submit to MITSUBISHI a certificate testifying that all copies of the SOFTWARE have been destroyed.

### ARTICLE 8 – MISCELLANEOUS

- 8.1 This Agreement shall be governed in all respects by the laws of Japan.
- 8.2 CUSTOMER agrees and acknowledges that CUSTOMER's breach or threatened breach of this Agreement will cause irreparable injury to MITSUBISHI and that, in addition to any other remedies that may be available, in law, in equity or otherwise, MITSUBISHI shall be entitled to obtain injunctive relief against threatened breach of this Agreement or the continuation of any such breach by CUSTOMER in any competent court.

# File converter for EcoAdviser

## Service Network

Country/Region	Corporation Name	Address	Telephone
Australia	Mitsubishi Electric Australia Pty. Ltd.	348 Victoria Road, Rydalmere, N.S.W. 2116, Australia	+61-2-9684-7777
Algeria	Mec Casa	Rue I N 125 Hay-Es-Salem, 02000, W-Chief, Algeria	+213-27798069
Bangladesh	PROGRESSIVE TRADING CORPORATION	HAQUE TOWER 2ND FLOOR, 610/11, JUBILEE ROAD, CHITTAGONG, BANGLADESH	+880-31-624307
	ELECTRO MECH AUTOMATION & ENGINEERING LTD.	SHATABDI CENTER, 12TH FLOOR, SUITES: 12-B, 292, INNER CIRCULAR ROAD, FAKIRA POOL, MOTIJHEEL, DHAKA-1000, BANGLADESH	+88-02-7192826
Belarus	Tehnikon	Oktyabrskaya 19, Off. 705, BY-220030 Minsk, Belarus	+375 (0)17 / 210 46 26
Belgium	Mitsubishi Electric Europe B.V. Benelux Branch	Niiverheidsweg 23A, 3641 RP Mijdrecht	+31 (0)297 250 350
Brazil	Mitsubishi Electric do Brasil Comércio e Serviços Ltda.	Avenida Adelino Cardana, 293 – 21º Andar, Bethaville, Barueri, SP, Brasil, CEP 06401-147	+55-11-4689-3000
Cambodia	DHINIMEX CO.,LTD	#245, St. Tep Phan, Phnom Penh, Cambodia	+855-23-997-725
Central America	Automation International LLC	7050 W. Palmetto Park Road Suite #15 PMB #555, Boca Raton, FL 33433	+1-561-237-5228
Chile	Rhona S.A. (Main office)	Vte. Agua Santa 4211 Casilla 30-D (P.O. Box) Vina del Mar, Chile	+56-32-2-320-600
China	Mitsubishi Electric Automation (China) Ltd.	Mitsubishi Electric Automation Building, No.1386 Hongqiao Road, Shanghai, China 200336	+86-21-2322-3030
	Mitsubishi Electric Automation (China) Ltd. Beijing	5/F, ONE INDIGO, 20 Jiuxianqiao Road Chaoyang District, Beijing, China 100016	+86-10-6518-8830
	Mitsubishi Electric Automation (China) Ltd. ShenZhen	Level 8, Galaxy World Tower B, 1 Yabao Road, Longgang District, Shenzhen, China 518129	+86-755-2399-8272
	Mitsubishi Electric Automation (China) Ltd. GuangZhou	Rm.1006, A1 Times E-Park, No.276-282, Hanxi Road East, Zhongcun Street, Panyu Distric, Guangzhou, China 510030	+86-20-8923-6730
	Mitsubishi Electric Automation (China) Ltd. ChengDu	1501-1503, 15F, Guang-hua Centre Building-C, No.98 North Guang Hua 3th Rd Chengdu, China 610000	+86-28-8446-8030
	Mitsubishi Electric Automation (Hong Kong) Ltd.	20/F., 1111 King's Road, Taikoo shing, Hong Kong	+852-2510-0555
Taiwan, China	Setsuyo Enterprise Co., Ltd.	5th Fl., No.105, Wu Kung 3rd, Wu-Ku Hsiang, Taipei, Taiwan	+886-(0)2-2298-8889
Colombia	Proelectrico Representaciones S.A.	Carrera 42 Nº 75 – 367 Bodega 109, Itagüí, Medellín, Antioquia, Colombia	+57-4-4441284
Czech Republic	AUTOCONT CONTROL SYSTEMS S.R.O	Technologická 374/6, CZ-708 00 Ostrava - Pustkovec	+420 595 691 150
Denmark	BEIJER ELECTRONICS A/S	LYKKEGARDSVEJ 17, DK-4000 ROSKILDE, Denmark	+45 (0)46/ 75 76 66
Egypt	Cairo Electrical Group	9, Rostoum St. Garden City P.O. Box 165-11516 Maglis El-Shaab, Cairo - Egypt	+20-2-27961337
France	Mitsubishi Electric Europe B.V. French Branch	FR-92741 Nanterre Cedex	+33 (0)1 55 68 57 01
Germany	Mitsubishi Electric Europe B.V.	Mitsubishi-Electric-Platz 1, 40882 Ratingen, Germany	+49 (0) 2102 4860
Greece	KALAMARAKIS - SAPOUNAS S.A.	IONIAS & NEROMILOU STR., CHAMOMILOS ACHARNES, ATHENS, 13678 Greece	+30-2102 406000
Hungary	UTECO	5, MAVROGENOUS STR., 18542 PIRAEUS, Greece	+30-211-1206-900
	Meltrade Ltd.	Ferő utca 14. HU-1107 Budapest, Hungary	+36 (0)1-431-9726
India	Mitsubishi Electric India Private Limited	2nd Floor, Tower A&B, Cyber Greens, DLF Cyber City, DLF Phase-III, Gurgaon - 122 022 Haryana, India	+91-124-4630300
	Mitsubishi Electric India Private Limited Pune Sales Office	ICC-Devi Gaurav Technology Park, Unit no. 402, Fourth Floor, Survey no. 191-192 (P), Opp. Vallabh Nagar Bus Depot, Pune – 411018, Maharashtra, India	+91-20-68192100
	Mitsubishi Electric India Private Limited FA Center	204-209, 2nd Floor, 31FIVE, Corporate Road, Prahladnagar, Ahmedabad 380015, Gujarat, India	+91-79677-77888
Indonesia	PT.Mitsubishi Electric Indonesia	Gedung Jaya 8th floor, J.L.MH. Thamrin No.12 Jakarta Pusat 10340, Indonesia	+62-21-3192-6461
Ireland	P.T. Sahabat Indonesia	P.O.Box 5045 Kawasan Industri Perungdangan, Jakarta, Indonesia	+62-(0)21-6610651-9
	Mitsubishi Electric Europe B.V.	Westgate Business Park, Ballymount, IRL-Dublin 24, Ireland	+353 (0)1-4198800
Israel	Gino Industries Ltd.	26, Ophir Street IL-32235 Haifa, Israel	+972 (0)4-867-0656
Italy	Mitsubishi Electric Europe B.V.	Viale Colleoni 7, I-20041 Agrate Brianza (MI), Italy	+39 039-60531
Kazakhstan	Kazpromavtomatika	Ul. Zhambyla 28, KAZ - 100017 Karaganda	+7-7212-501000
Korea	Mitsubishi Electric Automation Korea Co., Ltd	9F Gangseo Hangang xi-tower A, 401 Yangcheon-ro, Gangseo-gu, Seoul 07528 Korea	+82-2-3660-9573
Laos	AROUNKIT CORPORATION IMPORT-EXPORT SOLE CO.,LTD	SAPHANMO VILLAGE. SAYSETHA DISTRICT, VIENTIANE CAPITAL, LAOS	+856-20-415899
Lebanon	Comptoir d'Electricite Generale-Liban	Cebaco Center - Block A Autostrade Dora, P.O. Box 11-2597 Beirut - Lebanon	+961-1-240445
Lithuania	Rifas UAB	Tinklu 29A, LT-5300 Panevezys, Lithuania	+370 (0)45-582-728
Malaysia	Mitric Sdn Bhd	No. 5 Jalan Pemberita U1/49, Temasya Industrial Park, Glenmarie 40150 Shah Alam, Selangor, Malaysia	+603-5569-3748
	Flexible Automation System Sdn Bhd	60, Jalan USJ 10/1B, UEP Subang Jaya 47620 Selangor Darul Ehsan, Malaysia	+603-5633-1280
Malta	ALFATRADE LTD	99 PAOLA HILL, PAOLA PLA 1702, Malta	+356 (0)21-697-816
Marocco	SCHIELE MAROC	KM 7.2 NOUVELLE ROUTE DE RABAT AIN SEBAA, 20600 Casablanca, Marocco	+212 661 45 15 96
Myanmar	Peace Myanmar Electric Co.,Ltd.	NO137/139 Botahtaung Pagoda Road, Botahtaung Town Ship 11161, Yangon, Myanmar	+95-(0)1-202589
Nepal	Watt&Volt House	KHA 2-65, Volt House Dillibazar Post Box:2108, Kathmandu, Nepal	+977-1-4411330
Netherlands	Mitsubishi Electric Europe B.V. Benelux Branch	Niiverheidsweg 23A, 3641 RP Mijdrecht	+31 (0)297 250 350
North America	Mitsubishi Electric Automation, Inc.	500 Corporate Woods Parkway, Vernon Hills, IL 60061 USA	+847-478-2100
Norway	Scanelec AS	Leivrikasen 43B, NO-5179 Godvik, Norway	+47 (0)55-506000
Mexico	Mitsubishi Electric Automation, Inc. Mexico Branch	Bldv. Miguel de Cervantes Saavedra 301, Torre Norte Piso 5, Col. Ampliación Granada, Miguel Hidalgo, Ciudad de México, CP 11520, México	+52-55-3067-7511
Middle East Arab Countries & Cyprus	Comptoir d'Electricite Generale-International-S.A.L.	Cebaco Center - Block A Autostrade Dora P.O. Box 11-1314 Beirut - Lebanon	+961-1-240430
Pakistan	Prince Electric Co.	2-P GULBERG II, LAHORE, 54600, PAKISTAN	+92-42-575232, 5753373
Peru	Rhona S.A. (Branch office)	Avenida Argentina 2201, Cercado de Lima	+51-1-484-4459
Philippines	MELCO Factory Automation Philippines Inc.	128, Lopez Rizal St., Brgy. Highway Hills, Mandaluyong City, Metro Manila, Philippines	+63-(0)2-256-8042
	Edison Electric Integrated, Inc.	24th Fl. Galleria Corporate Center, Edsa Cr. Ortigas Ave., Quezon City Metro Manila, Philippines	+63-(0)2-634-8691
Poland	Mitsubishi Electric Europe B.V. Polish Branch	Krakowska 48, 32-083 Balice, Poland	+48 12 347 65 00
Republic of Moldova	Intehsis SRL	bld. Traian 23/1, MD-2060 Kishinev, Moldova	+373 (0)22-66-4242
Romania	Sirius Trading & Services SRL	RO-060841 Bucuresti, Sector 6 Aleea Lacul Morii Nr. 3	+40-(0)21-430-40-06
Russia	Mitsubishi Electric (Russia) LLC	2 bld.1. Letnikovskaya street, Moscow, 115114, Russia	+7 495 721-2070
Saudi Arabia	Center of Electrical Goods	Al-Shuwayyer St. Side way of Salahuddin Al-Ayoubi St. P.O. Box 15955 Riyadh 11454 - Saudi Arabia	+966-1-4770149
Singapore	Mitsubishi Electric Asia Pte. Ltd.	307 Alexandra Road, Mitsubishi Electric Building, Singapore 159943	+65-6473-2308
Slovakia	PROCONT, Presov	Kupelna 1/, SK - 08001 Presov, Slovakia	+421 (0)51 - 7580 611
	SIMAP	Jana Derku 1671, SK - 91101 Trenčín, Slovakia	+421 (0)32 743 04 72
Slovenia	Inea RBT d.o.o.	Stegne 11, SI-1000 Ljubljana, Slovenia	+386 (0)1-513-8116
South Africa	CBI-electric; low voltage	Private Bag 2016, ZA-1600 Isando Gauteng, South Africa	+27-(0)11-9282000
Spain	Mitsubishi Electric Europe B.V. Spanish Branch	Carretera de Rubí 76-80, E-08190 Sant Cugat del Vallés (Barcelona), Spain	+34 (0)93-565-3131
Sweden	Mitsubishi Electric Europe B.V. (Scandinavia)	Hedvig Möllers gata 6, 223 55 Lund, Sweden	+46 (0)8-625-10-00
	Euro Energy Components AB	Jämvägsgatan 36, S-434 24 Kungsbacka, Sweden	+46 (0)300-690040
Switzerland	TriElec AG	Muehlentalstrasse 136, CH-8201 Schaffhausen, Switzerland	+41-(0)52-6258425
Thailand	United Trading & Import Co., Ltd.	77/12 Bamrungruang Road, Klong Mahanak Pomprab Bangkok Thailand	+66-223-4220-3
	MITSUBISHI ELECTRIC FACTORY AUTOMATION (THAILAND) CO.,LTD	101, True Digital Park Office, 5th Floor, Sukhumvit Road, Bangchak, Phara Khanong, Bangkok, 10260 Thailand	+662-092-8600
Tunisia	MOTRA Electric	3, Résidence Imen, Avenue des Martyrs Mourouj III, 2074 - El Mourouj III Ben Arous, Tunisia	+216-71 474 599
Turkey	Mitsubishi Electric Turkey A.Ş.	Şerifali Mahallesi Kale Sokak No: 41, 34775 Ümraniye, İstanbul, Turkey	+90-216-969-2666
United Kingdom	Mitsubishi Electric Europe B.V.	Travellers Lane, UK-Hatfield, Herts. AL10 8XB, United Kingdom	+44 (0)1707-276100
Uruguay	Fierro Vignoli S.A.	Avda. Uruguay 1274 Montevideo Uruguay	+598-2-902-0808
Vietnam	Mitsubishi Electric Vietnam Co.,Ltd. Head Office	11th & 12th Floor, Viettel Tower B, 285 Cach Mang Thang 8 Street, Ward 12, District 10, Ho Chi Minh City, Vietnam	+84-28-3910-5945
	Mitsubishi Electric Vietnam Co.,Ltd. Hanoi Branch	24th Floor, Handico Tower, Pham Hung Road, khu do thi moi Me Tri Ha, Nam Tu Liem District, Hanoi City, Vietnam	+84-24-3937-8075

**MITSUBISHI ELECTRIC CORPORATION**  
 HEAD OFFICE: TOKYO BUILDING, 2-7-3, MARUNOUCHI, CHIYODA-KU, TOKYO 100-8310, JAPAN