



Programmable Controller

MELSEC iQ-R
series

MELSEC iQ-R High Speed Analog-Digital
Converter Module
User's Manual (Startup)

-R60ADH4



SAFETY PRECAUTIONS

(Read these precautions before using this product.)

Before using this product, please read this manual and the relevant manuals carefully and pay full attention to safety to handle the product correctly.

The precautions given in this manual are concerned with this product only. For the safety precautions of the programmable controller system, refer to the MELSEC iQ-R Module Configuration Manual.

In this manual, the safety precautions are classified into two levels: "⚠️ WARNING" and "⚠️ CAUTION".

 WARNING	Indicates that incorrect handling may cause hazardous conditions, resulting in death or severe injury.
 CAUTION	Indicates that incorrect handling may cause hazardous conditions, resulting in minor or moderate injury or property damage.

Under some circumstances, failure to observe the precautions given under "⚠️ CAUTION" may lead to serious consequences.

Observe the precautions of both levels because they are important for personal and system safety.

Make sure that the end users read this manual and then keep the manual in a safe place for future reference.

[Design Precautions]

WARNING

- Configure safety circuits external to the programmable controller to ensure that the entire system operates safely even when a fault occurs in the external power supply or the programmable controller. Failure to do so may result in an accident due to an incorrect output or malfunction.
 - (1) Emergency stop circuits, protection circuits, and protective interlock circuits for conflicting operations (such as forward/reverse rotations or upper/lower limit positioning) must be configured external to the programmable controller.
 - (2) When the programmable controller detects an abnormal condition, it stops the operation and all outputs are:
 - Turned off if the overcurrent or overvoltage protection of the power supply module is activated.
 - Held or turned off according to the parameter setting if the self-diagnostic function of the CPU module detects an error such as a watchdog timer error.
 - (3) All outputs may be turned on if an error occurs in a part, such as an I/O control part, where the CPU module cannot detect any error. To ensure safety operation in such a case, provide a safety mechanism or a fail-safe circuit external to the programmable controller. For a fail-safe circuit example, refer to "General Safety Requirements" in the MELSEC iQ-R Module Configuration Manual.
 - (4) Outputs may remain on or off due to a failure of a component such as a relay and transistor in an output circuit. Configure an external circuit for monitoring output signals that could cause a serious accident.
 - In an output circuit, when a load current exceeding the rated current or an overcurrent caused by a load short-circuit flows for a long time, it may cause smoke and fire. To prevent this, configure an external safety circuit, such as a fuse.
 - Configure a circuit so that the programmable controller is turned on first and then the external power supply. If the external power supply is turned on first, an accident may occur due to an incorrect output or malfunction.
 - Configure a circuit so that the external power supply is turned off first and then the programmable controller. If the programmable controller is turned off first, an accident may occur due to an incorrect output or malfunction.
 - For the operating status of each station after a communication failure, refer to manuals for the network used. For the manuals, please consult your local Mitsubishi representative. Incorrect output or malfunction due to a communication failure may result in an accident.
-

[Design Precautions]

WARNING

- When connecting an external device with a CPU module or intelligent function module to modify data of a running programmable controller, configure an interlock circuit in the program to ensure that the entire system will always operate safely. For other forms of control (such as program modification, parameter change, forced output, or operating status change) of a running programmable controller, read the relevant manuals carefully and ensure that the operation is safe before proceeding. Improper operation may damage machines or cause accidents. When a Safety CPU is used, data cannot be modified while the Safety CPU is in SAFETY MODE.
 - Especially, when a remote programmable controller is controlled by an external device, immediate action cannot be taken if a problem occurs in the programmable controller due to a communication failure. To prevent this, configure an interlock circuit in the program, and determine corrective actions to be taken between the external device and CPU module in case of a communication failure.
 - Do not write any data to the "system area" and "write-protect area" of the buffer memory in the module. Also, do not use any "use prohibited" signals as an output signal from the CPU module to each module. Doing so may cause malfunction of the programmable controller system. For the "system area", "write-protect area", and the "use prohibited" signals, refer to the user's manual for the module used. For areas used for safety communications, they are protected from being written by users, and thus safety communications failure caused by data writing does not occur.
 - If a communication cable is disconnected, the network may be unstable, resulting in a communication failure of multiple stations. Configure an interlock circuit in the program to ensure that the entire system will always operate safely even if communications fail. Failure to do so may result in an accident due to an incorrect output or malfunction. When safety communications are used, an interlock by the safety station interlock function protects the system from an incorrect output or malfunction.
-

[Design Precautions]

CAUTION

- Do not install the control lines or communication cables together with the main circuit lines or power cables. Doing so may result in malfunction due to electromagnetic interference. Keep a distance of 100mm or more between those cables.
 - During control of an inductive load such as a lamp, heater, or solenoid valve, a large current (approximately ten times greater than normal) may flow when the output is turned from off to on. Therefore, use a module that has a sufficient current rating.
 - After the CPU module is powered on or is reset, the time taken to enter the RUN status varies depending on the system configuration, parameter settings, and/or program size. Design circuits so that the entire system will always operate safely, regardless of the time.
 - Do not power off the programmable controller or reset the CPU module while the settings are being written. Doing so will make the data in the flash ROM and SD memory card undefined. The values need to be set in the buffer memory and written to the flash ROM and SD memory card again. Doing so also may cause malfunction or failure of the module.
 - When changing the operating status of the CPU module from external devices (such as the remote RUN/STOP functions), select "Do Not Open by Program" for "Opening Method" of "Module Parameter". If "OPEN in Program" is selected, an execution of the remote STOP function causes the communication line to close. Consequently, the CPU module cannot reopen the line, and external devices cannot execute the remote RUN function.
-

[Security Precautions]

WARNING

- To maintain the security (confidentiality, integrity, and availability) of the programmable controller and the system against unauthorized access, denial-of-service (DoS) attacks, computer viruses, and other cyberattacks from external devices via the network, take appropriate measures such as firewalls, virtual private networks (VPNs), and antivirus solutions.
-

[Installation Precautions]

WARNING

- Shut off the external power supply (all phases) used in the system before mounting or removing the module. Failure to do so may result in electric shock or cause the module to fail or malfunction.
-

[Installation Precautions]

CAUTION

- Use the programmable controller in an environment that meets the general specifications in the MELSEC iQ-R Module Configuration Manual. Failure to do so may result in electric shock, fire, malfunction, or damage to or deterioration of the product.
 - To mount a module, place the concave part(s) located at the bottom onto the guide(s) of the base unit, and push in the module until the hook(s) located at the top snaps into place. Incorrect interconnection may cause malfunction, failure, or drop of the module.
 - To mount a module with no module fixing hook, place the concave part(s) located at the bottom onto the guide(s) of the base unit, push in the module, and fix it with screw(s). Incorrect interconnection may cause malfunction, failure, or drop of the module.
 - When using the programmable controller in an environment of frequent vibrations, fix the module with a screw.
 - Tighten the screws within the specified torque range. Undertightening can cause drop of the component or wire, short circuit, or malfunction. Overtightening can damage the screw and/or module, resulting in drop, short circuit, or malfunction. For the specified torque range, refer to the MELSEC iQ-R Module Configuration Manual.
 - When using an extension cable, connect it to the extension cable connector of the base unit securely. Check the connection for looseness. Poor contact may cause malfunction.
 - When using an SD memory card, fully insert it into the SD memory card slot. Check that it is inserted completely. Poor contact may cause malfunction.
 - Securely insert an extended SRAM cassette or a battery-less option cassette into the cassette connector of the CPU module. After insertion, close the cassette cover and check that the cassette is inserted completely. Poor contact may cause malfunction.
 - Beware that the module could be very hot while power is on and immediately after power-off.
 - Do not directly touch any conductive parts and electronic components of the module, SD memory card, extended SRAM cassette, battery-less option cassette, or connector. Doing so can cause malfunction or failure of the module.
-

[Wiring Precautions]

WARNING

- Shut off the external power supply (all phases) used in the system before installation and wiring. Failure to do so may result in electric shock or cause the module to fail or malfunction.
- After installation and wiring, attach a blank cover module (RG60) to each empty slot before powering on the system for operation. Also, attach an extension connector protective cover^{*1} to each unused extension cable connector as necessary. Directly touching any conductive parts of the connectors while power is on may result in electric shock.

*1 For details, please consult your local Mitsubishi Electric representative.

[Wiring Precautions]

CAUTION

- Individually ground the FG and LG terminals of the programmable controller with a ground resistance of 100 ohms or less. Failure to do so may result in electric shock or malfunction.
 - Use applicable solderless terminals and tighten them within the specified torque range. If any spade solderless terminal is used, it may be disconnected when the terminal screw comes loose, resulting in failure.
 - Check the rated voltage and signal layout before wiring to the module, and connect the cables correctly. Connecting a power supply with a different voltage rating or incorrect wiring may cause fire or failure.
 - Connectors for external devices must be crimped or pressed with the tool specified by the manufacturer, or must be correctly soldered. Incomplete connections may cause short circuit, fire, or malfunction.
 - Securely connect the connector to the module. Poor contact may cause malfunction.
 - Do not install the control lines or communication cables together with the main circuit lines or power cables. Doing so may result in malfunction due to noise. Keep a distance of 100mm or more between those cables.
 - Place the cables in a duct or clamp them. If not, dangling cables may swing or inadvertently be pulled, resulting in malfunction or damage to modules or cables. In addition, the weight of the cables may put stress on modules in an environment of strong vibrations and shocks. Do not clamp the extension cables with the jacket stripped. Doing so may change the characteristics of the cables, resulting in malfunction.
 - Check the interface type and correctly connect the cable. Incorrect wiring (connecting the cable to an incorrect interface) may cause failure of the module and external device.
 - Tighten the terminal screws or connector screws within the specified torque range. Undertightening can cause drop of the screw, short circuit, fire, or malfunction. Overtightening can damage the screw and/or module, resulting in drop, short circuit, fire, or malfunction.
 - When disconnecting the cable from the module, do not pull the cable by the cable part. For the cable with connector, hold the connector part of the cable. For the cable connected to the terminal block, loosen the terminal screw. Pulling the cable connected to the module may result in malfunction or damage to the module or cable.
 - Prevent foreign matter such as dust or wire chips from entering the module. Such foreign matter can cause a fire, failure, or malfunction.
 - When a protective film is attached to the top of the module, remove it before system operation. If not, inadequate heat dissipation of the module may cause a fire, failure, or malfunction.
 - Programmable controllers must be installed in control panels. Connect the main power supply to the power supply module in the control panel through a relay terminal block. Wiring and replacement of a power supply module must be performed by qualified maintenance personnel with knowledge of protection against electric shock. For wiring, refer to the MELSEC iQ-R Module Configuration Manual.
 - For Ethernet cables to be used in the system, select the ones that meet the specifications in the user's manual for the module used. If not, normal data transmission is not guaranteed.
-

[Startup and Maintenance Precautions]

WARNING

- Do not touch any terminal while power is on. Doing so will cause electric shock or malfunction.
 - Correctly connect the battery connector. Do not charge, disassemble, heat, short-circuit, solder, or throw the battery into the fire. Also, do not expose it to liquid or strong shock. Doing so will cause the battery to produce heat, explode, ignite, or leak, resulting in injury and fire.
 - Shut off the external power supply (all phases) used in the system before cleaning the module or retightening the terminal screws, connector screws, or module fixing screws. Failure to do so may result in electric shock.
-

[Startup and Maintenance Precautions]

CAUTION

- When connecting an external device with a CPU module or intelligent function module to modify data of a running programmable controller, configure an interlock circuit in the program to ensure that the entire system will always operate safely. For other forms of control (such as program modification, parameter change, forced output, or operating status change) of a running programmable controller, read the relevant manuals carefully and ensure that the operation is safe before proceeding. Improper operation may damage machines or cause accidents.
 - Especially, when a remote programmable controller is controlled by an external device, immediate action cannot be taken if a problem occurs in the programmable controller due to a communication failure. To prevent this, configure an interlock circuit in the program, and determine corrective actions to be taken between the external device and CPU module in case of a communication failure.
 - Do not disassemble or modify the modules. Doing so may cause failure, malfunction, injury, or a fire.
 - Use any radio communication device such as a cellular phone or PHS (Personal Handy-phone System) 25cm or more away in all directions from the programmable controller. Failure to do so may cause malfunction.
 - Shut off the external power supply (all phases) used in the system before mounting or removing the module. Failure to do so may cause the module to fail or malfunction.
 - Tighten the screws within the specified torque range. Undertightening can cause drop of the component or wire, short circuit, or malfunction. Overtightening can damage the screw and/or module, resulting in drop, short circuit, or malfunction.
 - After the first use of the product, do not perform each of the following operations more than 50 times (IEC 61131-2/JIS B 3502 compliant).
Exceeding the limit may cause malfunction.
 - Mounting/removing the module to/from the base unit
 - Inserting/removing the extended SRAM cassette or battery-less option cassette to/from the CPU module
 - Mounting/removing the terminal block to/from the module
 - Connecting/disconnecting the extension cable to/from the base unit
 - After the first use of the product, do not insert/remove the SD memory card to/from the CPU module more than 500 times. Exceeding the limit may cause malfunction.
 - Do not touch the metal terminals on the back side of the SD memory card. Doing so may cause malfunction or failure of the module.
 - Do not touch the integrated circuits on the circuit board of an extended SRAM cassette or a battery-less option cassette. Doing so may cause malfunction or failure of the module.
 - Do not drop or apply shock to the battery to be installed in the module. Doing so may damage the battery, causing the battery fluid to leak inside the battery. If the battery is dropped or any shock is applied to it, dispose of it without using.
 - Startup and maintenance of a control panel must be performed by qualified maintenance personnel with knowledge of protection against electric shock. Lock the control panel so that only qualified maintenance personnel can operate it.
 - Before handling the module, touch a conducting object such as a grounded metal to discharge the static electricity from the human body. Wearing a grounded antistatic wrist strap is recommended. Failure to discharge the static electricity may cause the module to fail or malfunction.
-

[Startup and Maintenance Precautions]

CAUTION

- After unpacking, eliminate static electricity from the module to prevent electrostatic discharge from affecting the module. If an electrostatically charged module comes in contact with a grounded metal object, a sudden electrostatic discharge of the module may cause failure.
For details on how to eliminate static electricity from the module, refer to the following.
Antistatic Precautions Before Using MELSEC iQ-R Series Products (FA-A-0368)
 - Use a clean and dry cloth to wipe off dirt on the module.
-

[Operating Precautions]

CAUTION

- When changing data and operating status, and modifying program of the running programmable controller from an external device such as a personal computer connected to an intelligent function module, read relevant manuals carefully and ensure the safety before operation. Incorrect change or modification may cause system malfunction, damage to the machines, or accidents.
 - Do not power off the programmable controller or reset the CPU module while the setting values in the buffer memory are being written to the flash ROM in the module. Doing so will make the data in the flash ROM and SD memory card undefined. The values need to be set in the buffer memory and written to the flash ROM and SD memory card again. Doing so can cause malfunction or failure of the module.
-

[Disposal Precautions]

CAUTION

- When disposing of this product, treat it as industrial waste.
 - When disposing of batteries, separate them from other wastes according to the local regulations. For details on battery regulations in EU member states, refer to the MELSEC iQ-R Module Configuration Manual.
-

[Transportation Precautions]

CAUTION

- When transporting lithium batteries, follow the transportation regulations. For details on the regulated models, refer to the MELSEC iQ-R Module Configuration Manual.
 - The halogens (such as fluorine, chlorine, bromine, and iodine), which are contained in a fumigant used for disinfection and pest control of wood packaging materials, may cause failure of the product. Prevent the entry of fumigant residues into the product or consider other methods (such as heat treatment) instead of fumigation. The disinfection and pest control measures must be applied to unprocessed raw wood.
-

CONDITIONS OF USE FOR THE PRODUCT

- (1) MELSEC programmable controller ("the PRODUCT") shall be used in conditions;
- i) where any problem, fault or failure occurring in the PRODUCT, if any, shall not lead to any major or serious accident; and
 - ii) where the backup and fail-safe function are systematically or automatically provided outside of the PRODUCT for the case of any problem, fault or failure occurring in the PRODUCT.
- (2) The PRODUCT has been designed and manufactured for the purpose of being used in general industries. MITSUBISHI ELECTRIC SHALL HAVE NO RESPONSIBILITY OR LIABILITY (INCLUDING, BUT NOT LIMITED TO ANY AND ALL RESPONSIBILITY OR LIABILITY BASED ON CONTRACT, WARRANTY, TORT, PRODUCT LIABILITY) FOR ANY INJURY OR DEATH TO PERSONS OR LOSS OR DAMAGE TO PROPERTY CAUSED BY the PRODUCT THAT ARE OPERATED OR USED IN APPLICATION NOT INTENDED OR EXCLUDED BY INSTRUCTIONS, PRECAUTIONS, OR WARNING CONTAINED IN MITSUBISHI ELECTRIC USER'S, INSTRUCTION AND/OR SAFETY MANUALS, TECHNICAL BULLETINS AND GUIDELINES FOR the PRODUCT.
- ("Prohibited Application")
- Prohibited Applications include, but not limited to, the use of the PRODUCT in;
- Nuclear Power Plants and any other power plants operated by Power companies, and/or any other cases in which the public could be affected if any problem or fault occurs in the PRODUCT.
 - Railway companies or Public service purposes, and/or any other cases in which establishment of a special quality assurance system is required by the Purchaser or End User.
 - Aircraft or Aerospace, Medical applications, Train equipment, transport equipment such as Elevator and Escalator, Incineration and Fuel devices, Vehicles, Manned transportation, Equipment for Recreation and Amusement, and Safety devices, handling of Nuclear or Hazardous Materials or Chemicals, Mining and Drilling, and/or other applications where there is a significant risk of injury to the public or property.
- Notwithstanding the above restrictions, Mitsubishi Electric may in its sole discretion, authorize use of the PRODUCT in one or more of the Prohibited Applications, provided that the usage of the PRODUCT is limited only for the specific applications agreed to by Mitsubishi Electric and provided further that no special quality assurance or fail-safe, redundant or other safety features which exceed the general specifications of the PRODUCTS are required. For details, please contact the Mitsubishi Electric representative in your region.
- (3) Mitsubishi Electric shall have no responsibility or liability for any problems involving programmable controller trouble and system trouble caused by DoS attacks, unauthorized access, computer viruses, and other cyberattacks.

INTRODUCTION

Thank you for purchasing the Mitsubishi Electric MELSEC iQ-R series programmable controllers.

This manual describes the specifications, procedures before operation, wiring, and programming of the relevant product listed below.


Before using this product, please read this manual and the relevant manuals carefully and develop familiarity with the functions and performance of the MELSEC iQ-R series programmable controller to handle the product correctly.

When applying the program examples provided in this manual to an actual system, ensure the applicability and confirm that it will not cause system control problems.

Please make sure that the end users read this manual.

Point

Unless otherwise specified, this manual provides program examples in which the I/O numbers of X/Y0 to X/YF are assigned to the A/D converter module. Assign I/O numbers when applying the program examples to an actual system. For I/O number assignment, refer to the following.

 MELSEC iQ-R Module Configuration Manual



Relevant product

R60ADH4

COMPLIANCE WITH EMC AND LOW VOLTAGE DIRECTIVES

Method of ensuring compliance



To ensure that Mitsubishi Electric programmable controllers maintain EMC and Low Voltage Directives when incorporated into other machinery or equipment, certain measures may be necessary. Please refer to one of the following manuals.

-  MELSEC iQ-R Module Configuration Manual
-  Safety Guidelines (IB-0800525)

The CE mark on the side of the programmable controller indicates compliance with EMC and Low Voltage Directives.

Additional measures

To ensure that this product maintains EMC and Low Voltage Directives, please refer to one of the following manuals.

-  MELSEC iQ-R Module Configuration Manual
-  Safety Guidelines (IB-0800525)

MEMO

CONTENTS

SAFETY PRECAUTIONS	1
CONDITIONS OF USE FOR THE PRODUCT	10
INTRODUCTION	10
COMPLIANCE WITH EMC AND LOW VOLTAGE DIRECTIVES	11
RELEVANT MANUALS	14
TERMS	15
GENERIC TERMS AND ABBREVIATIONS	15
MANUAL PAGE ORGANIZATION	16
CHAPTER 1 PART NAMES	18
CHAPTER 2 SPECIFICATIONS	20
2.1 Performance Specifications	20
CHAPTER 3 FUNCTION LIST	22
CHAPTER 4 PROCEDURES BEFORE OPERATION	25
CHAPTER 5 SYSTEM CONFIGURATION	27
CHAPTER 6 WIRING	29
6.1 Terminal Block	29
6.2 External Wiring	31
CHAPTER 7 OPERATION EXAMPLES	33
7.1 Programming Procedure	33
7.2 Program Examples	34
CHAPTER 8 OFFSET/GAIN SETTING	42
8.1 Setting Procedure	42
APPENDICES	45
Appendix 1 I/O Conversion Characteristics	45
Appendix 2 Accuracy	48
Appendix 3 Input Response Time	49
Appendix 4 External Dimensions	50
INDEX	52
REVISIONS	54
WARRANTY	55
TRADEMARKS	56


RELEVANT MANUALS

Manual name [manual number]	Description	Available form
MELSEC iQ-R High Speed Analog-Digital Converter Module User's Manual (Startup) [SH-081580ENG] (this manual)	System configuration, specifications, procedures before operation, wiring, and operation examples of the high speed analog-digital converter module	Print book e-Manual PDF
MELSEC iQ-R Module Configuration Manual [SH-081262ENG]	Common information on the hardware configuration of all modules, overview of each system configuration, and specifications of the power supply module, base unit, SD memory card, and battery	Print book e-Manual PDF
MELSEC iQ-R High Speed Analog-Digital Converter Module User's Manual (Application) [SH-081581ENG]	Functions, parameter settings, I/O signals, buffer memory, and troubleshooting of the high speed analog-digital converter module	Print book e-Manual PDF
MELSEC iQ-R Programming Manual (Module Dedicated Instructions) [SH-081976ENG]	Dedicated instructions for the intelligent function modules	e-Manual PDF
MELSEC iQ-R Analog-Digital Converter Module/Digital-Analog Converter Module Function Block Reference [BCN-P5999-0375]	FBs of the A/D converter modules and D/A converter modules	e-Manual PDF
GX Works3 Operating Manual [SH-081215ENG]	System configuration, parameter settings, and online operations of GX Works3	e-Manual PDF
MELSEC iQ-R Online Module Change Manual [SH-081501ENG]	The online module change, which allows a module to be changed without stopping the system for MELSEC iQ-R series programmable controllers	Print book e-Manual PDF

This manual does not include detailed information on the following:

- General specifications
- Applicable CPU modules and the number of mountable modules
- Installation

For details, refer to the following.

 MELSEC iQ-R Module Configuration Manual

This manual does not include information on the module function blocks.

For details, refer to the Function Block Reference for the module used.



e-Manual refers to the Mitsubishi Electric FA electronic book manuals that can be browsed using a dedicated tool.

e-Manual has the following features:

- Required information can be cross-searched in multiple manuals.
- Other manuals can be accessed from the links in the manual.
- The hardware specifications of each part can be found from the product figures.
- Pages that users often browse can be bookmarked.
- Sample programs can be copied to an engineering tool.

TERMS

Unless otherwise specified, this manual uses the following terms.

Term	Description
Buffer memory	A memory in an intelligent function module for storing data (such as setting values and monitored values). For a CPU module, it refers to a memory for storing data (such as setting values and monitored values of the Ethernet function, data used for data communications of the multiple CPU system function).
Engineering tool	A tool used for setting up programmable controllers, programming, debugging, and maintenance
Global label	A label that is valid for all the program data when multiple program data are created in the project. The global label has two types: a module specific label (module label), which is generated automatically by GX Works3, and an optional label, which can be created for any specified device.
Module label	A label that represents one of memory areas (I/O signals and buffer memory areas) specific to each module in a given character string. For the module used, GX Works3 automatically generates this label, which can be used as a global label.
Normal mode	A mode used for normal A/D conversion. In the engineering tool, the item name of the mode is displayed as "Normal mode (A/D conversion process)".
Offset/gain setting mode	This mode is for configuring the offset/gain setting.
User range	An analog input range where any value can be set. This range can be set in the offset/gain setting.
Watchdog timer error	An error that occurs if the internal processing of the module is abnormal. Watchdog timer enables the module to monitor its own internal processing.

GENERIC TERMS AND ABBREVIATIONS

Unless otherwise specified, this manual uses the following generic terms and abbreviations.

Generic term/abbreviation	Description
A/D converter module	An abbreviation for the MELSEC iQ-R series high speed analog-digital converter module
Factory default setting	A generic term for analog input ranges of 0 to 10V, 0 to 5V, 1 to 5V, -10 to 10V, 0 to 20mA, 4 to 20mA, 1 to 5V (extended mode), and 4 to 20mA (extended mode). In the window of the engineering tool, the ranges of 4 to 20mA (extended mode) and 1 to 5V (extended mode) are displayed as follows. <ul style="list-style-type: none">• 4 to 20mA (Extension)• 1 to 5V (Extension)

MANUAL PAGE ORGANIZATION

In this manual, pages about functions, I/O signals, and buffer memory areas are organized and the symbols are used as shown below.

The following illustration is for explanation purpose only, and should not be referred to as an actual documentation.

Averaging processing

Common

The averaging processing is performed to the digital output value for each channel. The value after the averaging processing is performed is stored to the buffer memory area.

The following three types of averaging processing are provided.

- Time average
- Count average
- Moving average

Time average

Medium speed

Low speed

The A/D conversion is performed for the setting time and the averaging processing is performed to the total value except the maximum and minimum values. The value after the averaging processing is stored to the buffer memory area.

■Setting time
The setting range of the time (for averaging) is 1 to 5000ms.

■Processing times
The number of processing times within the setting time changes depending on the number of channels where the A/D conversion is enabled.

- Number of processing times (times) = Setting time/Sampling cycle

Ex.
The following table shows the processing times with the setting below.

Item	Setting
Operation mode	Normal mode (medium speed: 10μs/CH)
Number of channels where the A/D conversion is enabled	Four channels (CH1 to CH4)
Setting time	5ms

$8(\text{ms}) / (4 (\text{CH}) \times 0.01(\text{ms})) = 200 (\text{times})$
Conversion is processed 200 times and the mean value is output.

Count average

Medium speed

Low speed

The A/D conversion is performed for the set number of times and the averaging processing is performed to the total value except the maximum and minimum values. The value after the averaging processing is performed is stored to the buffer memory area.

The time taken for the mean value calculated through the average processing to be stored in the buffer memory area changes depending on the number of channels where the A/D conversion is enabled.

- Processing time = Set number of times × Sampling cycle

Ex.
The following table shows the processing time with the setting below.

Item	Setting
Operation mode	Normal mode (medium speed: 10μs/CH)
Number of channels where the A/D conversion is enabled	Four channels (CH1 to CH4)
Set number of times	Five times

$5 (\text{times}) \times (4 (\text{CH})) \times 10 (\mu\text{s}) = 200 (\mu\text{s})$
A mean value is output every 200μs.

1 FUNCTIONS
1.5 A/D Conversion Method **24**

① The following table lists the operation modes of the A/D converter module in which the corresponding functions and buffer memory areas can be used. Each icon indicates an operation mode as follows.

Icon	Description
<div style="border: 1px solid black; padding: 5px; width: fit-content; margin: 0 auto;">Common</div>	The corresponding functions and buffer memory areas can be used in all the operation modes.
<div style="border: 1px solid black; padding: 5px; width: fit-content; margin: 0 auto;">High speed</div>	The corresponding functions and buffer memory areas can be used in the normal mode (high speed: 1μs/CH).
<div style="border: 1px solid black; padding: 5px; width: fit-content; margin: 0 auto;">Medium speed</div>	The corresponding functions and buffer memory areas can be used in the normal mode (medium speed: 10μs/CH).
<div style="border: 1px solid black; padding: 5px; width: fit-content; margin: 0 auto;">Low speed</div>	The corresponding functions and buffer memory areas can be used in the normal mode (low speed: 20μs/CH).
<div style="border: 1px solid black; padding: 5px; width: fit-content; margin: 0 auto;">Simultaneous conversion</div>	The corresponding functions and buffer memory areas can be used in the simultaneous conversion mode (5μs/4CH).
<div style="border: 1px solid black; padding: 5px; width: fit-content; margin: 0 auto;">Synchronization</div>	The corresponding functions and buffer memory areas can be used in the inter-module synchronization mode.

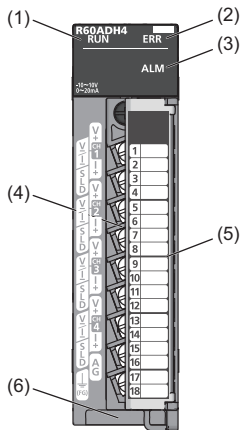
For details on each mode, refer to the following.

📖 MELSEC iQ-R High Speed Analog-Digital Converter Module User's Manual (Application)

MEMO

1 PART NAMES

This chapter describes the part names of the A/D converter module.



No.	Name	Description
(1)	RUN LED	Indicates the operating status of the module. On: Normal operation Flashing (1s cycles): In offset/gain setting mode Flashing (400ms cycles): Selected as a module for the online module change Off: 5V power supply interrupted, watchdog timer error occurred, or module replacement allowed in the process of the online module change
(2)	ERR LED	Indicates the error status of the module.*1 On: Error occurred Off: Normal operation
(3)	ALM LED	Indicates the alarm status of the module.*1 On: Warning (process alarm or rate alarm) issued Flashing: Input signal error detected Off: Normal operation
(4)	Terminal block	18-point screw terminal block for connecting input signal wires of external devices and others
(5)	Terminal block cover	Covers for preventing electric shock while the power is on
(6)	Production information marking	Shows the production information (16 digits) of the module.

*1 For details, refer to the following.

📖 MELSEC iQ-R High Speed Analog-Digital Converter Module User's Manual (Application)

2 SPECIFICATIONS

This chapter describes the performance specifications.

2.1 Performance Specifications

This section describes the performance specifications of the A/D converter module.

Item		Specifications																															
Number of analog input channels		4 channels																															
Analog input	Voltage	-10 to 10VDC (input resistance: 1M Ω)																															
	Current	0 to 20mADC (input resistance: 250 Ω)																															
Digital output		16-bit signed binary value (-32768 to 32767)																															
I/O characteristics, resolution *1		<table border="1"> <thead> <tr> <th>Analog input range</th> <th>Digital output value</th> <th>Resolution</th> </tr> </thead> <tbody> <tr> <td rowspan="6">Voltage</td> <td>0 to 10V</td> <td rowspan="3">0 to 32000</td> <td>312.5μV</td> </tr> <tr> <td>0 to 5V</td> <td>156.3μV</td> </tr> <tr> <td>1 to 5V</td> <td>125.0μV</td> </tr> <tr> <td>1 to 5V (extended mode)</td> <td>-8000 to 32000</td> <td>125.0μV</td> </tr> <tr> <td>-10 to 10V</td> <td rowspan="2">-32000 to 32000</td> <td>312.5μV</td> </tr> <tr> <td>User range setting</td> <td>125.0μV^{*2}</td> </tr> <tr> <td rowspan="5">Current</td> <td>0 to 20mA</td> <td rowspan="2">0 to 32000</td> <td>625.0nA</td> </tr> <tr> <td>4 to 20mA</td> <td>500.0nA</td> </tr> <tr> <td>4 to 20mA (extended mode)</td> <td>-8000 to 32000</td> <td>500.0nA</td> </tr> <tr> <td>User range setting</td> <td>-32000 to 32000</td> <td>500.0nA^{*2}</td> </tr> </tbody> </table>	Analog input range	Digital output value	Resolution	Voltage	0 to 10V	0 to 32000	312.5 μ V	0 to 5V	156.3 μ V	1 to 5V	125.0 μ V	1 to 5V (extended mode)	-8000 to 32000	125.0 μ V	-10 to 10V	-32000 to 32000	312.5 μ V	User range setting	125.0 μ V ^{*2}	Current	0 to 20mA	0 to 32000	625.0nA	4 to 20mA	500.0nA	4 to 20mA (extended mode)	-8000 to 32000	500.0nA	User range setting	-32000 to 32000	500.0nA ^{*2}
Analog input range	Digital output value	Resolution																															
Voltage	0 to 10V	0 to 32000	312.5 μ V																														
	0 to 5V		156.3 μ V																														
	1 to 5V		125.0 μ V																														
	1 to 5V (extended mode)	-8000 to 32000	125.0 μ V																														
	-10 to 10V	-32000 to 32000	312.5 μ V																														
	User range setting		125.0 μ V ^{*2}																														
Current	0 to 20mA	0 to 32000	625.0nA																														
	4 to 20mA		500.0nA																														
	4 to 20mA (extended mode)	-8000 to 32000	500.0nA																														
	User range setting	-32000 to 32000	500.0nA ^{*2}																														
	Accuracy (accuracy of the maximum digital output value) ^{*3}	Ambient temperature 25 \pm 5 $^{\circ}$ C	Within \pm 0.1% (\pm 32 digit)																														
Ambient temperature 0 to 55 $^{\circ}$ C		Within \pm 0.2% (\pm 64 digit)																															
Operation mode (sampling cycle) ^{*4}		Normal mode (high speed: 1 μ s/CH) Normal mode (medium speed: 10 μ s/CH) Normal mode (low speed: 20 μ s/CH) Simultaneous conversion mode (5 μ s/4CH)																															
Input band ^{*5}		60kHz (Normal mode (high speed: 1 μ s/CH)) 40kHz (Normal mode (medium speed: 10 μ s/CH)) 20kHz (Normal mode (low speed: 20 μ s/CH)) 60kHz (Simultaneous conversion mode (5 μ s/4CH))																															
Input response time ^{*6}		20 μ s maximum																															
Absolute maximum input		Voltage: \pm 15V, Current: 30mA ^{*7}																															
Number of offset/gain settings ^{*8}		10000 times maximum																															
Isolation method		Between I/O terminals and programmable controller power supply: Photocoupler Between input channels: Non-isolation																															
Withstand voltage		Between I/O terminals and programmable controller power supply: 500VACrms for 1 minute																															
Isolation resistance		Between I/O terminals and programmable controller power supply: 10M Ω or higher, at 500VDC																															
Number of occupied I/O points		16 points (I/O assignment: Intelligent 16 points)																															
External interface		18-point terminal block																															
Applicable wire size		0.3 to 0.75mm ² (22 to 18 AWG)																															
Applicable solderless terminal		R1.25-3 (solderless terminal with an insulation sleeve cannot be used)																															
Internal current consumption (5VDC)		0.73A																															
External dimensions	Height	106mm (base unit mounting side: 98mm)																															
	Width	27.8mm																															
	Depth	131mm																															
Weight		0.20kg																															

*1 For details on the I/O conversion characteristics, refer to the following.



 Page 45 I/O Conversion Characteristics

- *2 Maximum resolution in the user range setting.
- *3 Except for the conditions under noise influence.
- *4 The module becomes more susceptible to noise while operating in the operation mode with faster sampling cycle. For measures to reduce noise, refer to the MELSEC iQ-R Module Configuration Manual. If the module is still affected by noise after the measures have been taken, use averaging processing, primary delay filter, and digital filter. For how to use them, refer to the MELSEC iQ-R High Speed Analog-Digital Converter Module User's Manual (Application).
- *5 The frequency where the amplitude ratio is -3dB when the sine wave with the amplitude of 5V is input.
- *6 The time until an analog input signal reaches the A/D converter in the A/D converter module.
- *7 This current value is an instantaneous value at which no breakdown occurs in the internal resistance of the module.
- *8 A count more than 10000 times causes Number of writes to offset/gain settings reach limit error (error code: 1080H).

3 FUNCTION LIST

The following table lists the functions of the A/D converter module. For details on the functions, refer to the following.
 MELSEC iQ-R High Speed Analog-Digital Converter Module User's Manual (Application)

Item		Description	
Range switching function		Allows switching the input range of an analog input for each channel. Switching the range makes it possible to change the I/O conversion characteristics.	
A/D conversion enable/disable setting function		Controls whether to enable or disable the A/D conversion for each channel.	
A/D conversion method	Sampling processing	Converts an analog input value every sampling cycle and stores it as a digital output value in the buffer memory area. The conversion is performed every 5 μ s (fixed) in the simultaneous conversion mode, or performed every inter-module synchronization cycle in the inter-module synchronization mode.	
	Averaging processing	Time average	Executes A/D conversion for a set time, and averages the total value excluding the maximum value and the minimum value. The average value is stored in the buffer memory area. The number of processing times within the set time changes depending on the number of channels where the A/D conversion is enabled.
		Count average	Executes A/D conversion for a set number of times, and averages the total value excluding the maximum value and the minimum value. The average value is stored in the buffer memory area. The time taken to store the average value obtained by the average processing in the buffer memory area changes depending on the number of channels where the A/D conversion is enabled.
		Moving average	Averages digital output values taken every sampling cycle for a specified number of times, and stores the average value in the buffer memory area. Because the target range for averaging processing is moved in response to every sampling processing, the latest digital output value can be obtained.
	Primary delay filter		Smooths the transient noise of analog input depending on the set time constant. The smoothed digital output value is stored in the buffer memory area.
	Digital filter	Low pass filter	Removes the unnecessary high-frequency components in a signal, and stores a digital output value in the buffer memory area.
		High pass filter	Removes the unnecessary low-frequency components in a signal, and stores a digital output value in the buffer memory area.
Band pass filter		Passes only necessary frequency in a signal removing other unnecessary frequencies, and stores a digital output value in the buffer memory area.	
Scaling function		Performs scale conversion on digital output values within a specified range between a scaling upper limit value and a scaling lower limit value. This function reduces the time and effort to create a program of the scale conversion.	
Shift function		Adds (shifts) a set conversion value shift amount to a digital output value and stores the result in the buffer memory area. The change in the conversion value shift amount is reflected to the digital operation value on a real-time basis. Therefore, fine adjustment can be easily performed when the system starts.	
Digital clipping function		Fixes a possible digital operation value to the maximum digital output value or the minimum digital output value when an input current or voltage exceeds the input range.	
Difference conversion function		Subtracts a difference conversion reference value from a digital operation value and stores the acquired value in the buffer memory area.	
Maximum value/minimum value hold function		Stores the maximum and minimum values of digital operation values to the buffer memory area for each channel.	
Warning output function	Process alarm	Outputs a warning when a digital operation value enters the preset warning output range.	
	Rate alarm	Outputs a warning when the change rate of a digital output value is equal to or larger than the rate alarm upper limit value, or the rate is equal to or smaller than the rate alarm lower limit value.	
Input signal error detection function		Detects an analog input value that is above or below the set range.	

Item		Description
Logging function	Normal logging function	Logs (records) up to 90000 digital output values or digital operation values. Logging can be performed under various conditions with the logging hold, level trigger, or logging read function.
	High speed logging function	Logs (records) up to 90000 points of digital operation values. The A/D conversion performed at 1 μ s cycle (shortest cycle) enables the module to log minute state changes of external devices that cannot be obtained with the conversion speed of the normal logging function.
	Continuous logging function	Logs digital output values in four channels simultaneously and transfers the logging data to the CPU module continuously without stopping the logging operation. The data that have been converted from analog to digital at high speed (5 μ s cycle at a maximum) and in four channels simultaneously can be continuously collected. This enables the module to collect data for signal analysis under the condition that the module is connected to sensors having input characteristics of the high-frequency band.
	High speed continuous logging function	Logs digital operation values at 1 μ s cycle, which is the shortest cycle, and continuously transfers logging data to the CPU module without stopping logging. Compared to the continuous logging function, this function is more suitable for measurement since it can obtain analog values that are changing at high speed.
Inter-module synchronization function		Allows the A/D conversion values to be held simultaneously among multiple modules in which the inter-module synchronization function is active.
Interrupt function		Executes an interrupt program of the CPU module when an interrupt factor such as an input signal error or warning output is detected.
Error history function		Records up to the 16 errors and alarms that occurred in the A/D converter module to store them into the buffer memory areas.
Event history function		Collects the errors and alarms that occurred and the operations executed in the A/D converter module as event information into the CPU module.
Offset/gain setting		Corrects errors in digital output values.
Backing up, saving, and restoring offset/gain values		Makes it possible to back up, save, and restore the offset/gain values of the user range setting.
Online module change		Allows module replacement without stopping the system. For the procedure of the online module change, refer to the following.  MELSEC iQ-R Online Module Change Manual
Firmware update function*1		Enables users to update the firmware versions of modules by using firmware update files. (For the firmware update file, please consult your local Mitsubishi representative.) For details on this function, refer to the following.  MELSEC iQ-R Module Configuration Manual

*1 The firmware update function cannot be used for the module in offset/gain setting mode.

Availability in each operation mode

The functions that can be used depend on the operation mode of the A/D converter module. The following table lists the availability of each function in each operation mode.

○: Available, ×: Not available

Item		Operation mode				
		High speed	Medium speed	Low speed	Simultaneous conversion	Synchronization
Range switching function		○	○	○	○	○
A/D conversion enable/disable setting function		○	○	○	○	○
A/D conversion method	Sampling processing	○	○	○	○	○
	Time average	×	○	○	×	×
	Count average	×	○	○	×	×
	Moving average	○	○	○	○	○
	Primary delay filter	×	○	○	×	×
	Low pass filter	×	○	○	×	×
	High pass filter	×	○	○	×	×
	Band pass filter	×	○	○	×	×
Scaling function		○	○	○	×	×
Shift function		×	○	○	×	×
Digital clipping function		×	○	○	×	×
Difference conversion function		×	○	○	×	×
Maximum value/minimum value hold function		×	○	○	○	○
Warning output function	Process alarm	×	○	○	○	○
	Rate alarm	×	○	○	×	×
Input signal error detection function		×	○	○	○	×
Logging function	Normal logging function	×	×	○	×	×
	High speed logging function	○	×	×	×	×
	Continuous logging function	×	×	×	○	○
	High speed continuous logging function	○	×	×	×	×
Inter-module synchronization function		×	×	×	×	○
Interrupt function		○	×	○	○	○
Error history function		○	○	○	○	○
Event history function		○	○	○	○	○
Offset/gain setting		×	○	○	×	×
Backing up, saving, and restoring offset/gain values		×	○	○	×	×
Online module change		○	○	○	○	○
Firmware update function		○	○	○	○	○

4 PROCEDURES BEFORE OPERATION

This chapter describes the procedures before operation.

1. Mounting a module

Mount the A/D converter module in any desired configuration.

2. Wiring

Perform wiring of external devices to the A/D converter module.

☞ Page 31 External Wiring

3. Adding a module

Add the A/D converter module to a module configuration by using the engineering tool. For details, refer to the following.

📖 GX Works3 Operating Manual

4. Parameter setting

Set the parameters of the A/D converter module by using the engineering tool. For details, refer to the following.

📖 MELSEC iQ-R High Speed Analog-Digital Converter Module User's Manual (Application)

5. Offset/gain setting

Perform the offset/gain setting to set a user range, if necessary.

☞ Page 42 OFFSET/GAIN SETTING

6. Programming


Create a program. For details, refer to the following.

☞ Page 33 OPERATION EXAMPLES

MEMO

5 SYSTEM CONFIGURATION

For system configurations using the MELSEC iQ-R series modules, CPU modules that can be used with the A/D converter module, and the number of mountable modules, refer to the following.

 MELSEC iQ-R Module Configuration Manual

MEMO

6 WIRING

This chapter describes the wiring of the A/D converter module.

6.1 Terminal Block

Precautions

Tighten the module fixing screws and others within the specified torque range.

Screw type	Tightening torque range
Module fixing screw (M3) ^{*1}	0.37 to 0.48N-m
Terminal screw (M3)	0.42 to 0.58N-m
Terminal block mounting screw (M3.5)	0.66 to 0.89N-m

*1 The hook on the top of the module allows the module to be fixed to a base unit easily. In a place where there is a lot of vibration, however, fixing with module fixing screws is recommended.

The following table lists an applicable solderless terminal to be connected to the terminal block. When wiring, use the applicable wire and tightening torque in the table. Use UL listed solderless terminals and, for processing, use the tools recommended by their manufacturer. Note that a solderless terminal with an insulation sleeve cannot be used.

Solderless terminal		Wire			
Model	Applicable tightening torque	Diameter	Type	Material	Temperature rating
R1.25-3	0.42 to 0.58N-m	0.3 to 0.75mm ² (22 to 18 AWG)	Stranded wire	Copper	75°C or greater

Signal names of the terminal block

The following table shows signal names of the terminal block.

Terminal block	Terminal number	Signal name
	1	CH1 V+
	2	CH1 V-/I-
	3	CH1 I+
	4	SLD
	5	CH2 V+
	6	CH2 V-/I-
	7	CH2 I+
	8	SLD
	9	CH3 V+
	10	CH3 V-/I-
	11	CH3 I+
	12	SLD
	13	CH4 V+
	14	CH4 V-/I-
	15	CH4 I+
	16	SLD
	17	AG
	18	FG

Point 

Terminal blocks that have been used on MELSEC-Q series analog-digital converter modules can be used just the way they are. The terminal layout is the same as the MELSEC-Q series high speed analog-digital converter modules (Q64ADH).

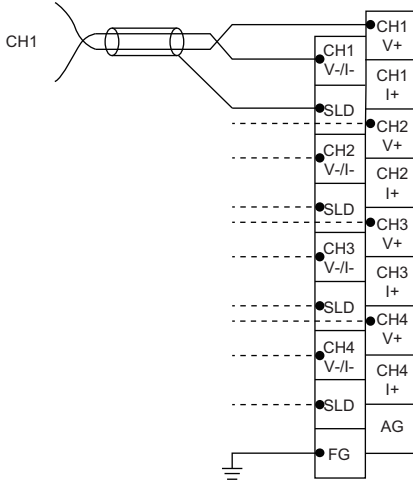
The terminal blocks for MELSEC-L series analog-digital converter modules, however, cannot be used because of the shape difference.

6.2 External Wiring

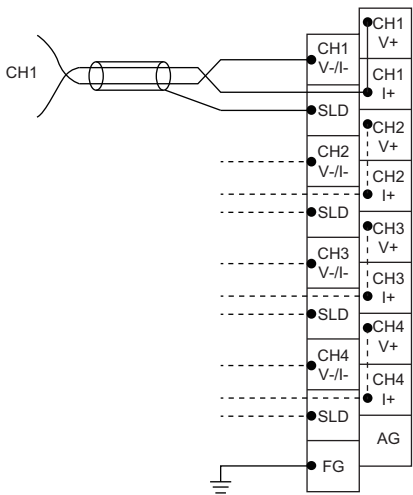
Wiring to the terminal block

The following figures show wiring to the terminal block.

- For the voltage input



- For the current input

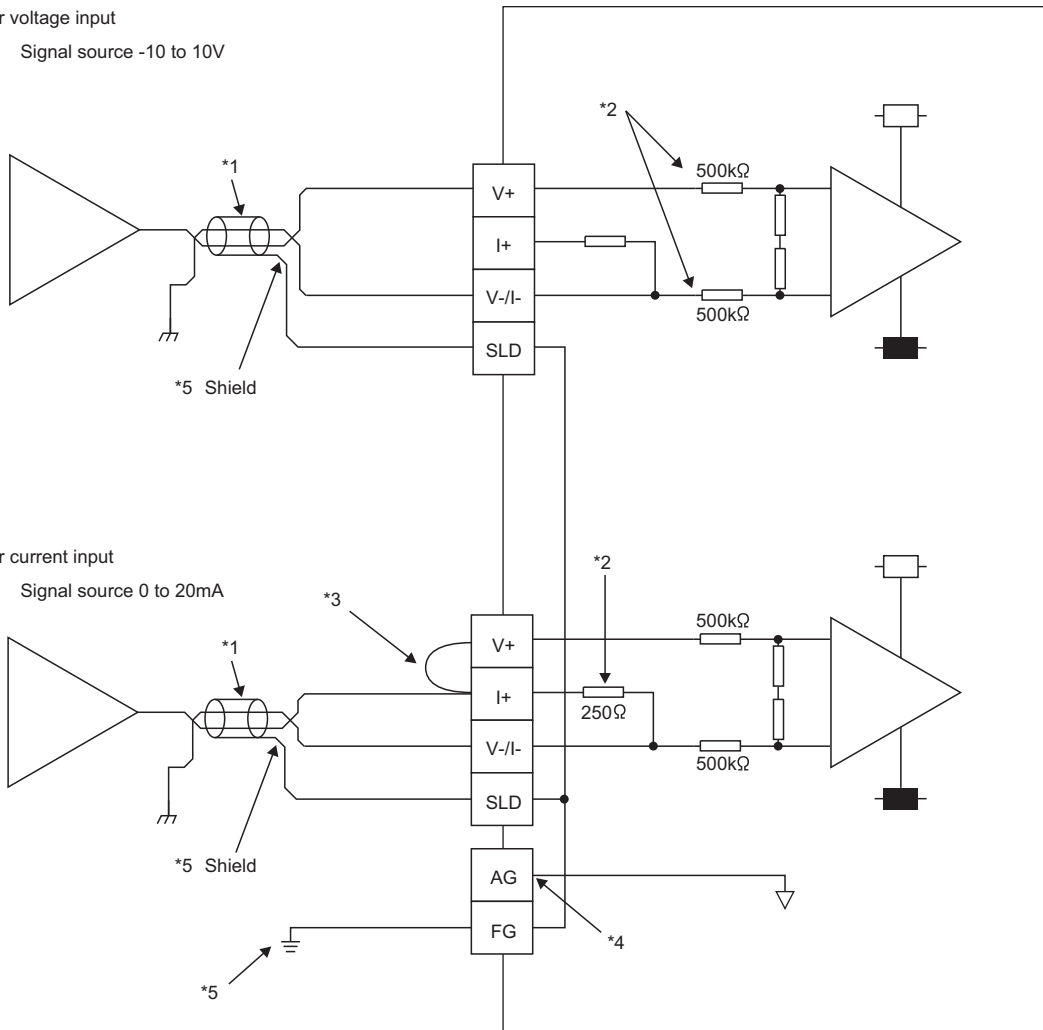


External wiring examples

The following figures show the examples of external wiring.

For voltage input

Signal source -10 to 10V



*1 For the wire, use the 2-core twisted cable.

*2 This indicates the input resistance of the A/D converter module.

*3 For the current input, be sure to connect the terminals (V+) and (I+).

*4 Connect the AG terminal and the GND of the external device if there is a potential difference between them.

*5 Be sure to connect the shield wire of cables on each channel to the SLD terminal, and ground the FG terminal.

Point

Ground the FG terminal of the power supply module.

If the circuit is left open between terminals of unused channels, enabling A/D conversion may generate an undefined digital value. To prevent this phenomenon, take any of the following measures:

- Set the A/D conversion enable/disable setting in the unused channels to disable the A/D conversion. Note that in the normal mode, changing the A/D conversion enable/disable setting from A/D conversion enable to A/D conversion disable causes a shorter sampling cycle.
- Short-circuit the input terminals (V+) and (V-) in the unused channels.

7 OPERATION EXAMPLES

This chapter describes the programming procedure and the basic program of the A/D converter module.

7.1 Programming Procedure

Take the following steps to create a program for running the A/D converter module:

1. Set parameters.


 Page 34 Parameter settings

2. Create a program.

 Page 39 Program examples

Point

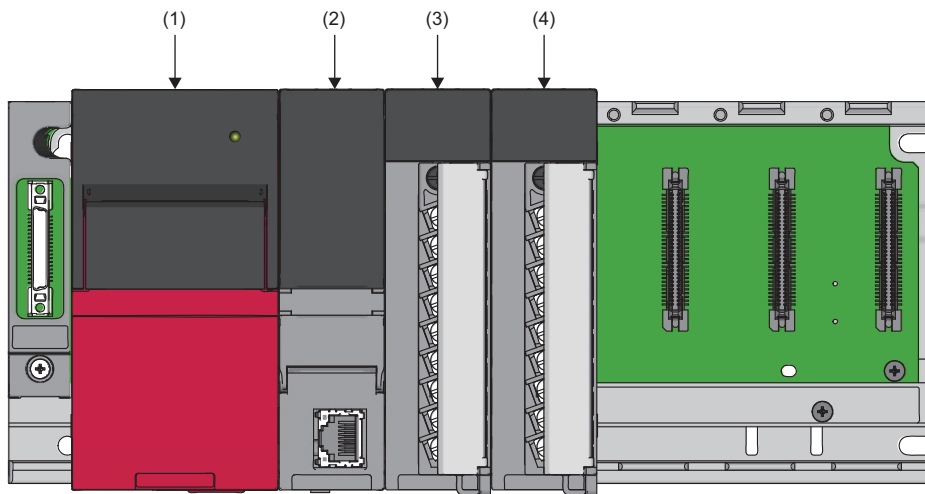
Using function blocks (FBs) reduces load at programming and improves the readability of programs. For details on the function blocks, refer to the following.

 MELSEC iQ-R Analog-Digital Converter Module/Digital-Analog Converter Module Function Block Reference

7.2 Program Examples

System configuration

The following figure shows an example of the system configuration.



- (1) Power supply module (R61P)
- (2) CPU module (R04CPU)
- (3) A/D converter module (R60ADH4)
- (4) Input module (RX10)

Conditions in the program

This program reads digital output values from the A/D converter module's CH1 to CH4 where A/D conversion is enabled. The A/D conversion takes place in CH1 and CH4 by means of sampling processing; in CH2 by means of averaging processing for 50 samples; and in CH3 by means of moving average for 10 samples.

Parameter settings

Perform initial settings in the parameter settings of the engineering tool. The auto refresh setting does not need to be changed here.

Function	Setting item	CH1	CH2	CH3	CH4
Range switching function	Input range setting	-10 to 10V	0 to 10V	0 to 20mA	4 to 20mA
Operation mode setting function	Operation mode setting	Normal mode (low speed: 20 μ s/CH)			
A/D conversion enable/disable setting function	A/D conversion enable/disable setting	A/D conversion enable	A/D conversion enable	A/D conversion enable	A/D conversion enable
A/D conversion method	Averaging process specification	Sampling processing	Count average	Moving average	Sampling processing
	Time average/Count average/Moving average/Primary delay filter constant setting	—	50 times	10 times	—
Scaling function	Scaling enable/disable setting	—	—	Enable	—
	Scaling upper limit value	—	—	16000	—
	Scaling lower limit value	—	—	2000	—
Shift function	Conversion value shift amount	0	0	2000	0

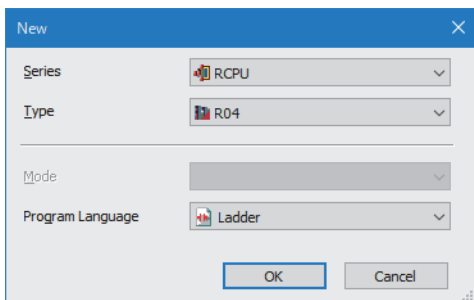
Function	Setting item	CH1	CH2	CH3	CH4
Warning output function (process alarm)	Warning output setting (Process alarm)	Disable	Enable	Disable	Disable
	Process alarm upper upper limit value	—	32000	—	—
	Process alarm upper lower limit value	—	28000	—	—
	Process alarm lower upper limit value	—	4000	—	—
	Process alarm lower lower limit value	—	0	—	—
Warning output function (rate alarm)	Warning output setting (Rate alarm)	Enable	Disable	Disable	Disable
	Rate alarm warning detection cycle setting	5 times	—	—	—
	Rate alarm upper limit value	25.0%	—	—	—
	Rate alarm lower limit value	-5.0%	—	—	—
Input signal error detection function	Input signal error detection setting	Upper and lower limit detection	Disable	Disable	Disable
	Input signal error detection lower limit setting value	5.0%	—	—	—
	Input signal error detection upper limit setting value	10.0%	—	—	—

Set default values for the parameters other than the above.

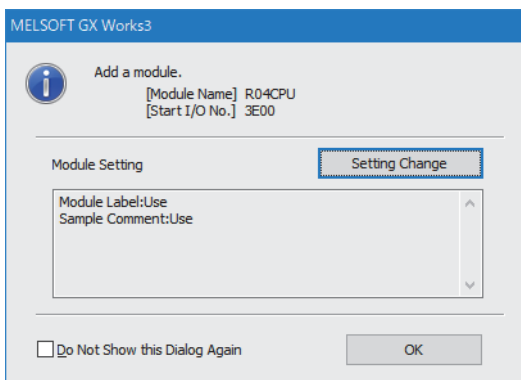
Operating procedure

1. Set the window as follows to create the project.

 [Project] ⇒ [New]

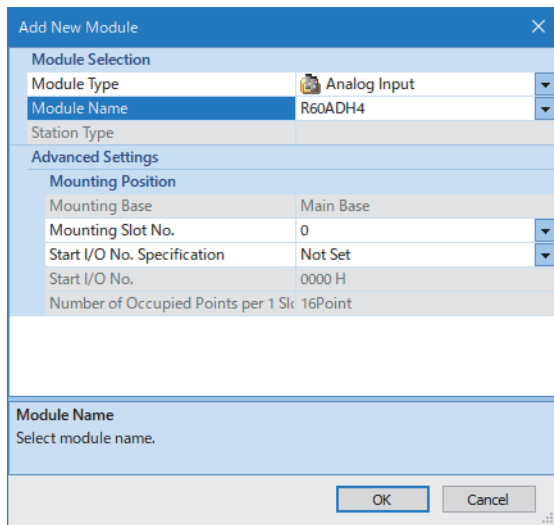


2. Click the [Setting Change] button and set the module to use the module label.
3. Click the [OK] button in the following window to add the module label of the CPU module.

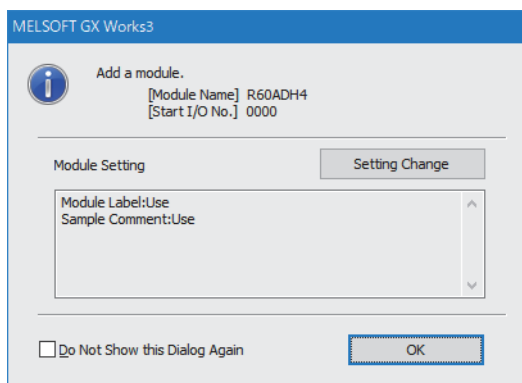


4. Add the A/D converter module with the window set as follows.

[Navigation window] ⇒ [Parameter] ⇒ [Module Information] ⇒ Right-click ⇒ [Add New Module]

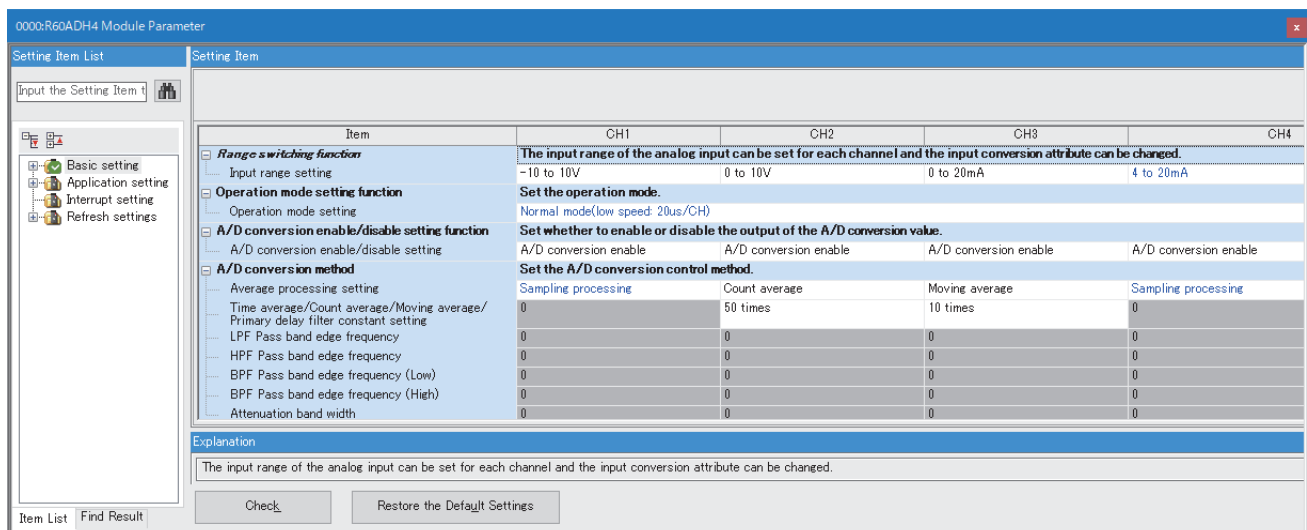


5. Set the window as follows to add the module label of the A/D converter module.



6. Set "Basic setting" of "Module Parameter" of the A/D converter module as shown below.

[Navigation window] ⇒ [Parameter] ⇒ [Module Information] ⇒ [R60ADH4] ⇒ [Module Parameter] ⇒ [Basic setting]



7. Set "Application setting" of "Module Parameter" of the A/D converter module as shown below.

[Navigation window] ⇒ [Parameter] ⇒ [Module Information] ⇒ [R60ADH4] ⇒ [Module Parameter] ⇒ [Application setting]

Item	CH1	CH2	CH3	CH4
Scaling function Configure the setting for the scaling at the A/D conversion.				
Scaling enable/disable setting	Disable	Disable	Enable	Disable
Scaling upper limit value	0	0	16000	0
Scaling lower limit value	0	0	2000	0
Shift function Configure the setting for the shift function at the A/D conversion.				
Conversion value shift amount	0	0	2000	0
Digital clipping function Configure the setting for the digital clipping function at the A/D conversion.				
Digital clipping enable/disable setting	Disable	Disable	Disable	Disable
Warning output function(Process alarm) Set a warning at the A/D conversion.				
Warning output setting(Process alarm)	Disable	Enable	Disable	Disable
Process alarm upper upper limit value	0	32000	0	0
Process alarm upper lower limit value	0	28000	0	0
Process alarm lower upper limit value	0	4000	0	0
Process alarm lower lower limit value	0	0	0	0
Warning output function(Rate alarm) Set a warning at the A/D conversion.				
Warning output function(Rate alarm)	Enable	Disable	Disable	Disable
Rate alarm detection cycle setting	5 times	0 times	0 times	0 times
Rate alarm upper limit value	25.0 %	0.0 %	0.0 %	0.0 %
Rate alarm lower limit value	-5.0 %	0.0 %	0.0 %	0.0 %
Input signal error detection function Configure the setting for the input signal at the A/D conversion.				
Input signal error detection setting	Upper/Lower limit detectic	Disable	Disable	Disable
Input signal error detection lower limit setting value	5.0 %	5.0 %	5.0 %	5.0 %
Input signal error detection upper limit setting value	10.0 %	5.0 %	5.0 %	5.0 %
Input signal error detection auto clear enable/disable setting	Disable			
Logging function Configure the setting for the logging function at the A/D conversion.				
Continuous logging function Configure the setting for the continuous logging function at the A/D conversion.				
Inter-module synchronization function A/D conversion function in accordance with the inter-module synchronization cycle.				
Online module change The module can be changed without the system being stopped.				

8. Write the set parameters to the CPU module on the master station. Then, reset the CPU module or power off and on the system.


[Online] ⇒ [Write to PLC]

Label settings

GX Works3 provides functions that support the creation of a program.

The following table lists the module labels and global labels used for the program examples in this section.

There is no need to change the settings of the module labels. For details on the global labels, refer to the following.

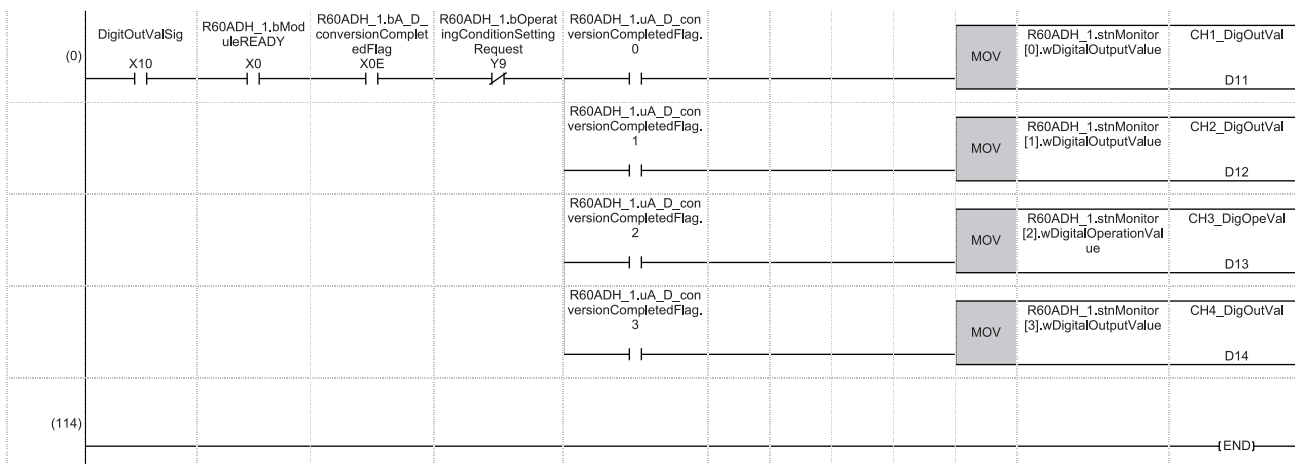
 MELSEC iQ-R Programming Manual (Program Design)

Classification	Label name	Description	Device	
Module label	R60ADH_1.bModuleREADY	Module READY	X0	
	R60ADH_1.bInputSignalErrorDetectionSignal	Input signal error detection signal	X0C	
	R60ADH_1.bMaxValueMinValueResetCompletedFlag	Maximum value/minimum value reset completed flag	X0D	
	R60ADH_1.bA_D_conversionCompletedFlag	A/D conversion completed flag	X0E	
	R60ADH_1.bErrorFlag	Error flag	X0F	
	R60ADH_1.bOperatingConditionSettingRequest	Operating condition setting request	Y9	
	R60ADH_1.bMaxValueMinValueResetRequest	Maximum value/minimum value reset request	Y0D	
	R60ADH_1.uA_D_conversionCompletedFlag.0	CH1 A/D conversion completed flag	—	
	R60ADH_1.stnMonitor[0].wDigitalOutputValue	CH1 Digital output value	—	
	R60ADH_1.uA_D_conversionCompletedFlag.1	CH2 A/D conversion completed flag	—	
	R60ADH_1.stnMonitor[1].wDigitalOutputValue	CH2 Digital output value	—	
	R60ADH_1.uA_D_conversionCompletedFlag.2	CH3 A/D conversion completed flag	—	
	R60ADH_1.stnMonitor[2].wDigitalOperationValue	CH3 Digital operation value	—	
	R60ADH_1.uA_D_conversionCompletedFlag.3	CH4 A/D conversion completed flag	—	
	R60ADH_1.stnMonitor[3].wDigitalOutputValue	CH4 Digital output value	—	
	R60ADH_1.stnMonitor[2].wMaxValue	CH3 Maximum value	—	
	R60ADH_1.stnMonitor[2].wMinValue	CH3 Minimum value	—	
	R60ADH_1.uWarningOutputFlagProcessAlarmUpperLimit.1	CH2 Warning output flag (Process alarm upper limit)	—	
	R60ADH_1.uWarningOutputFlagProcessAlarmLowerLimit.1	CH2 Warning output flag (Process alarm lower limit)	—	
	R60ADH_1.uWarningOutputFlagRateAlarmUpperLimit.0	CH1 Warning output flag (Rate alarm upper limit)	—	
R60ADH_1.uWarningOutputFlagRateAlarmLowerLimit.0	CH1 Warning output flag (Rate alarm lower limit)	—		
R60ADH_1.bInputSignalErrorDetectionFlag.0	CH1 Input signal error detection flag	—		
Labels to be defined	Define global labels as shown below:			
	Label Name	Data Type	Class	Assign (Device/Label)
1	DigitOutValSig	Bit	VAR_GLOBAL	X10
2	CH1_DigOutVal	Word [Unsigned]/Bit String [16-bit]	VAR_GLOBAL	D11
3	CH2_DigOutVal	Word [Unsigned]/Bit String [16-bit]	VAR_GLOBAL	D12
4	CH3_DigOpeVal	Word [Unsigned]/Bit String [16-bit]	VAR_GLOBAL	D13
5	CH4_DigOutVal	Word [Unsigned]/Bit String [16-bit]	VAR_GLOBAL	D14
6	MaxMinReadSig	Bit	VAR_GLOBAL	X11
7	MaxMinResetSig	Bit	VAR_GLOBAL	X12
8	CH3_DigMaxVal	Word [Unsigned]/Bit String [16-bit]	VAR_GLOBAL	D15
9	CH3_DigMinVal	Word [Unsigned]/Bit String [16-bit]	VAR_GLOBAL	D16
10	CH2_ProcAlmUpLimit	Bit	VAR_GLOBAL	F0
11	CH2_ProcAlmLowLimit	Bit	VAR_GLOBAL	F1
12	CH1_RateAlmUpLimit	Bit	VAR_GLOBAL	F2
13	CH1_RateAlmLowLimit	Bit	VAR_GLOBAL	F3
14	CH1_InputSigErr	Bit	VAR_GLOBAL	F4
15	ErrOperationEN	Bit	VAR_GLOBAL	
16	ErrResetSig	Bit	VAR_GLOBAL	X13
17	ErrOperationENO	Bit	VAR_GLOBAL	
18	ErrOperationOK	Bit	VAR_GLOBAL	
19	UnitErrFlg	Bit	VAR_GLOBAL	
20	UnitErrCode	Word [Unsigned]/Bit String [16-bit]	VAR_GLOBAL	
21	UnitAlarmCode	Word [Unsigned]/Bit String [16-bit]	VAR_GLOBAL	

Program examples

Program example 1

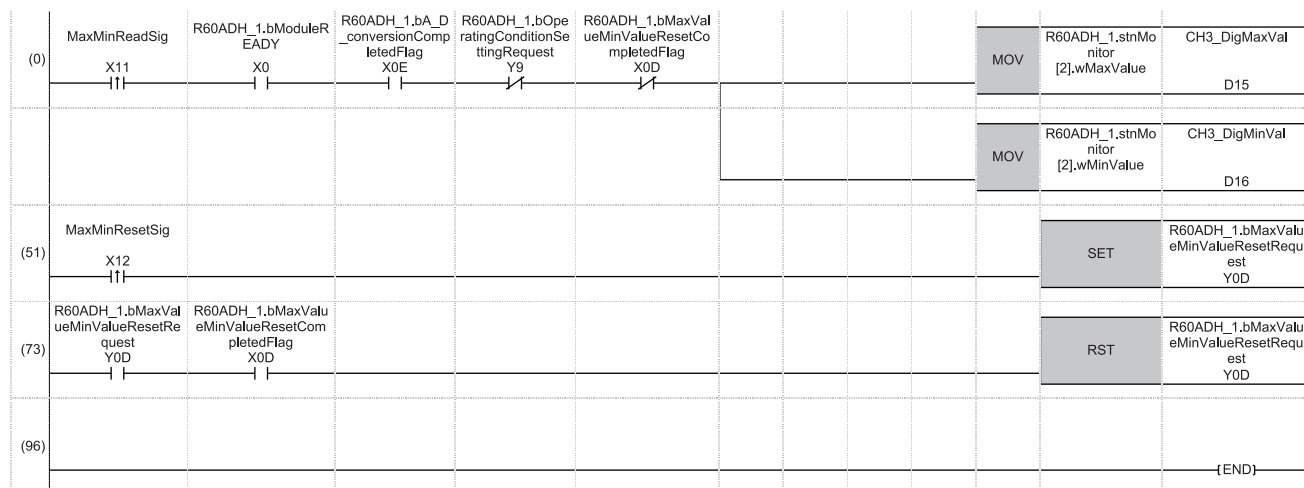
This program is an example to read and save the digital output values of CH1, CH2, and CH4, and the digital operation value of CH3.



(0) CH1 Digital output value, CH2 Digital output value, CH3 Digital operation value, and CH4 Digital output value are to be read.

Program example 2

This program is an example to read the maximum and minimum values of CH3, which in turn are cleared.



(0) CH3 Maximum value and CH3 Minimum value are to be read.

(51)'Maximum value/minimum value reset request' (YD) is to be turned on.

(73)'Maximum value/minimum value reset request' (YD) is to be turned off.

■ Program example 3

This program is an example to perform the processing at the time when a process alarm upper/lower limit warning is issued in CH2.

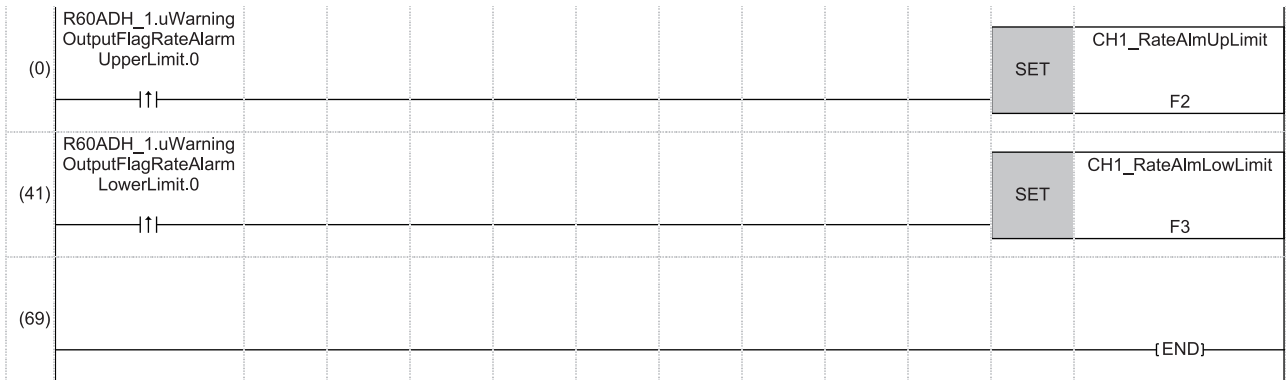
(0)	R60ADH_1.uWarning OutputFlagProcessAlarmUpperLimit.1																		SET	CH2_ProcAlmUpLimit	
																				F0	
(43)	R60ADH_1.uWarning OutputFlagProcessAlarmLowerLimit.1																			SET	CH2_ProcAlmLowLimit
																					F1
(72)																					
																					{END}

(0) The processing at the time when a process alarm upper limit warning is issued in CH2 is to be performed.

(43) The processing at the time when a process alarm lower limit warning is issued in CH2 is to be performed.

Program example 4

This program is an example to perform the processing at the time when a rate alarm upper/lower limit warning is issued in CH1.

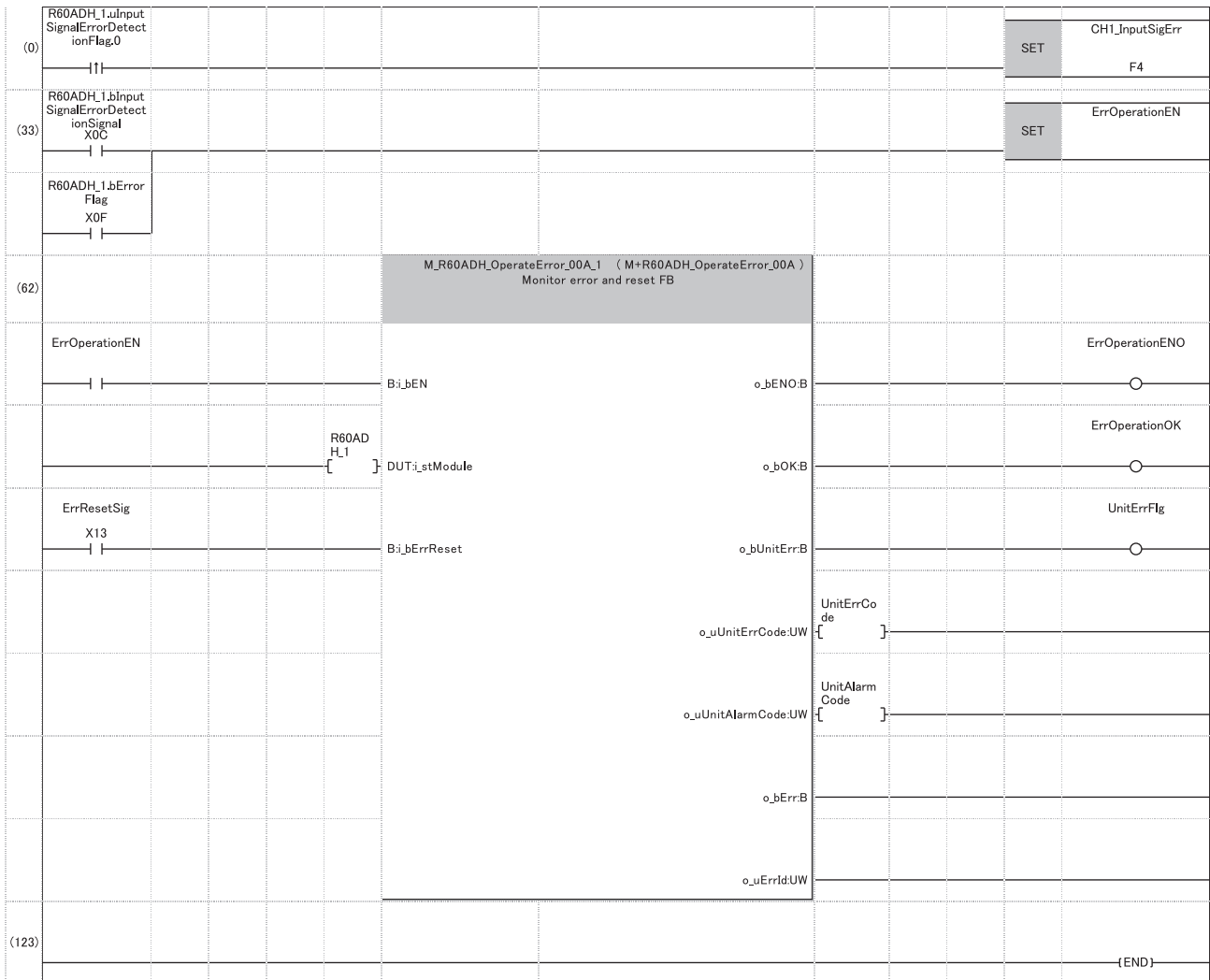


(0) The processing at the time when a rate alarm upper limit warning is issued in CH1 is to be performed.

(41)The processing at the time when a rate alarm lower limit warning is issued in CH1 is to be performed.

Program example 5

This program is an example to display the latest error code if an input signal error of CH1 is detected or an error occurs. After that, the program clears the error flag and the stored error code.



(0) The processing at the time when an input signal error is detected in CH1 is to be performed.

(33)Error manipulation start flag is to be turned on.

8 OFFSET/GAIN SETTING

Using the user range setting requires setting the offset and gain values.

Access the offset/gain setting window in the engineering tool to set the offset and gain values.

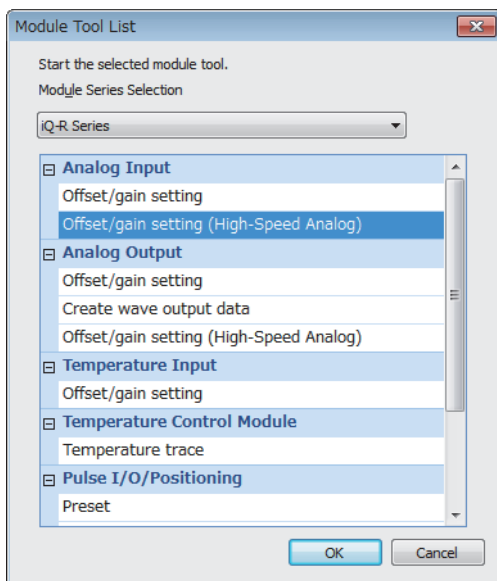
Restriction

The offset/gain setting is disabled when the operation mode is set to the normal mode (high speed: 1 μ s/CH), simultaneous conversion mode, or inter-module synchronization mode. Set the normal mode (medium speed: 10 μ s/CH), normal mode (low speed: 20 μ s/CH), or offset/gain setting mode in advance and set the offset and gain values.

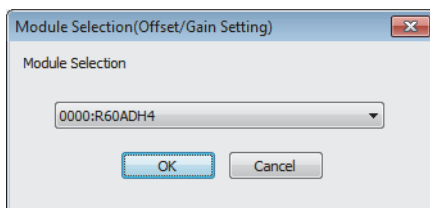
8.1 Setting Procedure

The procedure for the offset/gain setting of the A/D converter module is as follows:

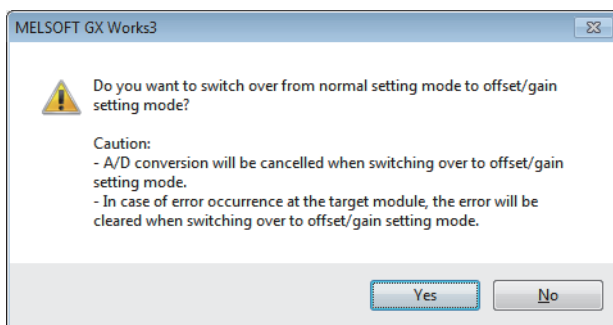
[Tool] ⇒ [Module Tool List]



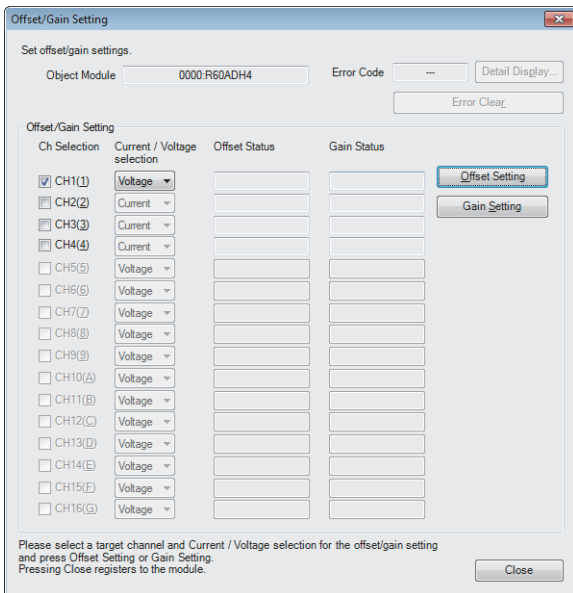
1. In "Analog Input", select "Offset/gain setting (High-Speed Analog)" and click the [OK] button.



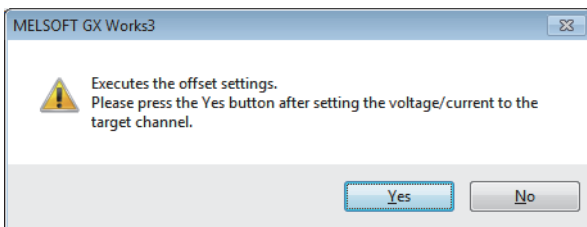
2. Select the target module for the offset/gain setting, and click the [OK] button.



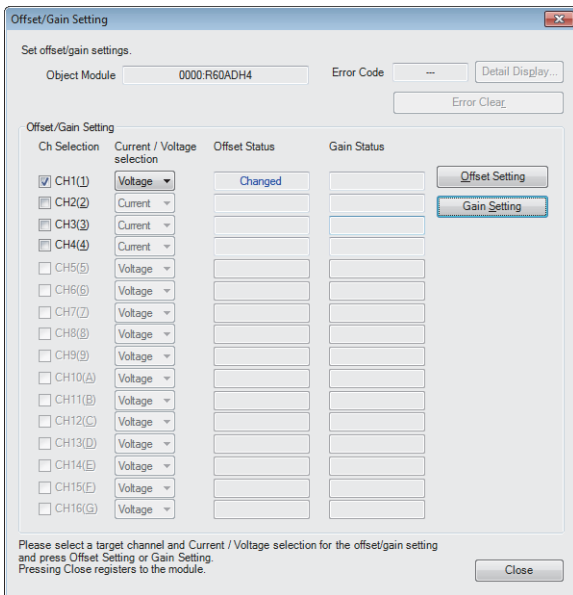
3. Click the [Yes] button.



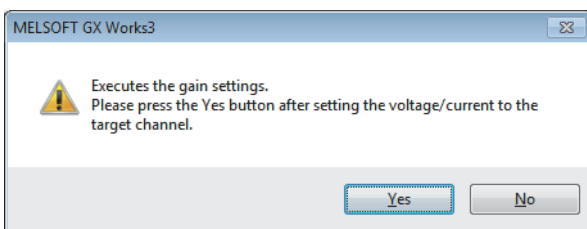
4. Mark the checkbox of the channel where offset and gain values are to be set.
5. Select the voltage or current and click the [Offset Setting] button.



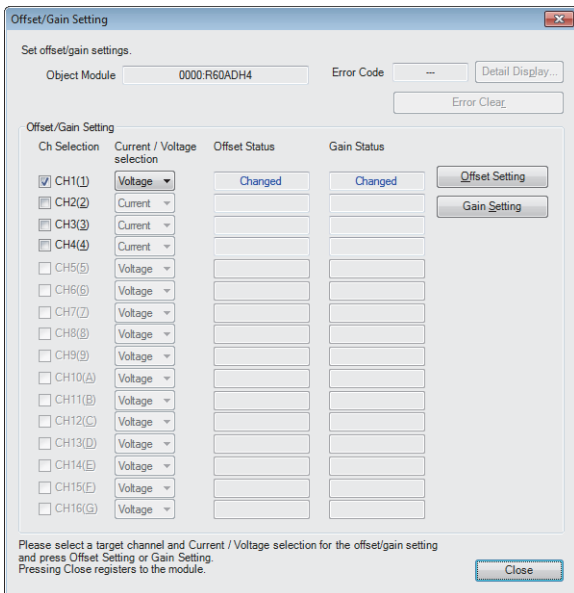
6. Apply the offset voltage or current to the terminal of the corresponding channel, and click the [Yes] button.



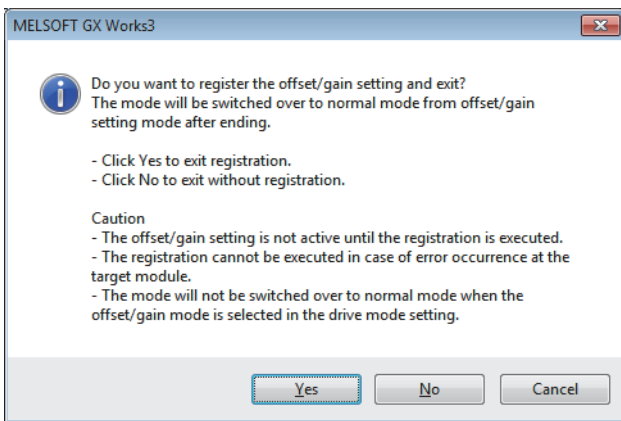
7. Check that "Offset Status" has changed to "Changed", and click the [Gain Setting] button.



8. Apply the gain voltage or current to the terminal of the corresponding channel, and click the [Yes] button.



9. Check that "Gain Status" has changed to "Changed", and click the [Close] button.



10. Click the [Yes] button.

APPENDICES

Appendix 1 I/O Conversion Characteristics

An I/O conversion characteristic of A/D conversion is expressed by the slope of the straight line connecting the offset value and the gain value at the time when an analog signal (voltage or current) from outside the programmable controller is converted to a digital output value.

Offset value

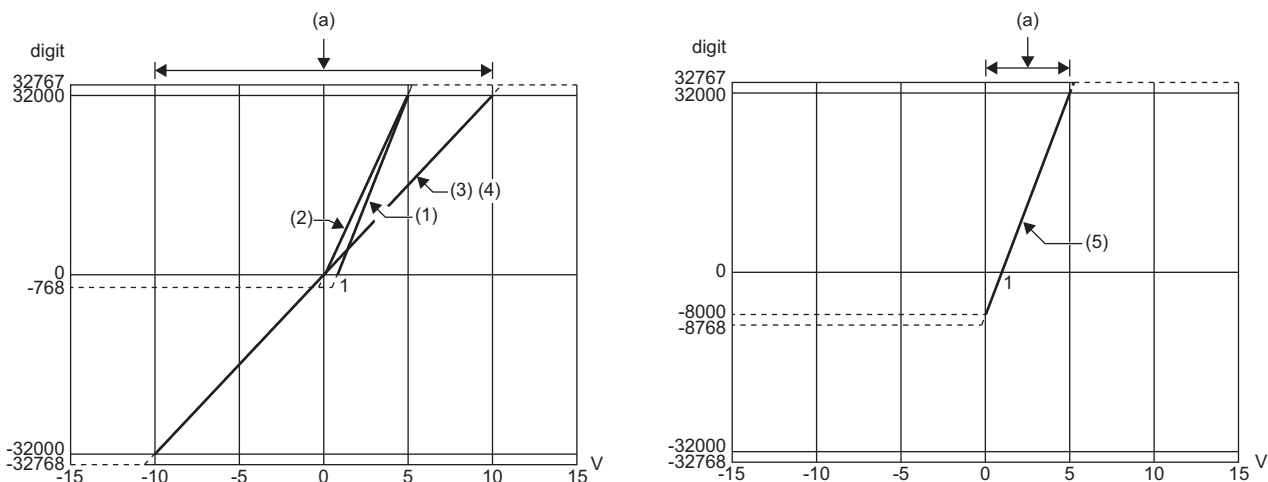
This value is the analog input value (voltage or current) where the corresponding digital output value is 0.

Gain value

This value is the analog input value (voltage or current) where the corresponding digital output value is 32000.

Voltage input characteristics

The following shows the lists of the analog input ranges and the graphs of each voltage input characteristic, at the voltage input.



digit: Digital output value

V: Analog input voltage (V)

(a): Practical analog input range

No.	Input range setting	Offset value	Gain value	Digital output value ^{*3}	Resolution
(1)	1 to 5V	1V	5V	0 to 32000	125.0 μ V
(2)	0 to 5V	0V	5V		156.3 μ V
(3)	-10 to 10V	-10V	10V	-32000 to 32000	312.5 μ V
(4)	0 to 10V	0	10V	0 to 32000	
(5)	1 to 5V (extended mode)	1V	5V	-8000 to 32000	125.0 μ V
—	User range setting	*1	*1	-32000 to 32000	125.0 μ V ^{*2}

*1 Set the offset value and gain value in the user range setting within a range that satisfies the following conditions. If the following conditions are not satisfied, A/D conversion may not be performed properly.

Setting range of the offset value and gain value: -10 to 10V

$((\text{gain value}) - (\text{offset value})) \geq 4.0\text{V}$

*2 Maximum resolution in the user range setting.

*3 When analog input exceeds the range of the digital output value, the digital output value is fixed to the maximum or minimum.

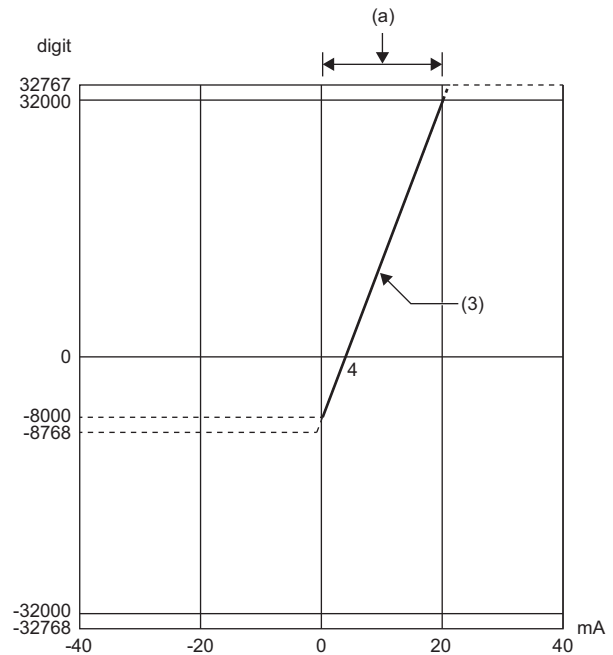
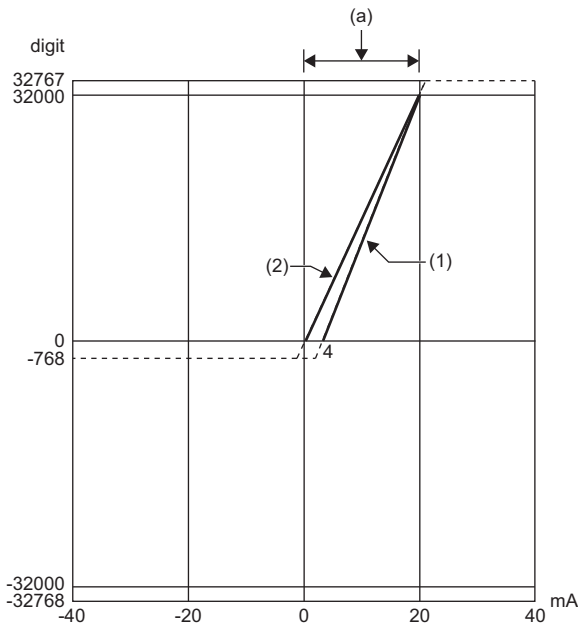
Input range setting	Digital output value	
	Minimum	Maximum
1 to 5V	-768	32767
0 to 5V		
-10 to 10V	-32768	
0 to 10V	-768	
1 to 5V (extended mode)	-8768	
User range setting	-32768	

Point

- Set values within the practical range of the analog input and digital output at each input range. If the values are out of the range, the resolution and accuracy may not fall within the range of the performance specifications. (Do not use values in the dotted line regions in the graphs of voltage input characteristics.)
- The range of 1 to 5V (extended mode) allows extending the lower limit value of analog input. The upper limit value of analog input cannot be extended.
- Do not set a voltage of $\pm 15\text{V}$ or more. Doing so can cause breakdown of the elements.

Current input characteristics

The following shows the lists of the analog input ranges and the graphs of each current input characteristic, at the current input.



digit: Digital output value
 mA: Analog input current (mA)
 (a): Practical analog input range

No.	Input range setting	Offset value	Gain value	Digital output value ^{*3}	Resolution
(1)	4 to 20mA	4mA	20mA	0 to 32000	500.0nA
(2)	0 to 20mA	0mA	20mA		625.0nA
(3)	4 to 20mA (extended mode)	4mA	20mA	-8000 to 32000	500.0nA
—	User range setting	*1	*1	-32000 to 32000	500.0nA ^{*2}

*1 Set the offset value and gain value in the user range setting within a range that satisfies the following conditions. If the following conditions are not satisfied, A/D conversion may not be performed properly.

Gain value \leq 20mA, offset value \geq 0mA
 $((\text{gain value}) - (\text{offset value})) \geq 16.0\text{mA}$

*2 Maximum resolution in the user range setting.

*3 When analog input exceeds the range of the digital output value, the digital output value is fixed to the maximum or minimum.

Input range setting	Digital output value	
	Minimum	Maximum
4 to 20mA	-768	32767
0 to 20mA		
4 to 20mA (extended mode)	-8768	
User range setting	-32768	

Point

- Set values within the practical range of the analog input and digital output at each input range. If the values are out of the range, the resolution and accuracy may not fall within the range of the performance specifications. (Do not use values in the dotted line regions in the graphs of current input characteristics.)
- The range of 4 to 20mA (extended mode) allows extending the lower limit value of analog input. The upper limit value of analog input cannot be extended.
- Do not set a current of $\pm 30\text{mA}$ or more. Doing so can cause breakdown of the elements.

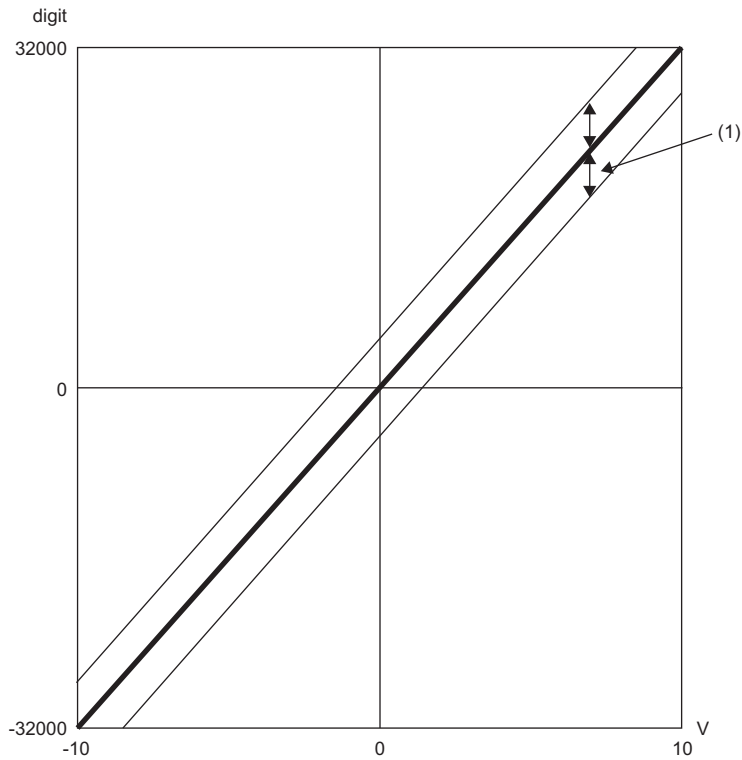
Appendix 2 Accuracy

Accuracy of A/D conversion is determined by the accuracy of the maximum value of digital output value.

An input characteristic change through changes of the offset/gain setting or the input range does not sacrifice the accuracy, which is maintained within the described range of the performance specifications.

The following graph shows the fluctuation range of accuracy when the range of -10 to 10V is selected.

The accuracy is $\pm 0.1\%$ (± 32 digit) at ambient temperature of $25 \pm 5^\circ\text{C}$; the accuracy is $\pm 0.2\%$ (± 64 digit) at ambient temperature of 0 to 55°C (except for the conditions under noise influence).



digit: Digital output value

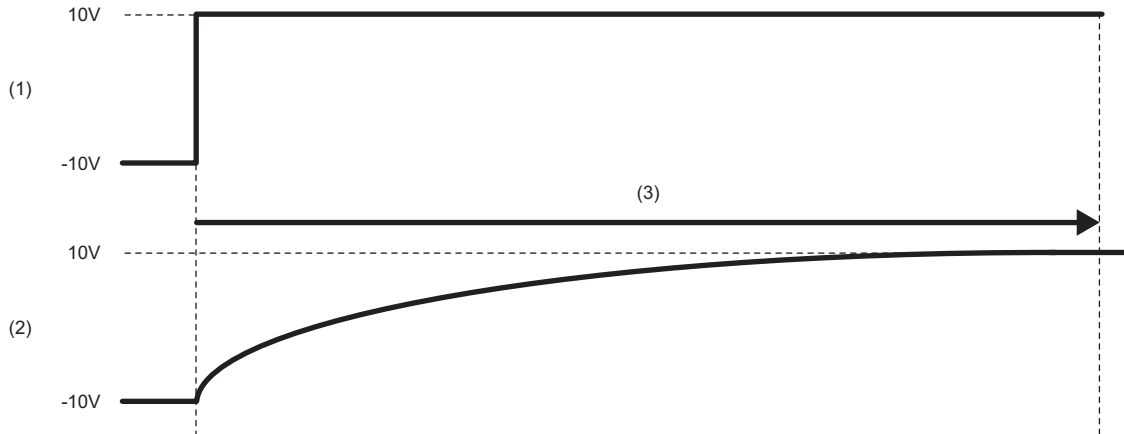
V: Analog input value (V)

(1) Fluctuation range

Appendix 3 Input Response Time

The input response time is the time taken for an analog input signal to reach the internal A/D converter. The time is extended or reduced depending on the variation of analog input. Note that the input response time becomes longer (20µs at a maximum) in the system with sudden input changes.

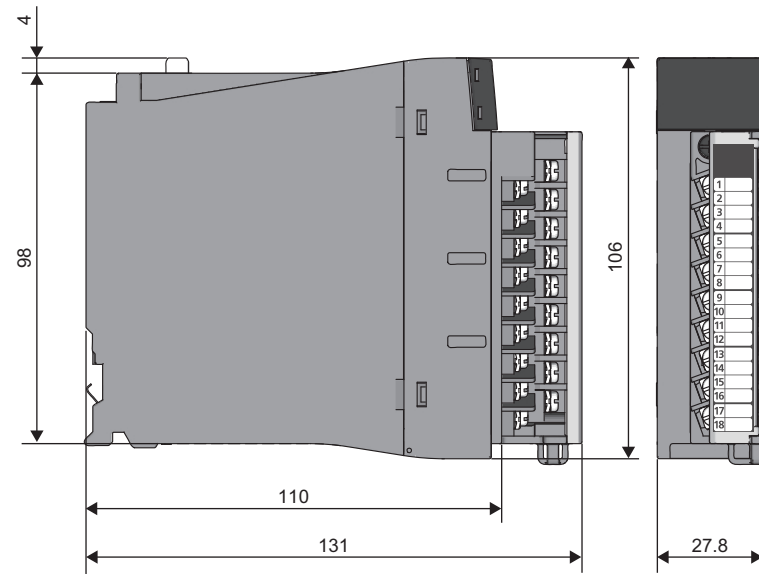
The following figure shows the input response time of when the analog input is changed from the lower limit value (-10V) to the upper limit value (10V) of the input range.



- (1) External input signal
- (2) Input signal to the A/D converter
- (3) Input response time

Appendix 4 External Dimensions

The following figure shows the external dimensions of the A/D converter module.



(unit: mm)

MEMO

A

INDEX

A

Accuracy of A/D conversion	48
ALM LED	18

C

Current input characteristics.	47
--	----

E

ERR LED	18
External dimensions	50
External wiring	31
External wiring examples	32

F

Function block (FB).	33
------------------------------	----

G

Gain value	45
----------------------	----

I

Input response time.	49
------------------------------	----

O

Offset value	45
Offset/gain setting	42

P

Performance specifications	20
Production information marking	18
Program examples	34

R

RUN LED	18
-------------------	----

S

Signal names of the terminal block	29
--	----

T

Terminal block	18,29
--------------------------	-------

V

Voltage input characteristics.	46
--	----

MEMO

REVISIONS

*The manual number is given on the bottom left of the back cover.

Revision date	*Manual number	Description
January 2016	SH(NA)-081580ENG-A	First edition
October 2017	SH(NA)-081580ENG-B	■Added or modified parts SAFETY PRECAUTIONS, TERMS, MANUAL PAGE ORGANIZATION, Section 2.1, Chapter 3, Section 6.2, Chapter 7
April 2018	SH(NA)-081580ENG-C	■Added or modified part Chapter 3, 5
May 2020	SH(NA)-081580ENG-D	■Added or modified parts RELEVANT MANUALS, TERMS, Chapter 3, Section 7.2, Addition of GENERIC TERMS AND ABBREVIATIONS
February 2024	SH(NA)-081580ENG-E	■Added or modified parts SAFETY PRECAUTIONS, Section 7.2

Japanese manual number: SH-081578-E

This manual confers no industrial property rights or any rights of any other kind, nor does it confer any patent licenses. Mitsubishi Electric Corporation cannot be held responsible for any problems involving industrial property rights which may occur as a result of using the contents noted in this manual.

© 2016 MITSUBISHI ELECTRIC CORPORATION

WARRANTY

Please confirm the following product warranty details before using this product.

1. Gratis Warranty Term and Gratis Warranty Range

If any faults or defects (hereinafter "Failure") found to be the responsibility of Mitsubishi occurs during use of the product within the gratis warranty term, the product shall be repaired at no cost via the sales representative or Mitsubishi Service Company.

However, if repairs are required onsite at domestic or overseas location, expenses to send an engineer will be solely at the customer's discretion. Mitsubishi shall not be held responsible for any re-commissioning, maintenance, or testing on-site that involves replacement of the failed module.

[Gratis Warranty Term]

The gratis warranty term of the product shall be for one year after the date of purchase or delivery to a designated place. Note that after manufacture and shipment from Mitsubishi, the maximum distribution period shall be six (6) months, and the longest gratis warranty term after manufacturing shall be eighteen (18) months. The gratis warranty term of repair parts shall not exceed the gratis warranty term before repairs.

[Gratis Warranty Range]

- (1) The range shall be limited to normal use within the usage state, usage methods and usage environment, etc., which follow the conditions and precautions, etc., given in the instruction manual, user's manual and caution labels on the product.
- (2) Even within the gratis warranty term, repairs shall be charged for in the following cases.
 1. Failure occurring from inappropriate storage or handling, carelessness or negligence by the user. Failure caused by the user's hardware or software design.
 2. Failure caused by unapproved modifications, etc., to the product by the user.
 3. When the Mitsubishi product is assembled into a user's device, Failure that could have been avoided if functions or structures, judged as necessary in the legal safety measures the user's device is subject to or as necessary by industry standards, had been provided.
 4. Failure that could have been avoided if consumable parts (battery, backlight, fuse, etc.) designated in the instruction manual had been correctly serviced or replaced.
 5. Failure caused by external irresistible forces such as fires or abnormal voltages, and Failure caused by force majeure such as earthquakes, lightning, wind and water damage.
 6. Failure caused by reasons unpredictable by scientific technology standards at time of shipment from Mitsubishi.
 7. Any other failure found not to be the responsibility of Mitsubishi or that admitted not to be so by the user.

2. Onerous repair term after discontinuation of production

- (1) Mitsubishi shall accept onerous product repairs for seven (7) years after production of the product is discontinued. Discontinuation of production shall be notified with Mitsubishi Technical Bulletins, etc.
- (2) Product supply (including repair parts) is not available after production is discontinued.

3. Overseas service

Overseas, repairs shall be accepted by Mitsubishi's local overseas FA Center. Note that the repair conditions at each FA Center may differ.

4. Exclusion of loss in opportunity and secondary loss from warranty liability

Regardless of the gratis warranty term, Mitsubishi shall not be liable for compensation to:

- (1) Damages caused by any cause found not to be the responsibility of Mitsubishi.
- (2) Loss in opportunity, lost profits incurred to the user by Failures of Mitsubishi products.
- (3) Special damages and secondary damages whether foreseeable or not, compensation for accidents, and compensation for damages to products other than Mitsubishi products.
- (4) Replacement by the user, maintenance of on-site equipment, start-up test run and other tasks.

5. Changes in product specifications

The specifications given in the catalogs, manuals or technical documents are subject to change without prior notice.

TRADEMARKS

The company names, system names and product names mentioned in this manual are either registered trademarks or trademarks of their respective companies.

In some cases, trademark symbols such as [™] or [®] are not specified in this manual.

SH(NA)-081580ENG-E(2402)MEE

MODEL: R60ADH4-U-IN-E

MODEL CODE: 13JX45

mitsubishi electric corporation

HEAD OFFICE : TOKYO BUILDING, 2-7-3 MARUNOUCHI, CHIYODA-KU, TOKYO 100-8310, JAPAN
NAGOYA WORKS : 1-14, YADA-MINAMI 5-CHOME, HIGASHI-KU, NAGOYA, JAPAN

When exported from Japan, this manual does not require application to the
Ministry of Economy, Trade and Industry for service transaction permission.

Specifications subject to change without notice.