



Programmable Controller

MELSEC iQ-R
series

**MELSEC iQ-R Channel Isolated Analog-Digital
Converter Module (With Signal Conditioning
Function) User's Manual (Startup)**



-R60AD6-DG



SAFETY PRECAUTIONS


(Read these precautions before using this product.)

Before using this product, please read this manual and the relevant manuals carefully and pay full attention to safety to handle the product correctly.

The precautions given in this manual are concerned with this product only. For the safety precautions of the programmable controller system, refer to the MELSEC iQ-R Module Configuration Manual.

In this manual, the safety precautions are classified into two levels: "  WARNING" and "  CAUTION".

 WARNING	Indicates that incorrect handling may cause hazardous conditions, resulting in death or severe injury.
 CAUTION	Indicates that incorrect handling may cause hazardous conditions, resulting in minor or moderate injury or property damage.

Under some circumstances, failure to observe the precautions given under "  CAUTION" may lead to serious consequences.

Observe the precautions of both levels because they are important for personal and system safety.

Make sure that the end users read this manual and then keep the manual in a safe place for future reference.

[Design Precautions]

WARNING

- Configure safety circuits external to the programmable controller to ensure that the entire system operates safely even when a fault occurs in the external power supply or the programmable controller. Failure to do so may result in an accident due to an incorrect output or malfunction.
 - (1) Emergency stop circuits, protection circuits, and protective interlock circuits for conflicting operations (such as forward/reverse rotations or upper/lower limit positioning) must be configured external to the programmable controller.
 - (2) When the programmable controller detects an abnormal condition, it stops the operation and all outputs are:
 - Turned off if the overcurrent or overvoltage protection of the power supply module is activated.
 - Held or turned off according to the parameter setting if the self-diagnostic function of the CPU module detects an error such as a watchdog timer error.
 - (3) All outputs may be turned on if an error occurs in a part, such as an I/O control part, where the CPU module cannot detect any error. To ensure safety operation in such a case, provide a safety mechanism or a fail-safe circuit external to the programmable controller. For a fail-safe circuit example, refer to "General Safety Requirements" in the MELSEC iQ-R Module Configuration Manual.
 - (4) Outputs may remain on or off due to a failure of a component such as a relay and transistor in an output circuit. Configure an external circuit for monitoring output signals that could cause a serious accident.
 - In an output circuit, when a load current exceeding the rated current or an overcurrent caused by a load short-circuit flows for a long time, it may cause smoke and fire. To prevent this, configure an external safety circuit, such as a fuse.
 - Configure a circuit so that the programmable controller is turned on first and then the external power supply. If the external power supply is turned on first, an accident may occur due to an incorrect output or malfunction.
 - Configure a circuit so that the external power supply is turned off first and then the programmable controller. If the programmable controller is turned off first, an accident may occur due to an incorrect output or malfunction.
 - For the operating status of each station after a communication failure, refer to manuals for the network used. For the manuals, please consult your local Mitsubishi representative. Incorrect output or malfunction due to a communication failure may result in an accident.
 - When connecting an external device with a CPU module or intelligent function module to modify data of a running programmable controller, configure an interlock circuit in the program to ensure that the entire system will always operate safely. For other forms of control (such as program modification, parameter change, forced output, or operating status change) of a running programmable controller, read the relevant manuals carefully and ensure that the operation is safe before proceeding. Improper operation may damage machines or cause accidents. When a Safety CPU is used, data cannot be modified while the Safety CPU is in SAFETY MODE.
 - Especially, when a remote programmable controller is controlled by an external device, immediate action cannot be taken if a problem occurs in the programmable controller due to a communication failure. To prevent this, configure an interlock circuit in the program, and determine corrective actions to be taken between the external device and CPU module in case of a communication failure.
-

[Design Precautions]

WARNING

- Do not write any data to the "system area" and "write-protect area" of the buffer memory in the module. Also, do not use any "use prohibited" signals as an output signal from the CPU module to each module. Doing so may cause malfunction of the programmable controller system. For the "system area", "write-protect area", and the "use prohibited" signals, refer to the user's manual for the module used. For areas used for safety communications, they are protected from being written by users, and thus safety communications failure caused by data writing does not occur.
 - If a communication cable is disconnected, the network may be unstable, resulting in a communication failure of multiple stations. Configure an interlock circuit in the program to ensure that the entire system will always operate safely even if communications fail. Failure to do so may result in an accident due to an incorrect output or malfunction. When safety communications are used, an interlock by the safety station interlock function protects the system from an incorrect output or malfunction.
 - When using the module in the system where a 2-wire transmitter is not connected, use the module where the current input range is set. If the actual system configuration is not consistent with the range setting, it may cause an electric shock.
-

[Design Precautions]

CAUTION

- Do not install the control lines or communication cables together with the main circuit lines or power cables. Doing so may result in malfunction due to electromagnetic interference. Keep a distance of 100mm or more between those cables.
 - During control of an inductive load such as a lamp, heater, or solenoid valve, a large current (approximately ten times greater than normal) may flow when the output is turned from off to on. Therefore, use a module that has a sufficient current rating.
 - After the CPU module is powered on or is reset, the time taken to enter the RUN status varies depending on the system configuration, parameter settings, and/or program size. Design circuits so that the entire system will always operate safely, regardless of the time.
 - Do not power off the programmable controller or reset the CPU module while the settings are being written. Doing so will make the data in the flash ROM and SD memory card undefined. The values need to be set in the buffer memory and written to the flash ROM and SD memory card again. Doing so also may cause malfunction or failure of the module.
 - When changing the operating status of the CPU module from external devices (such as the remote RUN/STOP functions), select "Do Not Open by Program" for "Opening Method" of "Module Parameter". If "Open by Program" is selected, an execution of the remote STOP function causes the communication line to close. Consequently, the CPU module cannot reopen the communication line, and the external device cannot execute the remote RUN.
-

[Security Precautions]

WARNING

- To maintain the security (confidentiality, integrity, and availability) of the programmable controller and the system against unauthorized access, denial-of-service (DoS) attacks, computer viruses, and other cyberattacks from external devices via the network, take appropriate measures such as firewalls, virtual private networks (VPNs), and antivirus solutions.
-

[Installation Precautions]

WARNING

- Shut off the external power supply (all phases) used in the system before mounting or removing the module. Failure to do so may result in electric shock or cause the module to fail or malfunction.
-

[Installation Precautions]

CAUTION

- Use the programmable controller in an environment that meets the general specifications in the MELSEC iQ-R Module Configuration Manual. Failure to do so may result in electric shock, fire, malfunction, or damage to or deterioration of the product.
 - To mount a module, place the concave part(s) located at the bottom onto the guide(s) of the base unit, and push in the module until the hook(s) located at the top snaps into place. Incorrect interconnection may cause malfunction, failure, or drop of the module.
 - To mount a module with no module fixing hook, place the concave part(s) located at the bottom onto the guide(s) of the base unit, push in the module, and fix it with screw(s). Incorrect interconnection may cause malfunction, failure, or drop of the module.
 - When using the programmable controller in an environment of frequent vibrations, fix the module with a screw.
 - Tighten the screws within the specified torque range. Undertightening can cause drop of the component or wire, short circuit, or malfunction. Overtightening can damage the screw and/or module, resulting in drop, short circuit, or malfunction. For the specified torque range, refer to the MELSEC iQ-R Module Configuration Manual.
 - When using an extension cable, connect it to the extension cable connector of the base unit securely. Check the connection for looseness. Poor contact may cause malfunction.
 - When using an SD memory card, fully insert it into the SD memory card slot. Check that it is inserted completely. Poor contact may cause malfunction.
 - Securely insert an extended SRAM cassette or a battery-less option cassette into the cassette connector of the CPU module. After insertion, close the cassette cover and check that the cassette is inserted completely. Poor contact may cause malfunction.
 - Beware that the module could be very hot while power is on and immediately after power-off.
 - Do not directly touch any conductive parts and electronic components of the module, SD memory card, extended SRAM cassette, battery-less option cassette, or connector. Doing so can cause malfunction or failure of the module.
-

[Wiring Precautions]

WARNING

- Shut off the external power supply (all phases) used in the system before installation and wiring. Failure to do so may result in electric shock or cause the module to fail or malfunction.
- After installation and wiring, attach a blank cover module (RG60) to each empty slot before powering on the system for operation. Also, attach an extension connector protective cover^{*1} to each unused extension cable connector as necessary. Directly touching any conductive parts of the connectors while power is on may result in electric shock.

*1 For details, please consult your local Mitsubishi Electric representative.

[Wiring Precautions]

CAUTION

- Individually ground the FG and LG terminals of the programmable controller with a ground resistance of 100 ohms or less. Failure to do so may result in electric shock or malfunction.
 - Use applicable solderless terminals and tighten them within the specified torque range. If any spade solderless terminal is used, it may be disconnected when the terminal screw comes loose, resulting in failure.
 - Check the rated voltage and signal layout before wiring to the module, and connect the cables correctly. Connecting a power supply with a different voltage rating or incorrect wiring may cause fire or failure.
 - Connectors for external devices must be crimped or pressed with the tool specified by the manufacturer, or must be correctly soldered. Incomplete connections may cause short circuit, fire, or malfunction.
 - Securely connect the connector to the module. Poor contact may cause malfunction.
 - Do not install the control lines or communication cables together with the main circuit lines or power cables. Doing so may result in malfunction due to noise. Keep a distance of 100mm or more between those cables.
 - Place the cables in a duct or clamp them. If not, dangling cables may swing or inadvertently be pulled, resulting in malfunction or damage to modules or cables.
In addition, the weight of the cables may put stress on modules in an environment of strong vibrations and shocks.
Do not clamp the extension cables with the jacket stripped. Doing so may change the characteristics of the cables, resulting in malfunction.
 - Check the interface type and correctly connect the cable. Incorrect wiring (connecting the cable to an incorrect interface) may cause failure of the module and external device.
 - Tighten the terminal screws or connector screws within the specified torque range. Undertightening can cause drop of the screw, short circuit, fire, or malfunction. Overtightening can damage the screw and/or module, resulting in drop, short circuit, fire, or malfunction.
 - When disconnecting the cable from the module, do not pull the cable by the cable part. For the cable with connector, hold the connector part of the cable. For the cable connected to the terminal block, loosen the terminal screw. Pulling the cable connected to the module may result in malfunction or damage to the module or cable.
 - Prevent foreign matter such as dust or wire chips from entering the module. Such foreign matter can cause a fire, failure, or malfunction.
 - When a protective film is attached to the top of the module, remove it before system operation. If not, inadequate heat dissipation of the module may cause a fire, failure, or malfunction.
 - Programmable controllers must be installed in control panels. Connect the main power supply to the power supply module in the control panel through a relay terminal block. Wiring and replacement of a power supply module must be performed by qualified maintenance personnel with knowledge of protection against electric shock. For wiring, refer to the MELSEC iQ-R Module Configuration Manual.
 - For Ethernet cables to be used in the system, select the ones that meet the specifications in the user's manual for the module used. If not, normal data transmission is not guaranteed.
 - Individually ground the shielded cables of the programmable controller with a ground resistance of 100 ohms or less. Failure to do so may result in electric shock or malfunction.
-

[Startup and Maintenance Precautions]

WARNING

- Do not touch any terminal while power is on. Doing so will cause electric shock or malfunction.
 - Correctly connect the battery connector. Do not charge, disassemble, heat, short-circuit, solder, or throw the battery into the fire. Also, do not expose it to liquid or strong shock. Doing so will cause the battery to produce heat, explode, ignite, or leak, resulting in injury and fire.
 - Shut off the external power supply (all phases) used in the system before cleaning the module or retightening the terminal screws, connector screws, or module fixing screws. Failure to do so may result in electric shock.
-

[Startup and Maintenance Precautions]

CAUTION

- When connecting an external device with a CPU module or intelligent function module to modify data of a running programmable controller, configure an interlock circuit in the program to ensure that the entire system will always operate safely. For other forms of control (such as program modification, parameter change, forced output, or operating status change) of a running programmable controller, read the relevant manuals carefully and ensure that the operation is safe before proceeding. Improper operation may damage machines or cause accidents.
 - Especially, when a remote programmable controller is controlled by an external device, immediate action cannot be taken if a problem occurs in the programmable controller due to a communication failure. To prevent this, configure an interlock circuit in the program, and determine corrective actions to be taken between the external device and CPU module in case of a communication failure.
 - Do not disassemble or modify the modules. Doing so may cause failure, malfunction, injury, or a fire.
 - Use any radio communication device such as a cellular phone or PHS (Personal Handy-phone System) 25cm or more away in all directions from the programmable controller. Failure to do so may cause malfunction.
 - Shut off the external power supply (all phases) used in the system before mounting or removing the module. Failure to do so may cause the module to fail or malfunction.
 - Tighten the screws within the specified torque range. Undertightening can cause drop of the component or wire, short circuit, or malfunction. Overtightening can damage the screw and/or module, resulting in drop, short circuit, or malfunction.
 - After the first use of the product, do not perform each of the following operations more than 50 times (IEC 61131-2/JIS B 3502 compliant).
Exceeding the limit may cause malfunction.
 - Mounting/removing the module to/from the base unit
 - Inserting/removing the extended SRAM cassette or battery-less option cassette to/from the CPU module
 - Mounting/removing the terminal block to/from the module
 - Connecting/disconnecting the extension cable to/from the base unit
 - After the first use of the product, do not insert/remove the SD memory card to/from the CPU module more than 500 times. Exceeding the limit may cause malfunction.
 - Do not touch the metal terminals on the back side of the SD memory card. Doing so may cause malfunction or failure of the module.
 - Do not touch the integrated circuits on the circuit board of an extended SRAM cassette or a battery-less option cassette. Doing so may cause malfunction or failure of the module.
 - Do not drop or apply shock to the battery to be installed in the module. Doing so may damage the battery, causing the battery fluid to leak inside the battery. If the battery is dropped or any shock is applied to it, dispose of it without using.
 - Startup and maintenance of a control panel must be performed by qualified maintenance personnel with knowledge of protection against electric shock. Lock the control panel so that only qualified maintenance personnel can operate it.
-

[Startup and Maintenance Precautions]

CAUTION

- Before handling the module, touch a conducting object such as a grounded metal to discharge the static electricity from the human body. Wearing a grounded antistatic wrist strap is recommended. Failure to discharge the static electricity may cause the module to fail or malfunction.
 - After unpacking, eliminate static electricity from the module to prevent electrostatic discharge from affecting the module. If an electrostatically charged module comes in contact with a grounded metal object, a sudden electrostatic discharge of the module may cause failure.
For details on how to eliminate static electricity from the module, refer to the following.
Antistatic Precautions Before Using MELSEC iQ-R Series Products (FA-A-0368)
 - Use a clean and dry cloth to wipe off dirt on the module.
-

[Operating Precautions]

CAUTION

- When changing data and operating status, and modifying program of the running programmable controller from an external device such as a personal computer connected to an intelligent function module, read relevant manuals carefully and ensure the safety before operation. Incorrect change or modification may cause system malfunction, damage to the machines, or accidents.
 - Do not power off the programmable controller or reset the CPU module while the setting values in the buffer memory are being written to the flash ROM in the module. Doing so will make the data in the flash ROM and SD memory card undefined. The values need to be set in the buffer memory and written to the flash ROM and SD memory card again. Doing so can cause malfunction or failure of the module.
-

[Disposal Precautions]

CAUTION

- When disposing of this product, treat it as industrial waste.
 - When disposing of batteries, separate them from other wastes according to the local regulations. For details on battery regulations in EU member states, refer to the MELSEC iQ-R Module Configuration Manual.
-

[Transportation Precautions]

CAUTION

- When transporting lithium batteries, follow the transportation regulations. For details on the regulated models, refer to the MELSEC iQ-R Module Configuration Manual.
 - The halogens (such as fluorine, chlorine, bromine, and iodine), which are contained in a fumigant used for disinfection and pest control of wood packaging materials, may cause failure of the product. Prevent the entry of fumigant residues into the product or consider other methods (such as heat treatment) instead of fumigation. The disinfection and pest control measures must be applied to unprocessed raw wood.
-

CONDITIONS OF USE FOR THE PRODUCT

- (1) MELSEC programmable controller ("the PRODUCT") shall be used in conditions;
- i) where any problem, fault or failure occurring in the PRODUCT, if any, shall not lead to any major or serious accident; and
 - ii) where the backup and fail-safe function are systematically or automatically provided outside of the PRODUCT for the case of any problem, fault or failure occurring in the PRODUCT.
- (2) The PRODUCT has been designed and manufactured for the purpose of being used in general industries. MITSUBISHI ELECTRIC SHALL HAVE NO RESPONSIBILITY OR LIABILITY (INCLUDING, BUT NOT LIMITED TO ANY AND ALL RESPONSIBILITY OR LIABILITY BASED ON CONTRACT, WARRANTY, TORT, PRODUCT LIABILITY) FOR ANY INJURY OR DEATH TO PERSONS OR LOSS OR DAMAGE TO PROPERTY CAUSED BY the PRODUCT THAT ARE OPERATED OR USED IN APPLICATION NOT INTENDED OR EXCLUDED BY INSTRUCTIONS, PRECAUTIONS, OR WARNING CONTAINED IN MITSUBISHI ELECTRIC USER'S, INSTRUCTION AND/OR SAFETY MANUALS, TECHNICAL BULLETINS AND GUIDELINES FOR the PRODUCT.
- ("Prohibited Application")
- Prohibited Applications include, but not limited to, the use of the PRODUCT in;
- Nuclear Power Plants and any other power plants operated by Power companies, and/or any other cases in which the public could be affected if any problem or fault occurs in the PRODUCT.
 - Railway companies or Public service purposes, and/or any other cases in which establishment of a special quality assurance system is required by the Purchaser or End User.
 - Aircraft or Aerospace, Medical applications, Train equipment, transport equipment such as Elevator and Escalator, Incineration and Fuel devices, Vehicles, Manned transportation, Equipment for Recreation and Amusement, and Safety devices, handling of Nuclear or Hazardous Materials or Chemicals, Mining and Drilling, and/or other applications where there is a significant risk of injury to the public or property.
- Notwithstanding the above restrictions, Mitsubishi Electric may in its sole discretion, authorize use of the PRODUCT in one or more of the Prohibited Applications, provided that the usage of the PRODUCT is limited only for the specific applications agreed to by Mitsubishi Electric and provided further that no special quality assurance or fail-safe, redundant or other safety features which exceed the general specifications of the PRODUCTS are required. For details, please contact the Mitsubishi Electric representative in your region.
- (3) Mitsubishi Electric shall have no responsibility or liability for any problems involving programmable controller trouble and system trouble caused by DoS attacks, unauthorized access, computer viruses, and other cyberattacks.

INTRODUCTION

Thank you for purchasing the Mitsubishi Electric MELSEC iQ-R series programmable controllers.

This manual describes the performance specifications, procedures before operation, wiring, and operation examples of the relevant product listed below.


Before using this product, please read this manual and the relevant manuals carefully and develop familiarity with the functions and performance of the MELSEC iQ-R series programmable controller to handle the product correctly.

When applying the program examples provided in this manual to an actual system, ensure the applicability and confirm that it will not cause system control problems.

Please make sure that the end users read this manual.

Point

Unless otherwise specified, this manual provides program examples in which the I/O numbers of X/Y0 to X/YF are assigned to the A/D converter module. Assign I/O numbers when applying the program examples to an actual system. For I/O number assignment, refer to the following.

 MELSEC iQ-R Module Configuration Manual


Relevant product

R60AD6-DG

COMPLIANCE WITH EMC AND LOW VOLTAGE DIRECTIVES

Method of ensuring compliance

To ensure that Mitsubishi Electric programmable controllers maintain EMC and Low Voltage Directives when incorporated into other machinery or equipment, certain measures may be necessary. Please refer to one of the following manuals.


 MELSEC iQ-R Module Configuration Manual

 Safety Guidelines (IB-0800525)

The CE mark on the side of the programmable controller indicates compliance with EMC and Low Voltage Directives.

Additional measures

To ensure that this product maintains EMC and Low Voltage Directives, please refer to one of the following manuals.

 MELSEC iQ-R Module Configuration Manual

 Safety Guidelines (IB-0800525)

MEMO

CONTENTS

SAFETY PRECAUTIONS	1
CONDITIONS OF USE FOR THE PRODUCT	10
INTRODUCTION	11
COMPLIANCE WITH EMC AND LOW VOLTAGE DIRECTIVES	12
RELEVANT MANUALS	15
TERMS	16
GENERIC TERMS AND ABBREVIATIONS	16
CHAPTER 1 PART NAMES	17
CHAPTER 2 SPECIFICATIONS	19
2.1 Performance Specifications	19
CHAPTER 3 FUNCTION LIST	21
CHAPTER 4 PROCEDURES BEFORE OPERATION	23
CHAPTER 5 SYSTEM CONFIGURATION	25
CHAPTER 6 WIRING	27
6.1 Wiring Precautions	27
Connector for external devices	27
6.2 External Wiring	28
Signal layout of the connector for external devices	28
CHAPTER 7 OPERATION EXAMPLES	31
7.1 Programming Procedure	31
7.2 Program Examples	31
CHAPTER 8 OFFSET/GAIN SETTING	40
8.1 Setting Procedure	40
APPENDICES	43
Appendix 1 I/O Conversion Characteristics	43
Appendix 2 Accuracy	46
Appendix 3 External Dimensions	47
INDEX	48
REVISIONS	50
WARRANTY	51
TRADEMARKS	52


RELEVANT MANUALS

Manual name [manual number]	Description	Available form
MELSEC iQ-R Channel Isolated Analog-Digital Converter Module (With Signal Conditioning Function) User's Manual (Startup) [SH-082298ENG] (this manual)	Performance specifications, procedures before operation, wiring, operation examples, and offset/gain setting of the A/D converter module	Print book e-Manual PDF
MELSEC iQ-R Channel Isolated Analog-Digital Converter Module (With Signal Conditioning Function) User's Manual (Application) [SH-082300ENG]	Functions, parameter settings, troubleshooting, I/O signals, and buffer memory of the A/D converter module	Print book e-Manual PDF
MELSEC iQ-R Programming Manual (Module Dedicated Instructions) [SH-081976ENG]	Dedicated instructions for the intelligent function modules	e-Manual PDF
MELSEC iQ-R Analog-Digital Converter Module/Digital-Analog Converter Module Function Block Reference [BCN-P5999-0375]	Function blocks of the A/D converter module and D/A converter module	e-Manual PDF
GX Works3 Operating Manual [SH-081215ENG]	System configuration, parameter settings, and online operations of GX Works3	e-Manual PDF
MELSEC iQ-R Online Module Change Manual [SH-081501ENG]	Online module change, which allows a module to be changed without stopping the system for MELSEC iQ-R series programmable controllers	Print book e-Manual PDF

This manual does not include detailed information on the following:

- General specifications
- Applicable CPU modules and the number of mountable modules
- Installation

For details, refer to the following.

 MELSEC iQ-R Module Configuration Manual

Point

e-Manual refers to the Mitsubishi Electric FA electronic book manuals that can be browsed using a dedicated tool.

e-Manual has the following features:

- Required information can be cross-searched in multiple manuals.
- Other manuals can be accessed from the links in the manual.
- The hardware specifications of each part can be found from the product figures.
- Pages that users often browse can be bookmarked.
- Sample programs can be copied to an engineering tool.

TERMS

Unless otherwise specified, this manual uses the following terms.

Term	Description
Buffer memory	Memory in an intelligent function module for storing data such as setting values and monitored values. When integrated into the CPU module, this memory refers to a memory for storing data such as setting values and monitored values of the Ethernet function, and data used for data communication of the multiple CPU system function.
Engineering tool	A tool used for setting up programmable controllers, programming, debugging, and maintenance
Global label	A label that is valid for all the program data when multiple program data are created in the project. There are two types of global label: a module specific label (module label), which is generated automatically by GX Works3, and an optional label, which can be created for any specified device.
Module label	A label that represents one of memory areas (I/O signals and buffer memory areas) specific to each module in a given character string. For the module used, GX Works3 automatically generates this label, which can be used as a global label.
Offset/gain setting mode	A mode used for the offset/gain setting
Q compatible mode	A mode in which the module operates with the buffer memory map converted to the equivalent one of the MELSEC-Q series
User range	An analog input range where any value can be set. This range can be set in the offset/gain setting.
Watchdog timer error	The watchdog timer is a timer with which the module itself monitors whether the module's internal processing is performed correctly. The watchdog timer error is an error that occurs when internal processing is not processed correctly.

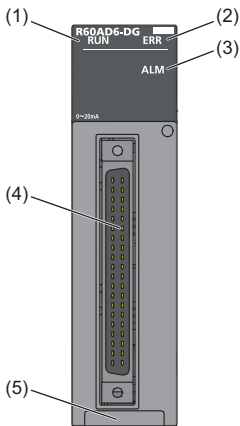
GENERIC TERMS AND ABBREVIATIONS

Unless otherwise specified, this manual uses the following generic terms and abbreviations.

Generic term/abbreviation	Description
2-wire transmitter range	A generic term for the analog input range for current input that uses a 2-wire transmitter
A/D converter module	An abbreviation for the MELSEC iQ-R series channel isolated analog-digital converter module
Current input range	A generic term for the analog input range for current input that does not use a 2-wire transmitter

1 PART NAMES

This chapter describes the part names of the A/D converter module.



No.	Name	Description
(1)	RUN LED	Indicates the operating status of the module. On: Normal operation Flashing (cycle of 1s): In offset/gain setting mode Flashing (cycle of 400ms): Selected as a module for the online module change Off: 5V power supply interrupted, watchdog timer error occurred, or module change permitted in the process of online module change
(2)	ERR LED	Indicates the error status of the module.*1 On: Error occurred Off: Normal operation
(3)	ALM LED	Indicates the alarm status of the module.*1 On: Warning (process alarm or rate alarm) issued Flashing: Input signal error detected Off: Normal operation
(4)	Connector for external devices	Connector for connection to input signal wires from external devices and others For the signal layout, refer to the following. ☞ Page 28 Signal layout of the connector for external devices
(5)	Production information marking	Shows the product information (16 digits) of the module.

*1 For details, refer to the following.

📖 MELSEC iQ-R Channel Isolated Analog-Digital Converter Module (With Signal Conditioning Function) User's Manual (Application)

Point 🔍

The LED on/off status can be checked from the buffer memory. For details, refer to the following.

📖 MELSEC iQ-R Channel Isolated Analog-Digital Converter Module (With Signal Conditioning Function) User's Manual (Application)

MEMO

2 SPECIFICATIONS


This chapter describes the performance specifications.

2.1 Performance Specifications


This section describes the performance specifications of the A/D converter modules.

R60AD6-DG				
Item	Specifications			
Number of analog input channels	6 channels			
Input specifications	With 2-wire transmitter	4 to 20mADC (input resistance 250Ω)		
	Current	0 to 20mADC (input resistance 250Ω)		
Power supply part for 2-wire transmitter	Supply voltage	26±2VDC		
	Maximum supply current	24mADC		
	Short-circuit protection	Available (limiting current: 25 to 35mA)		
	Check terminal	Available		
Digital output	16-bit signed binary value (-32768 to 32767)			
I/O conversion characteristics ^{*1} , resolution	Analog input range		Digital output value	Resolution
	2-wire transmitter range	4 to 20mA	0 to 32000	500.0nA
		4 to 20mA (extended mode)	-8000 to 32767 (-8000 to 36000) ^{*2}	500.0nA
		User range setting ^{*3}	0 to 32000	466.0nA
	Current input range	0 to 20mA	0 to 32000	625.0nA
		4 to 20mA		500.0nA
		4 to 20mA (extended mode)	-8000 to 32767 (-8000 to 36000) ^{*2}	500.0nA
		User range setting ^{*3}	0 to 32000	466.0nA
Accuracy (accuracy of the maximum digital output value) ^{*4}	Reference accuracy: Within ±0.1% (±32 digit) ^{*5} Temperature coefficient: ±35ppm/°C (0.0035%/°C) ^{*6}			
Conversion speed ^{*7}	10ms/CH			
Response time ^{*8}	20ms			
Absolute maximum input ^{*9}	-22mA/+35mA			
Number of offset/gain settings ^{*10}	50000 times maximum			
Isolation method	Between I/O terminals and programmable controller power supply: Transformer Between analog input channels: Transformer Between external power supply and analog input terminals: Transformer			
Withstand voltage	Between I/O terminals and programmable controller power supply: 500VAC rms for 1 minute Between analog input channels: 1000VAC rms for 1 minute Between external power supply and analog input terminals: 500VAC rms for 1 minute			
Isolation resistance	Between I/O terminals and programmable controller power supply: 10MΩ or higher, at 500VDC Between analog input channels: 10MΩ or higher, at 500VDC Between external power supply and analog input terminals: 10MΩ or higher, at 500VDC			
Number of occupied I/O points	16 points, 1 slot (I/O assignment: Intelligent 16 points)			
External interface	40-pin connector			
Applicable wire size	When A6CON1 and A6CON4 are used	0.088 to 0.3mm ² (28 to 22 AWG) (stranded wire)		
	When A6CON2 is used	0.088 to 0.24mm ² (28 to 24 AWG) (stranded wire)		
Connector for external devices (sold separately)	A6CON1, A6CON2, A6CON4			
External power supply ^{*11}	24VDC +20%, -15%			
	Ripple, spike: 500mVp-p or lower			
	Inrush current: 5.5A within 550μs			
	Current consumption: 0.27A			
Internal current consumption (5VDC)	0.36A			



Item		Specifications
External dimensions	Height	106mm
	Width	27.8mm
	Depth	110mm
Weight		0.20kg

- *1 For details on the I/O conversion characteristics, refer to the following.
 Page 43 I/O Conversion Characteristics
- *2 The range of data that are stored in Digital output value (32 bits)
- *3 The user range setting is 0 to 24mA.
- *4 Except for the conditions under noise influence.
- *5 The accuracy at an ambient temperature of when the offset/gain setting is configured
- *6 The rate of change per a temperature of 1°C. The reference temperature is 25°C.
- *7 The cycle at which a digital output value is updated
- *8 The time taken for an analog input signal to reach the A/D converter inside the module
- *9 These input current values are instantaneous values at which no breakdown occurs in the internal resistance of the module.
- *10 A count more than 50000 times causes Number of writes to offset/gain settings reach limit error (error code: 1080H).
- *11 The external power supply is used for the 2-wire transmitter. If the current input is used for all channels used, wiring of 24VDC is not required.

3 FUNCTION LIST

The following table lists the functions of the A/D converter module. For further details on the functions, refer to the following.  MELSEC iQ-R Channel Isolated Analog-Digital Converter Module (With Signal Conditioning Function) User's Manual (Application)

Item		Description	
Range switching function		Allows the input range of analog input to be switched for each channel. Switching the range makes it possible to change the I/O conversion characteristics.	
A/D conversion enable/disable setting function		Controls whether to enable or disable A/D conversion for each channel. Disabling A/D conversion for unused channels reduces the conversion cycles.	
Conversion start time setting function		Setting the A/D conversion start time makes it possible to start A/D conversion from the time an output from the 2-wire transmitter becomes stable.	
A/D conversion method	Sampling processing	Converts analog input values into digital output values at every sampling period, storing them in buffer memory areas.	
	Averaging processing	Time average	Executes A/D conversion for the set time and performs the averaging processing on the total value excluding the maximum and minimum values. The average processed values are stored in the buffer memory area. The number of processing times within the set time changes depending on the number of channels where A/D conversion is enabled.
		Count average	Executes A/D conversion for a set number of times and performs the averaging processing on the total value excluding the maximum and minimum values. The average processed values are stored in the buffer memory area. The time taken to store the average value obtained by the count average processing in the buffer memory area changes depending on the number of channels where A/D conversion is enabled.
		Moving average	Averages digital output values taken at every sampling period for a specified number of times, and stores the averaged value in the buffer memory area. The target range for averaging processing moves at each sampling period, thereby allowing the latest digital output value to be obtained.
Primary delay filter		Smooths the transient noise of analog input depending on the set time constant. The smoothed digital output values are stored in the buffer memory area.	
Scaling function		Performs scale conversion on digital output values within the range from a scaling upper limit value to a scaling lower limit value, both of which are set at desired values. This function reduces the time and effort to create a program of the scale conversion.	
Warning output function	Process alarm	Outputs a warning when a digital operation value falls within the preset warning output range.	
	Rate alarm	Outputs a warning if the change rate of a digital output value is equal to or more than the rate alarm upper limit value, or is equal to or less than the rate alarm lower limit value.	
Input signal error detection function	Upper limit detection, lower limit detection, upper and lower limit detection	Outputs an alarm when an analog input value exceeds the preset range.	
	Simple disconnection detection	Outputs an alarm when an analog input value is 2mA or smaller.	
Shift function		Adds (shifts) a set conversion value shift amount to a digital output value, and stores the result in the buffer memory area. A change in conversion value shift amount is reflected to the digital operation value in real time, which facilitates fine adjustment at system start-up.	
Digital clipping function		Fixes a possible digital operation value to the maximum digital output value or the minimum digital output value when an input current exceeds the input range.	
Difference conversion function		Subtracts a difference conversion reference value from a digital operation value and stores the resulting value in the buffer memory area.	
Maximum value/minimum value hold function		Stores the maximum and minimum values of digital operation values in the buffer memory area for each channel.	
External power supply interruption detection function		Detects the state in which 24VDC from the external power supply is not supplied or is stopped.	
Supply power temporary stop function		Temporarily stops power supply requirements for 2-wire transmitter and A/D conversion for each channel. This function makes it possible to replace the 2-wire transmitter safely while keeping A/D conversion for other channels running.	
Logging function		Logs (records) digital output values or digital operation values. 1000 points of data can be logged for each channel.	
Logging read function		Makes it possible to store more than 1000 points of logging data without stopping logging by transferring the device data to the file register of the CPU module during logging. This function reduces the takt time in a test demanding high-speed conversion.	
Interrupt function		Executes an interrupt program of the CPU module when an interrupt factor such as an input signal error or warning output is detected.	
Error history function		Records errors and alarms that have occurred in the A/D converter module, storing the record into the buffer memory area. Up to 16 storage areas are provided for both errors and alarms.	

Item	Description
Module event history collection function	Collects generated errors and alarms, and performed operations in the A/D converter module as event information into the CPU module.
Offset/gain setting	Allows the correction of errors in digital output values.
Backing up, saving, and restoring offset/gain values	The A/D converter module is capable of backing up, saving, and restoring offset/gain values of the user range setting.
Online module change	Allows module change without stopping the system. For the procedure of the online module change, refer to the following.  MELSEC iQ-R Online Module Change Manual
Q compatible mode function	Allows the buffer memory addresses of the A/D converter module to be the same layout as the MELSEC-Q series module. This compatibility makes it possible to reuse sequence programs that have exhibited high performance on the MELSEC-Q series modules.
Firmware update function ^{*1}	Enables users to update the firmware versions of modules by using firmware update files. For further details on the function, refer to the following.  MELSEC iQ-R Module Configuration Manual

*1 The firmware update function cannot be used for modules in offset/gain setting mode.

Precautions

Check that the output from the A/D converter module is stopped before performing a firmware update. If a firmware update is performed without stopping the output, an unintended operation may occur, causing a system failure.

4 PROCEDURES BEFORE OPERATION

This chapter describes the procedures before operation.

1. Mounting a module

Mount the A/D converter module in any desired configuration.

☞ Page 31 System configuration

2. Wiring

Perform wiring of external devices to the A/D converter module.

☞ Page 28 External Wiring

3. Adding a module

Add the A/D converter module to a module configuration by using the engineering tool. For details, refer to the following.

📖 GX Works3 Operating Manual

4. Parameter settings

Set up the parameters of the A/D converter module by using the engineering tool. For details, refer to the following.

📖 MELSEC iQ-R Channel Isolated Analog-Digital Converter Module (With Signal Conditioning Function) User's Manual (Application)

5. Offset/gain setting

Perform the offset/gain setting to set a user range, if necessary.

☞ Page 40 OFFSET/GAIN SETTING

6. Programming


Create a program. For details, refer to the following.

☞ Page 31 OPERATION EXAMPLES

MEMO

5 SYSTEM CONFIGURATION

For details on the system configuration of the MELSEC iQ-R series, CPU modules for which the A/D converter module can be used, and the number of mountable modules, refer to the following.

 MELSEC iQ-R Module Configuration Manual

6 WIRING

This chapter describes the wiring of the A/D converter module.

6.1 Wiring Precautions

Connector for external devices

Precautions

Tighten the screws within the specified torque range.

Screw type	Tightening torque range
Module fixing screw (M3 screw)*1	0.36 to 0.48N-m
Connector screw (M2.6 screw)	0.20 to 0.29N-m

*1 The A/D converter module can be easily fixed to the base unit with the hook(s) located at the top. However, in places where a vibration occurs frequently, fix the module with module fixing screws.

- Use copper wire with a temperature rating of 75°C or higher for the connector.
- Use UL listed connectors if necessary for UL compliance.

Applicable connectors

Connectors for external devices to be used for the A/D converter module are sold separately.

The following table lists the connector types.

■40-pin connector

Type	Model	Applicable wire size
Soldering type connector (straight type)	A6CON1*1	0.088 to 0.3mm ² (28 to 22 AWG), (stranded wire)
Crimping type connector (straight type)	A6CON2	0.088 to 0.24mm ² (28 to 24 AWG) (stranded wire)
Soldering type connector (dual purpose (straight/oblique) type)	A6CON4*1	0.088 to 0.3mm ² (28 to 22 AWG), (stranded wire)

*1 When using 40 pins, use cables whose sheath outside diameters are 1.3mm or shorter.
Select wires suitable to the current value used.

Point

- The A6CON3 (IDC type connector (straight type)) cannot be used.
- The connector/terminal block converter module and the dedicated cables that are designed for the MELSEC-Q series channel isolated analog module can be used. For details, refer to the following.

☞ Page 30 When the connector/terminal block converter module is used

■40-pin connector crimping tool

Type	Model	Contact
Crimping tool	N363TT005H	OTAX Corporation

For how to wire connectors and how to use the crimping tool, contact the manufacturer.

Wiring method, installation procedure, and disconnection procedure of the connector

For the wiring method, installation procedure, and disconnection procedure, refer to the following.

📖 MELSEC iQ-R Module Configuration Manual

6.2 External Wiring

Signal layout of the connector for external devices

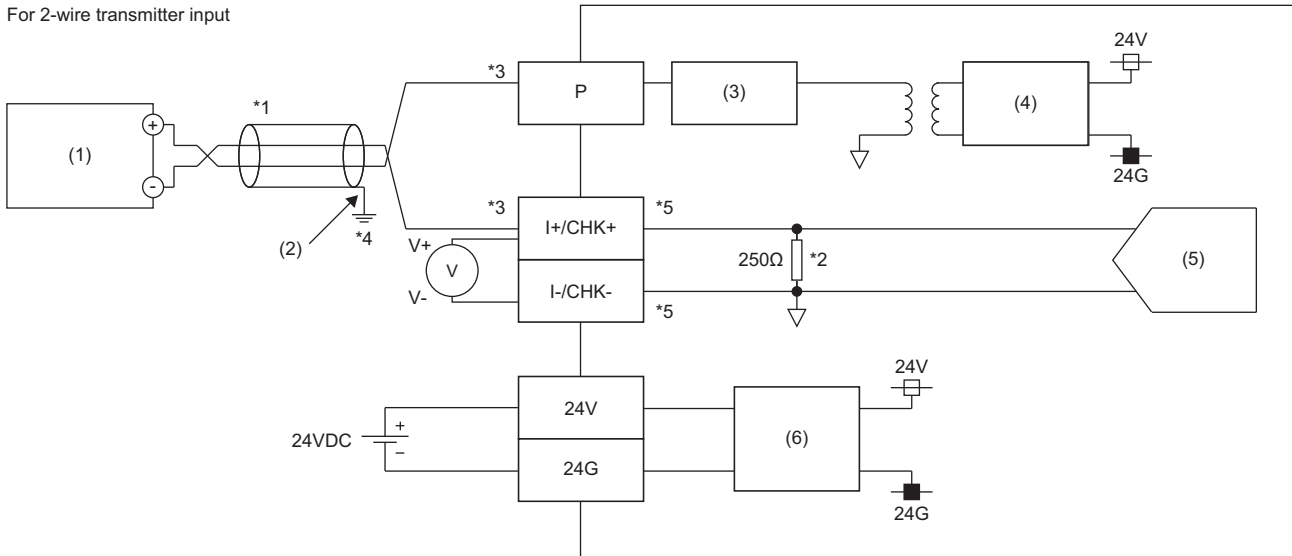
The following shows the signal layout of the connector for external devices for the A/D converter module.

Pin layout (viewed from the front of the module)	Pin number	Signal name	Pin number	Signal name
A1 □ □ B1	A1	CH1 P	B1	CH1 I+/CHK+
A2 □ □ B2	A2	—	B2	CH1 I-/CHK-
A3 □ □ B3	A3	—	B3	—
A4 □ □ B4	A4	CH2 P	B4	CH2 I+/CHK+
A5 □ □ B5	A5	—	B5	CH2 I-/CHK-
A6 □ □ B6	A6	—	B6	—
A7 □ □ B7	A7	CH3 P	B7	CH3 I+/CHK+
A8 □ □ B8	A8	—	B8	CH3 I-/CHK-
A9 □ □ B9	A9	—	B9	—
A10 □ □ B10	A10	CH4 P	B10	CH4 I+/CHK+
A11 □ □ B11	A11	—	B11	CH4 I-/CHK-
A12 □ □ B12	A12	—	B12	—
A13 □ □ B13	A13	CH5 P	B13	CH5 I+/CHK+
A14 □ □ B14	A14	—	B14	CH5 I-/CHK-
A15 □ □ B15	A15	—	B15	—
A16 □ □ B16	A16	CH6 P	B16	CH6 I+/CHK+
A17 □ □ B17	A17	—	B17	CH6 I-/CHK-
A18 □ □ B18	A18	—	B18	—
A19 □ □ B19	A19	24VDC	B19	24VDC
A20 □ □ B20	A20	24GDC	B20	24GDC

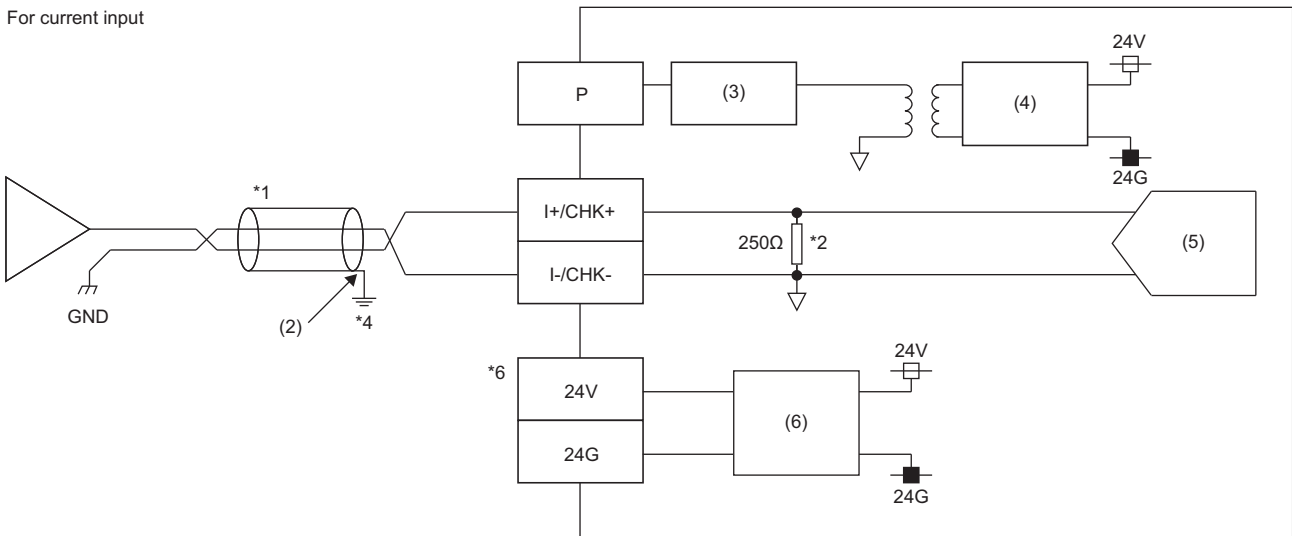
Examples of external wiring

Here are the examples of external wiring.

For 2-wire transmitter input



For current input



(1) 2-wire transmitter (4 to 20mA)

(2) Shield

(3) Current-limiting circuit

(4) Transmission path power supply

(5) A/D conversion circuit

(6) Filter

*1 For the wire, use the 2-core shielded twisted pair cable.

*2 The value indicates the input resistance of the A/D converter module.

*3 To connect to the 2-wire transmitter, connect the (P) and (I+/CHK+) terminals.

*4 Be sure to ground the shield wire of cables on each channel.

*5 The check terminals (CHK+, CHK-) are used for checking an output current from the 2-wire transmitter.

A current of 4 to 20mA is converted as a voltage of 1 to 5V and output from the check terminals. To check, connect an instrument such as a voltmeter.

The following shows the formula for conversion between a current value and a voltage value.

Voltage value (V) = Current value (mA) ÷ 1000 × 250Ω

*6 If the current input is used for all channels used, wiring of 24VDC is not required.

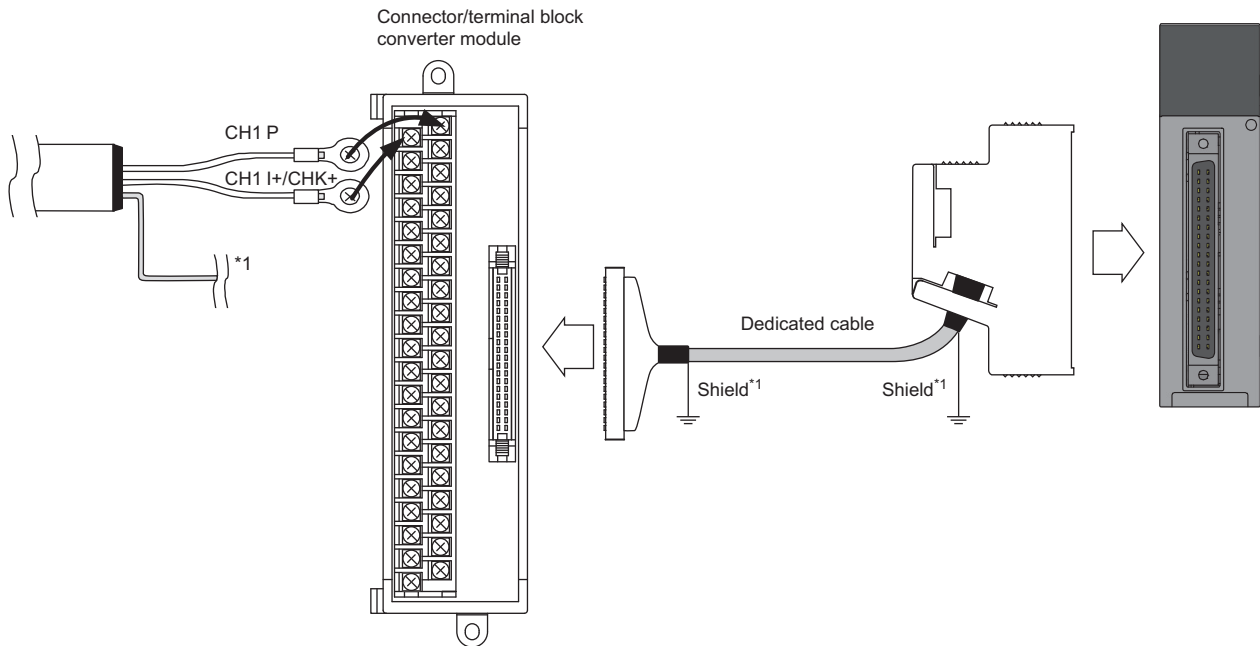


Ground the FG terminal of the power supply module.

When the connector/terminal block converter module is used

The A/D converter module allows the use of the connector/terminal block converter module and the dedicated cables.

To use the connector/terminal block converter module, wire the module as shown below.



*1 Be sure to use a shielded cable. The shield must be grounded.

Product name	Model name	Remarks	Contact
Connector/terminal block converter module	FA1-TBS40ADDG	—	Mitsubishi Electric Engineering Co., Ltd.
	FA-LTB40ADDG	—	
Dedicated cable	FA-CBL05Q66ADDG	Cable length 0.5m	
	FA-CBL10Q66ADDG	Cable length 1.0m	
	FA-CBL20Q66ADDG	Cable length 2.0m	
	FA-CBL30Q66ADDG	Cable length 3.0m	

7 OPERATION EXAMPLES

This chapter describes the programming procedure and the basic program of the A/D converter module.

7.1 Programming Procedure

Take the following steps to create a program for running the A/D converter module:

1. Set parameters.

☞ Page 32 Parameter settings

2. Create a program.

☞ Page 36 Program examples

Point

Using function blocks (FBs) reduces load at programming and improves the readability of programs. For details on the function blocks, refer to the following.

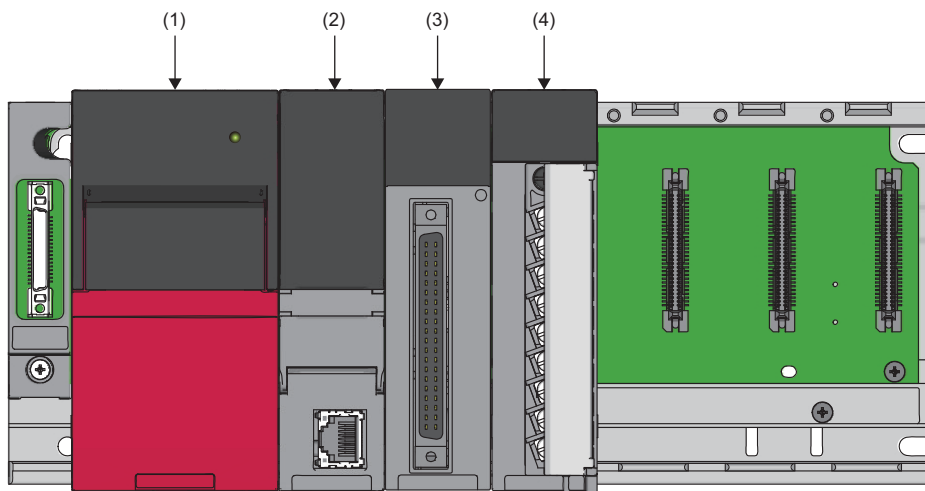
📖 MELSEC iQ-R Analog-Digital Converter Module/Digital-Analog Converter Module Function Block Reference

7.2 Program Examples

7

System configuration

The following figure is an example of the system configuration.



- (1) Power supply module (R61P)
- (2) CPU module (R120CPU)
- (3) A/D converter module (R60AD6-DG)
- (4) Input module (RX10)

Conditions in the program

This program reads digital output values from the A/D converter module's CH1, CH3, CH5, and CH6 where A/D conversion is enabled.

The A/D conversion takes place in CH1 and CH6 by means of sampling processing; in CH3 by means of averaging processing for 50 samples; and in CH5 by means of moving average for 10 samples.

Parameter settings


Perform initial settings in the parameter settings of the engineering tool. The auto refresh setting does not need to be changed here.

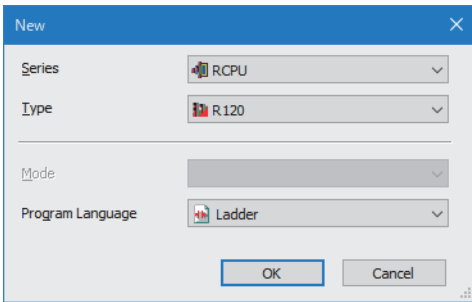
For the parameters not to be set, their default values are used.

Function	Setting item	CH1	CH2	CH3	CH4	CH5	CH6
Range switching function	Input range setting	4 to 20mA (2-wire transmitter input)	—	4 to 20mA (Current input)	—	0 to 20mA (Current input)	4 to 20mA (2-wire transmitter input)
A/D conversion enable/disable setting function	A/D conversion enable/disable setting	A/D conversion enable	A/D conversion disable	A/D conversion enable	A/D conversion disable	A/D conversion enable	A/D conversion enable
A/D conversion method	Averaging process specification	Sampling processing	—	Count average	—	Moving average	Sampling processing
	Time average/Count average/Moving average/Primary delay filter constant setting	—	—	50	—	10	—
Conversion start time setting function	Conversion start time setting	10.0s	—	3.0s	—	3.0s	3.0s
Scaling function	Scaling enable/disable setting	Disable	—	Disable	—	Enable	Disable
	Scaling upper limit value	—	—	—	—	16000	—
	Scaling lower limit value	—	—	—	—	2000	—
Shift function	Conversion value shift	0	—	0	—	2000	0
Digital clipping function	Digitalclip enable/disable setting	Disable	—	Disable	—	Enable	Disable
Warning output function (process alarm)	Warning output setting (process alarm)	Disable	—	Enable	—	Disable	Disable
	Process alarm upper upper limit value	—	—	32000	—	—	—
	Process alarm upper lower limit value	—	—	28000	—	—	—
	Process alarm lower upper limit value	—	—	4000	—	—	—
	Process alarm lower lower limit value	—	—	0	—	—	—
Warning output function (rate alarm)	Warning output setting (rate alarm)	Enable	—	Disable	—	Disable	Disable
	Rate alarm warning detection cycle setting	400 times	—	—	—	—	—
	Rate alarm upper limit value	25.0%	—	—	—	—	—
	Rate alarm lower limit value	-5.0%	—	—	—	—	—
Input signal error detection function	Input signal error detection setting	Upper limit detection	—	Disable	—	Disable	Disable
	Input signal error detection lower limit setting value	—	—	—	—	—	—
	Input signal error detection upper limit setting value	8.0%	—	—	—	—	—

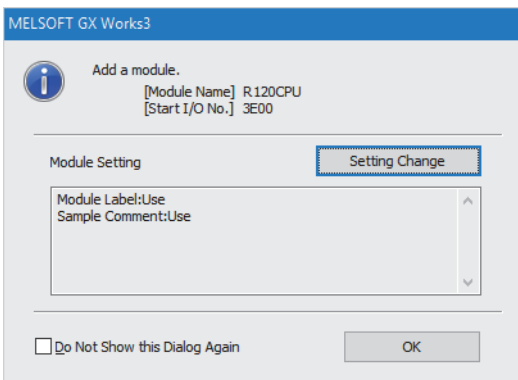
Operating procedure

1. Create a project as follows.


 [Project] ⇒ [New...]

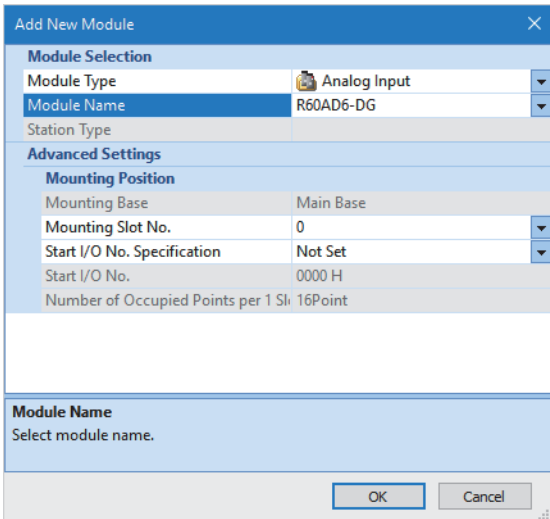


2. Click the [Setting Change] button and set to allow the module label to be used.
3. Click the [OK] button in the following window and add the module label of the CPU module.

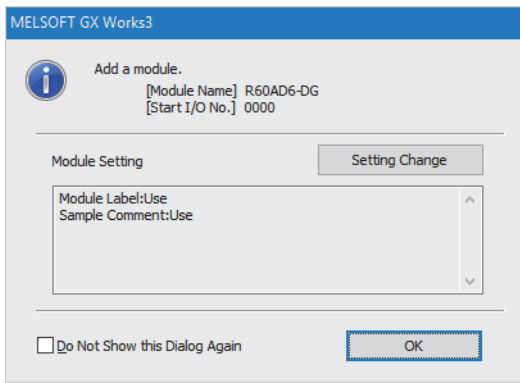


4. Add the A/D converter module as follows.

 [Navigation window] ⇒ [Parameter] ⇒ [Module Information] ⇒ Right-click ⇒ [Add New Module]



5. Set to allow the module label to be used, and add the module label of the A/D converter module.



6. Set "Basic setting" of "Module Parameter" for the A/D converter module as follows.

[Navigation window] ⇒ [Parameter] ⇒ [Module Information] ⇒ [R60AD6-DG] ⇒ [Basic setting]


Item	CH1	CH2	CH3	CH4	CH5	CH6
Range switching function	The input range of the analog input can be set for each channel and the input conversion attribute can be changed.					
Input range setting	4 to 20mA (for 2-wire) 4 to 20mA (for 2-wire) 4 to 20mA (for 2-wire) 0 to 20mA (for 2-wire) 0 to 20mA (for 2-wire) 0 to 20mA (for 2-wire)					
Operation mode setting function	The two operation modes, "Normal mode" to execute the normal A/D conversion and "Offset/gain setting mode" to execute the offset					
Operation mode setting	Normal mode (A/D conversion process)					
A/D conversion enable/disable setting function	Set whether to enable or disable the output of the A/D conversion value.					
A/D conversion enable/disable setting	A/D conversion enal	A/D conversion disa	A/D conversion enal	A/D conversion disa	A/D conversion enal	A/D conversion enal
A/D conversion method	Set the A/D conversion control method.					
Average processing setting	Sampling processin	Sampling processin	Count average	Sampling processin	Moving average	Sampling processing
Time average/Count average/Moving average/	0	0	50 times	0	10 times	0
Conversion starting time setting function	Set the time necessary from when the used 2-wire transmitter powers on until its output stabilizes.					
Conversion starting time setting (for 2-wire transmitter)	10.0 s	3.0 s	3.0 s	3.0 s	3.0 s	3.0 s

7. Set "Application setting" of "Module Parameter" for the A/D converter module as follows.

[Navigation window] ⇒ [Parameter] ⇒ [Module Information] ⇒ [R60AD6-DG] ⇒ [Application setting]

Item	CH1	CH2	CH3	CH4	CH5	CH6
Scaling function	Configure the setting for the scaling at the A/D conversion.					
Scaling enable/disable setting	Disable	Disable	Disable	Disable	Enable	Disable
Scaling upper limit value	0	0	0	0	16000	0
Scaling lower limit value	0	0	0	0	2000	0
Shift function	Configure the setting for the shift function at the A/D conversion.					
Conversion value shift	0	0	0	0	2000	0
Digital clipping function	Configure the setting for the digital clipping function at the A/D conversion.					
Digitalclip enable/disable setting	Disable	Disable	Disable	Disable	Enable	Disable
Warning output function (Process alarm)	Set an alert at the A/D conversion.					
Warning output setting (Process alarm)	Disable	Disable	Enable	Disable	Disable	Disable
Process alarm upper upper limit value	0	0	32000	0	0	0
Process alarm upper lower limit value	0	0	28000	0	0	0
Process alarm lower upper limit value	0	0	4000	0	0	0
Process alarm lower lower limit value	0	0	0	0	0	0
Warning output function (Rate alarm)	Set an alert at the A/D conversion.					
Warning output setting (Rate alarm)	Enable	Disable	Disable	Disable	Disable	Disable
Rate alarm detection cycle setting	400 times	0 times	0 times	0 times	0 times	0 times
Rate alarm upper limit value	25.0 %	0.0 %	0.0 %	0.0 %	0.0 %	0.0 %
Rate alarm lower limit value	-5.0 %	0.0 %	0.0 %	0.0 %	0.0 %	0.0 %
Input signal error detection function	Configure the setting for the input signal at the A/D conversion.					
Input signal error detection setting	Upper limit detec	Disable	Disable	Disable	Disable	Disable
Input signal error detection lower limit setting value	5.0 %	5.0 %	5.0 %	5.0 %	5.0 %	5.0 %
Input signal error detection upper limit setting value	8.0 %	5.0 %	5.0 %	5.0 %	5.0 %	5.0 %
Input signal error detection auto clear enable/disable setting	Disable					
Logging function	Configure the setting for the logging function at the A/D conversion.					
Logging enable/disable setting	Disable	Disable	Disable	Disable	Disable	Disable
Logging data setting	Digital operation	Digital operation	Digital operation	Digital operation	Digital operation	Digital operation value
Logging cycle setting value	60 ms	60 ms	60 ms	60 ms	60 ms	60 ms
Logging cycle unit setting	ms	ms	ms	ms	ms	ms
Level trigger condition setting	Disable	Disable	Disable	Disable	Disable	Disable
Logging points after trigger	500	500	500	500	500	500
Trigger data	402	602	802	1002	1202	1402
Trigger setting value	0	0	0	0	0	0
Logging read enable/disable setting	Disable	Disable	Disable	Disable	Disable	Disable
Logging read points setting value	100	100	100	100	100	100
Online module change	The module can be changed without the system being stopped.					
Auto restore of Offset/ gain setting with the module change	Enable					

8. Write the set parameter to the CPU module of the master station and reset the CPU module, or turn off and on the power supply.


 [Online] ⇔ [Write to PLC]

Label settings

The engineering tool provides functions that support the creation of a program.

The following table lists the module labels and global labels used for the program examples in this section.

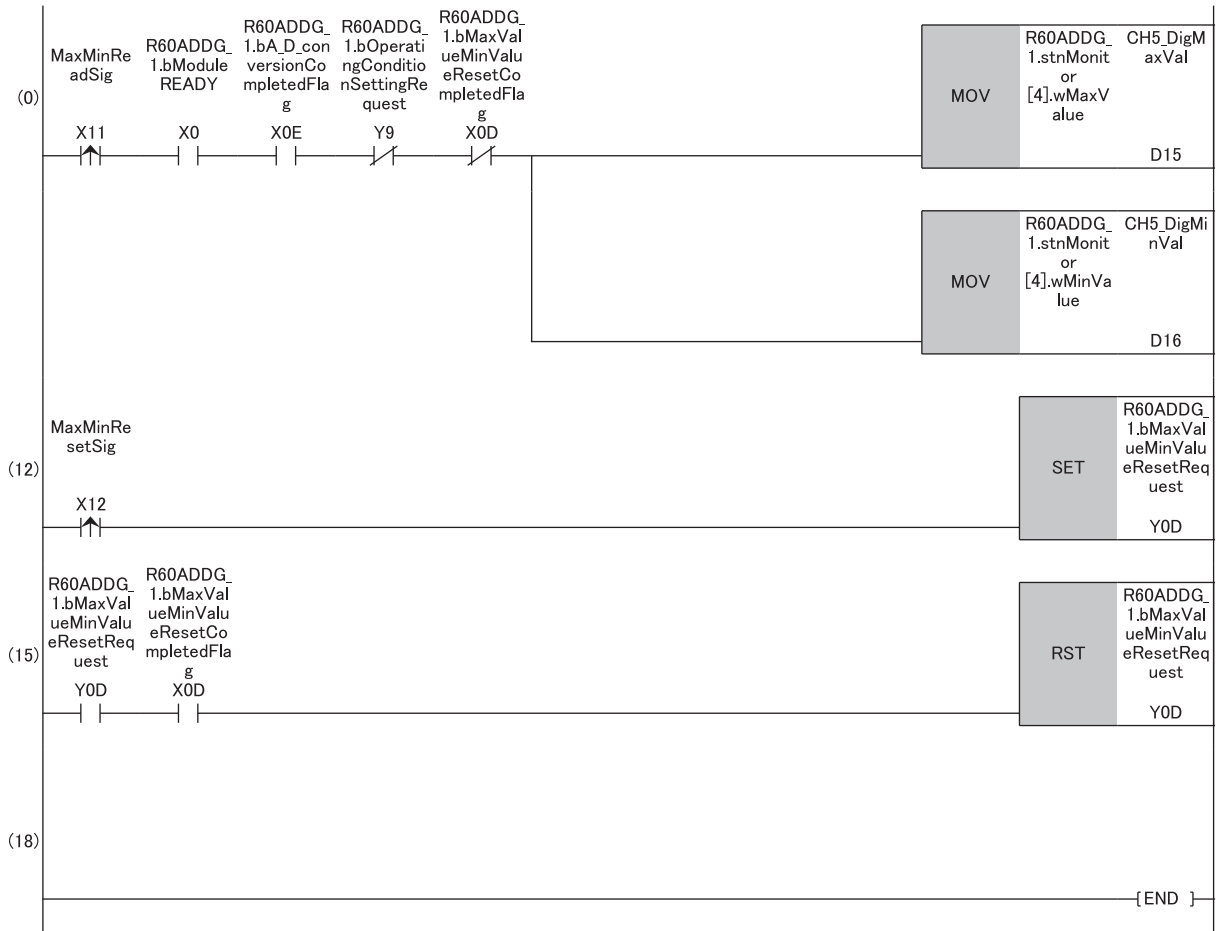
There is no need to change the settings of the module labels. For details on the global labels, refer to the following.

 MELSEC iQ-R Programming Manual (Program Design)

Classification	Label name	Description	Device																																																																																
Module label	R60ADDG_1.bModuleREADY	Module READY	X0																																																																																
	R60ADDG_1.bInputSignalErrorDetectionSignal	Input signal error detection signal	X0C																																																																																
	R60ADDG_1.bMaxValueMinValueResetCompletedFlag	Maximum value/minimum value reset completed flag	X0D																																																																																
	R60ADDG_1.bA_D_conversionCompletedFlag	A/D conversion completed flag	X0E																																																																																
	R60ADDG_1.bErrorFlag	Error flag	X0F																																																																																
	R60ADDG_1.bOperatingConditionSettingRequest	Operation condition setting request	Y9																																																																																
	R60ADDG_1.bMaxValueMinValueResetRequest	Maximum value/minimum value reset request	Y0D																																																																																
	R60ADDG_1.uA_D_conversionCompletedFlag.0	A/D conversion completed flag	—																																																																																
	R60ADDG_1.stnMonitor[0].wDigitalOutputValue	CH1 Digital output value	—																																																																																
	R60ADDG_1.uA_D_conversionCompletedFlag.2	A/D conversion completed flag	—																																																																																
	R60ADDG_1.stnMonitor[2].wDigitalOutputValue	CH3 Digital output value	—																																																																																
	R60ADDG_1.uA_D_conversionCompletedFlag.4	A/D conversion completed flag	—																																																																																
	R60ADDG_1.stnMonitor[4].wDigitalOperationValue	CH5 Digital operation value	—																																																																																
	R60ADDG_1.uA_D_conversionCompletedFlag.5	A/D conversion completed flag	—																																																																																
	R60ADDG_1.stnMonitor[5].wDigitalOutputValue	CH6 Digital output value	—																																																																																
	R60ADDG_1.stnMonitor[4].wMaxValue	CH5 Maximum value	—																																																																																
	R60ADDG_1.stnMonitor[4].wMinValue	CH5 Minimum value	—																																																																																
	R60ADDG_1.uWarningOutputFlagProcessAlarmUpperLimit.2	Warning output flag (process alarm upper limit)	—																																																																																
	R60ADDG_1.uWarningOutputFlagProcessAlarmLowerLimit.2	Warning output flag (process alarm lower limit)	—																																																																																
	R60ADDG_1.uWarningOutputFlagRateAlarmUpperLimit.0	Warning output flag (rate alarm upper limit)	—																																																																																
R60ADDG_1.uWarningOutputFlagRateAlarmLowerLimit.0	Warning output flag (rate alarm lower limit)	—																																																																																	
R60ADDG_1.uInputSignalErrorDetectionFlag.0	Input signal error detection flag	—																																																																																	
Labels to be defined	Define global labels as shown below:																																																																																		
	<table border="1"> <thead> <tr> <th></th> <th>Label Name</th> <th>Data Type</th> <th>Class</th> <th>Assign (Device/Label)</th> </tr> </thead> <tbody> <tr><td>1</td><td>CH1_DigOutVal</td><td>Word [Signed]</td><td>VAR_GLOBAL</td><td>D11</td></tr> <tr><td>2</td><td>CH3_DigOutVal</td><td>Word [Signed]</td><td>VAR_GLOBAL</td><td>D12</td></tr> <tr><td>3</td><td>CH5_DigCalcVal</td><td>Word [Signed]</td><td>VAR_GLOBAL</td><td>D13</td></tr> <tr><td>4</td><td>CH6_DigOutVal</td><td>Word [Signed]</td><td>VAR_GLOBAL</td><td>D14</td></tr> <tr><td>5</td><td>CH5_DigMaxVal</td><td>Word [Signed]</td><td>VAR_GLOBAL</td><td>D15</td></tr> <tr><td>6</td><td>CH5_DigMinVal</td><td>Word [Signed]</td><td>VAR_GLOBAL</td><td>D16</td></tr> <tr><td>7</td><td>CH3_ProcAlmUpLimit</td><td>Bit</td><td>VAR_GLOBAL</td><td>F0</td></tr> <tr><td>8</td><td>CH3_ProcAlmLowLimit</td><td>Bit</td><td>VAR_GLOBAL</td><td>F1</td></tr> <tr><td>9</td><td>CH1_RateAlmUpLimit</td><td>Bit</td><td>VAR_GLOBAL</td><td>F2</td></tr> <tr><td>10</td><td>CH1_RateAlmLowLimit</td><td>Bit</td><td>VAR_GLOBAL</td><td>F3</td></tr> <tr><td>11</td><td>CH1_InputSigErr</td><td>Bit</td><td>VAR_GLOBAL</td><td>F4</td></tr> <tr><td>12</td><td>DigitOutValSig</td><td>Bit</td><td>VAR_GLOBAL</td><td>X10</td></tr> <tr><td>13</td><td>MaxMinReadSig</td><td>Bit</td><td>VAR_GLOBAL</td><td>X11</td></tr> <tr><td>14</td><td>MaxMinResetSig</td><td>Bit</td><td>VAR_GLOBAL</td><td>X12</td></tr> <tr><td>15</td><td>ErrResetSig</td><td>Bit</td><td>VAR_GLOBAL</td><td>X13</td></tr> </tbody> </table>		Label Name	Data Type	Class	Assign (Device/Label)	1	CH1_DigOutVal	Word [Signed]	VAR_GLOBAL	D11	2	CH3_DigOutVal	Word [Signed]	VAR_GLOBAL	D12	3	CH5_DigCalcVal	Word [Signed]	VAR_GLOBAL	D13	4	CH6_DigOutVal	Word [Signed]	VAR_GLOBAL	D14	5	CH5_DigMaxVal	Word [Signed]	VAR_GLOBAL	D15	6	CH5_DigMinVal	Word [Signed]	VAR_GLOBAL	D16	7	CH3_ProcAlmUpLimit	Bit	VAR_GLOBAL	F0	8	CH3_ProcAlmLowLimit	Bit	VAR_GLOBAL	F1	9	CH1_RateAlmUpLimit	Bit	VAR_GLOBAL	F2	10	CH1_RateAlmLowLimit	Bit	VAR_GLOBAL	F3	11	CH1_InputSigErr	Bit	VAR_GLOBAL	F4	12	DigitOutValSig	Bit	VAR_GLOBAL	X10	13	MaxMinReadSig	Bit	VAR_GLOBAL	X11	14	MaxMinResetSig	Bit	VAR_GLOBAL	X12	15	ErrResetSig	Bit	VAR_GLOBAL	X13		
	Label Name	Data Type	Class	Assign (Device/Label)																																																																															
1	CH1_DigOutVal	Word [Signed]	VAR_GLOBAL	D11																																																																															
2	CH3_DigOutVal	Word [Signed]	VAR_GLOBAL	D12																																																																															
3	CH5_DigCalcVal	Word [Signed]	VAR_GLOBAL	D13																																																																															
4	CH6_DigOutVal	Word [Signed]	VAR_GLOBAL	D14																																																																															
5	CH5_DigMaxVal	Word [Signed]	VAR_GLOBAL	D15																																																																															
6	CH5_DigMinVal	Word [Signed]	VAR_GLOBAL	D16																																																																															
7	CH3_ProcAlmUpLimit	Bit	VAR_GLOBAL	F0																																																																															
8	CH3_ProcAlmLowLimit	Bit	VAR_GLOBAL	F1																																																																															
9	CH1_RateAlmUpLimit	Bit	VAR_GLOBAL	F2																																																																															
10	CH1_RateAlmLowLimit	Bit	VAR_GLOBAL	F3																																																																															
11	CH1_InputSigErr	Bit	VAR_GLOBAL	F4																																																																															
12	DigitOutValSig	Bit	VAR_GLOBAL	X10																																																																															
13	MaxMinReadSig	Bit	VAR_GLOBAL	X11																																																																															
14	MaxMinResetSig	Bit	VAR_GLOBAL	X12																																																																															
15	ErrResetSig	Bit	VAR_GLOBAL	X13																																																																															

Program example 2

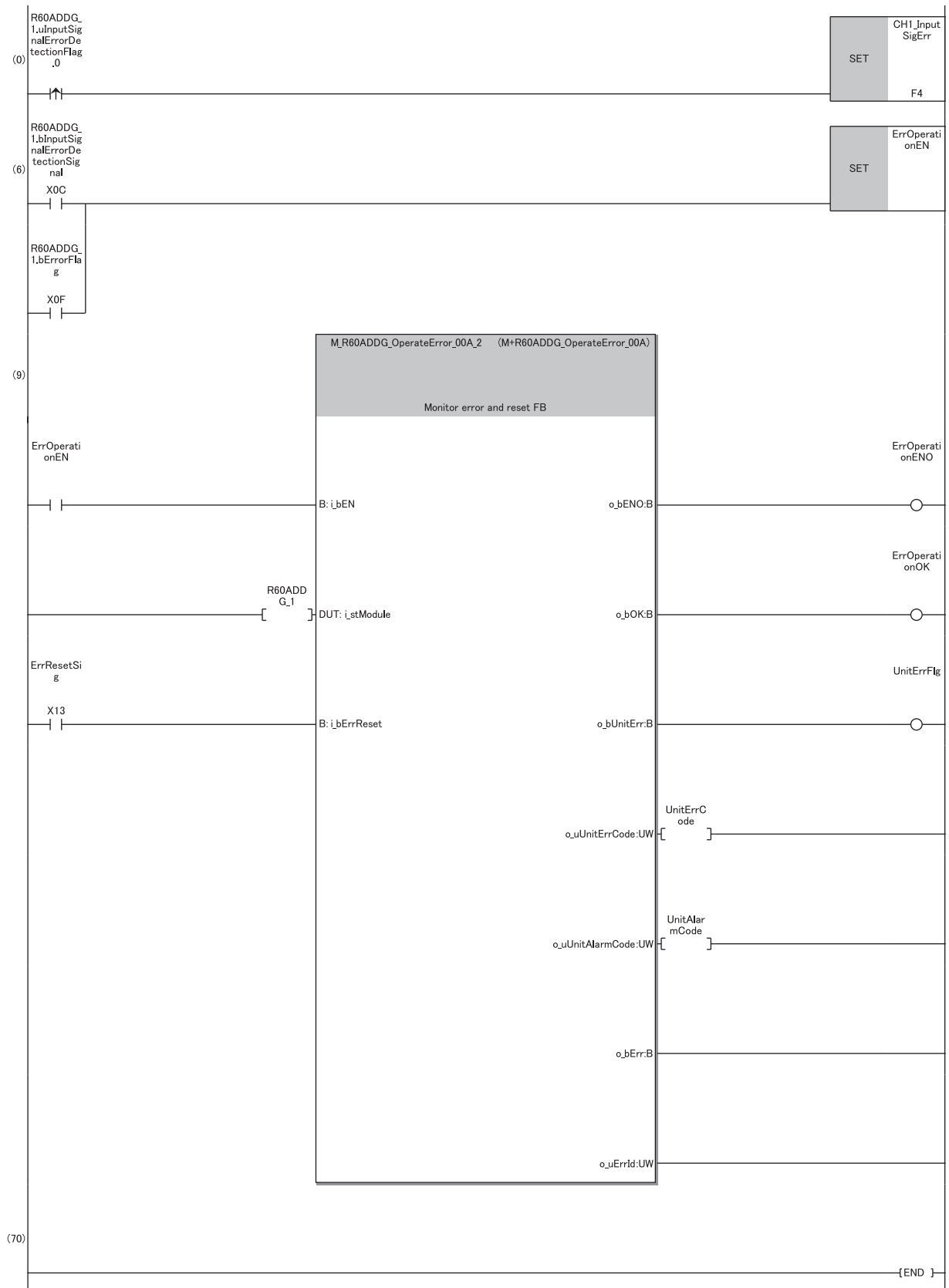
- This program is an example to read the maximum and minimum values of CH5, which in turn are cleared.



- (0) CH5 Maximum value and CH5 Minimum value are to be read.
 (12)'Maximum value/minimum value reset request' (YD) is to be turned on.
 (15)'Maximum value/minimum value reset request' (YD) is to be turned off.

Program example 5

- This program is an example to display the latest error code if an input signal error of CH1 is detected or an error occurs. After that, the program clears the error flag and the stored error code.



- (0) The processing at the time when an input signal error is detected in CH1 is to be performed.
 (6) Error manipulation start flag is to be turned on.

8 OFFSET/GAIN SETTING

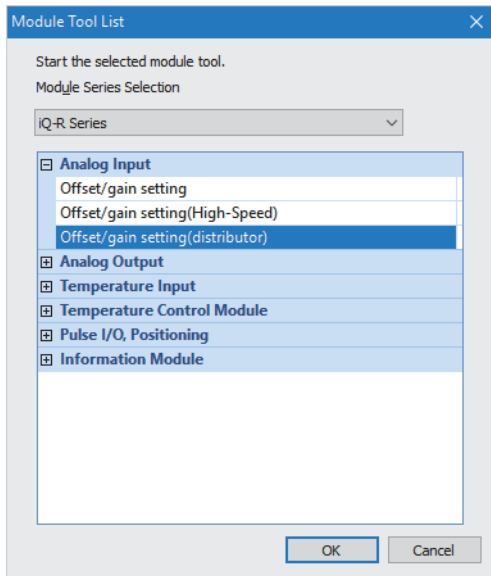
Using the user range setting requires the offset/gain setting.

Access to the offset/gain setting window in the engineering tool to set the offset and gain values.

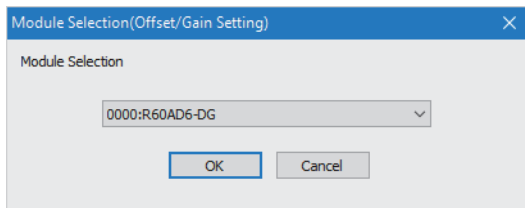
8.1 Setting Procedure

The setting procedure for the offset/gain setting of the A/D converter module is as follows:

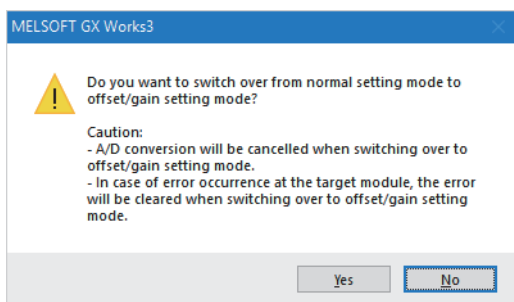
[Tool] ⇒ [Module Tool List]



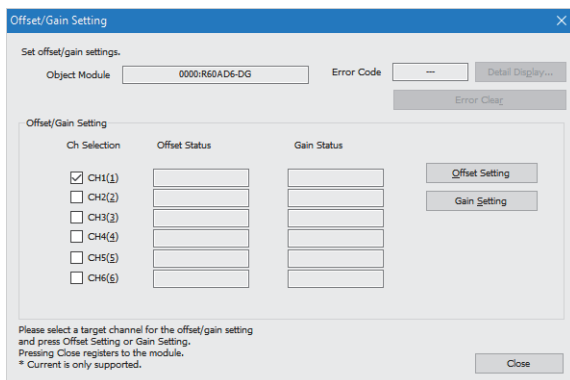
1. In "Analog Input", select "Offset/gain Setting" and click the [OK] button.



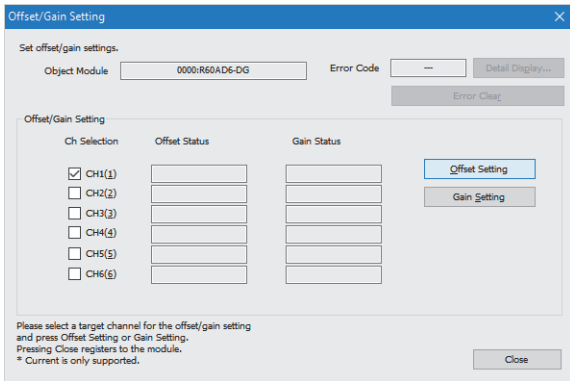
2. Select the target module for the offset/gain setting, and click the [OK] button.



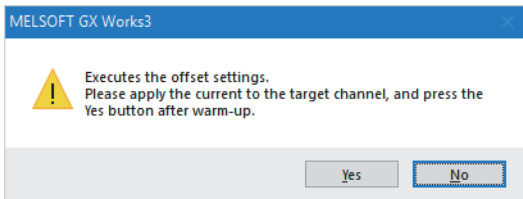
3. Click the [Yes] button.



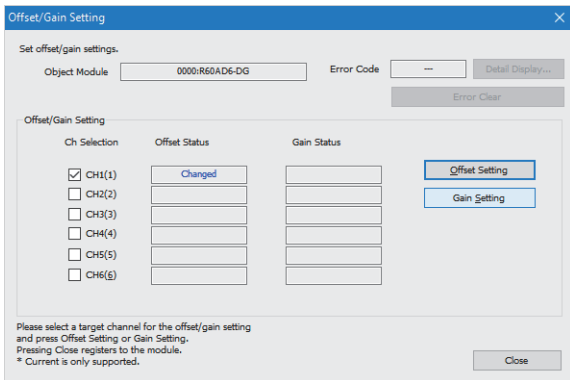
4. Mark the checkbox of the channel where offset and gain values are to be set.



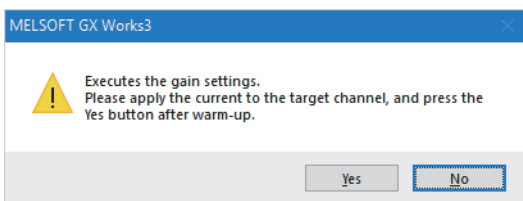
5. Click the [Offset Setting] button.



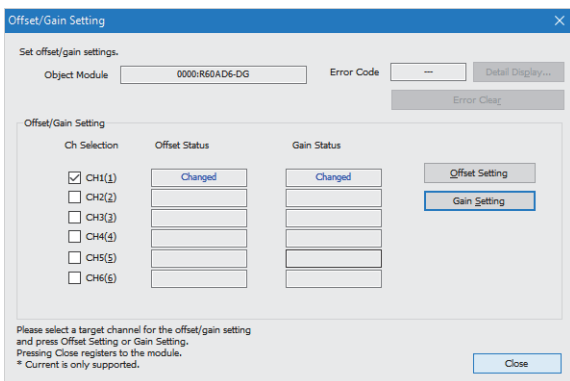
6. Apply the offset current to the corresponding channel, and click the [Yes] button.



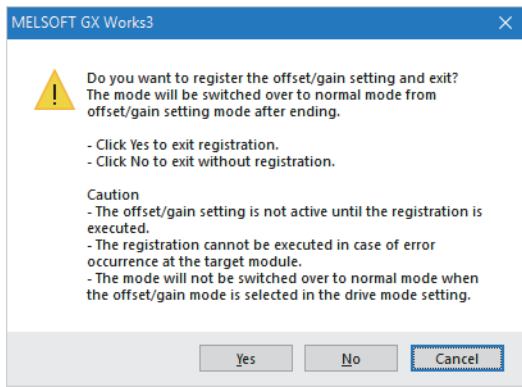
7. Check that "Offset Status" has changed to "Changed", and click the [Gain Setting] button.



8. Apply the gain current to the corresponding channel, and click the [Yes] button.



9. Check that "Gain Status" has changed to "Changed", and click the [Close] button.



10. Click the [Yes] button.

APPENDICES

Appendix 1 I/O Conversion Characteristics

The I/O conversion characteristics of A/D conversion are expressed by the slope of the straight line connecting the offset value and the gain value, both of which are used when an analog signal (current input) from outside the programmable controller is converted to the corresponding digital value.

Offset value

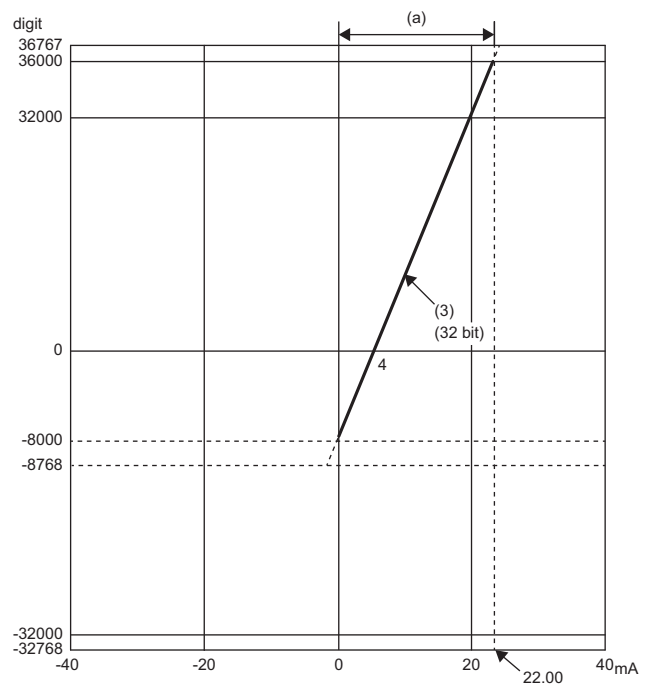
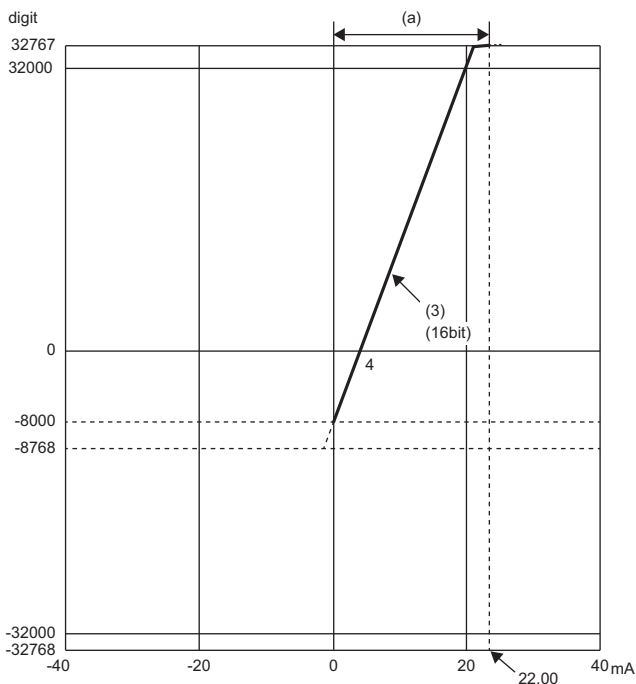
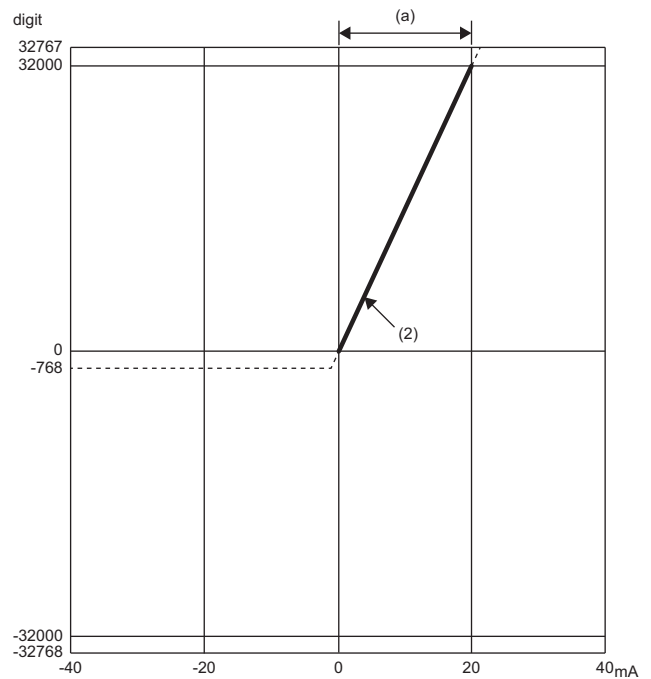
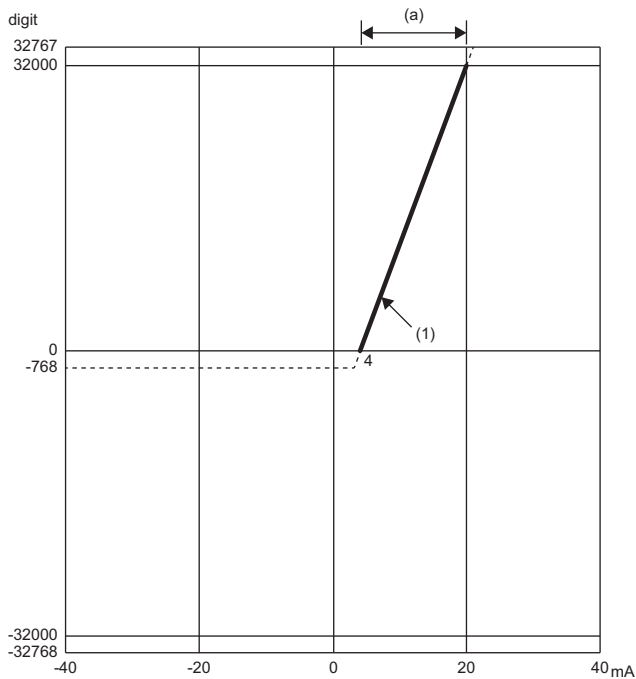
An analog input value (current) which turns 0 as a digital output value after conversion

Gain value

An analog input value (current) which turns 32000 as a digital output value after conversion

Current input characteristics

The following shows the list of analog input ranges at the current input and the graphs of each of the current input characteristics.



digit: Digital output value

(1) (16bit): The line shows (3) for 16 bit.

(3) (32bit): The line shows (3) for 32 bit.

(a): Practical analog input range

No.	Analog input range setting	Offset value	Gain value	Digital output value ^{*1}	Resolution
(1)	4 to 20mA	4mA	20mA	0 to 32000	500.0nA
(2)	0 to 20mA	0mA	20mA		625.0nA
(3)	4 to 20mA (extended mode)	4mA	20mA	-8000 to 36000	500.0nA

No.	Analog input range setting	Offset value	Gain value	Digital output value*1	Resolution
—	User range setting	*2	*2	0 to 32000	466.0nA*3

*1 If an analog input value exceeds the range of digital output value, the digital output value is fixed to the maximum or minimum value.

*2 Set the offset value and gain value in the user range setting within a range satisfying the following conditions. Failure to satisfy the conditions may not result in proper A/D conversion.

Gain value \leq 24mA, offset value \geq 0mA

$((\text{Gain value}) - (\text{Offset value})) \geq 15\text{mA}$

*3 Maximum resolution in the user range setting

Analog input range setting	Digital output value	
	Minimum	Maximum
4 to 20mA	-768	32767
0 to 20mA		
4 to 20mA (extended mode)	-8768	36767
User range setting	-768	32767

Point

- Use the values in the solid line region in the graph of current input characteristics. If a value in the dotted region is used, the resolution and accuracy may not fall within the range of the performance specifications. (Set values within the practical range of the analog input and the digital output at each input range.)
- Do not set the voltage over 30mA. Doing so can cause breakdown of the elements.

Appendix 2 Accuracy

The accuracy of A/D conversion is the accuracy for the maximum value of digital output value. The accuracy is given by the following formula:

$$\text{Accuracy} = (\text{Reference accuracy}) + (\text{Temperature coefficient}) \times (\text{Temperature variation})$$

- Reference accuracy: The accuracy at an ambient temperature when the offset/gain setting is configured ($\pm 0.1\%$ (± 32 digits))
- Temperature coefficient: The accuracy based on a temperature change of 1°C ($0.0035\%/^\circ\text{C}$ (± 1.12 digits))

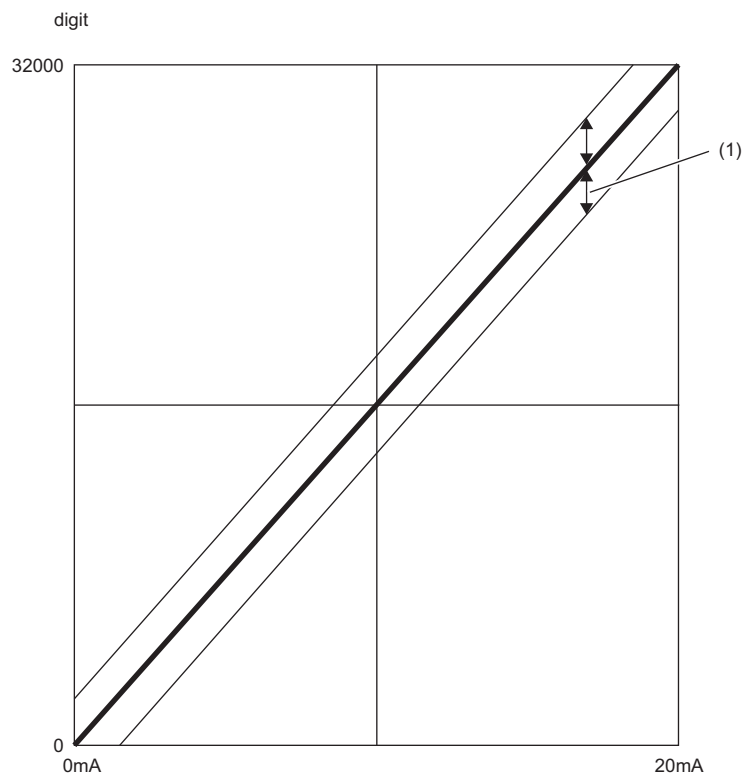
An output characteristic change resulting from a change in the offset/gain setting or the analog input range does not sacrifice the reference accuracy and temperature coefficient, which are maintained within the described range of the performance specifications

(except for the conditions under noise influence).

Ex.

Accuracy when the temperature changes by 5°C , from 25°C to 30°C

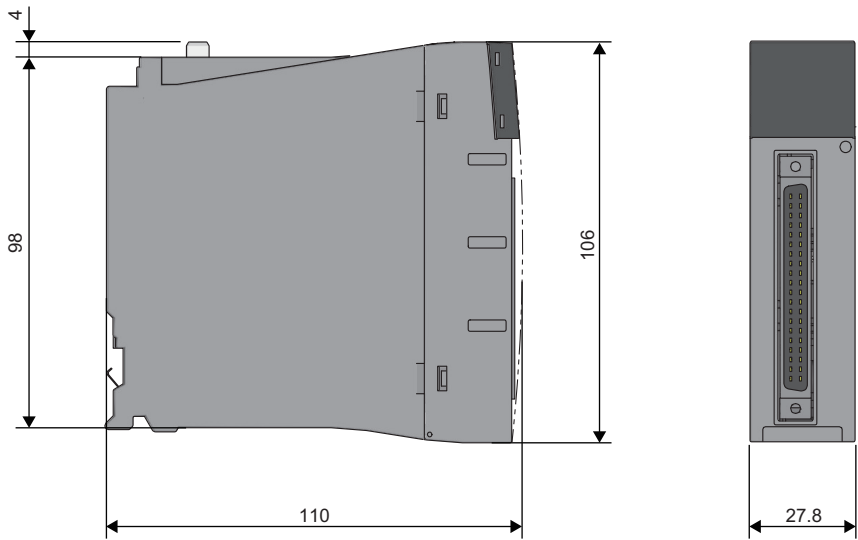
$$(\pm 0.1\%) + (\pm 0.0035\%/^\circ\text{C} \times 5^\circ\text{C}) = \pm 0.1175\% (\pm 38 \text{ digits})$$



digit: Digital output value
(1) Voltage fluctuation range

Appendix 3 External Dimensions

The following figure shows the external dimensions of the A/D converter module.



(Unit: mm)

INDEX

A

Accuracy of A/D conversion	46
ALM LED	17

C

Connector for external devices	27
Connector/terminal block converter module	30
Current input characteristics	44

D

Dedicated cable	30
---------------------------	----

E

ERR LED	17
-------------------	----

F

Function block (FB)	31
-------------------------------	----

G

Gain value	43
----------------------	----

O

Offset value	43
Offset/gain setting	40

R

RUN LED	17
-------------------	----

MEMO

REVISIONS

*The manual number is given on the bottom left of the back cover.

Revision date	*Manual number	Description
May 2020	SH(NA)-082298ENG-A	First edition
February 2024	SH(NA)-082298ENG-B	■Added or modified parts SAFETY PRECAUTIONS, Section 6.1, 7.2

Japanese manual number: SH-082297-B

This manual confers no industrial property rights or any rights of any other kind, nor does it confer any patent licenses. Mitsubishi Electric Corporation cannot be held responsible for any problems involving industrial property rights which may occur as a result of using the contents noted in this manual.

© 2020 MITSUBISHI ELECTRIC CORPORATION

WARRANTY

Please confirm the following product warranty details before using this product.

1. Gratis Warranty Term and Gratis Warranty Range

If any faults or defects (hereinafter "Failure") found to be the responsibility of Mitsubishi occurs during use of the product within the gratis warranty term, the product shall be repaired at no cost via the sales representative or Mitsubishi Service Company.

However, if repairs are required onsite at domestic or overseas location, expenses to send an engineer will be solely at the customer's discretion. Mitsubishi shall not be held responsible for any re-commissioning, maintenance, or testing on-site that involves replacement of the failed module.

[Gratis Warranty Term]

The gratis warranty term of the product shall be for one year after the date of purchase or delivery to a designated place. Note that after manufacture and shipment from Mitsubishi, the maximum distribution period shall be six (6) months, and the longest gratis warranty term after manufacturing shall be eighteen (18) months. The gratis warranty term of repair parts shall not exceed the gratis warranty term before repairs.

[Gratis Warranty Range]

- (1) The range shall be limited to normal use within the usage state, usage methods and usage environment, etc., which follow the conditions and precautions, etc., given in the instruction manual, user's manual and caution labels on the product.
- (2) Even within the gratis warranty term, repairs shall be charged for in the following cases.
 1. Failure occurring from inappropriate storage or handling, carelessness or negligence by the user. Failure caused by the user's hardware or software design.
 2. Failure caused by unapproved modifications, etc., to the product by the user.
 3. When the Mitsubishi product is assembled into a user's device, Failure that could have been avoided if functions or structures, judged as necessary in the legal safety measures the user's device is subject to or as necessary by industry standards, had been provided.
 4. Failure that could have been avoided if consumable parts (battery, backlight, fuse, etc.) designated in the instruction manual had been correctly serviced or replaced.
 5. Failure caused by external irresistible forces such as fires or abnormal voltages, and Failure caused by force majeure such as earthquakes, lightning, wind and water damage.
 6. Failure caused by reasons unpredictable by scientific technology standards at time of shipment from Mitsubishi.
 7. Any other failure found not to be the responsibility of Mitsubishi or that admitted not to be so by the user.

2. Onerous repair term after discontinuation of production

- (1) Mitsubishi shall accept onerous product repairs for seven (7) years after production of the product is discontinued. Discontinuation of production shall be notified with Mitsubishi Technical Bulletins, etc.
- (2) Product supply (including repair parts) is not available after production is discontinued.

3. Overseas service

Overseas, repairs shall be accepted by Mitsubishi's local overseas FA Center. Note that the repair conditions at each FA Center may differ.

4. Exclusion of loss in opportunity and secondary loss from warranty liability

Regardless of the gratis warranty term, Mitsubishi shall not be liable for compensation to:

- (1) Damages caused by any cause found not to be the responsibility of Mitsubishi.
- (2) Loss in opportunity, lost profits incurred to the user by Failures of Mitsubishi products.
- (3) Special damages and secondary damages whether foreseeable or not, compensation for accidents, and compensation for damages to products other than Mitsubishi products.
- (4) Replacement by the user, maintenance of on-site equipment, start-up test run and other tasks.

5. Changes in product specifications

The specifications given in the catalogs, manuals or technical documents are subject to change without prior notice.

TRADEMARKS

The company names, system names and product names mentioned in this manual are either registered trademarks or trademarks of their respective companies.

In some cases, trademark symbols such as [™] or [®] are not specified in this manual.

SH(NA)-082298ENG-B(2402)MEE

MODEL: R60AD6-DG-U-IN-E

MODEL CODE: 13JX3E

mitsubishi electric corporation

HEAD OFFICE : TOKYO BUILDING, 2-7-3 MARUNOUCHI, CHIYODA-KU, TOKYO 100-8310, JAPAN
NAGOYA WORKS : 1-14, YADA-MINAMI 5-CHOME, HIGASHI-KU, NAGOYA, JAPAN

When exported from Japan, this manual does not require application to the
Ministry of Economy, Trade and Industry for service transaction permission.

Specifications subject to change without notice.