

# [Contents]

Safety Precautions  
Revisions  
Introduction  
Parts of This Manual  
How to Use This Manual  
Abbreviations



## **Getting started**

### **1 Getting started**

---

- 1.1 What GPPW can do ..... 1- 1
- 1.2 Easy installation of GPPW ..... 1- 5
- 1.3 Required items to gain access to PLC ..... 1- 9
- 1.4 Operation flow ..... 1-11



## **Basics**

### **1 Introduction**

---

- 1.1 How to use the mouse ..... 2- 1
- 1.2 Common mouse operations ..... 2- 3
- 1.3 Screen configuration ..... 2- 7

### **2 Basics for GPPW operations**

---

- 2.1 What is a "project"? ..... 2- 9
- 2.2 Starting GPPW ..... 2-11
- 2.3 Ending a GPPW session ..... 2-13
- 2.4 Designation of project ..... 2-15
- 2.5 Frequent operations ..... 2-19

**3**  
**Offline  
operations**

**1** **Creating a circuit**

---

- 1.1 Creating a new project ..... 3- 1
- 1.2 Creating a circuit with list expressions (mnemonic language) .. 3- 3
- 1.3 Creating a circuit with tool buttons ..... 3- 7
- 1.4 Converting a created program ..... 3-11
- 1.5 Creating a circuit with list commands..... 3-13
- 1.6 Saving a created project ..... 3-15
- 1.7 Reading a saved project ..... 3-17

**2** **Editing a circuit**

---

- 2.1 Correcting part of a circuit ..... 3-19
- 2.2 Cutting and copying a circuit block ..... 3-21
- 2.3 Inserting or deleting a line ..... 3-25
- 2.4 Creating and deleting a ruled line ..... 3-27

**3** **Searching a circuit**

---

- 3.1 Searching with a designated device ..... 3-29
- 3.2 Searching with a step No. .... 3-31

**4** **Replacing within a circuit**

---

- 4.1 Replacing with a designated device ..... 3-33
- 4.2 Replacing open contact with close contact and vice versa ..... 3-37

**5** **Explaining circuit components**

---

- 5.1 Creating device comments ..... 3-41
- 5.2 Creating statements for each circuit block ..... 3-45
- 5.3 Creating a note for coil and application instruction ..... 3-47

**6** **Editing comments**

---

- 6.1 Correcting device comments ..... 3-49
- 6.2 Deleting (cutting) device comments ..... 3-51
- 6.3 Copying device comments..... 3-55
- 6.4 Searching statements and notes ..... 3-57
- 6.5 Correcting statements and notes ..... 3-59

**3**  
**Offline  
operations**

**4**  
**Online  
operations**

**5**  
**Useful  
functions**

<b>7</b>	<b>Printing</b>	
7.1	Printing a circuit	3-61
7.2	Printing contacts or coils in use	3-63
7.3	Printing the device in use	3-65
7.4	Printing a list of device comments in use	3-67
<b>1</b>	<b>Writing and reading to/from the PLC CPU</b>	
1.1	Writing data to the PLC CPU	4- 1
<b>2</b>	<b>Monitoring PLC status</b>	
2.1	Monitoring circuit status	4- 4
2.2	Monitoring designated devices	4- 6
<b>3</b>	<b>Debugging a created circuit</b>	
3.1	Turning ON/OFF contact positively	4- 8
3.2	Executing a program step by step	4-10
<b>4</b>	<b>Online change</b>	
4.1	Writing data during a run of the PLC CPU	4-12
4.2	Changing data during monitoring, and writing during a run	4-14
<b>1</b>	<b>Offline operations</b>	
1.1	Associating multiple programs	5- 1
1.2	Changing function keys in GPPA, GPPQ, and MEDOC formats	5- 5
1.3	Setting the designated projects for quick start-up	5- 7
1.4	Converting files from GPPA format to GPPW format	5- 9
1.5	Changing project PLC type	5-17
<b>2</b>	<b>Operations with Windows functions</b>	
2.1	Using Excel files as device comment	5-19
2.2	Using Word files as device comment	5-21
2.3	Opening and editing multiple projects	5-23



## ***Useful functions***

## ***Appendix***

### **3** **Using Logic Test functions**

---

- 3.1 Learning operation procedures ..... 5-27
- 3.2 Creating emulation of I/O and special unit ..... 5-29
- 3.3 Monitoring device status ..... 5-33

### **Appendix**

---

- App.1 Short cut key list ..... A- 1
- App.2 Circuit creation list ..... A- 7

Index

# Part 2

2

## Basics

### 1. Introduction

- 1.1 How to use the mouse ..... 2- 1
- 1.2 Common mouse operations ..... 2- 3
- 1.3 Screen configuration ..... 2- 7

### 2. Basics for GPPW operations

- 2.1 What is a "project"? ..... 2- 9
- 2.2 Starting GPPW ..... 2-11
- 2.3 Ending a GPPW session ..... 2-13
- 2.4 Designation of project ..... 2-15
- 2.5 Frequent operations ..... 2-19

2

## 2 Basics

### 1 Introduction

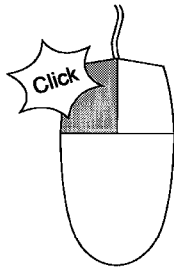
The most frequent operation in GPPW is using a mouse. A mouse is an indispensable item for using the Windows software package.

This chapter explains basic mouse operations and GPPW screen configurations.

#### 1.1 How to use the mouse

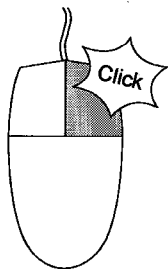
Click, double click and drag with a mouse is explained.

#### —Left click (hereinafter referred to as click)—



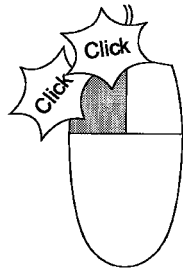
Press the left button of the mouse without moving the mouse position.

#### —Right click—



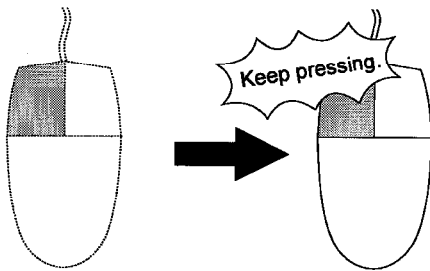
Press the right button of the mouse without moving the mouse position.

**—Double click—**



Press the left button of the mouse twice quickly without moving the mouse position. This operation is for the left button only, not for the right button.

**—Drag—**



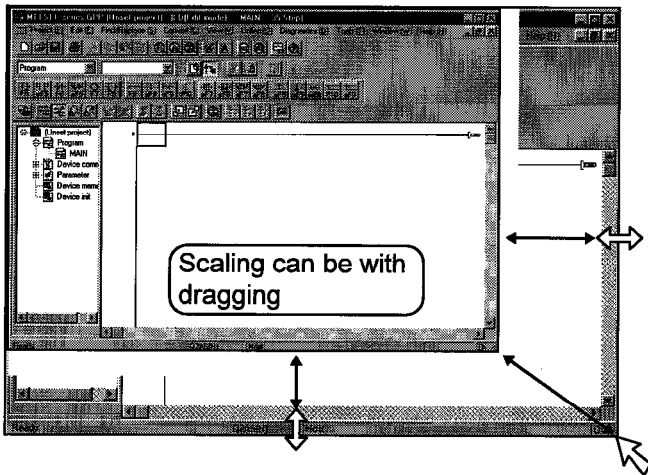
Move the mouse with the left button pressed. This operation is for the left button only, not for the right button.

# 2 Basics

## 1.2 Common mouse operations

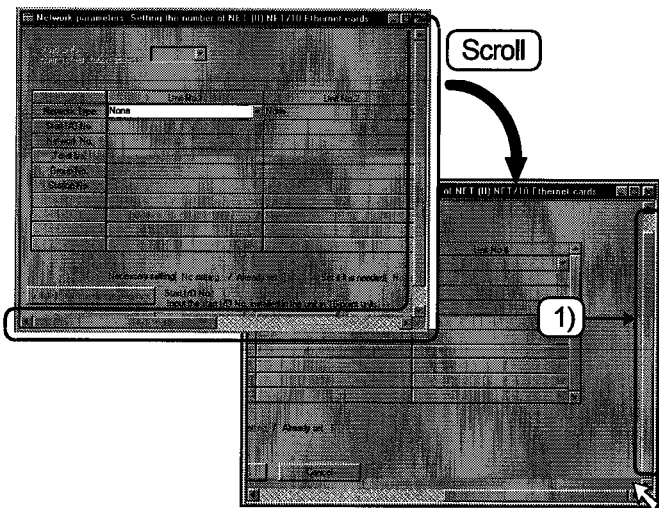
This section explains common mouse operations such as tab changes, menu selections and dialog box operations.

### Scaling of a window



Drag the edge of the window with a mouse to scale the window.

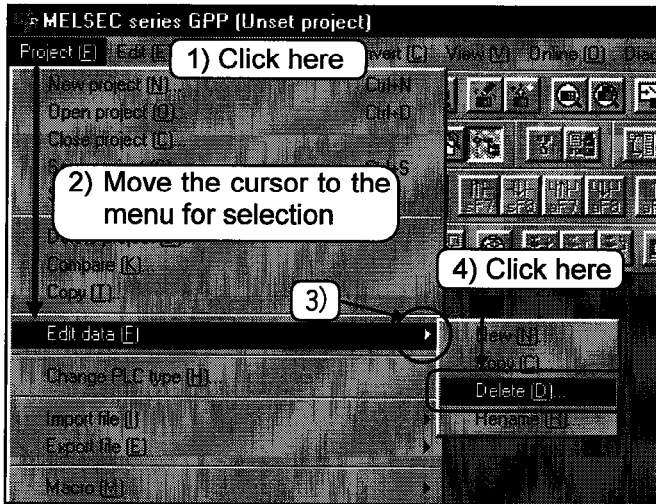
### Scroll bar operation



Keep clicking  mark to scroll the screen and display the hidden part. Dragging 1) can also scroll the screen.

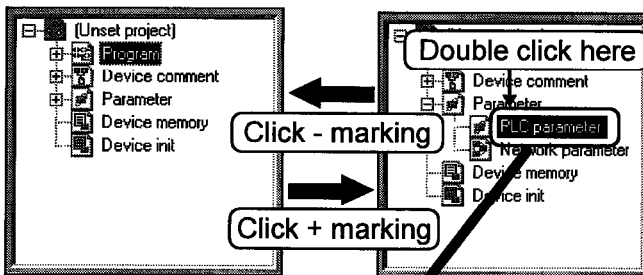


## Menu operations

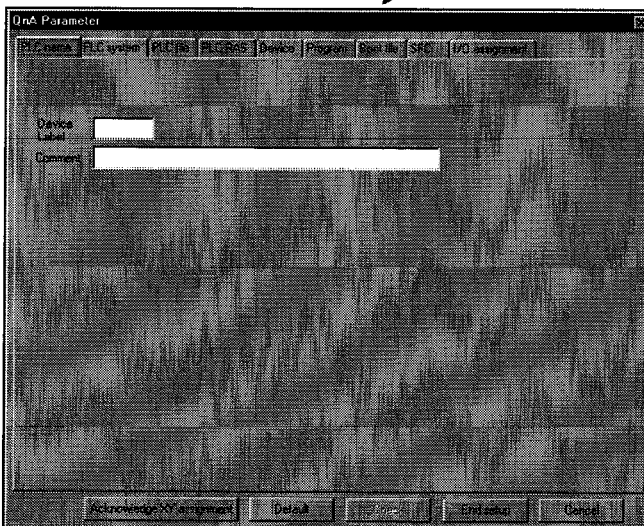


- 1) Click the desired menu.
- 2) Move the cursor to the menu for selection.
- 3) Additional menus are displayed at ►.
- 4) Click the menu for execution.

## Operation of project data list

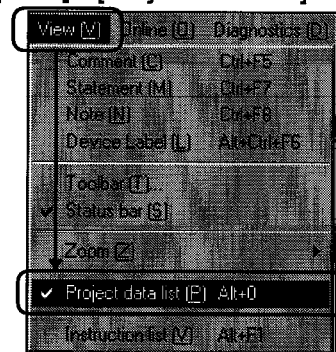


Click + marking on the project data list. The details for the item are displayed. Double click one of the details and the corresponding screen appears.



### Hint!

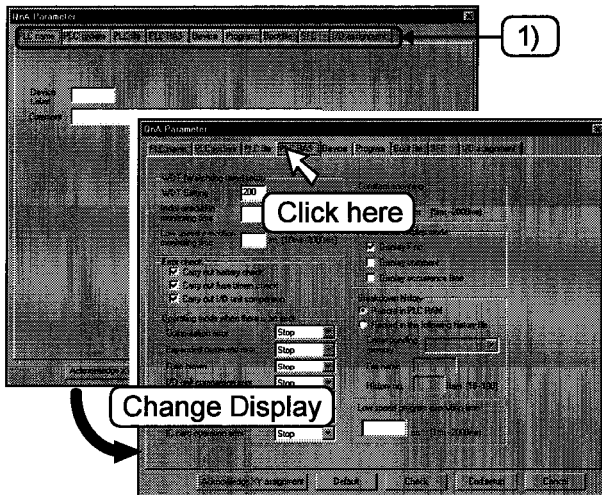
If the project data list is not displayed, click [View] - [Project data list] menu.



# 2 Basics

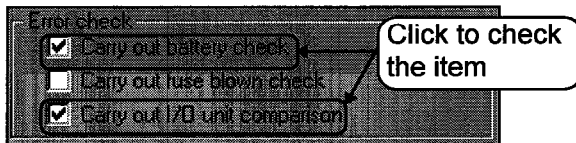
## —Operation of dialog box—

### (1) Tab change



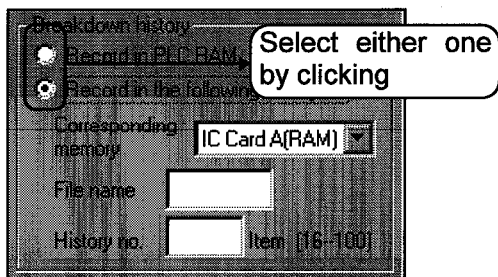
Area 1) as shown in a dialog box is called tab. Click this tab to change items for settings.

### (2) Check box ON/OFF



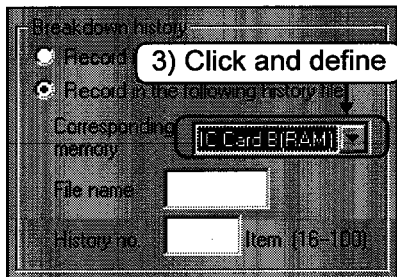
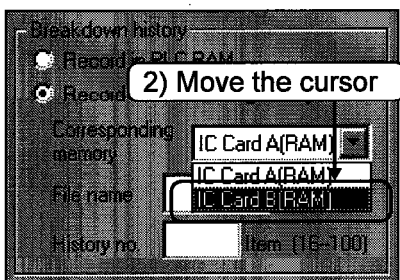
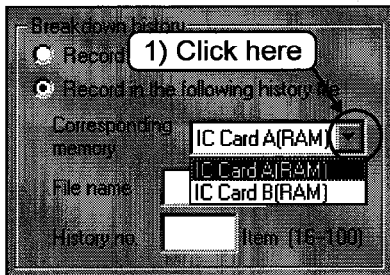
marking by clicking makes the item effective. Clicking on the item with  marking cancels checking and makes the item ineffective.

### (3) Setting of radio button



Radio button is a button for selecting one of multiple items. Click one item to be effective and the previous item is canceled.

#### (4) Setting of list box



This is to select one out of multiple items.

1) Click  to display multiple items.

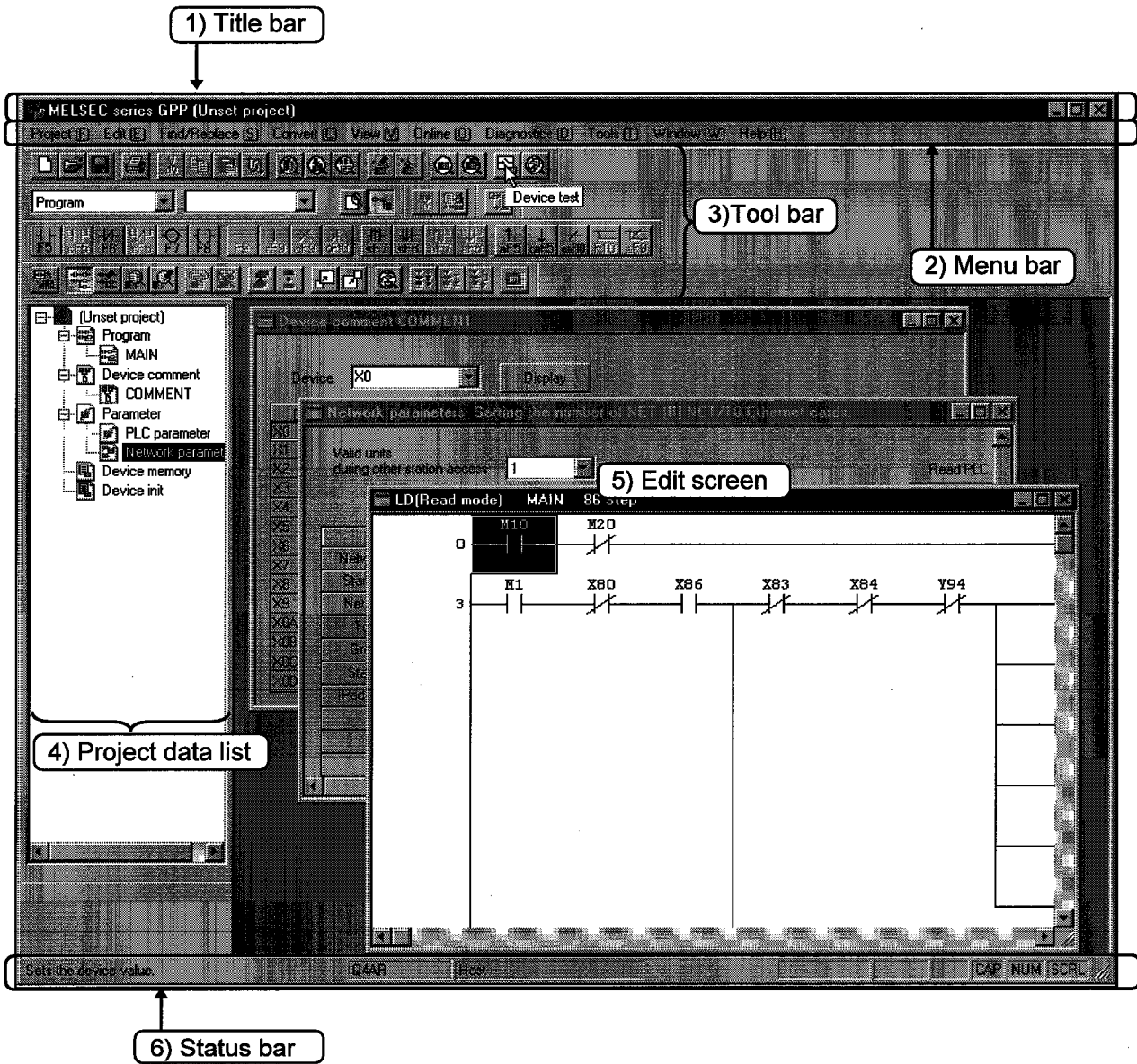
2) Move the cursor to the item to be set.

3) When the item to be set is determined, click and define the item.

# 2 Basics

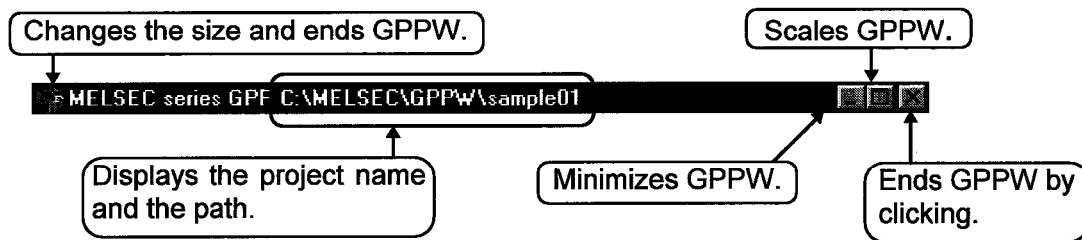
## 1.3 Screen configuration

This section explains how GPPW screens are configured.



### 1) Title bar

Displays the project name which is open.



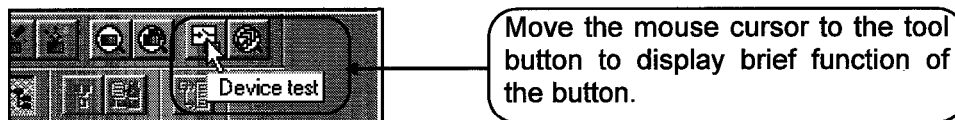
### 2) Menu bar

This is most frequently used in GPPW operations.

Select the menu and display the drop down menu. Various functions can be used from the drop down menu.

### 3) Tool bar

Frequent used functions are shown in buttons. This facilitates speedy operations.



### 4) Project data list

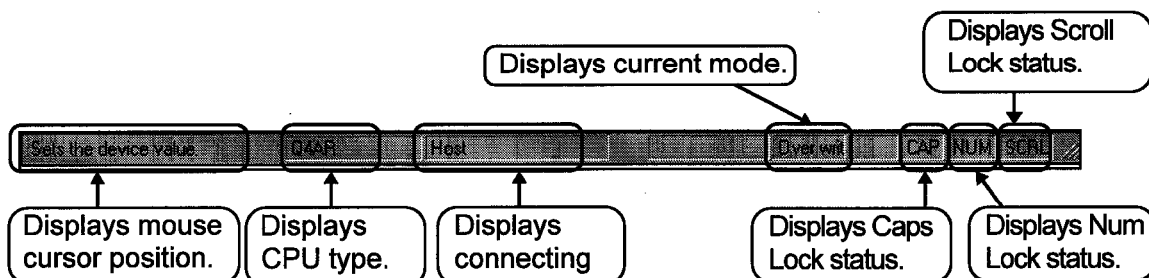
The Circuit creation screen, dialog box, etc. can be directly read. Data in the project is listed in each category.

### 5) Edit screen

The Circuit creation screen and comment creation screen are displayed for settings of circuit, comment and parameter. Various screens are displayed depending on the edit details.

### 6) Status bar

Status information of GPPW is displayed.



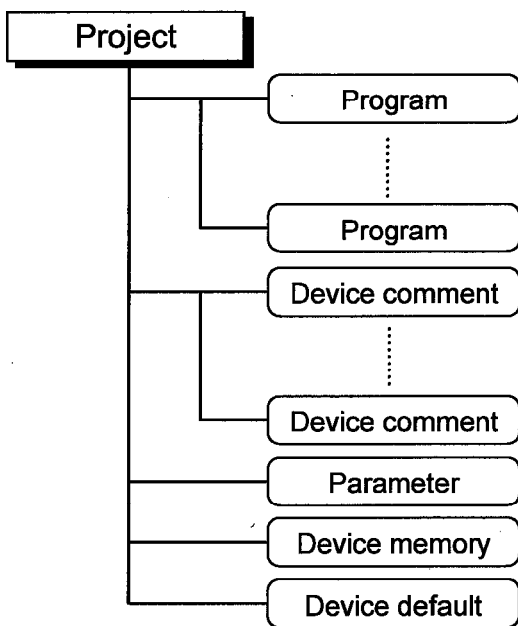
# 2 Basics

## 2 Basics for GPPW operations

To perform any operation with GPPW, you must understand its basic principles. This chapter explains the basics required for GPPW operations.

### 2.1 What is a "project"?

This section explains a GPPW "project."



A project is a collection of components including a program, device comments, parameter, device memory and device default (for QnACPU only).

Item	Details
Program	Sequence program required for operation of PLC CPU.
Device comment	Comment for device of sequence program. Two types of comments are available; "Common comment" which is common to projects, and "Comment for each program" which varies on each program.
Parameter	Settings for the network or the device range.
Device memory	Displays the current device value. Input of a new value changes the device value.
Device default	Value used as a default at the start-up of PLC CPU. (for QnACPU only)

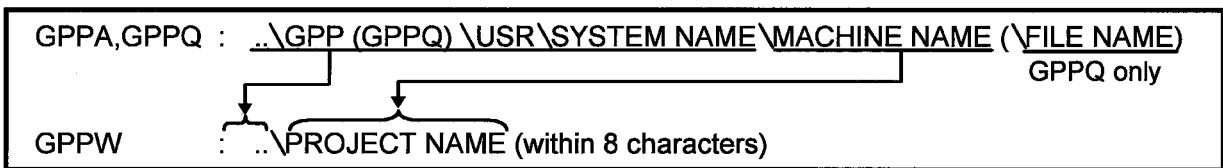
—1 project for 1 GPPW—

GPPW can edit only 1 project. To edit multiple projects, it is necessary to start multiple GPPWs.

☞ Part 5, 2.3. ☞

—Comparison with GPPA and GPPQ—

GPPW has no system names as were previously used in GPPA and GPPQ. The machine name has become the project name. A project can be created at any location.



—Device comment—

There are two comments in GPPW; a common comment and a comment for each program.

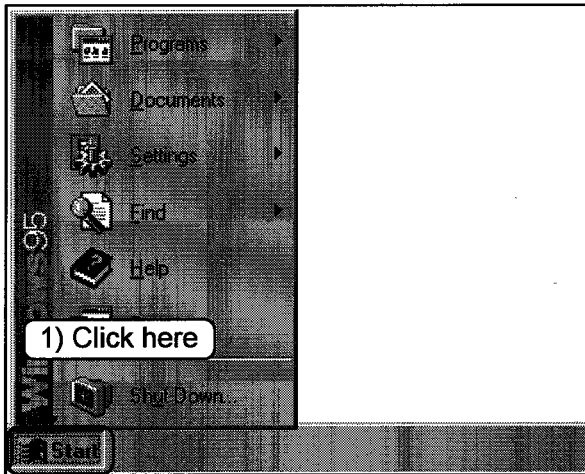
Comment type	Number of comments	Details
Common comment	1	Device comment which is common to the programs in the project.
Comment for each program	Same as the number of programs	Device comment set for each program. <u>The same name as the program name must be set.</u>

If two device comments are present, the priority is as follows.

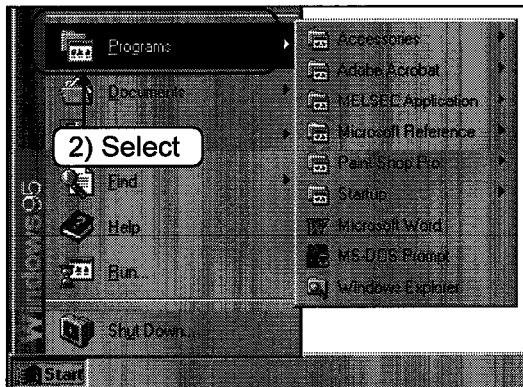
**Comment for each program > Common comment**

## 2.2 Starting GPPW

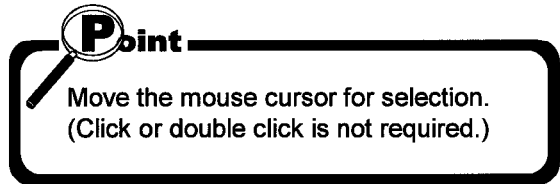
This section explains starting GPPW.



1) Click the **Start** button.



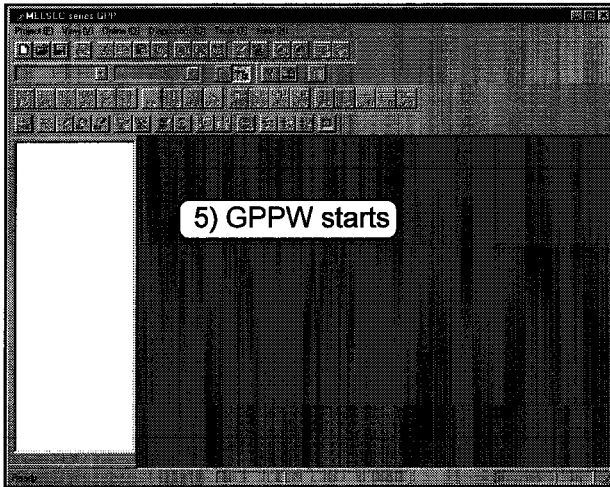
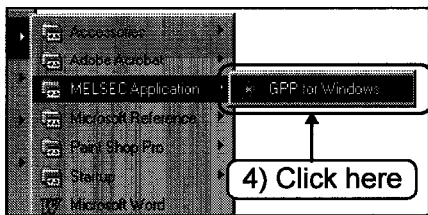
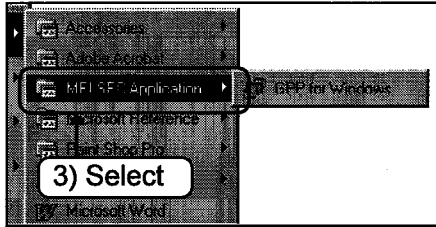
2) Select the [Programs] menu.



**To the following page //**



**From previous page**



3) Select the [MELSEC Application] menu.

**Point**

Move the mouse cursor for selection.  
(Click or double click is not required.)

4) Click the [GPP for Windows].

5) GPPW starts.

**Hint!**

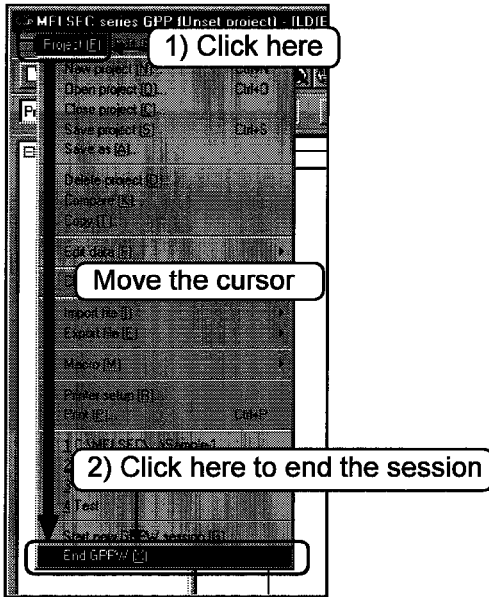
Refer to "Start-up" for creation and start-up of the short cut key icon.

## 2 Basics

### 2.3 Ending a GPPW session

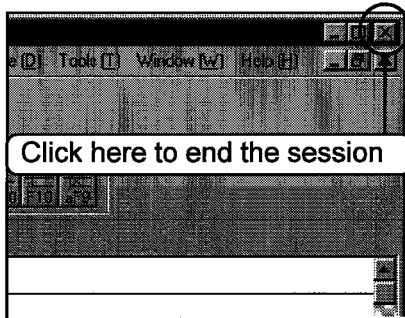
This section explains the three ways to end a GPPW session.

#### Method 1



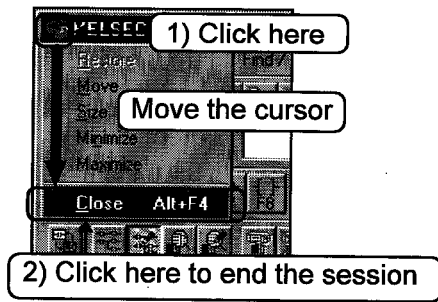
- 1) Click the [Project] menu.
- 2) Move the cursor and click the [End GPPW] menu to end GPPW.


#### Method 2

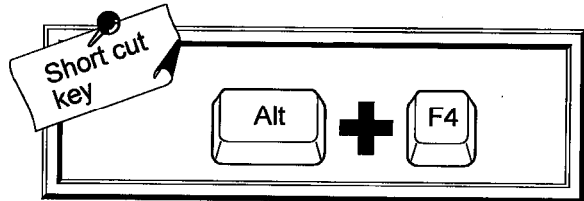


Click  at the upper right of the screen. GPPW ends.

—Method 3—

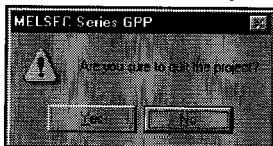


- 1) Click  at the upper left of the screen
- 2) Move the cursor and click the [Close] menu. GPPW ends.



—Dialog box appears for the following cases—

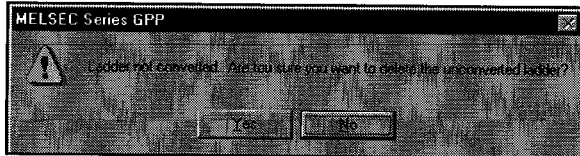
(Normal end)



Yes ..... The project ends.

No ..... GPPW does not end.

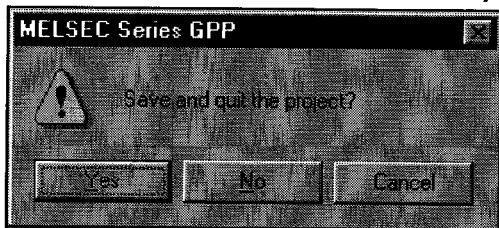
(When circuit is not converted)



Yes ..... GPPW ends without conversion.

No ..... GPPW does not end.  
(Circuit editing continues.)

(When the project is not saved)



Yes ..... The project is saved before ending GPPW.

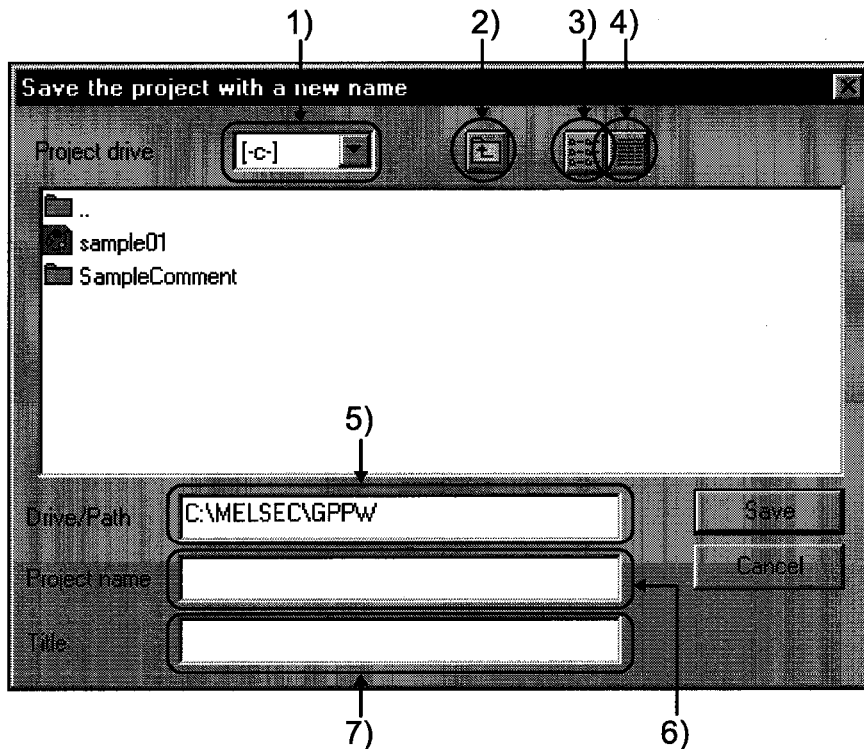
No ..... GPPW ends without saving the project.

Cancel .. GPPW does not end.

## 2 Basics

### 2.4 Designation of project

This section explains reading, saving, deleting and creating a project.



#### 1) Drive of project

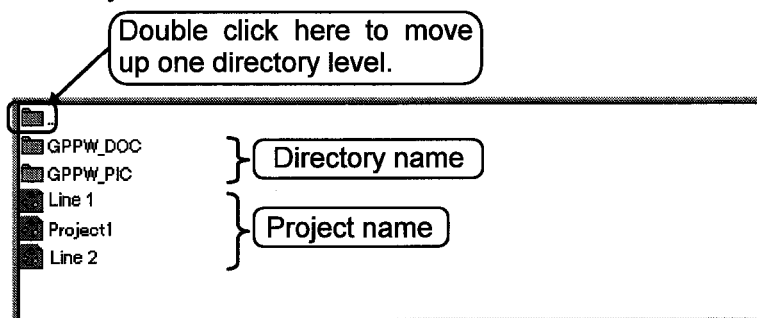
Designates the drive for saving the project.

#### 2) button

Click this button to move up one directory level.

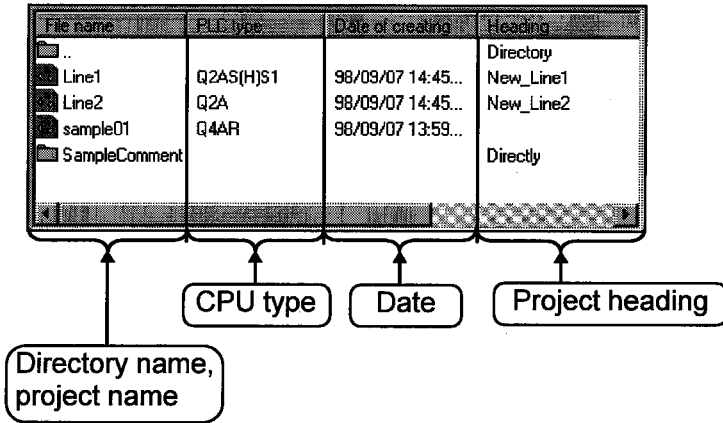
#### 3) button

Click this button to display the list of directory names and project names in the current directory.



4)  button

Click this button to display the details of directory names and project names in the current directory.



5) **Project path**

Designates the path for saving the project.

To designate the project path, input the path directly or double click the directory on the screen.

6) **Project name**

Designates the project name.

To designate the project name, input the project name directly or double click the project name on the screen. Double click the project name for the definition.

7) **Heading**

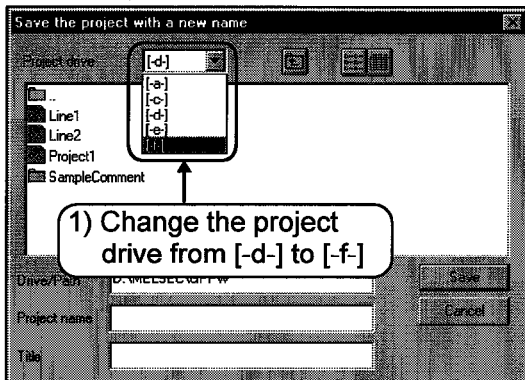
Designates heading for the project.

## 2 Basics

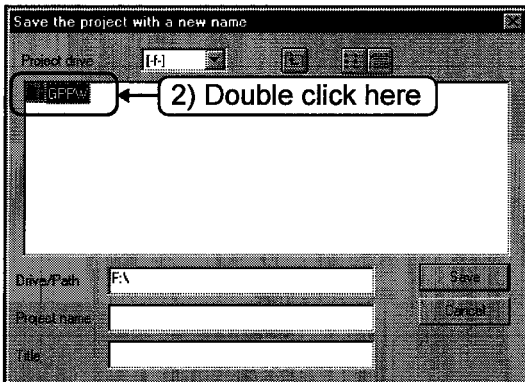
—Let's practice with a project for setting.—

### Setting example

Setting action	:Saving project
Project name to be saved	:Factory
Factory	:Program for M plant
Drive for saving project	:F:\GPPW\ GPPW installation drive
GPPW installation drive	:D:\MELSEC\GPPW



1) Change from [-d-] to [-f-].



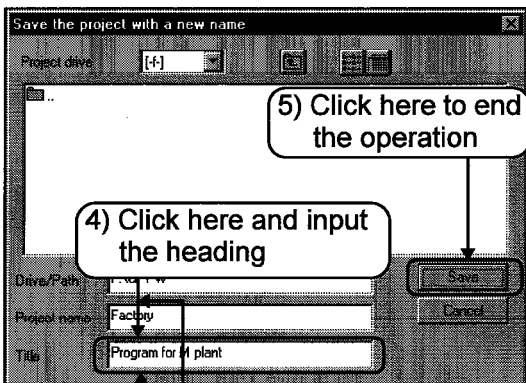
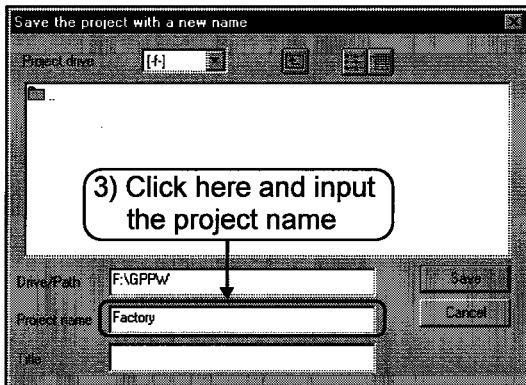
2) Double click the drive to change the project path to "F:\GPPW\".

 **Hint!**

A project can be created in any directory.

**To the following page //**

**From previous page**



(maximum 8 characters)

(maximum 32 characters)

3) Click and the character cursor (|) appears. Input "Factory" as a project name.

4) Click and the character cursor (|) appears. Input "Program for M plant" as a heading.

5) Click the **Save** button to end the operation.

 **Hint!**

Character types and the number of characters for project names are limited due to Windows specifications. Refer to Windows manuals for details.

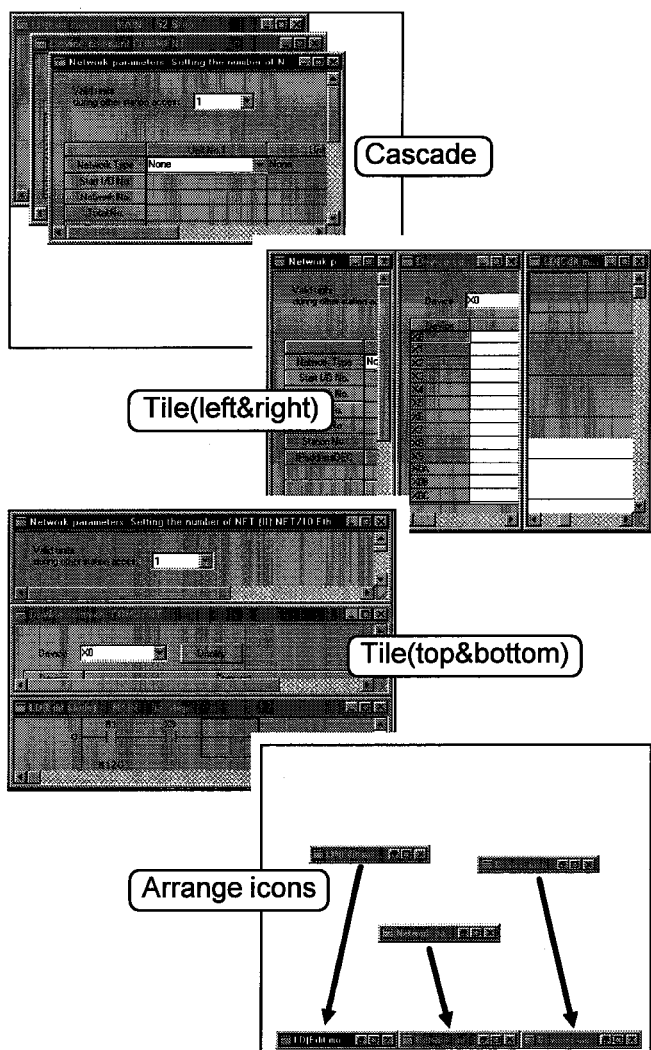
<Limitation on character types and number of characters>

- '/', '\', '>', '<', '\*', '?', '"', '|', ':', and ';' are not allowed.
- The total number of characters for the project path and the project name is limited to 255 characters).

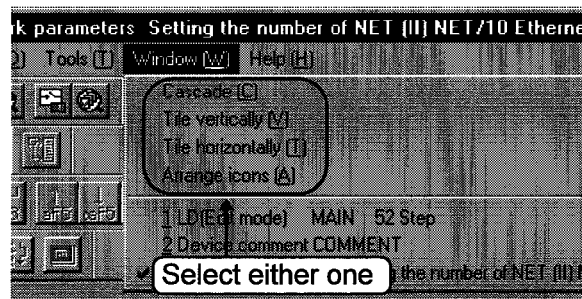




—Display of editing screens—



[Window] menu can change the display of editing screens.



**Hint!**

- Alignment of screens is effective only for windows which are open.
- "Arrange icons" is effective only for windows which are shown as icons.

**MEMO**

A large, empty rectangular area with rounded corners, intended for writing a memo. The area is defined by a thick black border and occupies most of the page below the 'MEMO' header.