



for a greener tomorrow



MITSUBISHI ELECTRIC

Changes for the Better

FACTORY AUTOMATION

Satellite Training Series **PART 3**



Your First GOT

Do you have difficulty training engineers at overseas factories?



- (1) Backups
- (2) Alarms
- (3) Batteries

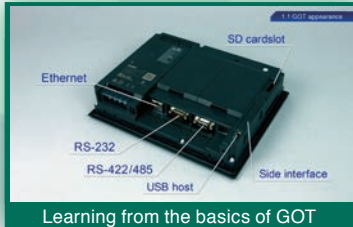
Clear explanations by instructors



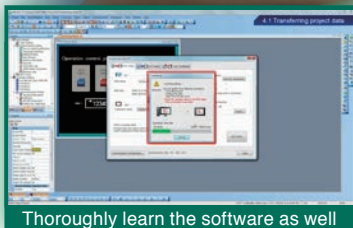
Multi-touch function

GOT2020 (GT27 model) only

Explanations using training machines



Learning from the basics of GOT



Thoroughly learn the software as well

[Supported languages]

- English / Japanese /
- Chinese / Indonesian /
- Thai / Vietnamese

"DVD & Textbook" for learning the basics of GOT

DVD Training



- Rewatch as many times as necessary
- Recommended for teaching large groups

Textbook PDF



- All steps from creating to transferring a project are explained in detail.



* The training machine is not enclosed with this product.

Training DVD Contents

Chapter 1 Using the GOT



- 1.1 GOT appearances
- 1.2 How the GOT functions

Chapter 2 Screen Design Software



- 2.1 System Setting of GT Designer3
- 2.2 Screen Layout of GT Designer3

Chapter 3 Creating Projects



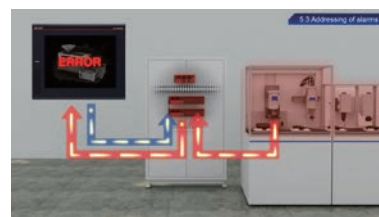
- 3.1 Creating switches
- 3.2 Creating lamps and saving projects

Chapter 4 Transferring Projects



- 4.1 Transferring project data
- 4.2 Connecting the GOT to the PLC

Chapter 5 GOT Maintenance



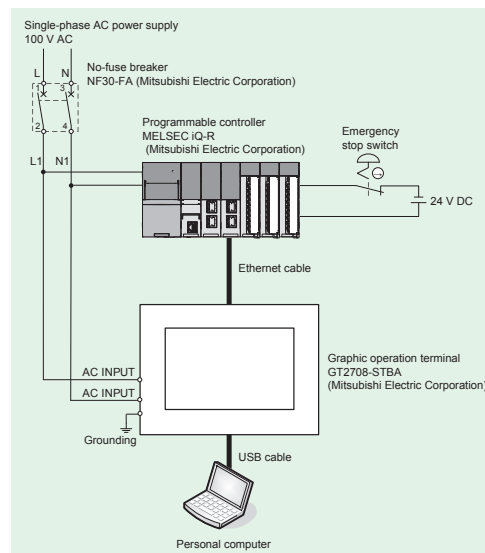
- 5.1 Necessity of maintenance
- 5.2 Backing up the GOT data
- 5.3 Addressing of alarms
- 5.4 Replacement of a battery

Textbook Contents

STEP	CONTENTS	
	FEATURES OF THE GOT	
STEP 1	CREATING A PROJECT	<ul style="list-style-type: none"> 1.1 Creating a New Project 1.2 Creating an Object 1.3 Creating a Figure 1.4 Setting the Screen Gesture Function 1.5 Checking the Created Screen 1.6 Saving the Project
STEP 2	TRANSFERRING THE PROJECT DATA	<ul style="list-style-type: none"> 2.1 Transferring the Project Data 2.2 Connecting the GOT and the PLC
STEP 3	USING THE GOT	<ul style="list-style-type: none"> 3.1 Checking the ON/OFF Action of Switches 3.2 Using the Screen Gesture Function 3.3 List of GOT Functions 3.4 Functions Convenient for Maintenance
STEP 4	MAINTAINING THE GOT	<ul style="list-style-type: none"> 4.1 Necessity of Maintenance 4.2 Backup 4.3 Alarm 4.4 Battery
APPENDIX 1	ERROR CODES AND SYSTEM ALARM LIST	
APPENDIX 2	INSTALLATION AND REMOVAL	
APPENDIX 3	TOUCH PANEL CALIBRATION	
APPENDIX 4	RELEVANT CATALOGS AND MANUALS	
APPENDIX 5	ASSEMBLY OF PRACTICAL TRAINING EQUIPMENT	

The assembly diagrams for the training machine are included in the textbook!

Students can learn practical usage by actually assembling the training machine, and can attain higher proficiency levels!



MITSUBISHI ELECTRIC CORPORATION

HEAD OFFICE: TOKYO BLDG., 2-7-3, MARUNOUCHI, CHIYODA-KU, TOKYO 100-8310, JAPAN

Registered trademarks

- Ethernet is a trademark of Xerox Corporation in the United States.
- SD and SDHC Logos are registered trademarks or trademarks of SD-3C, LLC.
- All other company names and product names used in this document are trademarks or registered trademarks of their respective companies.

⚠ Safety Warning

- To ensure proper use of the products in this document, please be sure to read the instruction manual and textbook prior to use.