

<HVIC>

M81764FP

Single Low-side Driver with Over-current Detection

DESCRIPTION

M81764FP is MOSFET and IGBT module 1input / 1output (Single) driver.

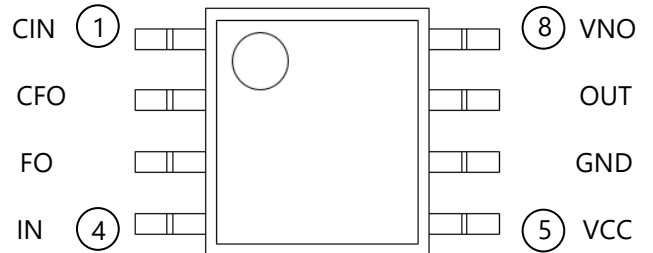
FEATURES

- Supply voltage.....24V(max)
- Output current.....-0.8A/+1.75A(typ.)
- Single low-side driver (IN→OUT)
- Over-current detection and output shutdown(CIN)
- Under-voltage lockout
- Failure Output(FO) terminal which can output Fault signals to communicate with controllers
- Capacitor with a Failure-Output pulse width timer function(CFO)
- SOP-8 PACKAGE

APPLICATIONS

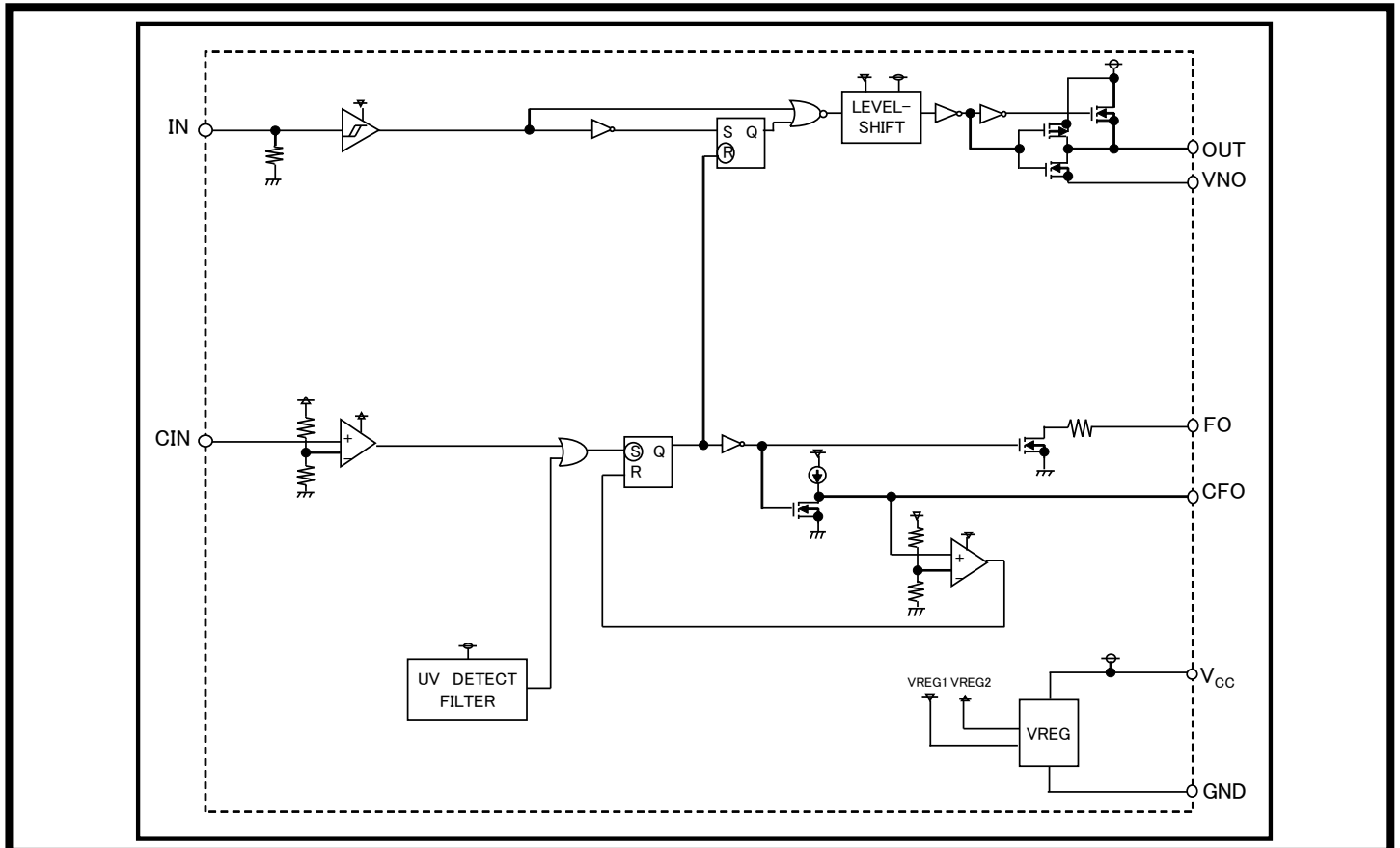
MOSFET and IGBT module 1input / 1output (Single) driver

PIN CONFIGURATION (TOP VIEW)



Outline:SOP8

BLOCK DIAGRAM



M81764FP

Single Low-side Driver with Over-current Detection

ABSOLUTE MAXIMUM RATINGS (Ta = 25°C unless otherwise specified)

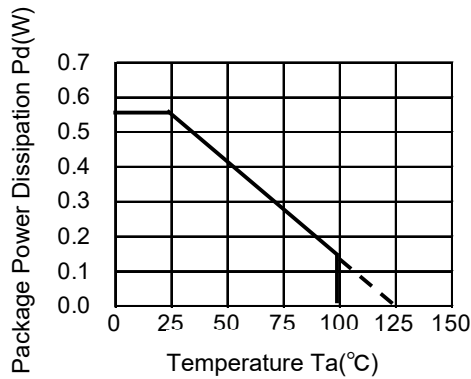
Symbol	Parameter	Test conditions	Ratings	Unit
V _{CC}	Fixed Supply Voltage		-0.5~24	V
V _{NO}	Driver Return Voltage	VNO terminal	-5.0~V _{CC} +0.5	V
V _{OUT}	Output Voltage	OUT terminal	V _{NO} -0.5~V _{CC}	V
I _{OUT}	Output Current	V _{CC} =15V, Gate resistor=0Ω, typ	-0.8/1.75	A
V _{IN}	Input Voltage	IN terminal	-0.5~V _{CC} +0.5	V
V _{CIN}	CIN Input Voltage	CIN terminal	-0.5~V _{CC} +0.5	V
V _{FO}	FO Output Voltage	FO terminal	-0.5~V _{CC} +0.5	V
I _{FO}	FO Output Current	FO terminal	1.0	mA
P _D	Package Power Dissipation	Ta=25°C, Our Standard Board	0.55	W
K _θ	Linear Derating Factor	Ta>25°C, Our Standard Board	-5.5	mW/°C
T _j	Junction Temperature		-40~125	°C
T _{opr}	Operation Temperature		-40~100	°C
T _{stg}	Storage Temperature		-40~150	°C
TL	Soldering Temperature(Reflow)	Pb-free applied	255:10s, max260	°C

RECOMMENDED OPERATING CONDITIONS

Symbol	Parameter	Test conditions	Limits			Unit
			Min.	Typ.	Max.	
V _{CC}	Fixed Supply Voltage		13.5	15.0	16.5	V
V _{NO}	Drive Return Voltage	VNO terminal	-5.0	0.0	5.0	V
V _{IN}	Input Voltage	IN terminal	0	-	V _{CC}	V
V _{CIN}	CIN Input Voltage	CIN terminal	0.0	-	5.5	V

Note: For proper operation, the device should be used within the recommended conditions

THERMAL DERATING FACTOR CHARACTERISTIC (MAXIMUM RATING)



<HVIC>

M81764FP

Single Low-side Driver with Over-current Detection

ELECTRICAL CHARACTERISTICS (Ta=25°C, VCC=15V, VNO=GND=0V unless otherwise specified)

Symbol	Parameter	Test conditions	Limits			Unit
			Min.	Typ.*	Max.	
I _{CC}	V _{CC} Standby Current	V _{IN} =0V	-	0.70	1.70	mA
V _{NO_1}	VNO Current1	V _{NO} =-5V	-7.0	-5.0	-3.0	mA
V _{NO_2}	VNO Current2	V _{NO} =V _{CC}	-	0.0	-	uA
V _{INH}	High Level Input Threshold Voltage	V _{OUT} =L→H	-	2.10	2.60	V
V _{inh}	Input Hysteresis Voltage	V _{inh} =V _{IH} -V _{IL} (Low Level Input Threshold Voltage)	0.35	0.80	-	V
I _{IN}	Input Pulldown Current	I _N =5V	0.24	0.33	0.50	mA
V _{CCuvr}	V _{CC} Supply UV Reset Voltage	FO=L→H	11.20	11.90	12.70	V
V _{CCuvh}	V _{CC} Supply UV Hysteresis Voltage	V _{CCuvh} =V _{CCuvr} -V _{CCuvl} (V _{CC} Supply UV Trip Voltage)	-	0.5	-	V
t _{VCCuv}	V _{CC} Supply UV Filter Time	V _{CC} =15V→10V	-	10	-	us
V _{CIN}	CIN Trip Voltage	FO=H→L	0.40	0.50	0.60	V
t _{CIN_1}	CIN Propagation Delay	From V _{CIN} =0V→1V to FO=H→L	-	410	500	ns
t _{CIN_2}	CIN Filter time	CIN pulse width : From V _{CIN} =0V→1V→0V to FO=H→L	80	180	240	ns
t _{wFOP}	FO Pulse Output Width	CFO=1000pF	75	110	180	us
V _{CFH}	CFO Threshold Voltage	FO=L→H	2.4	2.7	3.0	V
I _{CFO}	CFO Source Current	V _{CFO} =0V	-40	-25	-15	uA
V _{FOH}	FO High Level Output Voltage	V _{CIN} =0V, FO=10kΩ to V _{CC}	14.5	15.0	-	V
V _{FOL}	FO Low Level Output Voltage	V _{CIN} =1V, I _{FO} =1mA	-	-	0.95	V
I _{FO}	FO Leak Current	V _{CIN} =0V, V _{FO} =V _{CC}	-	-	1.0	uA
V _{OUTL}	Low Level Output Voltage	I _O =0mA	-	0.00	0.10	V
V _{OUTH}	High Level Output Voltage	I _O =0mA	14.5	15.0	-	V
tdLH	Turn-On Propagation Delay	From V _{IN} =L→H to V _{OUT} =L→H (OUT=1000pF)	-	100	300	ns
tdHL	Turn-Off Propagation Delay	From V _{IN} =H→L to V _{OUT} =H→L (OUT=1000pF)	-	100	300	ns
tr	Turn-On Rise-Time	OUT=1000pF	-	-	150	ns
tf	Turn-Off Fall-Time	OUT=1000pF	-	-	75	ns

* Typ is not specified

M81764FP

Single Low-side Driver with Over-current Detection

Function Table

IN	UV*1	CIN*2	OUT	FO	Note
L	H	L	L	H	OUT=L,FO=H
H	H	L	H	H	OUT=H,FO=H(HIGH ACTIVE)
X	L	X	L	L	OUT=L,FO=L (Under-Voltage Protection will shutdown input signals until FO return to high level.)
X	H	H	L	L	OUT=L,FO=L (Over-Current Protection will shutdown input signals until FO return to high level.)

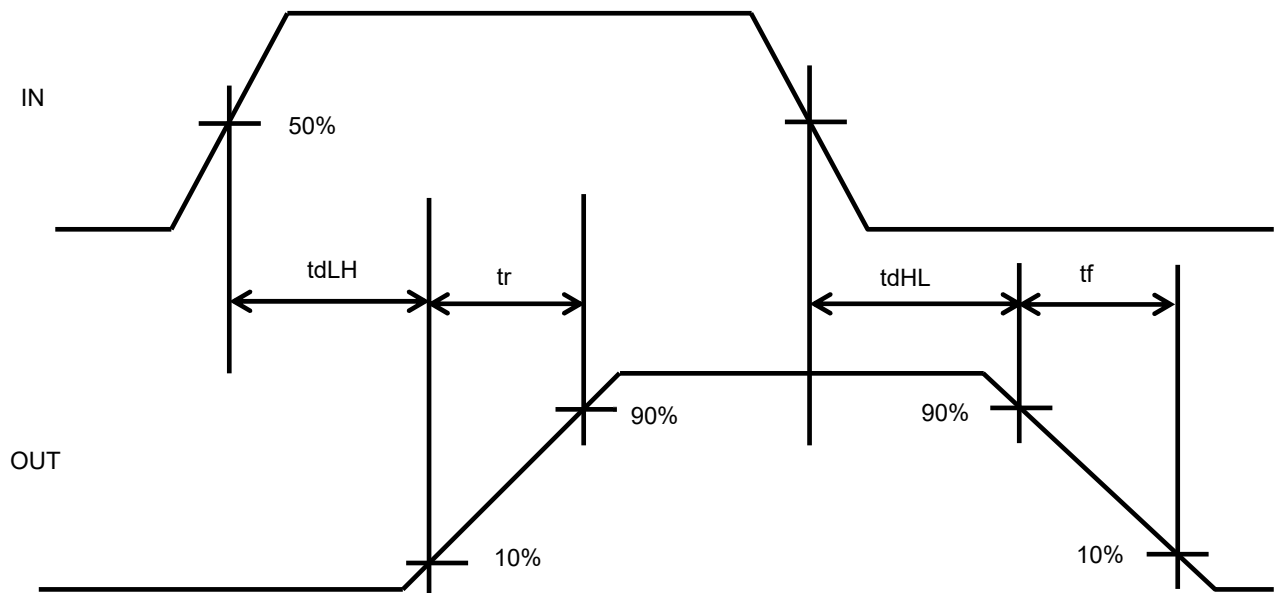
*1:UV "L" state is Under Voltage Protection.

*2:CIN "H" state is Over-Current Protection.

TIMING DIAGRAM

1. Input/Output Action

HIGH ACTIVE(When input signal(IN) is "H", then output signal(OUT) is "H")



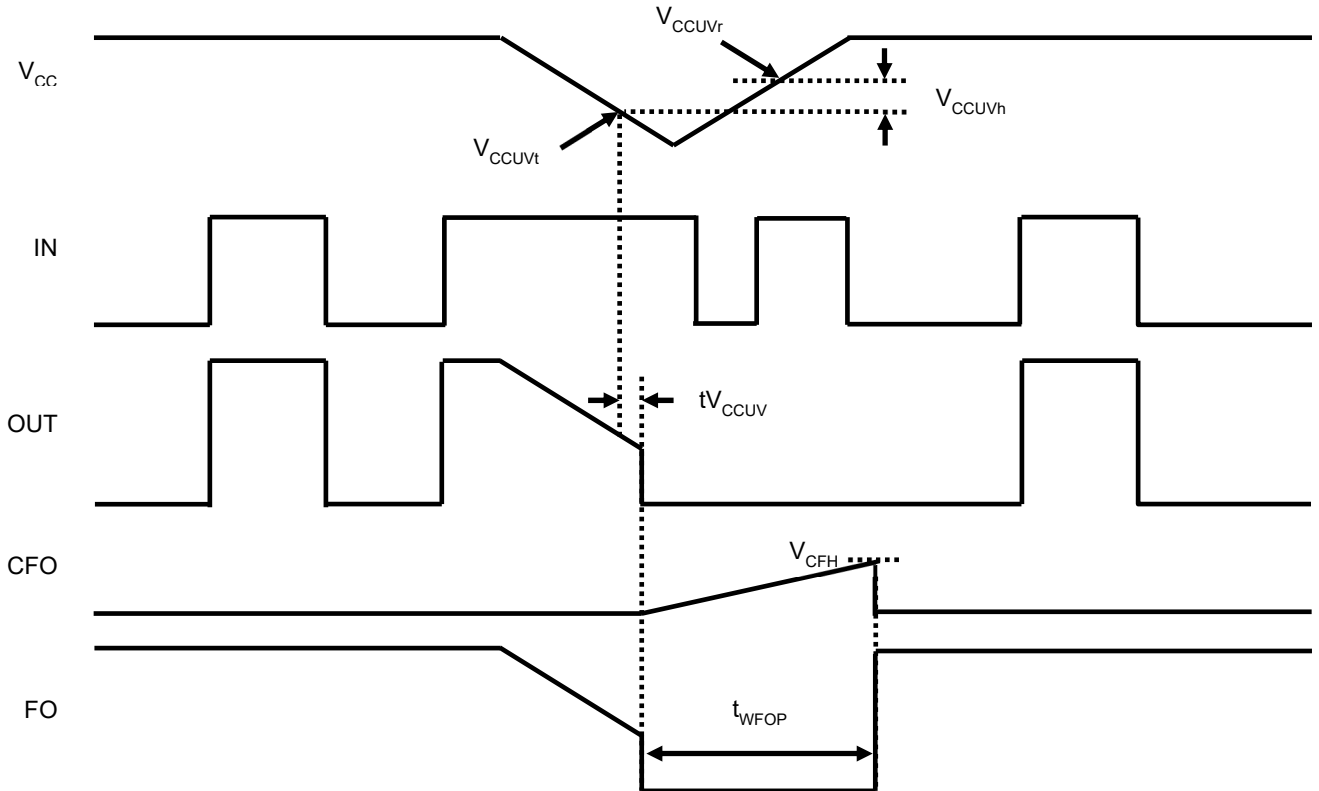
M81764FP

Single Low-side Driver with Over-current Detection

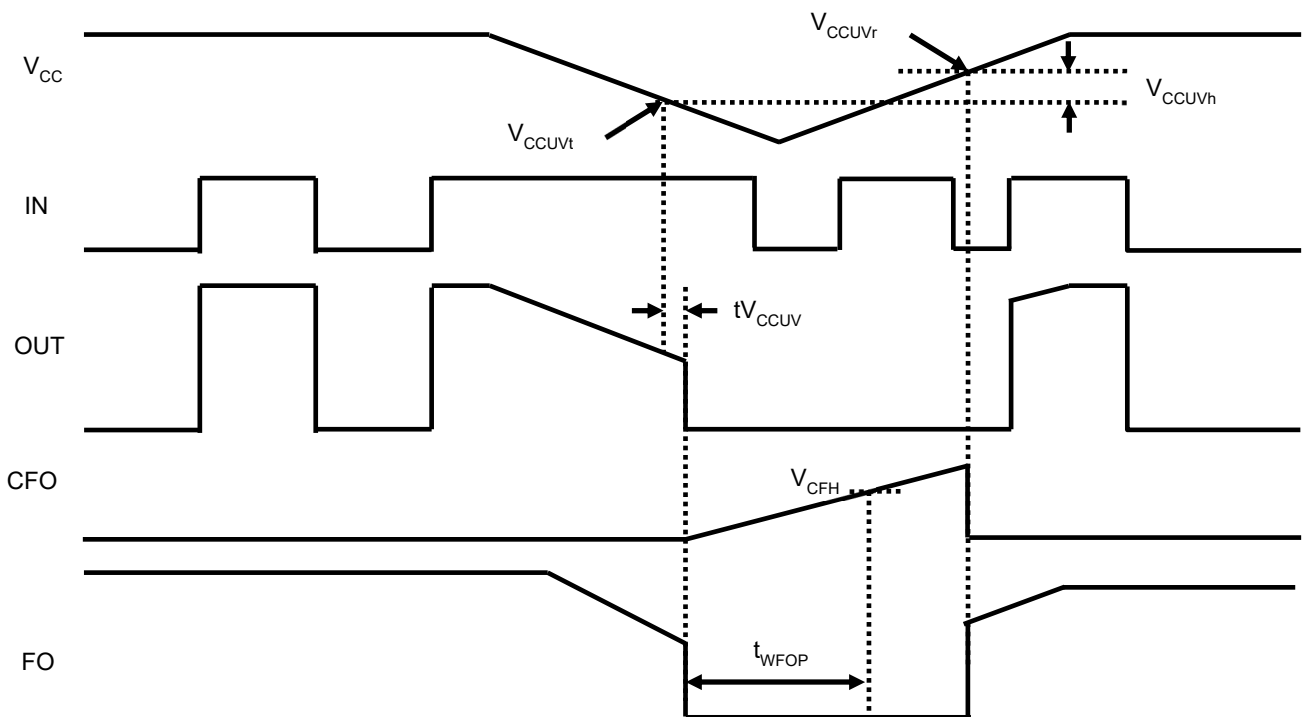
2.Under-Voltage Protection

When V_{CC} Supply Voltage keeps lower UV Trip Voltage for V_{CC} Supply UV Filter Time, FO signal becomes "L" and output signal becomes "L".

And then, when V_{CC} Supply Voltage is higher than UV Reset Voltage and longer than FO Pulse Output Width, FO signal becomes "H" and output signal keeps "L" until next input signal IN is "H".



※ Once FO enters Under Voltage Protection mode, FO keeps "L" until FO Pulse Output Width period is over and V_{CC} Supply Voltage higher than UV Reset Voltage.



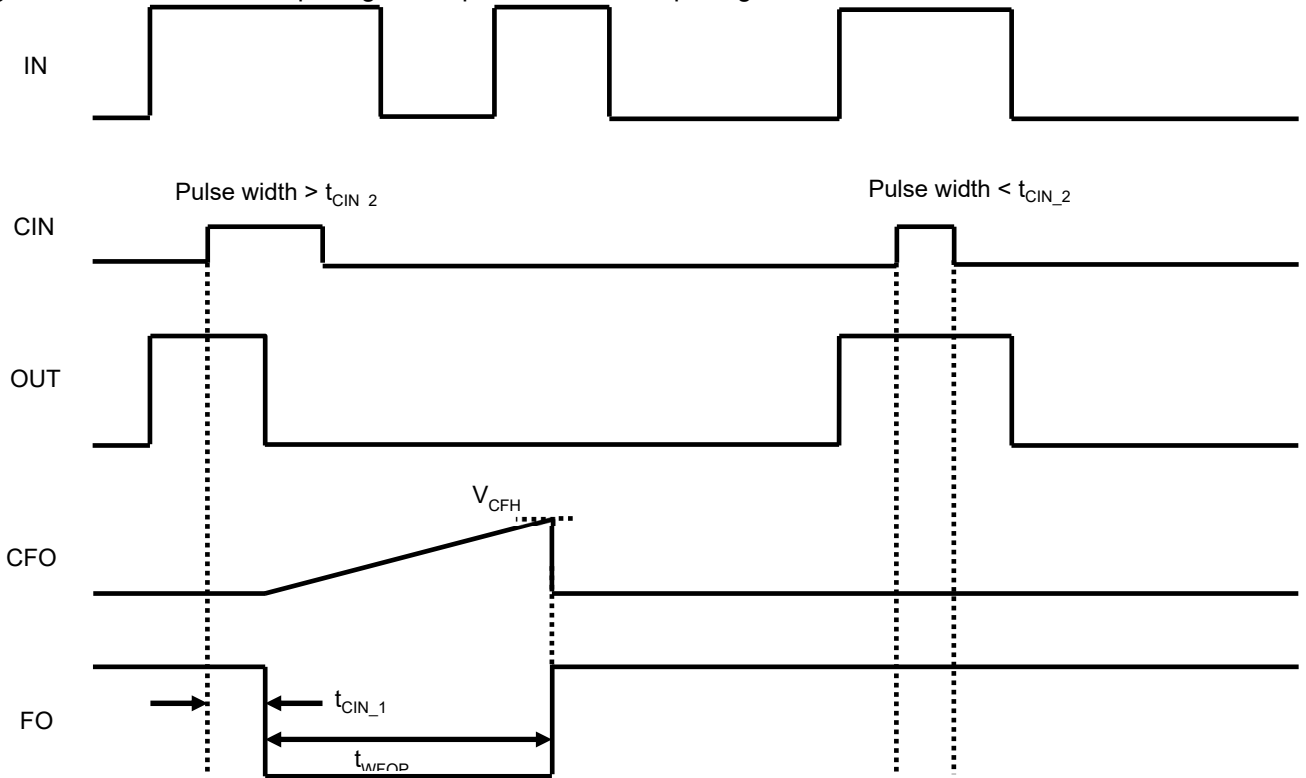
M81764FP

Single Low-side Driver with Over-current Detection

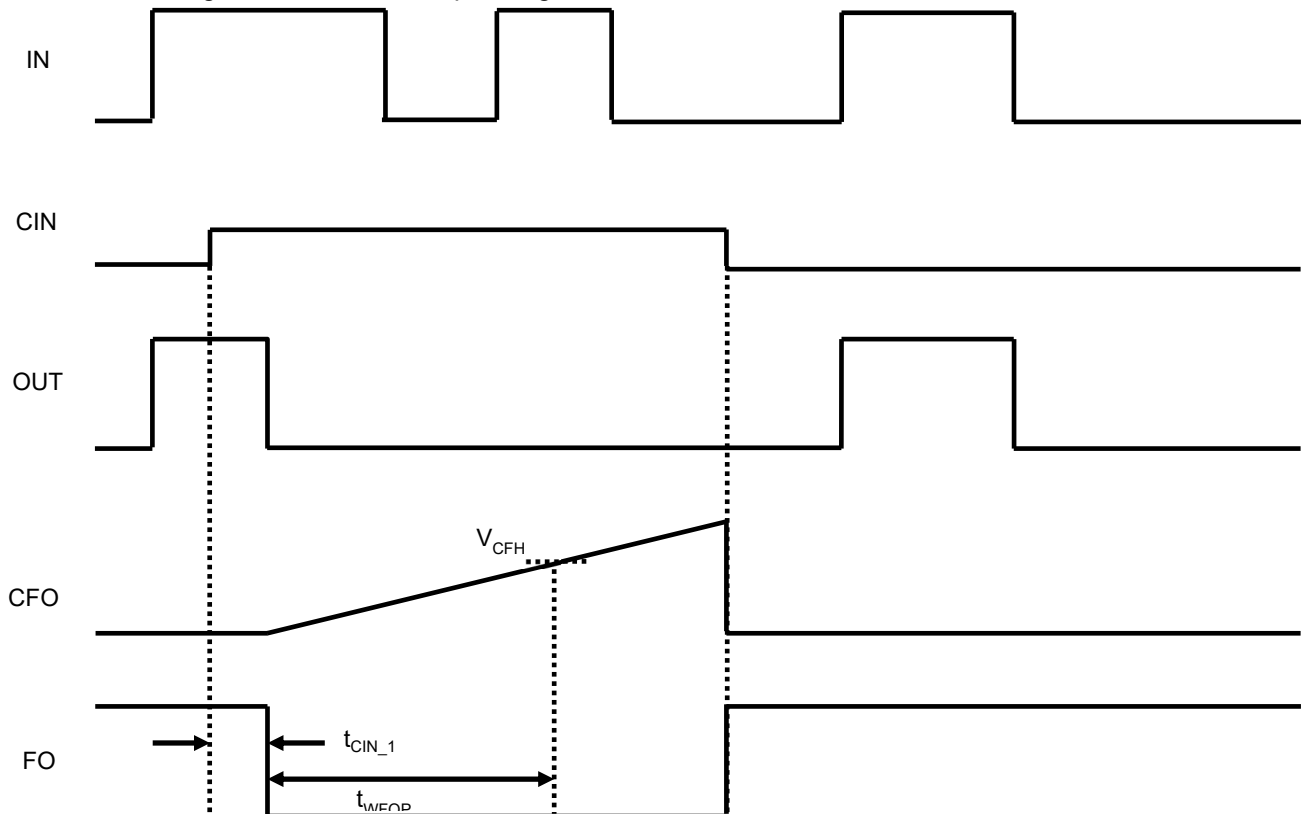
3. Over-Current Protection

When CIN terminal Voltage keeps higher CIN Trip Voltage for CIN Filter time, FO signal becomes "L" and output signal becomes "L".

And then, when CIN terminal Voltage is lower than CIN Trip Voltage and longer than FO Pulse Output Width, FO signal becomes "H" and output signal keeps "L" until next input signal IN is "H".



※ Once FO enters Over-Current Protection mode, FO keeps "L" until FO Pulse Output Width period is over and CIN terminal Voltage lower than CIN Trip Voltage.



<HVIC>

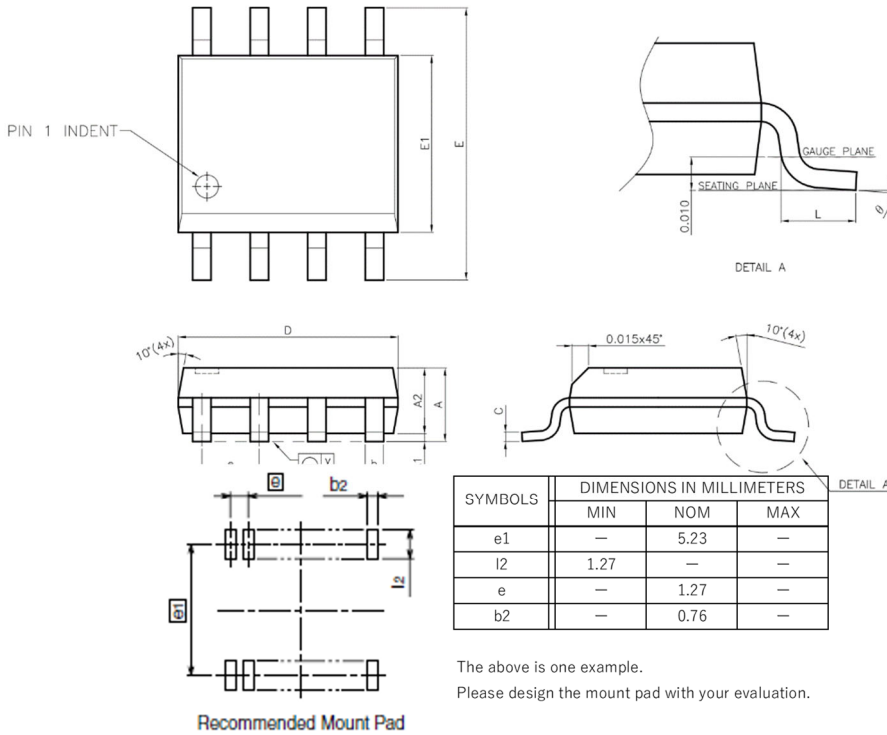
M81764FP

Single Low-side Driver with Over-current Detection

ENVIRONMENTAL CONSCIOUSNESS

M81764FP is compliant with the Restriction of the Use of Certain Hazardous Substances in Electrical and Electronic Equipment (RoHS) directive 2011/65/EU+(EU)2015/863.

PACKAGE OUTLINE



SYMBOLS	DIMENSIONS IN MILLIMETERS		
	MIN	NOM	MAX
A	1.47	1.60	1.73
A1	0.10	—	0.25
A2	—	1.45	—
b	0.33	0.41	0.51
C	0.19	0.20	0.25
D	4.80	4.85	4.95
E	5.80	6.00	6.20
E1	3.80	3.90	4.00
e	—	1.27	—
L	0.40	0.71	1.27
y	—	—	0.076
θ	0°	—	8°

SYMBOLS	DIMENSIONS IN MILLIMETERS		
	MIN	NOM	MAX
e1	—	5.23	—
l2	1.27	—	—
e	—	1.27	—
b2	—	0.76	—

The above is one example.
Please design the mount pad with your evaluation.

M81764FP

Single Low-side Driver with Over-current Detection

Main Revision for this Edition

Rev.	Date	Revision	
		Pages	Points
A	29 Jan. 2015	-	New Edition.
B	5 Feb. 2015	1	FEATURES revised description. "Single low side driver (IN→OUT) " "Over-current detection and output shutdown (CIN) "
C	8 Jan. 2016	-	"PRELIMINARY" was deleted. "Notice : This is not a final specification. Some parametric limits are subject to change." was deleted.
		1	FEATURES revised description.
		5	"Supply voltage.....24V(max) "TIMING CHART was changed.
D	19 Apr. 2016	2	"Operation Temperature " was changed to "-30°C~100°C"
E	25 Apr. 2016	2	"Junction Temperature " was changed to "-30°C~125°C"
F	28 Apr. 2021	7	Add PACKAGE OUTLINE1,2
		-	Update format.
G	10 Jan. 2023	7	Delete PACKAGE OUTLINE (Not recommended for new designs)
H	01 Feb. 2024	2	Deleted "On Board" in Storage Temp. "Junction Temperature " was changed to "-40°C~125°C" "Operation Temperature " was changed to "-40°C~100°C"
		3	The test conditions for VCC UV Reset was "VCC _{uv} : VCC Supply UV Trip Voltage".

Important Notice

The information contained in this datasheet shall in no event be regarded as a guarantee of conditions or characteristics. This product has to be used within its specified maximum ratings, and is subject to customer's compliance with any applicable legal requirement, norms and standards.

Except as otherwise explicitly approved by Mitsubishi Electric Corporation in a written document signed by authorized representatives of Mitsubishi Electric Corporation, our products may not be used in any applications where a failure of the product or any consequences of the use thereof can reasonably be expected to result in personal injury.

In usage of power semiconductor, there is always the possibility that trouble may occur with them by the reliability lifetime such as Thermal Cycle or others, or when having assembling stress (e.g. high temperature of reflow process, or rinse after the reflow), or when used under special operating conditions (e.g. rise/fall time of the power supply voltage, or excessive voltage/current injection), or when used under special circumstances (e.g. condensation, high humidity, dusty, salty, highlands, environment with lots of organic matter / corrosive gas / explosive gas, or situations which terminals of semiconductor products receive strong mechanical stress). Therefore, please pay sufficient attention to such circumstances. Further, depending on the technical requirements, our semiconductor products may contain environmental regulation substances, etc. If there is necessity of detailed confirmation, please contact our nearest sales branch or distributor.

The contents or data contained in this datasheet are exclusively intended for technically trained staff. Customer's technical departments should take responsibility to evaluate the suitability of Mitsubishi Electric Corporation product for the intended application and the completeness of the product data with respect to such application. In the customer's research and development, please evaluate it not only with a single semiconductor product but also in the entire system, and judge whether it's applicable. As required, pay close attention to the safety design by installing appropriate fuse or circuit breaker between a high voltage/large current power supply and power semiconductor products(e.g. IGBT, MOSFET) to prevent secondary damage. Please also pay attention to the application note and the related technical information.

Keep safety first in your circuit designs!

Mitsubishi Electric Corporation puts the maximum effort into making semiconductor products better and more reliable, but there is always the possibility that trouble may occur with them. Trouble with semiconductors may lead to personal injury, fire or property damage. Remember to give due consideration to safety when making your circuit designs, with appropriate measures such as (i) placement of substitutive, auxiliary circuits, (ii) use of non-flammable material or (iii) prevention against any malfunction or mishap.

Notes regarding these materials

- These materials are intended as a reference to assist our customers in the selection of the Mitsubishi semiconductor product best suited to the customer's application; they do not convey any license under any intellectual property rights, or any other rights, belonging to Mitsubishi Electric Corporation or a third party.
- Mitsubishi Electric Corporation assumes no responsibility for any damage, or infringement of any third-party's rights, originating in the use of any product data, diagrams, charts, programs, algorithms, or circuit application examples contained in these materials.
- All information contained in these materials, including product data, diagrams, charts, programs and algorithms represents information on products at the time of publication of these materials, and are subject to change by Mitsubishi Electric Corporation without notice due to product improvements or other reasons. It is therefore recommended that customers contact Mitsubishi Electric Corporation or an authorized Mitsubishi Semiconductor product distributor for the latest product information before purchasing a product listed herein.
The information described here may contain technical inaccuracies or typographical errors. Mitsubishi Electric Corporation assumes no responsibility for any damage, liability, or other loss rising from these inaccuracies or errors.
Please also pay attention to information published by Mitsubishi Electric Corporation by various means, including the Mitsubishi Semiconductor home page (<http://www.MitsubishiElectric.com/>).
- When using any or all of the information contained in these materials, including product data, diagrams, charts, programs, and algorithms, please be sure to evaluate all information as a total system before making a final decision on the applicability of the information and products. Mitsubishi Electric Corporation assumes no responsibility for any damage, liability or other loss resulting from the information contained herein.
- Mitsubishi Electric Corporation semiconductors are not designed or manufactured for use in a device or system that is used under circumstances in which human life is potentially at stake. Please contact Mitsubishi Electric Corporation or an authorized Mitsubishi Semiconductor product distributor when considering the use of a product contained herein for any specific purposes, such as apparatus or systems for transportation, vehicular, medical, aerospace, nuclear, or undersea repeater use.
- The prior written approval of Mitsubishi Electric Corporation is necessary to reprint or reproduce in whole or in part these materials.
- If these products or technologies are subject to the Japanese export control restrictions, they must be exported under a license from the Japanese government and cannot be imported into a country other than the approved destination.
Any diversion or re-export contrary to the export control laws and regulations of Japan and/or the country of destination is prohibited.
- Please contact Mitsubishi Electric Corporation or an authorized Mitsubishi Semiconductor product distributor for further details on these materials or the products contained therein.