

TECHNICAL BULLETIN

[Issue No.] T06-0004

[Page] 1/3

[Title] Changes in specifications of duplex remote master function for MELSECNET/10 remote I/O network.

[Date of Issue] Oct. 1, '98

[Relevant Models] AJ71QLP21, AJ71QLP21S, AJ71QBR11, A1SJ71QLP21, A1SJ71QLP21S, A1SJ71QBR11, AJ71QLP21G

Thank you for your continued patronage of the Mitsubishi general-purpose programmable controller MELSEC-QnA Series.

The operation status during recovery of the master module error has been changed for the MELSEC-QnA Series MELSECNET/10 remote I/O net duplex remote master function. The details are as follow.

Whereas

[Details]

1. Details of changes

The operation process to recover the error of a down remote master station has been changed for when the duplex remote master station and duplex remote sub-master station are structured with a system other than the Q4ARCPU duplexing system in the MELSECNET/10 remote I/O net.

With the conventional MELSECNET/10 remote I/O net's duplex remote master function, the following types of operations were taken after the remote master station went down.

- (1) The remote sub-master station continued to run the network.
- (2) Even if the remote master station was normally recovered, it did not participate in the network.
- (3) When the remote sub-master station went down, the network went down because there was no remote master station.

With the changed duplex remote master function, the following operations take place after the remote master station goes down.

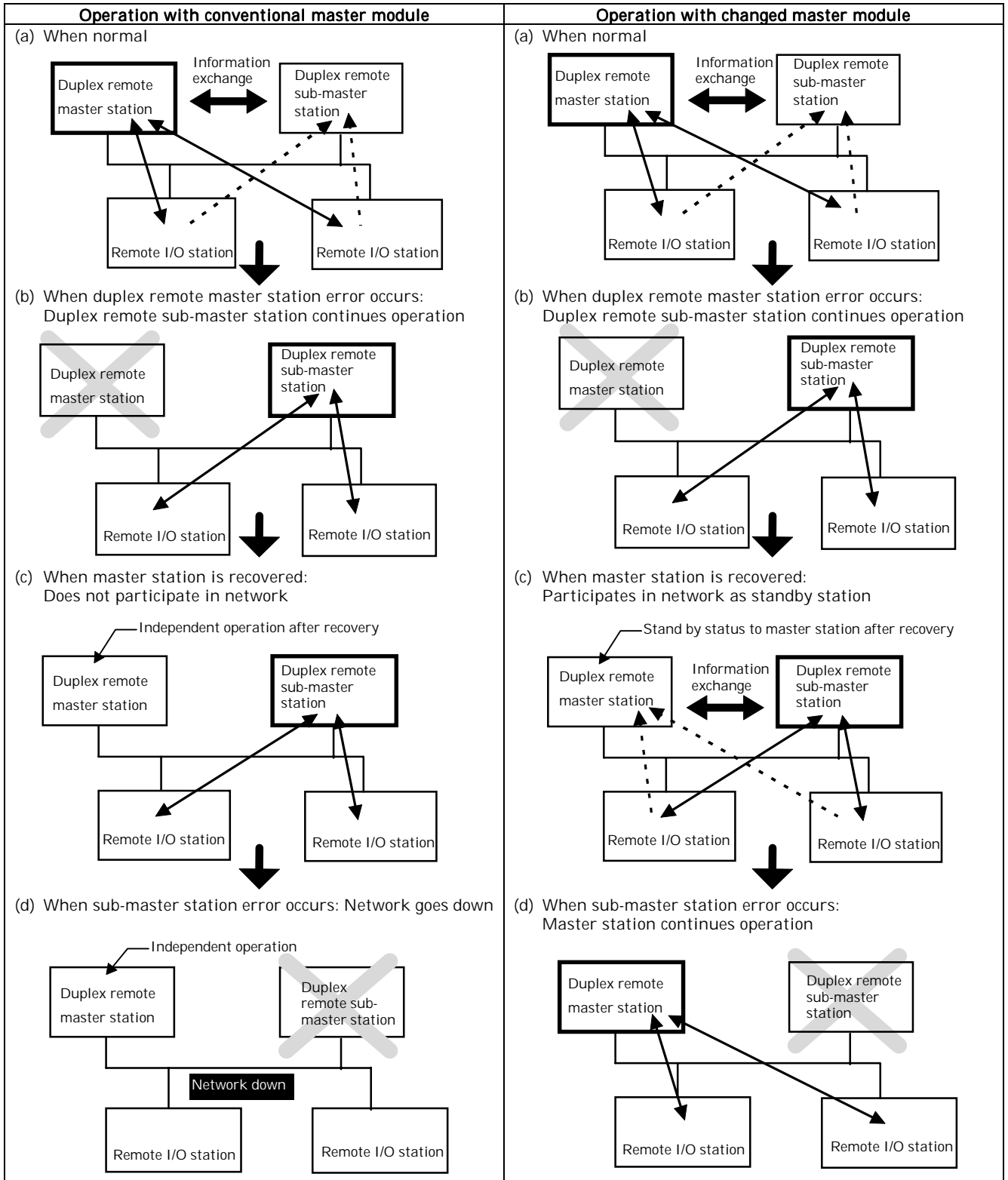
- (1) The remote sub-master station continues to run the network.
- (2) When the remote master station is normally recovered, it participates in the network in the standby status to the master station.
- (3) If the remote sub-master station goes down, the remote master station in the standby status to the master station continues to run the network.

The operation status is shown with figures on the next page.



MITSUBISHI ELECTRIC CORPORATION

HEAD OFFICE MITSUBISHI DENKI BLDG. MARUNOUCHI, TOKYO 100-0005. TELEX J24532 CABLE MELCO TOKYO



TECHNICAL BULLETIN

[Issue No.] T06-0004

[Page] 3/3

[Title] Changes in specifications of duplex remote master function for MELSECNET/10 remote I/O network.

[Date of Issue] Oct. 1, '98

[Relevant Models] AJ71QLP21, AJ71QLP21S, AJ71QBR11, A1SJ71QLP21, A1SJ71QLP21S, A1SJ71QBR11, AJ71QLP21G

2. Applicable models

The applicable models and software versions are shown below.

Module	Type	Software version
MELSECNET/10 master module	AJ71QLP21, AJ71QLP21S, AJ71QBR11, A1SJ71QLP21, A1SJ71QLP21S, A1SJ71QBR11	P and above
	AJ71QLP21G	G and above

The module's software version can be confirmed with the label attached to the front of the module.

