

Subject: Report of RT ToolBox3 Ver.1.32J release**Applicable to:** FR series, F series, SQ series, SD series, S series
(CR800/CR750/CR700/CR500 series robot controller)

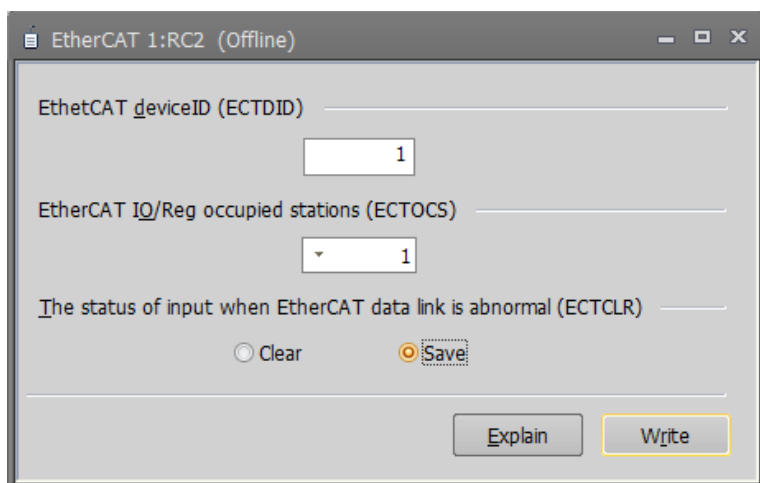
Thank you for your continued support of Mitsubishi industrial robot “MELFA”.

This Technical news describes the new version 1.32J of the RT ToolBox3.
3F-14C-WINJ(E)／3F-15C-WINJ(E)／3F-16D-WINJ(E)

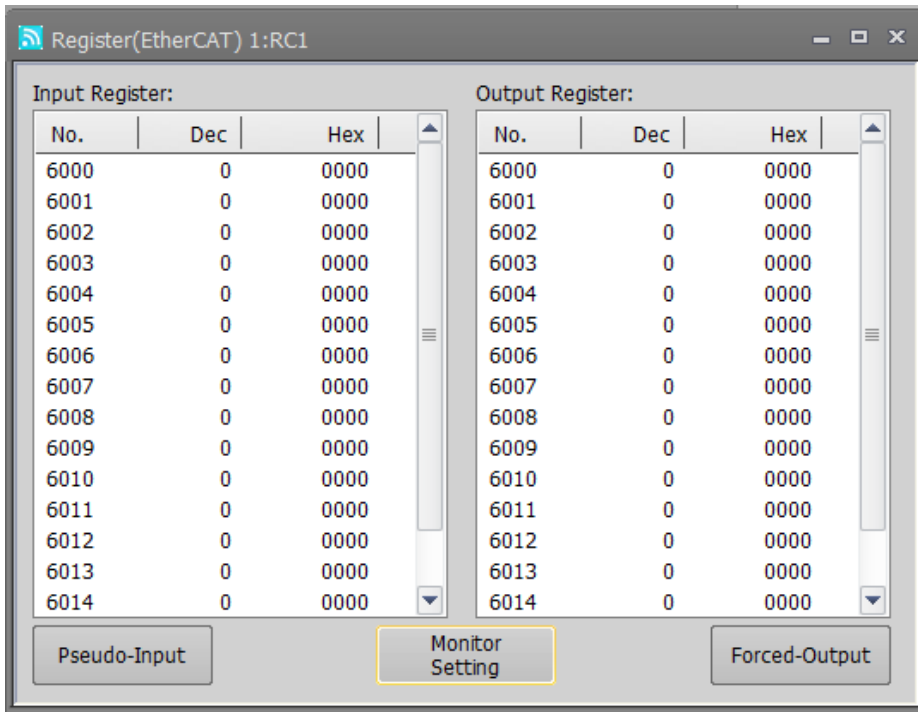
In order to use the functions described in this technical news, you need to download the latest version from MITSUBISHI ELECTRIC FA site, and upgrading the RT ToolBox3.

1. EtherCAT

- EtherCAT parameter dedicated screen added.



- The function to monitor EtherCAT on the register monitor screen has been added.



(End)