

Subject: Report of R56TB/R57TB Version 4.1 release

Applicable to: FR series, F series, SQ series, SD series
(CR800/ CR750/ CR700 series robot controller)

Thank you for your continued support of Mitsubishi industrial robot “MELFA”.
This Technical news describes the new version 4.1 of **R56TB/R57TB**.

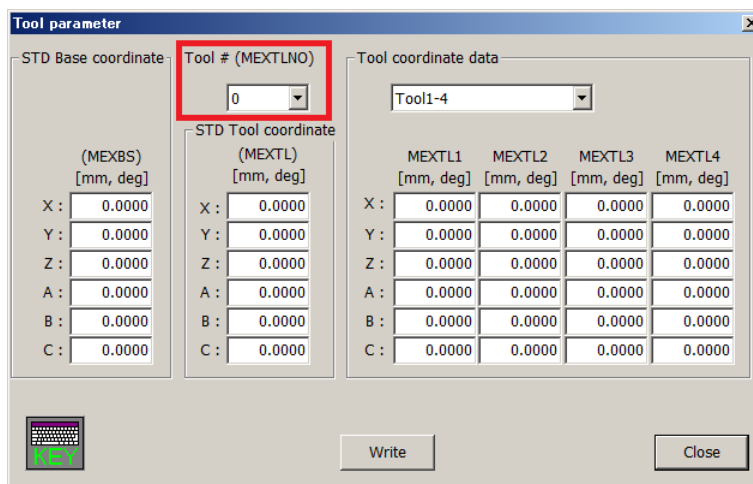
R56TB: CR800/CR750/CR700

R57TB: CR751

<Additional function>

● Tool parameter

Added the function to set the tool number on the tool parameter screen.

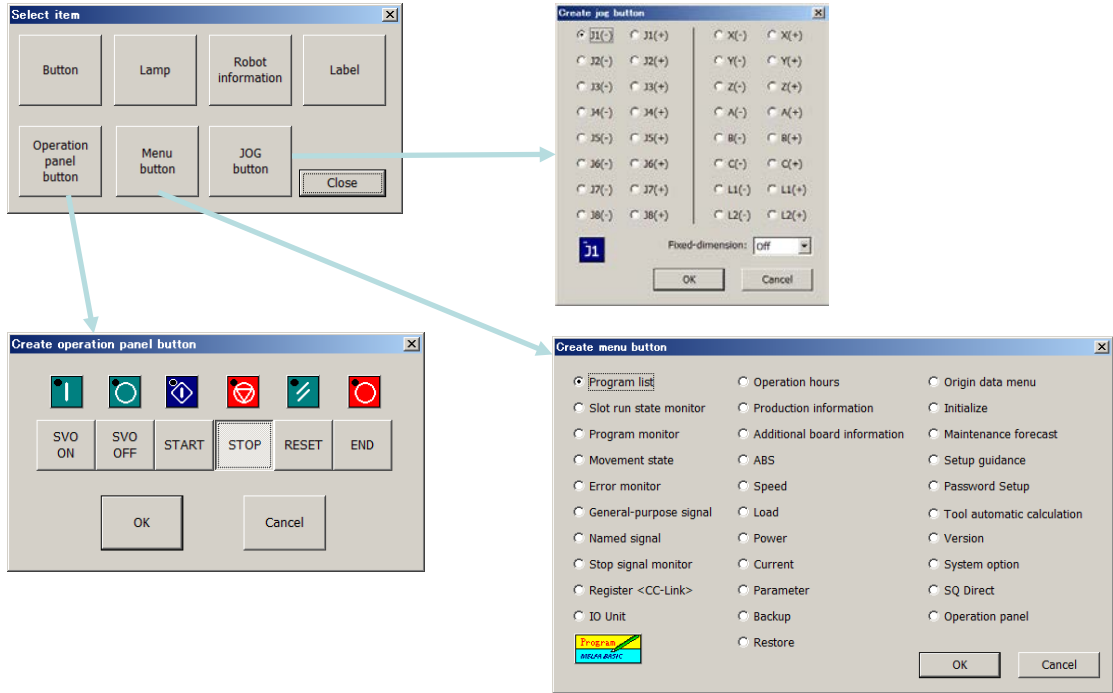


The screenshot shows the 'Tool parameter' dialog box with the following fields and values:

STD Base coordinate		Tool # (MEXTLNO)	Tool coordinate data			
(MEXBS) [mm, deg]		0	Tool1-4			
X:	0.0000		MEXTL1	MEXTL2	MEXTL3	MEXTL4
Y:	0.0000		[mm, deg]	[mm, deg]	[mm, deg]	[mm, deg]
Z:	0.0000		X:	0.0000	0.0000	0.0000
A:	0.0000		Y:	0.0000	0.0000	0.0000
B:	0.0000		Z:	0.0000	0.0000	0.0000
C:	0.0000		A:	0.0000	0.0000	0.0000
			B:	0.0000	0.0000	0.0000
			C:	0.0000	0.0000	0.0000

● User definition screen

Added operation panel / menu / jog button to user definition screen.



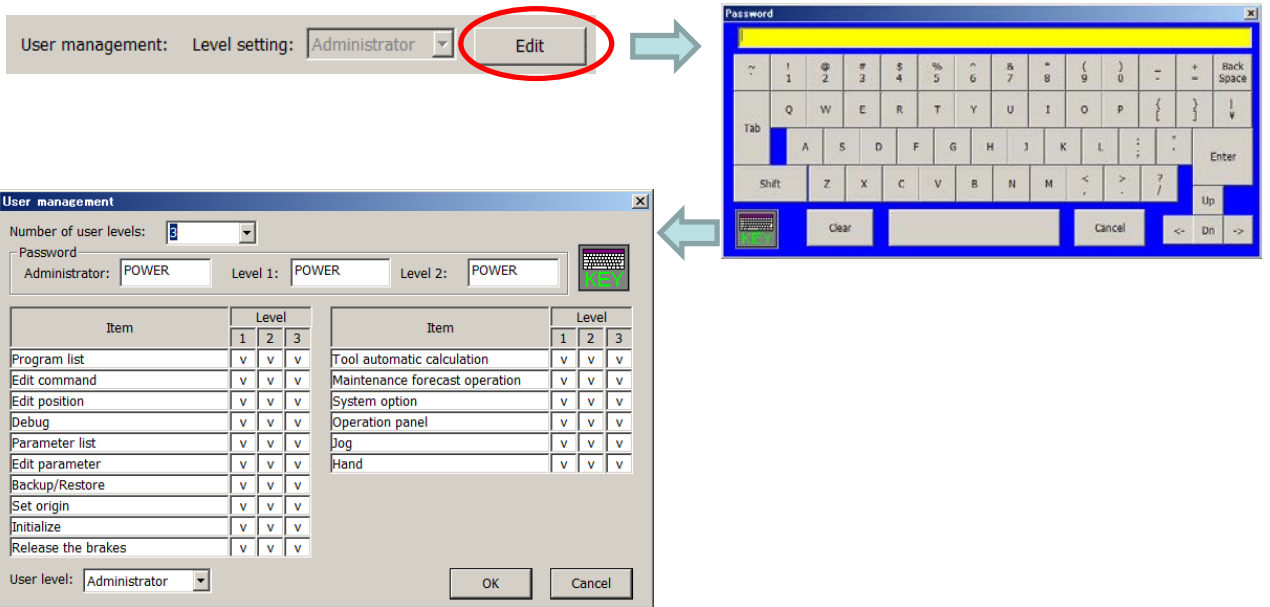
● User management

- Added user management function to the system option screen.

It is used to restrict the use of R56TB / R57TB screen.

In addition to the administrator, you can set up to 3 levels of users.

Usage authority is set in the order of administrator> level 1> level 2> level 3.



<Bug correction >

● Tool parameter

Fixed a bug that can not switch to Japanese when launched in English.