

MITSUBISHI ELECTRIC CORPORATION
PUBLIC RELATIONS DIVISION
7-3, Marunouchi 2-chome, Chiyoda-ku, Tokyo, 100-8310 Japan

FOR IMMEDIATE RELEASE

No. 3127

Customer Inquiries

Media Inquiries

LCD Marketing Dept.
Mitsubishi Electric Corporation

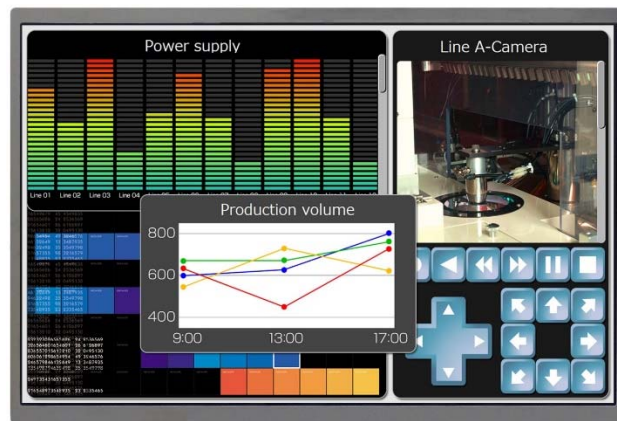
Public Relations Division
Mitsubishi Electric Corporation
prd.gnews@nk.MitsubishiElectric.co.jp
www.MitsubishiElectric.com/news

www.MitsubishiElectric.com/semiconductors

Mitsubishi Electric to Launch 10.1-inch WXGA Color TFT-LCD Module

Suitable for measuring instruments and handheld devices

TOKYO, September 6, 2017 – [Mitsubishi Electric Corporation](http://www.MitsubishiElectric.com) (TOKYO: 6503) announced today the coming launch of a new 10.1-inch WXGA TFT-LCD module for industrial applications including measuring instruments and handheld devices. The module will offer an unprecedented combination of high-resolution WXGA (1,280×800 dots), super-wide 170-degree horizontal/vertical viewing angles, 1,000 cd/m² high brightness, operating temperature range of -40 to 80 degrees Celsius, and thin, lightweight design. Sample sales will begin October 1 through Mitsubishi Electric offices worldwide.



Mitsubishi Electric Color TFT-LCD Module
AA101TA12

The new TFT-LCD module will satisfy increasing market demands for high resolution, wide viewing angles, high brightness and resistance to extreme environments for versatile applications and installations. Mitsubishi Electric now offers 31 TFT-LCD modules with super-wide viewing angles.

Product Features

1) *High resolution, super-wide viewing angle, high brightness and wide temperature range for versatile measuring instruments applications and installations*

- High resolution 1,280 (H) × 800 (V) WXGA screen capably handles dense information
- 170-degree super-wide horizontal/vertical viewing angle ensures excellent visibility for a wide variety of measuring instruments
- Market-leading range of operating temperatures from -40 to 80 degrees Celsius suitable for industrial devices used in extreme outdoor environments
- High brightness of 1,000 cd/m² and high contrast ratio of 1000:1 for easy visibility in bright environments

2) *Thin, lightweight design suitable for handheld devices*

- With a thickness of 8.5mm and weight of 310g, it is 12% thinner and 23% lighter than the existing AA121TH11 model, which is 9.7mm and 404g (assuming its 12.1-inch WXGA screen were converted to 10.1 inches)

Sales Schedule

| Product | Model | Sample Shipment |
|-------------------------------|-----------|-----------------|
| 10.1-inch WXGA TFT-LCD Module | AA101TA12 | October 1, 2017 |

Specifications

| | AA101TA12 |
|--------------------------------|---|
| Display size (resolution) | 25.6cm (10.1-inch) WXGA |
| Display area (mm) | 216.96 (H)×135.6 (V) |
| Dots | 1280 (H)×800 (V) |
| Pixel pitch (mm) | 0.1695 (H)×0.1695 (V) |
| Contrast ratio | 1000:1 |
| Luminance (cd/m ²) | 1,000 |
| View angles (°)(U/D), (L/R) | 85/85, 85/85 |
| Colors | 262k (6bit/color) / 16.77M (8bit/color) |
| Color gamut (NTSC; %) | 50 |
| Backlight unit | LED |
| Backlight life time (Typ.)(hr) | 100,000 |
| Electrical interface | LVDS 6/8bit |
| Dimensions (mm) | 231.0×153.5×8.5 |
| Weight (g) | 310 |
| Operating temperatures (°C) | -40 to +80 |
| Storage temperatures (°C) | -40 to +80 |

Super-Wide Viewing Angle Lineup

| Display | Resolution | Model | Display | Resolution | Model |
|----------|------------|----------------|------------------|-------------|------------------|
| 3.5-inch | QHD | AA035AE01 | 10.1-inch | WXGA | AA101TA12 |
| 5.0-inch | WVGA | AA050MG03/MH01 | 10.4-inch | SVGA | AA104SJ02 |
| 7.0-inch | WVGA | AA070MC01/11 | | 10.6-inch | XGA |
| | | AT070MP01/11 | WXGA | | AA106TA01/11 |
| 7.8-inch | 800 × 300 | AA078AA01 | 12.1-inch | SVGA | AA121ST01 |
| 8.0-inch | WVGA | AT080MD01/11 | | XGA | AA121XP01/13 |
| 8.4-inch | SVGA | AA084SC01 | | WXGA | AA121TH01/11 |
| | XGA | AA084XD01/11 | 15.0-inch | XGA | AA150XW01/14 |
| 9.0-inch | WVGA | AA090ME01 | | SXGA+ | AA150PD03/13 |
| | WXGA | AA090TB01 | 17.5-inch | WXGA | AA175TE03 |

Environmental Awareness

The models are mercury-free and fully compliant with the Restriction of the Use of Certain Hazardous Substances in Electrical and Electronic Equipment (RoHS) directive 2011/65/EU.

###

About Mitsubishi Electric Corporation

With over 90 years of experience in providing reliable, high-quality products, Mitsubishi Electric Corporation (TOKYO: 6503) is a recognized world leader in the manufacture, marketing and sales of electrical and electronic equipment used in information processing and communications, space development and satellite communications, consumer electronics, industrial technology, energy, transportation and building equipment. Embracing the spirit of its corporate statement, Changes for the Better, and its environmental statement, Eco Changes, Mitsubishi Electric endeavors to be a global, leading green company, enriching society with technology. The company recorded consolidated group sales of 4,238.6 billion yen (US\$ 37.8 billion*) in the fiscal year ended March 31, 2017. For more information visit:

<http://www.MitsubishiElectric.com>

*At an exchange rate of 112 yen to the US dollar, the rate given by the Tokyo Foreign Exchange Market on March 31, 2017