

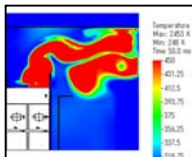
MS-E AIR-INSULATED SWITCHGEAR (7.2/12/15kV)

**TYPE-TESTED MV SWITCHGEAR
WITH INTERNAL ARC CLASSIFICATION**



SOFTWARE SIMULATION

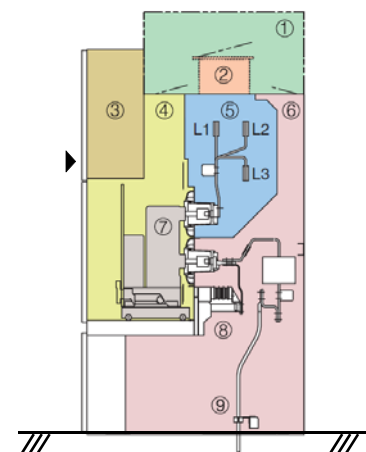
Possible to simulate IAC classifications.



Other types of switchgear can be simulated. Please contact a Mitsubishi Electric representative.

VCB & VMC INSTALLATION

MS-E can provide high-quality Mitsubishi Electric VCBs and VMCs*. (*for motor circuits)



Cross-section view

- ① Gas exhaust duct or screen (optional)
- ② Ventilator
- ③ Control compartment
- ④ Withdrawable equipment compartment
- ⑤ Busbar compartment
- ⑥ Cable compartment
- ⑦ Circuit breaker
- ⑧ ES (optional)
- ⑨ Power cable

SPECIFICATIONS	
Standards	IEC62271-200
Rated voltage (kV)	7.2 / 12 / 15 (VMC: up to 7.2kV)
Rated frequency (Hz)	50 / 60
Rated nominal current (A)	630, 1250, 2000, 3150, 4000 (4000A with force cooling)
Rated power frequency voltage (kV)	20 / 28 / 36 – 1min
Rated lightning impulse voltage (kV)	60 / 75 / 95
Rated short-time withstand current (kA)	25 / 31.5 / 40
Rated duration of short-time current (s)	3
Internal arc classification	AFL, AFLR 40kA / 1s
Dimensions [mm] (WxDxH)	800 x 1500 x 2600 (+250 for top air vent) (7.2kV Feeder)

Specifications and contents are subject to change without notice.

COPYRIGHTS

All rights reserved. This document, or parts thereof, shall not be reproduced or transferred in any form without written permission of Mitsubishi Electric Corporation.

MS-E 2-TIER AIR-INSULATED SWITCHGEAR (7.2/12kV)

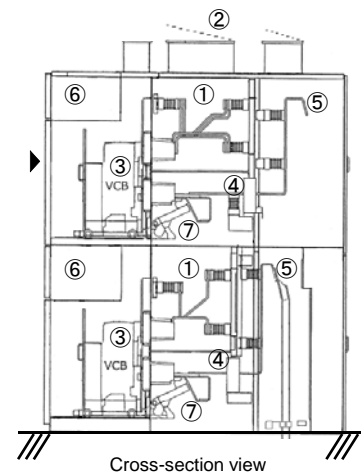
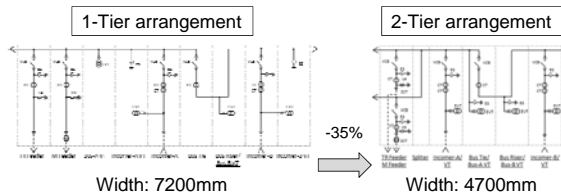
**TYPE-TESTED MV SWITCHGEAR
WITH INTERNAL ARC CLASSIFICATION**



SPACE SAVING

Example

No. of CB	
Incomer	2
Bus Tie	1
Feeder	2



- ① Main busbar
- ② Pressure relief device
- ③ VCB
- ④ CT
- ⑤ Cable terminal
- ⑥ LV compartment
- ⑦ ES

SPECIFICATIONS	
Standards	IEC62271-200
Rated voltage (kV)	7.2 / 12
Rated frequency (Hz)	50 / 60
Rated nominal current (A)	630, 1250, 2000, 3150
Rated power frequency voltage (kV)	20 / 28 – 1min
Rated lightning impulse voltage (kV)	60 / 75
Rated short-time withstand current (kA)	25 / 31.5 / 40
Rated duration of short-time current (s)	3
Internal arc classification	AFL, AFLR 40kA / 1sec
Dimensions [mm] (WxDxH)	800 x 2200 x 2600 (+235 for top air vent) (7.2kV Feeder)

Specifications and contents are subject to change without notice.

COPYRIGHTS

All rights reserved. This document, or parts thereof, shall not be reproduced or transferred in any form without written permission of Mitsubishi Electric Corporation.