

MITSUBISHI ELECTRIC CORPORATION
PUBLIC RELATIONS DIVISION
 7-3, Marunouchi 2-chome, Chiyoda-ku, Tokyo, 100-8310 Japan

FOR IMMEDIATE RELEASE

No. 3264

Customer Inquiries
 Overseas Marketing Division
 Building System Group
 Mitsubishi Electric Corporation
 bod.inquiry@rk.MitsubishiElectric.co.jp
 www.MitsubishiElectric.com/products/building/

Media Inquiries
 Public Relations Division
 Mitsubishi Electric Corporation
prd.gnews@nk.MitsubishiElectric.co.jp
 www.MitsubishiElectric.com/news/

Mitsubishi Electric to Open “TAKUMI” Inazawa Installation Training Center in Japan

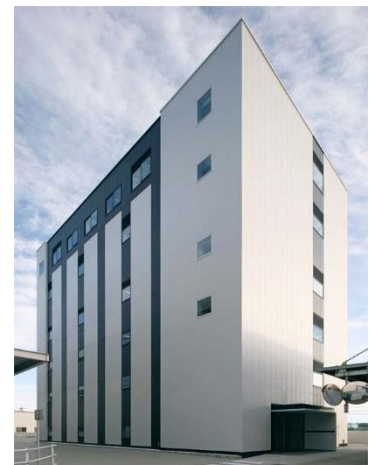
New educational system expected to enhance safety, peace of mind, and comfort

TOKYO, February 26, 2019 – [Mitsubishi Electric Corporation](http://www.mitsubishielectric.com) (TOKYO: 6503) announced today that it would commence operation of its “TAKUMI” Inazawa Installation Training Center for elevator and escalator installation training on April 1. The facility, which is named after the Japanese word for “great master,” is located on the premises of the Inazawa Works, the company’s mother factory for the manufacture of elevators and escalators, in Inazawa, Aichi Prefecture, Japan.

Mitsubishi Electric is strengthening its worldwide training of technicians to enhance the quality of its elevator and escalator installations for increased safety, peace of mind, and comfort in the global market. The company plans to increase its number of new-installation technicians in Japan up to 1,000 and installation supervisors outside Japan up to approximately 350 by the fiscal year ending in March 2020.

Details

Name	“TAKUMI” Inazawa Installation Training Center
Location	1 Hishi-machi, Inazawa, Aichi Prefecture, Japan (premises of Inazawa Works)
Building perimeter	411m ² (floor area: 2,182m ²)
Structure	Steel (6 floors above ground)
Operation	April 1, 2019
Investment	1.07 billion yen
Main facilities	- 10 shafts for hands-on installation training - 8 elevators for hands-on training - Hazard simulators
Eco-friendly equipment	- 20kW solar-power generation on roof - LED lamps for all lighting within building



“TAKUMI” Inazawa Installation Training Center

Features

1) Hands-on training with actual equipment to quickly upgrade installation skills and capabilities

- Technician trainees will use actual equipment in real environments to quickly master practical installation skills and know-how
- Training curricula will be matched to various skill levels to enhance the abilities of all technicians

2) Experimental training utilizing VR technology to heighten awareness of potential hazards and work safety

- Simulators incorporating virtual-reality (VR) technology will enable trainees to experience hazard-like conditions that could conceivably occur at installation sites
- Trainees will master installation-safety procedures by using actual equipment to practice special safety precautions, such as carrying heavy equipment, welding and working in high places

3) Stronger education for installation supervisors outside Japan to upgrade global capabilities

- Enriched education programs and a supervisor-certification system will raise the quality and the number of local installation supervisors at elevator and escalator sales companies outside Japan
- Educated supervisors will elevate the skills and safety awareness of technicians at associated companies outside Japan

About the Name “TAKUMI”

Mitsubishi Electric, known as a provider of a world’s-fastest* elevator and unique spiral escalators, installs elevators and escalators with unparalleled skill. Such installations require years of experience and accumulated skills, so the new training center has been named “TAKUMI,” which means “great master” in Japanese. The name reflects the company’s goal to nurture as many “great masters of elevators and escalators” as possible.

* According to Mitsubishi Electric research as of February 26, 2019

Background

Due to increasing demands for elevators and escalators globally, Mitsubishi Electric is facing a shortage of installation technicians both in Japan and overseas, so the company urgently needs to expand the scale and expertise of its installation workforce. So far, installation training has been provided at the facilities of associated companies worldwide, but market conditions now require facilities with various types of equipment for special training in Japan as well as more highly skilled supervisors to educate technicians outside Japan.

###

About Mitsubishi Electric Corporation

With nearly 100 years of experience in providing reliable, high-quality products, Mitsubishi Electric Corporation (TOKYO: 6503) is a recognized world leader in the manufacture, marketing and sales of electrical and electronic equipment used in information processing and communications, space development and satellite communications, consumer electronics, industrial technology, energy, transportation and building equipment. Embracing the spirit of its corporate statement, Changes for the Better, and its environmental statement, Eco Changes, Mitsubishi Electric endeavors to be a global, leading green company, enriching society with technology. The company recorded consolidated group sales of 4,444.4 billion yen (in accordance with IFRS; US\$ 41.9 billion*) in the fiscal year ended March 31, 2018. For more information visit:

www.MitsubishiElectric.com

*At an exchange rate of 106 yen to the US dollar, the rate given by the Tokyo Foreign Exchange Market on March 31, 2018