

## CSR Management

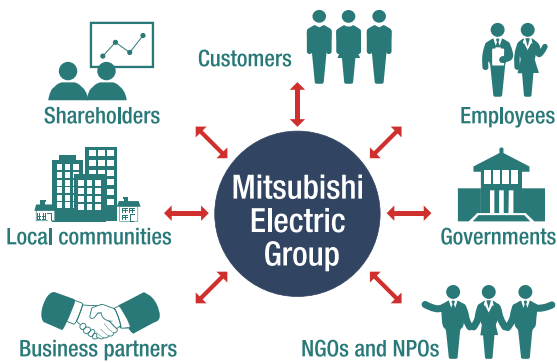
### Principles of CSR

The Mitsubishi Electric Group regards its corporate social responsibility (CSR) initiatives as the foundation of its corporate management, and upholds its Corporate Mission and Seven Guiding Principles as the basic policies of its CSR. Particularly with respect to initiatives related to ethics and legal compliance, Group-wide efforts are made to enforce measures such as enhancing training and strengthening internal controls. Active measures are also taken to ensure and improve quality assurance, environmental preservation activities, philanthropic activities, and communication with stakeholders.

### Mitsubishi Electric Group's stakeholders

To achieve sustainable growth, the Mitsubishi Electric Group must maintain communication with its various stakeholders. We have a corporate social responsibility to reflect the expectations, requests, and opinions of each stakeholder in our corporate activities, and to increase our positive impact on society while reducing any negative impact.

To help maintain communication with stakeholders, we have established "Four Satisfactions" as a management policy, with the aim of satisfying all of our stakeholders, including society, customers, shareholders, and employees.



Stakeholders of the Mitsubishi Electric Group



Pursue the Satisfaction of the Four Stakeholder Categories

### Promotional System for CSR

The policies and planning for the CSR activities of the Mitsubishi Electric Group are decided by a CSR Committee appointed by Mitsubishi Electric's executive officers. The Committee is composed of the heads of Mitsubishi Electric's management departments (19 members in charge of environmental, social and governance aspects from divisions such as Corporate Strategic Planning and Corporate Human Resources), and discusses the results of activities performed during the previous fiscal year, decisions on future activity plans, and responses to law amendments, from a perspective that spans the entire Mitsubishi Electric Group.

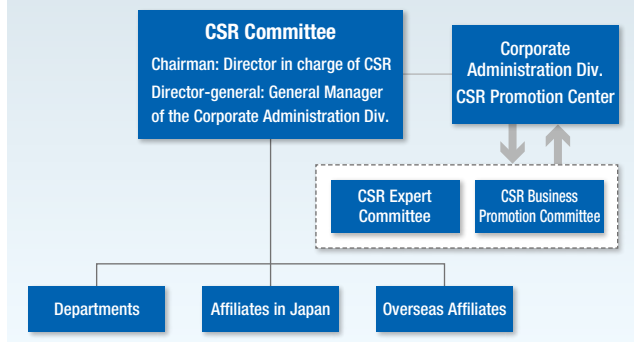
Knowing that CSR activities are directly linked to corporate management, each department responsible for ethics and legal compliance, quality assurance and improvement, environmental conservation and philanthropy activities, and communication with stakeholders implements their own initiatives, based on the CSR policy of the Mitsubishi Electric Group.

In addition to the CSR Committee that is generally held once a year, various activities are also promoted and implemented in communication with the CSR Expert Committee and CSR Business Promotion Committee, which are convened as a forum for sharing and executing the policies and plans established by the CSR Committee.

#### Main agenda of the CSR Committee (held in April 2019)

- Report on achievements made in the previous fiscal year and activities planned in the current fiscal year
- Response to the sustainable development goals (SDGs)
- Further enhancement of information disclosure by taking into account ESG (environment, social, governance) investment
- Human rights initiatives
- Supply chain management
- Long-term environmental vision

#### CSR Promotion System



## CSR Materiality and SDGs Management

### CSR Materiality

Considering requests from the Global Reporting Initiative (GRI)\*, social trends and the business environment, in fiscal 2016 the Mitsubishi Electric Group identified CSR materiality and targets / Key Performance Indicators (KPI) to fulfill the materiality towards realizing the further integration of CSR with management and the long-term advancement of CSR initiatives.

We will implement activities to continuously improve our performance related to CSR materiality and targets / Key Performance Indicators (KPI) based on the PDCA (Plan-Do-Check-Action) Cycle approach.

\*An international body that proposes shared global guidelines for corporate sustainability reporting

CSR materiality	Reasons why is it important
 <p><b>Realize a sustainable society</b></p>	Environmental issues including climate change and resource and energy issues are global issues. The Mitsubishi Electric Group will contribute to solving these issues with the aim of realizing a sustainable society.
 <p><b>Provide safety, security, and comfort</b></p>	Various issues are becoming evident due to urbanization and other reasons. The Mitsubishi Electric Group will provide safety, security, and comfort while contributing to solving issues with a focus on city development.
 <p><b>Respect human rights and promote the active participation of diverse human resources</b></p>	Human rights and diversity are global issues. As a global company, the Mitsubishi Electric Group will grapple with these issues. Diversity is also crucial for creating innovation, which is the source of the Group's strength.
 <p><b>Strengthen corporate governance and compliance on a continuous basis</b></p>	Corporate governance and compliance are fundamental preconditions for a company's continued existence. The Mitsubishi Electric Group will continue to strengthen these areas.

### Initiatives to Address the SDGs

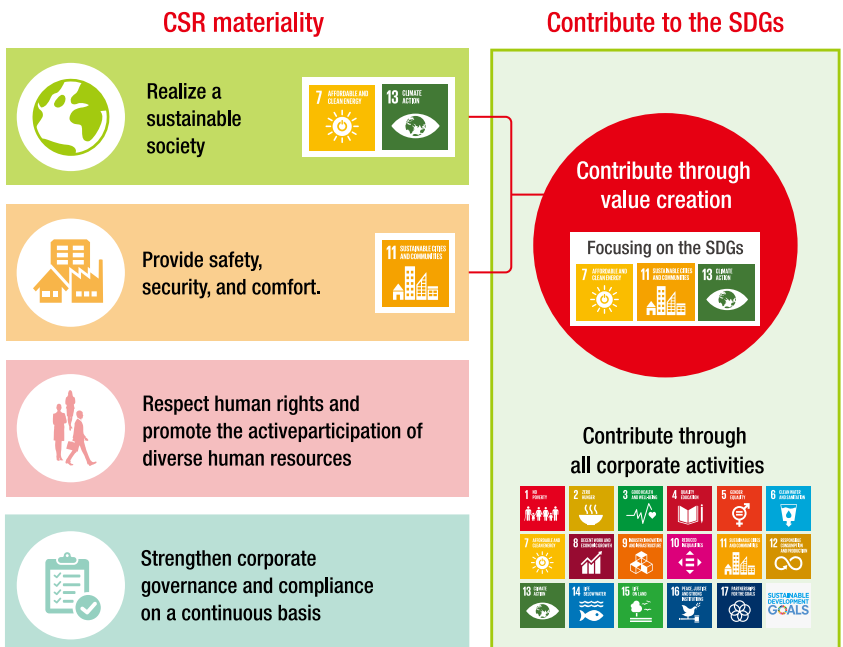
The Mitsubishi Electric Group, which is committed to enhancing the quality of life in our society, as stated in our corporate mission, will contribute to accomplishing the 17 goals of the SDGs, through the Group's diverse businesses as well as all corporate activities related to the environment, society and governance (ESG), for solving challenges in society.

In fiscal 2019, we decided on goals that we would address on a priority basis to further contribute to the SDGs.

- Goal 7: Affordable and Clean Energy
- Goal 11: Sustainable Cities and Communities
- Goal 13: Climate Action

By further promoting initiatives to create value for these goals to which we can contribute significantly as a comprehensive electrical and electronics manufacturer, we will make a specific contribution to achieving the SDGs.

In doing this, the Mitsubishi Electric Group will integrate the concept of the SDGs into its management strategy and contribute to the SDGs that we will prioritize through the CSR materiality initiatives of "Realize a Sustainable Society," and "Provide Safety, Security, and Comfort."



CSR Materiality and SDGs