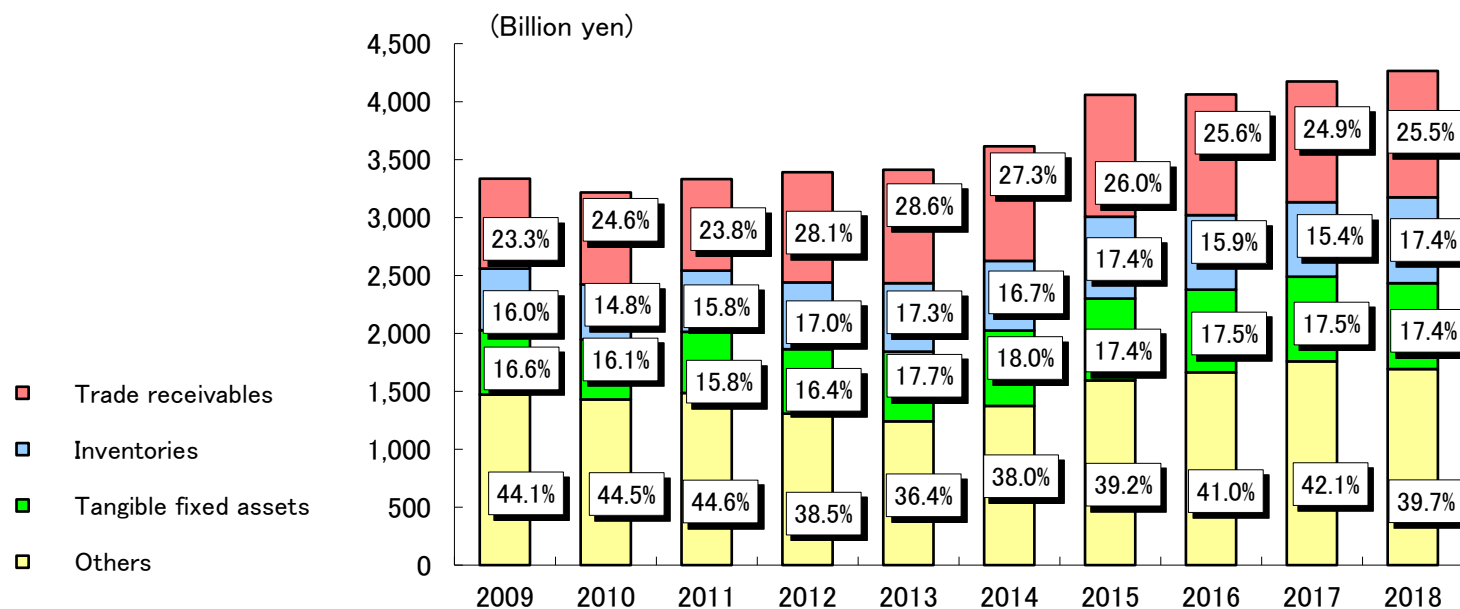
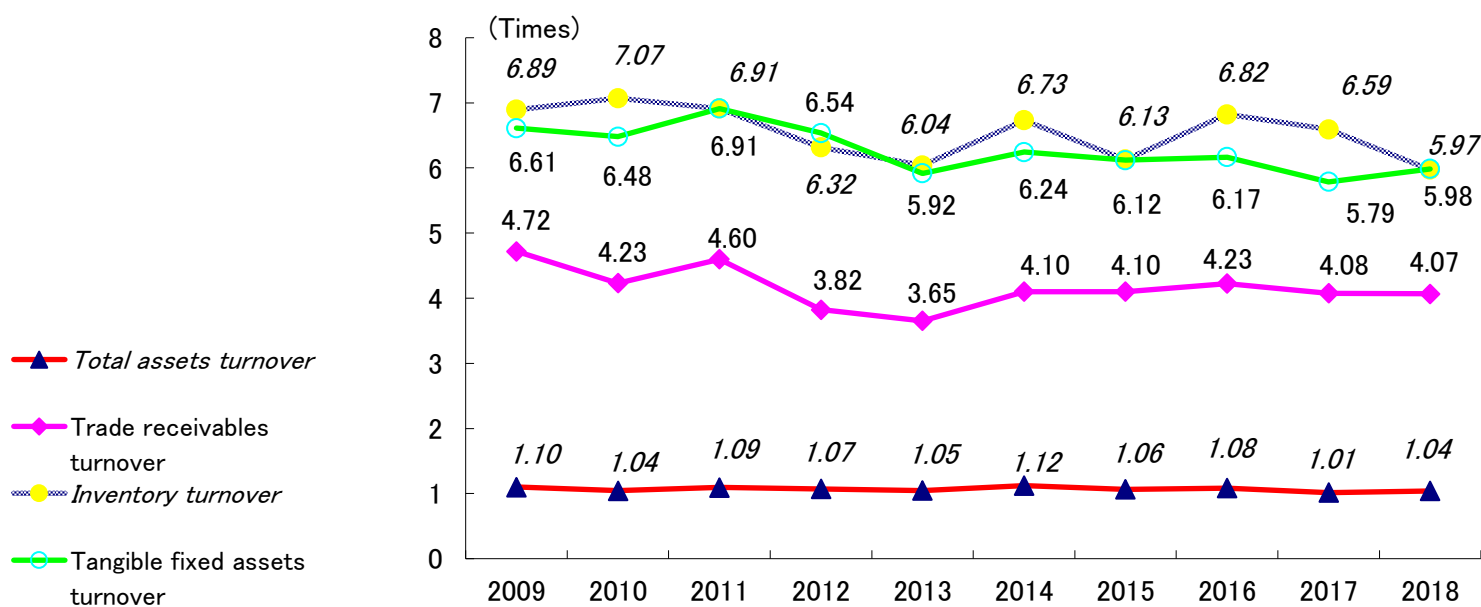


ASSETS AND TURNOVER

Assets Components and Total Assets (資産構成及び総資産)



Turnover (回転率)



(Million yen)

Years ended March 31	2009	2010	2011	2012	2013	2014	2015	2016	2017	2018
Total assets	3,334,123	3,215,094	3,332,679	3,391,651	3,410,410	3,612,966	4,059,451	4,059,941	4,172,270	4,264,559
Trade receivables	776,485	792,314	793,081	951,753	977,026	988,281	1,054,175	1,039,829	1,040,016	1,089,558
Inventories	531,603	474,204	527,504	576,179	590,735	602,341	705,420	644,127	643,040	741,782
Tangible fixed assets	554,424	517,534	527,453	556,845	603,000	649,385	706,475	712,599	732,611	740,448

(Times)

Years ended March 31	2009	2010	2011	2012	2013	2014	2015	2016	2017	2018
Total assets turnover	1.10	1.04	1.09	1.07	1.05	1.12	1.06	1.08	1.01	1.04
Trade receivables turnover	4.72	4.23	4.60	3.82	3.65	4.10	4.10	4.23	4.08	4.07
Inventory turnover	6.89	7.07	6.91	6.32	6.04	6.73	6.13	6.82	6.59	5.97
Tangible fixed assets turnover	6.61	6.48	6.91	6.54	5.92	6.24	6.12	6.17	5.79	5.98