

**FOR IMMEDIATE RELEASE**

**No. 3913**

*Customer Inquiries*

*Media Inquiries*

Defense & Space Solution Division  
Defense & Space Systems Group  
Mitsubishi Electric Corporation

Public Relations Division

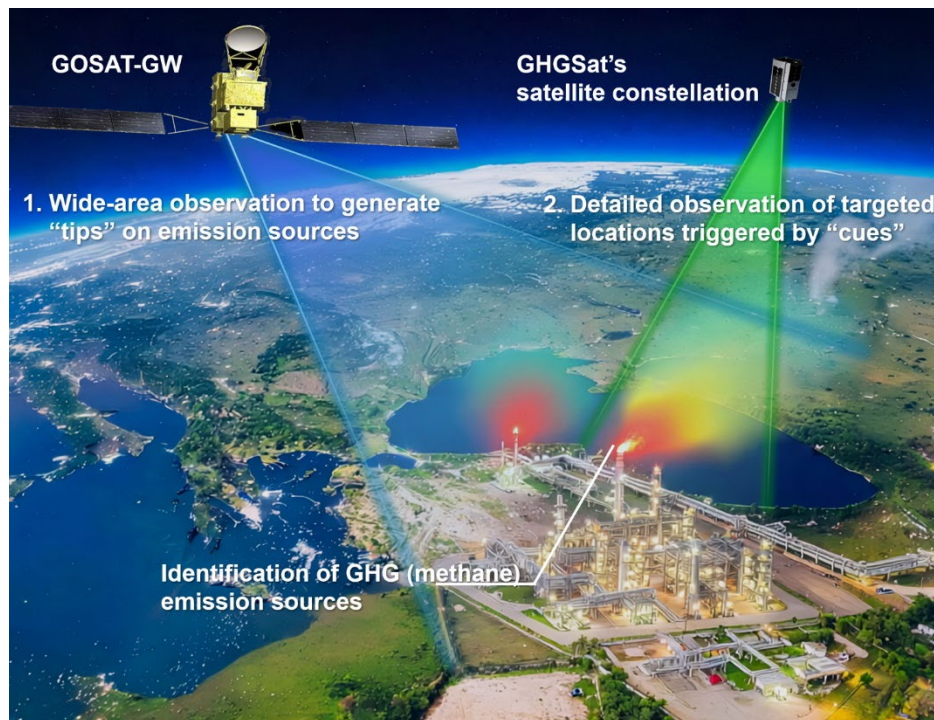
Mitsubishi Electric Corporation

[eosolution@nw.MitsubishiElectric.co.jp](mailto:eosolution@nw.MitsubishiElectric.co.jp)  
[www.MitsubishiElectric.com/](http://www.MitsubishiElectric.com/)

[prd.gnews@nk.MitsubishiElectric.co.jp](mailto:prd.gnews@nk.MitsubishiElectric.co.jp)  
[www.MitsubishiElectric.com/en/pr/](http://www.MitsubishiElectric.com/en/pr/)

## **Mitsubishi Electric Joins Publicly Solicited Project to Verify System for Identifying Greenhouse Gas Emission Sources**

*Aims to commercialize service that uses satellite data to visualize GHG emissions*



Envisioned system for identifying GHG emission sources using GOSAT-GW and GHGSat's satellite constellation

**TOKYO, June 25, 2026** – [Mitsubishi Electric Corporation](https://www.mitsubishi-electric.com) (TOKYO: 6503) announced today that it was selected by the Japan Organization for Metals and Energy Security (JOGMEC) as a contractor to verify technologies that use satellite data to identify and measure sources of greenhouse gas (GHG) emissions. This publicly solicited project will be carried out during the current fiscal year ending in March 2027. Following the selection, Mitsubishi Electric formally signed a contract with JOGMEC to join the project.

Mitsubishi Electric will verify the effectiveness of technologies that use satellite data to identify and quantify methane emission sources. The ultimate goal is to develop a service that visualizes emissions and provides this information to companies, local governments and other users. For the project, the company will collaborate

with Satellite Data Services Co., Ltd., JGC Corporation, Mitsubishi Electric Software Corporation and GHGSat Inc., as well as leverage the expertise of MUFG Bank, Ltd., a Mitsubishi Electric partner.

Accurately understanding emission sources and volumes is critical to reducing GHG emissions and addressing global warming. Methane, the main component of liquefied natural gas (LNG) used for thermal power generation, has a higher global warming potential than CO<sub>2</sub>. In the energy sector, including LNG supply chains, there is a growing demand to identify methane emission sources, detect leaks early and improve transparency regarding actual emissions.

In 2024, Mitsubishi Electric began collaborating with MUFG Bank, Satellite Data Services and GHGSat to develop a service that visualizes GHG emissions and identifies the sources using data acquired from GHGSat's satellite constellation and a satellite, the Global Observing SATellite for Greenhouse gases and Water cycle (GOSAT-GW<sup>1</sup>), which was launched on June 29, 2025. The companies have been studying the feasibility of a "tip & cue" operation in which GOSAT-GW, which is suited for wide-area observation, efficiently identifies areas where GHG emissions may be occurring and then provides "tips" on locations where abnormalities are suspected. Detailed observations of the targeted locations are then conducted by sending "cues" to GHGSat's satellite constellation, which is suited for localized, high-resolution observations.

For JOGMEC's publicly solicited project, Mitsubishi Electric will apply knowledge and expertise from its own previous studies as well as satellite data acquired with the GOSAT-GW satellite and GHGSat's satellite constellation. The goal is to verify accurate detection and quantification of methane emissions under field conditions. The company will also determine technical requirements and operational procedures for practical implementation.

In addition, Mitsubishi Electric will evaluate the feasibility of applying satellite-based methane emission measurements to the Oil & Gas Methane Partnership 2.0 (OGMP 2.0). The partnership, led by the United Nations Environment Programme (UNEP), is a comprehensive measurement-based international reporting framework for the oil and gas industry, aimed at reducing methane emissions, improving the accuracy of emission measurements, and increasing transparency in emission reporting. Mitsubishi Electric will compile the findings for use in demonstrations and eventual commercialization. The company will also study the possibility of conducting joint demonstrations using satellite data in a top-down approach<sup>2</sup> at natural gas and LNG production facilities.

---

<sup>1</sup> A satellite jointly operated by the Ministry of the Environment, the National Institute for Environmental Studies, and the Japan Aerospace Exploration Agency. Mitsubishi Electric served as the prime contractor and was responsible for developing the satellite system and onboard sensors, TANSO-3 and AMSR3.

<sup>2</sup> A method for measuring methane concentrations in the atmosphere on a macro scale using satellites, ground-based observation stations and other observation tools. In contrast, a bottom-up approach measures methane leakage volumes at individual facilities or equipment and aggregates the resulting data.

### **Roles in JOGMEC Project**

Company	Roles
Mitsubishi Electric	<ul style="list-style-type: none"><li>- Overall project management, and planning and executing field verifications</li><li>- Overall management of satellite data analysis</li><li>- Assessment of joint demonstrations and applicability to OGMP 2.0</li></ul>
Satellite Data Services	<ul style="list-style-type: none"><li>- Coordination with GHGSat and procurement of data; and coordination with organizations operating candidate demonstration facilities</li><li>- Support for assessment of joint demonstrations and applicability to OGMP 2.0</li></ul>
JGC	<ul style="list-style-type: none"><li>- Support for evaluation during field verifications</li><li>- Support for assessment of applicability to OGMP 2.0</li><li>- Provision of expertise related to methane emissions management at natural gas and LNG production facilities</li></ul>
Mitsubishi Electric Software	<ul style="list-style-type: none"><li>- Analysis of acquired satellite data</li></ul>
GHGSat	<ul style="list-style-type: none"><li>- Observations via satellite constellation</li><li>- Analysis and provision of satellite data</li></ul>
MUFG Bank	<ul style="list-style-type: none"><li>- Support for assessment of joint demonstrations and applicability to OGMP 2.0</li><li>- Support for research on industry and market trends</li></ul>

### **Future Plans and Prospects**

Mitsubishi Electric aims to verify the accuracy of using satellite data to detect and quantify GHG emission sources. It will also assess the time required from observation to information provision and the operational procedures required for conducting such a service. In addition, the company will develop the necessary processing flows and decision logic. Through these efforts, Mitsubishi Electric plans to create tip & cue operations that combine the precise, wide-area observation capabilities of GOSAT-GW with the high-resolution observation capabilities of GHGSat's satellite constellation. The company will work to commercialize a service that provides users with easy-to-understand visualizations of GHG emissions and gas-leak abnormality alerts. By providing this service, Mitsubishi Electric expects to support these entities in their efforts to reduce GHG emissions and contribute to a more sustainable world.

###

### **About Mitsubishi Electric Corporation**

Guided by its [corporate philosophy](#), Mitsubishi Electric Corporation (TOKYO: 6503) places sustainability at the core of its operations and values stakeholder trust—encompassing society, customers, shareholders and employees. In pursuing profitability, capital efficiency and growth, Mitsubishi Electric works closely alongside customers to develop value-added solutions that address today's complex challenges while enhancing the company's sustainable corporate value.

Founded in 1921, Mitsubishi Electric has over a century of experience in delivering reliable, high-quality products and solutions. With over 200 group companies and approximately 150,000 employees worldwide, the company is a recognized global leader in manufacturing, marketing and selling electrical and electronic equipment and systems across a broad range of sectors, including public utility systems, energy systems, defense and space systems, factory automation systems, automotive equipment, building systems, air conditioning systems & home products, digital innovations, and semiconductor & devices.

Mitsubishi Electric recorded consolidated revenue of 5,894.7 billion yen (U.S.\$ 36.8 billion\*) in the fiscal year that ended on March 31, 2026. For more information, please visit [www.MitsubishiElectric.com](http://www.MitsubishiElectric.com)

\*JPY 160=USD 1, the approximate rate on the Tokyo Foreign Exchange Market on March 31, 2026