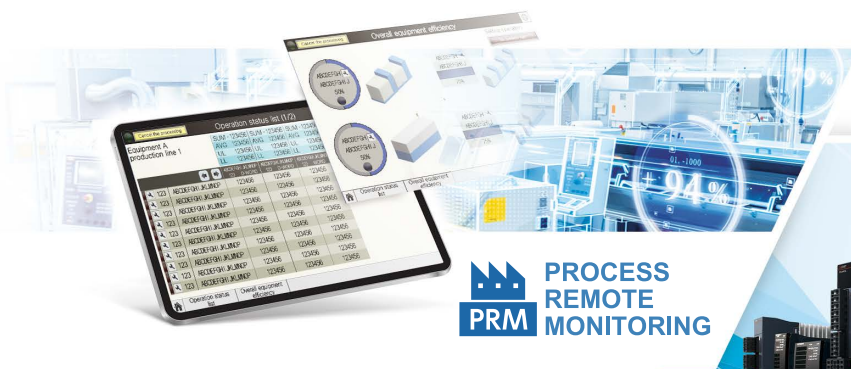


**Graphic Operation Terminal  
GOT2000 NEWS Vol.18**

GT Works3 Ver.1.275M  
(May 2022 Release)

**GT Designer3**  
**GT SoftGOT2000**



MITSUBISHI ELECTRIC SERVO SYSTEM  
**MELSERVO-J5**



**NEWS 1**

**Microsoft® Windows® 11 supported**  
GT Designer3 Version1 (GOT2000) and  
GT SoftGOT2000 Version1 are now compatible

**NEWS 4**

**GOT Drive (servo) supported connection  
with MR-J5-□B**

**NEWS 2**

**GT Reporting Tool function upgrade**

**NEWS 5**

**Alarm notifications on Pocket GOT and  
a smart watch**

**NEWS 3**

**iQ Monozukuri Process Remote Monitoring  
function upgrade**

**NEWS 6**

**Other additional functions**



## Microsoft® Windows® 11 supported

GT Designer3 Version1 (GOT2000) and GT SoftGOT2000 Version1 are now compatible

Software included in or related to MELSOFT GT Works3, such as GT Designer3 Version1 (GOT2000) and GT SoftGOT2000 Version1, now supports Windows® 11. For the details, please contact your local sales office.

Microsoft and Windows are registered trademarks of Microsoft Corporation in the United States and other countries.



## GT Reporting Tool function upgrade

- GT27
- GT25
- GT23
- GT21
- GS21
- GT SoftGOT2000\*1

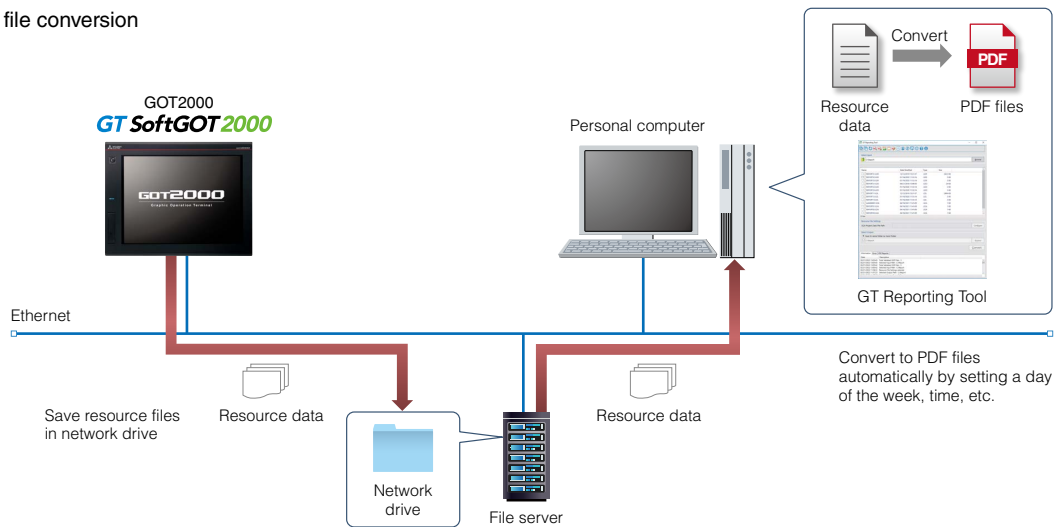
GT Reporting Tool is the software that creates PDF files on a personal computer by converting the resource data created with GOT2000 or GT SoftGOT2000\*1. Unauthorized use can be prevented by setting security for PDF files.

In addition, automatic conversion to PDF files is available. Files can be automatically converted by setting the network drive as the destination to save the GOT resource data and then setting the network drive as the file server for GT Reporting Tool to access.

For the details, please refer to the Help for GT Reporting Tool.

\*1 Restrictions apply to some functions. For the details, please refer to "Available functions and file types" on page 3.

### Automatic file conversion



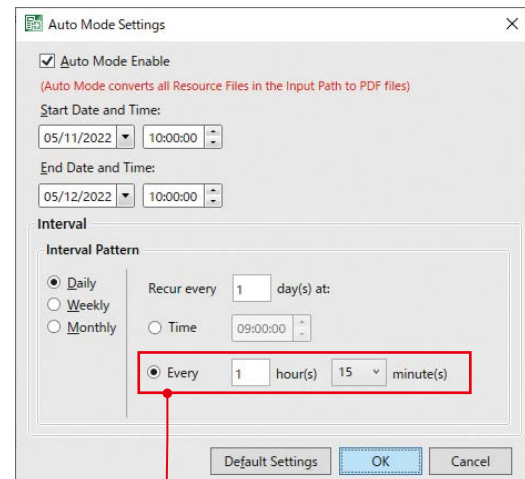
## 7 new useful functions of GT Reporting Tool

### 1 Setting automatic conversion at 15-minute intervals

The interval of automatic PDF conversion can be set flexibly every 15 minutes considering the data amount of resource data. If the resource file generation cycle is short, making the PDF conversion interval short can reduce the processing time of each process and balance workloads. In addition, frequently converted PDF files can be used as data backup.

#### Interval settings

Interval pattern	Item
Daily	Every n day(s)
	Time
	Every n hour(s)
	Every n minute(s)
Weekly	Every n week(s)
	Day of the week
	Time
Monthly	Day n of every n month(s)
	Time



1 Set the interval pattern for automatic conversions in 15-minute increments (Select from 00, 15, 30, 45)

### 2 Adding header and footer in PDF files

Up to five lines of comments can be output to header and footer in the left, center, and right of a PDF file. Adding detail information of the resource file helps understand the contents.

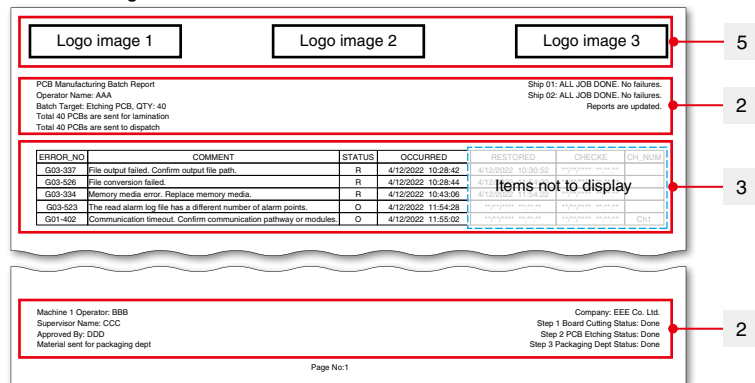
### 3 Flexibly selecting display items

Only necessary items can be displayed by selecting display items for each file type.

Supported file type: G2A (system alarm),  
G2A (user alarm),  
G2O (operation log file)

#### PDF file image

#### Example) G2A (system alarm) file



### 4 Adding resource file information

The resource data file information can be added to the first page of the PDF file.

Supported file type: G2A (alarm file),  
G2L (logging file),  
G2O (operation log file)

#### Point

Some functions of GT Reporting Tool can be executed with a command line. It is useful for converting multiple files at once because the header and footer can be added and the display item selection can be executed with a command line.

### 5 Setting multiple logos

Logos can be added to the top left, top center, and top right of the file.

### 6 Selecting display language of operation log file

Select a display language from English or Japanese for the Action column of the operation log file (\*.G2O).

### 7 Outputting status log file in PDF format

The status log of GT Reporting Tool can be output not only in text but also in PDF format.

#### Available functions and file types

No.	Function	Alarm file (*.G2A)*2	Logging file (*.G2L)	Operation log file (*.G2O)	Report file (*.G2R)*2
1	Setting automatic conversion at 15-minute intervals.	✓	✓	✓	✓
2	Adding header and footer in PDF files	✓	✓	✓	✓
3	Flexibly selecting display items	✓	—	✓	—
4	Adding resource file information	✓	✓	✓	—
5	Setting multiple logos	✓	✓	✓	✓
6	Selecting display language of operation log file	—	—	✓	—
7	Outputting status log file in PDF format	✓	✓	✓	✓

\*2 GT SoftGOT2000 does not support outputting files of this format.

# NEWS 3 iQ Monozukuri Process Remote Monitoring function upgrade

iQ Monozukuri Process Remote Monitoring Version 1.010L or later

1 Template screens for the GOT Mobile function **NEW** have been added to the iQ Monozukuri Process Remote Monitoring template project for GT SoftGOT2000\*1

Use a mobile terminal to access GT SoftGOT2000, which works as a server of the GOT Mobile function, and monitor the screens such as the operation status list and the overall equipment efficiency. Template screens are designed for easy remote monitoring of the data that Process Remote Monitoring setting tool collected from multiple devices.

\*1 An iQ Monozukuri Process Remote Monitoring template project for GT SoftGOT2000 is the project data (template screens) for GT SoftGOT2000 to visualize information that the Process Remote Monitoring setting tool collected from on-site GOTs. To use the template screens for GT SoftGOT2000 with the GOT Mobile function, it is required to purchase iQ Monozukuri Process Remote Monitoring Version 1.010L and install GT SoftGOT2000 Version 1.265B or later.

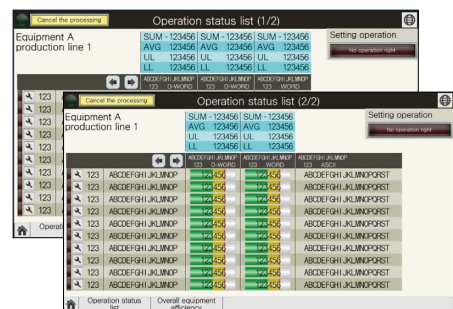
**NEW**

**■ Template screens for the GOT Mobile function that can be used on GT SoftGOT2000**

### Operation status list

The operation status list is displayed on a client.

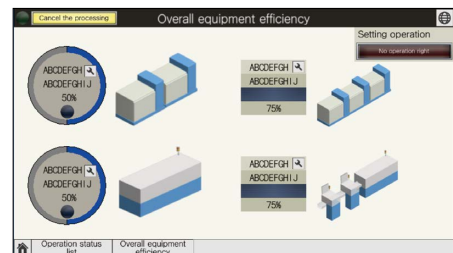
The screen displays the operation statuses of selected on-site GOTs (devices) in a table format. In addition to the sum and average of values in each column, the upper limit value and the lower limit value set in GT SoftGOT2000 are displayed.



### Overall equipment efficiency

The operation equipment efficiency screen is displayed on a client.

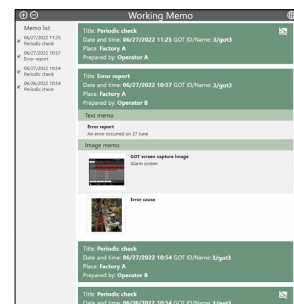
The screen displays the operation statuses of selected on-site GOTs (devices) with overall equipment effectiveness (OEE) on a schematic diagram of the production line.



### Working memo screen\*2

Up to the latest 20 working memos can be displayed on a client.

\*2 To display a working memo on a client, the html file (AutoExtraction.html) of the working memo must be published on a web page. For the details, please refer to the iQ Monozukuri Process Remote Monitoring Instruction Manual.



## iQ Monozukuri Process Remote Monitoring

iQ Monozukuri Process Remote Monitoring is an application package to easily introduce IoT technologies to the shop floor, collect and visualize information of multiple devices, and collectively manage the information.

### Pocket GOT

Pocket GOT is a mobile app for GOT (Graphic Operation Terminal). With functions such as notification of alarms generated by the monitored GOT, the app supports remote monitoring and management on mobile terminals in conjunction with GOT.



iQ Monozukuri Process Remote Monitoring (L(NA)08674ENG)



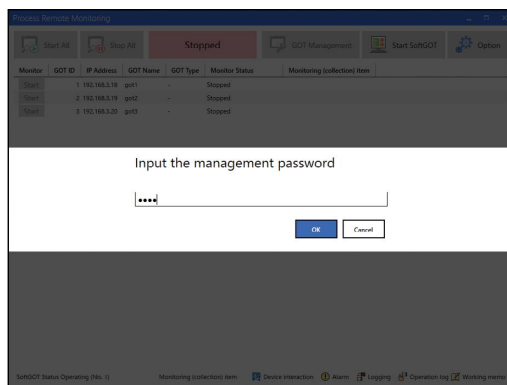
GOT2000 NEWS Vol.16 (L(NA)08808ENG)



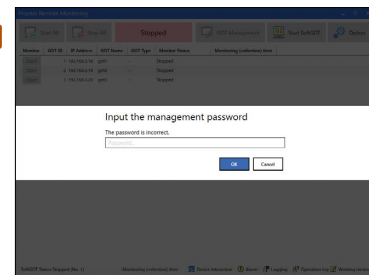
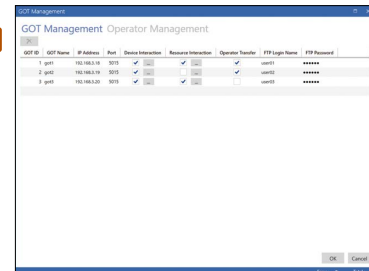
## 2 Protecting settings of Process Remote Monitoring setting tool and collected data with a management password

Password authentication is available when accessing specific screens\*1 by setting a management password in Process Remote Monitoring setting tool in advance. Protecting important settings and data with passwords strengthen security.

\*1 GOT Management, Deactivation, Backup/Restore, Collected data management.



Login OK

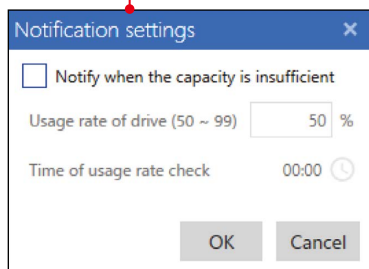
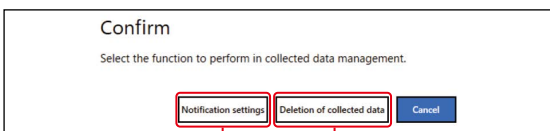


## 3 Deleting collected data with Process Remote Monitoring setting tool

Process Remote Monitoring setting tool displays the list of data collected by Resource Interaction. Keep only the relevant data, and delete unneeded items from the list. In addition, excessive use of the drive space is avoided by configuring settings to notify when the collected data amount exceeds the specified usage rate of the drive.

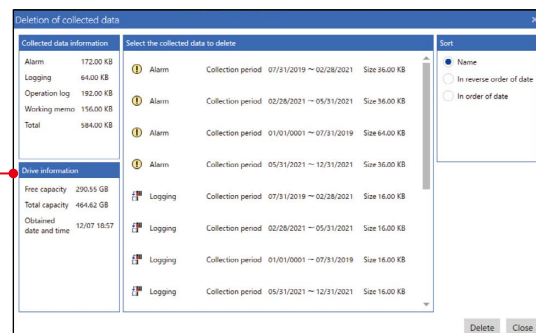


"Process Remote Monitoring" screen → [Option] button → [Collected Data Management]



Notification settings screen

Set the usage rate of drive and the time of usage rate check



Deletion of collected data screen

# GOT Drive (servo) supported connection with MR-J5-□B

- GT27
- GT25
- GT23
- GT21\*1
- GS21\*1
- GT SoftGOT2000 (Multi-channel)

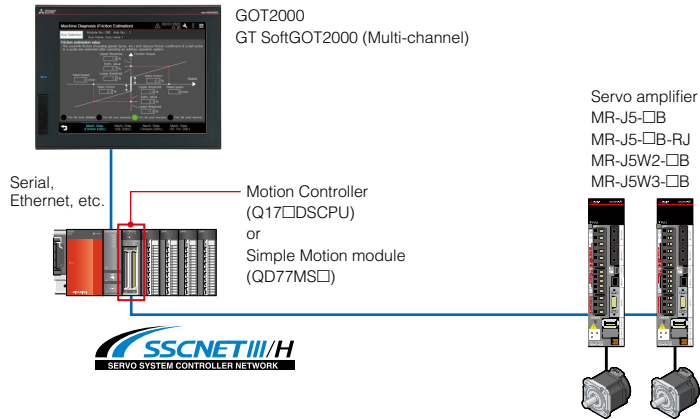
\*1 Sample screens are not supported by GT21 and GS21.

Connection to MR-J5-□B servo amplifiers is supported via Motion Controller (Q17□DSCPU) or Simple Motion module (QD77MS□).

### Target models

Series	Model
MR-J5	MR-J5-□B
	MR-J5-□B-RJ
	MR-J5W2-□B
	MR-J5W3-□B

### System configuration example



### MR-J5-□B sample screens\*1

Sample screens are available for changing parameters, monitoring, and performing test operations of servo amplifiers from GOT2000. Sample screens can be used by selecting the whole project or individual screens.

\*1 Sample screens are not supported by GT21 and GS21.

### [Screen specifications]

GOT type: GT27\*1-V (640 × 480)

\* The data can be used for GOTs with different resolutions by changing the GOT type.

### [Compatible language]

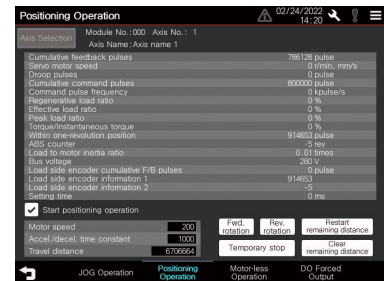
English, Japanese, Chinese (Simplified)

### [Required GT Works3 version]

GT Works3 Ver.1.270G or later



Tuning



Positioning operation

### How to obtain sample screens

The sample screens will be included in the upcoming version of HMI/GOT Screen Design Software GT Works3. For the details, please contact your local sales office.

## GOT Drive

The GOT2000 provides advanced functionality and improves connectivity with Mitsubishi servo systems with some functions of MR Configurator2.

The GOT Drive enhanced functionality is designed to eliminate need for additional hardware, software and suits customers' applications to speed up system startup and adjustment work.

For the details, please refer to the GOT2000 Drive Control (Servo) Interactive Solutions catalog (L(NA)08335ENG).

Revising

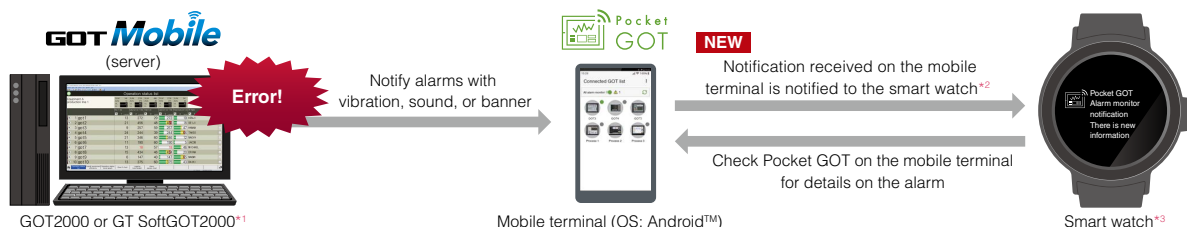


**NEWS**  
**5**

## Alarm notifications on Pocket GOT and a smart watch

GT27  GT25  GT23  GT21  GS21  GT SoftGOT2000\*1

Configure the settings so that the notifications sent from the GOT Mobile function server to the mobile terminal are notified to a smart watch. This enables the smart watch to receive alarm notifications via the mobile terminal.



\*1 To use GT SoftGOT2000 with the GOT Mobile function, it is recommended to use GT SoftGOT2000 (multiple channels). The GOT Mobile function cannot be used with Windows® 7, Windows® 8.1, or Windows® 10 Home edition.

\*2 Settings are not required for Pocket GOT. For how to configure the settings to notify the notifications displayed on the mobile terminal to a smart watch, please refer to the manual of the mobile terminal or the smart watch to be used.

\*3 Smart watch compatible with Android™ OS can be used.

**NEWS**  
**6**

## Other additional functions

Supported the following connections and functions.

◎ : Supported in GT Works3 Version 1.275M ○ : Supported – : Not supported

No.	Connection and function	GT27	GT25	GT23	GT21	GS21	GT SoftGOT2000 (Multi-channel)
1	Supported the CC-Link IE TSN protocol version 2.0.	◎	◎	—	—	—	—
2	Supported Ethernet connection to OMRON NJ Series and NX Series programmable controllers.	○	○	○	○	○	◎
3	Supported Ethernet connection to AB Control/CompactLogix (Tag).	○	○	○	—	—	◎
4	Supported the bit specification of double-word devices when connecting to AB Control/CompactLogix (Tag).	◎	◎	◎	—	—	◎

The release date varies depending on the product and your region. For details, please contact your local sales office.

The actual color may differ slightly from the pictures in this catalog.  
The actual display may differ from what are shown on GOT screen images.

**⚠ Precautions for safe use**  
To use the products given in this publication properly, always read the relevant manuals before beginning operation.

**™ Trademarks and registered trademarks**  
All product and company names used herein are either trademarks or registered trademarks of their respective owners.

## MITSUBISHI ELECTRIC CORPORATION

HEAD OFFICE: TOKYO BLDG., 2-7-3, MARUNOUCHI, CHIYODA-KU, TOKYO 100-8310, JAPAN  
NAGOYA WORKS: 1-14, YADA-MINAMI 5, HIGASHI-KU, NAGOYA, JAPAN

Country/Region Sales office  
USA .....+1-847-478-2100  
Mexico .....+52-55-3067-7512  
Brazil .....+55-11-4689-3000  
China .....+86-21-2322-3030  
Taiwan .....+886-2-2299-2499  
Korea .....+82-2-3660-9569

Singapore .....+65-6473-2486  
Malaysia .....+60-3-7626-5000  
Indonesia .....+62-21-3192-6461  
Vietnam .....+84-28-3910-5945  
Thailand .....+66-2092-8600  
Philippines .....+63-(0)2-8256-8042

India .....+91-20-2710-2000  
Australia .....+61-2-9684-7777  
Germany .....+49-2102-486-0  
UK .....+44-1707-28-8780  
Italy .....+39-039-60531  
Spain .....+34-935-65-3131

France .....+33-1-55-68-55-68  
Czech Republic .....+420-255-719-200  
Turkey .....+90-216-969-2500  
Poland .....+48-12-347-65-00  
Russia .....+7-812-449-51-34  
South Africa .....+27-11-658-8100