

**Specification change of packaging box for MCCB and ELCB**

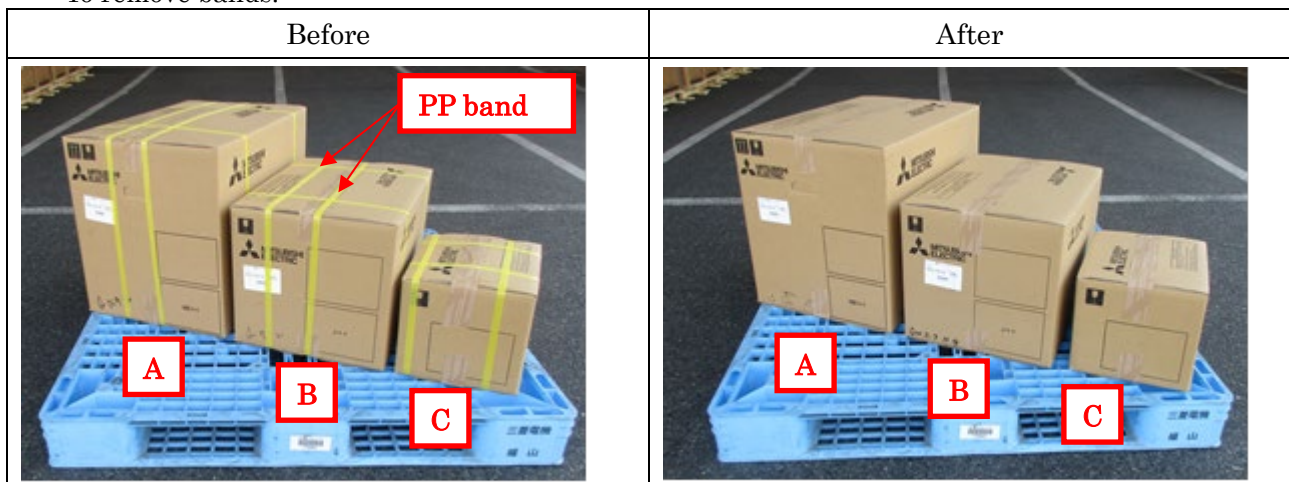
We would like to inform that we will change the specification of packaging box for MCCB, ELCB and related models.

**1. Types**

MCCB	NF32-CVF/SVF, NF63-CVF/SVF, NF125-CVF/SVF NF32-SV, NF63-CV/SV/HV, NF125-CV/SV/HV/SEV/HEV NF250-CV/SV/HV/SEV/HEV, NF400-CW/SW/HEW/REW/UEW NF63-HRV, NF125-RV/UV, NF250-RV/UV NF63-HDV, NF125-HDVA, NF250-HDVA, NF400-HDW
ELCB	NV32-CVF/SVF, NV63-CVF/SVF, NV125-CVF/SVF NV32-SV, NV63-CV/SV/HV, NV125-CV/SV/HV NV250-CV/SV/HV, NV400-CW/SW NV-L22TZU, NV-L22TYU, NV-L22AMU
UL 489 Listed Circuit Breaker	NF50-SVFU, NF100-CVFU, NF125-SVU/HVU, NF250-CVU/SVU/HVU NF50-SMU, NF100-SRU/HRU NF30-FAU, NF50-FAU/FHU, NF100-FHU, NF400-SWU/HWU, NF630-SWU/HWU NV50-SVFU, NV100-CVFU, NV125-SVU/HVU, NV250-CVU/SVU/HVU NV100-SRU/HRU NV30-FAU, NV50-FAU/FHU, NV100-FHU NV400-SWU/HWU
Disconnecter	DSN32-SV, DSN63-CV/SV, DSN125-CV/SV, DSN250-CV/SV DSN400-CW/SW, DSN630-CW/SW DSN400-HDW
Circuit Protector	CP30-BA, CP30-HU
Earth Leakage Relay	NV-ZHA, NV-ZLA
ZCT	ZT15B, ZT30B, ZT40B, ZT60B, ZT80B, ZT100B
Accessory	AL, AX, SHT, UVT
Tester	Y-360

**2. Content of change**

To remove bands.



Overall dimension in mm. **A** : 410×610×470, **B** : 367×484×352, **C** : 256×296×242

There is no change in product characteristics by specification change.

**3. Reason for change**

To improve eco-friendly packaging design.

**4. Time of change**

From production in July 2022.

Please bear in mind that the exact start of production may change due to stock condition.