

FA-Y-0013

### Notice of specification changes due to revision of UL standards for MELSEC iQ-R Series Energy Measuring Module

■Date of Issue

June 2026

■Relevant Models

MELSEC iQ-R Series Energy Measuring Module

Thank you for your continued support of Mitsubishi Electric programmable controllers, MELSEC iQ-R Series. We would like to inform you that due to the revision of UL standards for the MELSEC iQ-R Series Energy Measuring Module, which we use regularly, the Split-type current sensor used in combination will be changed as follows.

#### 1. Relevant models

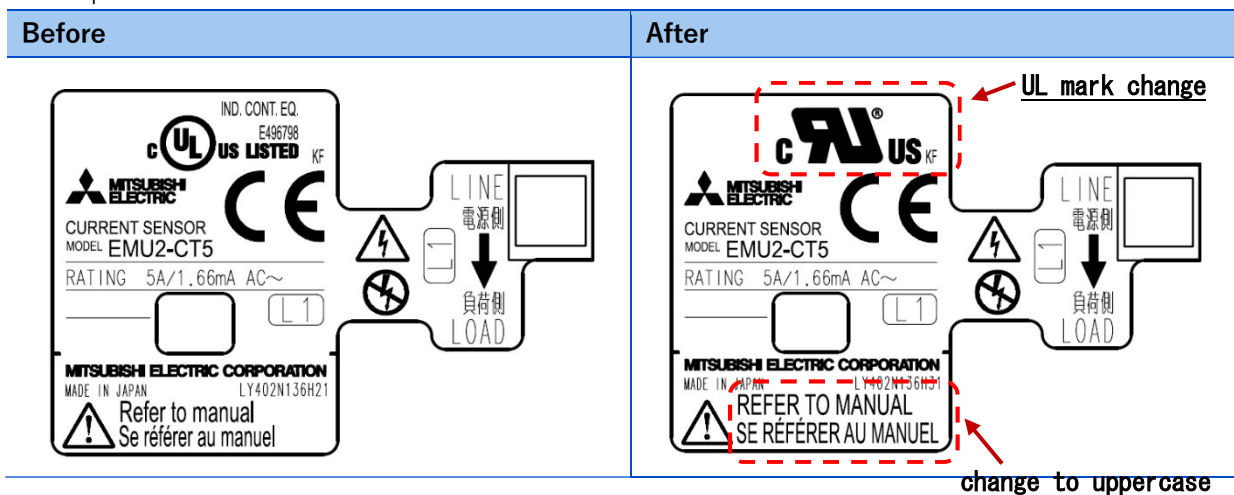
Product Name	Model Name
5A Split-type current sensor	EMU2-CT5
Split-type current sensor	EMU-CT50, EMU-CT100, EMU-CT250, EMU-CT400-A, EMU-CT600-A

There are no changes to the body of the MELSEC iQ-R Energy Measuring Module(RE81WH) used in combination with the above CT.

#### 2. Details of changes

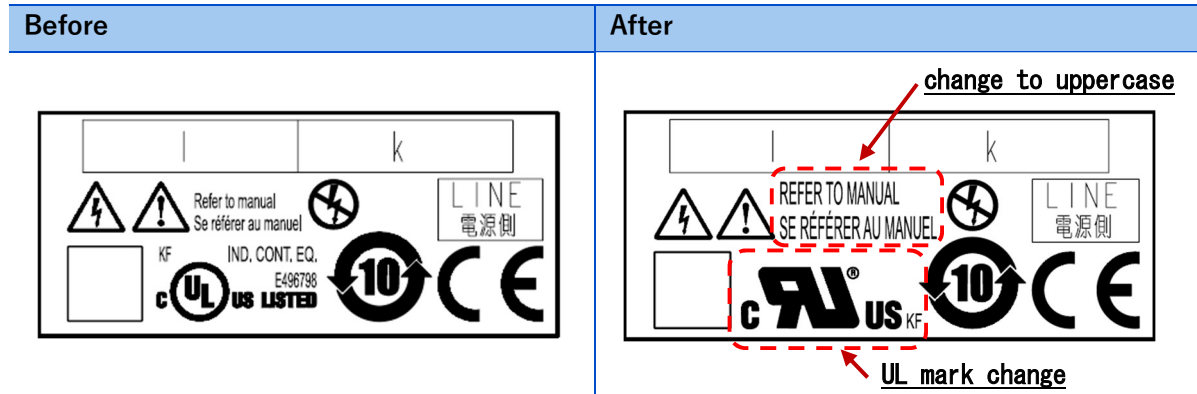
Due to the revision of UL standards, the labeling of Split-type current sensors will be changed. Please note that there are no changes to the product's general specifications, performance specifications, functions, external dimensions, etc. due to this change.

Example : Model EMU2-CT5

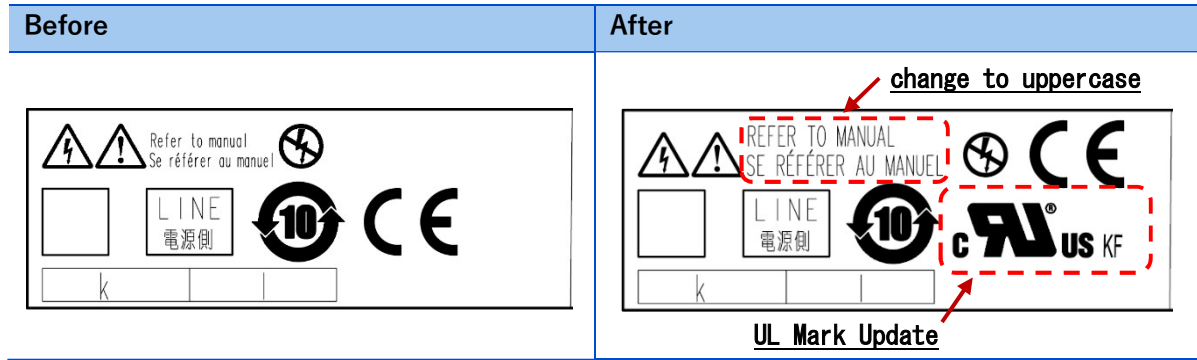


FA-Y-0013

Example : Model EMU-CT50



Example : Model EMU-CT400-A



### 3. Reason for change

Due to revision of UL standard.

### 4. Date of Change

From production in August 2026.

Please bear in mind that the exact start of production may change due to stock condition.

### 5. Impact of changes

Please note that systems combining pre-revised models (manufactured before August 2026) with revised models (manufactured in or after August 2026) are not compliant with UL standards. For further details, please contact your local distributor or representative.

### Revision

Sub-number	Publication Year/Month	Revision Content
-	June 2026	First Edition

### TRADEMARKS

The company names, system names, and product names mentioned in this technical bulletin are either registered trademarks or trademarks of their respective companies.

In some cases, trademark symbols such as '™' or '®' are not specified in this technical bulletin.