

TECHNICAL BULLETIN**[1 / 3]**

[Issue No.] GOT-A-0157

[Title] Incorrect Offset Operation of the Script Function in GT SoftGOT2000 Version1 and GT Simulator3 Version1 (GOT2000)

[Date of Issue] September 2020

[Relevant Models] GOT2000 Series

Thank you for your continued support of Mitsubishi Electric Graphic Operation Terminal (GOT).

It has come to our attention that there is a problem with the script function of GT SoftGOT2000 Version1 and GT Simulator3 Version1 (GOT2000), which is included in GT Designer3 Version1 (GOT2000). When a target external device for reading is specified with an offset using a temporary device area (TMP), specifying the offset may not work correctly.

The following shows the software version affected, the problem occurrence conditions and details, the assumed operation, the check method, and the corrective action. Please update the software of applicable product. We apologize for any inconvenience caused.

1. Software version affected

Product	Version
GT SoftGOT2000 Version1	1.235V to 1.240A
GT Simulator3 Version1 (GOT2000) (Software included in GT Designer3 Version1 (GOT2000))	1.235V to 1.240A

2. Problem occurrence conditions and details

When the script function is used (project scripts, screen scripts, and script parts)*1 and a target external device for reading is specified with an offset using a temporary device area (TMP), the offset specification fails and a value is read from the external device specified in the script.

*1 Object scripts are not applicable.

3. Operation example when the problem occurs

When the following script is executed to read the value of the external device D101 by specifying the external device D100 with an offset using a temporary device (TMP0 = 1), the offset specification fails and the value of D100 is read and stored in GD100.

```

//[Script]

[w:GD100]=[w:D100 [w:TMP0]];

    TMP0 = 1
    Reading a value in D101 by
    specifying D100 with an
    offset +1
    
```

Device	Before	After	
		Problematic operation	Intended operation
TMP0	1		
D100	10		
D101	20		
GD100	0	10	20

Problem:
 Specifying a target device for reading with an offset temporary device (TMP0) does not work correctly.

Description

The problem occurs only when an external device is specified for reading with an offset using a temporary device area (TMP). In the following cases, the operation works correctly.

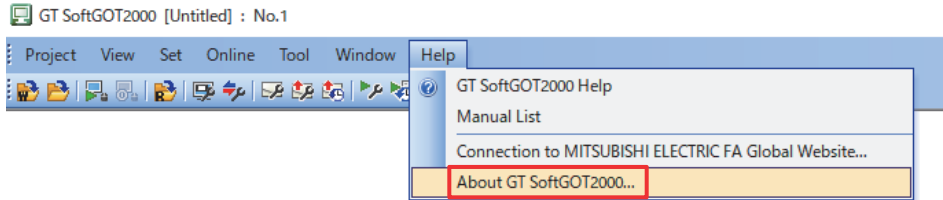
- An external device is specified for reading with an offset using an internal device.
 [w:GD100]=[w:D100[w:GD0]];
- An internal device is specified for reading with an offset using a temporary device area.
 [w:GD100]=[w:GD200[w:TMP0]];
- An external device is specified for writing with an offset using a temporary device area.
 [w:D200[w:TMP0]]=w:GD200];

[Issue No.] GOT-A-0157

4. Check method

4.1 GT SoftGOT2000 Version1

1) Select [Help] → [About GT SoftGOT2000].

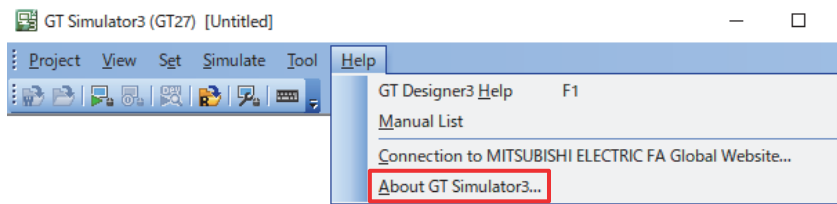


2) Check the version.



4.2 GT Simulator3 Version1 (GOT2000)

1) Select [Help] → [About GT Simulator3].



2) Check the version.



5. Corrective action

The problem has been corrected for products with the following software versions. Please update the software of applicable product.

Product	Fixed version
GT SoftGOT2000 Version1	1.241B or later
GT Simulator3 Version1 (GOT2000) (Software included in GT Designer3 Version1 (GOT2000))	1.241B or later

For details on the products with the applicable software versions, contact your local sales office.

REVISIONS

Version	Print Date	Revision
-	September 2020	- First edition