



**TECHNICAL BULLETIN**  
GOT-A-0249-A

[ 1 / 3 ]

## List of Devices Validated Using the GOT3000 Series Web Browser Function

■Date of Issue

July 2025

■Relevant Models

GOT3000 Series (GT37 Models)

Thank you for your continued support of Mitsubishi Electric Graphic Operation Terminal (GOT).

This technical bulletin describes devices that have the web server function and can be connected and operated using the GOT3000 series web browser function.

For information on how to enable connections and connectable functions using the web browser function, refer to the manual for each device.

### CONTENTS

1	List of validated devices for connection and operation . . . . .	2
1.1	PLC . . . . .	2
1.2	GOT . . . . .	2
1.3	Others . . . . .	2
2	Precautions . . . . .	2
2.1	Text display in the web browser function. . . . .	2
2.2	GOT Mobile function . . . . .	2
	Hard copy function . . . . .	2
2.3	Screen transition operations in the web server functions of the MELSEC iQ-R series and MELSEC iQ-F series . .	3
	Revisions . . . . .	3
	Intellectual property rights . . . . .	3

GOT-A-0249-A

## 1 List of validated devices for connection and operation

### 1.1 PLC

Manufacturer	Model	Remarks
Mitsubishi Electric Corporation	MELSEC iQ-R series	*1
	MELSEC iQ-F series	

\*1 After logging in, pressing the back button in the browser toolbar transitions to the login screen.

For details, refer to the following.

 Page 3 Screen transition operations in the web server functions of the MELSEC iQ-R series and MELSEC iQ-F series

### 1.2 GOT

Manufacturer	Model	Remarks
Mitsubishi Electric Corporation	GOT3000	GOT Mobile function
	GOT2000	
	GT SoftGOT3000	
	GT SoftGOT2000	

### 1.3 Others

Manufacturer	Model	Remarks
Mitsubishi Electric Corporation	Vision sensor VS80 series <sup>*1*2</sup>	—
	GENESIS64 <sup>*3</sup>	The operation is validated with Ver.10.96.

\*1 When the display magnification of the web browser is reduced, some icon images on the web page may appear misaligned.

\*2 Only one unit can be monitored.

\*3 Camera Control of GraphWorX64 is not supported.

## 2 Precautions

### 2.1 Text display in the web browser function

Depending on the language, the web page may not display correctly in the GOT web browser.

Install the font file corresponding to the language to be displayed on the GOT.

### 2.2 GOT Mobile function

#### Hard copy function

When the hard copy function is used on the GOT Mobile screen, image data does not open in a new tab. The current screen transitions to the URL that will display the image data.

The back button is disabled on the screen after the transition.

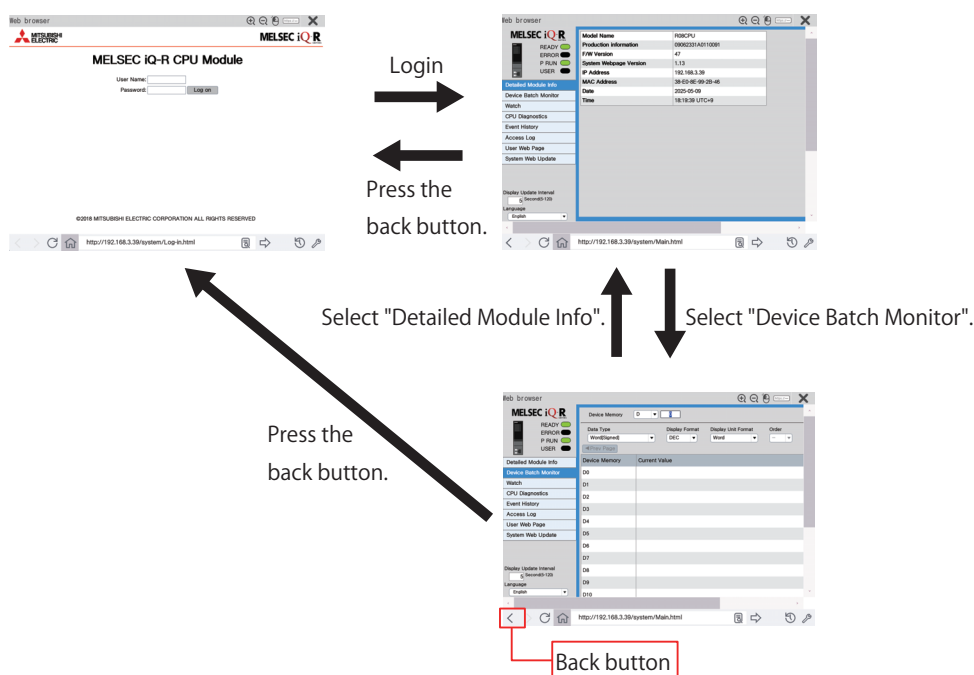
To return to the GOT Mobile screen after the transition, either enter the GOT Mobile server URL in the browser toolbar or use the browser history to transition to the GOT Mobile login screen.

## 2.3 Screen transition operations in the web server functions of the MELSEC iQ-R series and MELSEC iQ-F series

After logging in to the MELSEC iQ-R series or MELSEC iQ-F series web server function, pressing the back button in the browser toolbar transitions to the login screen.

To transition to the screen for each function, select the menu on the left side of the screen.

Example) Screen transitions



### Revisions

Version	Issue date	Revision
A	July 2025	• First edition

### Intellectual property rights

#### ■ Trademarks

The company names, system names and product names mentioned in this technical bulletin are either registered trademarks or trademarks of their respective companies.

The names may not be marked with a trademark symbol (™ or ®) in this document.