

TECHNICAL BULLETIN

[1 / 10]

FA-A-0306-B

Network cameras supporting the Camera recording package

■Date of Issue

April 2021

■Relevant Models

MELSEC iQ-R series, MELSEC iQ-F series, and MELSEC-Q series

Thank you for your continued support of Mitsubishi Electric programmable controllers.
This bulletin describes the network cameras supporting the camera recording package.
For the production state of the network cameras, contact each manufacturer.

1 NETWORK CAMERAS SUPPORTING THE CAMERA RECORDING PACKAGE

The following table lists the network cameras that satisfy the interface specifications of the modules manufactured by Mitsubishi Electric Corporation.

Before using the network cameras, confirm that it will not cause system operation problems.

In addition, follow the specifications of the network camera when using it.

Network cameras manufactured by AXIS COMMUNICATIONS

Before using the camera recording package, check that the firmware version of the network camera is 6.50.4.2 or later.

( Page 6 FIRMWARE VERSION)

Classification	Series	Model
Fixed box cameras	Q16	Q1659
		Q1647
		Q1647-LE
		Q1645
		Q1645-LE (Operation confirmed with the firmware version 9.70.1.5/8.40.3.2 (LTS).)* ²
		Q1615 MK II
		Q1615-E MK II
	P13	P1378
		P1378-LE
		P1377
		P1377-LE
		P1375
		P1375-E (Operation confirmed with the firmware version 9.70.1.5.)* ²
	M11	M1145-L
		M1137
		M1137-E
		M1135
		M1135-E (Operation confirmed with the firmware version 9.70.1.5.)* ²
		M1134
	M10	M1065-L (Operation confirmed with the firmware version 9.70.1.5/8.40.3.2 (LTS).)* ²
M1065-LW (Operation confirmed with the firmware version 9.80.1/8.40.3.2 (LTS).)* ²		
M1045-LW (Operation confirmed with the firmware version 9.70.1.5/8.40.3.2 (LTS).)* ²		
Fixed bullet cameras	Q17	Q1798-LE
		Q1786-LE
		Q1785-LE (Operation confirmed with the firmware version 9.70.1.5/8.40.3.2 (LTS).)* ²
		Q1700-LE
	P14	P1448-LE
		P1447-LE
		P1445-LE (Operation confirmed with the firmware version 9.80.1/8.40.3.2 (LTS).)* ²
		P1435-LE
	M20	M2026-LE MK II
		M2025-LE

FA-A-0306-B

Classification	Series	Model
Fixed dome cameras	Q36	Q3617-VE
		Q3615-VE
	Q35	Q3527-LVE
		Q3518-LVE
		Q3517-LV
		Q3517-LVE
		Q3517-SLVE
		Q3515-LV
		Q3515-LVE (Operation confirmed with the firmware version 9.70.1.5/8.40.3.2 (LTS).)* ²
	P33	P3375-LV
		P3375-LVE
		P3375-V
		P3375-VE
		P3374-V
		P3374-LV
		P3367-V
		P3367-VE
	P32	P3245-LV
		P3245-LVE (Operation confirmed with the firmware version 9.70.1.5.)* ²
		P3245-V
		P3245-VE
		P3228-LV
		P3228-LVE
		P3227-LV
	P3227-LVE	
	M42	M4206-V
		M4206-LV
	M32	M3206-LVE
		M3205-LVE (Operation confirmed with the firmware version 9.70.1.5.)* ²
	M31-L	M3106-L MK II
		M3106-LVE MK II
		M3105-L
		M3105-LVE
M3104-L		
M3104-LVE		
M30	M3046-V	
	M3045-V	
	M3045-WV	
	M3044-V	
	M3044-WV	
	M3016	
	M3015	

FA-A-0306-B

Classification	Series	Model
Pan/tilt/zoom (PTZ) cameras* ¹	Q62	Q6215-LE
	Q61	Q6155-E (Operation confirmed with the firmware version 8.40.3.3.) ^{*2}
		Q6154-E
		Q6128-E
		Q6125-LE
	Q60	Q6075
		Q6075-E
		Q6074
		Q6074-E
		Q6055-C
	P56	P5655-E (Operation confirmed with the firmware version 9.80.1.) ^{*2}
	P54	P5415-E
		P5414-E
	M55	M5525-E (Operation confirmed with the firmware version 8.40.3.2.) ^{*2}
	M50	M5065
		M5054 (Operation confirmed with the firmware version 6.53.4.) ^{*2}
	V59	V5915
		V5914
	Q86	Q8685-E
		Q8685-LE
		Q8642-E
		Q8641-E
	Q87	Q8742-E
Q8742-LE		
Q8741-E		
Q8741-LE		
Panoramic cameras	Q60	Q6000-E MK II
	Q37	Q3708-PVE
	P38	P3807-PVE
	P37	P3719-PLE
		P3717-PLE
	M30	M3058-PLVE (Operation confirmed with the firmware version 9.70.1.5/8.40.3.2 (LTS).) ^{*2}
		M3057-PLVE
M3048-P		
M3047-P		
M3037-PVE		
Modular cameras	FA	FA54 (Operation confirmed with the firmware version 9.70.1.5/8.40.3.2 (LTS).) ^{*2}
	F	F44 (Operation confirmed with the firmware version 6.50.5.1 (LTS).) ^{*2}
		F41 (Operation confirmed with the firmware version 6.50.5.1 (LTS).) ^{*2}
		F34
	P12	P1275 (Operation confirmed with the firmware version 9.70.1.5/8.40.3.2 (LTS).) ^{*2}
		P1265 (Operation confirmed with the firmware version 9.70.1.5/8.40.3.2 (LTS).) ^{*2}
		P1245 (Operation confirmed with the firmware version 9.70.1.5/8.40.3.2 (LTS).) ^{*2}
		P1264
		P1254
	P1244	

FA-A-0306-B

Classification	Series	Model
Thermal cameras	Q19	Q1942-E
		Q1942-E PT
		Q1941-E
		Q1941-E PT
	P12	P1290-E
		P1280-E (Operation confirmed with the firmware version 9.80.1/8.40.3.2 (LTS).)* ²

*1 Pan, tilt, and zoom operations are not available with the camera recording package.

*2 The operation has confirmed with the MELSEC iQ-R series CPU module.

2 FIRMWARE VERSION

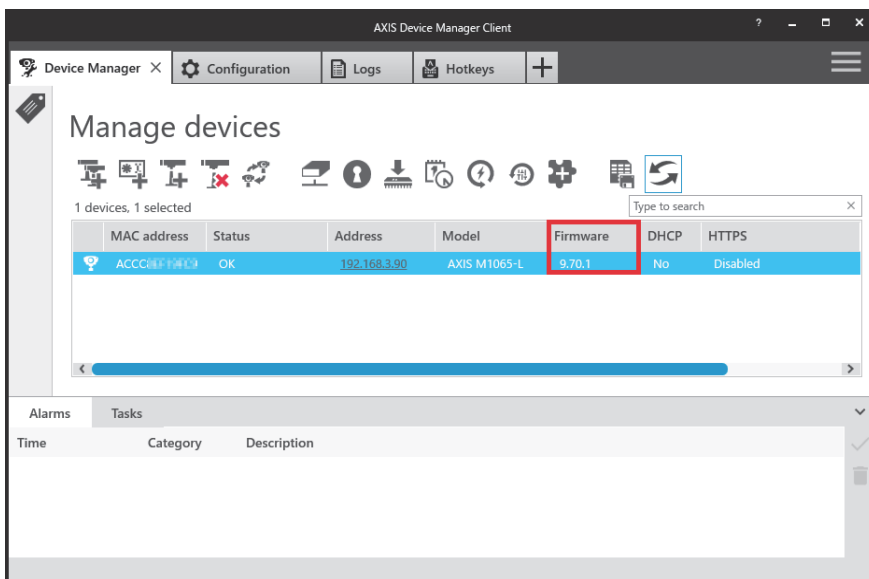
2.1 Checking the Firmware Version

Checking the version using the dedicated tool

Use AXIS Device Manager to check the firmware version.

Download AXIS Device Manager from the Web site of AXIS COMMUNICATIONS.

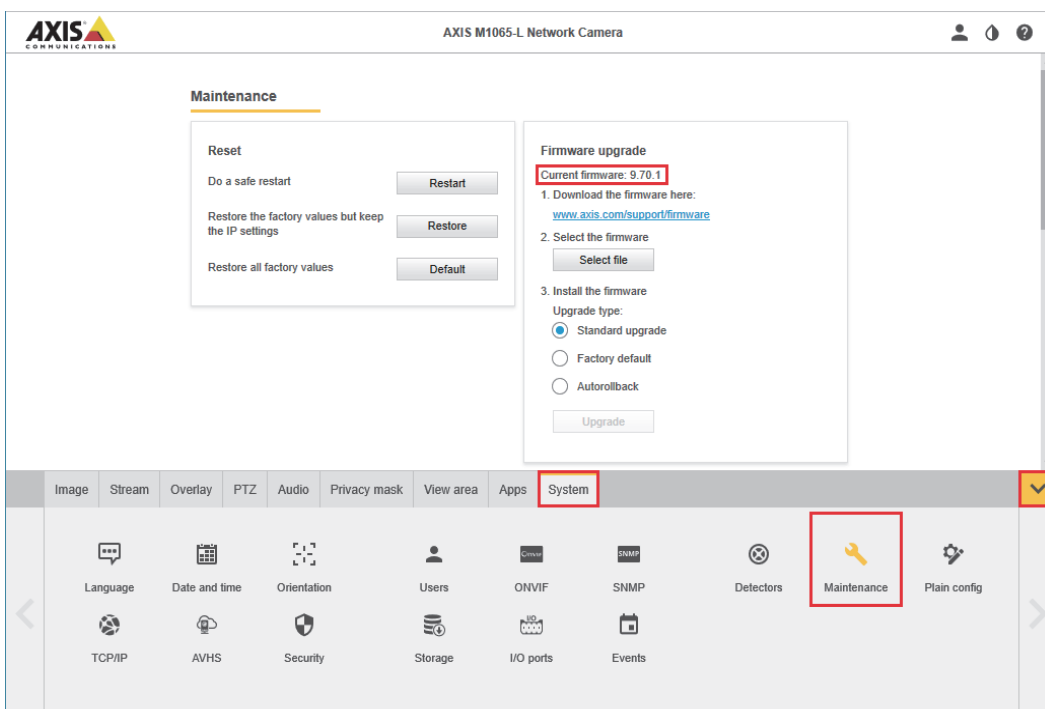
www.axis.com/en



Checking the version via the Web browser

Access the camera via the Web browser.

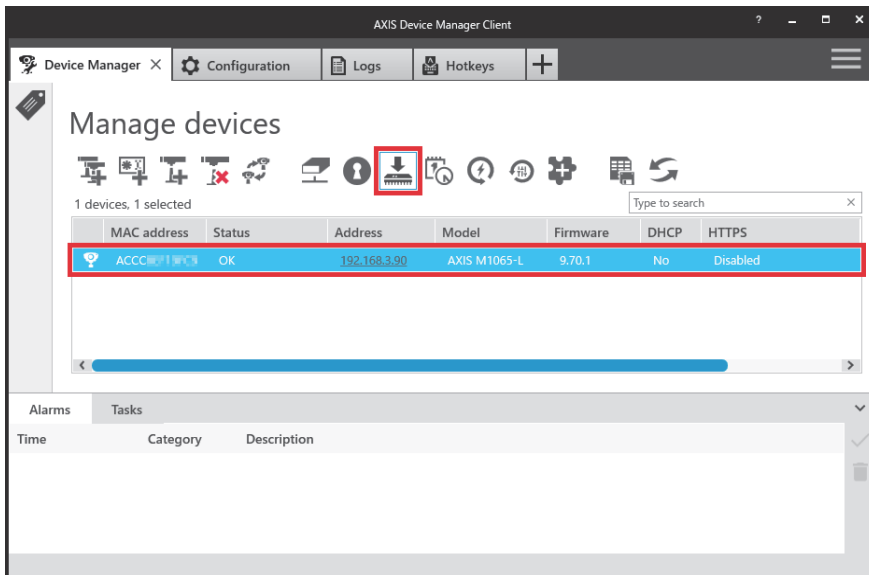
[Setting] ⇒ [System] ⇒ [Maintenance]



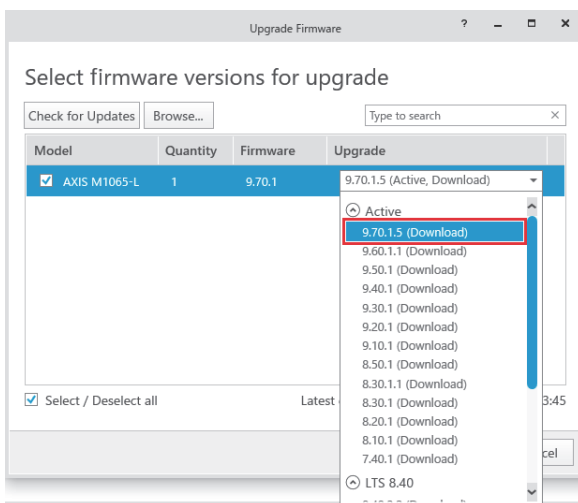
2.2 Upgrading the Firmware Version

Upgrading the version using the dedicated tool

1. Select the camera to be upgraded in AXIS Device Manager and open the window for upgrading.



2. Select the version to be upgraded.



3. Download the firmware file and upgrade the version using the tool.

Upgrading the version via the Web browser

1. Download the file for the firmware to be upgraded from the Web site of AXIS COMMUNICATIONS to a personal computer.

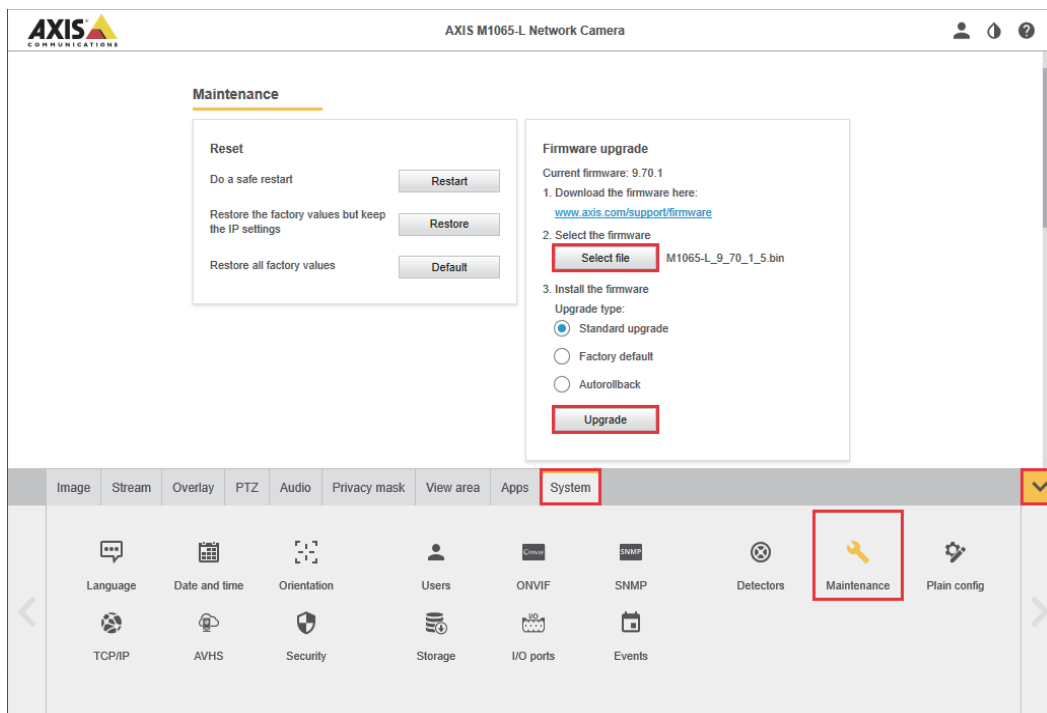
www.axis.com/en

Firmware

Download version 8.40.3.2	LTS 8.40		▼
Download version 9.70.1.5	ACTIVE		▼

2. Access the camera via the Web browser, select the downloaded file, and upgrade the version.

[Setting] ⇒ [System] ⇒ [Maintenance]



3 PRECAUTIONS

The specifications of network cameras are subject to change without notice.

For the installation and removal of the network camera and the wiring precautions, refer to the manuals of the network camera to be used.

Before using the network camera, read "Safety Precautions" in the user's manual for Mitsubishi Electric programmable controllers.

FA-A-0306-B

REVISIONS

Version	Date of Issue	Revision
A	June 2020	First edition
B	April 2021	Addition of relevant models

TRADEMARKS

AXIS and AXIS COMMUNICATIONS are registered trademarks or trademarks of AXIS AB in various jurisdictions.

The company names, system names and product names mentioned in this technical bulletin are either registered trademarks or trademarks of their respective companies.

In some cases, trademark symbols such as '™' or '®' are not specified in this technical bulletin.