

Products Confirmed to Operate on Windows 11, and Considerations for Installation

■Date of Issue

August 2025

■Relevant Models

MELSOFT series

Thank you for your continued support of Mitsubishi Electric FA engineering software MELSOFT series.

This technical bulletin shows the considerations when installing a product that can be installed on a Windows® 11-based personal computer.

1 CONFIRMED PRODUCTS

When installing a product on a Windows 11-based personal computer, use a product confirmed to operate on Windows 11.

The operation on Windows 11 is confirmed for each product with the versions listed in the following table or later.

Check that 'Windows 11' is described in 'Operating environment' in the manual before use.

—: None

Product name	Version	DATE*1		Manual No.	Updated version of software
		Japanese	English		
MELSOFT iQ Works	2.94Y	2305CY	2305CY	BCN-P5999-0392	Available
GX Works3	1.085P	2204AP	2204AP	BCN-P5999-0391	
GX Works2	1.615R	2209AR	2209AR	BCN-P5999-0944	
GT Works3	1.275M	2204AM	2204AM	BCN-P5999-0066 BCN-P5999-1793	
MT Works2	1.175H	2205AGH	2205AGH	BCN-B62008-364	
RT ToolBox3/mini/ Pro	2.10L	—	—	BFP-A3495	
RT VisualBox	1.00A	—	—	BFP-A3696	
iQ AppPortal	1.29F	—	—	BCN-P5999-0635	Not available*2
Motorizer	1.035M	—	—	—	Available*2
FR Configurator2	1.31H	—	—	IB-0600522ENG	
CW Configurator	1.016S	2303BS	2303BS	BCN-P5999-0286	
MR Configurator2	1.130L	—	—	BKO-CB0804H02	
MX Component	5.003D	2210AD	2210AD	BCN-P5999-1388	
MX Sheet	3.004E	2210AE	2210AE	BCN-P5999-1389	
MX MESInterface-R	1.19V	202312AV	202312AV	SH-081422ENG	
MX OPC UA Module Configurator-R	1.11M	2405AM	2405AM	SH-081693ENG	
GX VideoViewer	1.024A	—	—	BCN-P5999-1374	Not available*2
GX VideoViewer Pro	1.024A	—	—	BCN-P5999-1553	Available*2

FA-A-0464-A

Product name		Version	DATE*1		Manual No.	Updated version of software
			Japanese	English		
GX LogViewer		1.130L	—	—	BCN-P5999-0506	Not available*2
CPU Module Logging Configuration Tool		1.130L	—	—		
High Speed Data Communication Module Tool		1.02C	—	—	SH-081162ENG	
High Speed Data Logger Module Tool		1.16S	—	—	SH-080818ENG	
MELSEC iQ-R High Speed Data Communication Module Tool		1.01B	—	—	SH-082360ENG	
MELSEC iQ-R series High Speed Data Logger Module Tool		1.09K	—	—	SH-081561ENG	
QnH→QnU Conversion Support Tool		1.04	—	—	—	Available*2
Setting/Monitoring Tools for the C Controller Module (SW4PVC-CCPU)		4.14Q	2401BQ	2401BQ	BCN-P5999-0020	
Setting/Monitoring Tools for the C Controller Module (SW3PVC-CCPU)		3.15R	2401BR	2401BR	SH-080767ENG	
Engineering tool for the MELSEC Q series C Controller module	CW Workbench	G	—	2402CG	SH-080982ENG	Not available
	CW-Sim	E	—	2402AE	SH-081159ENG	
VxWorks simulator for the MELSEC Q series C Controller module	CW-Sim Standalone	D	—	2402AD		
Engineering tool for the MELSEC iQ-R series C Controller module	CW Workbench	J	—	2402BJ	SH-081373ENG	
VxWorks simulator for the MELSEC iQ-R series C Controller module	CW-Sim	I	—	2402BJ		
VxWorks simulator for the MELSEC iQ-R series C Controller module	CW-Sim Standalone	D	—	2402AD		
Engineering tool for MI5122-VW	CW Workbench 4	B	—	2402BB	SH-081940ENG	
PX Developer		1.56J	2204BJ	2204BJ	SH-080369E	Available*2
PX Developer Monitor Tool		1.56J	2204BJ	2204BJ	SH-080370E	
GX Developer		8.508E	2211BE	2211BE	SH-080372E	Not available*2
A/QnA→iQ-R Conversion Support Tool		1.01B	—	—	BCN-P5999-1284	
GX Configurator-DP		7.16S	—	2306BS	BCN-P5462	Not available
Software package for network interface boards	SW1DNN-CCIETBDM-B	1.000A	—	—	SH-082614ENG	Available*2
	SW1DNC-MNETG-B	1.32J	—	—	SH-080691ENG*3 SH-082712ENG*4	
	SW1DNC-CCIEF-B	1.19V	—	—	SH-080980ENG	
	SW0DNC-MNETH-B	37P	—	—	SH-080128	
	SW1DNC-CCBD2-B	1.26C	—	—	SH-080527ENG	
CC-Link IE TSN Communication Software Windows version		1.002C	—	—	BCN-P5999-1267	

*1 Printed on the surface of the CD or DVD. The first four digits and the subsequent number indicates the manufactured date and the version, respectively.

For MX MESInterface and MX MESInterface-R, the first six digits and the subsequent number indicates the manufactured date and the version, respectively.

*2 Please contact your local Mitsubishi representative.

*3 Network interface boards corresponding to this manual are as follows:

Q80BD-J71GP21-SX, Q80BD-J71GP21S-SX, Q81BD-J71GP21-SX, Q81BD-J71GP21S-SX

*4 Network interface boards corresponding to this manual are as follows:

NZ81GP21-SX (with a serial number whose first four digits are '2704' or later), NZ81GP21S-SX

2 CONSIDERATIONS FOR INSTALLATION

This chapter explains the considerations for installation.

2.1 Enabling .NET Framework

.NET Framework with version compatible with a product may be required.

The versions of .NET Framework compatible with each product are as follows:

Product name	Version of .NET Framework
MELSOFT iQ Works, GX Works3, MT Works2, MX Component Version5, MX Sheet Version3, CW Configurator, GX LogViewer, CPU Module Logging Configuration Tool	.NET Framework 4.8 .NET Framework 3.5 (includes .NET 2.0 and 3.0)* ¹
GX Works2, GT Works3, FR Configurator2, MR Configurator2, Setting/Monitoring Tools for the C Controller Module	.NET Framework 3.5 (includes .NET 2.0 and 3.0)

*¹ Not required to be enabled for MX Sheet Version3.

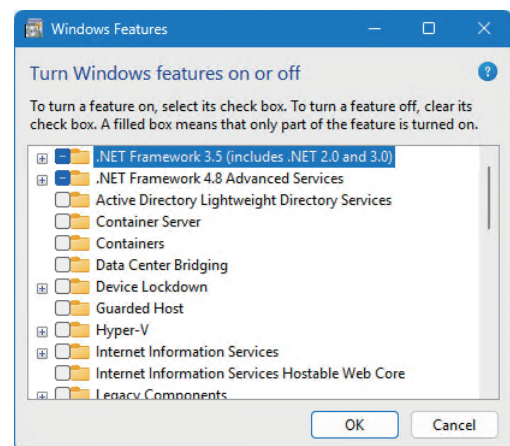
For other products, refer to manuals for the products and check the considerations.

When .NET Framework with version compatible with the product is not installed, or if it is disabled in the setting and installation fails, enable .NET Framework by the following method.

Method of enabling .NET Framework

Enable .NET Framework by the following procedure:

1. Search for "Turn Windows features on or off" in the control panel.
2. Select the following functions to enable them in the "Windows Features" screen.
 - ".NET Framework 3.5 (includes .NET 2.0 and 3.0)"
 - ".NET Framework 4.8 Advanced Services"



Method of installing .NET Framework

Download .NET Framework and install it.

If the personal computer is not connected to the Internet, install it by referring to the following:

■ Method of installing .NET Framework on the personal computer with no Internet connection

Use a Windows installation media or an offline installer provided by Microsoft.

The following shows the procedure for installing .NET Framework 3.5 by using the installation media.

1. Insert a Windows 11 installation media into the DVD drive.
2. Execute the following command using the command prompt of Windows.
(Specify the drive of the installation media for "x:.")

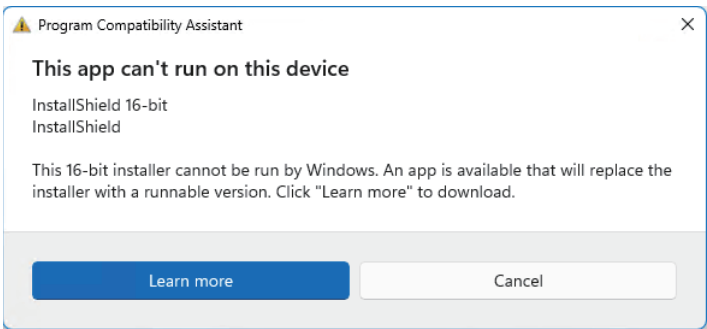
```
Dism /online /enable-feature /featurename:NetFx3 /All /Source:x:\sources\sxs /LimitAccess
```

2.2 Replacing a 16-bit installer

For some products, the support package to replace a 16-bit installer is required.
Install the support package by the following method, and then install the product.

Method of installing the support package for a 16-bit installer

If the following message appears when installing a product, installation of the support package is required.



1. Click the [Learn more] button of the message.
A related Microsoft website is displayed.
2. Download the 16-bit InstallShield® support package and install it.

2.3 Starting Installation

For some products, the installation may not start due to other applications also running.
Install the product by referring to the following:

📖 Corrective Action When Installation Does Not Start for Some MELSOFT Products (FA-A-0452)

REVISIONS

Version	Date of issue	Revision
A	August 2025	First edition

TRADEMARKS

Microsoft and Windows are trademarks of the Microsoft group of companies.
InstallShield is either a registered trademark or a trademark of Flexera Software, LLC.
The company names, system names and product names mentioned in this bulletin are either registered trademarks or trademarks of their respective companies.
In some cases, trademark symbols such as "™" or "®" are not specified in this bulletin.