

Flat Cable Handling Technology

Reference
Exhibition

» Features

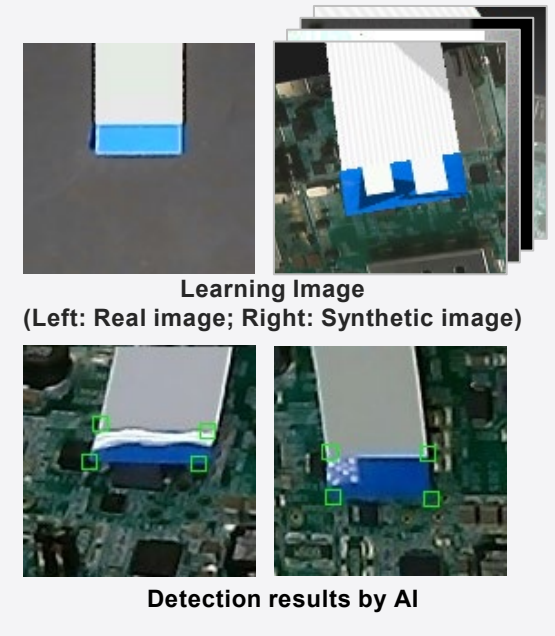
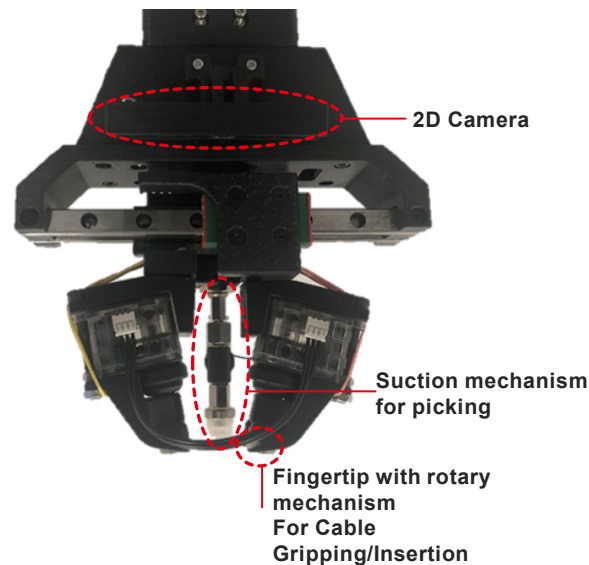
» Nothing

Reduced work time by developing a dedicated hand that performs from picking to insertion without changing hands.

AI is used when picking position is detected to improve robustness against the influence of light sources such as reflection.

Efficient learning data creation by combining one real image and synthetic image.

Flat Cable Dedicated Hand



Flat Cable Handling Technology

Reference
Exhibition

» Features

» VIDEOS

Reduced work time by developing a dedicated hand that performs from picking to insertion without changing hands.

AI is used when picking position is detected to improve robustness against the influence of light sources such as reflection.

Efficient learning data creation by combining one real image and synthetic image.



A Locally-Adaptive, Parallel-Jaw Gripper with Clamping and Rolling Capable, Soft Fingertips for Fine Manipulation of Flexible Flat Cables

Jayden Chapman¹, Gal Gorjup¹, Anany Dwivedi¹, Saori Matsunaga³, Toshisada Mariyama³,
Bruce MacDonald², and Minas Liarokapis¹

¹Department of Mechanical Engineering, University of Auckland, New Zealand

²Centre for Automation and Robotic Engineering Science, Department of Electrical, Computer and Software Engineering,
The University of Auckland, New Zealand

³Information Technology R&D Center, Mitsubishi Electric Corporation, Japan

三菱電機株式会社

© Mitsubishi Electric Corporation

