

# **Printer Driver Instruction Manual**

**~ For Windows Vista ~**

***CP3800DW***

●**Safety precautions**

Please read the User's Manual for the printer carefully before use, and follows the instructions. Note that the contents of directions for use and safety precautions correspond to the safety standards as of the time the User's Manual has been created.

●**Remodeling**

For product safety, do not remodel the CP3800DW printers or the contents of the CP3800DW printer drivers and the CD.

●**Copyright**

Copyrights, trademarks or any other intellectual property rights whatsoever that pertain to documents, programs or other items provided with this product, are owned and/or assigned to the Mitsubishi Electric Corporation, or the respective other holders of rights. Except in cases permitted by applicable laws, these may not be duplicated or used without consent from the Mitsubishi Electric Corporation or the respective other holders of rights.

Microsoft and Windows are registered trademarks of Microsoft Corporation valid in the USA and other countries.  
LEADTOOLS Copyright (C) 2008 LEAD Technologies, Inc.

# Contents

---

<b>Chapter 1 Install</b>	<b>1</b>
1.1 Printer and Host computer Connection	1
1.2 Found New Hardware Wizard	1
1.3 Install from Add Printer Wizard	6
<b>Chapter 2 Properties</b>	<b>12</b>
2.1 Opening Printer Properties	12
2.2 Explanation of Print Setting Functions	13
2.2.1 Layout	13
2.2.2 Advanced Options	14
2.2.3 Paper/Quality	19
2.2.4 Option	19
2.2.5 Color Adjustment	20
2.3 Default Values for Various Settings	21
2.4 Color Management	21
2.5 Print Area	22
<b>Chapter 3 Updating the Driver</b>	<b>24</b>
1 Driver Removal	24
2 Installing the printer-driver upgrade	28
3 Rebooting the computer	28
<b>Chapter 4 Driver Removal</b>	<b>29</b>

# Chapter 1 Install

## 1.1 Printer and Host computer Connection

Connect the CP3800DW printer and the host by USB cable and power ON the CP3800DW.

\* Please refer to the manual for the CP3800DW printer for connection if needed.

Note) Do not insert the accompanying CD at this time.

Please login with administrator rights to install the driver. The following explanations are given on the assumption of use with administrator rights.

After that, if [Found New Hardware Wizard] is initiated, please install using the procedure in [1.2 Found New Hardware Wizard].

If [Found New Hardware Wizard] is not initiated, please install in accordance with [1.3 Install from Add Printer Wizard].

## 1.2 Found New Hardware Wizard

When “Found New Hardware Wizard” starts running, click on “Locate and install driver software (recommended)”.

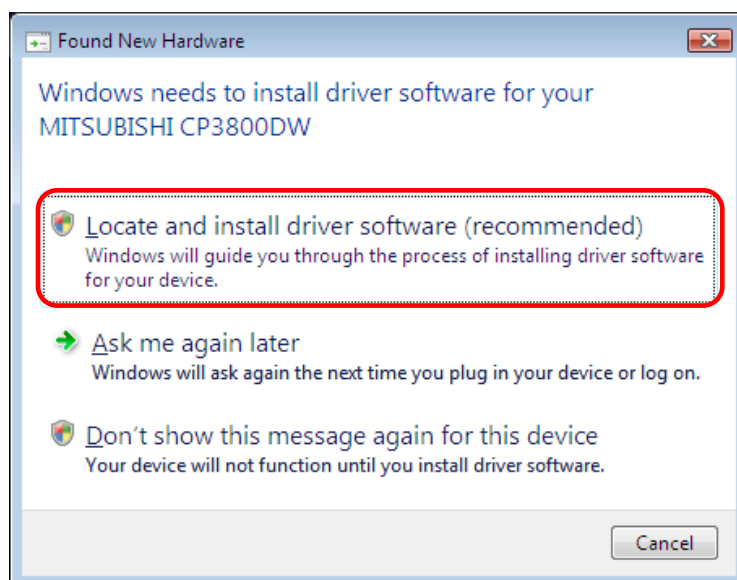


Fig 1.2.1 Found New Hardware Wizard

Note) For User Account Control, confirmation of “Windows needs your permission to continue” will be requested. Click on the “Continue” button. Please wait a little until the next screen is displayed.

If the message “Insert the disc that came with your MITSUBISHI CP3800DW” appears, click on “I don’t have the disc. Show me other options”.

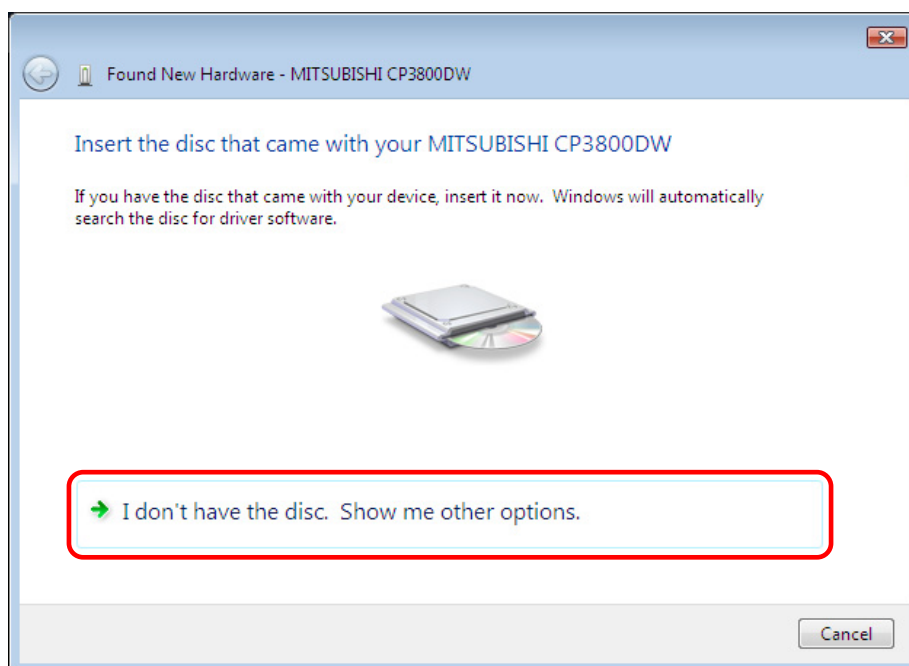


Fig 1.2.2 Insert the disc

If the message “Windows couldn’t find driver software for your device” appears, click on “Browse my computer for driver software (advanced)”.

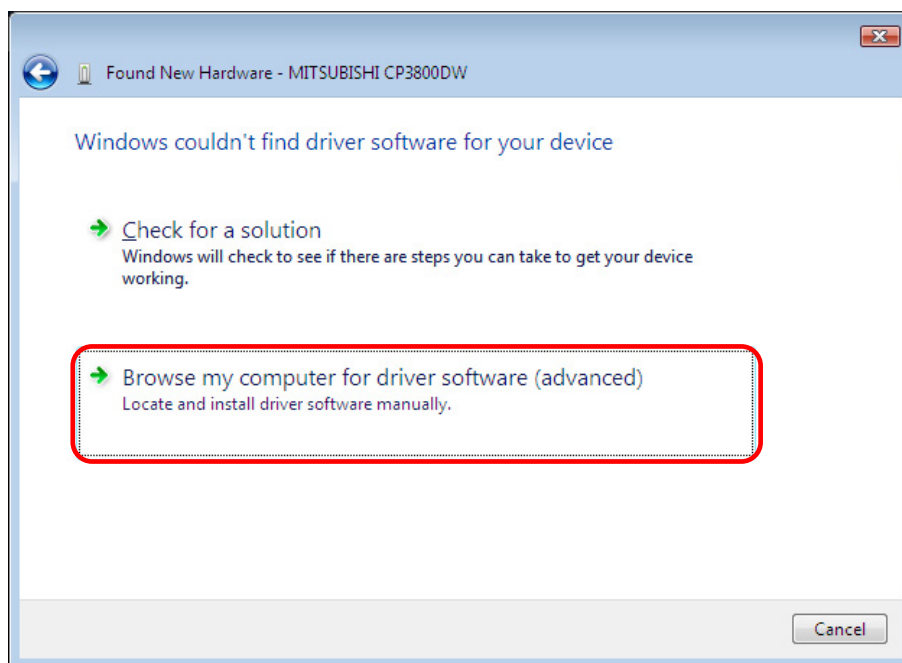


Fig 1.2.3 Windows couldn’t find driver software for your device

Insert the accompanying CD here.

If the message “Browse for driver software on your computer” appears, click on the “Browse” button, designate the location of the Installation Disk, and click on the “Next” button.

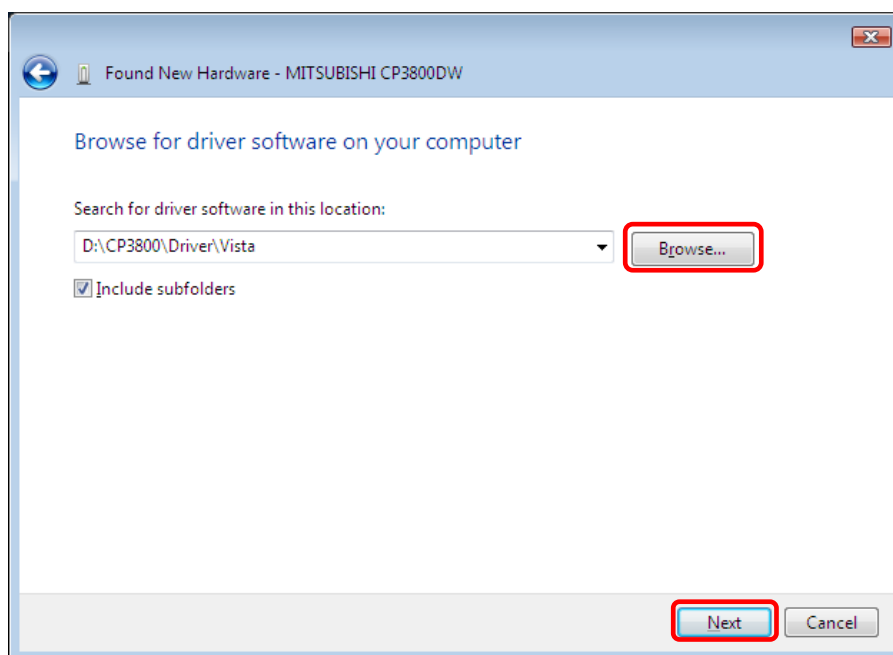


Fig 1.2.4 Designating the driver software location

If the Windows Security confirmation window appears, click on “Install this driver software anyway”.

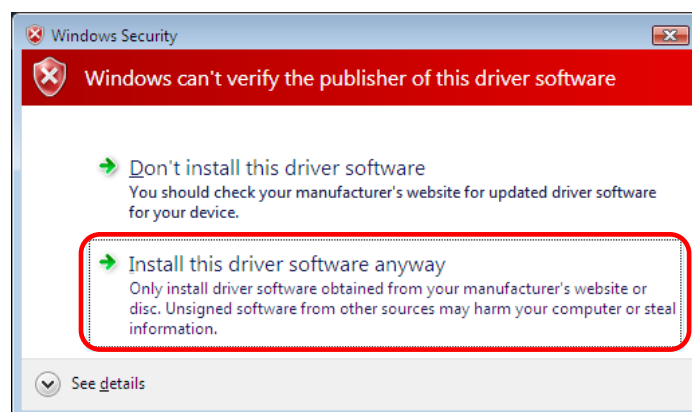


Fig 1.2.5 Windows Security confirmation

The driver software will be installed.

When “The software for this device has been successfully installed” appears, click on the “Close” button, and end the wizard.

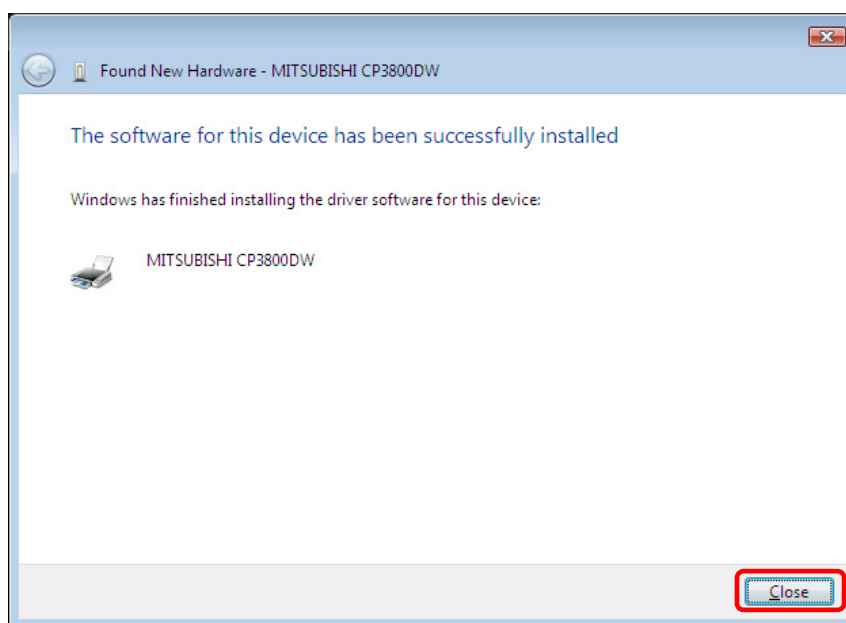


Fig 1.2.6 Installation Complete window

Select “Start”, then “Control Panel”, and open the control panel. Click on “Printer” in the control panel.

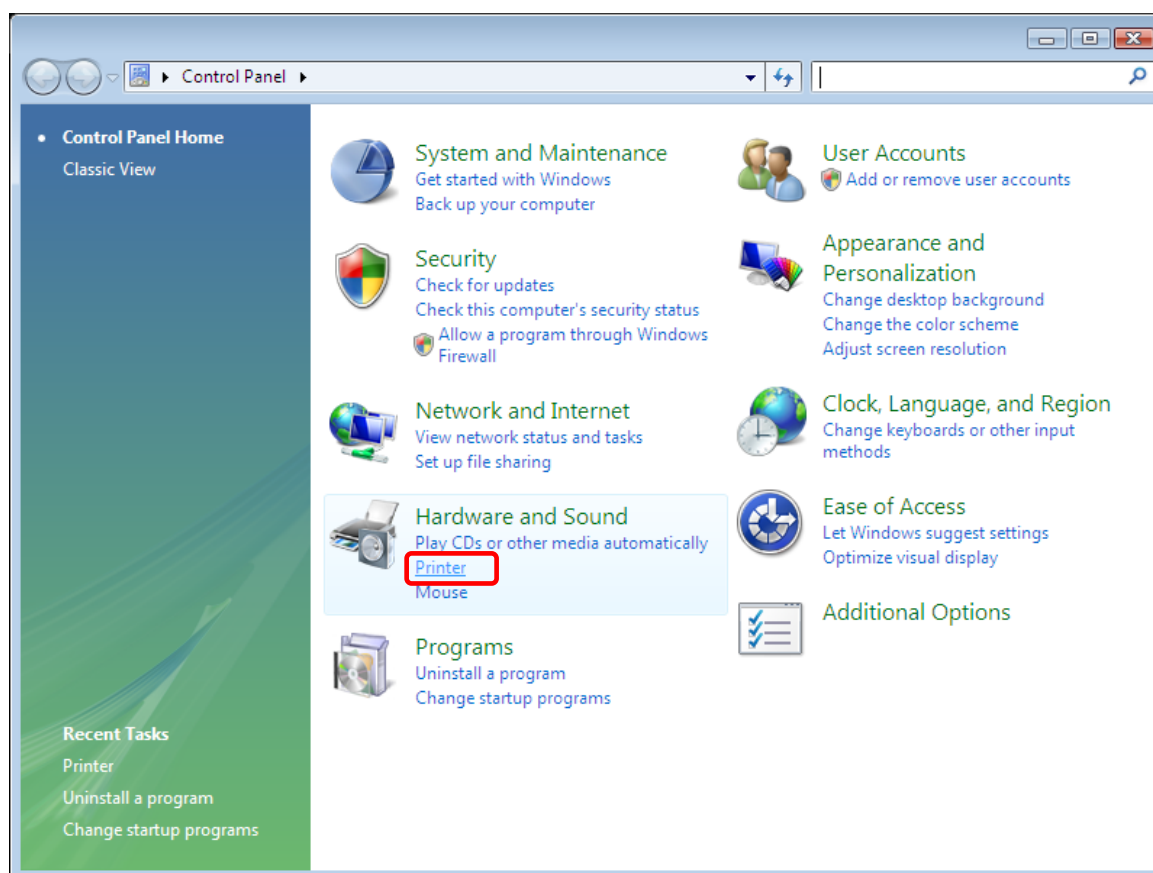


Fig 1.2.7 Control panel

Open [Printer] and confirm that [MITSUBISHI CP3800DW] is shown.  
Now installation is complete.

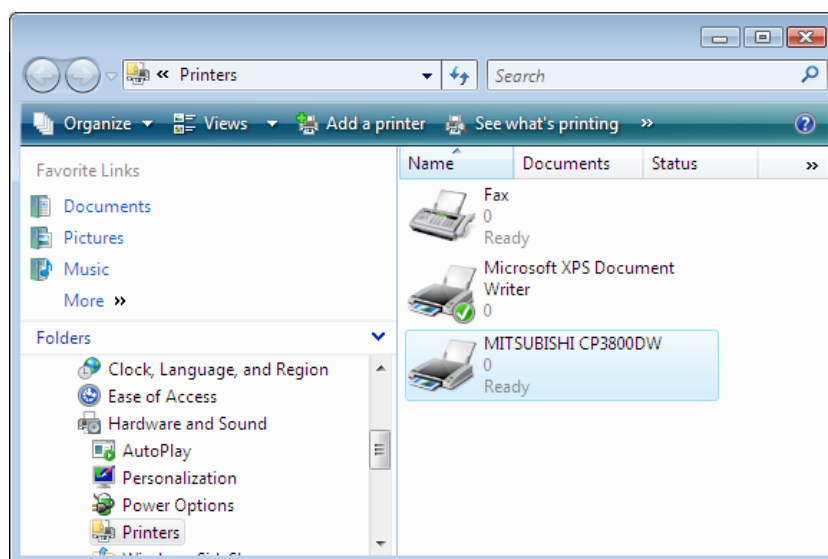


Fig 1.2.8 Printers

After installation of the printer-driver is complete, be sure to reboot the computer.



## 1.3 Install from Add Printer Wizard

Select “Start”, then “Control Panel”, and open the control panel. Click on “Printer” in the control panel.

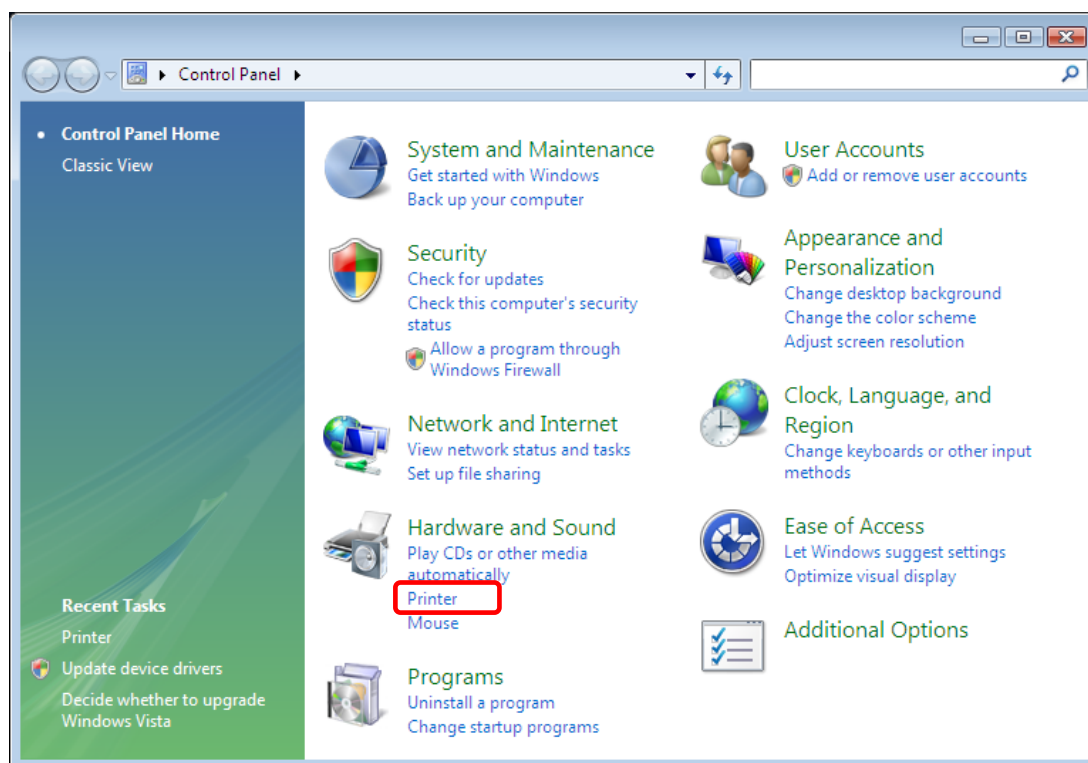


Fig 1.3.1 Control Panel

Click on “Add a Printer” in the menu bar at the top of the “Printer” window.

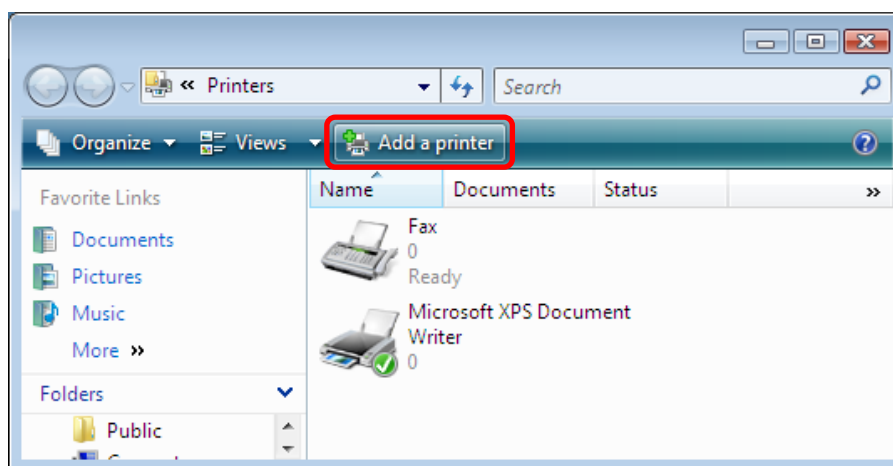


Fig 1.3.2 Printer window

When the “Choose a local or network printer” window appears, click on “Add a local printer”.

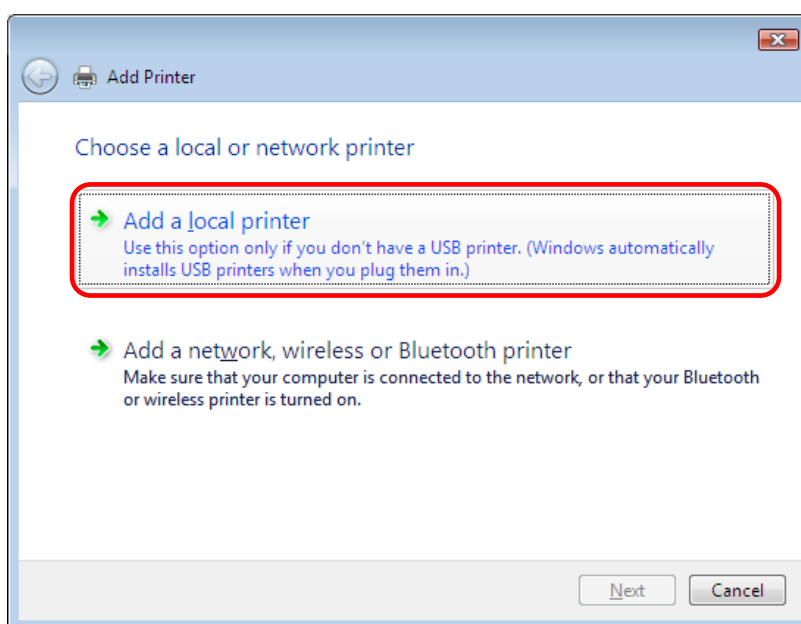


Fig 1.3.3 Choose a local or network printer window

When the “Choose a printer port” window appears, select “Use an existing port:”, and select the USB port the printer is connected to (for example, “USB001”) from the drop-down list, and click the “Next” button.

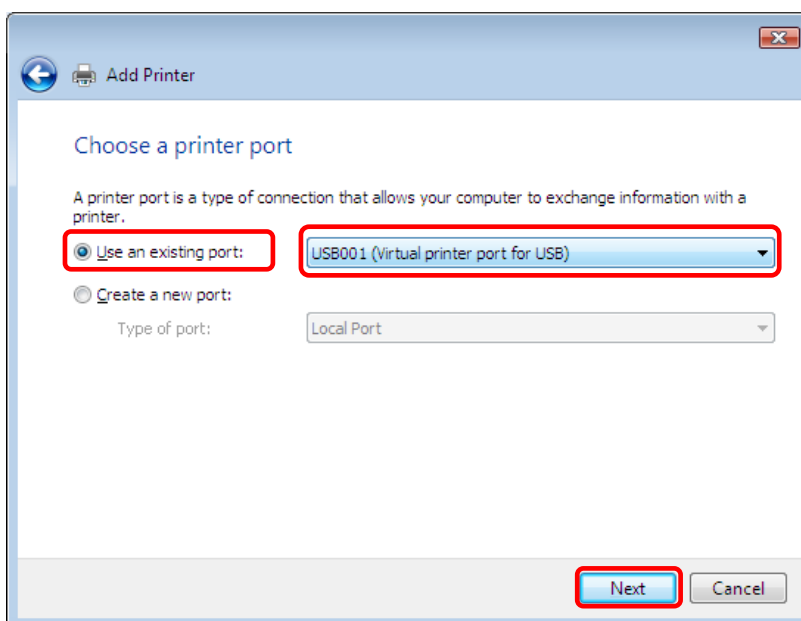


Fig 1.3.4 Choose a printer port window

When the “Install the printer driver” window appears, click on the “Have Disk...” button.

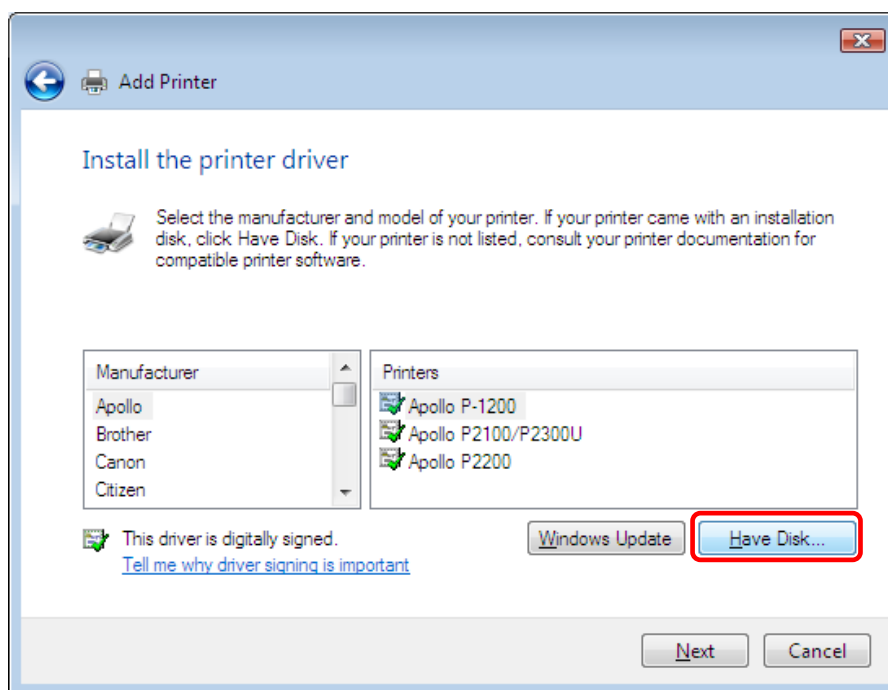


Fig 1.3.5 Install the printer driver window

When the “Install From Disk” window appears, use “Browse...” to designate the installation disk location, and click the “OK” button.

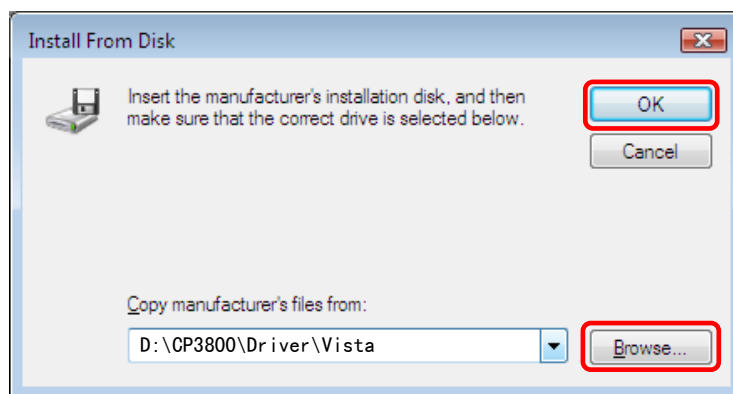


Fig 1.3.6 Install From Disk window

In the “Install the printer driver” window, check that “MITSUBISHI CP3800DW” is displayed, and click the “Next” button.

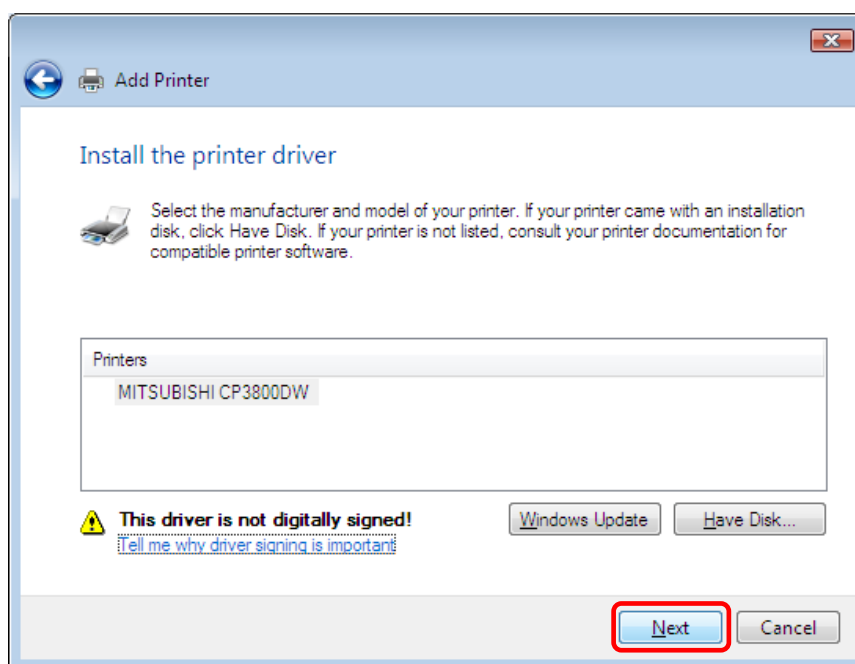


Fig 1.3.7 CP3800DW Install the printer driver window

When the “Type a printer name” window appears, you can set the printer name. Also, to set it as the printer usually used, select the check box for “Set as the default printer”, and click the “Next” button.

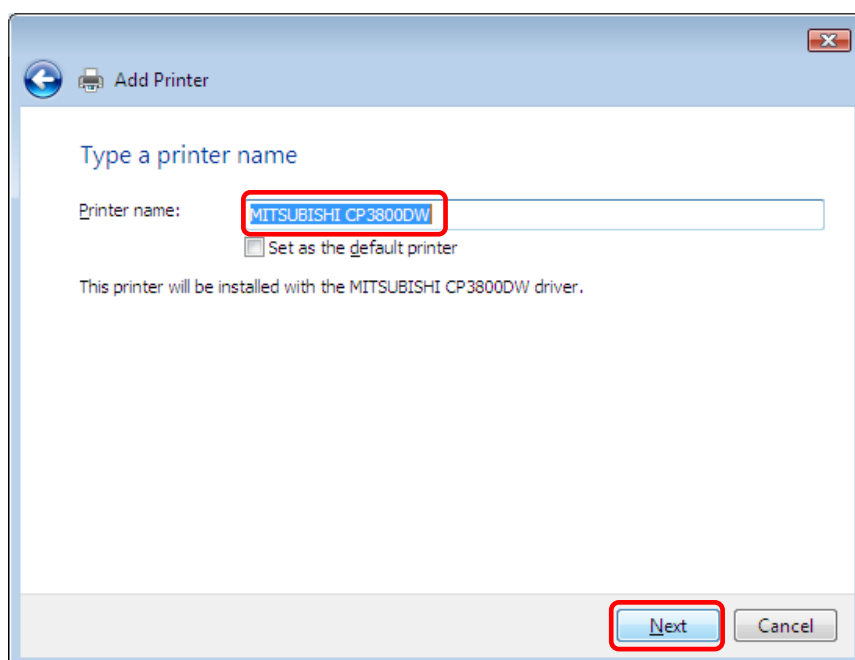


Fig 1.3.8 Type a printer name window

Note) Installation will begin, but the User Account Control will request confirmation with the message “Install this driver software anyway”. Click on “Continue”.

When the Windows Security window appears, click on “Install this driver software anyway”.

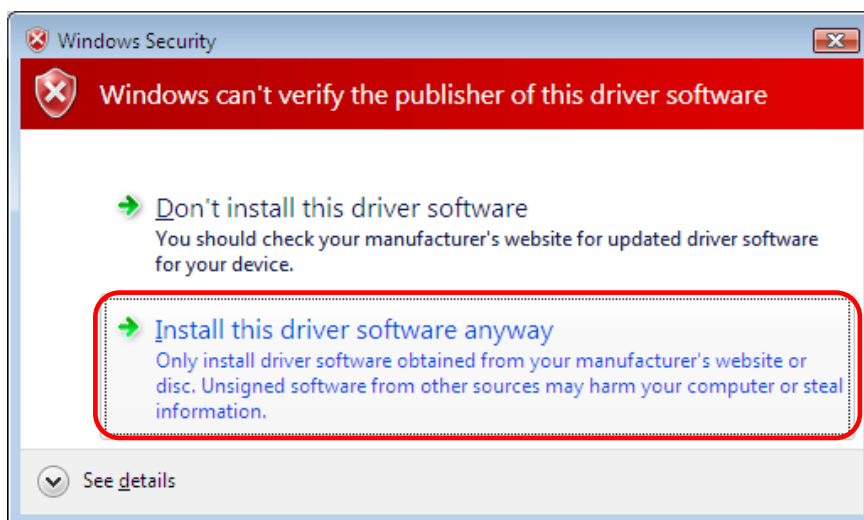


Fig 1.3.9 Windows Security confirmation

When the message “You’ve successfully added MITSUBISHI CP3800DW”, click on “Finish”.

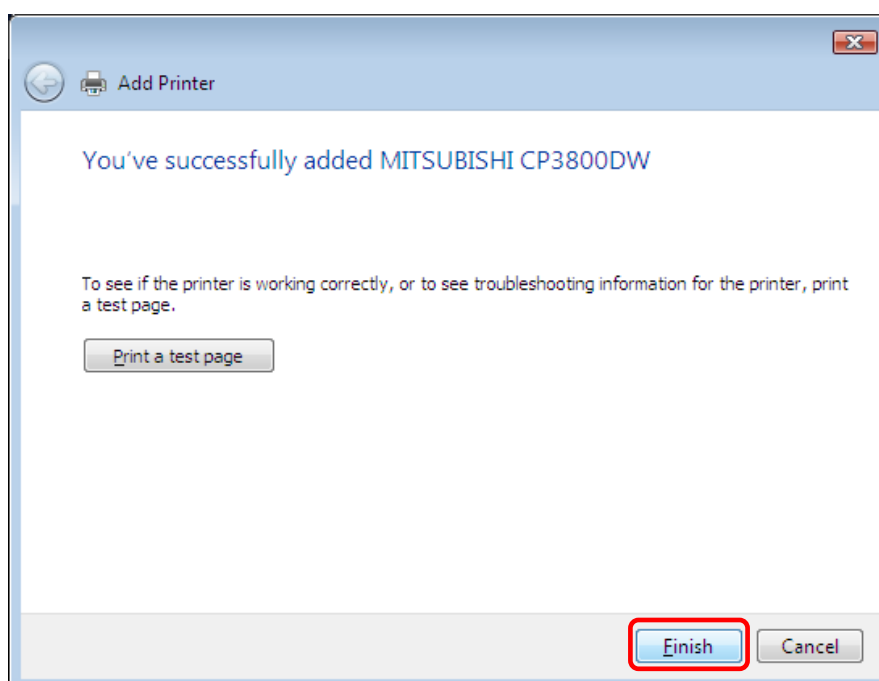


Fig 1.3.10 CP3800DW driver has been successfully installed

Check that the MITSUBISHI CP3800DW is shown in the Printer window.  
Now, installation of the MITSUBISHI CP3800DW printer driver is complete.

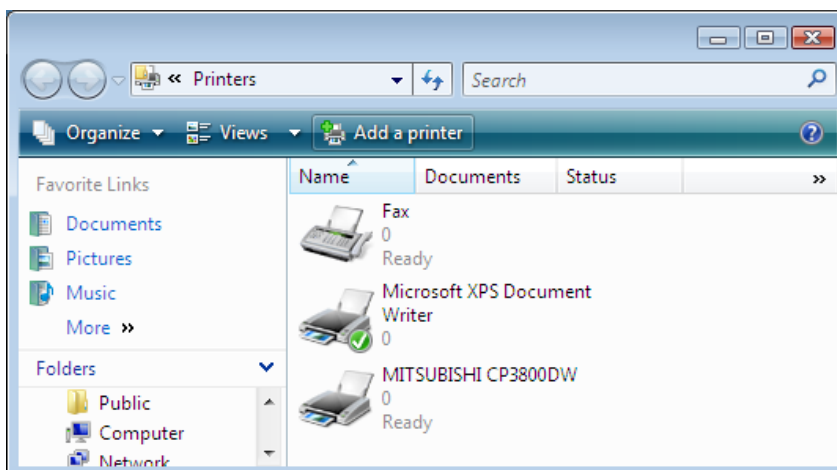


Fig 1.3.11 Printer window

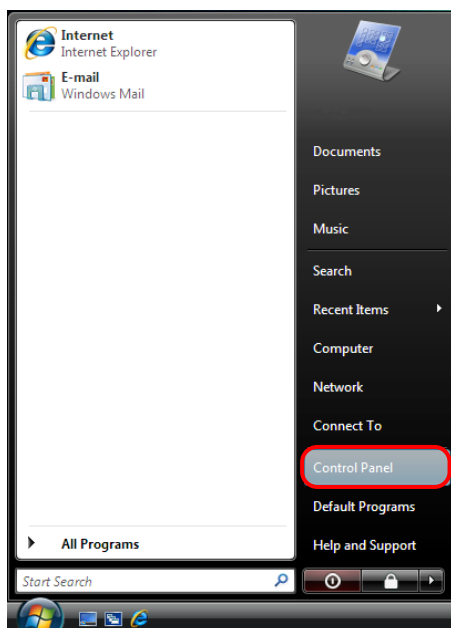
After installation of the printer-driver is complete, be sure to reboot the computer.

## Chapter 2 Properties

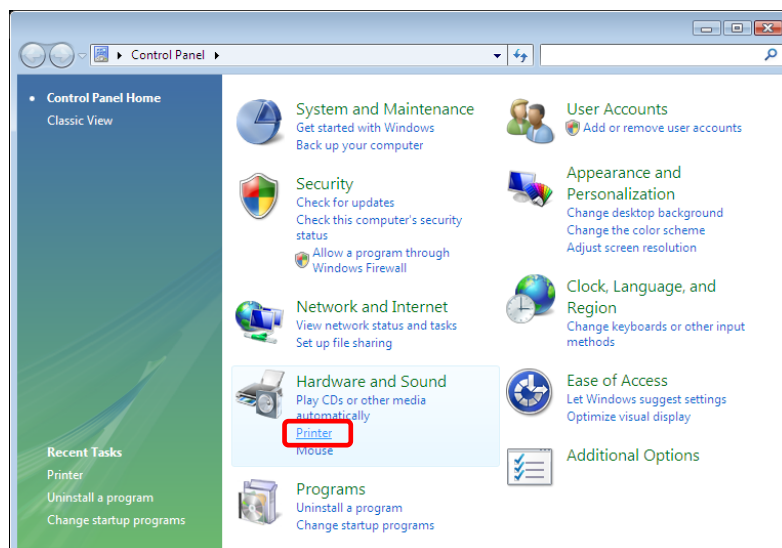
Various printer settings can be made using the CP3800DW Driver properties. As a rule, the printer settings should not be altered. Use the default settings present at installation. Alter paper-size settings at the Application side. Before operation, be sure to have a good understanding of the contents.

### 2.1 Opening Printer Properties

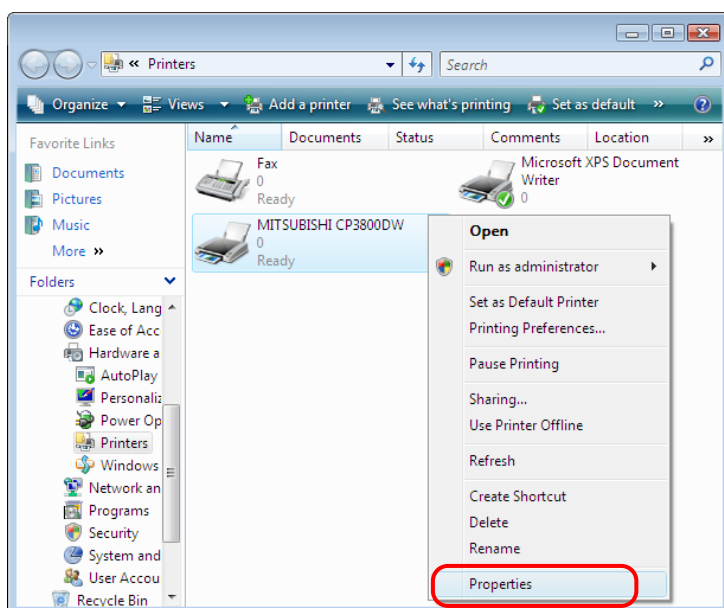
1. Click Start Control Panel open the control panel



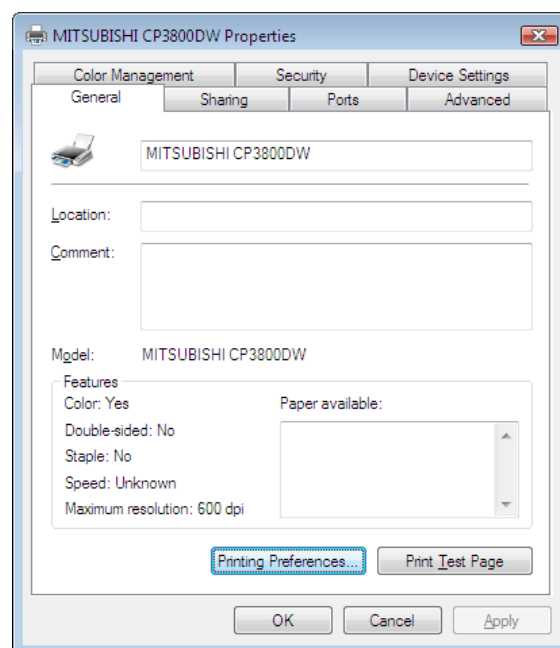
2. In the control panel, select Printer open the Printer window



3. Right-click on the CP3800DW icon, and from the pull-down menu select Properties open the Properties window



4. The CP3800DW Properties window will appear.



## 2.2 Explanation of Print Setting Functions

From the Properties window, by selecting Print Settings you can make various print settings.

### 2.2.1 Layout

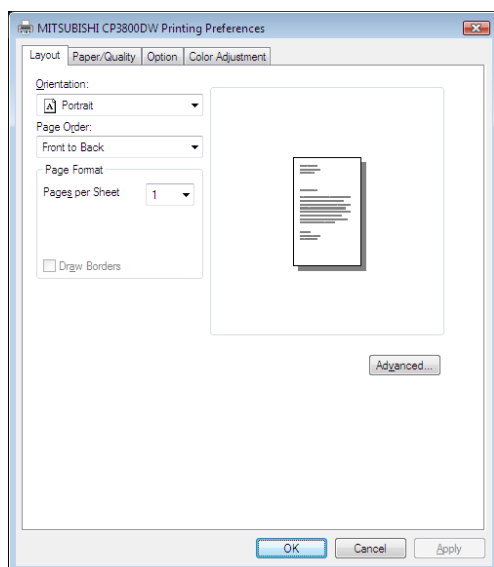


Fig.2.2.1 Layout tab

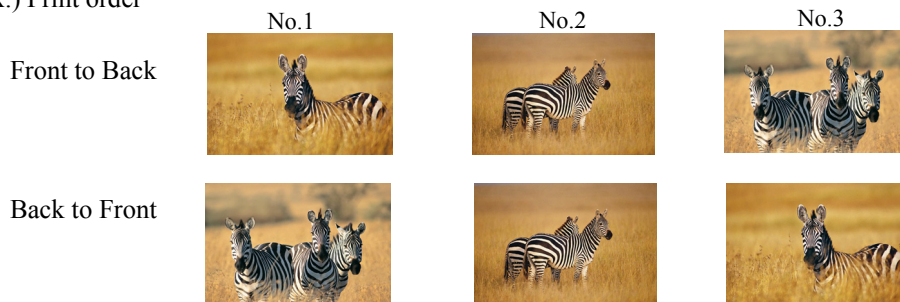
#### **Orientation**

Please set to Portrait.

#### **Page Order**

When printing multiple images in the application, you can set the order.

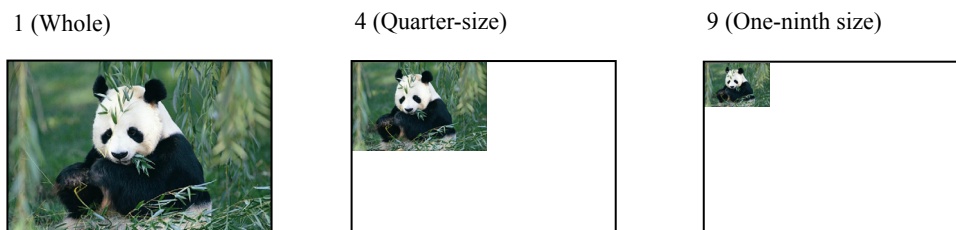
Ex.) Print order



#### **Pages per Sheet**

Prints the designated fractional size.

Ex.) Fractional size





## 2.2.2 Advanced Options

By selecting [Advanced...] in the Layout window, various settings can be made using Advanced Options.

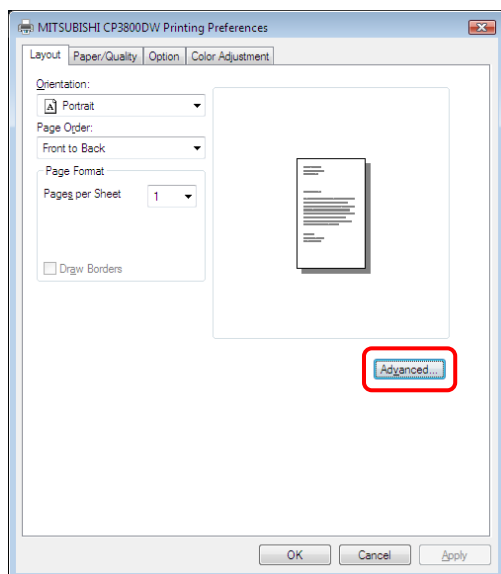


Fig.2.2.2.1 Printing Preferences

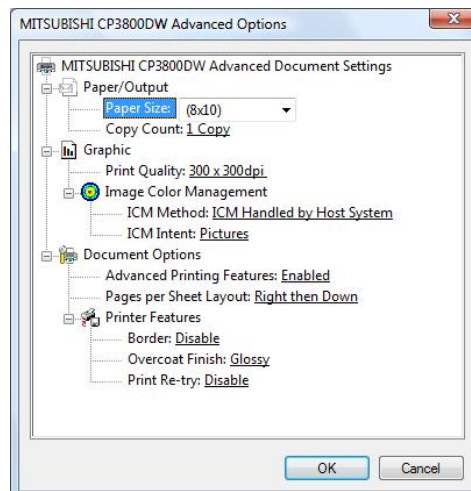


Fig.2.2.2.2 Advanced Options tab

### Paper Size

You can designate the paper size. Please match the paper size to the media size with which the printer is equipped

### Copy Count

You can designate the number of times an image will be printed.

### Print Quality

You can designate the print quality.

Print Quality	Function
<b>300 x 300dpi</b>	Printing in the high-speed mode
<b>300 x 600dpi</b>	Printing in the high-quality mode * If the application can not set an asymmetric aspect resolution, please set the 600x600dpi.
<b>600 x 600dpi</b>	Printing in the high-quality mode (Printer driver converts to 300x600dpi data, and sends it to the printer.)

### ICM Method

ICM intent	Function
<b>ICM Disabled</b>	2.2.4 Synchronous with “Color Management: None” in option.
<b>ICM Handled by Host System</b>	2.2.4 Synchronous with “Color Management: ICM” in option. Performs color management with the driver.
<b>ICM Handled by Printer</b>	This is the same as setting “ICM Handled by Host System”.

### ICM Intent

This designates the rendering method when using ICM. Always have the ICC profile for the CP3800DW set to “Picture”. Please do not use it at other settings.

### Advanced Printing Features

Always have it set to “Enabled”. Please do not use it at other settings.

### Pages per Sheet Layout

The layout direction of a picture is specified, when Pages per Sheet setting is multiple pages per sheet.

### Border

Synchronous with the border option in the option.

**Overcoat Finish** (Depending on the version of the printer, "Glossy" may be the only option)

There are two types of overcoat finish:

Overcoat Finish	Function
<b>Glossy</b>	The printed images with a glossy surface.
<b>Matte</b>	The printed images with a matte (luster) surface.

\* Re-boot computer is needed if the printer driver was updated. Otherwise this new driver function will not be available.

**Print Re-try** (Depending on the version of the printer, "Disable" may be the only option)

This sets up determines whether print data in the printer buffer is printed after error recovery.

Print Re-try	Function
<b>Disable</b>	Printing data in the printer buffer is cleared in case of a printer error. You may be required to re-send the image data to print. When using a program that has an error recovery function, select this option.
<b>Enable</b>	Image data in the printer buffer is held in the case of certain printer error. After the printer recover from the error, the print process resumes with the saved data. However, if the power is turned OFF, the data will not be saved. See chart below for errors which can resume printing.

\* Re-boot computer is needed if the printer driver was updated. Otherwise this new driver function will not be available.

**Printer errors recovery chart**

Error recovery is based on Print Re-try setting. You may be required to reset the printer power.

Contents of an error	Print Re-try setup is "Disable"	Print Re-try setup is "Enable"
<b>Paper End</b>	After error recovery, resend last image data not printed.	Printing will resume after error recovery.
<b>Ribbon End</b>		In some cases where printer initialize is needed, printing will resume after initialization.
<b>Door is Open</b>		
<b>Paper Jam (*1)</b>		
<b>Ribbon Error (*1)</b>		
<b>Paper Error</b>		
<b>No Scrap Box</b>	Reset printer power to recover from this error. Then resend the last image data not printed.	Reset printer power to recover from this error. Data held in the printer buffer is cleared after power reset. Resend image data is required.
<b>System Error</b>		

\*1: Please refer to the user's manual to recover from these errors.

### 2.2.2-1 Multiple layout method 1

The CP3800DW is able to print 2 or 3 images multiple layouts.

With the printer driver paper setting, multi-image layout is made possible, and the image sizes are as follows.

Refer to “2.2.2-2 Multiple layout method 2” for multi-cut paper settings with the “M\_” prefix.

Layout designation

Model	Driver paper setting (layout)	Image size(mm)	Using Media
CP3800DW	(8x4) x 2	(207.3x104.6) x 2	8x12, 8x10
	(8x5) x 2	(207.3x130.0) x 2	8x12, 8x10
	(8x6) x 2	(207.3x155.4) x 2	8x12
	(8x5)_(8x4)	(207.3x130.0) + (207.3x104.6)	8x12, 8x10
	(8x6)_(8x4)	(207.3x155.4) + (207.3x104.6)	8x12, 8x10
	(8x6)_(8x5)	(207.3x155.4) + (207.3x130.0)	8x12
	(8x8)_(8x4)	(207.3x206.2) + (207.3x104.6)	8x12
	(8x4) x 3	(207.3x104.6) x 3	8x12
Image layout median size		2.54	

Multiple layout is possible under the following conditions.

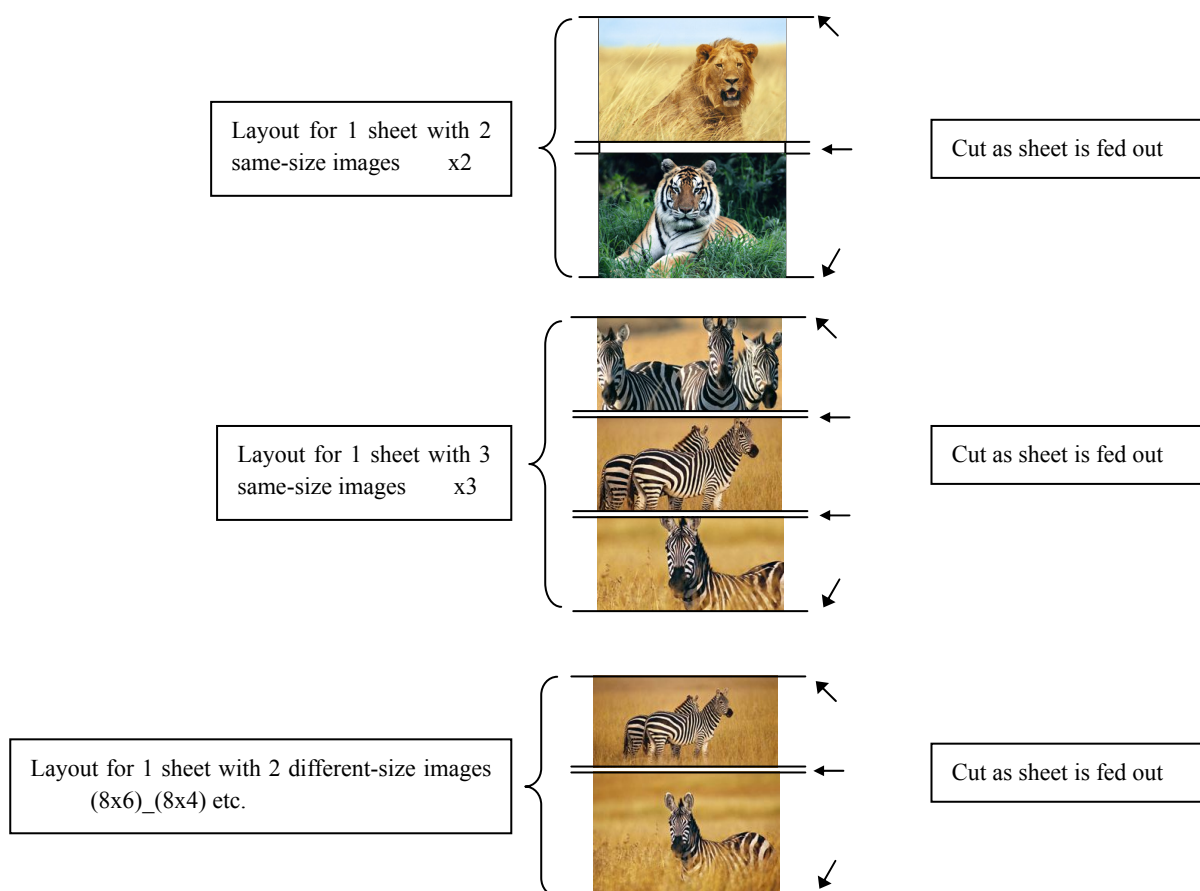
1. The printer driver paper size is set to one of the above sizes.
2. Multiple images are sent from the application.

Note) Because the multi-image layout occurs on a per job basis, this works when there are multiple images for 1 job.

If you want to print the same image, be sure to send the image data for each copy to be printed. The printer prints 2 or 3 images in one operation, and the paper is cut as it is fed out.

#### <Multi-image layout patterns>

The following combinations are possible for the multi-image layout patterns.



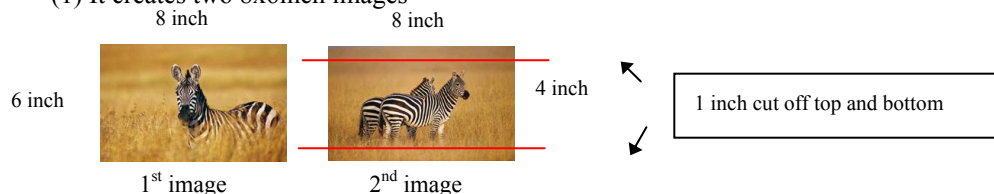
### **Cautions for printing 2 different-size images on one sheet**

When printing 2 different-size images on 1 sheet, 1 inch will be cut off the top and bottom of the 2<sup>nd</sup> image when the image is being generated. When creating the original image, be aware of the following points.

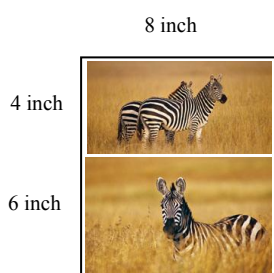
Ex.) When the layout is set for (8x6)\_(8x4)

The driver creates the layout image in the order of (1),(2)

(1) It creates two 8x6inch images

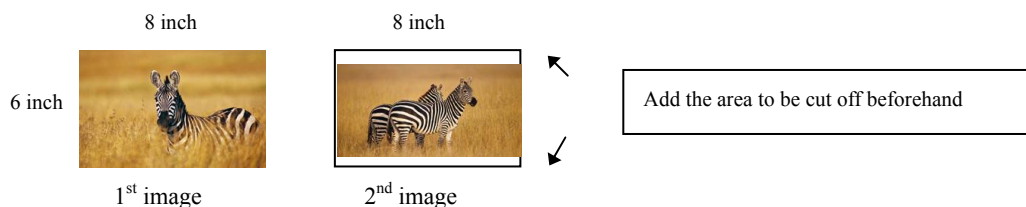


(2) The driver then lays out the 2 different-size images from (1) as one (8x10) image and outputs it to the printer.



Ex.) Example of creating the original image.

When outputting the original image to the driver, the 1<sup>st</sup> and 2<sup>nd</sup> images are created as the same size, so factor in the space that will be cut off from the 2<sup>nd</sup> image.



#### **2.2.2-2 Multiple layout method 2**

When running a multi-cut print of an image that has been prepared as a multi-image layout, select the multi-cut paper size with the “M\_” prefix from the table below.

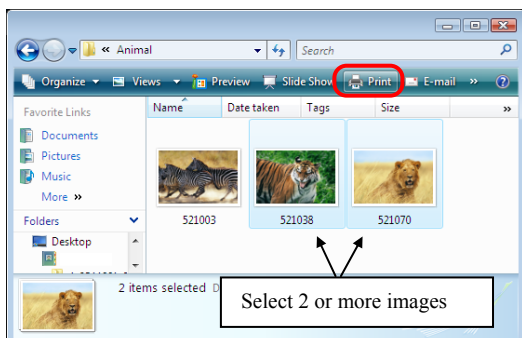
When these paper sizes are selected, the border option (paper option tab “Border”, or advanced option “Border”) is automatically set to disable, and cannot be changed. Because the driver processes it as no border, if a border is required, it should be added during image layout.

Model	Driver paper setting (layout)	Image size	Using Media
CP3800DW	M_(8x4) x 2	Refer to “2.5 Print Area” in “Print area of the multiple layout method 2”.	8x12, 8x10
	M_(8x5) x 2		8x12, 8x10
	M_(8x6) x 2		8x12
	M_(8x5)_(8x4)		8x12, 8x10
	M_(8x6)_(8x4)		8x12, 8x10
	M_(8x6)_(8x5)		8x12
	M_(8x8)_(8x4)		8x12
	M_(8x4) x 3		8x12

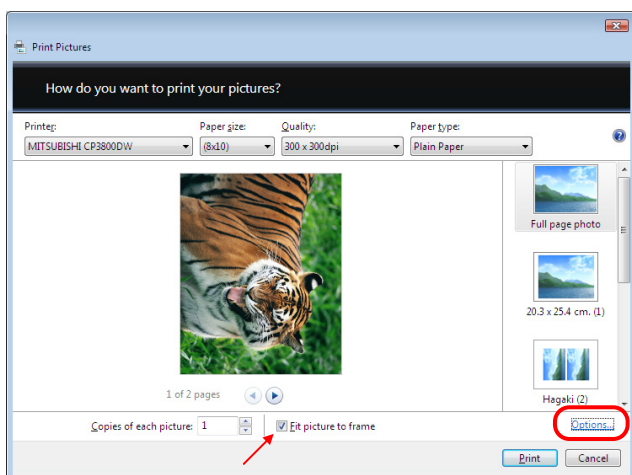
**<Example of using application of Multiple layout method 1>**

This is an example using Windows Explorer

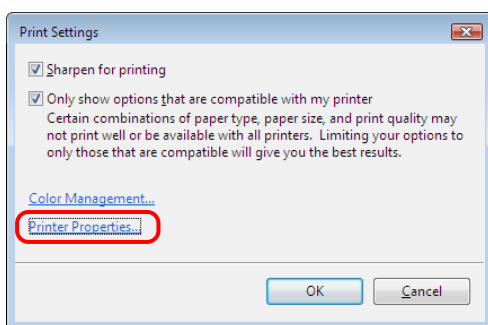
Step 1. Select 2 or more images Click "Print".



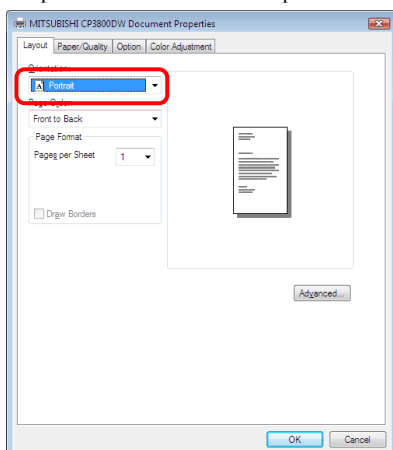
Step 2. Check "Fit picture to frame" and click "Options".



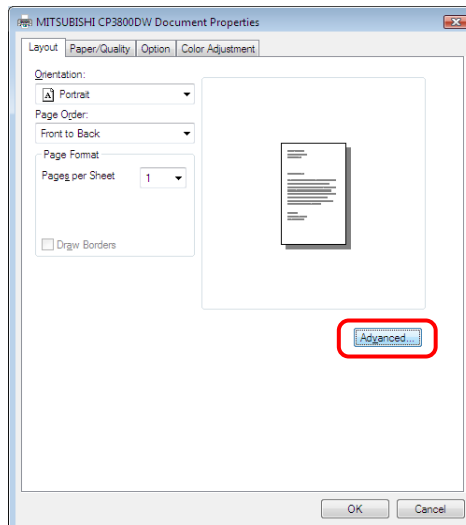
Step 3. Click on "Printer Properties".



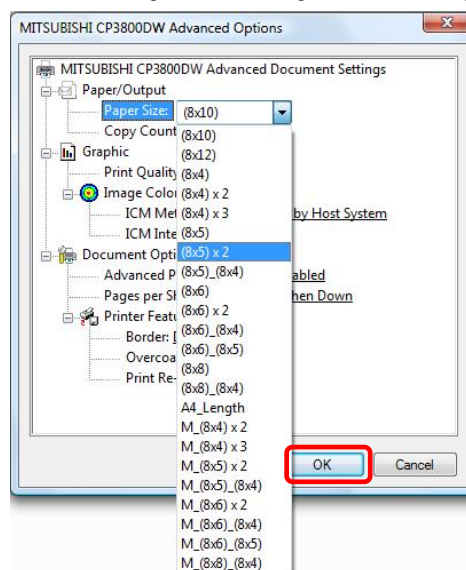
Step 4. From the "Orientation" pull-down menu, select "Portrait".



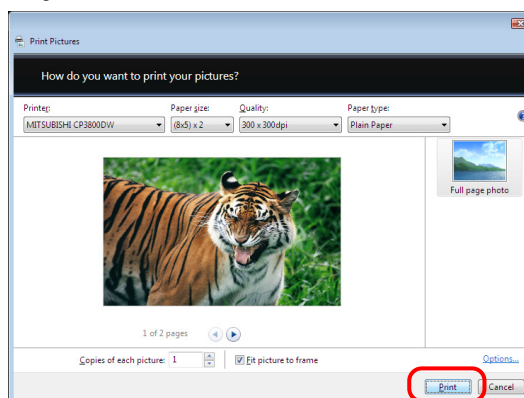
Step 5. Click on "Advanced".



Step 6. Set the Paper Size to "(8x5)x2". Then click "OK" on the windows from steps 6 - 5, returning to the window displayed in Step 2.



Step 7. Click on "Print".



## 2.2.3 Paper/Quality

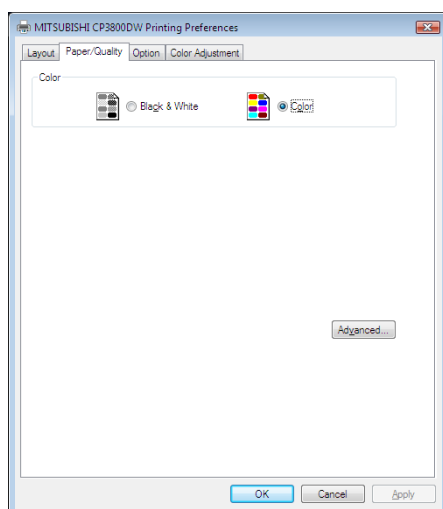


Fig.2.2.3 Paper/Quality tab

**Color** Please set to color print. Do not use for black and white printing.

## 2.2.4 Option

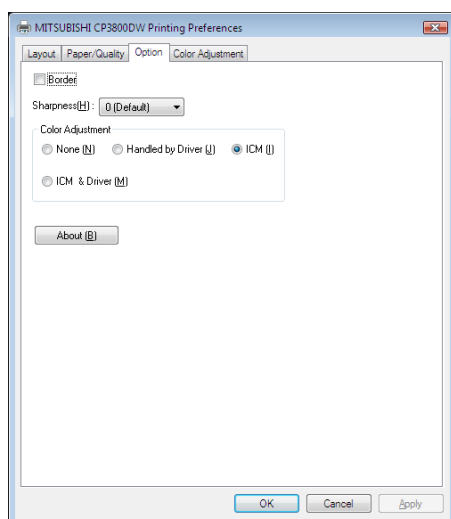


Fig.2.2.4.1 Option tab

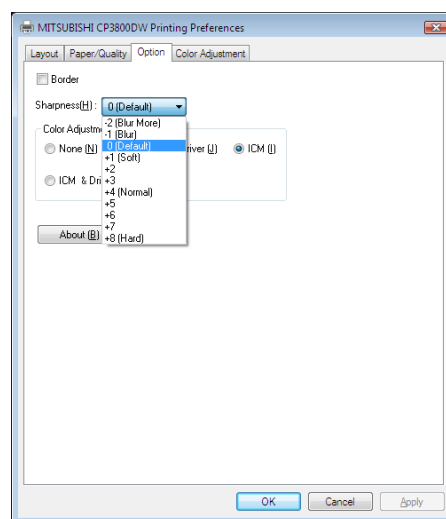


Fig.2.2.4.2 Sharpness setting

### Border

Designates yes or no for border (check means with border). Synchronous with border in the Advanced Settings.

### Sharpness

Processes for 11 sharpness levels (Fig.2.2.4.2). 0(Initial setting) means there is no sharpness processing. Minus(-) blurs the image, and plus(+) increases the sharpness.

### Color Adjustment

#### None

Synchronous with the ICM Method in the Advanced Settings. Checking this item disables ICM and the Color Adjustment tab, and color management does not occur from the driver.

#### Handled by Driver

Checking this item disables ICM and [2.2.5 Color Adjustment](#) is enabled. The adjustment values for gamma, brightness, contrast, and chroma are shown.

#### ICM

Synchronous with the ICM Method in the Advanced Settings (ICM Handled by Host System). Checking this item enables color management from the driver.

#### ICM & Driver

If you check this, ICM (color management) and color adjustment will be enabled.

### About

Displays the driver version.

## 2.2.5 Color Adjustment

If you check **Handled by Driver** in 2.2.4 Option, the respective color adjustment values in the Color Adjustment tab are reflected in the image.

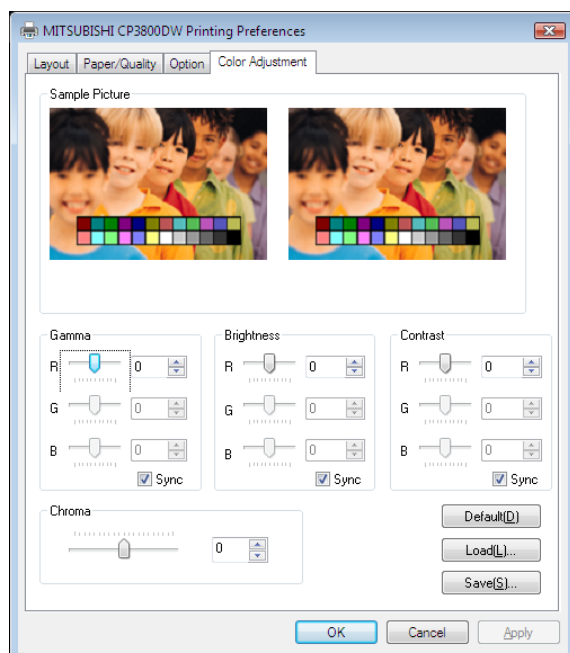


Fig 2.2.5 Color Adjustment tab

Setting ranges in the Color Adjustment tab are as follows:

Adjustment Item	Adjustment Value
<b>Gamma</b>	-100(dark) ~ 100(light) (0 means no adjustment, Gamma 2.0 ~ 0.5) Adjusts the density of the highlights in the image. The greater the gamma value, the brighter the highlights. Synchronous check box ON : Sets RGB at the same value OFF:Sets RGB at a different value
<b>Brightness</b>	-100(dark) ~ 100(light) (0 means no adjustment) Adjusts the brightness of the image. The larger the value, the greater the overall brightness of the image. Synchronous check box ON :Sets RGB at the same value OFF:Sets RGB at a different value
<b>Contrast</b>	-100(weak) ~ 100(strong) (0 means no adjustment) Adjusts the contrast of the image. The larger the value, the greater the contrast. Synchronous check box ON : Sets RGB at the same value OFF: Sets RGB at a different value
<b>Chroma</b>	-100(weak) ~ 100(strong) (0 means no adjustment) Adjusts the color saturation of the image.

## 2.3 Default Values for Various Settings

Default values for each option (at the time of installation) are shown below. If the printer driver does not work correctly after changing the options, please return the options to the default settings.

Note) According to the Service Pack and use environment of OS, the default value at the time of installation may differ from the following chart.

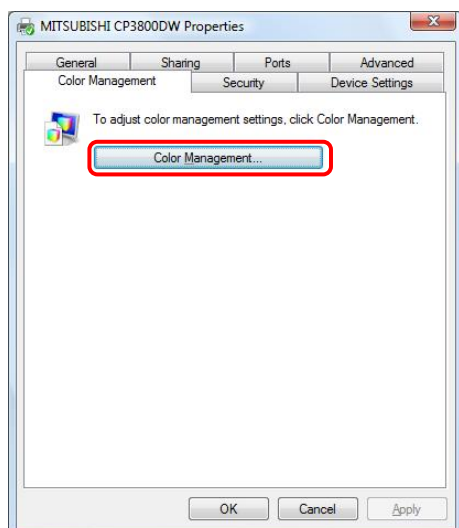
Tab	Options		Default
Layout	Orientation		Portrait
	Page Order		Front to Back
	Pages Per Sheet		1
Paper/Quality	Color		Color
Option	Border		Disable
	Sharpness		0 (Default)
	Color Adjustment		ICM
Color Adjustment	Gamma		0
	Brightness		0
	Contrast		0
	Chroma		0
Advanced (Click [Advanced...] button of Layout tab)	Paper/Output	Paper Size	(8x10)
		Copy Count	1
	Graphic	Print Quality	300 x 300dpi
		Image Color Management	ICM Method ICM Intent
			ICM Handled by Host System Pictures
	Document Option	Advanced Printing Features	Enable
		Pages per Sheet Layout	Right then Down
		Printer Features	Border
			Overcoat Finish
			Print Re-try

Chart 2.3 Print Setting Default Values

## 2.4 Color Management

In [Color Management], this designates the color profile. Default at installation associates [CP38\_xxxx].  
xxxx is a 4-digit number that refers to the version.

Step 1. Select “Color Management” tab in “Printer Properties”, and click on “Color Management” button.



Step 2. Choose printer: MITSUBISHI CP3800DW from a device.

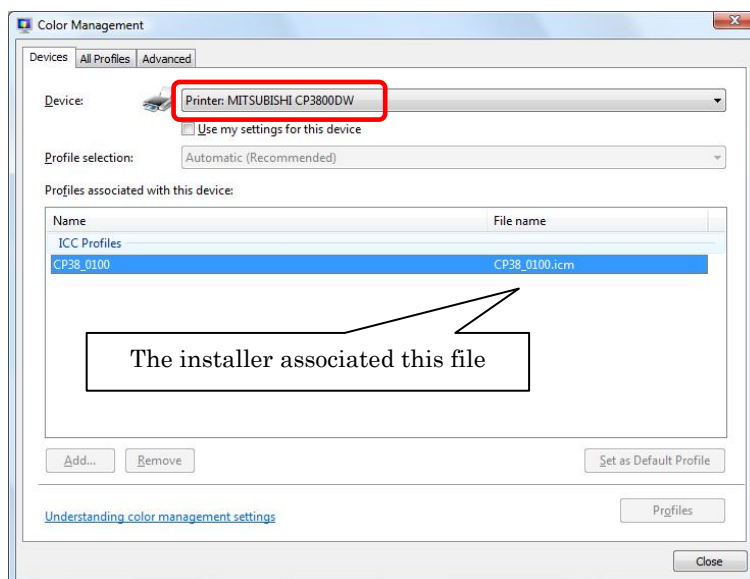


Fig.2.4 Color Management



## 2.5 Print Area

Depending on the paper size designated at the driver, the image size and dot count will be as follows.

Model	Paper	Size (inch)	Print Area (mm)	300x300 DPI Dot amount	300x600 DPI Dot amount	600x600 DPI Dot amount *
CP3800DW	(8x4)	8"x 4"	207.3 x 104.6	2448 x 1236	2448 x 2472	4896 x 2472
	(8x5)	8"x 5"	207.3 x 130.0	2448 x 1536	2448 x 3072	4896 x 3072
	(8x6)	8"x 6"	207.3 x 155.4	2448 x 1836	2448 x 3672	4896 x 3672
	(8x8)	8"x 8"	207.3 x 206.0	2448 x 2436	2448 x 4872	4896 x 4872
	(8x10)	8"x 10"	207.3 x 257.0	2448 x 3036	2448 x 6072	4896 x 6072
	A4 Length	8"x 11.7"	207.3 x 297.0	2448 x 3544	2448 x 7088	4896 x 7088
	(8x12)	8"x 12"	207.3 x 307.8	2448 x 3636	2448 x 7272	4896 x 7272

<Print area of the multiple layout method 2>

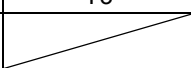
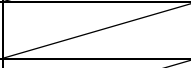
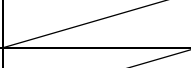
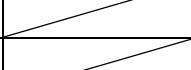
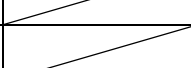
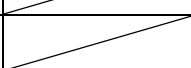
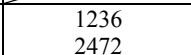

The size after multiple image layout.

Model	Paper setting	Print Area (mm)	300x300 DPI Dot amount	300x600 DPI Dot amount	600x600 DPI Dot amount *
CP3800DW	M_(8x4) x 2	207.3 x 211.8	2448 x 2502	2448 x 5004	4896 x 5004
	M_(8x5) x 2	207.3 x 262.6	2448 x 3102	2448 x 6204	4896 x 6204
	M_(8x6) x 2	207.3 x 313.4	2448 x 3702	2448 x 7404	4896 x 7404
	M_(8x5) _ (8x4)	207.3 x 237.2	2448 x 2802	2448 x 5604	4896 x 5604
	M_(8x6) _ (8x4)	207.3 x 262.6	2448 x 3102	2448 x 6204	4896 x 6204
	M_(8x6) _ (8x5)	207.3 x 288.0	2448 x 3402	2448 x 6804	4896 x 6804
	M_(8x8) _ (8x4)	207.3 x 313.4	2448 x 3702	2448 x 7404	4896 x 7404
	M_(8x4) x 3	207.3 x 319.0	2448 x 3768	2448 x 7536	4896 x 7536

\*The horizontal line resolution of this printer is 300 DPI, so if 600x600 DPI is designated, the driver will reduce the image width from 4896 dots to 2448 dots and send this to the printer.

Multi-image layout position information (multi-cut paper sizes with the prefix "M\_")

Refer to the layout diagram (Fig.2.5.1, Fig.2.5.2)

Paper setting	Width [pixel]	Image height [pixel]			M (Margin)
	X	Y1	Y2	Y3	
M_(8x4) x 2	2448	1236	1236		30
	4896	2472	2472		60
M_(8x5) x 2	2448	1536	1536		30
	4896	3072	3072		60
M_(8x6) x 2	2448	1836	1836		30
	4896	3672	3672		60
M_(8x5) _ (8x4)	2448	1536	1236		30
	4896	3072	2472		60
M_(8x6) _ (8x4)	2448	1836	1236		30
	4896	3672	2472		60
M_(8x6) _ (8x5)	2448	1836	1536		30
	4896	3672	3072		60
M_(8x8) _ (8x4)	2448	2436	1236		30
	4896	4872	2472		60
M_(8x4) x 3	2448	1236	1236		30
	4896	2472	2472		60

Upper value = 300DPI

Lower value = 600DPI

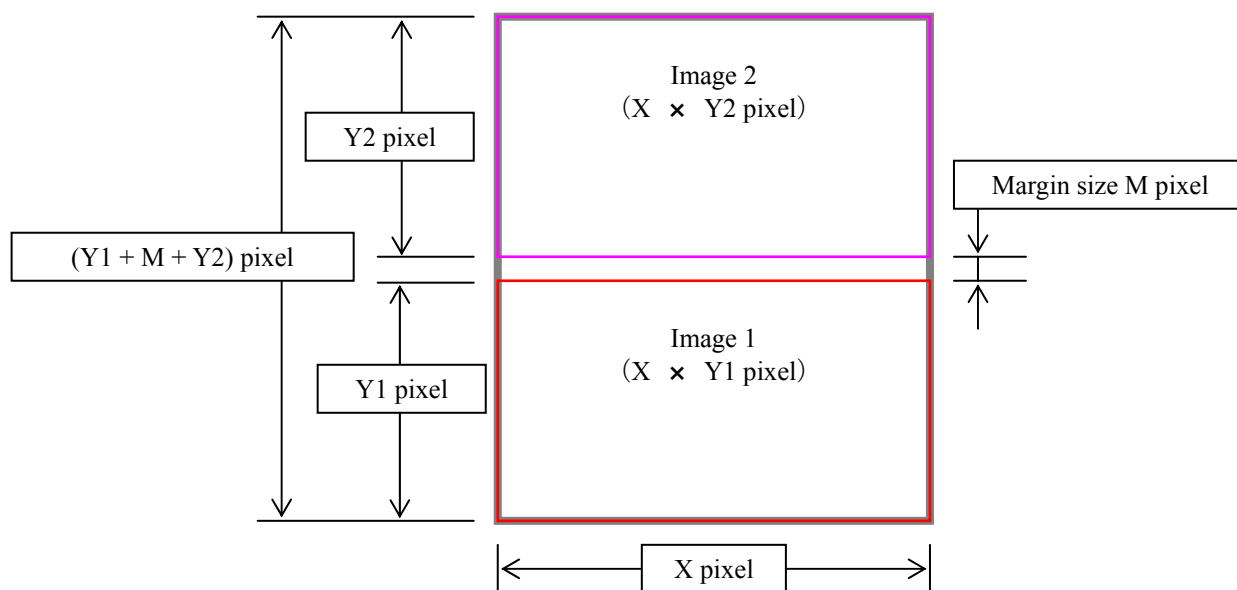


Fig.2.5.1 2-image layout

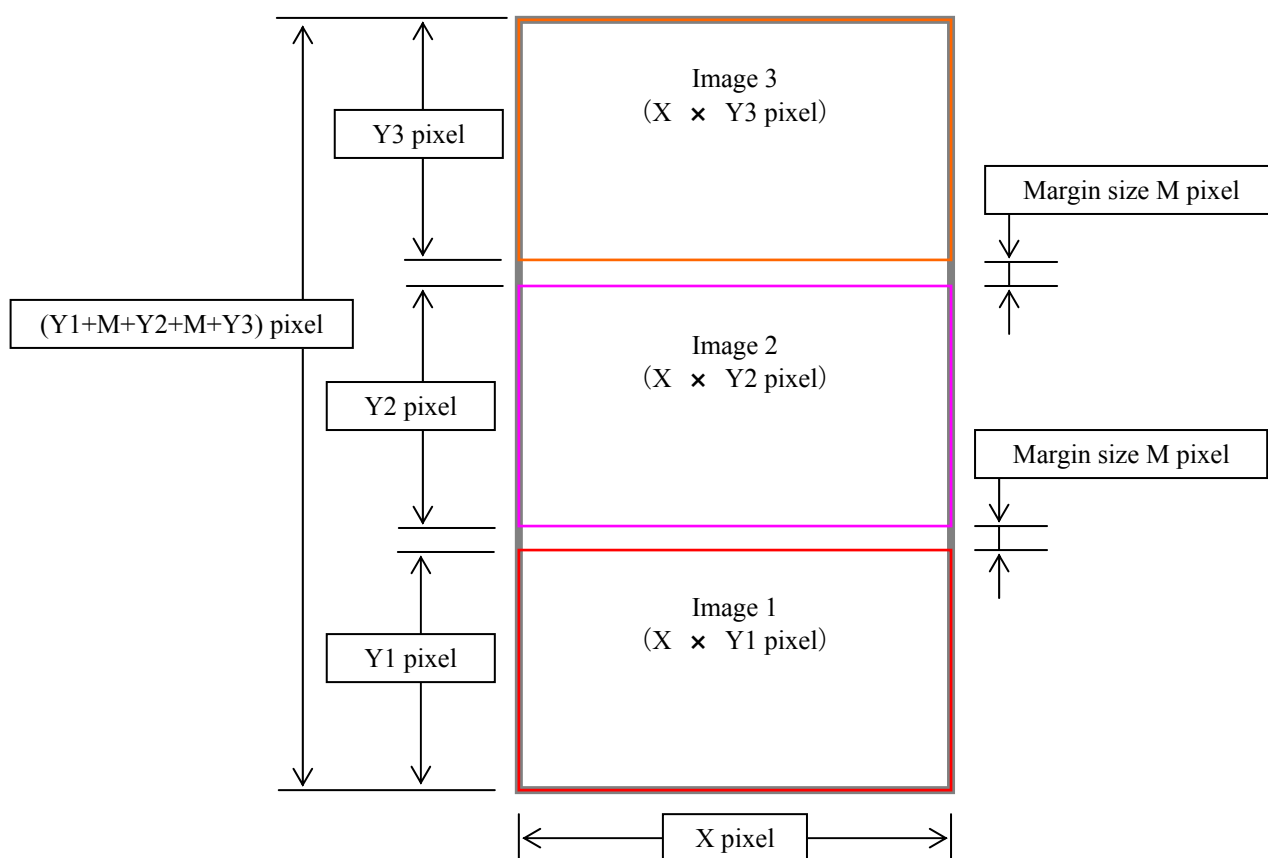


Fig.2.5.2 3-image layout

## Chapter 3 Updating the Driver

In order to update the printer-driver, follow the steps shown below.

### 1 Driver Removal

- (1) Before removing the printer-driver, shut down all other applications. Also, double click the icon for the printer to be removed, and make sure there are no documents in the queue before you begin removal of the driver.

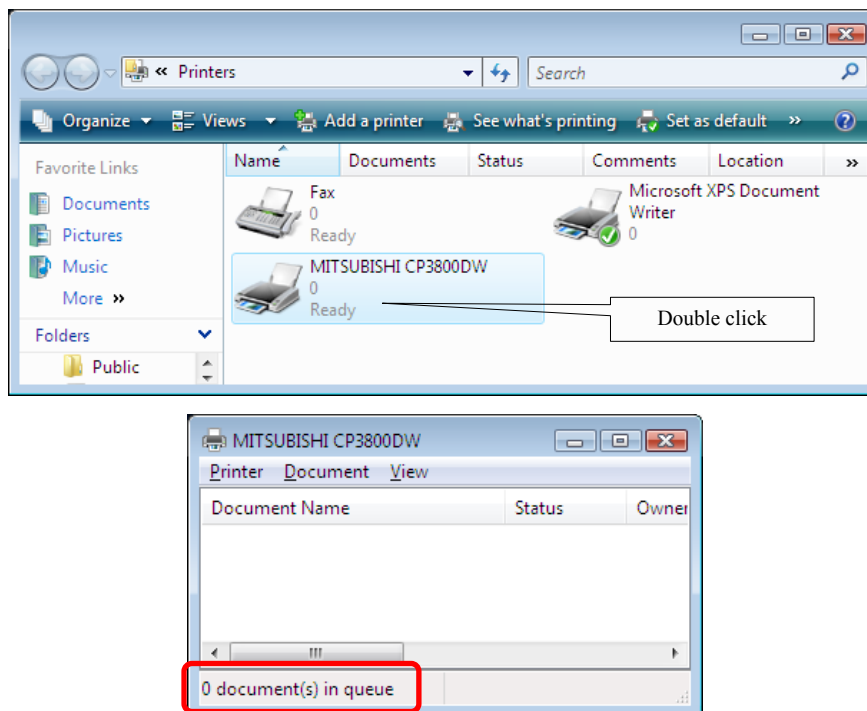


Fig 3.1.1 Confirmed that there are no document in the queue

- (2) Select “Start”–“Control Panel”, and click on “Printer” in the control panel. From the “Printer” window, select the MITSUBISHI CP3800DW printer, display the pull-down menu with the right click, and click on “Delete”.

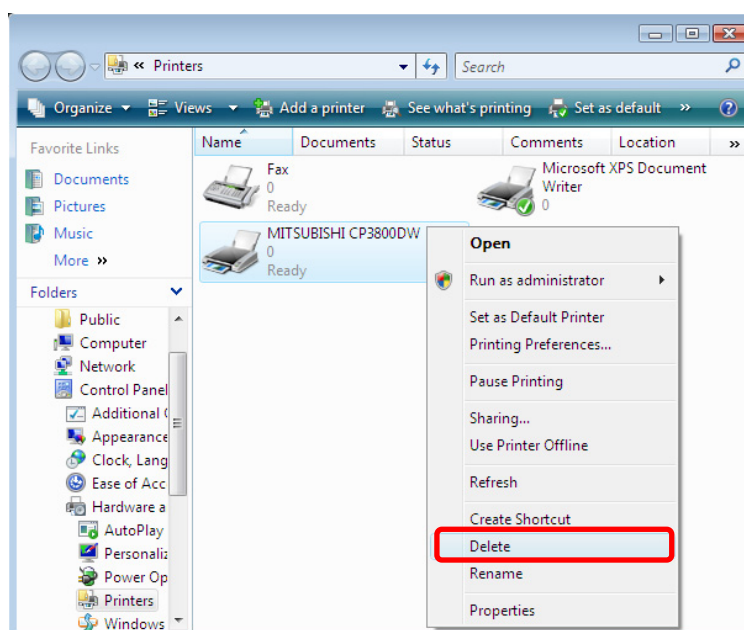


Fig 3.1.2 Printer window; CP3800DW right-clicked menu

- (3) When “Are you sure you want to delete the printer ‘MITSUBISHI CP3800DW’?” appears, click on “Yes”.

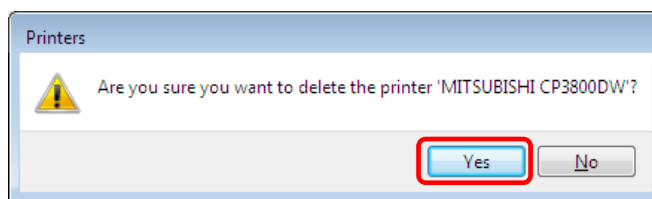


Fig 3.1.3 Delete Printer confirmation window

- (4) After the MITSUBISHI CP3800DW has been deleted, right-click where there is no icon, and get the pull-down menu. In the pull-down menu, click on “Run as administrator”— “Server Properties...”.

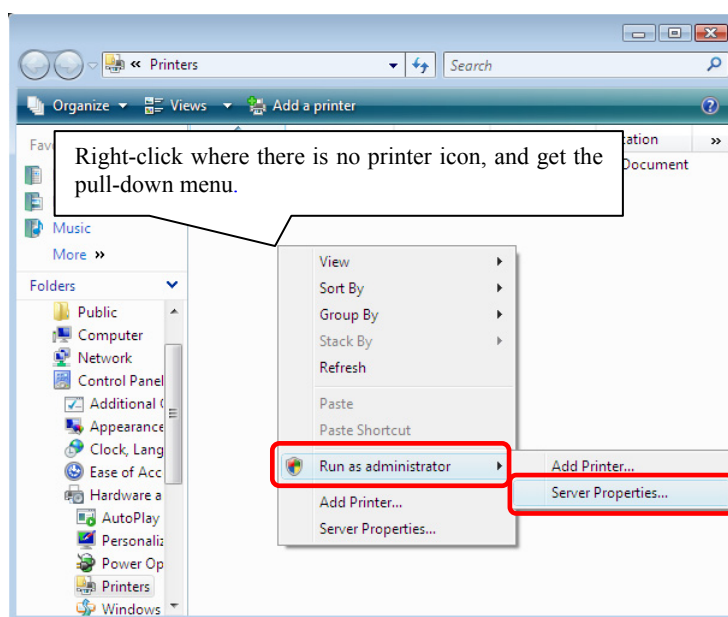


Fig 3.1.4 Pull-down menu opened by right-clicking on the Printer window

Note) After this, user account control will request confirmation with “Windows needs your permission to continue.” Click on the “Continue” button.

- (5) When the Print Server Properties window appears, click on the Drivers tab. From the list of installed printer drivers, select “MITSUBISHI CP3800DW”, and click the “Remove...” button.

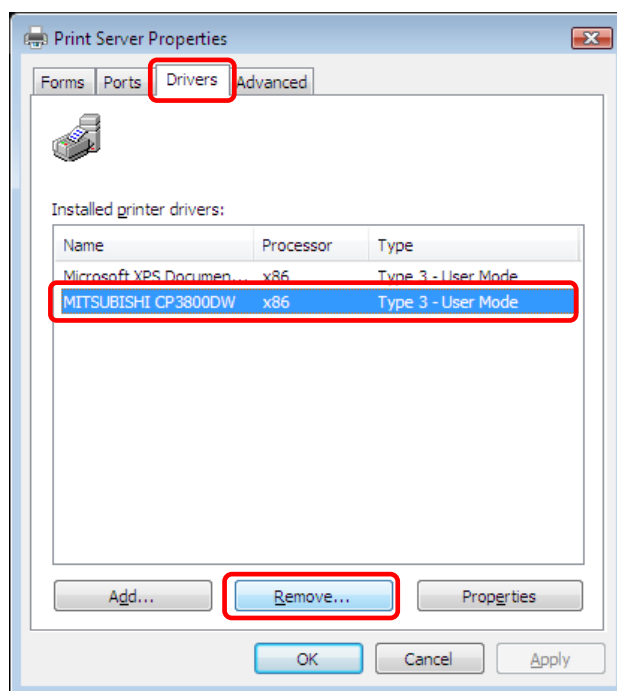


Fig 3.1.5 Print Server Properties window

- (6) When the Remove Driver and Package window appears, select “Remove driver and driver package.”, and click on the “OK” button.

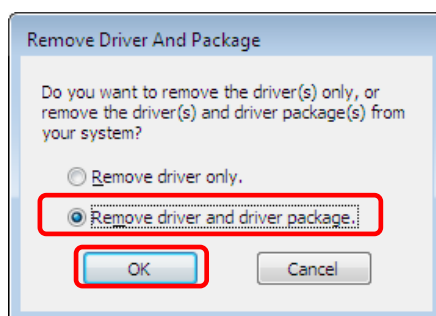


Fig 3.1.6 Remove Driver and Package window

- (7) When the Print Server Properties confirmation window appears, click on the “Yes” button.

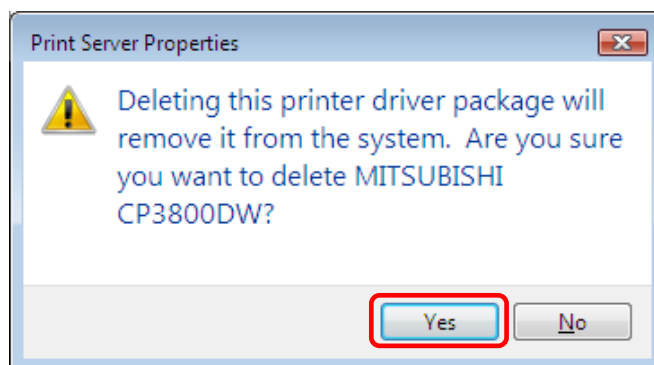


Fig 3.1.7 Print Server Properties confirmation window

(8) When the Remove Driver Package window appears, click on the “Delete” button.

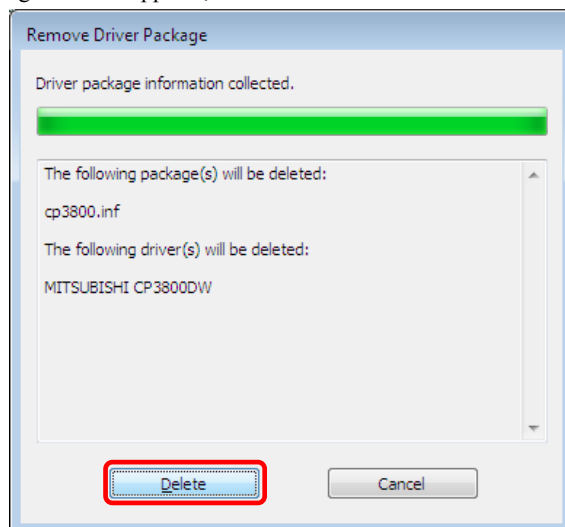


Fig 3.1.8 Remove Driver Package window

(9) When the Driver Package Deleted window appears, click on the “OK” button.

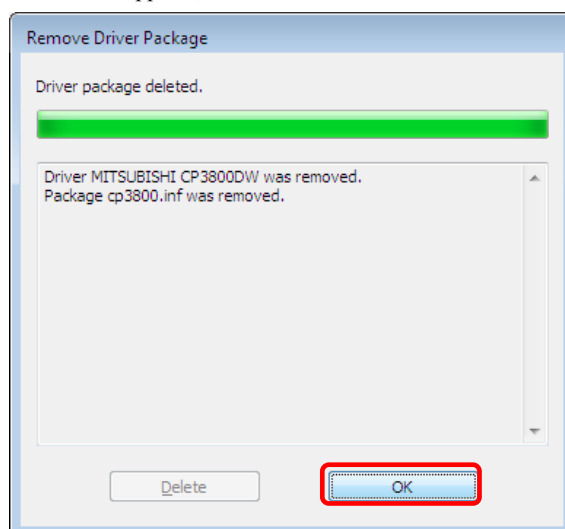


Fig 3.1.9 Driver Package Deleted window

Note) Before removing the printer-driver, if the following error message appears, please reboot the computer. After the computer has been rebooted, repeat the steps to remove the printer-driver.

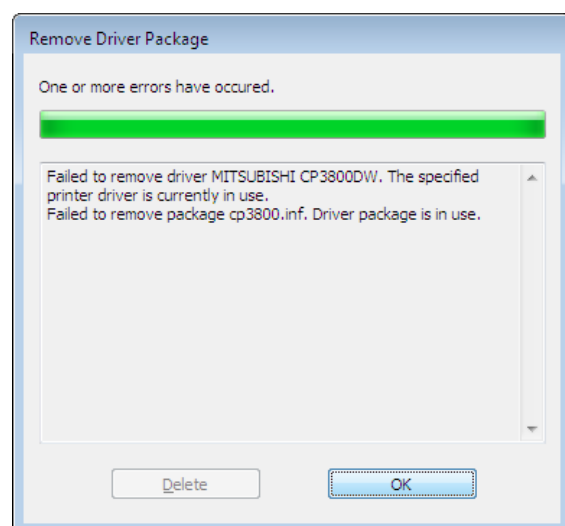


Fig 3.1.10 Error message that was not able to remove Driver Package

- (10) Using the Print Server Properties window, confirm that “MITSUBISHI CP3800DW” has been removed, and click on the “Close” button. Now the removal of the printer driver is complete. After removal, reboot the computer.

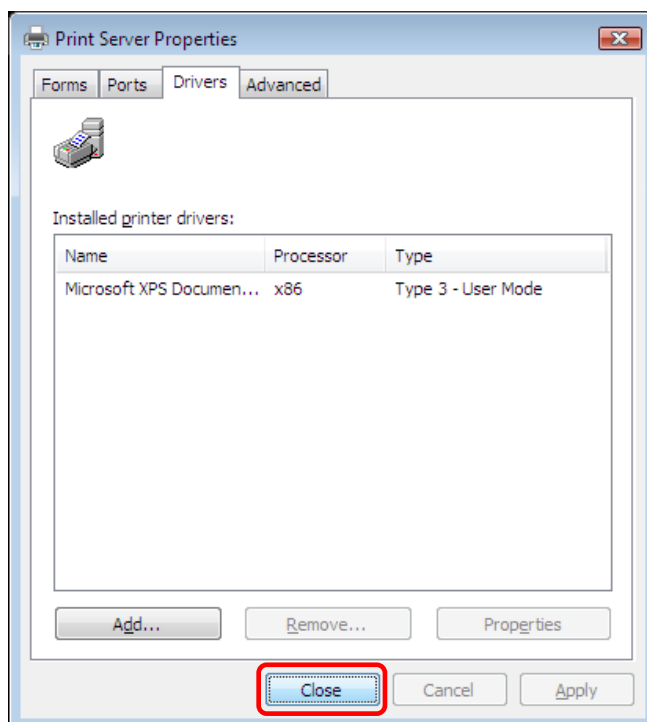


Fig 3.1.11 Print Server Properties window

## **2 Installing the printer-driver upgrade**

After removing the printer and printer-driver, install the new printer-driver. For installation steps, please refer to Chapter 1 “Install”.

## **3 Rebooting the computer**

After installation of the printer-driver is complete, be sure to reboot the computer.  
(Do not print immediately after installation. First reboot the computer.)

## Chapter 4 Driver Removal

For steps to remove the printer-driver, refer to Chapter3-1 “Driver Removal”