

Printer Driver Instruction Manual

~ For Windows 2000, XP ~

CP3800DW

●Safety precautions

Please read the User's Manual for the printer carefully before use, and follows the instructions. Note that the contents of directions for use and safety precautions correspond to the safety standards as of the time the User's Manual has been created.

●Remodeling

For product safety, do not remodel the CP3800DW printers or the contents of the CP3800DW printer drivers and the CD.

●Copyright

Copyrights, trademarks or any other intellectual property rights whatsoever that pertain to documents, programs or other items provided with this product, are owned and/or assigned to the Mitsubishi Electric Corporation, or the respective other holders of rights. Except in cases permitted by applicable laws, these may not be duplicated or used without consent from the Mitsubishi Electric Corporation or the respective other holders of rights.

Microsoft and Windows are registered trademarks of Microsoft Corporation valid in the USA and other countries.
LEADTOOLS Copyright (C) 2007 LEAD Technologies, Inc.

Contents

Chapter 1 Install	1
1.1 Printer and Host computer Connection	1
1.2 Found New Hardware Wizard	1
1.3 Install from Add Printer Wizard	5
Chapter 2 Properties	11
2.1 Opening Printer Properties	11
2.2 Explanation of Print Setting Functions	12
2.2.1 Layout	12
2.2.2 Advanced Options	13
2.2.3 Paper/Quality	19
2.2.4 Option	19
2.2.5 Color Adjustment	20
2.3 Default Values for Various Settings	21
2.4 Color Management	21
2.5 Print Area	22
Chapter 3 Updating the Driver	24
Chapter 4 Driver Removal	26

Chapter 1 Install

1.1 Printer and Host computer Connection

Power ON the CP3800DW and connect the CP3800DW printer and the host by USB cable.

* Please refer to the manual for the CP3800DW printer for connection if needed.

After that, if [Found New Hardware Wizard] is initiated, please install using the procedure in [1.2 Found New Hardware Wizard]. If [Found New Hardware Wizard] is not initiated, please install in accordance with [1.3 Install from Add Printer Wizard].

1.2 Found New Hardware Wizard

After confirming [Install from a list or specific location [Advanced]] is selected, click [Next].

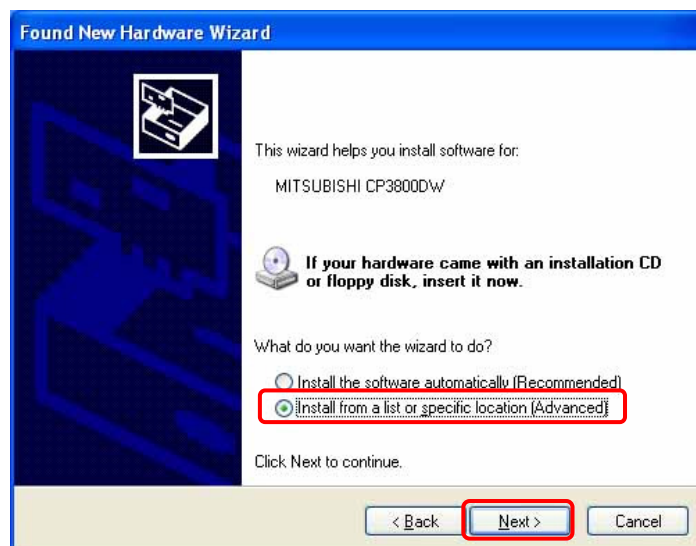


Fig 1.1-a Found New Hardware Wizard

Note) When using Windows XP SP2 or later, if the following screen appears in “Found New Hardware Wizard”, select “No, not this time”, and click the “Next” button.



Fig 1.1-b Found New Hardware Wizard

Select [Search for the best driver in these locations], and confirm that [Include this location in the search] is selected.

Specify the location of the installation disk using the [Browse] button, and click [Next].

*The location is different by the OS. (XP or 2K)

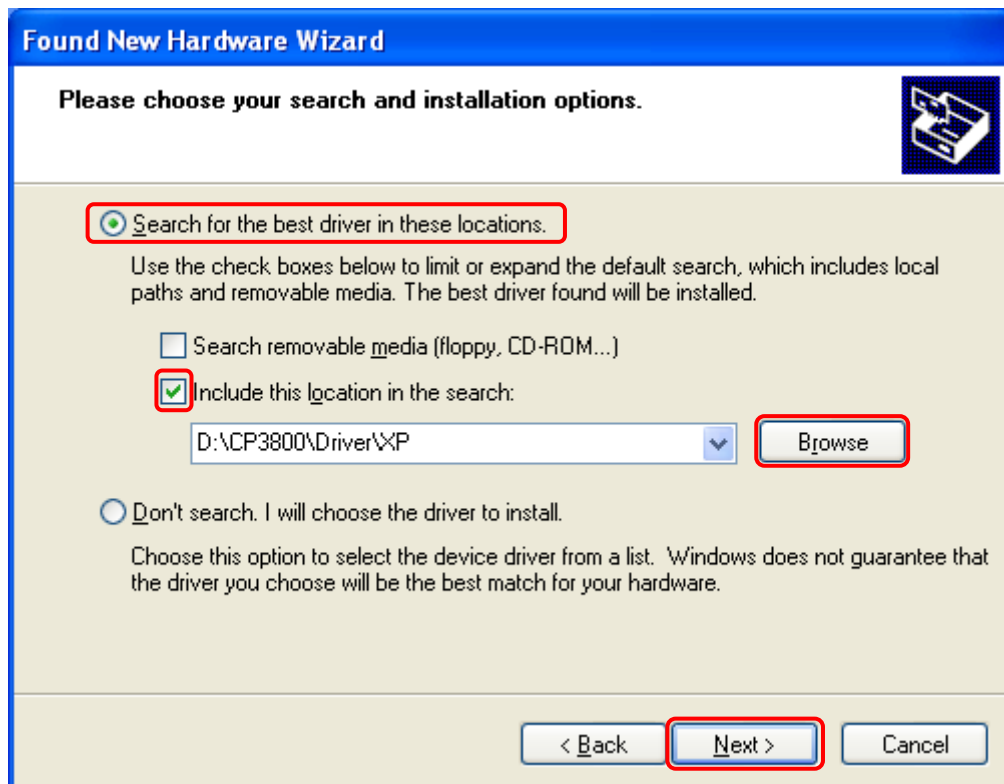


Fig 1.2 Search and Install Option

After searching the driver file, software installation is initiated. It takes some time for the software installation.



Fig 1.3 Software Installation

If the following window appears during upgrade installation, check the “Version” section, select the newest version, and click the “Next” button.

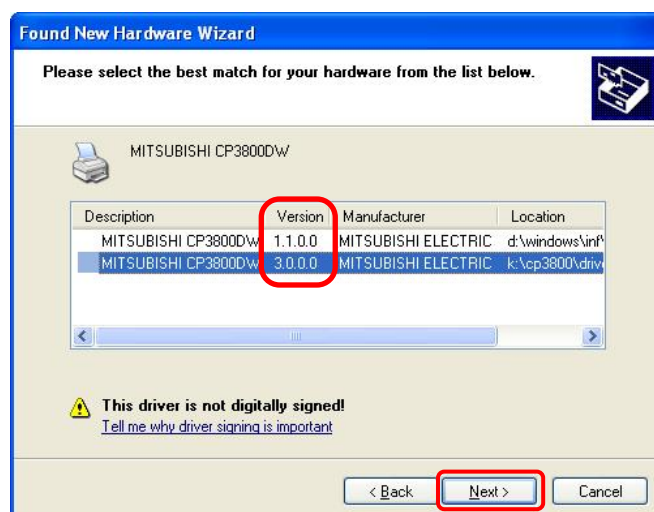


Fig 1.4 Select Software

During software installation, the following message will be displayed. Please click [Continue Anyway] to continue.



Fig 1.5 Software Installation

If [Search removable media (floppy, CD-ROM...)] has been selected in Figure 1.2, the following message will be displayed.

CD-ROM is inserted, and click [OK].



Fig 1.6 Insert Disk

If the following window appears when clicked [OK] in Figure 1.6.
Specify the location of the installation disk using the [Browse] button, and click [OK].

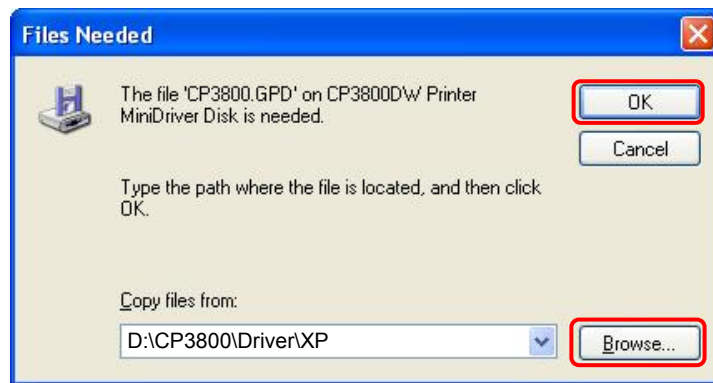


Fig 1.7 Files Needed

Click [Finish] to finish the wizard.



Fig 1.8 Quit from Found New Hardware Wizard

Click [start] – [Printer and Faxes] and confirm that [CP3800DW] is shown.

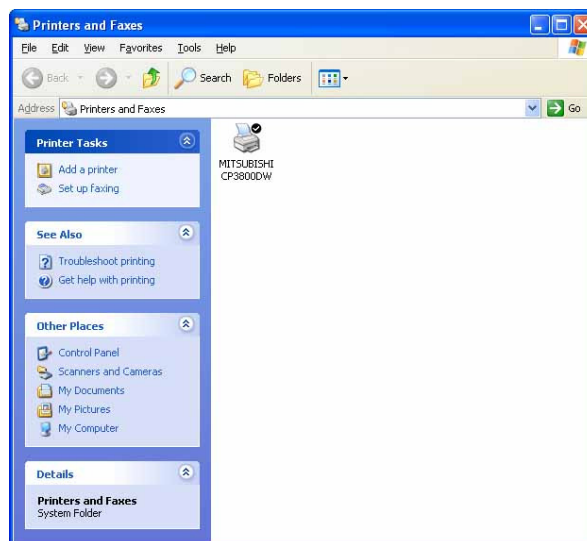


Fig 1.9 Printers and Faxes

After installation of the printer-driver is complete, be sure to reboot the computer.

1.3 Install from Add Printer Wizard

Click [start] – [Printers and Faxes].

(Depending on the host computer, [Printers and Faxes] may not be indicated. In that case, click [start] – [Control Panel] – [Printer and Other Hardware] – [Printers and Faxes])

Click [Add a printer].

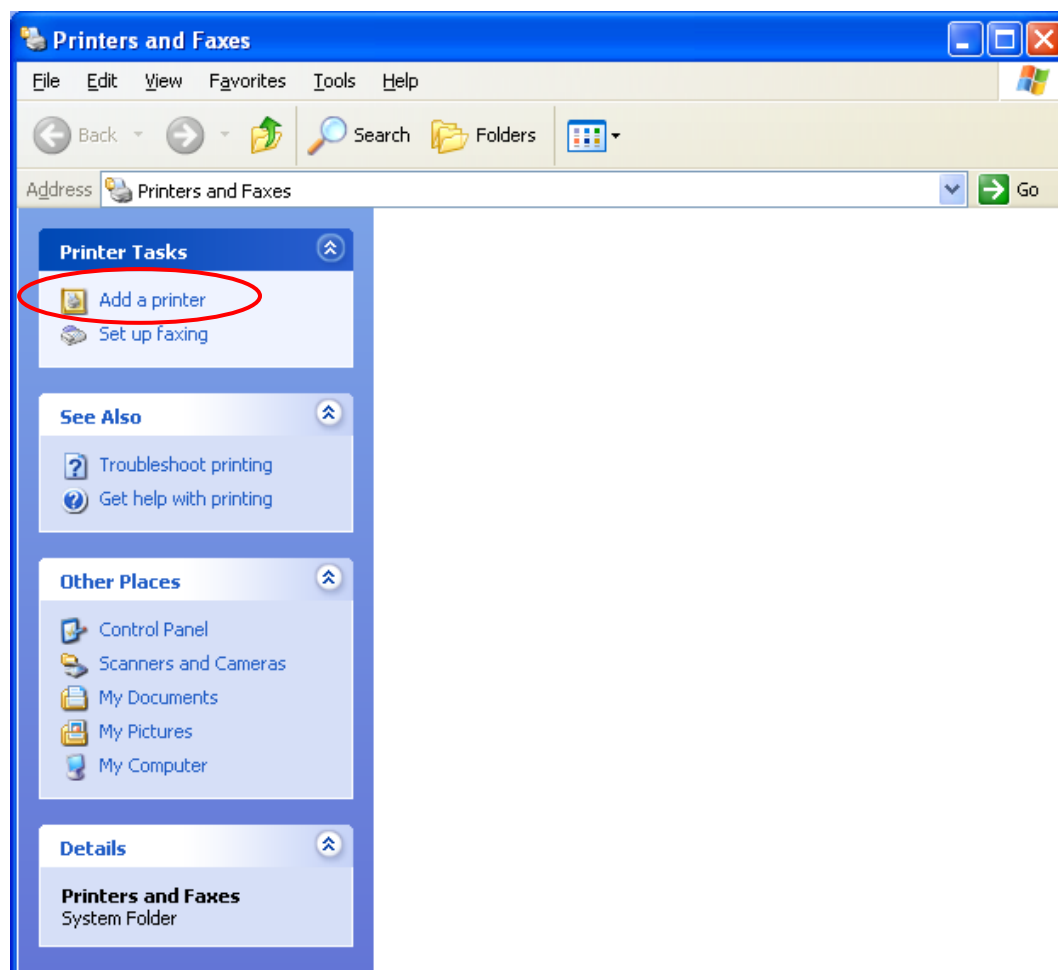


Fig 1.10 Printers and Faxes

After [Add Printer Wizard] window is shown, click [Next].

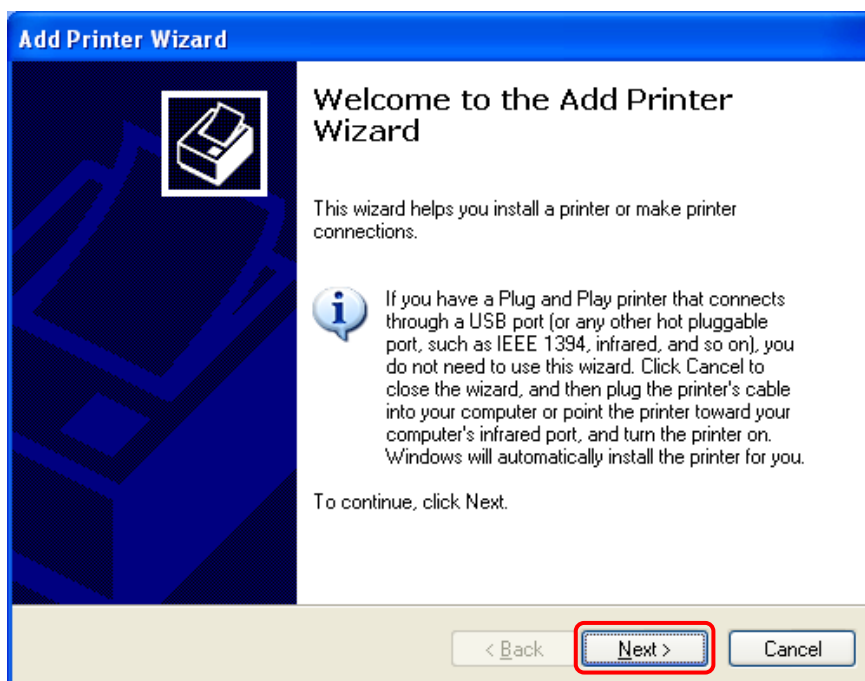


Fig 1.11 Start of Add Printer Wizard

In the [Local or Network Printer] window, select [Local printer attached to this computer], and deselect [Automatically detect and install my Plug and Play printer], then click [Next].

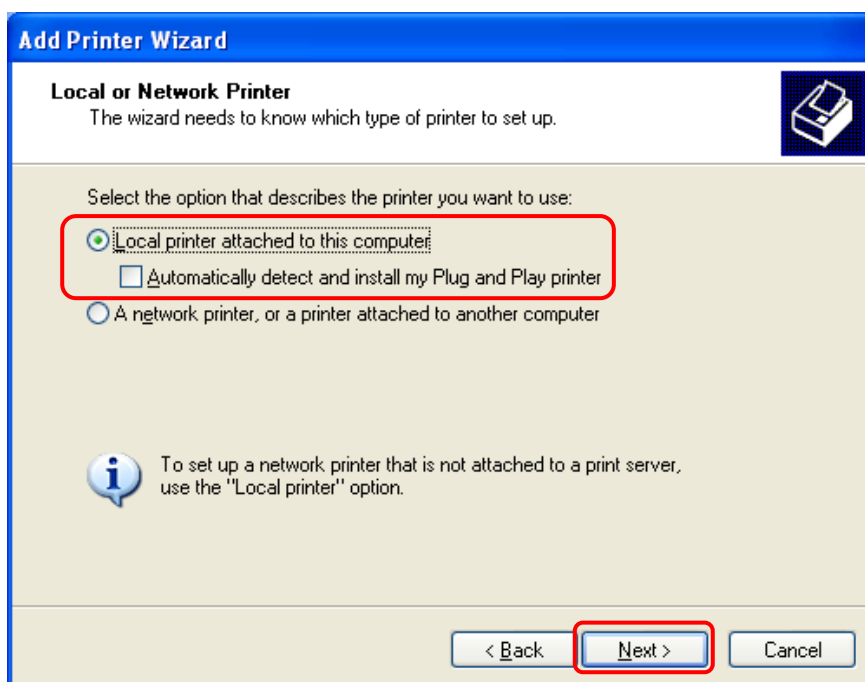


Fig 1.12 Local or Network Printer

In the [Select a Printer Port] window, select [Use the following port] and assign USB port ([USB001] so on) from the dropdown list, then click [Next].

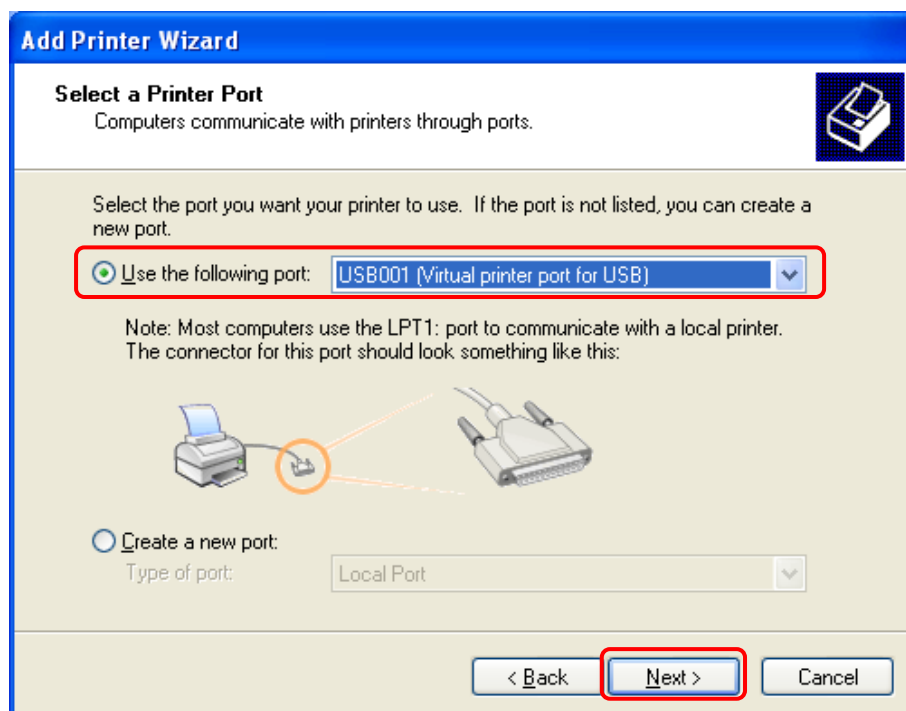


Fig 1.13 Printer port assign

After [Install Printer Software] is shown, click [Have Disk].

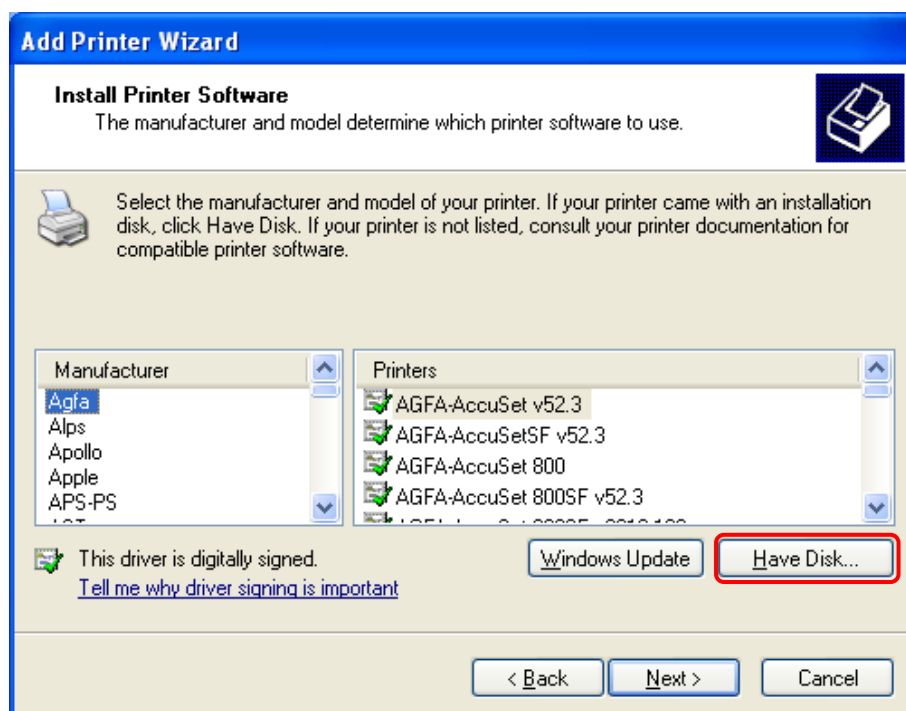


Fig 1.14 Printer software installation

In the [Install From Disk] window, select the location of the installation disk using [Browse].
 *The location is different by the OS. (XP or 2K)

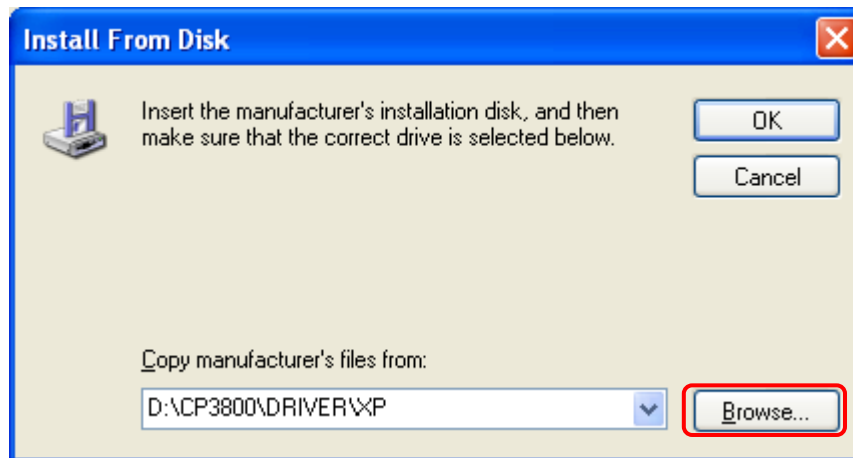


Fig 1.15 Install from disk

After confirming that [CP3800DW] is shown, click [Next].

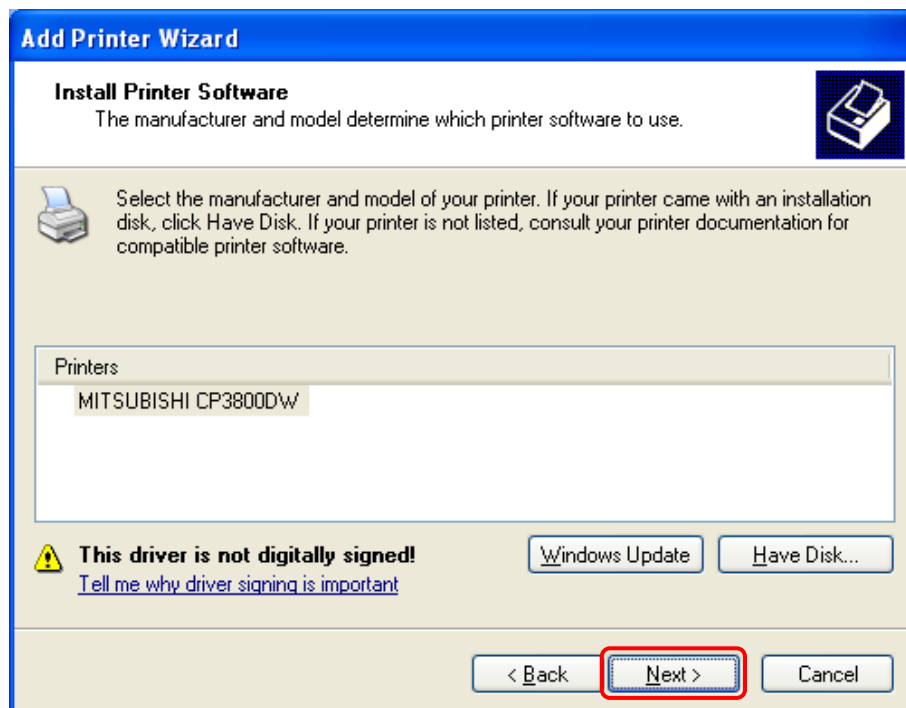


Fig 1.16 Printer software installation

In the [Name Your Printer] window, assign a name to the printer and click [Next].

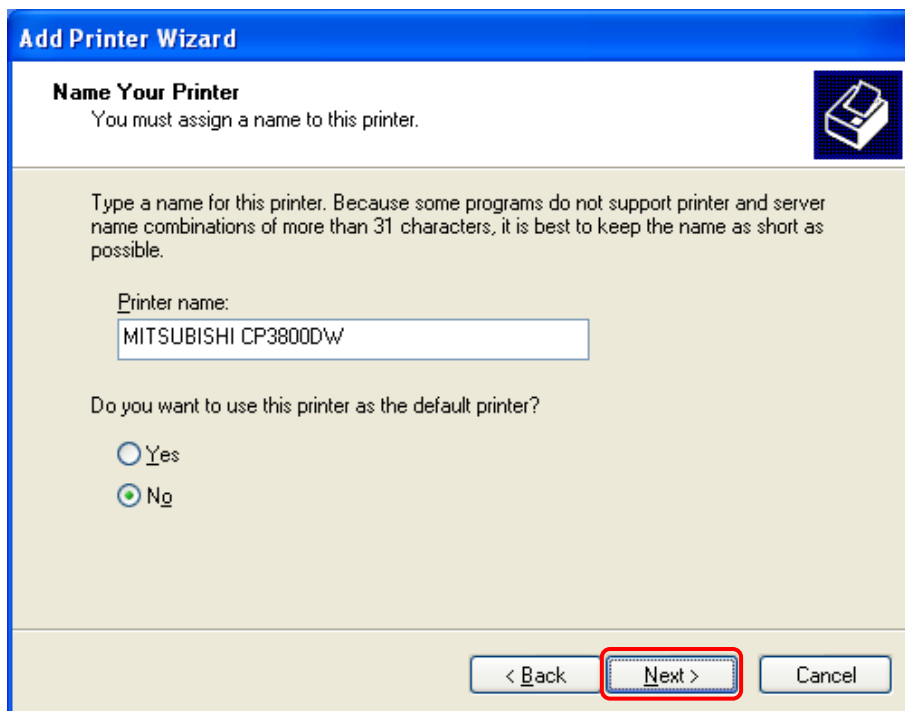


Fig 1.17 Assigning a name to the printer

In the [Print Test Page] window, select [No] and click [Next].

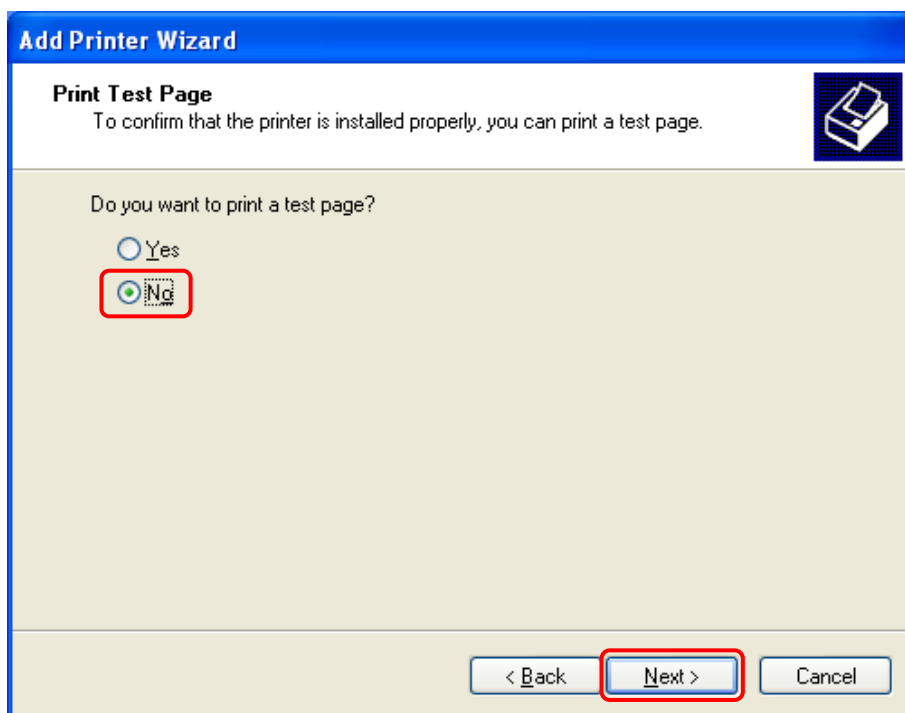


Fig 1.18 Print test page

In the [Completing the Add Printer Wizard] window, click [Finish].

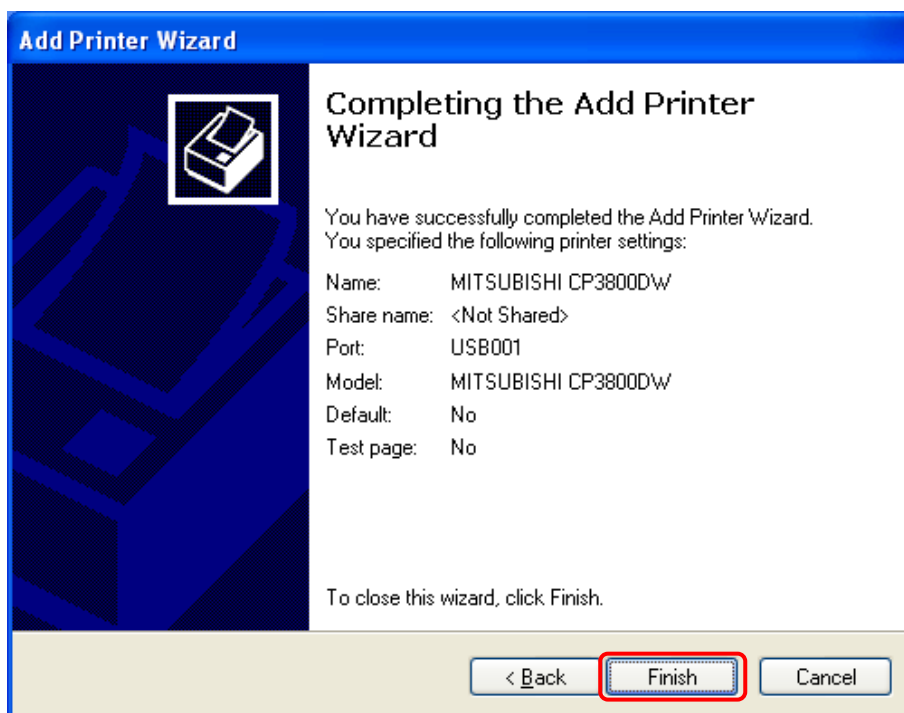


Fig 1.19 Completing the Add Printer Wizard

When installing the software, the following message may be displayed. Click [ContinueAnyway] to continue.



Fig 1.20 Hardware installation

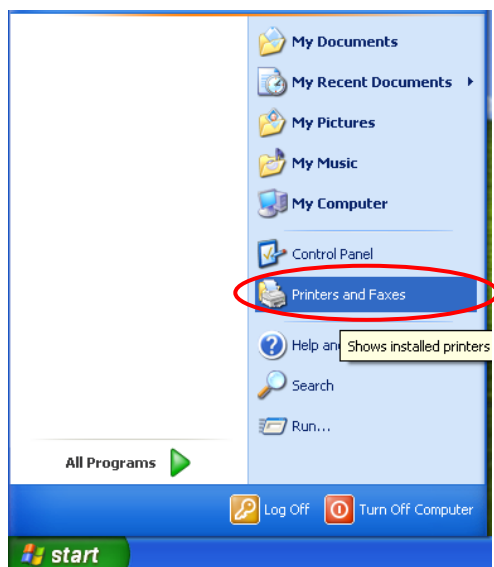
After installation of the printer-driver is complete, be sure to reboot the computer.

Chapter 2 Properties

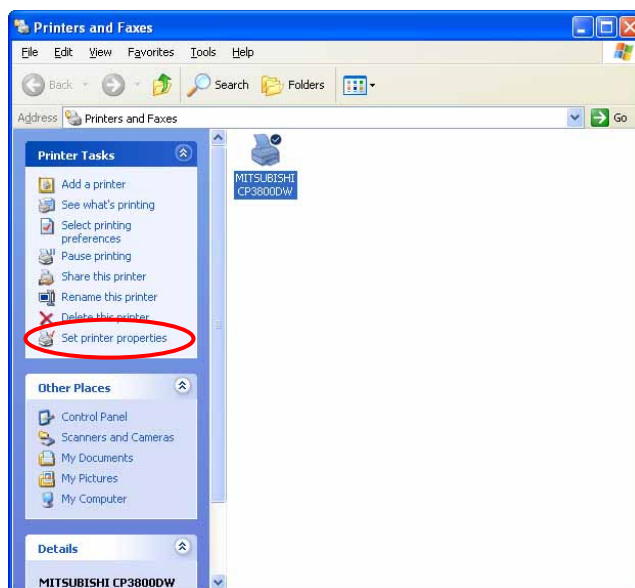
Various printer settings can be made using the CP3800DW Driver properties. As a rule, the printer settings should not be altered. Use the default settings present at installation. Alter paper-size settings at the Application side. Before operation, be sure to have a good understanding of the contents.

2.1 Opening Printer Properties

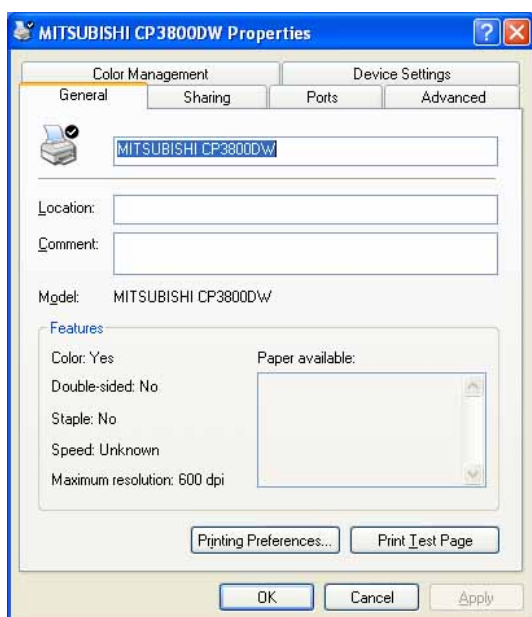
1. Start in order using START →
All Programs → Printers and Faxes



2. Select the CP3800DW printer →
Open Set printer properties



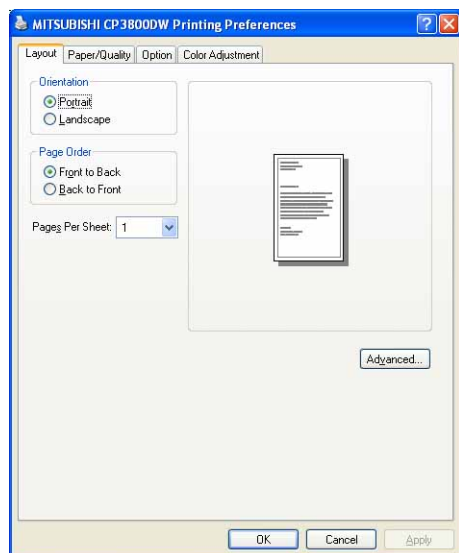
3. The CP3800DW Properties window will appear.



2.2 Explanation of Print Setting Functions

2.1 From the Properties window, by selecting Print Settings you can make various print settings.

2.2.1 Layout



2.2.1 Dia.) Layout tab

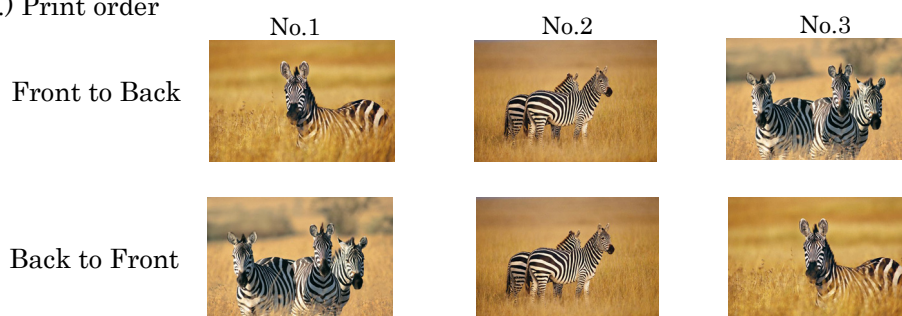
Orientation

Please set to Portrait.

Page Order

When printing multiple images in the application, you can set the order.

Ex.) Print order



Pages Per Sheet

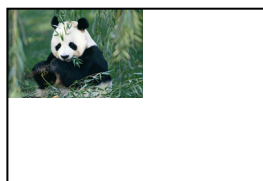
Prints the designated fractional size.

Ex.) Fractional size

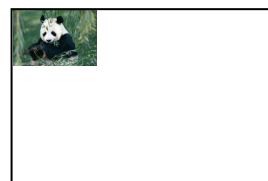
1(Whole)



4(Quarter-size)

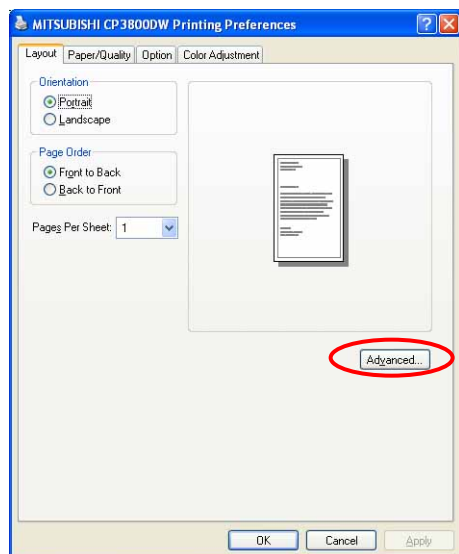


9(One-ninth size)

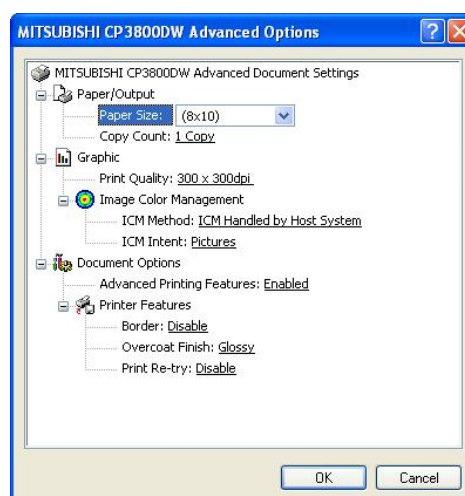


2.2.2 Advanced Options

By selecting [Advanced Settings] in the Layout window, various settings can be made using Advanced Options.



2.2.2 Dia.1) Advanced Settings



2.2.2 Dia. 2) Advanced Options tab

Paper Size

You can designate the paper size. Please match the paper size to the media size with which the printer is equipped.

Copy Count

You can designate the number of times an image will be printed.

Print Quality

You can designate the print quality.

Print Quality	Function
300 x 300dpi	Printing in the high-speed mode
300 x 600dpi	Printing in the high-quality mode * If the application can not set an asymmetric aspect resolution, please set the 600x600dpi
600 x 600dpi	Printing in the high-quality mode (Printer driver converts to 300x600dpi data, and sends it to the printer.)

ICM Method

ICM intent	Function
ICM Disabled	2.2.4 Synchronous with “Color Management: None” in paper option.
ICM Handled by Host System	2.2.4 Synchronous with “Color Management: ICM” in paper option. Performs color management with the driver.
ICM Handled by Printer	This is the same as setting “ICM Handled by Host System”.

ICM Intent

This designates the rendering method when using ICM. Always have the ICM for the CP3800DW set to “Picture”. Please do not use it at other settings.

Advanced Printing Features

Always have it set to “Enabled”. Please do not use it at other settings.

Pages per Sheet Layout

The layout direction of a picture is specified, when Pages per Sheet setting is multiple pages per sheet.

Border

Synchronous with the border option in the paper option.

Overcoat Finish (Depending on the version of the printer, “Glossy” may be the only option)

There are two types of overcoat finish:

Overcoat Finish	Function
Glossy	The printed images with a glossy surface.
Matte	The printed images with a matte (luster) surface.

* Re-boot computer is needed if the printer driver was updated. Otherwise this new driver function will not be available.

Print Re-try (Depending on the version of the printer, “Disable” may be the only option)

This sets up determines whether print data in the printer buffer is printed after error recovery.

Print Re-try	Function
Disable	Printing data in the printer buffer is cleared in case of a printer error. You may be required to re-send the image data to print. When using a program that has an error recovery function, select this option.
Enable	Image data in the printer buffer is held in the case of certain printer error. After the printer recover from the error, the print process resumes with the saved data. However, if the power is turned OFF, the data will not be saved. See chart below for errors which can resume printing.

* Re-boot computer is needed if the printer driver was updated. Otherwise this new driver function will not be available.

Printer errors recovery chart

Error recovery is based on Print Re-try setting. You may be required to reset the printer power.

Contents of an error	Print Re-try setup is “Disable”	Print Re-try setup is “Enable”
Paper End	After error recovery, resend last image data not printed.	Printing will resume after error recovery.
Ribbon End		In some cases where printer initialize is needed, printing will resume after initialization.
Door is Open		
Paper Jam (*1)		
Ribbon Error (*1)		
Paper Error		
No Scrap Box	Reset printer power to recover from this error. Then resend the last image data not printed.	Reset printer power to recover from this error. Data held in the printer buffer is cleared after power reset. Resend image data is required.
System Error		

*1: Please refer to the user’s manual to recover from these errors.

2.2.2-1 Multiple layout method 1

The CP3800DW is able to print 2 or 3 images multiple layouts.

With the printer driver paper setting, multi-image layout is made possible, and the image sizes are as follows.

Refer to “2.2.2-2 Multiple layout method 2” for multi-cut paper settings with the “M_” prefix.

Layout designation

Model	Driver paper setting (layout)	Image size(mm)	Using Media
CP3800DW	(8x4) x 2	(207.3x104.6) x 2	8x12, 8x10
	(8x5) x 2	(207.3x130.0) x 2	8x12, 8x10
	(8x6) x 2	(207.3x155.4) x 2	8x12
	(8x5) _ (8x4)	(207.3x130.0) + (207.3x104.6)	8x12, 8x10
	(8x6) _ (8x4)	(207.3x155.4) + (207.3x104.6)	8x12, 8x10
	(8x6) _ (8x5)	(207.3x155.4) + (207.3x130.0)	8x12
	(8x8) _ (8x4)	(207.3x206.2) + (207.3x104.6)	8x12
	(8x4) x 3	(207.3x104.6) x 3	8x12
Image layout median size		2.54	

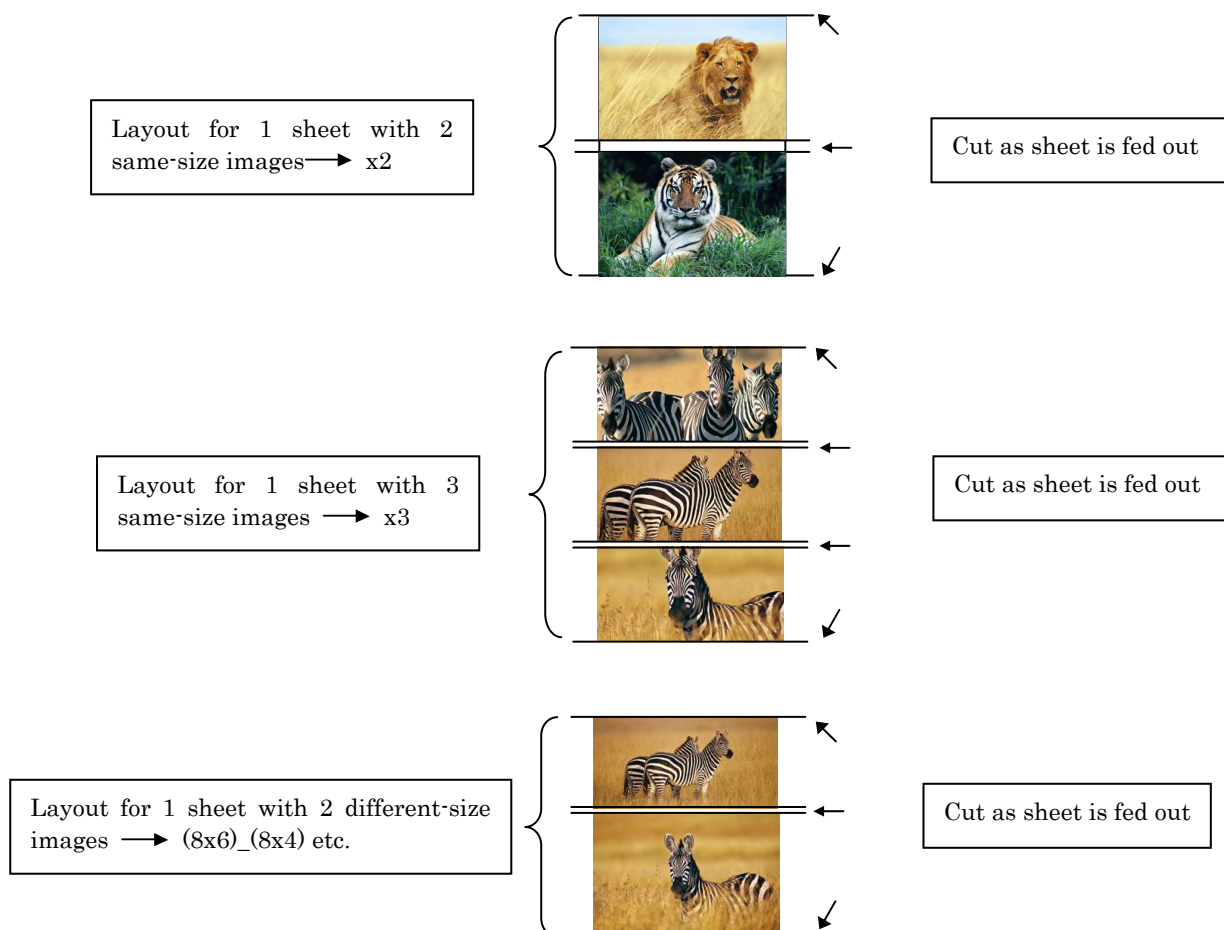
Multiple layout is possible under the following conditions.

1. The printer driver paper size is set to one of the above sizes.
2. Multiple images are sent from the application.

Note) Because the multi-image layout occurs on a per job basis, this works when there are multiple images for 1 job. If you want to print the same image, be sure to send the image data for each copy to be printed. The printer prints 2 or 3 images in one operation, and the paper is cut as it is fed out.

<Multi-image layout patterns>

The following combinations are possible for the multi-image layout patterns.



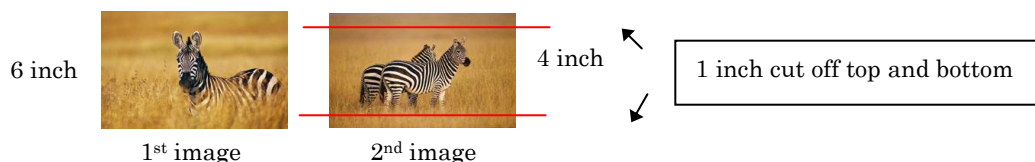
Cautions for printing 2 different-size images on one sheet

When printing 2 different-size images on 1 sheet, 1 inch will be cut off the top and bottom of the 2nd image when the image is being generated. When creating the original image, be aware of the following points.

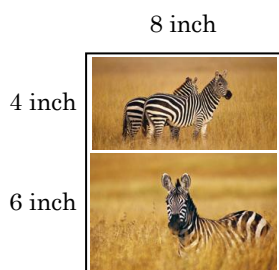
Ex.) When the layout is set for (8x6)_(8x4)

The driver creates the layout image in the order of (1),(2).

- (1) It creates two 8x6inch images
8 inch 8 inch

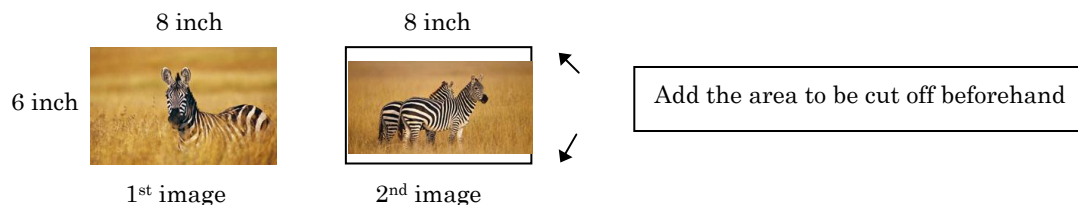


- (2) The driver then lays out the 2 different-size images from (1) as one (8x10) image and outputs it to the printer.



Ex.) Example of creating the original image.

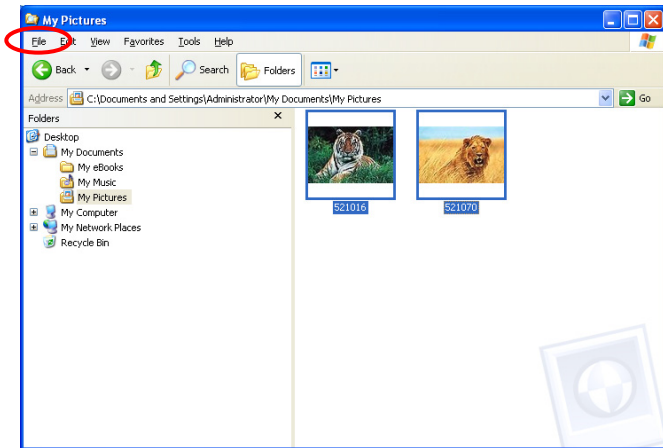
When outputting the original image to the driver, the 1st and 2nd images are created as the same size, so factor in the space that will be cut off from the 2nd image.



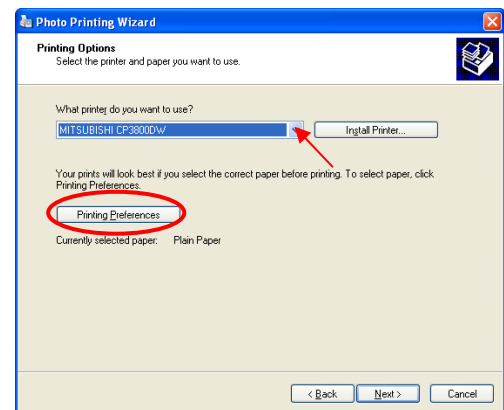
<Example of Application Use>

This is an example using Windows Explorer.

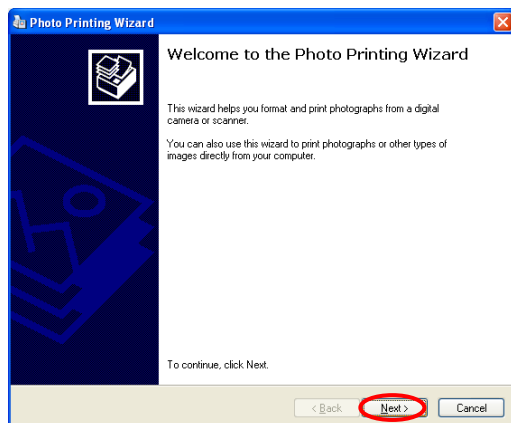
Step 1. Using File → Get Photo, select 2 or more images, and go to File → Print.



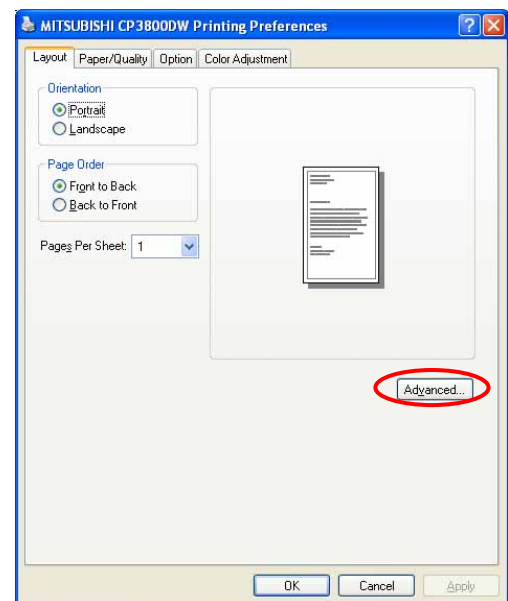
Step 4. After selecting the printer, open "Printing Preferences".



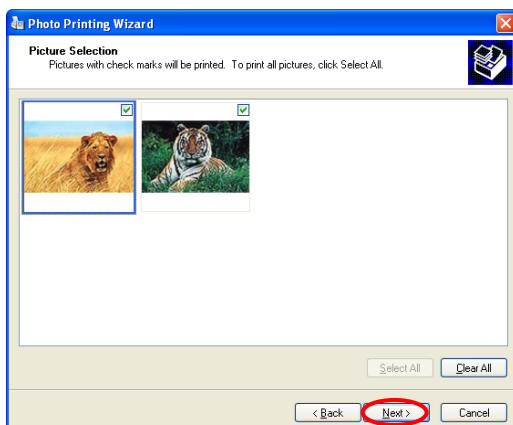
Step 2. Click on "Next".



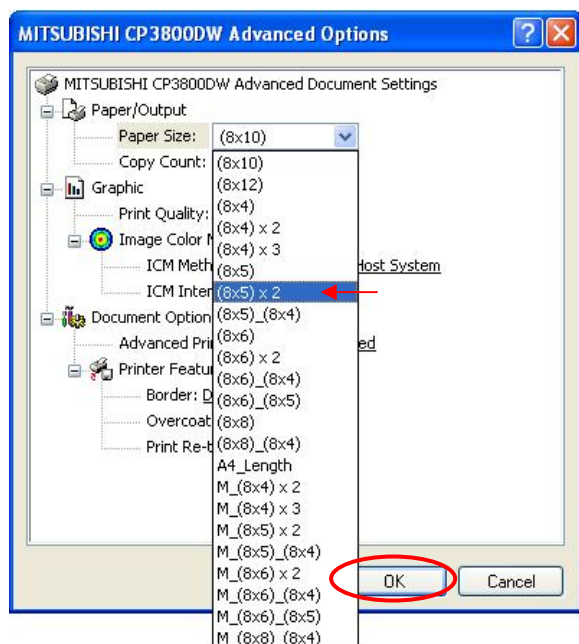
Step 5. Click on "Advanced".



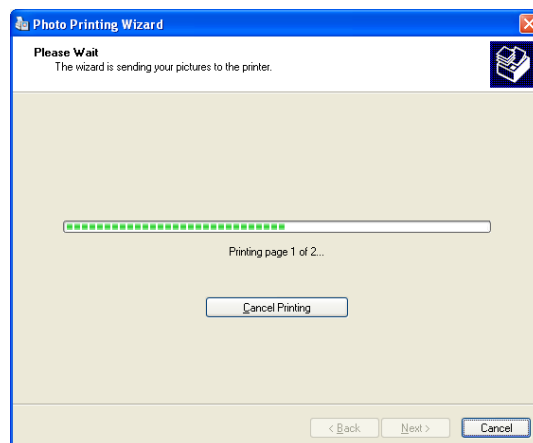
Step 3. Click on "Next".



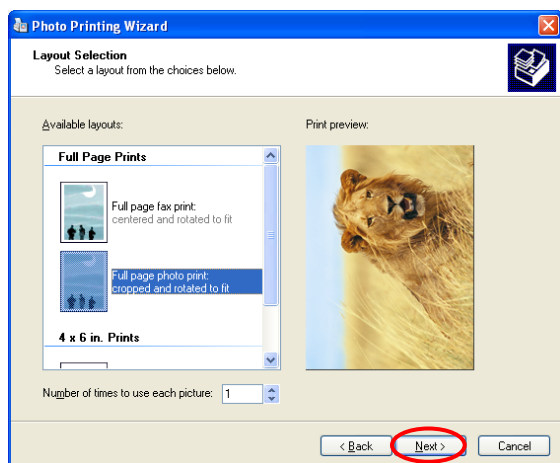
Step 6. Set the Paper Size to “(8x5)x2”. Then click “OK” on the windows from steps 6 → 5 → 4 → 3, returning to the window displayed in Step 2.



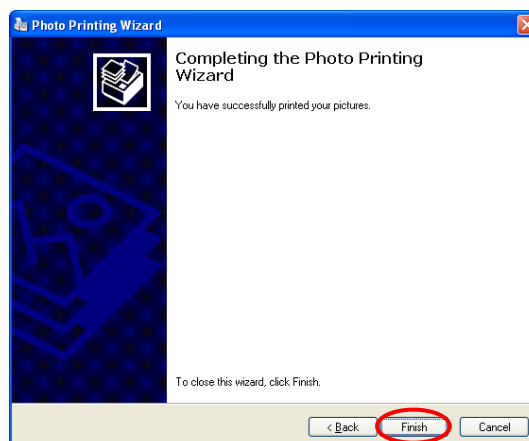
Step 7-2.



Step 7-1. Click on “Next”.



Step 8. Click on “Finish”.



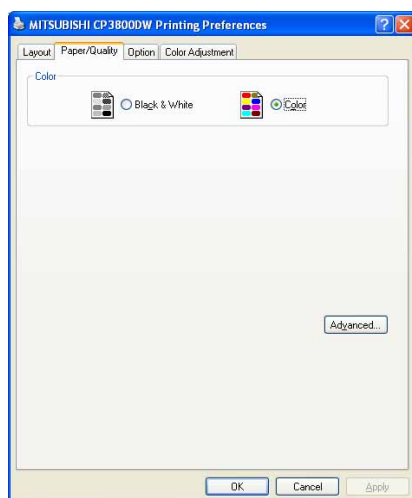
2.2.2-2 Multiple layout method 2

When running a multi-cut print of an image that has been prepared as a multi-image layout, select the multi-cut paper size with the “M_” prefix from the table below.

When these paper sizes are selected, the border option (paper option tab “Border”, or advanced option “Border”) is automatically set to disable, and cannot be changed. Because the driver processes it as no border, if a border is required, it should be added during image layout.

Model	Driver paper setting (layout)	Image size	Using Media
CP3800DW	M_(8x4) x 2	Refer to “2.5 Print Area” in “Print area of the multiple layout method 2”.	8x12, 8x10
	M_(8x5) x 2		8x12, 8x10
	M_(8x6) x 2		8x12
	M_(8x5) _ (8x4)		8x12, 8x10
	M_(8x6) _ (8x4)		8x12, 8x10
	M_(8x6) _ (8x5)		8x12
	M_(8x8) _ (8x4)		8x12
	M_(8x4) x 3		8x12

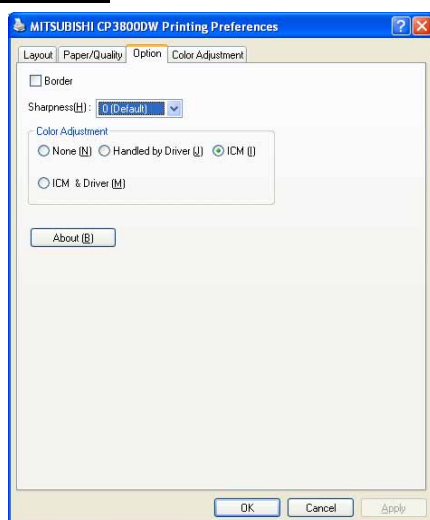
2.2.3 Paper/Quality



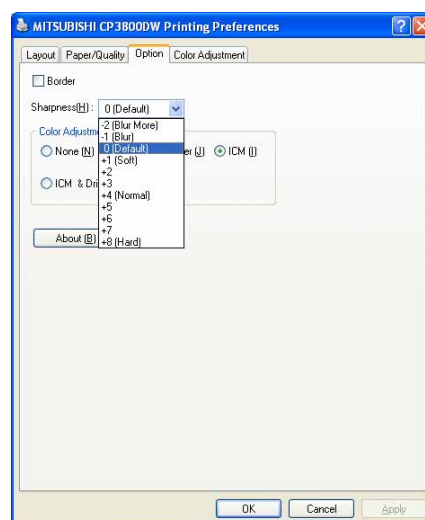
2.2.3 Dia.) Paper/Quality tab

Color Please set to color print. Do not use for black and white printing.

2.2.4 Option



2.2.4 Dia.1) Paper option tab



2.2.4 Dia.2) Sharpness setting

Border

Designates yes or no for border (check means with border). Synchronous with Border in the Advanced Settings.

Sharpness

Processes for 11 sharpness levels (Dia. 2). 0(Initial setting) means there is no sharpness processing. Minus(-) blurs the image, and plus(+) increases the sharpness.

Color Adjustment

None

Synchronous with the ICM Method in the Advanced Settings. Checking this item disables ICM and the Color Adjustment tab, and color management does not occur from the driver.

Handled by Driver

Checking this item disables ICM and [2.2.5 Color Adjustment](#) is enabled. The adjustment values for gamma, brightness, contrast, and chroma are shown.

ICM

Synchronous with the ICM Method in the Advanced Settings (ICM Handled by Host System). Checking this item enables color management from the driver.

ICM & Driver

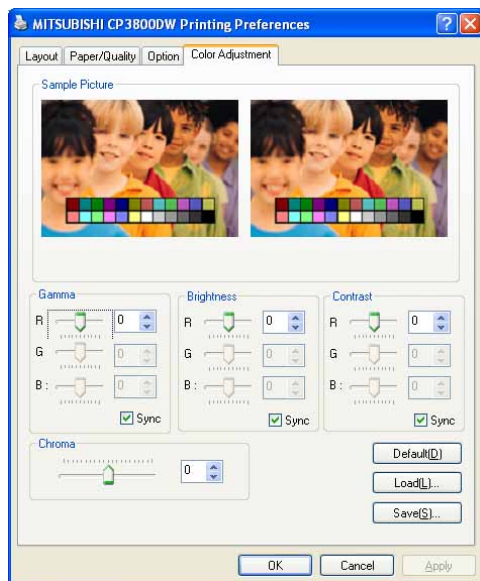
If you check this, ICM (color management) and color adjustment will be enabled.

About

Displays the driver version.

2.2.5 Color Adjustment

If you check Handled by Driver in [2.2.4 Option](#), the respective color adjustment values in the Color Adjustment tab are reflected in the image.



2.2.5 Dia.) Color Adjustment tab

Setting ranges in the Color Adjustment tab are as follows:

Adjustment Item	Adjustment Value
Gamma	-100(dark) ~ 100(light) (0 means no adjustment, Gamma 2.0 ~ 0.5) Adjusts the density of the highlights in the image. The greater the gamma value, the brighter the highlights. Synchronous check box ON : Sets RGB at the same value OFF:Sets RGB at a different value
Brightness	-100(dark) ~ 100(light) (0 means no adjustment) Adjusts the brightness of the image. The larger the value, the greater the overall brightness of the image. Synchronous check box ON :Sets RGB at the same value OFF:Sets RGB at a different value
Contrast	-100(weak) ~ 100(strong) (0 means no adjustment) Adjusts the contrast of the image. The larger the value, the greater the contrast. Synchronous check box ON : Sets RGB at the same value OFF: Sets RGB at a different value
Chroma	-100(weak) ~ 100(strong) (0 means no adjustment) Adjusts the color saturation of the image.

2.3 Default Values for Various Settings

Default values for each option (at the time of installation) are shown below. If the printer driver does not work correctly after changing the options, please return the options to the default settings.

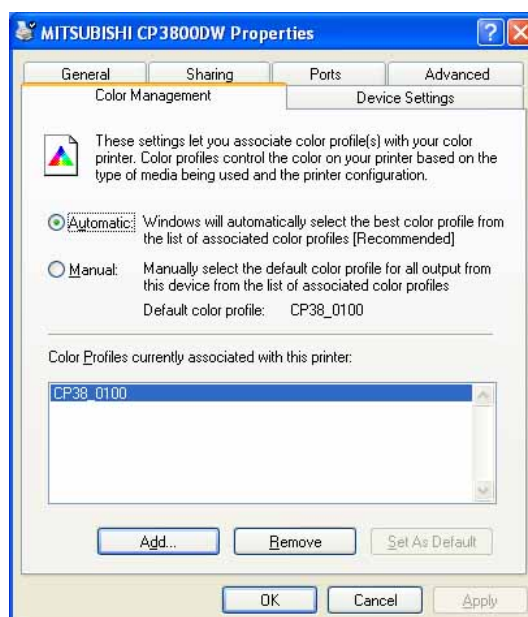
Note) According to the Service Pack and use environment of OS, the default value at the time of installation may differ from the following chart.

Tab	Options			Default	
Layout	Orientation			Portrait	
	Page Order			Front to Back	
	Pages Per Sheet			1	
Paper/Quality	Color			Color	
Option	Border			Disable	
	Sharpness			0 (Default)	
	Color Adjustment			ICM	
Color Adjustment	Gamma			0	
	Brightness			0	
	Contrast			0	
	Chroma			0	
Advanced (Click [Advanced] button of Layout tab)	Paper/Output	Paper Size		8x10	
		Copy Count		1	
	Graphic	Print Quality		300 x 300dpi	
		Image Color Management	ICM Method		ICM Handled by Host System
			ICM Intent		
			Document Option	Advanced Printing Features	
	Printer Features	Border		Disable	
		Overcoat Finish		Glossy	
		Print Re-try		Disable	

Chart 2.3 Print Setting Default Values

2.4 Color Management

In [Color Management], this designates the color profile. Default at installation associates [CP38_XXXX]. XXXX is a 4-digit number that refers to the version.



2.4 Dia.) Color Management

2.5 *Print Area*

Depending on the paper size designated at the driver, the image size and dot count will be as follows.

Model	Paper	Size (inch)	Print Area (mm)	300x300 DPI Dot amount	300x600 DPI Dot amount	600x600 DPI Dot amount *
CP3800DW	(8x4)	8" x 4"	207.3 x 104.6	2448 x 1236	2448 x 2472	4896 x 2472
	(8x5)	8" x 5"	207.3 x 130.0	2448 x 1536	2448 x 3072	4896 x 3072
	(8x6)	8" x 6"	207.3 x 155.4	2448 x 1836	2448 x 3672	4896 x 3672
	(8x8)	8" x 8"	207.3 x 206.0	2448 x 2436	2448 x 4872	4896 x 4872
	(8x10)	8" x 10"	207.3 x 257.0	2448 x 3036	2448 x 6072	4896 x 6072
	A4 Length	8" x 11.7"	207.3 x 297.0	2448 x 3544	2448 x 7088	4896 x 7088
	(8x12)	8" x 12"	207.3 x 307.8	2448 x 3636	2448 x 7272	4896 x 7272

<Print area of the multiple layout method 2>

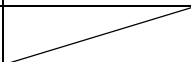
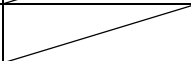
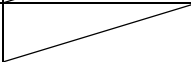
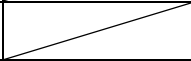
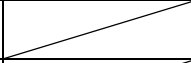
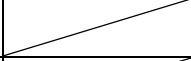
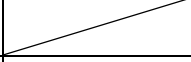
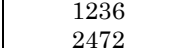
The size after multiple image layout.

Model	Paper setting	Print Area (mm)	300x300 DPI Dot amount	300x600 DPI Dot amount	600x600 DPI Dot amount *
CP3800DW	M_(8x4) x 2	207.3 x 211.8	2448 x 2502	2448 x 5004	4896 x 5004
	M_(8x5) x 2	207.3 x 262.6	2448 x 3102	2448 x 6204	4896 x 6204
	M_(8x6) x 2	207.3 x 313.4	2448 x 3702	2448 x 7404	4896 x 7404
	M_(8x5) _ (8x4)	207.3 x 237.2	2448 x 2802	2448 x 5604	4896 x 5604
	M_(8x6) _ (8x4)	207.3 x 262.6	2448 x 3102	2448 x 6204	4896 x 6204
	M_(8x6) _ (8x5)	207.3 x 288.0	2448 x 3402	2448 x 6804	4896 x 6804
	M_(8x8) _ (8x4)	207.3 x 313.4	2448 x 3702	2448 x 7404	4896 x 7404
	M_(8x4) x 3	207.3 x 319.0	2448 x 3768	2448 x 7536	4896 x 7536

*The horizontal line resolution of this printer is 300 DPI, so if 600x600 DPI is designated, the driver will reduce the image width from 4896 dots to 2448 dots and send this to the printer.

Multi-image layout position information (multi-cut paper sizes with the prefix "M_")

Refer to the layout diagram (Fig.2.5-1, Fig.2.5-2)

Paper setting	Width [pixel]	Image height [pixel]			M (Margin)
	X	Y1	Y2	Y3	
M_(8x4) x 2	2448	1236	1236		30
	4896	2472	2472		60
M_(8x5) x 2	2448	1536	1536		30
	4896	3072	3072		60
M_(8x6) x 2	2448	1836	1836		30
	4896	3672	3672		60
M_(8x5) _ (8x4)	2448	1536	1236		30
	4896	3072	2472		60
M_(8x6) _ (8x4)	2448	1836	1236		30
	4896	3672	2472		60
M_(8x6) _ (8x5)	2448	1836	1536		30
	4896	3672	3072		60
M_(8x8) _ (8x4)	2448	2436	1236		30
	4896	4872	2472		60
M_(8x4) x 3	2448	1236	1236		30
	4896	2472	2472		60

Upper value = 300DPI

Lower value = 600DPI

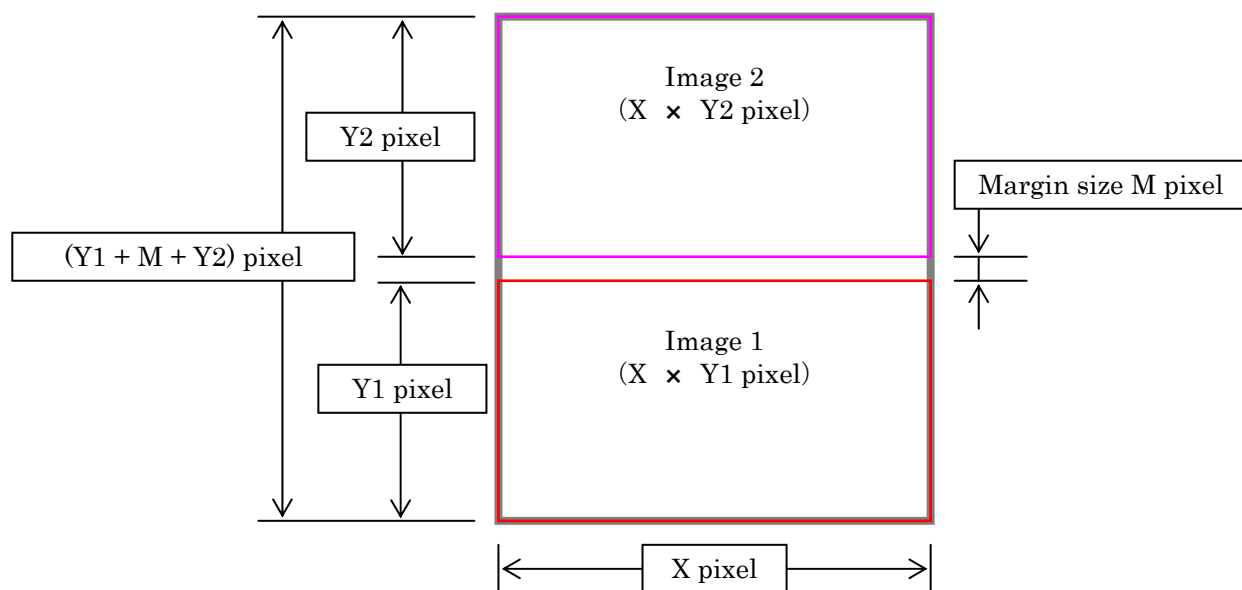


Fig.2.5-1 2-image layout

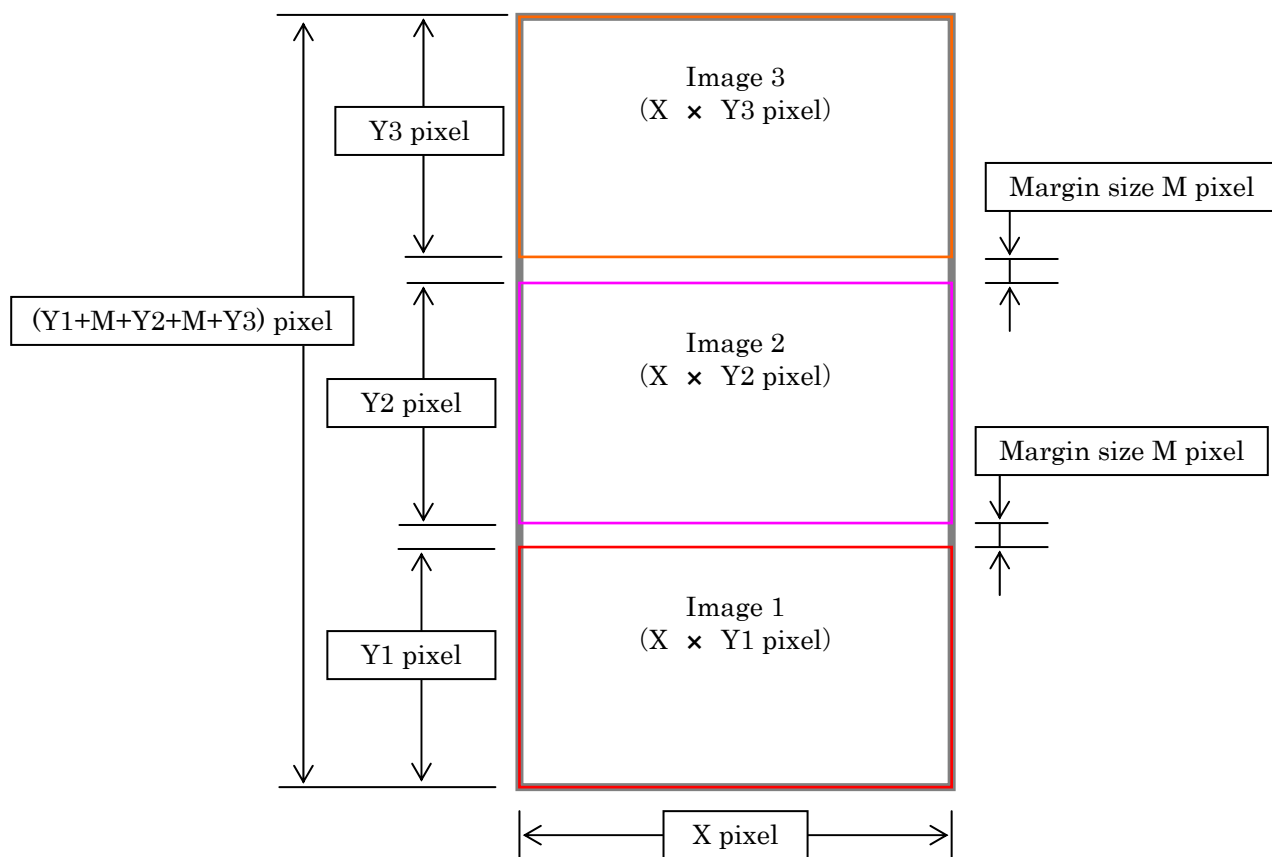


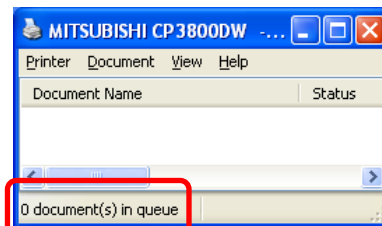
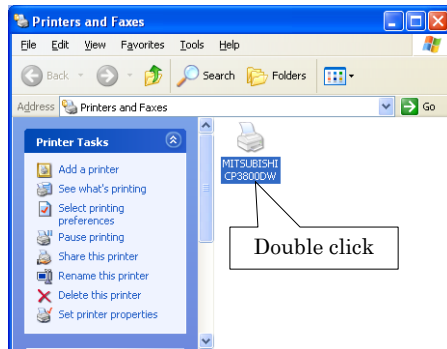
Fig.2.5-2 3-image layout

Chapter 3 Updating the Driver

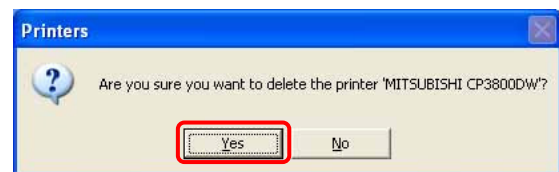
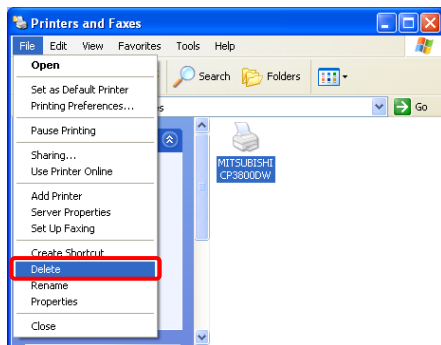
In order to update the printer-driver, follow the steps shown below.

1. Driver Removal

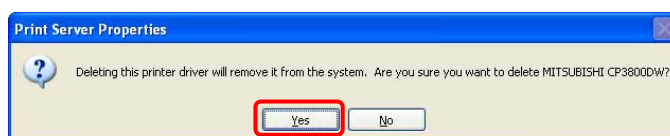
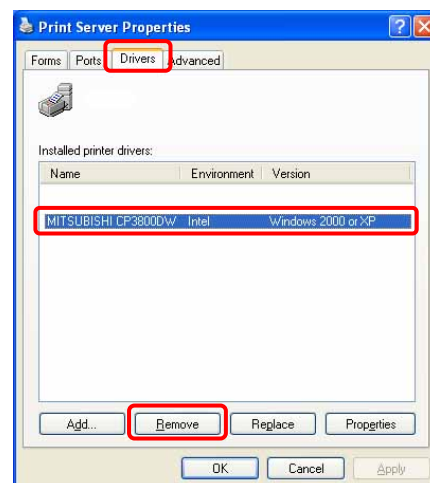
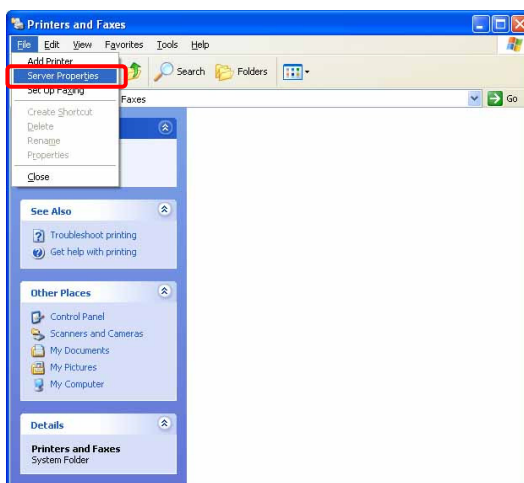
- (1) Before removing the printer-driver, shut down all other applications. Also, double click the icon for the printer to be removed, and make sure there are no documents in the queue before you begin removal of the driver.



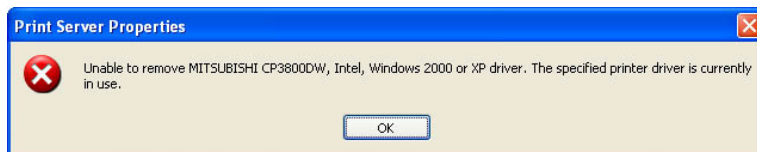
- (2) From the [Printers and Faxes] window, select the CP3800DW printer. Select [Delete this printer]. Are you sure you want to delete the printer "CP3800DW"? → select "Yes" to remove the printer.



- (3) After the CP3800DW printer has been removed, in the same way select File → Server Properties. The Print Server Properties dialog box should appear. Select the Drivers tab. After selecting driver "CP3800DW", click "Remove". The confirmation box will appear. By clicking "Yes", the driver will be removed.

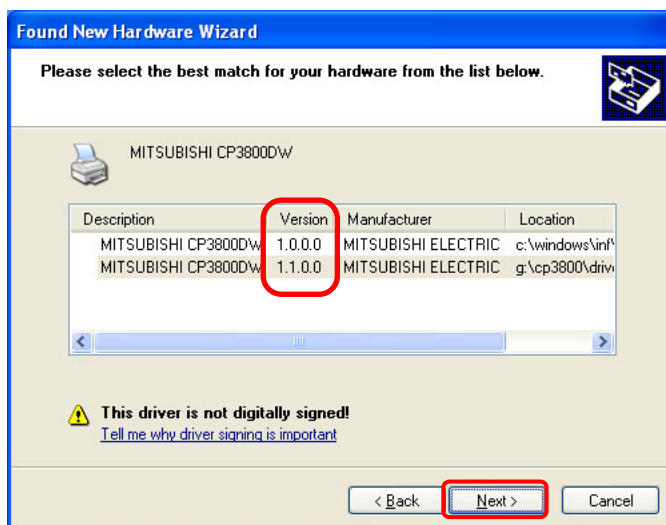


Note) Before removing the printer-driver, if the following error message appears, please reboot the computer. After the computer has been rebooted, repeat the steps to remove the printer-driver.



2. Installing the printer-driver upgrade

After removing the printer and printer-driver, install the new printer-driver. For installation steps, please refer to Chapter 1 "Install". If the following window appears during installation, check the "Version" section, select the newest version, and click the "Next" button.



3. Rebooting the computer

After installation of the printer-driver is complete, be sure to reboot the computer. (Do not print immediately after installation. First reboot the computer.)

Chapter 4 Driver Removal

For steps to remove the printer-driver, refer to Chapter3-1 “Driver Removal”