

## CP-W5000DW LUT Update Tool

### Legal Notices

- 1) By downloading this software utility tool, you agreed not to distribute the software or any of the file(s) contained within the software.
- 2) You may not use the software other than what is intended for, as described in this document.
- 3) You may not alter, reverse-engineer, decompile or reverse-assemble the software.
- 4) Performing any of the above actions will void and forfeit the product warranty of the printer.

### Requirement

Model: CP-W5000DW

System: PC with Windows 7/8/10 (32-bit/64-bit)

Cable: USB high speed type (USB 2.0 certified or later)

USB Port Driver: USB Printing Support

\*Microsoft Windows is registered trademarks or trademarks of Microsoft Corporation in the United States and/or other countries.

### Precautions

1. The printer must be functional and in 'READY' but 'IDLE' mode.
2. The software will not work if the printer is in a state of error.
3. Do not turn OFF the printer while the software is running.
4. Do not disconnect the USB cable while the software is running.
5. All LUTs downloaded by users via SDK will be replaced by this tool.

If #2, #3, or #4 occurs, printer data will be corrupted and may result to non-functional, non-operational printer.

Failure to follow above instructions during the update resulting in a non-operational printer will not covered under the warranty.

### Preparation

- Install print paper roll and ink ribbon in the printer.
- Make sure the printer is in READY mode and do not have any error (ALARM is off state).

LUT update will not function if the software detects an error with the printer.

If you have more than one printer, you can only update one printer at a time.

### Printer update procedure

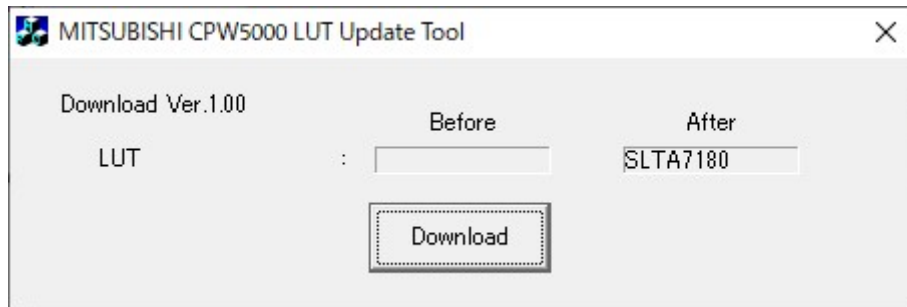
1. Power ON the printer.
2. Connect the printer to your PC using the USB cable.
3. Please double click the " DLCPW5000LUT\_Ver100.exe" file.

The tool will start and check the information of the connected printer.

4. After checking the printer connection and information, the dialog box as illustrated in Fig.1 will be displayed.

Click “Download” to initiate the LUT update.

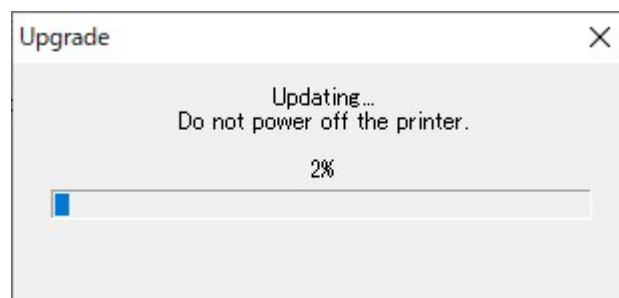
Do not disconnect or power off the printer during this update process.



<Fig.1>

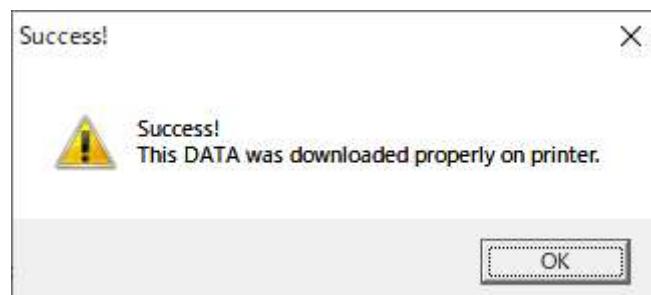
5. While updating, the dialog box below in Fig.2 will appear to show the progress status.

Do not disconnect or power off the printer during this process.



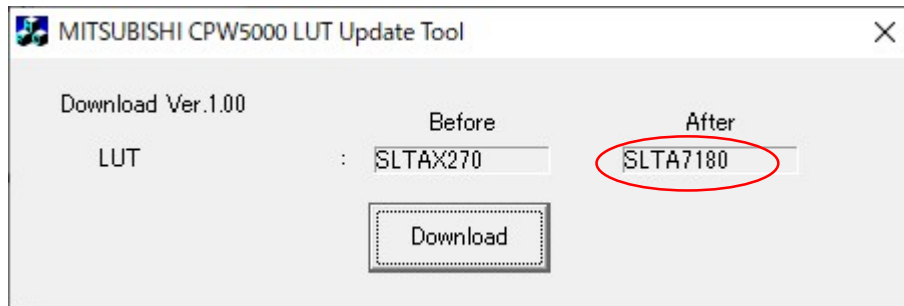
<Fig.2>

6. The LUT update is complete when the dialog box below in Fig 3 appears. Click “OK” to complete the update process.



<Fig.3>

7. The final confirmation dialog box (Fig.4) will be displayed with information about original and updated LUT. You will find the after version “SLTA7180” in this dialog box.



<Fig.4>

8. Close the update program by clicking the “X” mark (top right corner).

### Trouble-Shooting and Errors

-Case: Target printer is not connected

If the target printer is not connected, a dialog box (Fig. 5) will appear.

Check to make sure the printer is properly connected and restart from step 4 of the update procedure.

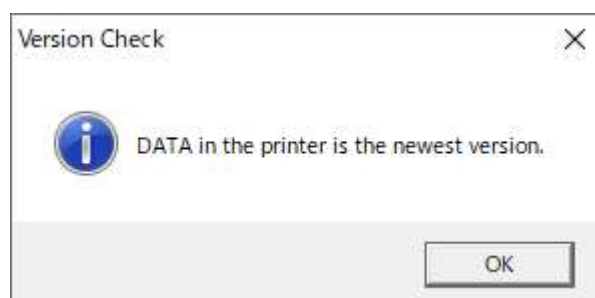


<Fig.5>

-Case: The latest LUT is in the printer

If the printer already has the latest LUT, the dialog box in Fig.6 will appear.

Simply press “OK” and wait for the progress bar dialog box to disappear. No further action required.

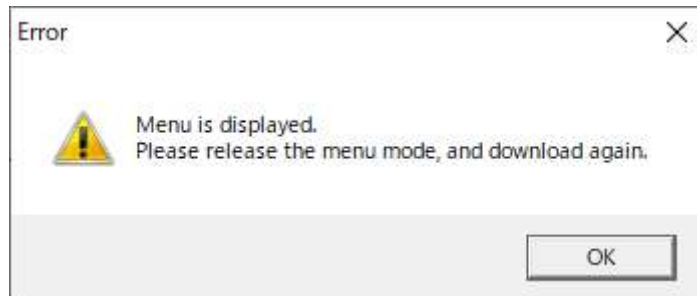


<Fig.6>

-Case: Printer is NOT in 'READY' but 'IDLE' mode.

If printer is NOT in 'READY' but 'IDLE' mode, the dialog in Fig.7 will appear.

Please follow instructions given in the dialog box and restart from step 4 of the update procedure.



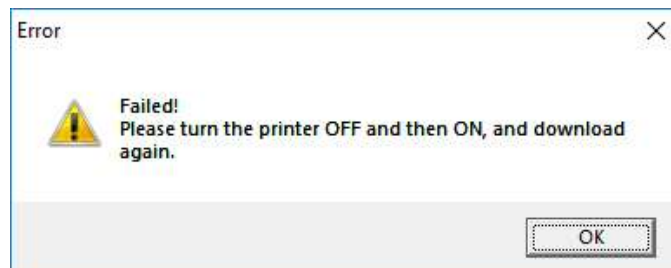
<Fig.7>

-Case: Failed to update or Update failure

If the update failed, the dialog in Fig.8 will appear.

Please follow instructions given in the dialog box and restart from step 4 of the update procedure.

If the update failed again, please contact to your local Mitsubishi Electric Technical Support.



<Fig.8>